

SECTION	COUNTY	TOTAL SHEETS	SHEET NO.
02-00034-00-BT	DUPAGE	108	24
STA.	TO STA.		
IDOT PROJECT NO. M-8003(216)			
SALT CREEK GREENWAY TRAIL			
CONTRACT NO. 83714			

PROP. CURVE OAK_CL-19
 PI STA = 24+286.458
 N = 40,924.556
 E = 8,782.686
 $\Delta = 2^\circ 16' 46''$ (LT)
 R = 300.000 m
 T = 5.968 m
 L = 11.935 m
 E = 0.059 m

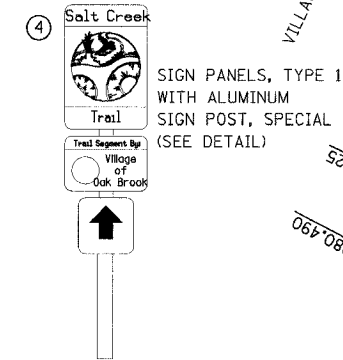
PROP. CURVE OAK_CL-20
 PI STA = 24+366.780
 N = 40,920.124
 E = 8,862.888
 $\Delta = 54^\circ 48' 24''$ (RT)
 R = 30.000 m
 T = 15.553 m
 L = 28.697 m
 E = 3.792 m

PROP. CURVE OAK_CL-25
 PI STA = 24+504.161
 N = 40,796.081
 E = 8,863.538
 $\Delta = 11^\circ 03' 46''$ (LT)
 R = 30.000 m
 T = 2.905 m
 L = 5.793 m
 E = 0.140 m

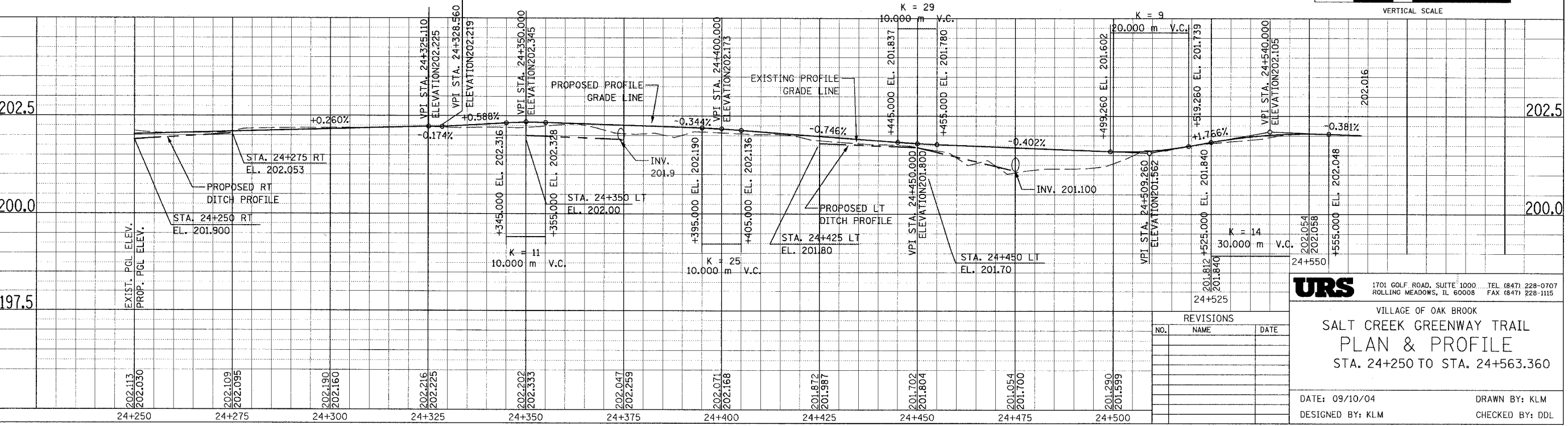
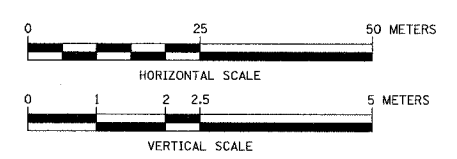
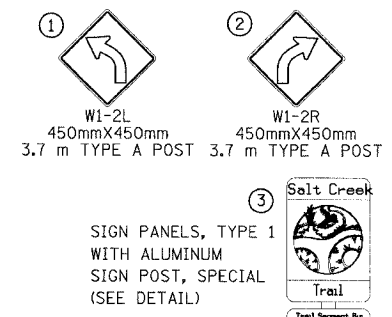
PROP. CURVE OAK_CL-26
 PI STA = 24+521.150
 N = 40,783.284
 E = 8,852.337
 $\Delta = 36^\circ 46' 27''$ (LT)
 R = 30.000 m
 T = 9.972 m
 L = 19.255 m
 E = 1.614 m

PROP. CURVE OAK_CL-27
 PI STA = 24+541.980
 N = 40,761.828
 E = 8,850.678
 $\Delta = 29^\circ 50' 13''$ (LT)
 R = 30.000 m
 T = 7.993 m
 L = 15.623 m
 E = 1.046 m

PROP. CURVE OAK_CL-28
 PI STA = 24+557.201
 N = 40,747.753
 E = 8,857.366
 $\Delta = 23^\circ 52' 35''$ (RT)
 R = 30.000 m
 T = 6.343 m
 L = 12.502 m
 E = 0.663 m



- H PRECAST REINFORCED CONCRETE FES, 300 mm
 STA. 24+475. 3.5 m RT
 INV. = 200.930
- I PRECAST REINFORCED CONCRETE FES, 300 mm
 STA. 24+475. 3.0 m LT
 INV. = 201.100
- J PRECAST REINFORCED CONCRETE FES, 300 mm
 STA. 24+373. 2.75 m LT
 INV. = 201.90
- K PRECAST REINFORCED CONCRETE FES, 300 mm
 STA. 24+373. 2.75 m LT
 INV. = 201.80



URS 1701 GOLF ROAD, SUITE 1000 TEL (847) 228-0707
 ROLLING MEADOWS, IL 60008 FAX (847) 228-1115

VILLAGE OF OAK BROOK
SALT CREEK GREENWAY TRAIL
PLAN & PROFILE
 STA. 24+250 TO STA. 24+563.360

REVISIONS		
NO.	NAME	DATE

DATE: 09/10/04 DRAWN BY: KLM
 DESIGNED BY: KLM CHECKED BY: DDL

FOR LEGEND SEE SHEET NO. 21