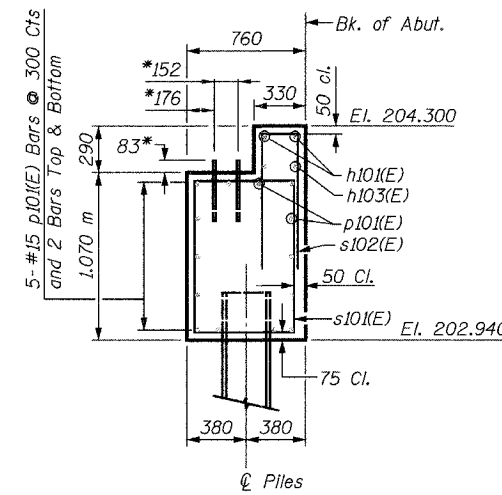
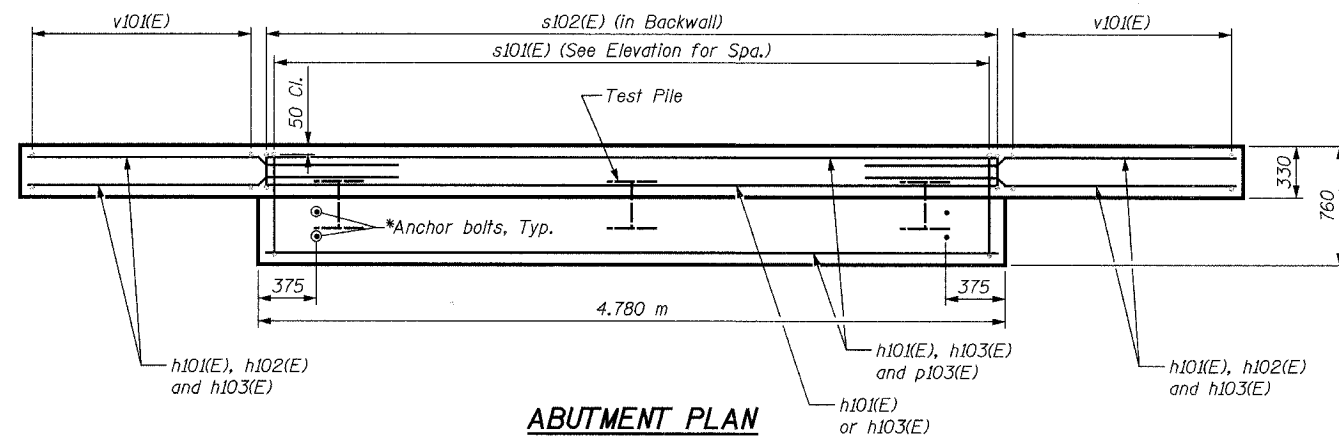


**ABUTMENT ELEVATION**

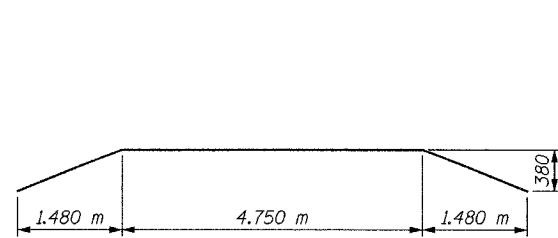


**SECTION A-A**

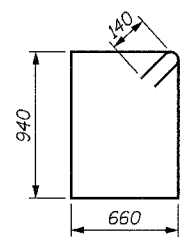
\* Anchor bolt size and locations shall be checked against the bridge fabricator's requirements prior to setting them.



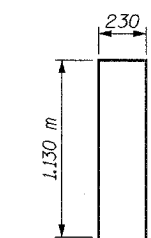
**ABUTMENT PLAN**



**BAR h101(E)**



**BAR s101(E)**



**BAR s102(E)**

**PILE DATA:**

Type: HP310x79  
Capacity: Driven to Refusal  
Est. Length: 10 m  
No. Required: 2 + 1 Test Pile

(Test pile shall be a permanent pile driven at the South Abutment)

**BILL OF MATERIAL**

Bar	No.	Size	Length	Shape
h101(E)	2	#15	7.81 m	
h102(E)	20	#15	2.42 m	
h103(E)	2	#15	6.35 m	
p101(E)	14	#15	4.68 m	
s101(E)	16	#15	3.48 m	
s102(E)	16	#15	2.49 m	
v101(E)	12	#15	2.14 m	
Concrete Structures		Cu. M	5.5	
Reinforcement Bars, Epoxy Coated		kg	420	
Furnishing Steel Piles HP310x79		Meter	20	
Driving Steel Piles		Meter	20	
Test Pile Steel HP310x79		Each	1	
Metal Shoes		Each	2	
Structure Excavation		Cu. M	13	

**LEGEND**

E.F. = Each Face

**MIN. BAR LAP**

#15 = 890

**NOTES:**

Space reinforcement in cap to miss anchor bolts.

All edges shall have standard 20 mm chamfers except as noted.

For Anchor Bolt Details, see Sheet S32.

There shall be no splicing of longitudinal bars. Bars shall be ordered full length.

Bars designated (E) shall be epoxy coated.

SHEET S5 of S33

REVISIONS		NAME	DATE	1701 GOLF ROAD, SUITE 1000 ROLLING MEADOWS, IL 60008 TEL (847) 228-1070 FAX (847) 228-1115
NAME	DATE			
				VILLAGE OF OAKBROOK SALT CREEK GREENWAY TRAIL PEDESTRIAN BRIDGE, STA. 18+151.5 SOUTH ABUTMENT DETAILS
				DATE: 06/30/05 DESIGNED BY: MDS DRAWN BY: MDS CHECKED BY: GAT