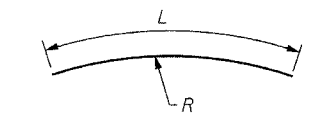


**ELEVATION - WALL "C"**  
(Sta. 23+365 to Sta. 23+379)

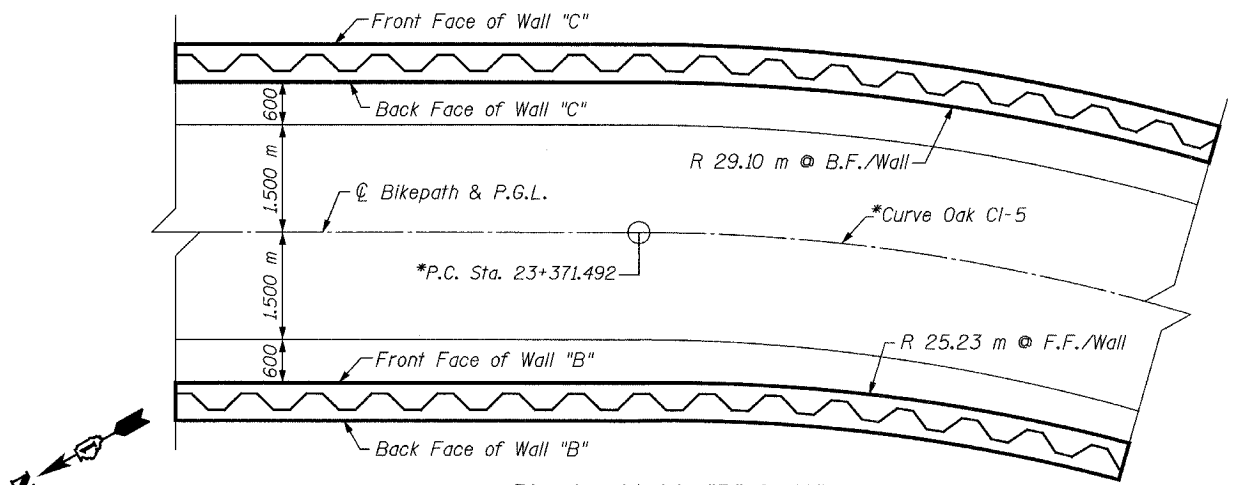
Bar	R	L
h606(E)	29.56 m	8.02 m
h607(E)	25.15 m	7.00 m



**BAR h606(E) & h607(E)**

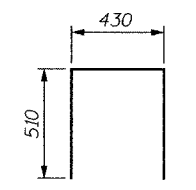
**BILL OF MATERIAL**

Bar	No.	Size	Length	Shape
h605(E)	17	#15	6.88 m	—
h606(E)	9	#15	8.02 m	—
h607(E)	8	#15	7.00 m	—
u60(E)	98	#15	1.45 m	⊏
v60(E)	51	#15	1.46 m	—
v602(E)	47	#15	1.17 m	—
Concrete Structures		Cu. M	20.7	
Reinforcement Bars, Epoxy Coated		kg	1070	
Structure Excavation		Cu. M	26	
Permanent Steel Sheet Piling		Sq. M	91	
Pipe Handrail		Meter	15	

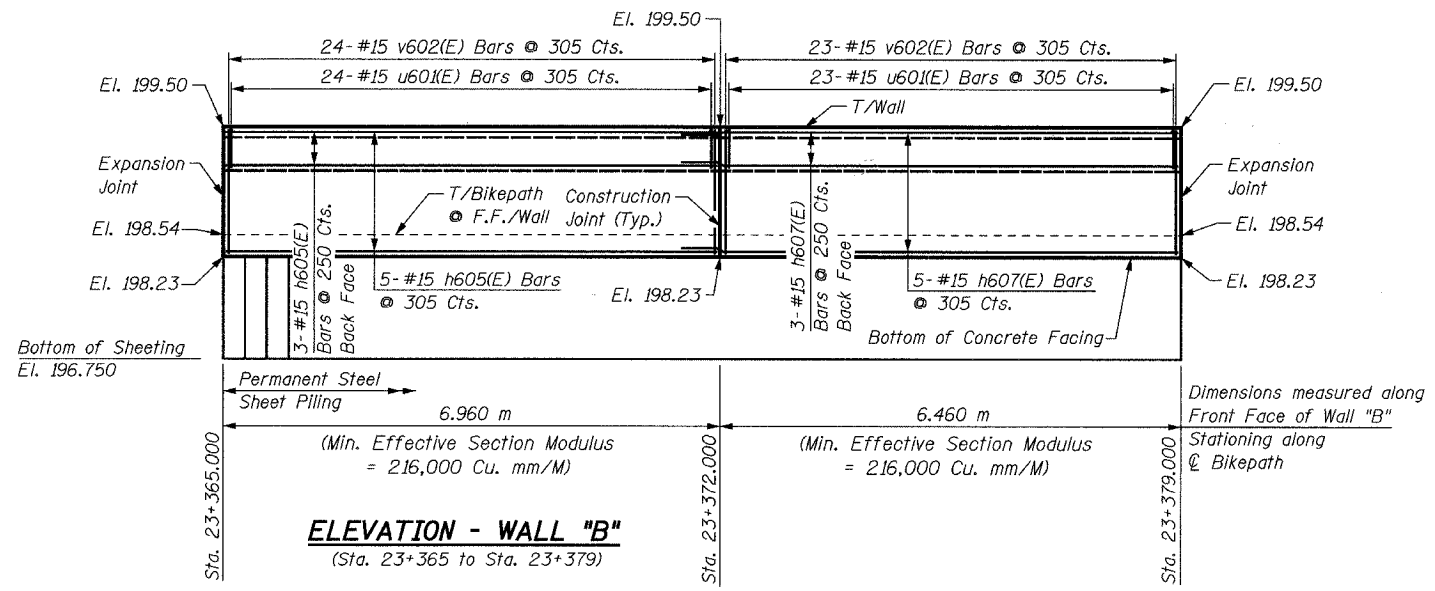


**PLAN - WALL "B" & "C"**  
(Sta. 23+365 to Sta. 23+379)  
(Reinforcement Omitted for Clarity)

**\*NOTE:**  
For horizontal curve and alignment information, see Plan & Profile drawings.



**BAR u60(E)**



**ELEVATION - WALL "B"**  
(Sta. 23+365 to Sta. 23+379)

**NOTES:**  
See Sheet S21 for Notes.

SHEET S23 of S33

REVISIONS		NAME	DATE
NO.	DESCRIPTION		

**URS**  
1701 GOLF ROAD, SUITE 1000  
ROLLING MEADOWS, IL 60008

VILLAGE OF OAKBROOK  
**SALT CREEK GREENWAY TRAIL**  
RET. WALL STA. 23+365 TO 23+379  
**PLAN & ELEVATION**

TEL (847) 228-0707  
FAX (847) 228-1115

DATE: 06/30/05  
DESIGNED BY: MDS

DRAWN BY: MDS  
CHECKED BY: GAT