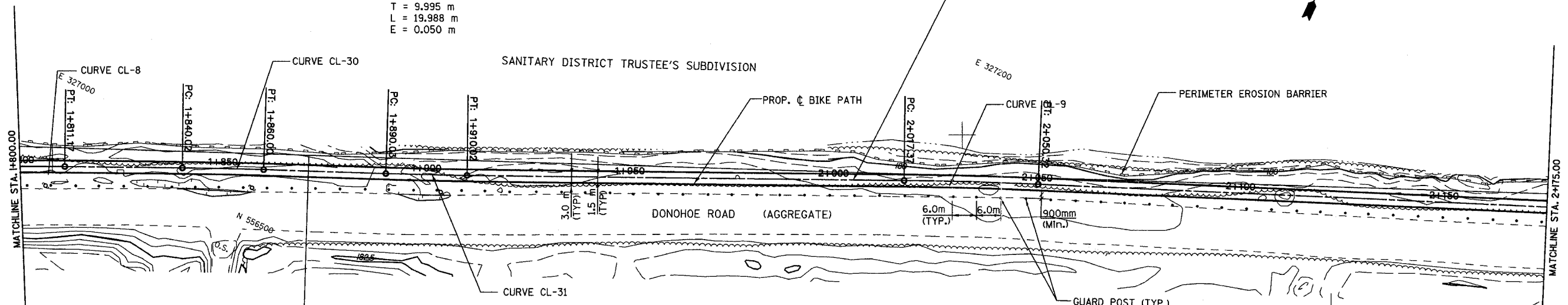


SECTION	COUNTY	TOTAL SHEETS	SHEET NO.
94-F3000-05-BT	COOK	102	16
STA. TO STA.		IDOT PROJECT NO. TE-D001(610)	
CENTENNIAL TRAIL		CONTRACT NO. 83859	

PROP. CURVE CL-31
 PI STA = 1+900.02
 N = 556535.2918
 E = 327084.9539
 $\Delta = 1^\circ 08' 43''$ (LT)
 R = 1000.000 m
 T = 9.995 m
 L = 19.988 m
 E = 0.050 m

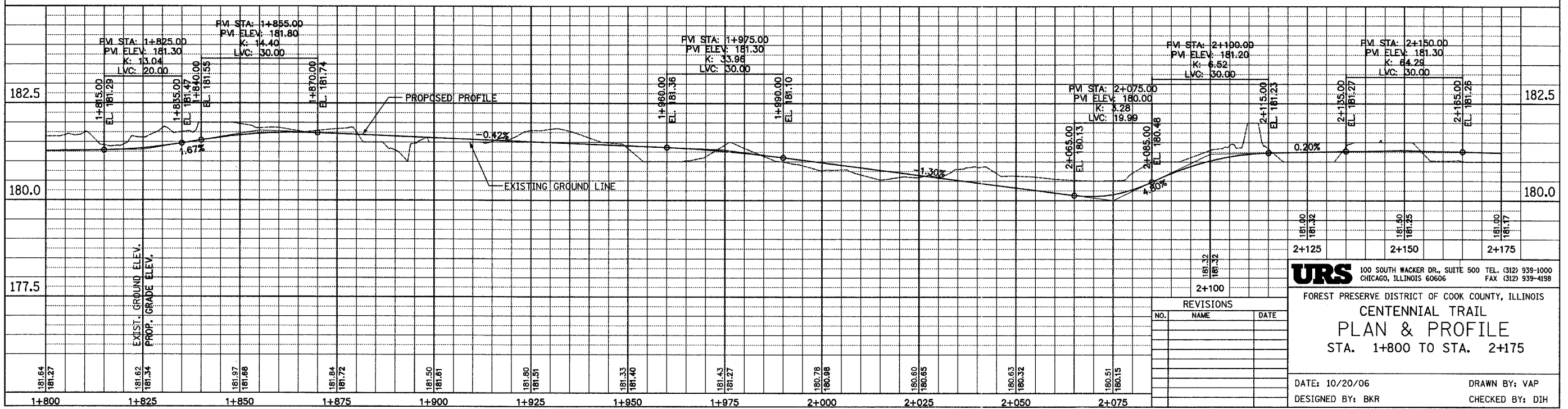
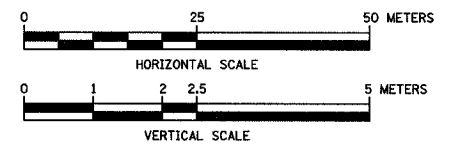
PROPOSED BICYCLE TRAIL
 AGGREGATE BASE COURSE, TYPE B, 150 mm
 HOT-MIX ASPHALT SURFACE COURSE, MIX C, N50, 50mm
 PAINT PAVT. MKG. LINE 100 mm (SOLID YELLOW ALONG \odot)



PROP. CURVE CL-8
 PI STA = 1+799.65
 N = 556494.7654
 E = 326993.1298
 $\Delta = 2^\circ 38' 24''$ (RT)
 R = 500.000 m
 T = 11.521 m
 L = 23.037 m
 E = 0.133 m

PROP. CURVE CL-30
 PI STA = 1+850.01
 N = 556515.5590
 E = 327039.0021
 $\Delta = 1^\circ 08' 41''$ (RT)
 R = 1000.000 m
 T = 9.990 m
 L = 19.979 m
 E = 0.050 m

PROP. CURVE CL-9
 PI STA = 2+033.85
 N = 556590.5439
 E = 327206.8410
 $\Delta = 1^\circ 53' 15''$ (RT)
 R = 1000.000 m
 T = 16.473 m
 L = 32.942 m
 E = 0.136 m



URS 100 SOUTH WACKER DR., SUITE 500 TEL: (312) 939-1000
 CHICAGO, ILLINOIS 60606 FAX: (312) 939-4198

FOREST PRESERVE DISTRICT OF COOK COUNTY, ILLINOIS
CENTENNIAL TRAIL
PLAN & PROFILE
 STA. 1+800 TO STA. 2+175

DATE: 10/20/06 DRAWN BY: VAP
 DESIGNED BY: BKR CHECKED BY: DIH

REVISIONS		
NO.	NAME	DATE