

| | | | |
|-------------------------------|--------|--------------|-----------|
| SECTION | COUNTY | TOTAL SHEETS | SHEET NO. |
| 94-F3000-05-BT | COOK | 102 | 18 |
| STA. TO STA. | | | |
| IDOT PROJECT NO. TE-D001(610) | | | |
| CENTENNIAL TRAIL | | | |
| CONTRACT NO. 83859 | | | |

PROPOSED BICYCLE TRAIL
 AGGREGATE BASE COURSE TYPE B, 150 mm
 HOT-MIX ASPHALT SURFACE COURSE,
 MIX C, N50, 50 mm
 PAINT PAV'T MKG. LINE, 100 mm
 (SOLID YELLOW ALONG C)

PROP. CURVE CL-14
 PI STA = 2+617.37
 N = 556626.4199
 E = 327719.8813
 $\Delta = 4^\circ 21' 08''$ (LT)
 R = 100.000 m
 T = 3.800 m
 L = 7.596 m
 E = 0.072 m

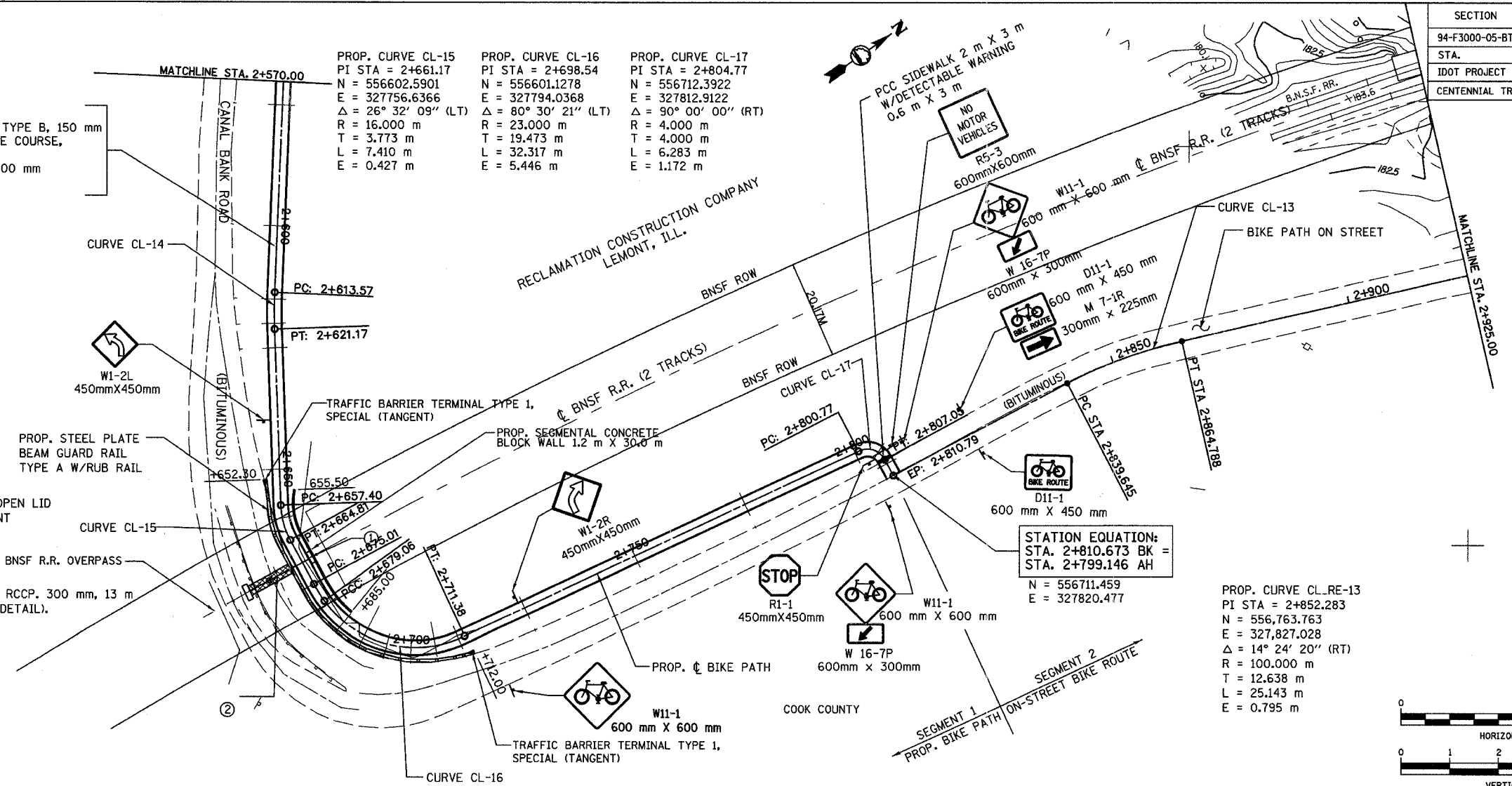
PROP. CURVE CL-15
 PI STA = 2+661.17
 N = 556602.5901
 E = 327756.6366
 $\Delta = 26^\circ 32' 09''$ (LT)
 R = 16.000 m
 T = 3.773 m
 L = 7.410 m
 E = 0.427 m

PROP. CURVE CL-16
 PI STA = 2+698.54
 N = 556601.1278
 E = 327794.0368
 $\Delta = 80^\circ 30' 21''$ (LT)
 R = 23.000 m
 T = 19.473 m
 L = 32.317 m
 E = 5.446 m

PROP. CURVE CL-17
 PI STA = 2+804.77
 N = 556712.3922
 E = 327812.9122
 $\Delta = 90^\circ 00' 00''$ (RT)
 R = 4.000 m
 T = 4.000 m
 L = 6.283 m
 E = 1.172 m

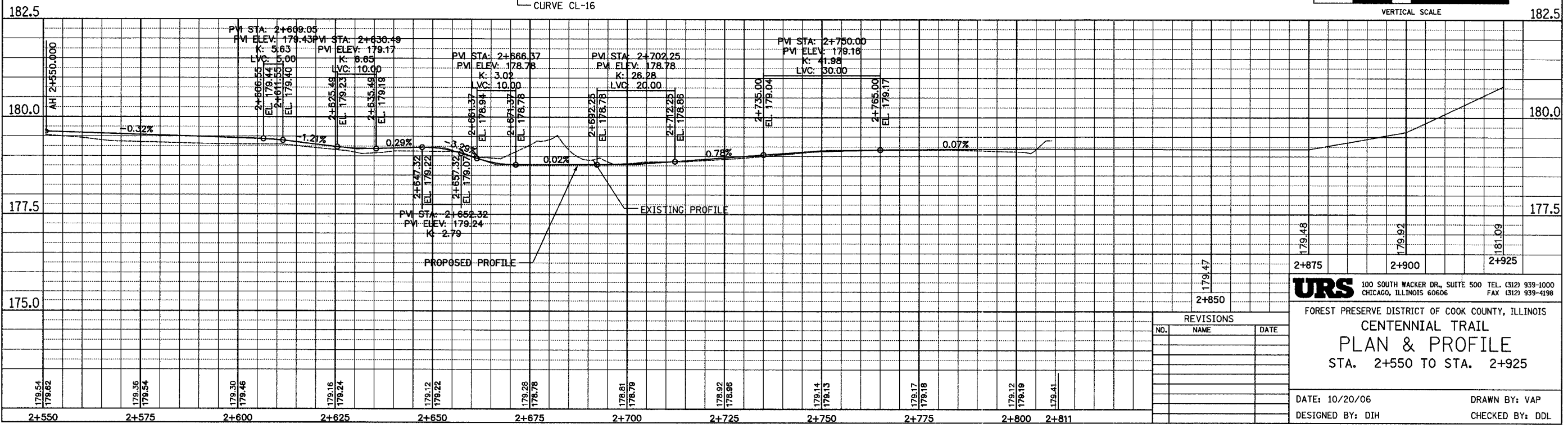
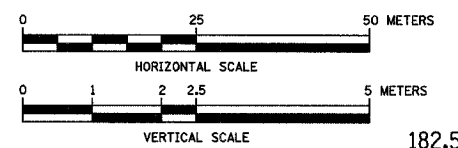
- ① STA. 2+670
 INLET TYPE A, TYPE 1 FRAME, OPEN LID
 50 mm BELOW EDGE OF PAVEMENT
 INV. = 177.90
- ② STA. 2+670.000
 PIPE CULVERT, CLASS A, TYPE 1, RCCP. 300 mm, 13 m
 CONCRETE HEADWALL 1 EA (SEE DETAIL).
 INV. = 177.60
- ③ RESTORE PAVEMENT:
 HOT-MIX ASPHALT BINDER,
 IL-1.90, N50, 60 mm

 HOT-MIX ASPHALT SURFACE,
 MIX D, N50, 45 mm



PROP. CURVE CL-RE-13
 PI STA = 2+852.283
 N = 556,763.763
 E = 327,827.028
 $\Delta = 14^\circ 24' 20''$ (RT)
 R = 100.000 m
 T = 12.638 m
 L = 25.143 m
 E = 0.795 m

STATION EQUATION:
 STA. 2+810.673 BK =
 STA. 2+799.146 AH
 N = 556711.459
 E = 327820.477



| REVISIONS | | |
|-----------|------|------|
| NO. | NAME | DATE |
| | | |
| | | |
| | | |
| | | |

URS 100 SOUTH WACKER DR., SUITE 500 TEL. (312) 939-1000
 CHICAGO, ILLINOIS 60606 FAX (312) 939-4198

FOREST PRESERVE DISTRICT OF COOK COUNTY, ILLINOIS
CENTENNIAL TRAIL
PLAN & PROFILE
 STA. 2+550 TO STA. 2+925

DATE: 10/20/06
 DESIGNED BY: DIH
 DRAWN BY: VAP
 CHECKED BY: DDL