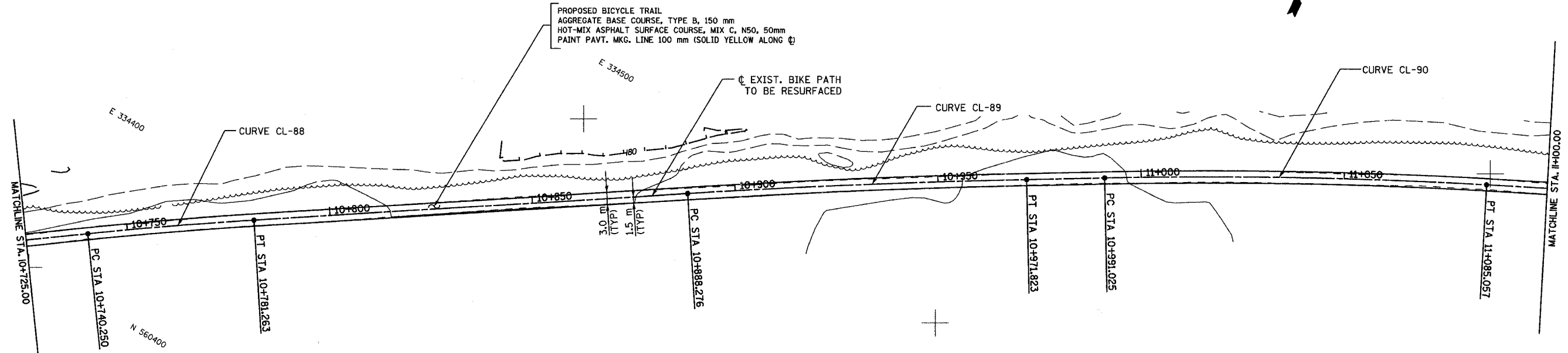


SECTION	COUNTY	TOTAL SHEETS	SHEET NO.
94-F3000-05-BT	COOK	102	40
STA. TO STA.			
IDOT PROJECT NO. TE-D001(610)			
CENTENNIAL TRAIL			

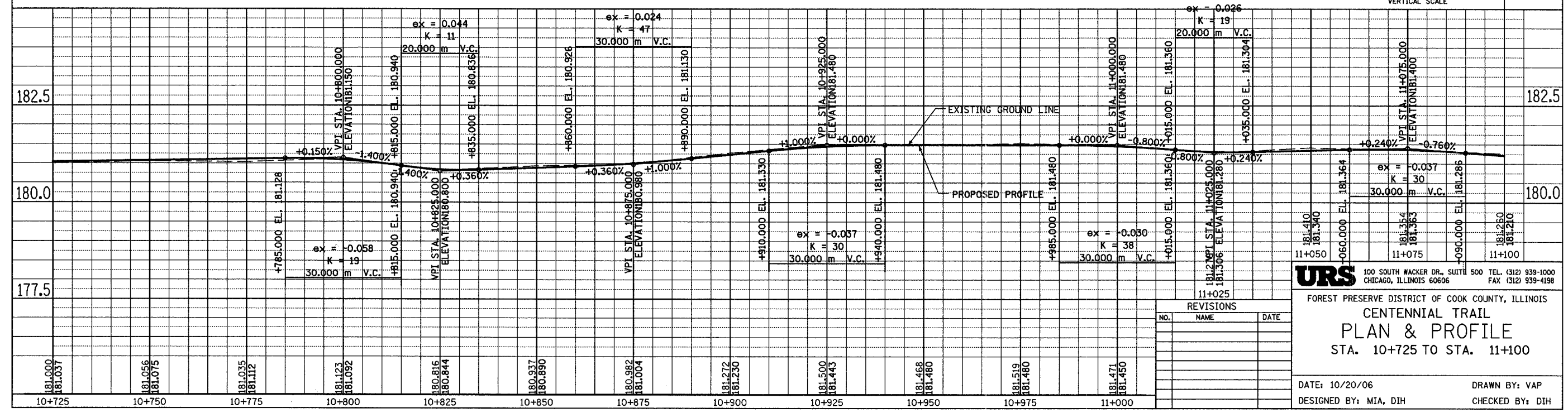
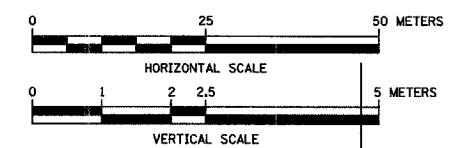
CONTRACT NO. 83859



CURVE CL-88
 PI STA = 10+760.760
 N = 560,426.458
 E = 334,425.088
 $\Delta = 2^\circ 20' 59''$ (RT)
 R = 1,000,000 m
 T = 20,509 m
 L = 41.013 m
 E = 0.210 m

CURVE CL-89
 PI STA = 10+930.056
 N = 560,520.058
 E = 334,563.163
 $\Delta = 2^\circ 23' 36''$ (RT)
 R = 2,000,000 m
 T = 41,780 m
 L = 83.547 m
 E = 0.436 m

CURVE CL-90
 PI STA = 11+038.063
 N = 560,575.966
 E = 334,658.589
 $\Delta = 4^\circ 18' 36''$ (RT)
 R = 1,250,000 m
 T = 47,038 m
 L = 94.032 m
 E = 0.885 m



URS 100 SOUTH WACKER DR., SUITE 500 TEL. (312) 939-1000
 CHICAGO, ILLINOIS 60606 FAX (312) 939-4198

FOREST PRESERVE DISTRICT OF COOK COUNTY, ILLINOIS
CENTENNIAL TRAIL
PLAN & PROFILE
 STA. 10+725 TO STA. 11+100

DATE: 10/20/06 DRAWN BY: VAP
 DESIGNED BY: MIA, DIH CHECKED BY: DIH

REVISIONS		
NO.	NAME	DATE