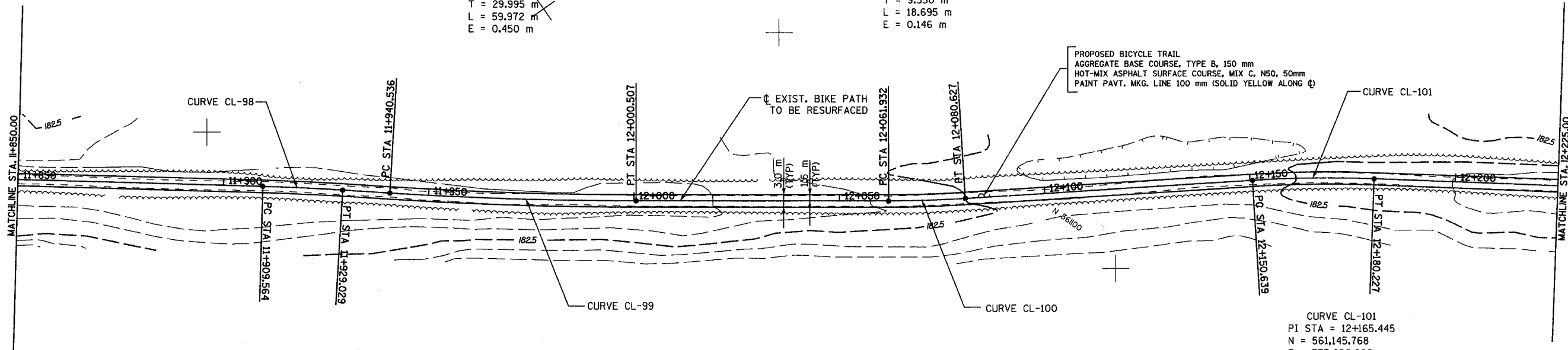


SECTION	COUNTY	TOTAL SHEETS	SHEET NO.
94-F3000-05-BT	COOK	102	43
STA.	TO STA.		
IDOT PROJECT NO. TE-D001(610)	CENTENNIAL TRAIL		
CONTRACT NO. 83859			

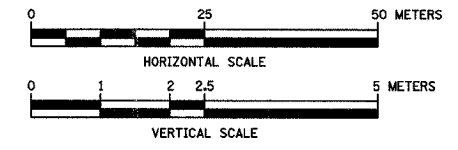
CURVE CL-99
 PI STA = 11+970.530
 N = 561,029.202
 E = 335,470.478
 $\Delta = 3^\circ 26' 10''$ (LT)
 R = 1,000.000 m
 T = 29.995 m
 L = 59.972 m
 E = 0.450 m

CURVE CL-100
 PI STA = 12+071.282
 N = 561,087.030
 E = 335,553.003
 $\Delta = 3^\circ 34' 14''$ (LT)
 R = 300.000 m
 T = 9.350 m
 L = 18.695 m
 E = 0.146 m



CURVE CL-98
 PI STA = 11+919.297
 N = 561,002.368
 E = 335,426.832
 $\Delta = 1^\circ 51' 32''$ (RT)
 R = 600.000 m
 T = 9.734 m
 L = 19.465 m
 E = 0.079 m

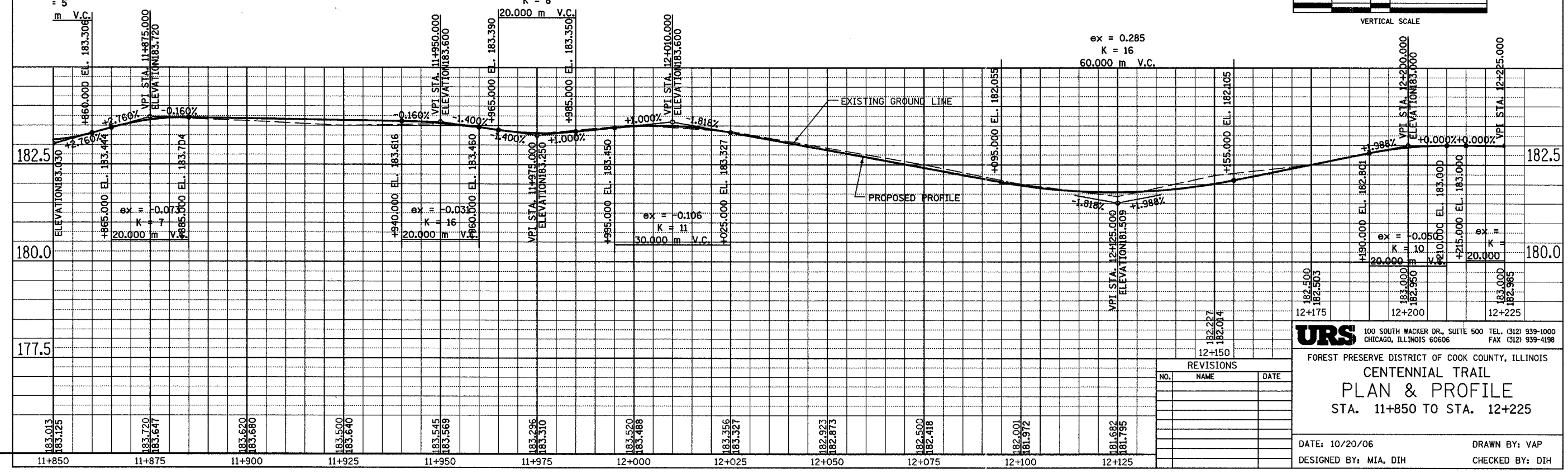
CURVE CL-101
 PI STA = 12+165.445
 N = 561,145.768
 E = 335,626.608
 $\Delta = 5^\circ 39' 04''$ (RT)
 R = 300.000 m
 T = 14.806 m
 L = 29.588 m
 E = 0.365 m



0.095
 " 5
 V.C.

ex = 0.060
 K = 8
 20.000 m V.C.

ex = 0.285
 K = 16
 60.000 m V.C.



REVISIONS		
NO.	NAME	DATE

URS 100 SOUTH WACKER DR., SUITE 500 TEL. (312) 939-1000
 CHICAGO, ILLINOIS 60606 FAX (312) 939-4198

FOREST PRESERVE DISTRICT OF COOK COUNTY, ILLINOIS
CENTENNIAL TRAIL
PLAN & PROFILE
 STA. 11+850 TO STA. 12+225

DATE: 10/20/06 DRAWN BY: VAP
 DESIGNED BY: MIA, DIH CHECKED BY: DIH