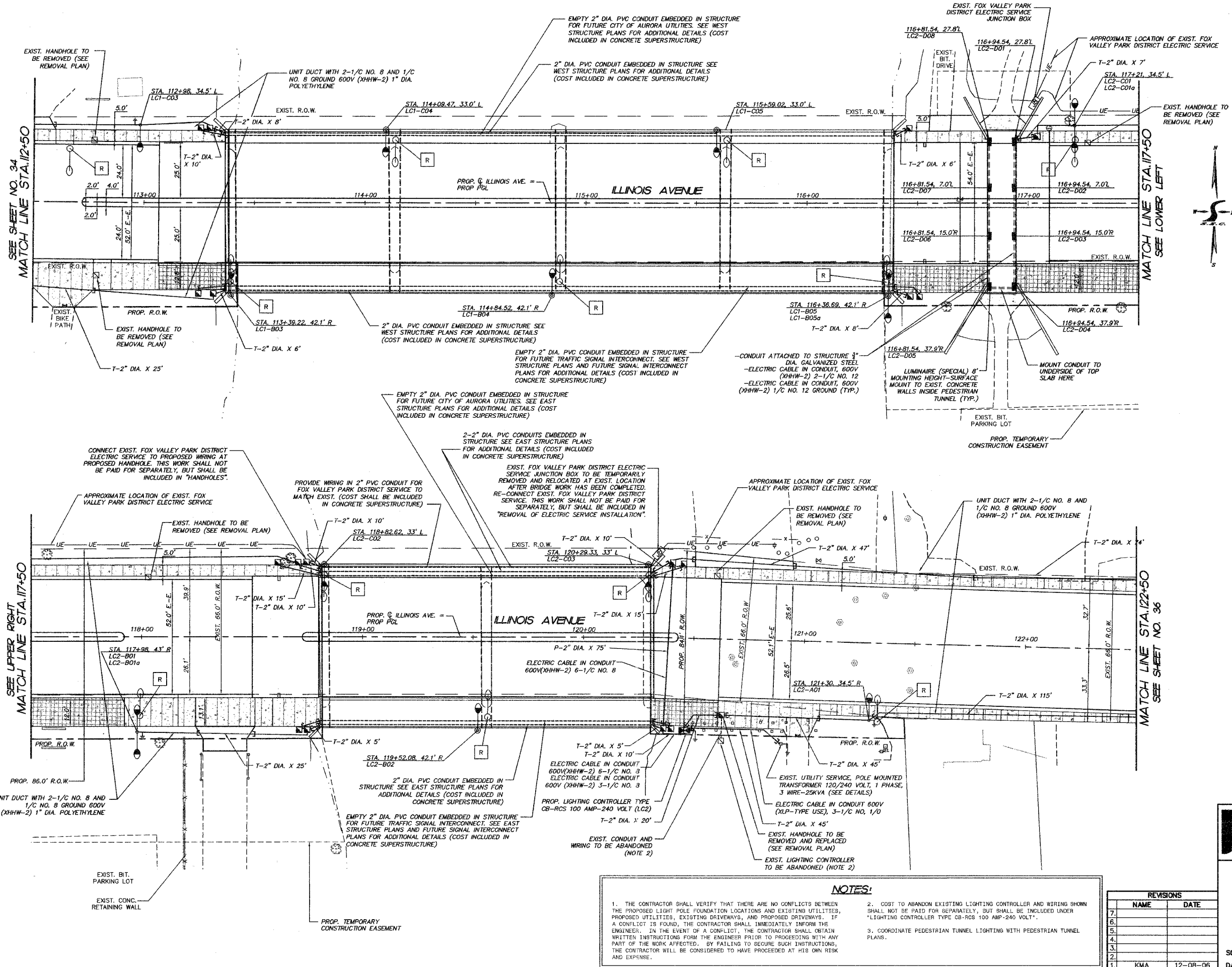


F.A.P. RTE.	SECTION	COUNTY	TOTAL SHEETS	SHEET NO.
1517	03-00247-00-BR	KANE	121	35
STA.	112+50	TO STA.	122+50	
FED. ROAD DIST. NO. 1	ILLINOIS	HIGHWAY PROJECT		
E-03 OF E-09				
CONTRACT #: 83867				



**LEGEND:**

- REMOVAL OF EXISTING LIGHTING UNIT, SALVAGE
- EXISTING LIGHT POLE
- EXISTING LIGHT POLE WITH DOUBLE MAST ARM AND LUMINAIRE
- EXISTING LIGHTING CONTROLLER
- EXISTING HANDHOLE
- LIGHT POLE, STEEL, 31 FT M.H., 12 FT MAST ARM
- LIGHT POLE, STEEL, 31 FT M.H., 12 FT MAST ARM (BRIDGE MOUNTED)
- LIGHT POLE, STEEL, 31 FT M.H., 12 FT MAST ARM, TWIN
- LIGHT POLE, STEEL, 31 FT M.H., 12 FT MAST ARM, TWIN (BRIDGE MOUNTED)
- PROPOSED LUMINAIRE (SPECIAL)
- GROUND ROD, 3/8" DIA. X 10 FT.
- PROPOSED HANDHOLE
- PROPOSED LIGHTING CONTROLLER TYPE CB-RCS 100 AMP - 240 VOLT
- STA. XXX+XX.XX' R  
LC2-XXX
- POLE NUMBER
- LIGHTING CIRCUIT BREAKER DESIGNATION
- LIGHTING CONTROLLER DESIGNATION
- PVC CONDUIT EMBEDDED IN STRUCTURE
- ELECTRIC CABLE IN UNIT DUCT, NUMBER OF CONDUCTORS AND DIAMETER OF CONDUIT AS SHOWN
- T/P CONDUIT IN TRENCH (T) CONDUIT PUSHED (P) RIGID GALVANIZED STEEL (RSGC) CONDUIT DIA. X LENGTH

**NOTES:**

1. THE CONTRACTOR SHALL VERIFY THAT THERE ARE NO CONFLICTS BETWEEN THE PROPOSED LIGHT POLE FOUNDATION LOCATIONS AND EXISTING UTILITIES, PROPOSED UTILITIES, EXISTING DRIVEWAYS, AND PROPOSED DRIVEWAYS. IF A CONFLICT IS FOUND, THE CONTRACTOR SHALL IMMEDIATELY INFORM THE ENGINEER. IN THE EVENT OF A CONFLICT, THE CONTRACTOR SHALL OBTAIN WRITTEN INSTRUCTIONS FROM THE ENGINEER PRIOR TO PROCEEDING WITH ANY PART OF THE WORK AFFECTED. BY FAILING TO SECURE SUCH INSTRUCTIONS, THE CONTRACTOR WILL BE CONSIDERED TO HAVE PROCEEDED AT HIS OWN RISK AND EXPENSE.
2. COST TO ABANDON EXISTING LIGHTING CONTROLLER AND WIRING SHOWN SHALL NOT BE PAID FOR SEPARATELY, BUT SHALL BE INCLUDED UNDER "LIGHTING CONTROLLER TYPE CB-RCS 100 AMP-240 VOLT".
3. COORDINATE PEDESTRIAN TUNNEL LIGHTING WITH PEDESTRIAN TUNNEL PLANS.

**REVISIONS**

NO.	NAME	DATE
7.		
6.		
5.		
4.		
3.		
2.		
1.	KMA	12-08-06

**SMITH ENGINEERING CONSULTANTS, INC.**  
 CIVIL/STRUCTURAL ENGINEERS AND SURVEYORS  
 4600 PIERCE PARKWAY, SUITE 201  
 MARIETTA, ILLINOIS 60060  
 PH: 815-385-1778 FAX: 815-385-1781  
 www.smithengineering.com E-MAIL: sec@smithengineering.com  
 McHENRY HUNTERDON YORKVILLE  
 ILLINOIS PROFESSIONAL DESIGN FIRM # 184-000108

ILLINOIS DEPARTMENT OF TRANSPORTATION  
 CITY OF AURORA  
 ILLINOIS AVENUE OVER THE FOX RIVER  
 LIGHTING PLANS AND DETAILS  
 STA. 107+50 TO STA. 117+50  
 SCALE: 1" = 20'  
 DATE: 07-28-2006  
 DRAWN BY: MPL  
 CHECKED BY: GB

ROUTE FILE: STANDARD  
 VISA: C313  
 COMP. FILE: 050181-622.dwg