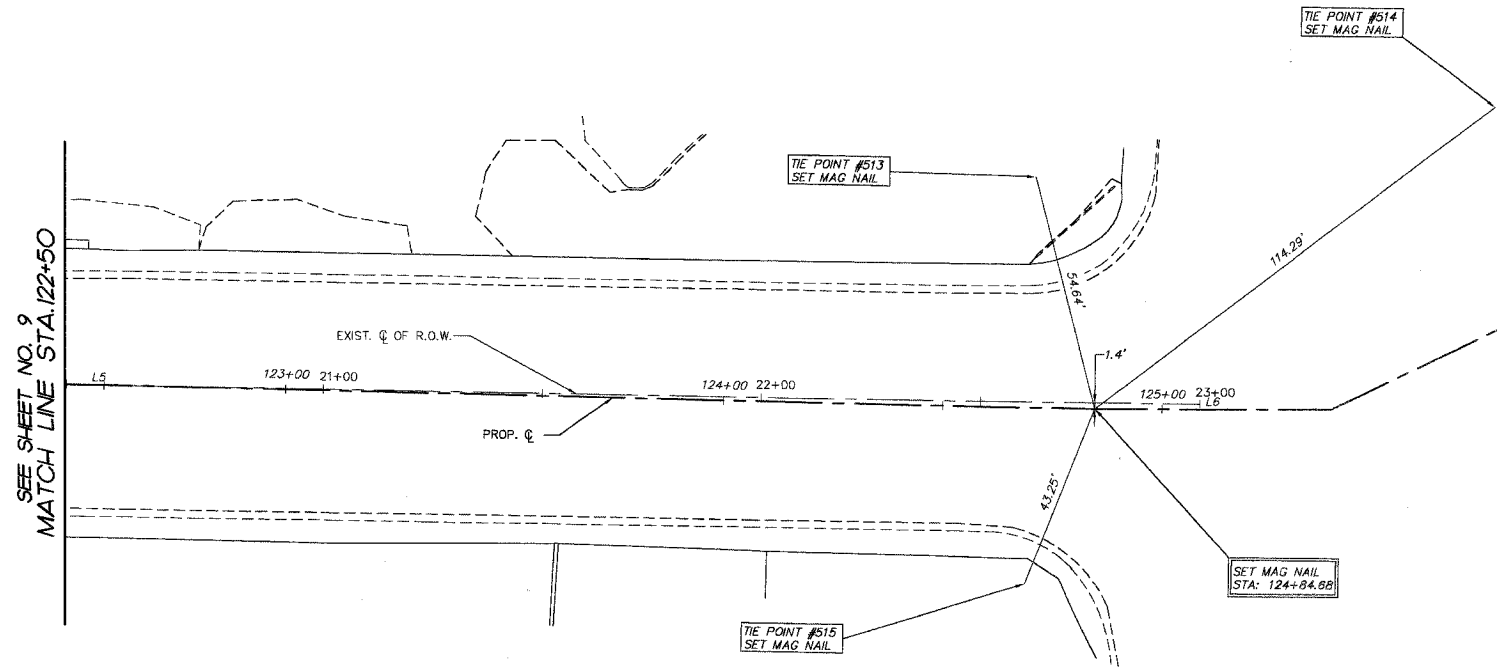


F.A.P. RTE.	SECTION	COUNTY	TOTAL SHEETS	SHEET NO.
1517	03-00247-00-BR	KANE	121	10
STA.	122+50	TO STA.	125+00	
FED. ROAD DIST. NO. 1	ILLINOIS HIGHWAY PROJECT		CONTRACT #: 83867	



LINE	LENGTH	BEARING	BEGIN STA.	END STA.
L1	500.00'	S89°04'04"W	100+00	105+00
L2	401.59'	S89°04'04"W	105+00	109+01.59
L3	406.52'	N89°35'59"E	109+01.59	113+08.10
L4	722.16'	N89°39'04"E	113+08.10	120+30.26
L5	454.41'	S89°34'41"E	120+30.26	124+84.68
L6	53.89'	N89°37'36"E	124+84.68	125+38.57
L7	283.73'	N63°42'21"E	125+38.57	128+22.30
L8	271.84'	N89°24'05"E	128+22.30	130+94.14

TIE POINT	NORTHING	EASTING
513	1859120.46	991586.89
514	1859137.68	991691.34
515	1859027.26	991585.61



SEE SHEET NO. 9
MATCH LINE STA. 122+50

PLOT FILE STANDARD
VIEW: CE-10
COMP. FILE: 050181-828.dwg

REVISIONS		
	NAME	DATE
7.		
6.		
5.		
4.		
3.		
2.		
1.		

SMITH ENGINEERING CONSULTANTS, INC.
 CIVIL/STRUCTURAL ENGINEERS AND SURVEYORS
 4500 PULME PARKWAY SUITE 201
 MOKENS, ILLINOIS 60050
 PH: 815-385-1778 FAX: 815-385-1781
 www.smithengineering.com E-MAIL: sec@smithengineering.com
 • McHENRY • HUNTLEY • VICKSBURG
 ILLINOIS PROFESSIONAL DESIGN FIRM # 184-000108

ILLINOIS DEPARTMENT OF TRANSPORTATION
 CITY OF AURORA
 ILLINOIS AVENUE OVER THE FOX RIVER
 ALIGNMENT AND TIES
 STA 122+50 TO STA 125+00

SCALE: 1" = 20'
 DATE 07-28-2006

DRAWN BY MPL
 CHECKED BY JLP