

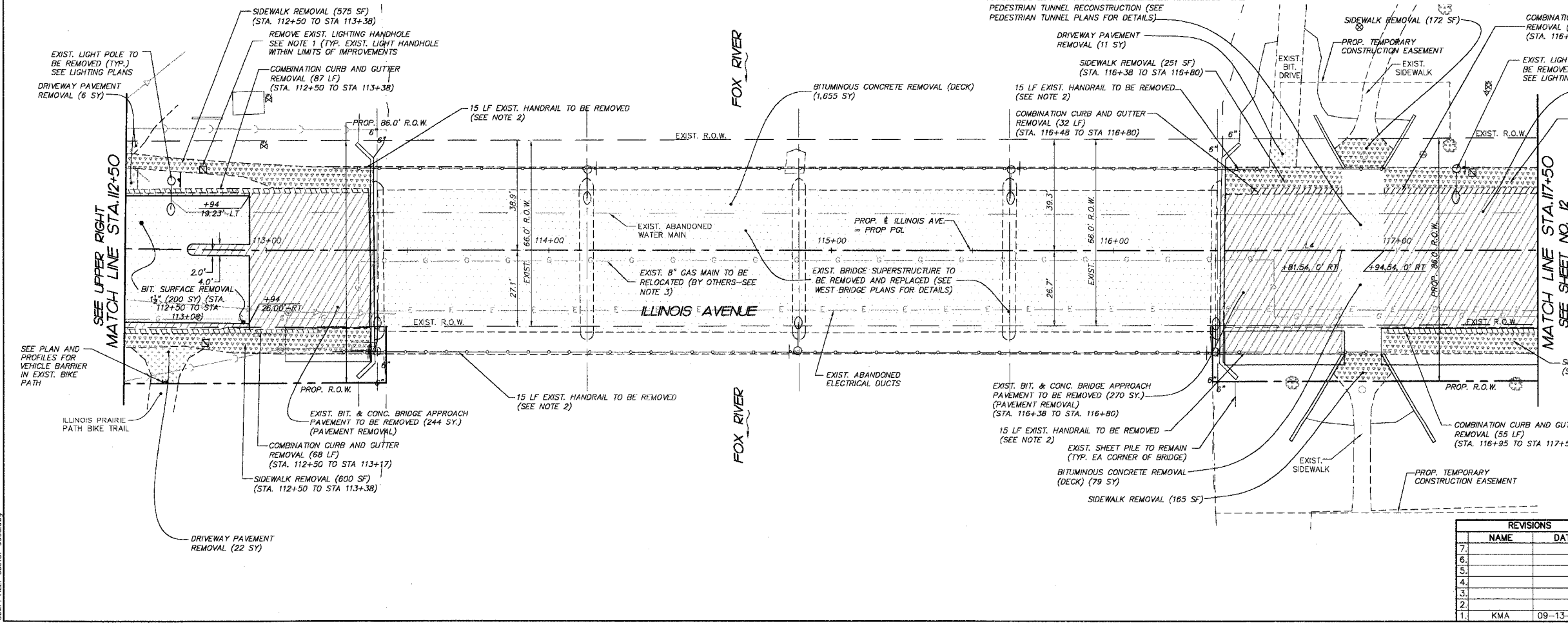
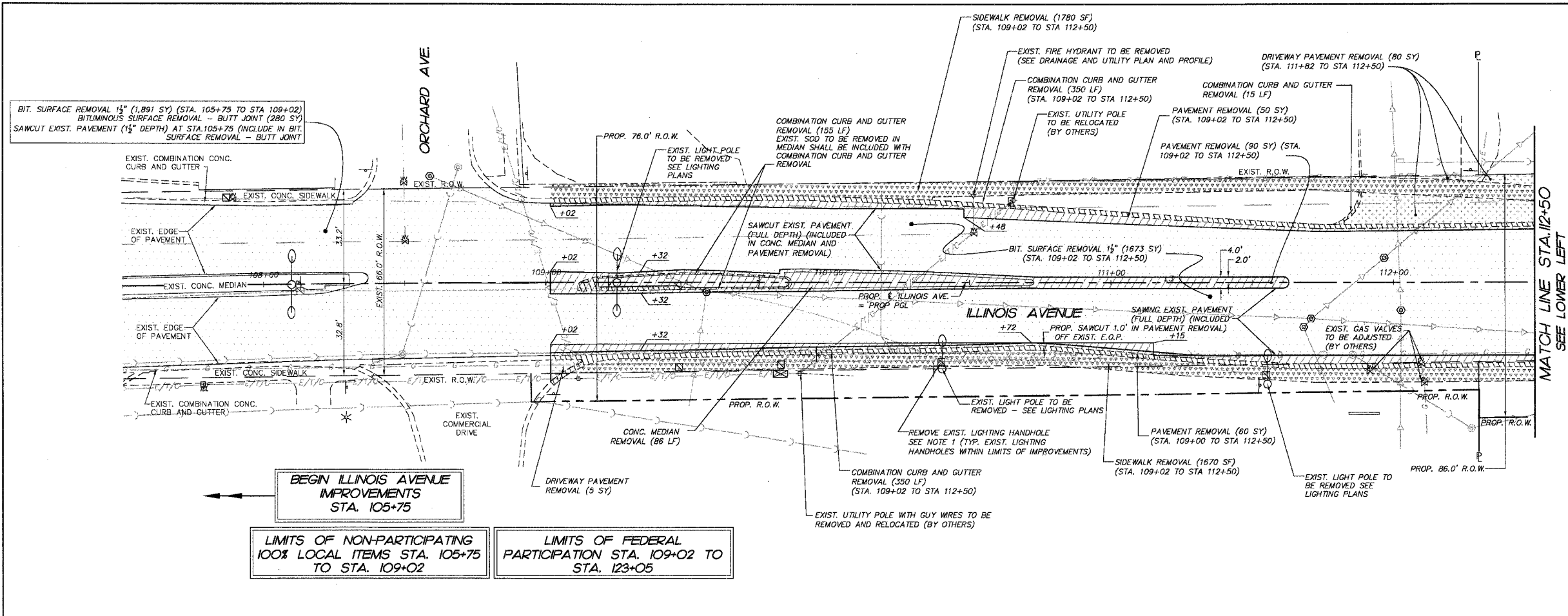
F.A.P. RTE.	SECTION	COUNTY	TOTAL SHEETS	SHEET NO.
1517	03-00247-00-BR	KANE	121	11
STA. 107+50		TO STA. 117+50		
FED. ROAD DIST. NO. 1 ILLINOIS HIGHWAY PROJECT				
CONTRACT: 83867				

LINE	LENGTH	BEARING	BEGIN STA.	END STA.
L1	500.00'	S89°04'04"W	100+00	105+00
L2	401.59'	S89°04'04"W	105+00	109+01.59
L3	406.52'	N89°35'59"E	109+01.59	113+08.10
L4	722.16'	N88°59'04"E	113+08.10	120+30.26
L5	454.41'	S89°34'41"E	120+30.26	124+84.68
L6	53.89'	N89°37'36"E	124+84.68	125+38.57
L7	283.73'	N63°42'21"E	125+38.57	128+22.30
L8	271.84'	N89°24'05"E	128+22.30	130+94.14

- NOTES:**
- EXISTING LIGHTING HANDHOLE REMOVAL SHALL BE INCLUDED UNDER REMOVAL OF EXISTING LIGHTING UNIT, SALVAGE.
  - EXISTING HANDRAIL REMOVAL OFF OF BRIDGES SHALL BE INCLUDED UNDER "SIDEWALK REMOVAL"
  - CONTRACTOR SHALL VERIFY STATUS OF 8" GAS MAIN WITH GAS COMPANY BEFORE BRIDGE SUPERSTRUCTURE REMOVAL.

**PROJECT LEGEND:**

- DENOTES BITUMINOUS SURFACE REMOVAL, 1 1/2" OR BITUMINOUS CONCRETE REMOVAL (DECK)
- DENOTES BITUMINOUS SURFACE REMOVAL, - BUTT JOINT
- DENOTES PAVEMENT REMOVAL OR CONCRETE MEDIAN REMOVAL
- DENOTES SIDEWALK REMOVAL
- DENOTES COMBINATION CURB AND GUTTER REMOVAL
- DENOTES DRIVEWAY PAVEMENT REMOVAL
- DENOTES TREE REMOVAL (6 TO 15 UNITS DIAMETER)



**SMITH ENGINEERING CONSULTANTS, INC.**  
 CIVIL/STRUCTURAL ENGINEERS AND SURVEYORS  
 4500 PRIME PARKWAY, SUITE 201  
 McHENRY, ILLINOIS 60050  
 PH: 815-385-1770 FAX: 815-385-1781  
 www.smithengineering.com E-MAIL: sec@smithengineering.com  
 McHENRY HUNTLEY YORKVILLE  
 ILLINOIS PROFESSIONAL DESIGN FIRM # 184-000108

ILLINOIS DEPARTMENT OF TRANSPORTATION

CITY OF AURORA  
 ILLINOIS AVENUE OVER THE FOX RIVER  
 REMOVAL PLAN  
 STA 107+50 TO STA 117+50

SCALE: 1" = 20'  
 DATE 07-28-2006

DRAWN BY MPL  
 CHECKED BY JLP

REVISIONS	
NO.	DATE
7.	
6.	
5.	
4.	
3.	
2.	
1.	KMA 09-13-2006

PLOT FILE: STANDARD  
 VIEW: CE-11  
 COMP. FILE: 050181-9006.dwg