

F.A.P. RTE.	SECTION	COUNTY	TOTAL SHEETS	SHEET NO.
1517	03-00247-00-BR	KANE	121	19
STA. 119+50	TO STA. 129+82			
FED. ROAD DIST. NO. 1 ILLINOIS		HIGHWAY PROJECT		
CONTRACT #: 83867				

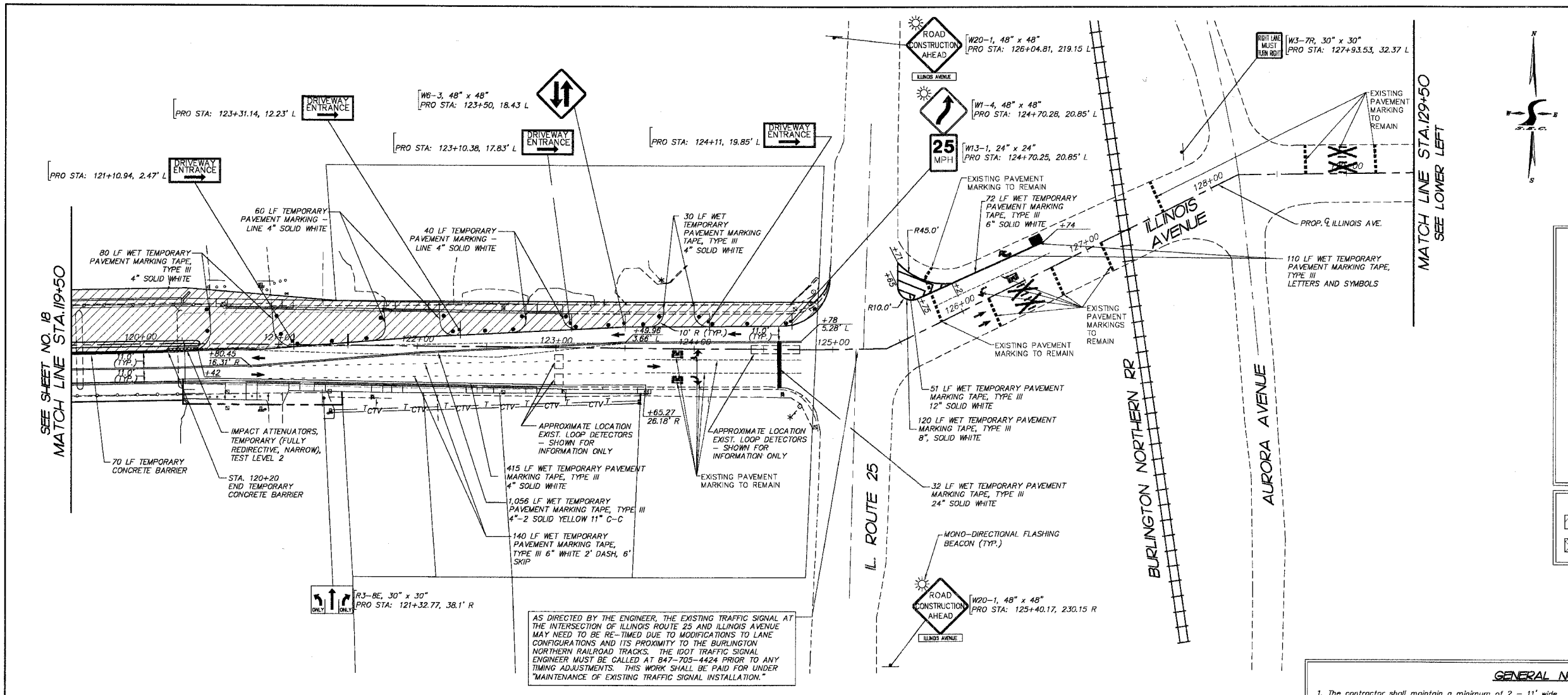
- GENERAL NOTES & SYMBOL LEGEND**
- ALL SIGNING & STRIPING TO BE IN ACCORDANCE WITH THE FOLLOWING STATE STANDARDS:

720006	701606
702001	701801

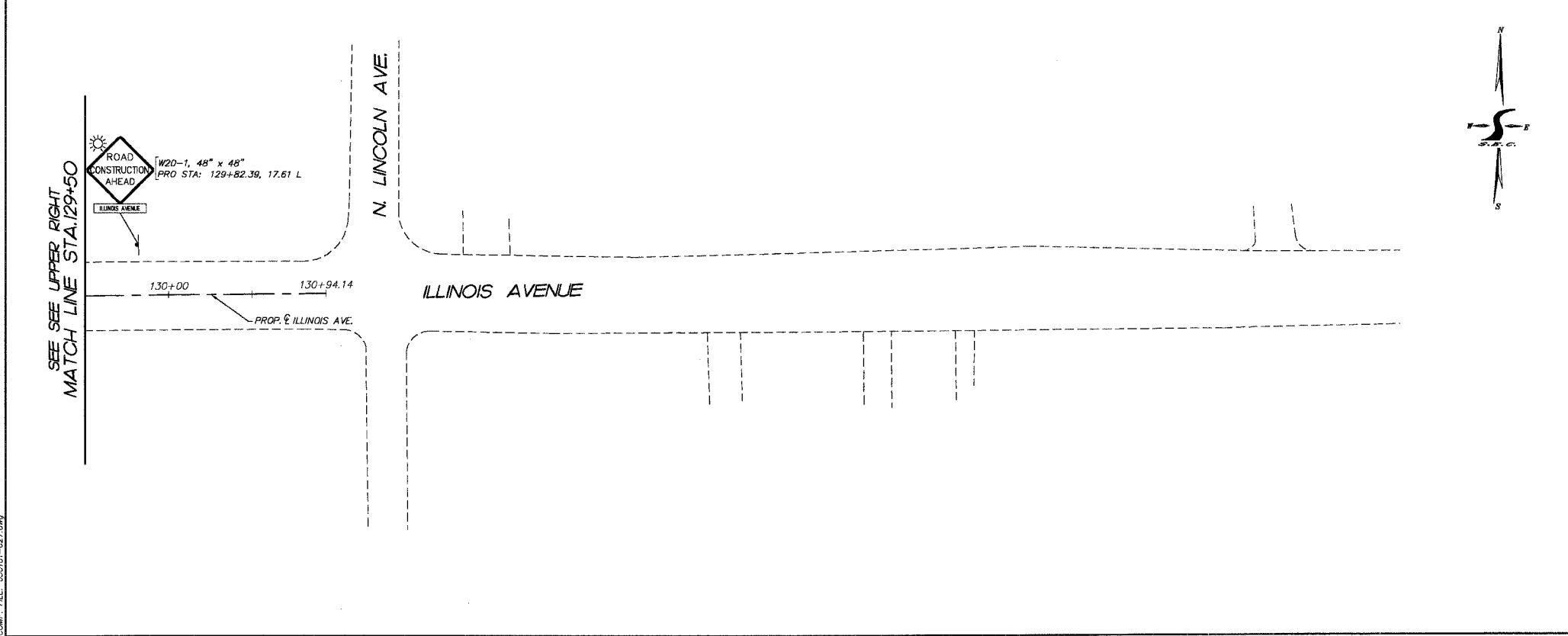
TRAFFIC CONTROL AND PROTECTION FOR SIDE ROADS, INTERSECTIONS AND DRIVEWAYS
 PAVEMENT MARKING LETTERS AND SYMBOLS FOR TRAFFIC STAGING
 - CONTRACTOR TO MAINTAIN TEMPORARY ACCESS AT ALL TIMES DURING CONSTRUCTION TO ALL DRIVEWAYS ALONG THE LIMITS OF CONSTRUCTION.
 - | | |
|--|---|
| | TYPE II BARRICADE WITH STEADY BURN MONODIRECTIONAL BEACON |
|--|---|
 - | | |
|--|--------------------|
| | TYPE III BARRICADE |
|--|--------------------|
 - | | |
|--|-------------------------------------|
| | INDICATES DIRECTION OF TRAFFIC FLOW |
|--|-------------------------------------|

- HATCH LEGEND**
- DENOTES CONSTRUCTION AREA FOR IMPROVEMENTS.
 - DENOTES IMPACT ATTENUATORS, TEMPORARY (FULLY REDIRECTIVE, NARROW) TEST LEVEL 2

- GENERAL NOTES**
- The contractor shall maintain a minimum of 2 - 11' wide lanes for two-way traffic flow.
 - The contractor shall maintain traffic in accordance with the special provisions, state standards, standard specifications and as directed by the Engineer.
 - The Engineer shall be informed 48 hours in advance of any change in construction staging.
 - Type II barricades and vertical panels shall be equipped with mono-directional steady burn lights and shall be placed at 50' intervals along the proposed work zone, 25' intervals within taper sections, and 12' intervals around radii as indicated on the plans or as directed by the Engineer.
 - The Contractor shall be required to remove all existing pavement markings which conflict with the designated traffic control plan. This work shall be paid for as pavement marking removal. The Contractor shall mark a double 4" wide solid centerline 11" C/C during Stage I and Stage II traffic operations as shown on the plans. This work shall be paid for at the contract unit price for WET TEMPORARY PAVEMENT MARKING TAPE, TYPE III.
 - The furnishing, installing, and relocation of all traffic signs shall be in accordance with the Manual on Uniform Traffic Control Devices and the Standard Specifications. This work shall be included in the cost for traffic control and protection. All conflicting traffic signs shall be covered as directed by the Engineer. This shall be incidental to the cost of traffic control and protection.
 - Ingress and egress to driveways and side streets shall be maintained as shown on the plans and/or as directed by the Engineer. Quantities for Temporary Access (Private Entrance) and Temporary Access (Commercial Entrance) have been included in the contract for driveway and side street access. A minimum of one (1) sidewalk shall be maintained throughout the duration of the project for pedestrian traffic.
 - The Contractor shall provide and install two (2) weighted sand bags on each Type II barricade used - one (1) weighted sand bag across each bottom rail. All Type III barricades shall require a minimum of four (4) sandbags per barricade.
 - The Contractor shall be responsible for ensuring drainage of the roadway during all stages of construction.
 - Temporary protection shall adhere to Section 703 of the Standard Specifications and the project special provisions.
 - The existing light poles on the south side of Illinois Avenue shall be maintained and remain functional for the duration of Stage I Construction. This work shall not be paid for separately, but shall be included in the cost of TRAFFIC CONTROL PROTECTION. Coordinate with Lighting Plans and Details.
 - The cost to relocate impact attenuators shall be included in the cost of IMPACT ATTENUATORS, TEMPORARY (FULLY REDIRECTIVE, NARROW) TEST LEVEL 2.



AS DIRECTED BY THE ENGINEER, THE EXISTING TRAFFIC SIGNAL AT THE INTERSECTION OF ILLINOIS ROUTE 25 AND ILLINOIS AVENUE MAY NEED TO BE RE-TIMED DUE TO MODIFICATIONS TO LANE CONFIGURATIONS AND ITS PROXIMITY TO THE BURLINGTON NORTHERN RAILROAD TRACKS. THE IDOT TRAFFIC SIGNAL ENGINEER MUST BE CALLED AT 847-705-4424 PRIOR TO ANY TIMING ADJUSTMENTS. THIS WORK SHALL BE PAID FOR UNDER "MAINTENANCE OF EXISTING TRAFFIC SIGNAL INSTALLATION."



REVISIONS	
NO.	DATE
7.	
6.	
5.	
4.	
3.	
2.	
1.	

SMITH ENGINEERING CONSULTANTS, INC.
 CIVIL/STRUCTURAL ENGINEERS AND SURVEYORS
 4500 PRIME PARKWAY, SUITE 201
 McHENRY, ILLINOIS 60050
 PH: 815-308-1778 FAX: 815-308-1781
 www.smithengineering.com E-MAIL: sec@smithengineering.com
 #McHENRY #BUNTVILLE #YORKVILLE
 ILLINOIS PROFESSIONAL DESIGN FIRM # 184-000108

ILLINOIS DEPARTMENT OF TRANSPORTATION
 CITY OF AURORA
 ILLINOIS AVENUE OVER THE FOX RIVER
 SUGGESTED MAINTENANCE OF TRAFFIC PLAN
 STAGE 1
 STA 119+50 TO STA 129+82
 SCALE: 1" = 40'
 DATE 07-28-2006
 DRAWN BY MPL
 CHECKED BY JLP

PLC FILE: STANDARD
 PLOT FILE: 1517
 COMP. FILE: 030217-837.dwg