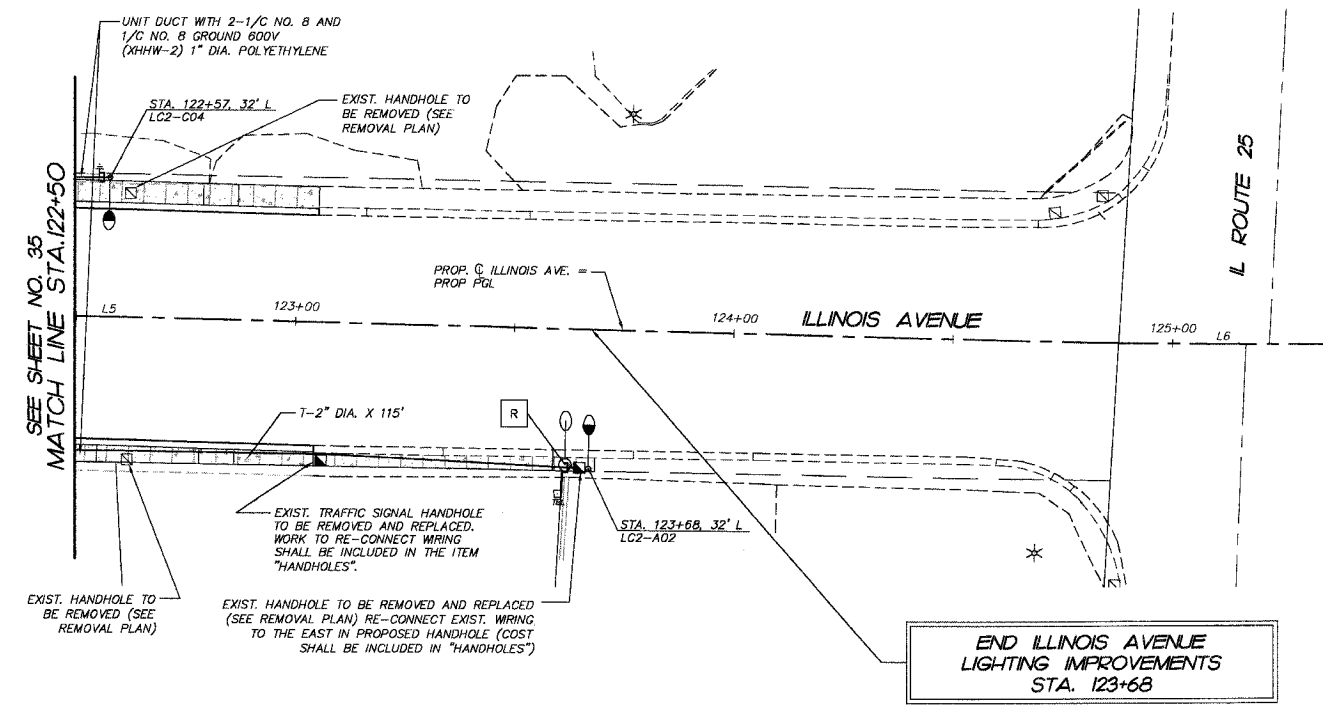


| F.A.P. RTE. | SECTION | COUNTY | TOTAL SHEETS | SHEET NO. |
|-----------------------|----------------|--------------------------|--------------|-----------|
| 1517 | 03-00247-00-BR | KANE | 121 | 36 |
| STA. | 122+50 | TO STA. | 125+00 | |
| FED. ROAD DIST. NO. 1 | | ILLINOIS HIGHWAY PROJECT | | |
| E-04 OF E-09 | | | | |
| CONTRACT #: 83867 | | | | |



LEGEND:

- REMOVAL OF EXISTING LIGHTING UNIT, SALVAGE
- EXISTING LIGHT POLE
- EXISTING LIGHT POLE WITH DOUBLE MAST ARM AND LUMINAIRE
- EXISTING LIGHTING CONTROLLER
- EXISTING HANDHOLE
- LIGHT POLE, STEEL, 31 FT M.H., 12 FT MAST ARM
- LIGHT POLE, STEEL, 31 FT M.H., 12 FT MAST ARM (BRIDGE MOUNTED)
- LIGHT POLE, STEEL, 31 FT M.H., 12 FT MAST ARM, TWIN
- LIGHT POLE, STEEL, 31 FT M.H., 12 FT MAST ARM, TWIN (BRIDGE MOUNTED)
- PROPOSED LUMINAIRE (SPECIAL)
- GROUND ROD, 3/8" DIA. X 10 FT.
- PROPOSED HANDHOLE
- PROPOSED LIGHTING CONTROLLER TYPE CB-RCS 100 AMP - 240 VOLT
- STA. XXX+XX, XX' R --- POLE LOCATION
- POLE NUMBER
- LIGHTING CIRCUIT BREAKER DESIGNATION
- LIGHTING CONTROLLER DESIGNATION
- PVC CONDUIT EMBEDDED IN STRUCTURE
- ELECTRIC CABLE IN UNIT DUCT, NUMBER OF CONDUCTORS AND DIAMETER OF CONDUIT AS SHOWN
- CONDUIT IN TRENCH (T) CONDUIT PUSHED (P) RIGID GALVANIZED STEEL (RGS) CONDUIT DIA. X LENGTH

**END ILLINOIS AVENUE
LIGHTING IMPROVEMENTS
STA. 123+68**

NOTES:

1. THE CONTRACTOR SHALL VERIFY THAT THERE ARE NO CONFLICTS BETWEEN THE PROPOSED LIGHT POLE FOUNDATION LOCATIONS AND EXISTING UTILITIES, PROPOSED UTILITIES, EXISTING DRIVEWAYS, AND PROPOSED DRIVEWAYS. IF A CONFLICT IS FOUND, THE CONTRACTOR SHALL IMMEDIATELY INFORM THE ENGINEER. IN THE EVENT OF A CONFLICT, THE CONTRACTOR SHALL OBTAIN WRITTEN INSTRUCTIONS FROM THE ENGINEER PRIOR TO PROCEEDING WITH ANY PART OF THE WORK AFFECTED. BY FAILING TO SECURE SUCH INSTRUCTIONS, THE CONTRACTOR WILL BE CONSIDERED TO HAVE PROCEEDED AT HIS OWN RISK AND EXPENSE.

| REVISIONS | |
|-----------|------|
| NAME | DATE |
| 7. | |
| 6. | |
| 5. | |
| 4. | |
| 3. | |
| 2. | |
| 1. | |

SMITH ENGINEERING CONSULTANTS, INC.
 CIVIL/STRUCTURAL ENGINEERS AND SURVEYORS
 4500 PRIME PARKWAY, SUITE 201
 MCKENNA, ILLINOIS 60050
 PH: 815-385-1778 FAX: 815-385-1781
 www.smithengineering.com E-MAIL: sec@smithengineering.com
 • MCKENNA • HUNTERLY • YORKVILLE
 ILLINOIS PROFESSIONAL DESIGN FIRM # 184-000108

ILLINOIS DEPARTMENT OF TRANSPORTATION
 CITY OF AURORA
 ILLINOIS AVENUE OVER THE FOX RIVER
 LIGHTING PLAN AND DETAILS
 STA 122+50 TO STA 125+00

SCALE: 1" = 20'
 DATE 07-28-2006
 DRAWN BY MPL
 CHECKED BY GB

PLOT FILE: STANDARD
 VIEW: CE-36
 COMP. FILE: 050101-022.dwg