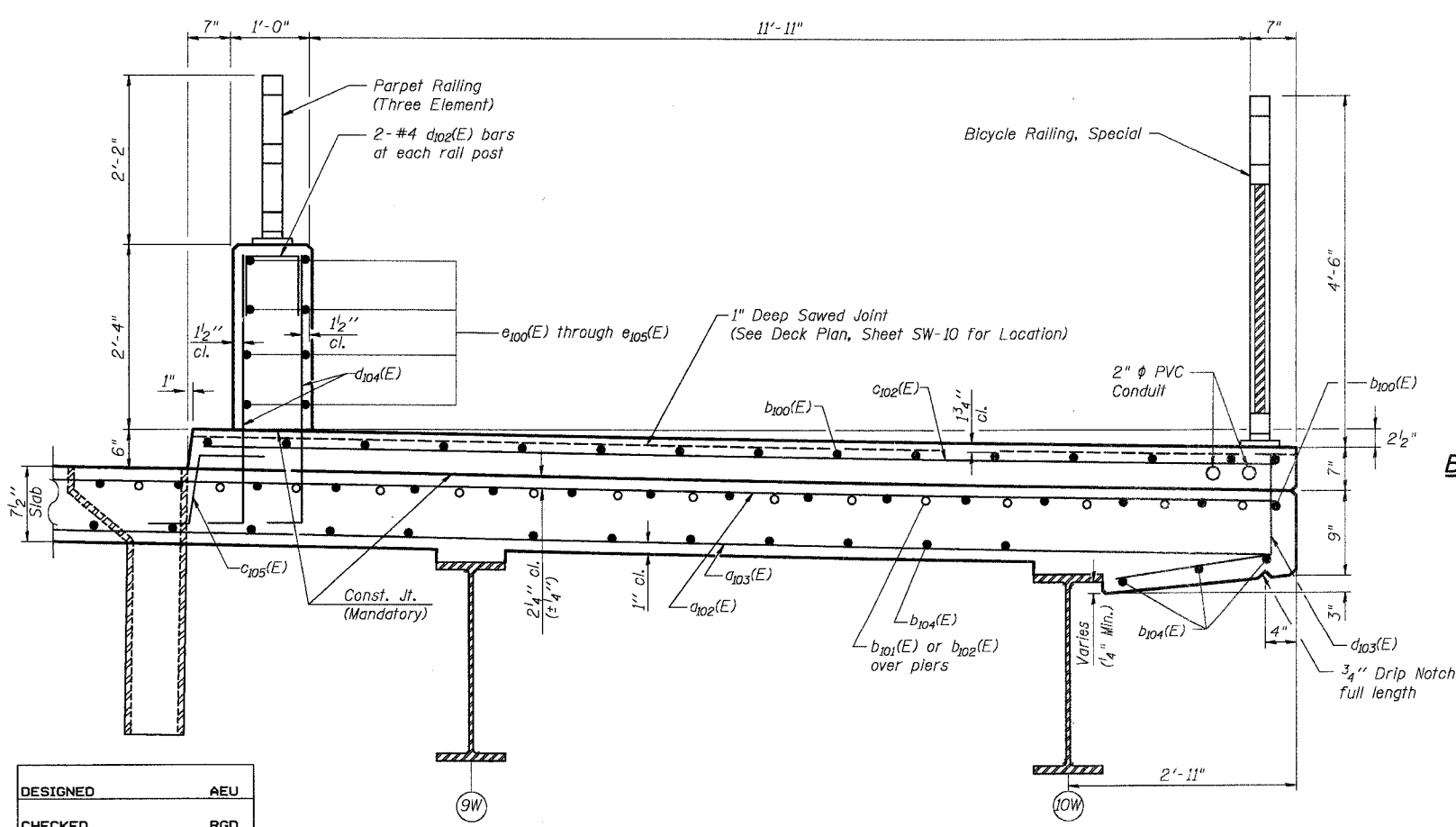
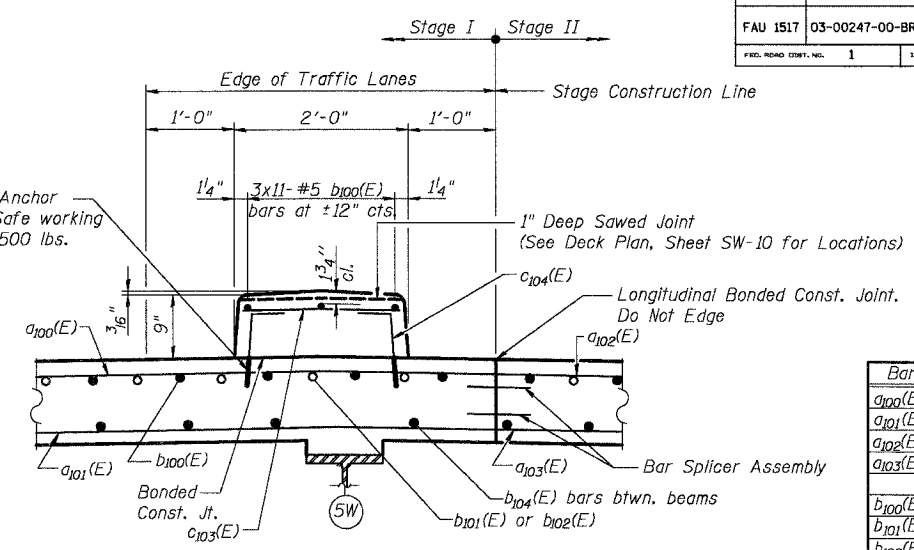


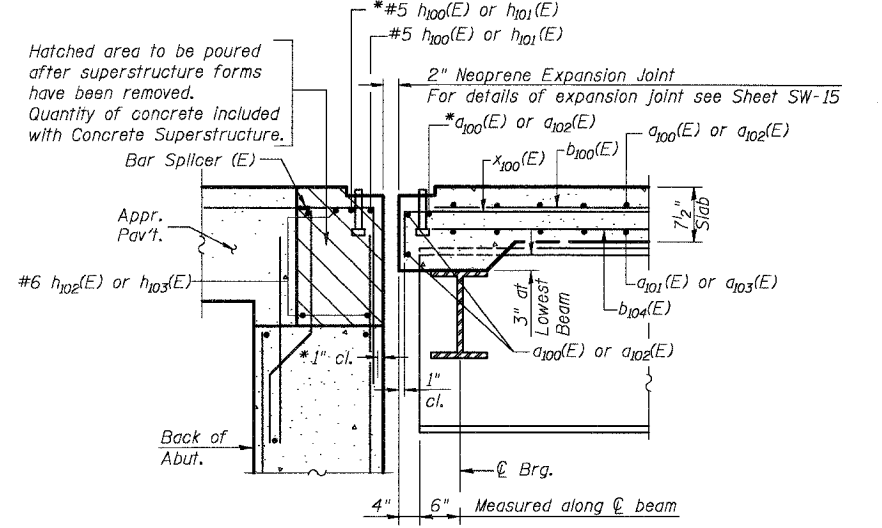
**SECTION THRU SIDEWALK**



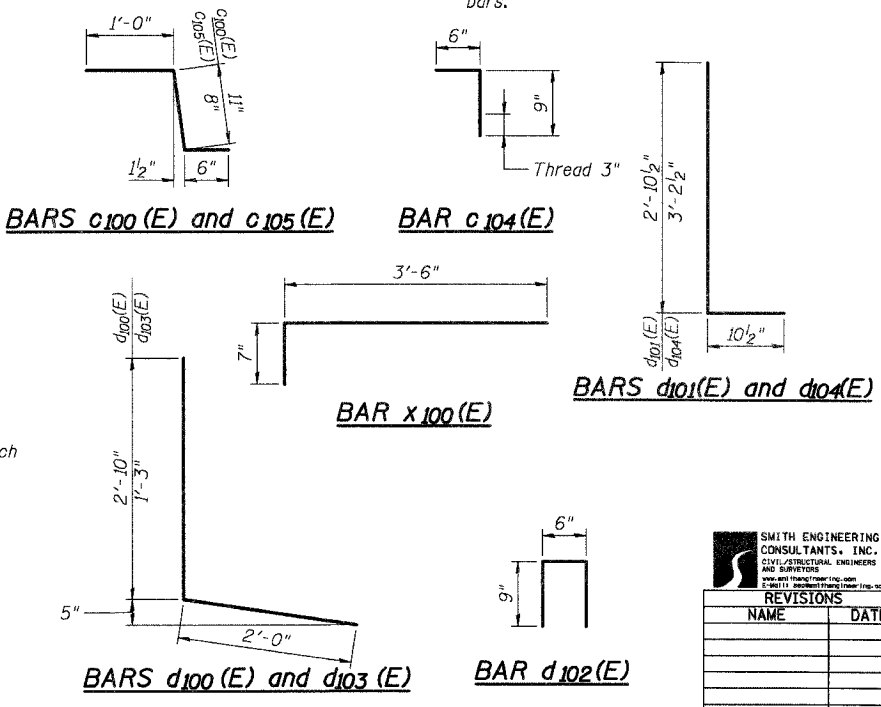
**SECTION THRU SHARED USE PATH**



**SECTION THRU MEDIAN**



**SECTION A-A**



**NOTE:**  
The Cost of Epoxy Coated Expansion Anchors is included in the cost of "Reinforcement Bars, Epoxy Coated".

**SUPERSTRUCTURE BILL OF MATERIAL**

Bar	No.	Size	Length	Shape
a100(E)	599	#5	34'-6"	—
a101(E)	450	#5	34'-6"	—
a102(E)	599	#5	38'-9"	—
a103(E)	450	#5	38'-9"	—
b100(E)	1133	#5	28'-11"	—
b101(E)	148	#6	41'-0"	—
b102(E)	74	#6	34'-6"	—
b104(E)	828	#5	26'-8"	—
b105(E)	128	#5	1'-6"	—
c100(E)	300	#5	2'-5"	—
c101(E)	300	#5	5'-8"	—
c102(E)	300	#5	13'-9"	—
c103(E)	300	#5	1'-8"	—
c104(E)	600	#5	1'-3"	—
c105(E)	300	#5	2'-2"	—
d100(E)	300	#4	4'-10"	—
d101(E)	300	#6	3'-9"	—
d102(E)	124	#4	2'-0"	—
d103(E)	300	#5	3'-3"	—
d104(E)	600	#6	4'-1"	—
d105(E)	8	#4	1'-8"	—
d106(E)	18	#6	8'-11"	—
d107(E)	6	#6	3'-10"	—
d108(E)	9	#6	2'-5"	—
d109(E)	6	#6	1'-8"	—
e100(E)	84	#4	15'-8"	—
e101(E)	48	#4	10'-6"	—
e102(E)	36	#4	18'-1"	—
e103(E)	24	#4	8'-6"	—
e104(E)	36	#4	17'-11"	—
e105(E)	12	#4	17'-2"	—
x100(E)	152	#5	4'-1"	—
Reinforcement Bars, Epoxy Coated			Pound	170,170
Concrete Superstructure			Cu. Yd.	738.2
Bridge Deck Grooving			Sq. Yd.	1,595
Protective Coat			Sq. Yd.	2,762

**NOTES:**  
Work this sheet with sheets SW-10 and SW-12 through SW-14. See sheet SW-10 for Section A-A. For Parpet Railing and Bicycle Railing, Special details see Sheet SW-17. For Bar Splicer Assembly details see Sheet SW-23.

DESIGNED	AEU
CHECKED	RGD
DRAWN	WJH
CHECKED	NRF

SMITH ENGINEERING CONSULTANTS, INC.	
CIVIL, STRUCTURAL, ELECTRICAL AND MECHANICAL ENGINEERS AND SURVEYORS	
1000 N. WASHINGTON ST., SUITE 200, CHICAGO, ILL. 60610	
TEL: (312) 467-1000 FAX: (312) 467-1001	
WWW.SMITHENGINEERING.COM	
REVISIONS	
NAME	DATE

CITY OF AURORA

SUPERSTRUCTURE DETAILS I  
ILLINOIS AVENUE  
OVER THE FOX RIVER  
SECTION NO. 03-00247-00-BR  
KANE COUNTY  
STRUCTURE NO. 045-6009

DATE 7-28-2006