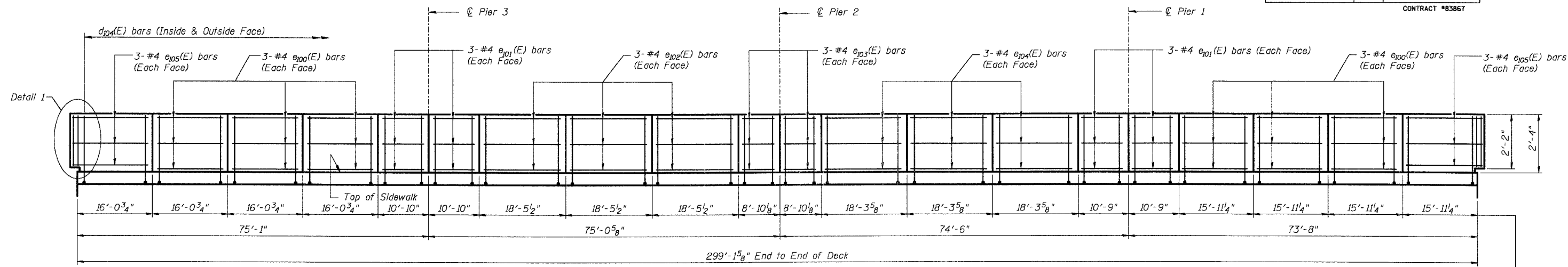


ROUTE NO.	SECTION	COUNTY	SHEET NO.	SHEET NO.
FAU 1517	03-00247-00-BR	KANE	121	54
FED. ROAD DIST. NO.	ILLINOIS	FED. AID PROJECT-		
1				

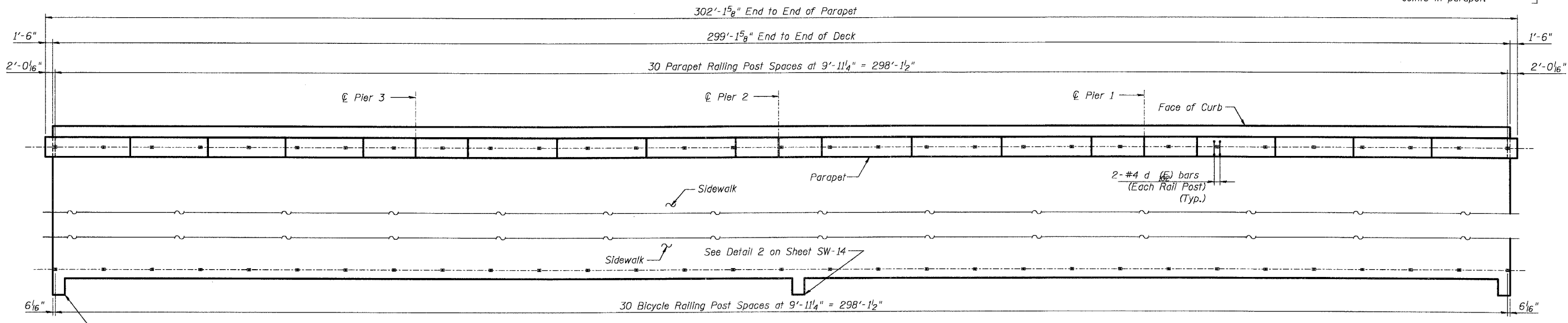
SHEET NO. SW-13
SW-30 SHEETS

CONTRACT #83867

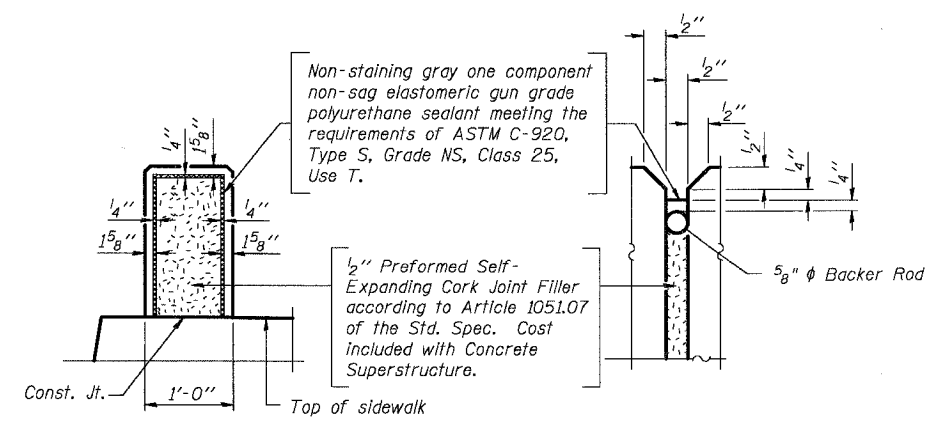


INSIDE ELEVATION OF SOUTH PARAPET

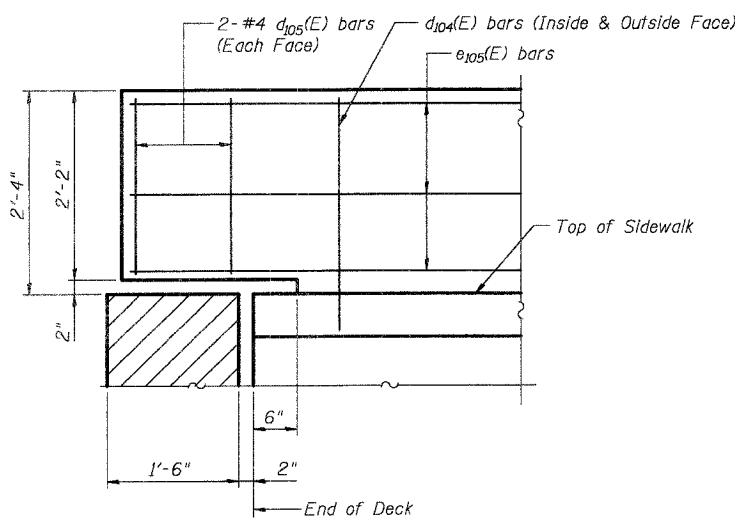
Spacing for Self-expanding
Cork Sheeted Construction
Joints in parapet.



TOP PLAN OF SHARED USE PATH



SOUTH PARAPET JOINT DETAILS



DETAIL 1

Typical at both ends of Parapet

Notes:
Work this Sheet with Sheets SW-10, SW-11 & SW-14.
For parapet railing details see Sheet SW-11.
For light pole support details see Sheet SW-14.
For Bill of Material see Sheet SW-11.

DESIGNED	AEU
CHECKED	RGD
DRAWN	WJH
CHECKED	NRF

SMITH ENGINEERING
CONSULTANTS, INC.
CIVIL, STRUCTURAL, ELECTRICAL
AND SURVEYORS

REVISIONS	
NAME	DATE

CITY OF AURORA
SUPERSTRUCTURE DETAILS III
ILLINOIS AVENUE
OVER THE FOX RIVER
SECTION NO. 03-00247-00-BR
KANE COUNTY
STRUCTURE NO. 045-6009
DATE 7-28-2006

CONTRACT NO. 03-00247-00-BR, SHEET SW-13 OF 54 SHEETS
 PROJECT NO. 03-00247-00-BR, SHEET SW-13 OF 54 SHEETS
 DRAWN BY WJH, CHECKED BY NRF, DATE 7-28-2006
 PROJECT LOCATION: ILLINOIS AVENUE OVER THE FOX RIVER, AURORA, ILLINOIS
 CONTRACT NO. 03-00247-00-BR, SHEET SW-13 OF 54 SHEETS