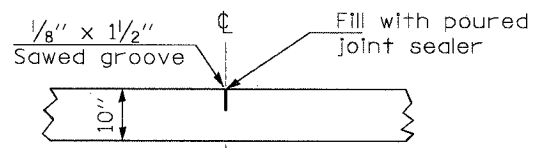
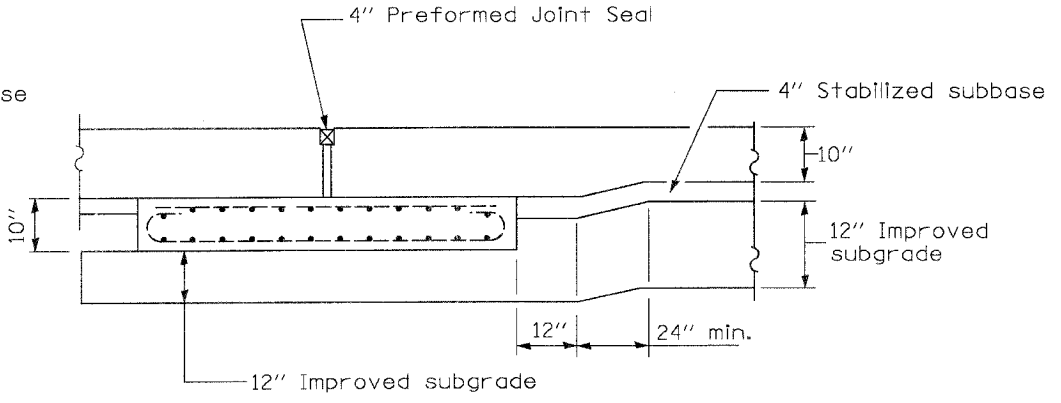
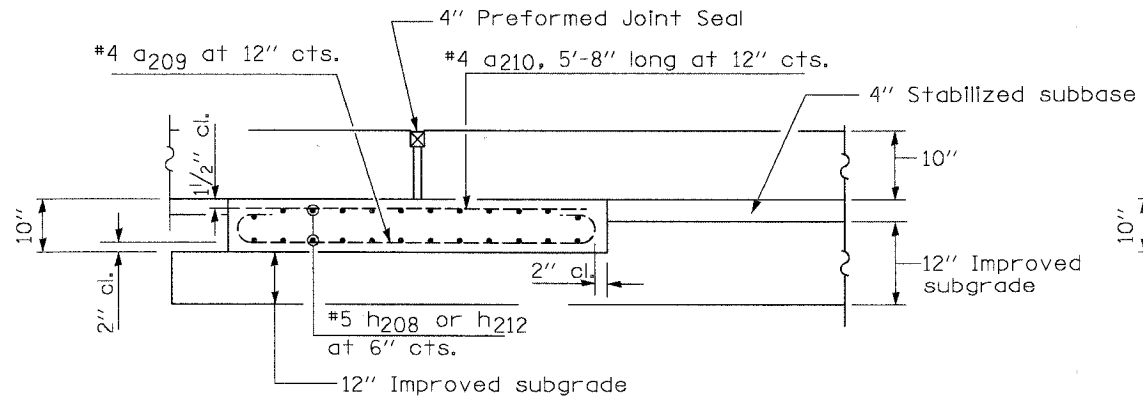


**APPROACH PAVEMENT
BILL OF MATERIAL**

Bar	No.	Size	Length	Shape
Clear (E)	111	# 6	16'-6"	U
Clear (E)	56	# 5	14'-8"	U
Clear (E)	60	# 4	6'-8"	U
Clear (E)	60	# 4	5'-8"	U
Clear (E)	111	# 6	13'-10"	U
Clear (E)	56	# 5	12'-0"	U
Clear (E)	28	# 5	25'-3"	U
Clear (E)	9	# 4	29'-3"	U
Clear (E)	28	# 5	29'-3"	U
Clear (E)	12	# 6	4'-0"	U
Clear (E)	9	# 4	25'-3"	U
Clear (E)	3	# 5	12'-0"	U
Clear (E)	3	# 5	14'-8"	U
Clear (E)	29	# 5	1'-8"	U
Clear (E)	29	# 5	1'-3"	U
Clear (E)	24	# 5	27'-3"	U
Clear (E)	24	# 5	31'-3"	U
Bridge Approach Pavement (Special)		Sq. Yd.	168	



* Saw ϕ or lane edge if poured two or more lane widths at a time.



GENERAL NOTES

Work this Sheet with Sheet ST-10.

All reinforcement bars shall be epoxy coated.

THICKNESS-"'=Thickness of Pavement.

Hooked bars are detailed on Sheet ST-10.

Reinforcement Bars, Epoxy Coated shall not be paid for separately but included in the cost of Bridge Approach Pavement (Special).

DESIGNED	AEU
CHECKED	RGD
DRAWN	WJH
CHECKED	NRF

REVISIONS	
NAME	DATE

CITY OF AURORA

APPROACH PAVEMENT DETAILS I
PEDESTRIAN TUNNEL
ILLINOIS AVENUE
OVER THE FOX RIVER
SECTION NO. 03-00247-00-BR
KANE COUNTY

DATE 7-28-2006

DESIGNER HAS ASSIGNED JUNE PROJECT CONTACT MANAGER CONTACTS
 DATE 7-28-2006