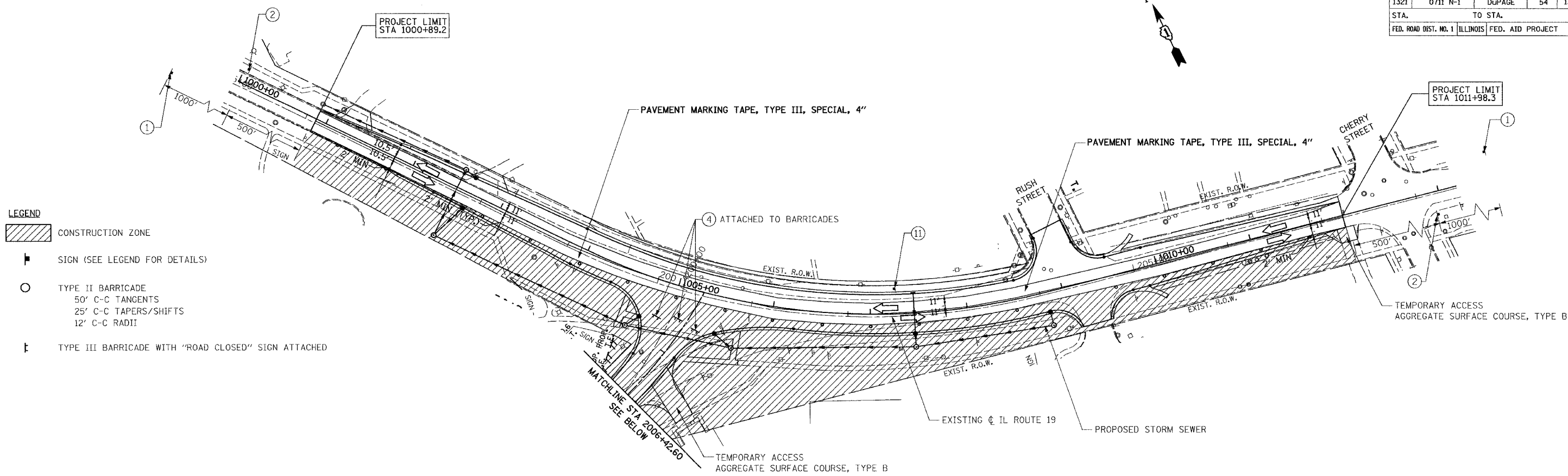
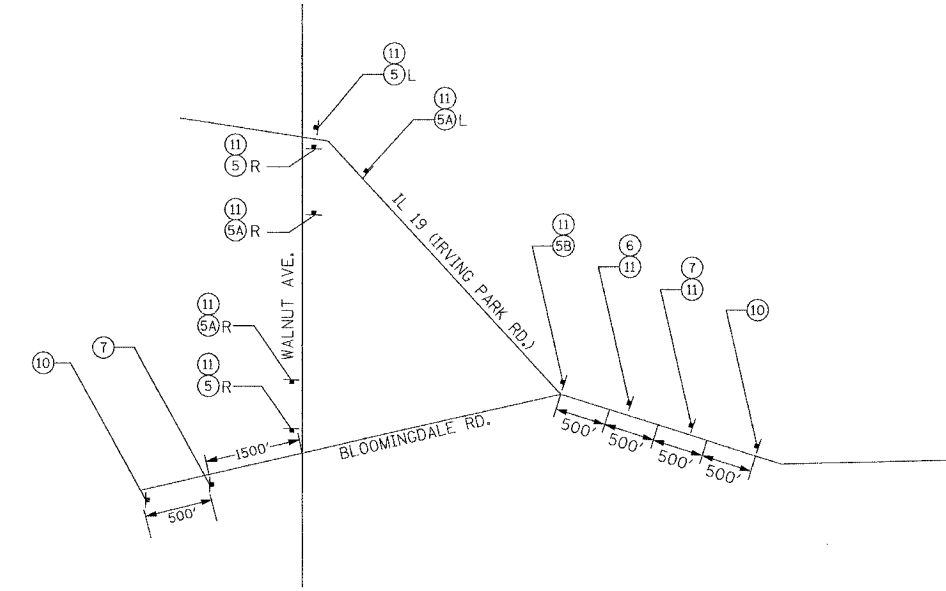
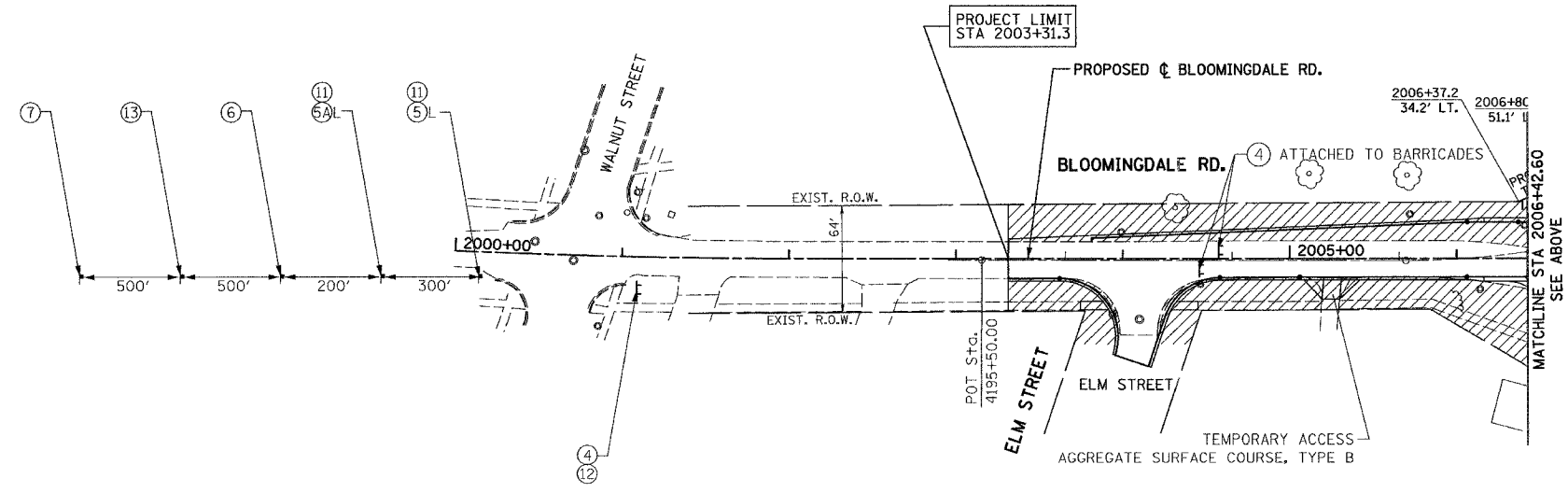


F.A.U. RTE.	SECTION	COUNTY	TOTAL SHEETS	SHEET NO.
1321	0711 N-1	DuPAGE	54	13
STA.	TO STA.			
FED. ROAD DIST. NO. 1	ILLINOIS	FED. AID PROJECT		



- LEGEND**
- CONSTRUCTION ZONE
  - SIGN (SEE LEGEND FOR DETAILS)
  - TYPE II BARRICADE  
50' C-C TANGENTS  
25' C-C TAPERS/SHIFTS  
12' C-C RADII
  - TYPE III BARRICADE WITH "ROAD CLOSED" SIGN ATTACHED



REVISIONS	
NAME	DATE

ILLINOIS DEPARTMENT OF TRANSPORTATION  
F.A.U. ROUTE 1321 (IL. ROUTE 19)

**MAINTENANCE OF TRAFFIC**

STAGE 1

SCALE: 1"=50'  
DATE 8/31/06

DRAWN BY ES  
CHECKED BY JJP

PLOT DATE = 8/30/06  
 FILE NAME = I:\PROJECTS\Bloomington\Proposed\Plans\Rev\Drawn\MDT\_Concept\Plan\MDT\_Stage\_1.dgn  
 PLOT SCALE = AS CALLED  
 USER NAME = USER