

STATE OF ILLINOIS
DEPARTMENT OF TRANSPORTATION
DIVISION OF HIGHWAYS

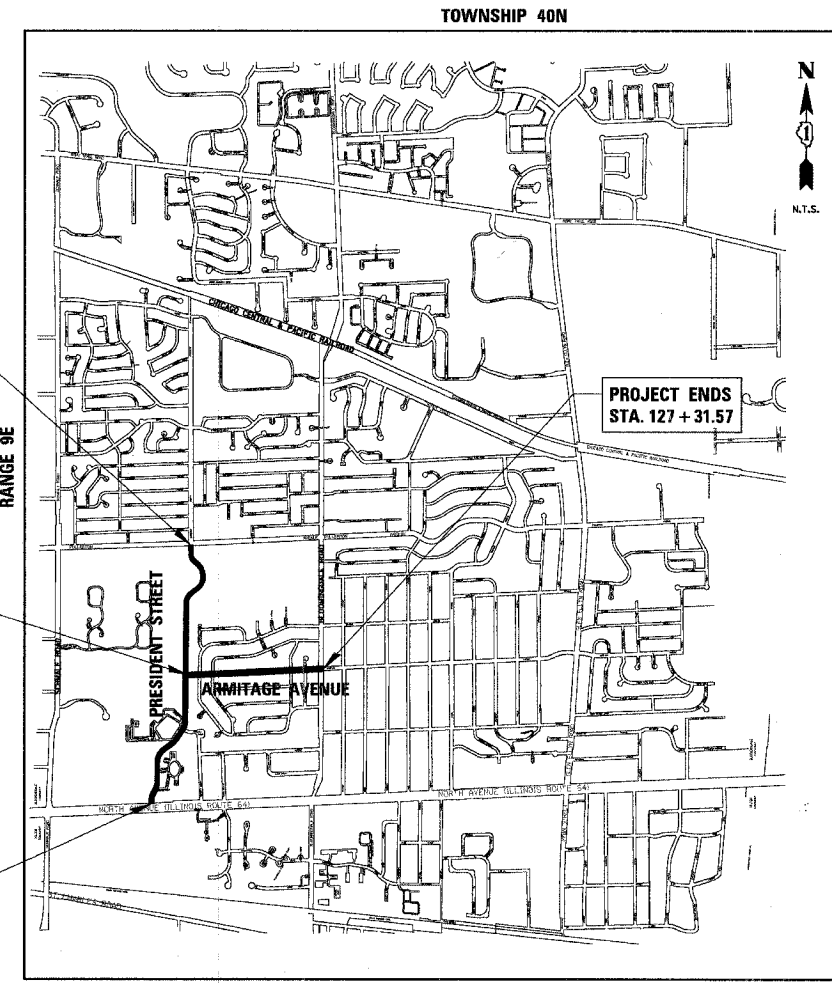
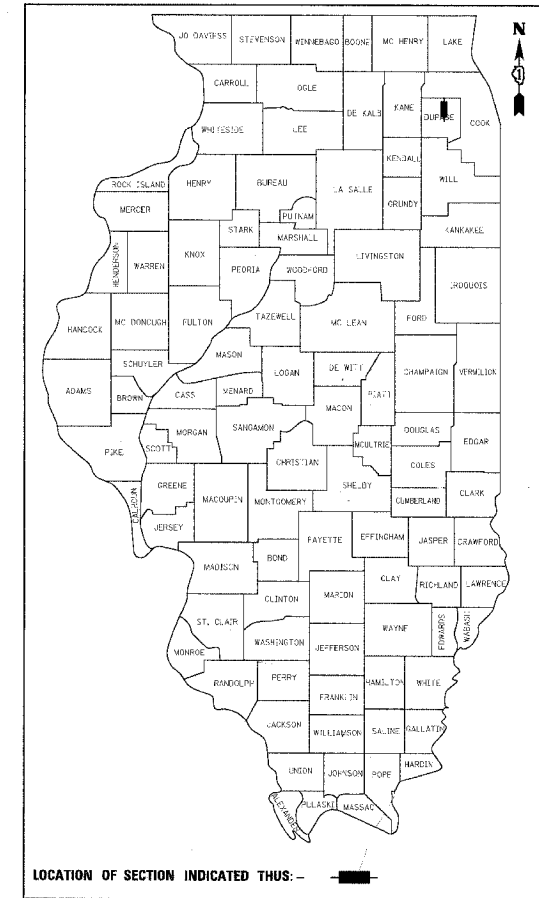
PLANS FOR PROPOSED
FEDERAL AID HIGHWAY

PRESIDENT STREET (FAU 2424)
FROM NORTH AVENUE (FAU ROUTE 307) TO FULLERTON AVENUE (FAU 1379)
ARMITAGE AVENUE (FAU 2425)
FROM PRESIDENT STREET (FAU 2424) TO BLOOMINGDALE ROAD (FAU ROUTE 364)
RESURFACING
L.A. SECTION No. 06-00054-00-RS
PROJECT No. M-8003 (613)
VILLAGE OF GLENDALE HEIGHTS
DUPAGE COUNTY
C-91-287-06

F.A.U. R.T.E.	SECTION	COUNTY	TOTAL SHEETS	SHEET NO.
--	06-00054-00-RS	DUPAGE	18	1
FED. ROAD DIST. NO. 1 ILLINOIS		FED. AID PROJECT		

CONTRACT NO. 83877

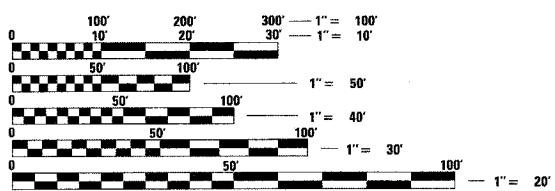
DESCRIPTION	INDEX OF SHEETS	SHEET NO.
TITLE SHEET		1
SUMMARY OF QUANTITIES AND STORM SEWER SCHEDULE		2
GENERAL NOTES & IDOT STANDARDS		3
TYPICAL SECTIONS		4
PRESIDENT STREET EXISTING CONDITIONS AND REMOVAL PLAN		5-7
ARMITAGE AVENUE EXISTING CONDITIONS AND REMOVAL PLAN		8
PRESIDENT STREET PROPOSED PLAN		9-11
ARMITAGE AVENUE PROPOSED PLAN		12
CONSTRUCTION DETAILS		13
COMB. CURB AND GUTTER REMOVAL AND REPLACEMENT (SPEC.)		14
PAVEMENT PATCHING FOR BITUMINOUS SURFACED PAVEMENT		15
BUTT JOINT AND BITUMINOUS TAPER DETAILS		16
DISTRICT ONE TYPICAL PAVEMENT MARKINGS		17
TRAFFIC CONTROL AND PROTECTION FOR SIDE ROADS, INTERSECTIONS, AND DRIVEWAYS		18



TRAFFIC DATA (PRESIDENT STREET)
ADT (YEAR) = 5000 (2005)
SPEED LIMIT = 25 MPH

TRAFFIC DATA (ARMITAGE AVENUE)
ADT (YEAR) = 2131 (2005)
SPEED LIMIT = 25 MPH

DESIGN DESIGNATION: LOCAL



FULL SIZE PLANS HAVE BEEN PREPARED USING STANDARD ENGINEERING SCALES. REDUCED SIZED PLANS WILL NOT CONFORM TO STANDARD SCALES. IN MAKING MEASUREMENTS ON REDUCED PLANS, THE ABOVE SCALES MAY BE USED.

J.U.L.I.E.
JOINT UTILITY LOCATION INFORMATION FOR EXCAVATION
1-800-892-0123

CONTRACT NO. 83877

CB CHRISTOPHER B. BURKE ENGINEERING LTD.
9575 West Higgins Road, Suite 600
Rosemont, Illinois 60018 (847) 823-0500

GROSS LENGTH OF PROJECT = 8539 ft. (1.62 mi.)
NET LENGTH OF PROJECT = 8539 ft. (1.62 mi.)

STATE OF ILLINOIS
DEPARTMENT OF TRANSPORTATION
DIVISION OF HIGHWAYS

APPROVED: [Signature] 2006
[Signature]
VILLAGE ADMINISTRATOR
VILLAGE OF GLENDALE HEIGHTS

PASSED: [Signature] November 6 2006
[Signature] CHET CHRISTOPHER
DISTRICT ENGINEER OF LOCAL ROADS AND STREETS

RELEASING FOR BID BASED ON LIMITED REVIEW: Nov. 6 2006
Bione O'Keefe
DEPUTY DIRECTOR OF HIGHWAYS
REGION ONE ENGINEER

LEE M. FELL
062-053708
LICENSED PROFESSIONAL ENGINEER
OF ILLINOIS

[Signature]
ENGINEER

9/25/06
DATE

LEE M. FELL
ILLINOIS REGISTRATION No. 062-053708
EXPIRATION DATE: 11/30/2007

IDOT FEDERAL-AID DESIGN ENGINEER: KEVIN STALLWORTH 847-705-4169