

F.A.U. RTE.	SECTION	COUNTY	TOTAL SHEETS	SHEET NO.
0177	01-00168-06-BT	LAKE	38	6
ALIGNMENT, TIES & BENCHMARKS				
FED. ROAD DIST. NO. 7 ILLINOIS FED. AID PROJECT HD-800316950				

**CURVE DATA - PERMANENT BIKE PATH BASE LINE**

(RIGHT EDGE OF PAVEMENT)

PI #1	CURVE (P-1)	CURVE (P-2)	CURVE (P-3)	PI #5	PI #6	PI #7
STA. 100+59.13 N = 2088298.711 E = 1040887.276	$\Delta = 47^\circ-40'-12''$ D = $9^\circ-32'-57''$ R = 600.00' T = 265.07' L = 499.20' E = 55.94'	$\Delta = 63^\circ-50'-53''$ D = $45^\circ-50'-12''$ R = 125.00' T = 77.88' L = 139.30' E = 22.28'	$\Delta = 27^\circ-06'-56''$ D = $28^\circ-38'-52''$ R = 200.00' T = 48.23' L = 94.65' E = 5.73'	STA. 112+20.06 N = 2089176.204 E = 1041366.924	STA. 112+58.20 N = 2089213.551 E = 1041359.208	STA. 112+71.76 N = 2089227.028 E = 1041357.671
	P.C. = 100+63.83 N = 2088302.895 E = 1040889.425 P.I. = 103+28.90 N = 2088538.688 E = 1041010.516 P.T. = 105+63.03 N = 2088607.952 E = 1041266.375	P.C. = 106+08.84 N = 2088619.924 E = 1041310.597 P.I. = 106+86.72 N = 2088640.274 E = 1041385.770 P.T. = 107+48.14 N = 2088716.720 E = 1041400.636	P.C. = 109+08.60 N = 2088874.234 E = 1041431.266 P.I. = 109+56.83 N = 2088921.576 E = 1041440.472 P.T. = 110+03.25 N = 2088967.911 E = 1041427.088			

**BENCHMARKS**

BM #1 LCBM DESIGNATION 2-35A  
STEEL RAILROAD SPIKE IN THE EAST FACE  
OF A WOOD UTILITY POLE LOCATED IN THE NORTHWESTERLY  
INTERSECTION OF MONAVILLE ROAD AND FAIRFIELD ROAD  
ELEVATION = 799.09

**CONTROL POINTS**

MONUMENT IN ROADWAY  
STA. 102+90.46, 23.79' RT  
NORTHING = 2088462.508  
EASTING = 1041043.793  
ELEVATION = 769.88

MONUMENT IN ROADWAY  
STA. 107+92.24, 45.27' RT  
NORTHING = 2088751.365  
EASTING = 1041453.493  
ELEVATION = 795.00

CF #1 - IRON ROD  
STA. 102+90.46, 23.79' RT  
NORTHING = 2088462.508  
EASTING = 1041043.793  
ELEVATION = 769.88

CF #2 - IRON ROD  
STA. 105+07.03, 23.47' LT  
NORTHING = 2088612.800  
EASTING = 1041204.861  
ELEVATION = 784.54

CF #3 - IRON ROD  
STA. 106+35.23, 33.57' LT  
NORTHING = 2088659.290  
EASTING = 1041319.786  
ELEVATION = 790.77

CF #4 - IRON ROD  
STA. 107+92.24, 45.27' RT  
NORTHING = 2088751.365  
EASTING = 1041453.493  
ELEVATION = 795.00

CF #5 - IRON ROD  
STA. 109+22.61, 15.75' RT  
NORTHING = 2088861.54  
EASTING = 1041449.091  
ELEVATION = 797.57

STATIONING BASED ON PROPOSED  
BIKE PATH ALIGNMENT

BEGINNING OF PERMANENT PATH  
STATION = 100+00.00  
NORTHING = 2088243.106  
EASTING = 1040861.114

BEGINNING OF PERMANENT PATH  
STATION = 209+86.52  
NORTHING = 2088220.338  
EASTING = 1040876.138

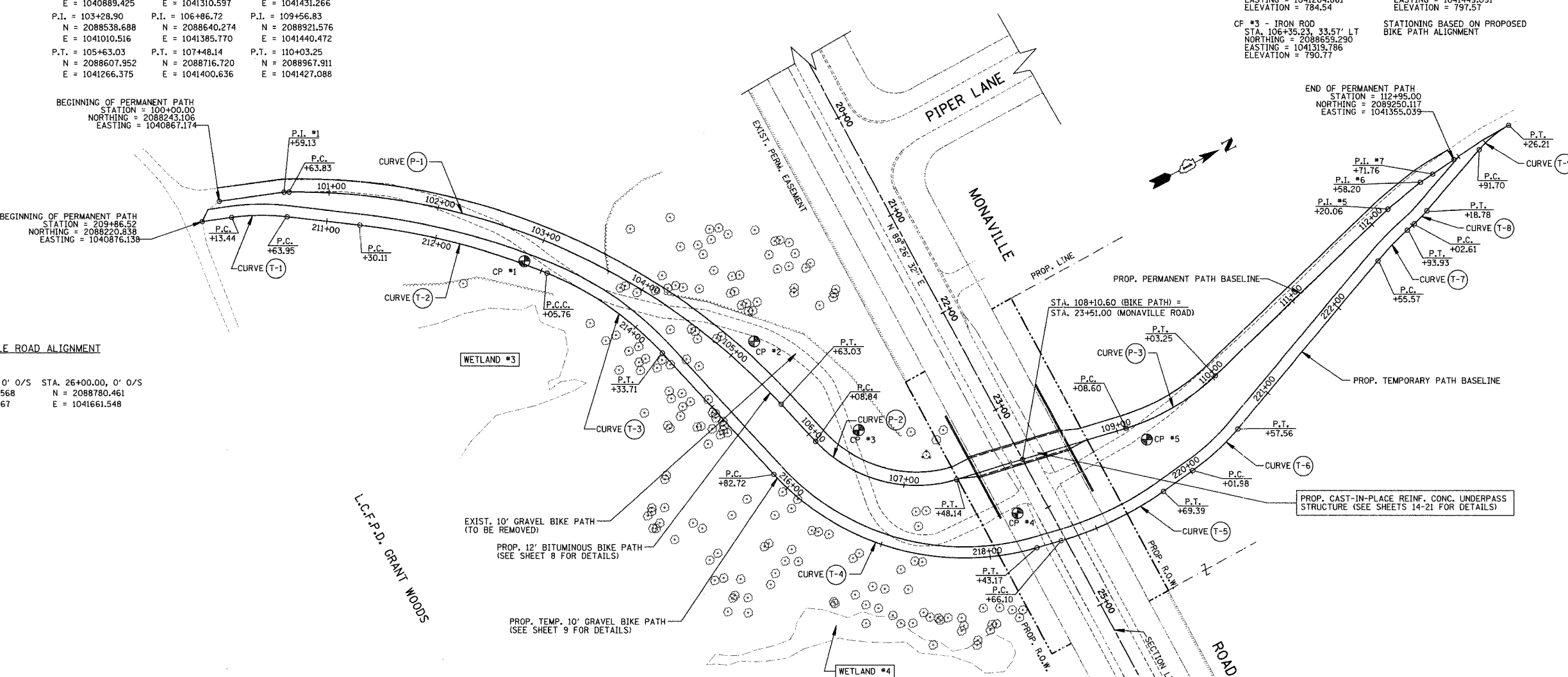
**MONAVILLE ROAD ALIGNMENT**

STA. 22+00.00, 0' O/S STA. 26+00.00, 0' O/S  
N = 2088766.568 N = 2088780.461  
E = 1041261.567 E = 1041661.548

**CURVE DATA - TEMPORARY BIKE PATH BASE LINE**

(RIGHT EDGE OF PAVEMENT)

CURVE (T-1)	CURVE (T-2)	CURVE (T-3)	CURVE (T-4)	CURVE (T-5)	CURVE (T-6)	CURVE (T-7)	CURVE (T-8)	CURVE (T-9)
$\Delta = 14^\circ-28'-20''$ D = $28^\circ-38'-52''$ R = 200.00' T = 25.39' L = 50.62' E = 1.61'	$\Delta = 15^\circ-28'-59''$ D = $8^\circ-48'-53''$ R = 650.00' T = 88.36' L = 175.65' E = 5.98'	$\Delta = 25^\circ-16'-45''$ D = $19^\circ-45'-26''$ R = 290.00' T = 65.03' L = 127.95' E = 7.20'	$\Delta = 63^\circ-30'-00''$ D = $19^\circ-28'-52''$ R = 235.00' T = 145.42' L = 260.45' E = 41.36'	$\Delta = 19^\circ-05'-26''$ D = $18^\circ-28'-57''$ R = 310.00' T = 52.13' L = 103.29' E = 4.35'	$\Delta = 14^\circ-48'-49''$ D = $26^\circ-38'-57''$ R = 215.00' T = 27.95' L = 55.59' E = 1.81'	$\Delta = 7^\circ-34'-40''$ D = $19^\circ-45'-26''$ R = 290.00' T = 19.21' L = 38.35' E = 0.64'	$\Delta = 6^\circ-51'-53''$ D = $42^\circ-26'-29''$ R = 135.00' T = 8.10' L = 16.17' E = 0.24'	$\Delta = 19^\circ-46'-27''$ D = $57^\circ-17'-45''$ R = 100.00' T = 17.43' L = 34.51' E = 1.51'
P.C. = 210+13.44 N = 2088246.151 E = 1040885.289 P.I. = 210+38.33 N = 2088270.032 E = 1040893.922 P.T. = 210+63.95 N = 2088290.998 E = 1040908.250	P.C. = 211+30.11 N = 2088345.621 E = 1040945.577 P.I. = 212+18.48 N = 2088418.577 E = 1040995.433 P.C.C. = 213+05.76 N = 2088475.576 E = 1041062.955	P.C.C. = 213+05.76 N = 2088475.576 E = 1041062.955 P.I. = 213+70.80 N = 2088517.525 E = 104112.649 P.T. = 214+33.71 N = 2088752.327 E = 1041175.498	P.C. = 215+82.72 N = 2088572.530 E = 1041319.506 P.I. = 217+28.15 N = 2088609.900 E = 1041460.045 P.T. = 218+43.17 N = 2088752.348 E = 1041489.309	P.C. = 218+66.10 N = 2088774.811 E = 1041493.924 P.I. = 219+18.23 N = 2088825.873 E = 1041504.414 P.T. = 219+69.39 N = 2088877.558 E = 1041497.627	P.C. = 220+01.98 N = 2088909.863 E = 1041493.384 P.I. = 220+29.93 N = 2088937.574 E = 1041396.737 P.T. = 220+57.56 N = 2089182.984 E = 1041479.142	P.C. = 222+55.57 N = 2089146.639 E = 1041404.023 P.I. = 222+74.78 N = 2089164.409 E = 1041387.596 P.T. = 222+93.93 N = 2089182.984 E = 1041391.858	P.C. = 223+02.61 N = 2089191.380 E = 1041389.653 P.I. = 223+10.70 N = 2089199.211 E = 1041387.596 P.T. = 223+18.78 N = 2089206.740 E = 1041384.618	P.C. = 223+91.70 N = 2089274.546 E = 1041351.385 P.I. = 224+09.13 N = 2089290.753 E = 1041351.385 P.T. = 224+26.21 N = 2089308.174 E = 1041350.835



END OF PERMANENT PATH  
STATION = 112+95.00  
NORTHING = 2089250.117  
EASTING = 1041355.039

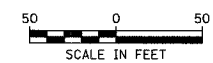
STA. 108+10.60 (BIKE PATH) =  
STA. 23+51.00 (MONAVILLE ROAD)

PROP. CAST-IN-PLACE REINF. CONC. UNDERPASS  
STRUCTURE (SEE SHEETS 14-21 FOR DETAILS)

L.C.F.P.D. GRANT WOODS

ILLINOIS DEPARTMENT OF TRANSPORTATION

**MONAVILLE ROAD BIKE PATH UNDERPASS  
ALIGNMENT, TIES & BENCHMARKS**



DESIGNED BY: D.J.K.  
CHECKED BY: J.R.V.  
DATE: 10/18/06

REVISIONS	
NAME	DATE