

F.A.U. RTE.	SECTION	COUNTY	TOTAL SHEETS	SHEET NO.
0177	01-00168-06-BT	LAKE	38	10
MONAVILLE ROAD PLAN & PROFILE				
FED. ROAD DIST. NO. 7 ILLINOIS FED. AID PROJECT HD-8003695				

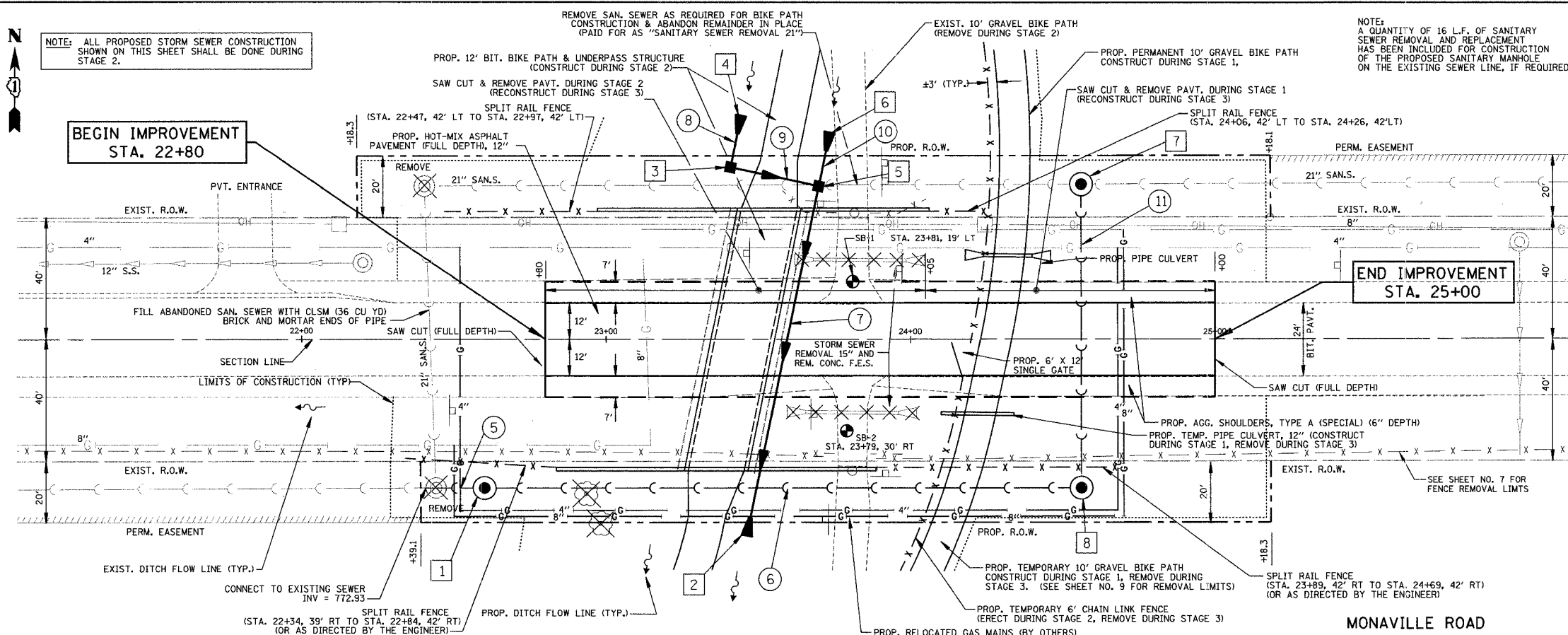
STRUCTURES

1 STA. 22+44, 48.6' RT. M.H., SANITARY, 5'-DIA., W/ TYPE 1 FR. & CL. TOP FR. = 796.25 INV. (E&W) = 772.99	2 STA. 23+46, 64.4' RT. P.R.C. FLARED END SECTION, 15" F.L. = 775.10	3 STA. 23+40.7, 56.2' LT. FLUSH INLET BOX FOR MEDIAN STANDARD 542546 TOP FR. = 778.75 INV. = 777.23
4 STA. 23+44.1, 73.2' LT. P.R.C. FLARED END SECTION, 12" F.L. = 777.31	5 STA. 23+69.6, 50' LT. FLUSH INLET BOX FOR MEDIAN STANDARD 542546 TOP FR. = 779.00 INV. = 777.03	6 STA. 23+73.2, 67.7' LT. P.R.C. FLARED END SECTION, 12" F.L. = 777.21

NOTE: STATIONING BASED OFF OF MONAVILLE ROAD

PIPES

5 17' - 21" SANITARY SEWER @ 0.375%	8 10' - 12" S.S., CL. A, T-1 @ 0.50%
6 191' - 21" SANITARY SEWER @ 0.375% T.B.F. = 6 CU YD	9 27' - 12" S.S., CL. A, T-1 @ 0.75% T.B.F. = 1 CU YD
7 110' - 15" S.S., CL.A, T-4 @ 1.75%	10 10' - 12" S.S., CL. A, T-1 @ 1.75%
	11 95' - 21" SANITARY SEWER @ 0.375% T.B.F. = 65 CU YD

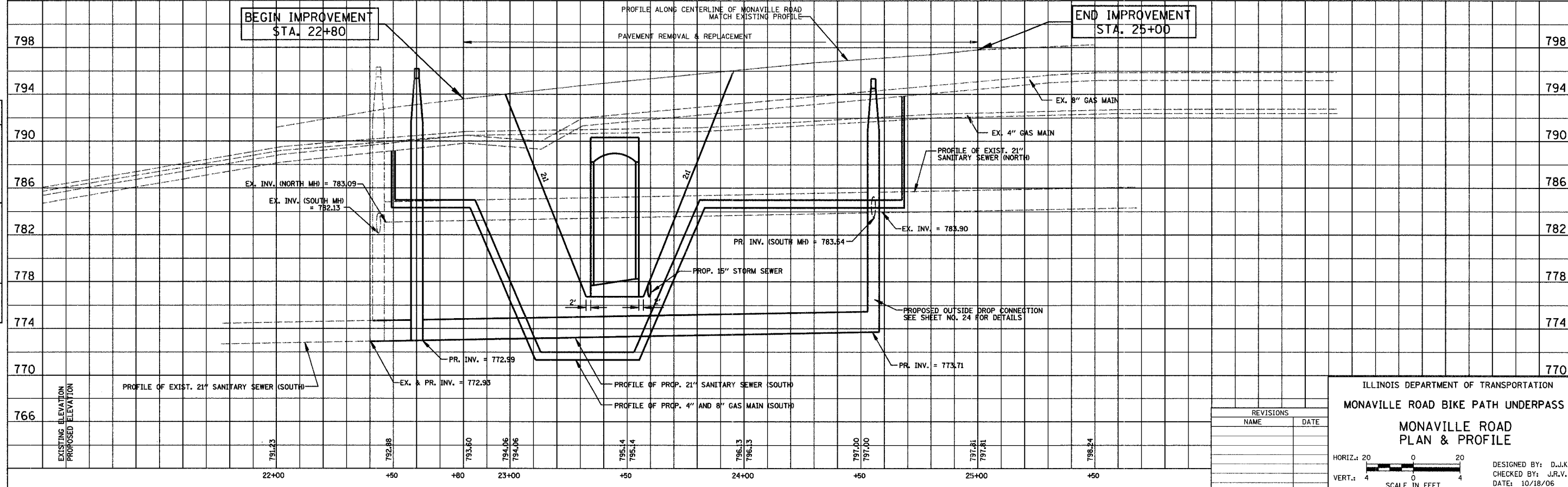


NOTE: ALL PROPOSED STORM SEWER CONSTRUCTION SHOWN ON THIS SHEET SHALL BE DONE DURING STAGE 2.

NOTE: A QUANTITY OF 16 L.F. OF SANITARY SEWER REMOVAL AND REPLACEMENT HAS BEEN INCLUDED FOR CONSTRUCTION OF THE PROPOSED SANITARY MANHOLE ON THE EXISTING SEWER LINE, IF REQUIRED.

BEGIN IMPROVEMENT STA. 22+80

END IMPROVEMENT STA. 25+00



ILLINOIS DEPARTMENT OF TRANSPORTATION

MONAVILLE ROAD BIKE PATH UNDERPASS

MONAVILLE ROAD PLAN & PROFILE



DESIGNED BY: D.J.K.
CHECKED BY: J.R.V.
DATE: 10/18/06

REVISIONS	
NAME	DATE