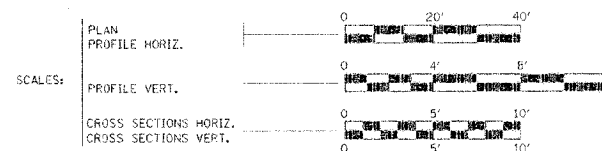


SECTION NO.	SECTION	COUNTY	SHEET NO.	TOTAL SHEETS
FAS 460		FULTON	13	1
FED. AID EST. NO. 7		F. L. B. NO.	PROJECT NO.	
			*05-00131-00-BR	

STATE OF ILLINOIS
DEPARTMENT OF TRANSPORTATION
**PLANS FOR PROPOSED
BRIDGE REPLACEMENT**

INDEX OF SHEETS

SHEET NO.	DESCRIPTION
1	COVER SHEET
2	SUMMARY & SCHEDULE OF QUANTITIES AND TYPICAL CROSS SECTIONS
3	PLAN & PROFILE
4	TEMPORARY EROSION CONTROL PLAN
5-6	CROSS SECTIONS
7-13	BRIDGE PLANS



FULTON COUNTY
SECTION 05-00131-00-BR
BRS 0460(104)
FAS 460

COUNTY HIGHWAY 14
BRIDGE REPLACEMENT
AND REHABILITATION PROGRAM
C-94-137-06

ILLINOIS DEPT. OF TRANSPORTATION STANDARD DRAWINGS

STANDARD NO.	DESCRIPTION
000001-04	STANDARD SYMBOLS, ABBREVIATIONS, AND PATTERNS
280001-03	TEMPORARY EROSION CONTROL SYSTEMS
515001-02	NAME PLATE FOR BRIDGES
630001-06	STEEL PLATEBEAM GUARDRAIL
630301-04	SHOULDER WIDENING FOR TYPE 1 SPECIAL GUARDRAIL TERMINALS
631026-03	TRAFFIC BARRIER TERMINAL TYPE 5 & 5A
701006-02	OFF ROAD OPERATIONS, 2L, 2W, 15' TO 24' FROM PAVEMENT EDGE
701301-02	LANE CLOSURE, 2L, 2W, SHORT TIME OPERATIONS
702001-06	TRAFFIC CONTROL DEVICES
BLR 21-6	TYPICAL APPLICATION OF TRAFFIC CONTROL DEVICES FOR CONSTRUCTION OF RURAL LOCAL HIGHWAYS
BLR 23-1	TRAFFIC BARRIER TERMINAL TYPE 1

CAT #033079-00

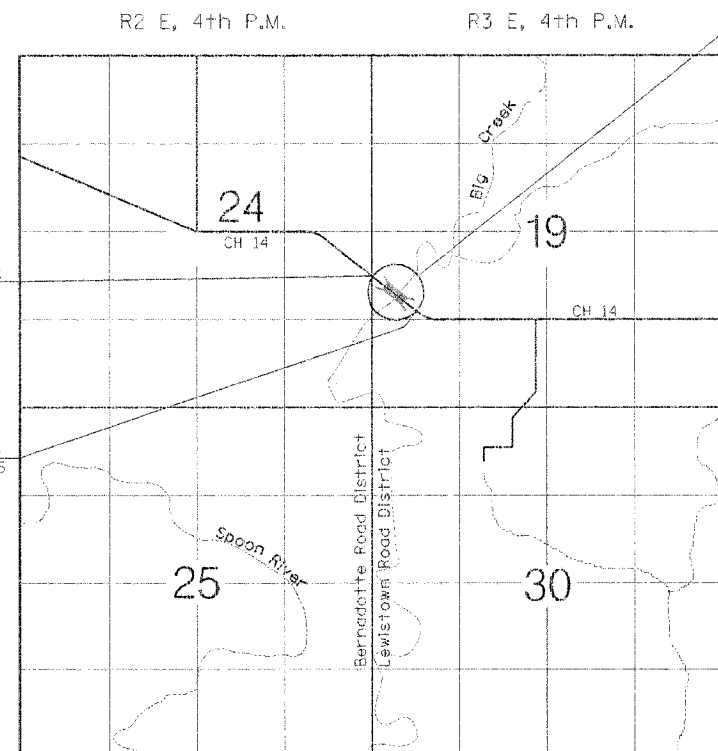
COMMITMENTS-NONE



Kelly Jo Hoffmann 11-6-06
KELLY JO HOFFMANN
Illinois Licensed Professional Engineer Number 58725
License Expires 11/30/07

CONTRACT #89438

FOR JOINT UTILITY INFORMATION
CALL TOLL FREE 1-800-892-0123

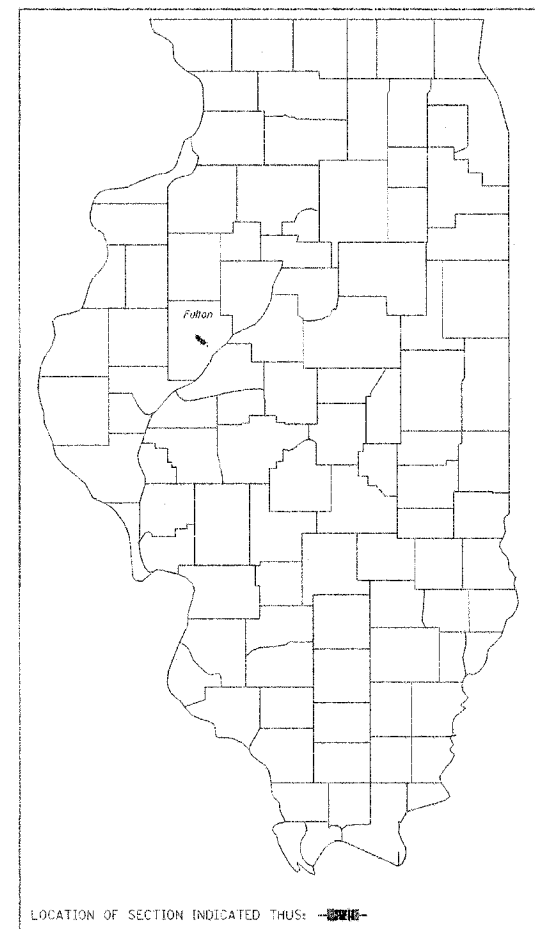


LOCATION MAP

ADT = 350 (CURRENT), < 350 (DESIGN)
FUNCTIONAL CLASS = MAJOR COLLECTOR

NET LENGTH OF SECTION = 315.00 FEET = 0.060 MILES

PROPOSED STRUCTURE STA. 9+94
THREE-SPAN PRECAST PRESTRESSED
CONC. BRIDGE 164.5' BK. TO BK
ABUTMENTS, NO SKEW, 24'-0"
OUT TO OUT OF DECK.
OLD STRUCTURE NO. 029-3024
NEW STRUCTURE NO. 029-3224



APPROVED 11-8 2006
William Kuhn
WILLIAM KUHN, PE FULTON COUNTY ENGINEER

PASSED Nov 16 2006
John Laballe
DISTRICT FOUR ENGINEER OF
LOCAL ROADS & STREETS

Releasing For
Bid Based on
Limited Review Nov 17, 2006
John E. Brown
DEPUTY DIRECTOR OF HIGHWAYS,
REGION THREE ENGINEER
STATE OF ILLINOIS
DEPARTMENT OF TRANSPORTATION

FRAUENHOFER

Frauenhoffer and Associates, P.C. Consulting Engineers
3002 Crossing Court Champaign, IL 61822 217-351-6268