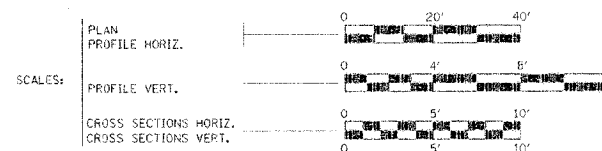


SECTION NO.	SECTION	COUNTY	SHEET NO.	TOTAL SHEETS
FAS 460		FULTON	13	1
FED. AID EST. NO. 7		F. L. B. NO.	PROJECT NO.	
			*05-00131-00-BR	

STATE OF ILLINOIS
DEPARTMENT OF TRANSPORTATION
**PLANS FOR PROPOSED
BRIDGE REPLACEMENT**

INDEX OF SHEETS

SHEET NO.	DESCRIPTION
1	COVER SHEET
2	SUMMARY & SCHEDULE OF QUANTITIES AND TYPICAL CROSS SECTIONS
3	PLAN & PROFILE
4	TEMPORARY EROSION CONTROL PLAN
5-6	CROSS SECTIONS
7-13	BRIDGE PLANS

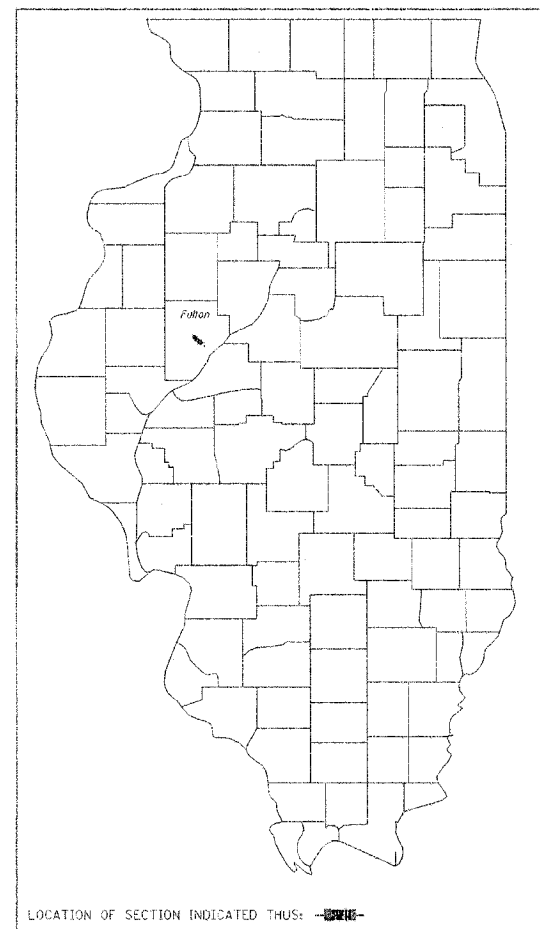


FULTON COUNTY
SECTION 05-00131-00-BR
BRS 0460(104)
FAS 460

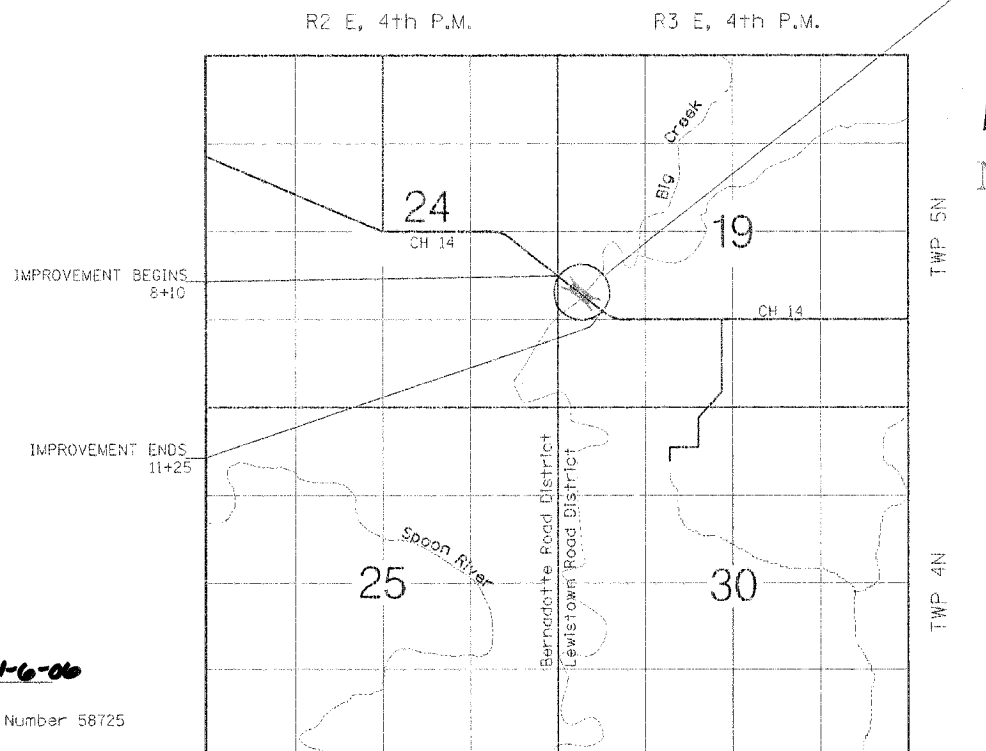
COUNTY HIGHWAY 14
BRIDGE REPLACEMENT
AND REHABILITATION PROGRAM
C-94-137-06

ILLINOIS DEPT. OF TRANSPORTATION STANDARD DRAWINGS

STANDARD NO.	DESCRIPTION
000001-04	STANDARD SYMBOLS, ABBREVIATIONS, AND PATTERNS
280001-03	TEMPORARY EROSION CONTROL SYSTEMS
515001-02	NAME PLATE FOR BRIDGES
630001-06 Revised 1-8-07	STEEL PLATEBEAM GUARDRAIL
630301-04	SHOULDER WIDENING FOR TYPE 1 SPECIAL GUARDRAIL TERMINALS
631026-03	TRAFFIC BARRIER TERMINAL TYPE 5 & 5A
701006-02	OFF ROAD OPERATIONS, 2L, 2W, 15' TO 24' FROM PAVEMENT EDGE
701301-02	LANE CLOSURE, 2L, 2W, SHORT TIME OPERATIONS
702001-06	TRAFFIC CONTROL DEVICES
BLR 21-6	TYPICAL APPLICATION OF TRAFFIC CONTROL DEVICES FOR CONSTRUCTION OF RURAL LOCAL HIGHWAYS
BLR 23-1	TRAFFIC BARRIER TERMINAL TYPE 1



PROPOSED STRUCTURE STA. 9+94
THREE-SPAN PRECAST PRESTRESSED
CONC. BRIDGE 164.5' BK. TO BK
ABUTMENTS, NO SKEW, 24'-0"
OUT TO OUT OF DECK.
OLD STRUCTURE NO. 029-3024
NEW STRUCTURE NO. 029-3224



LOCATION MAP

ADT = 350 (CURRENT), < 350 (DESIGN)
FUNCTIONAL CLASS = MAJOR COLLECTOR

NET LENGTH OF SECTION = 315.00 FEET = 0.060 MILES

CAT #033079-00

COMMITMENTS-NONE



Kelly Jo Hoffmann 11-6-06
KELLY JO HOFFMANN
Illinois Licensed Professional Engineer Number 58725
License Expires 11/30/07

CONTRACT #89438

FOR JOINT UTILITY INFORMATION
CALL TOLL FREE 1-800-892-0123

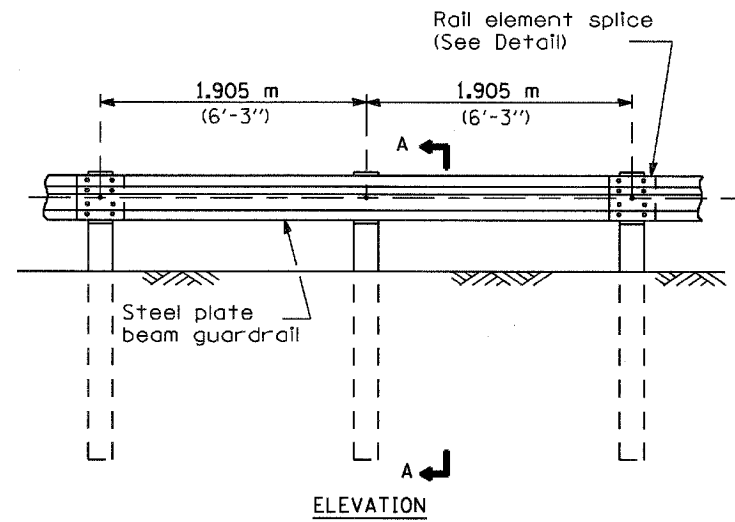
APPROVED 11-8 2006
William Kuhn
WILLIAM KUHN, PE FULTON COUNTY ENGINEER

PASSED Nov 16 2006
John Laballe
DISTRICT FOUR ENGINEER OF
LOCAL ROADS & STREETS

Releasing For
Bid Based on
Limited Review Nov 17, 2006
John E. Brown
DEPUTY DIRECTOR OF HIGHWAYS,
REGION THREE ENGINEER
STATE OF ILLINOIS
DEPARTMENT OF TRANSPORTATION

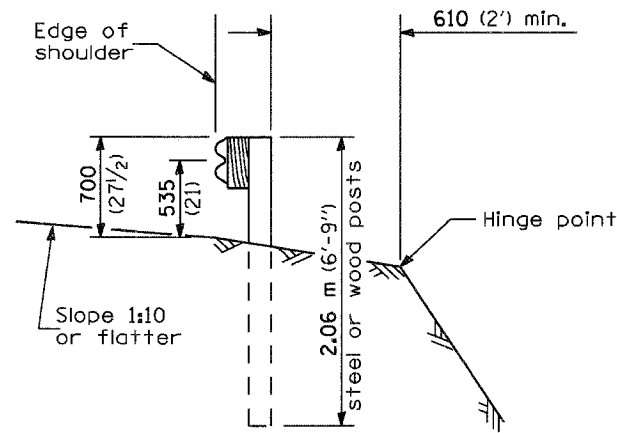
FRAUENHOFER

Frauenhoffer and Associates, P.C. Consulting Engineers
3002 Crossing Court Champaign, IL 61822 217-351-6268

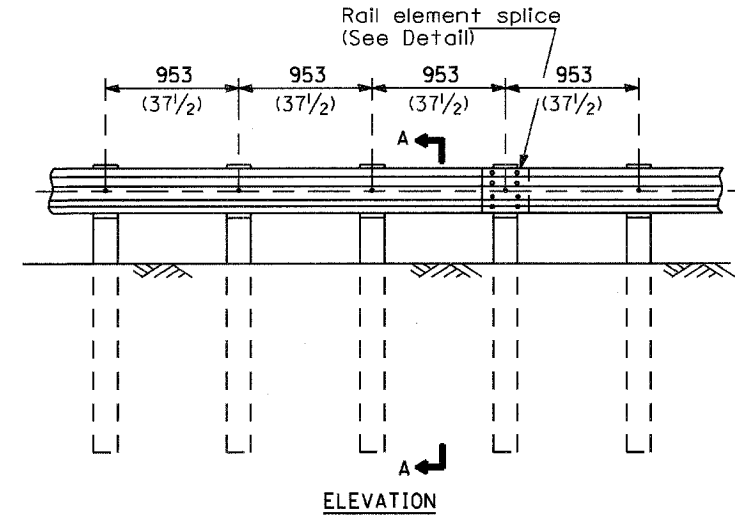


TYPE A

1.905 m (6'-3") Typical post spacing

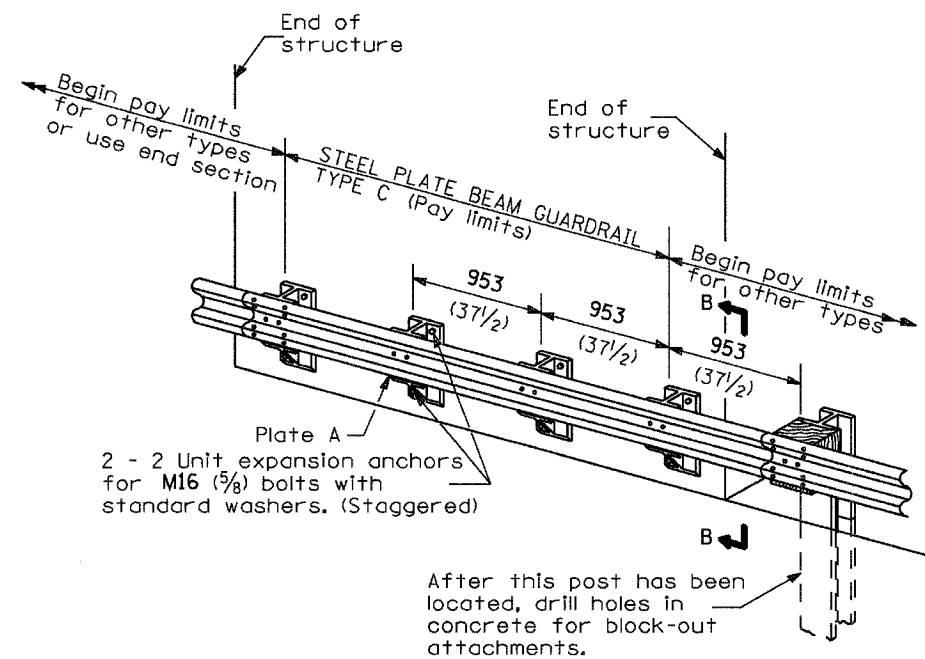


SECTION A-A



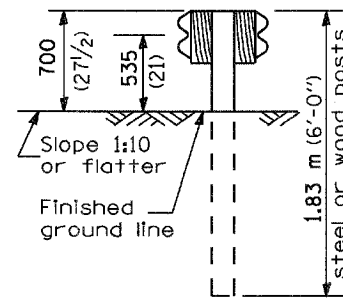
TYPE B

953 (37 1/2) Closed post spacing

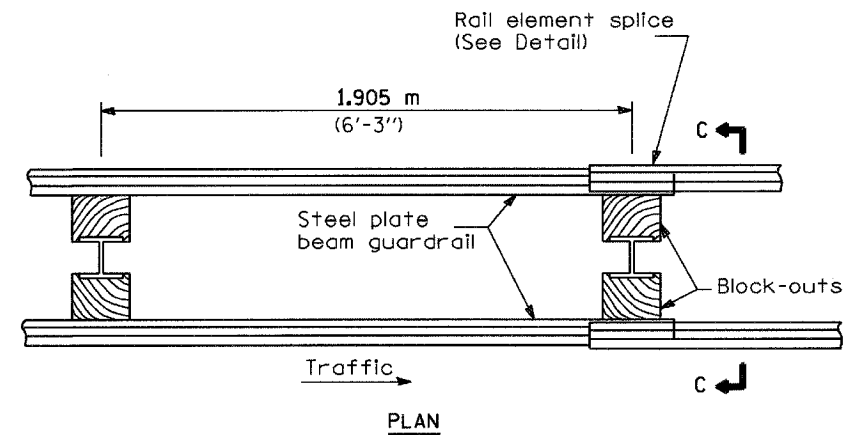


TYPE C

953 (37 1/2) Block-out spacing

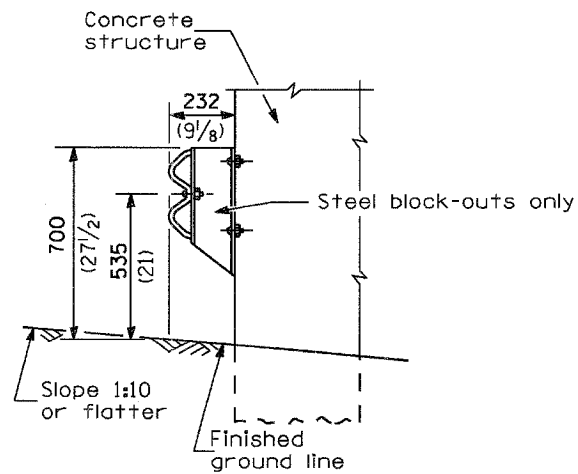


SECTION C-C



TYPE D

Double steel plate beam guardrail
1.905 m (6'-3") typical post spacing



SECTION B-B

GENERAL NOTES

All slope ratios are expressed as units of vertical displacement to units of horizontal displacement (V:H).

All dimensions are in millimeters (Inches) unless otherwise shown.

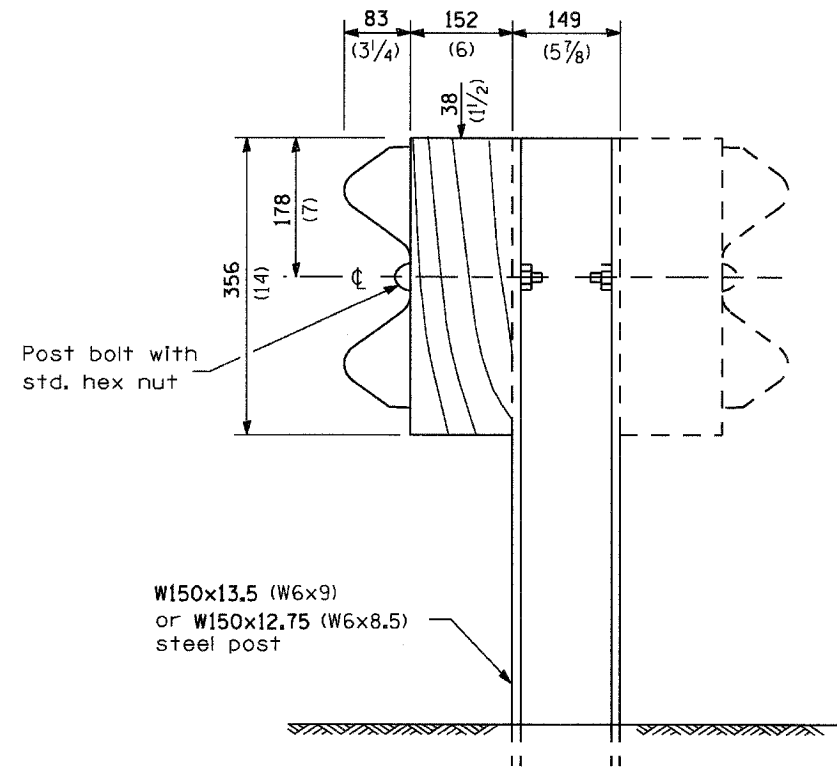
Illinois Department of Transportation	
PASSED <i>[Signature]</i> Apr 11, 2006 ENGINEER OF POLICY AND PROCEDURES	ISSUED 1-1-97
APPROVED <i>[Signature]</i> Apr 11, 2006 ENGINEER OF DESIGN AND ENVIRONMENT	

DATE	REVISIONS
4-1-06	Deleted plate washer F.
1-1-05	Rev. post in impervious material on sheet 4.

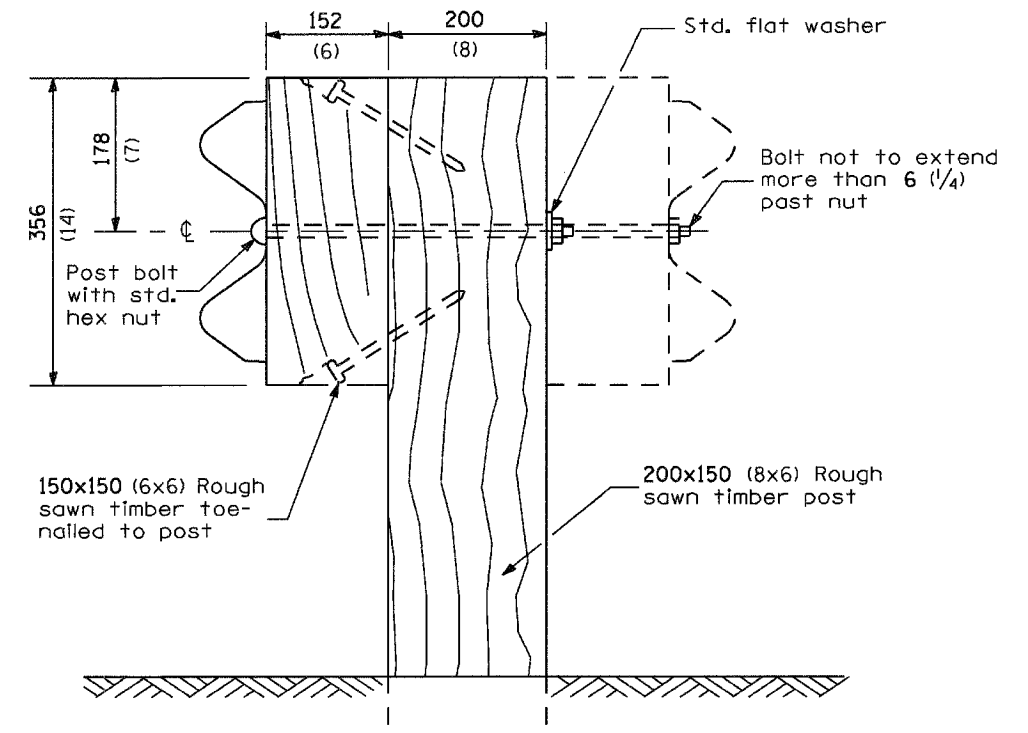
STEEL PLATE BEAM GUARDRAIL

(Sheet 1 of 4)

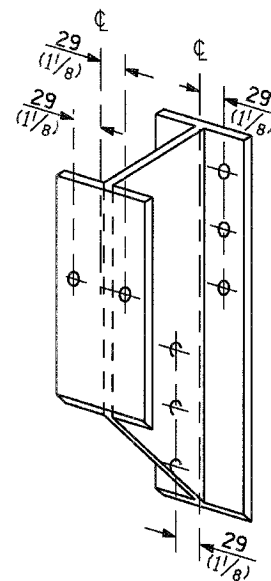
STANDARD 630001-06



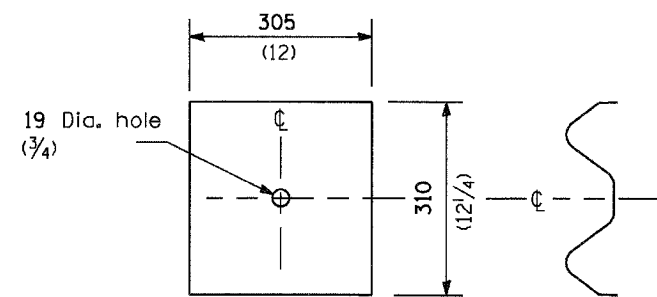
STEEL POST CONSTRUCTION



WOOD POST CONSTRUCTION



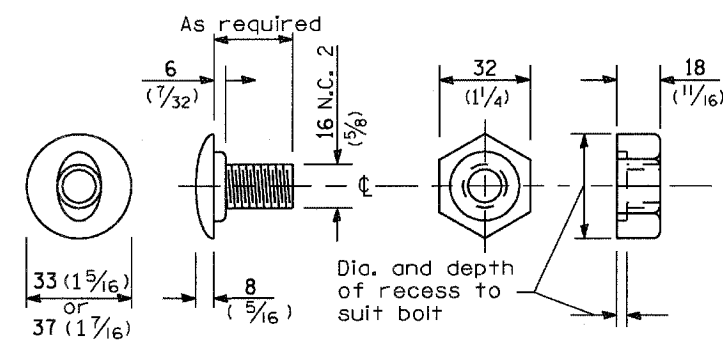
STEEL BLOCK-OUT DETAIL



NOTE

Plate A shall be placed between rail element and block-out at non-splice mounting points only when steel block-outs are used.

PLATE A

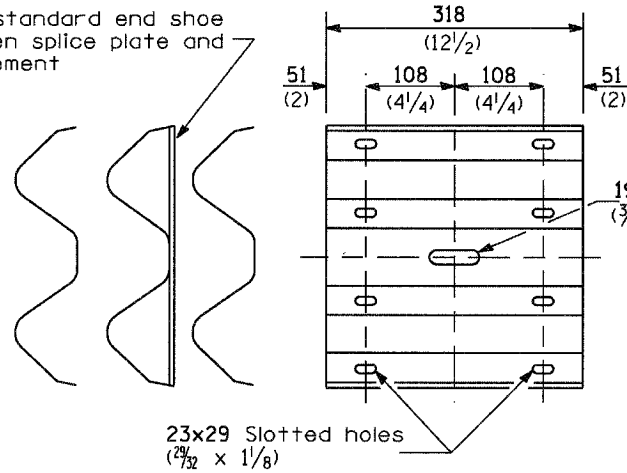


POST OR SPLICE BOLT & NUT

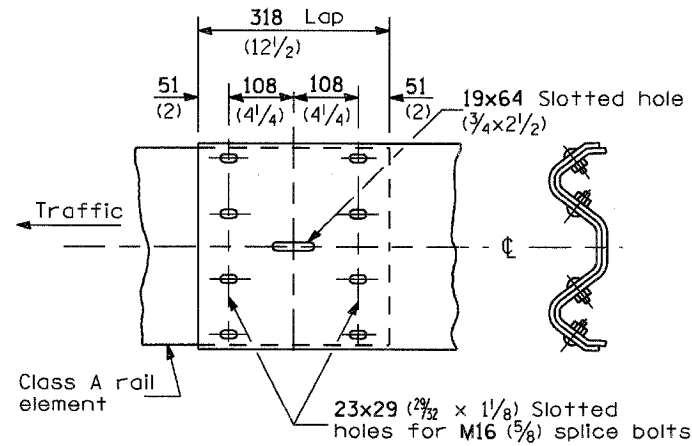
Illinois Department of Transportation
 PASSED April 1, 2006
 ENGINEER OF POLICY AND PROCEDURES
 APPROVED April 1, 2006
 ENGINEER OF DESIGN AND ENVIRONMENT

**STEEL PLATE BEAM
 GUARDRAIL**
 (Sheet 2 of 4)
STANDARD 630001-06

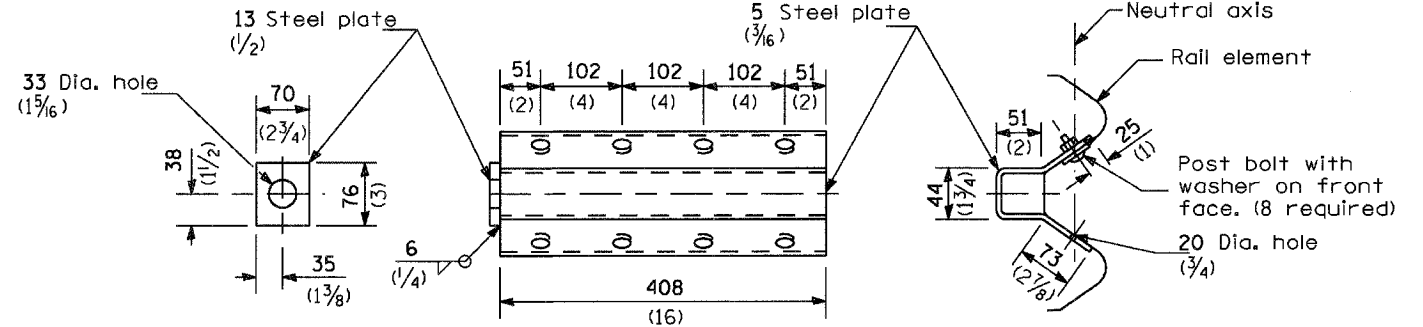
Place standard end shoe between splice plate and rail element



SPLICE PLATE



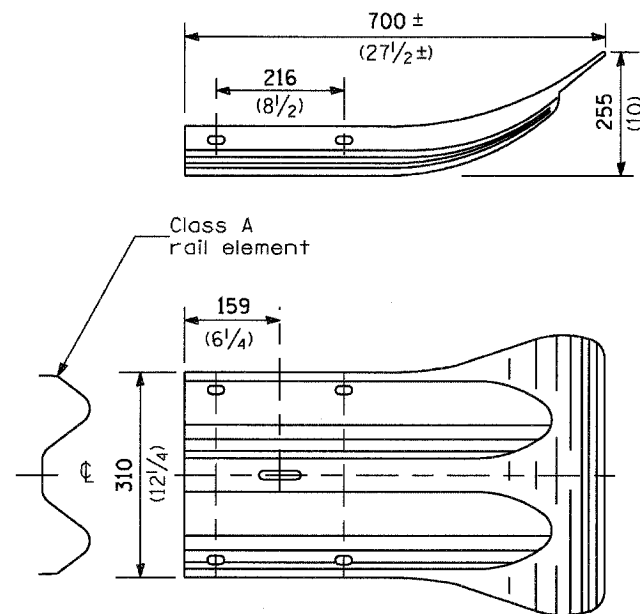
RAIL ELEMENT SPLICE



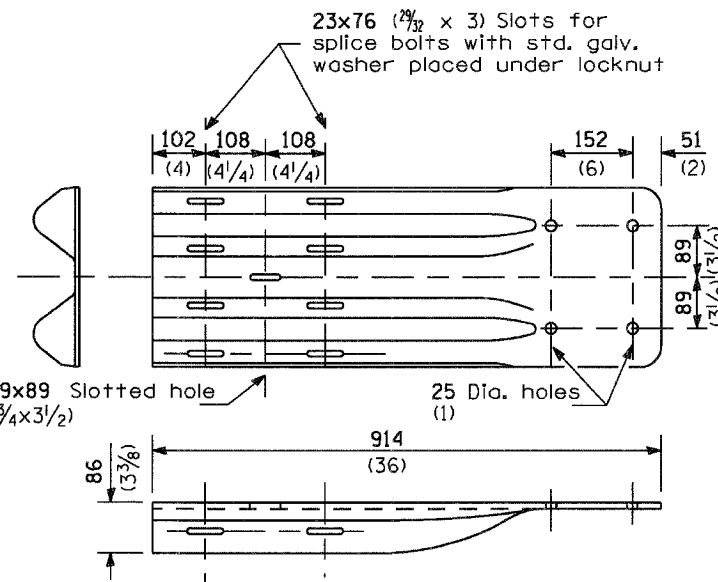
NOTE

Anchor plate T shall be used to attach cable assembly to guardrail when required on traffic barrier terminals.

ANCHOR PLATE T DETAILS



END SECTION



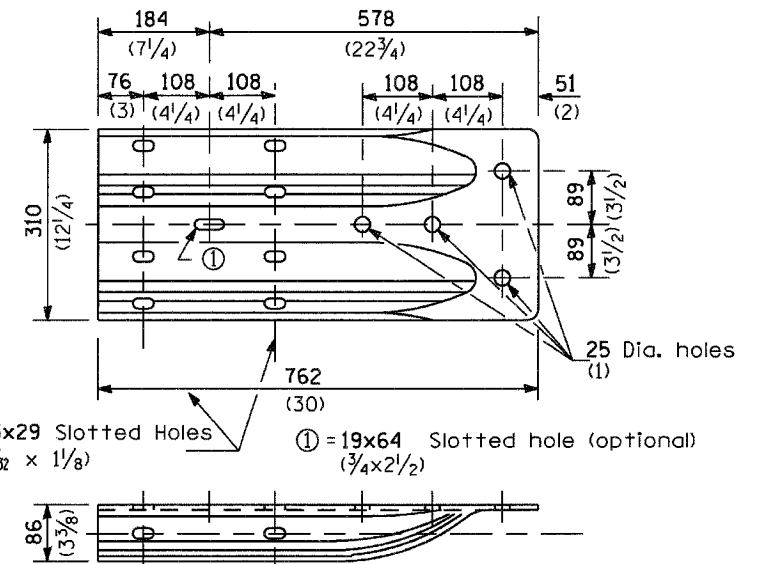
NOTE

When end shoe is attached to a bridge parapet which has an expansion joint, the bolts shall be provided with a locknut or double nut and shall be tightened only to a point that will allow guardrail movement.

The standard end shoe shall be attached to the concrete with pre-drilled or self-drilling anchor bolts. The anchor cone shall be set flush with the surface of the concrete.

Externally threaded studs protruding from the surface of the concrete will not be permitted.

END SHOE



ALTERNATE END SHOE

Illinois Department of Transportation

PASSED *[Signature]* Apr 11, 2006
ENGINEER OF POLICY AND PROCEDURES

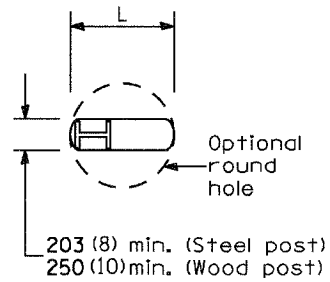
APPROVED *[Signature]* Apr 11, 2006
ENGINEER OF DESIGN AND ENVIRONMENT

ISSUED 1-1-9

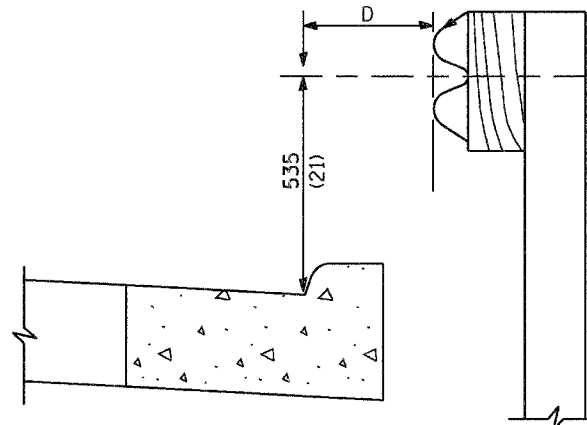
**STEEL PLATE BEAM
GUARDRAIL**

(Sheet 3 of 4)

STANDARD 630001-06



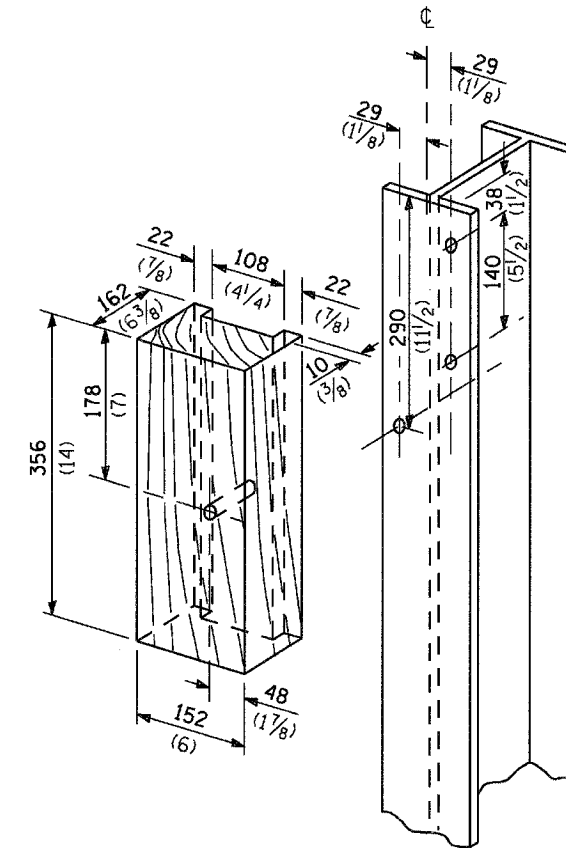
PLAN



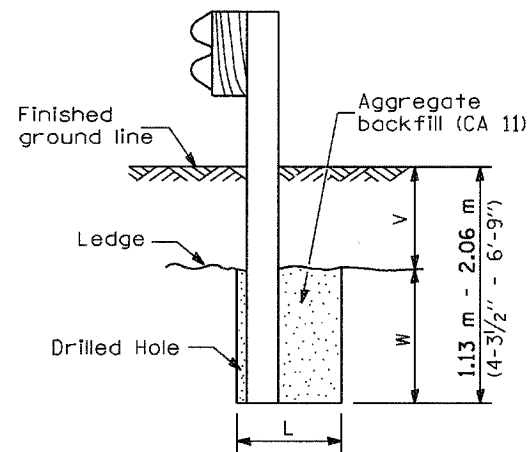
Note:
If it is necessary for D to be more than 300 (12) and less than 3.0 m (10'-0") type M-5 (M-2) curb and gutter (Std. 606001) shall be used in front of and in advance of the guardrail.

GUARDRAIL PLACED BEHIND CURB

(D = 0 desirable to 300 (12) maximum)



WOOD BLOCK-OUT AND STEEL POST DETAILS

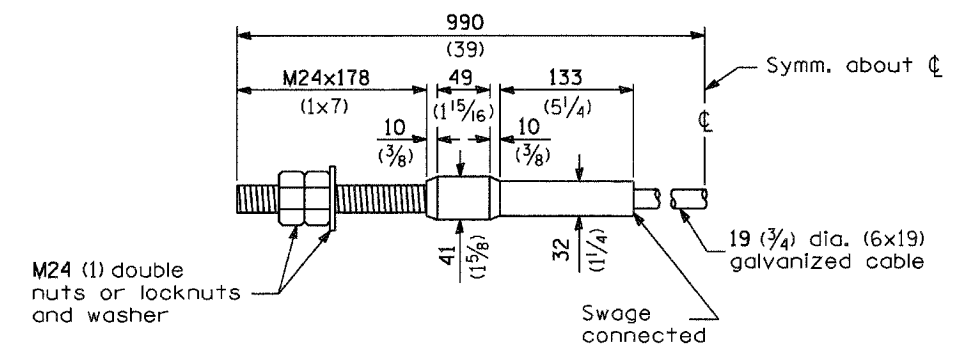


Note:
Ledge line is top of rock ledge or hard slag fill.

ELEVATION

FOOTING FOR POST WHEN IMPERVIOUS MATERIAL IS ENCOUNTERED

V	W	L	
		Steel Post	Wood Post
0 - 460 (0 - 18)	610 (24)	530 (21)	580 (23)
>460 - 825 (>18 - 41.5)	305 (12)	203 (8)	250 (10)
>825 - 1.13 m (>41.5 - 53.5)	305 - 0 (12 - 0)	203 (8)	250 (10)



CABLE ASSEMBLY

(18,100 kg (40,000 lbs.) min. breaking strength)
Tighten to taut tension.

Illinois Department of Transportation
PASSED April 1, 2006
ENGINEER OF POLICY AND PROCEDURES
APPROVED April 1, 2006
Michael J. Hove
ENGINEER OF DESIGN AND ENVIRONMENT

**STEEL PLATE BEAM
GUARDRAIL**

(Sheet 4 of 4)

STANDARD 630001-06