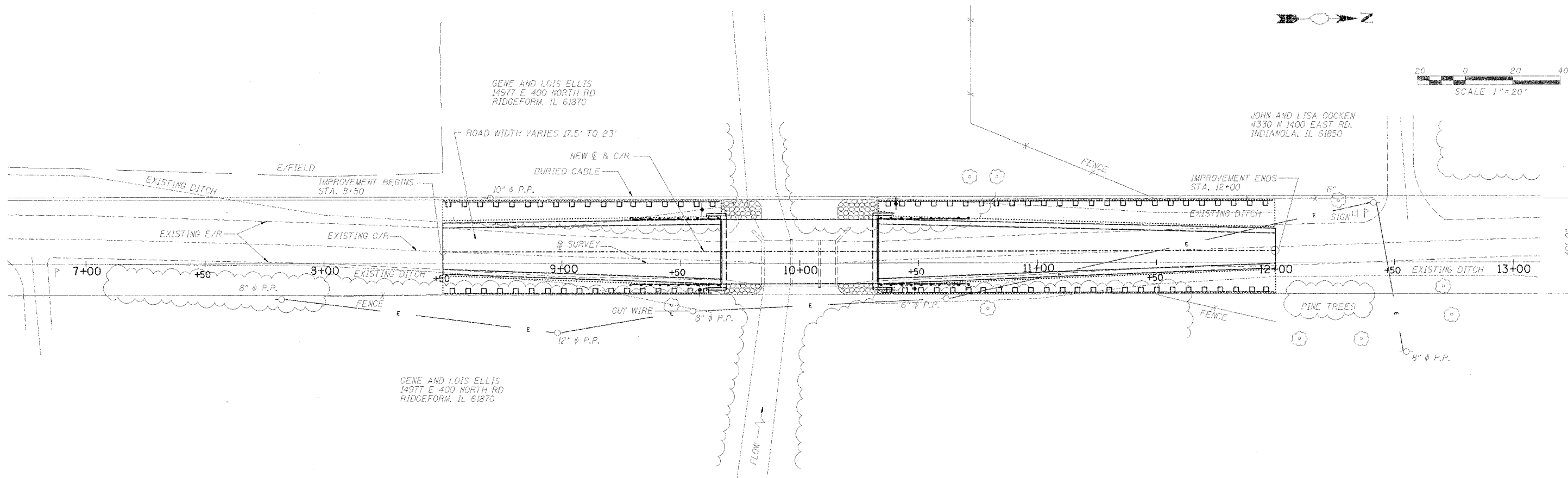


ROUTE NO.	SECTION	COUNTY	SHEETS	PAGE
TR 318A	*	Vermilion	12	11
FED. ROAD DIST. NO. 7		ILL. ROAD DIST. PROJECT		

*00-06121-00-BR

INTENDED SEQUENCE

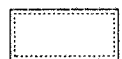
1. PLACEMENT OF PERIMETER EROSION CONTROL BARRIER PRIOR TO COMMENCEMENT OF ANY WORK. SEE STANDARD 280001.
2. CONSTRUCTION OF NEW SUBSTRUCTURE.
3. REMOVAL OF THE EXISTING STRUCTURE.
4. CONSTRUCTION OF THE NEW SUPERSTRUCTURE.
5. THE PLACEMENT AND MAINTENANCE OF TEMPORARY EROSION CONTROLS.
6. FINAL GRADING AND SHAPING INCLUDING PLACEMENT OF AGGREGATE BASE COURSE & BITUMINOUS SURFACE.
7. REMOVAL AND PROPER CLEAN UP OF TEMPORARY EROSION CONTROLS.
8. PLACEMENT OF PERMANENT EROSION CONTROLS.



PERMANENT EROSION CONTROL



Grouted RipRap



Seeding, Cl. 2 with Fertilizer and Mulch

TEMPORARY EROSION CONTROL



Temporary Ditch Check



Perimeter Erosion Barrier

PERIMETER EROSION BARRIER

STA	OFFSET	TO	STA	OFFSET	LENGTH
8+50	20' RT		9+67	20' RT	117 FT
8+50	20' LT		9+67	20' LT	117 FT
10+33	20' LT		12+00	20' LT	167 FT
10+33	20' RT		12+00	20' RT	167 FT
					TOTAL = 568 FT

TEMPORARY DITCH CHECKS

STA	OFFSET	QUANTITY
9+60	RT	1 EACH
9+60	LT	1 EACH
10+40	RT	1 EACH
10+40	LT	1 EACH
		TOTAL = 4

TEMPORARY EROSION CONTROL		
Bill of Materials		
Item	Unit	Quantity
Temporary Erosion Control Seeding	Pound	100
Temporary Ditch Checks	Each	4
Perimeter Erosion Barrier	Foot	568