

ROUTE NO.	SECTION	COUNTY	SHTS	SHEET	SHEET NO.
FAS 1732	#	MACOUPIN	22	5	17 SHEETS
FED. ROAD DIST. NO. 7		ILLINOIS FED. AID PROJECT			

*01-00081-00-BR

GENERAL NOTES

Reinforcement bars shall conform to the requirements of AASHTO M 31 or M 322 Grade 60.

The Contractor shall drive two HP 10x57 test piles in permanent locations, one at the East Abutment and one at Pier 2, as directed by the Engineer before ordering the remainder of the piles.

Layout of the slope protection system may be varied in the field to suit ground conditions as directed by the Engineer.

All construction joints shall be bonded.

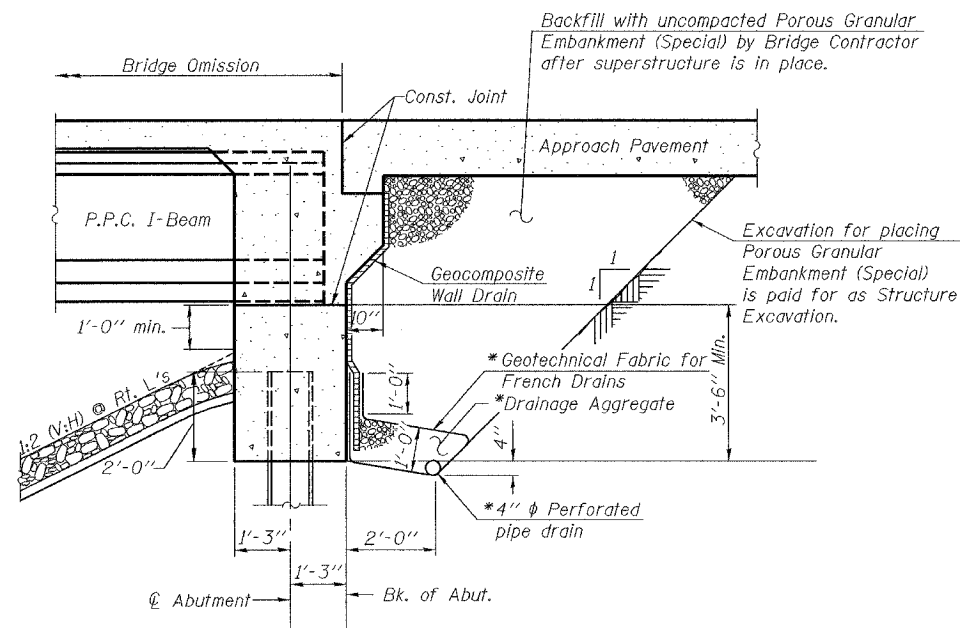
The Standard Specifications adopted by the Department of Transportation January 1, 2007 shall apply to this work.

The steel H-piles shall be according to AASHTO M 270 Grade 50.

See Special Provisions for Boring Data.

TOTAL BILL OF MATERIAL

ITEM	UNIT	SUPER	SUB	TOTAL
Removal of Existing Structures	Each			1
Structure Excavation	Cu. Yd.		180	180
Concrete Superstructure	Cu. Yd.	459.6		459.6
Protective Coat	Sq. Yd.	1676		1676
Concrete Structures	Cu. Yd.		87.8	87.8
Reinforcement Bars, Epoxy Coated	Lb.	102,620	13,830	116,450
Furnishing Steel Piles, HP 10x57	Ft.		3406	3406
Driving Piles	Ft.		3406	3406
Test Piles Steel HP 10x57	Each		2	2
Name Plates	Each		1	1
Porous Granular Embankment (Special)	Cu. Yd.			154
Furnishing and Erecting Precast Prestressed Concrete I-Beams, 42"	Ft.	2454		2454
Bridge Deck Grooving	Sq. Yd.	1652		1652
Bar Splicers	Each		48	48
Concrete Encasement	Cu. Yd.		39.0	39.0
Stone Riprap Class A4	Sq. Yd.			559
Filter Fabric	Sq. Yd.			559
Channel Excavation	Cu. Yd.			470
Steel Railing, Type SM	FT.	826		826
Pile Shoes	Each		46	46
Underwater Structure Excavation Protection - Location 1	Each		1	1
Underwater Structure Excavation Protection - Location 2	Each		1	1
Underwater Structure Excavation Protection - Location 3	Each		1	1
Underwater Structure Excavation Protection - Location 4	Each		1	1
Pipe Underdrains for Structures 4"	Foot		140	140
Geocomposite Wall Drain	Sq. Yd.		89	89



SECTION THRU INTEGRAL ABUTMENT
(Horiz. dim. @ Rt. L's)

* Included in the cost of Pipe Underdrains for Structures.

All drainage system components shall extend to 2'-0" from the end of each wingwall except an outlet pipe shall extend until intersecting with the side slopes. The pipes shall drain into concrete headwalls. (See Article 601.05 of the Standard Specifications and Highway Standard 601101).

PLOT DATE = 10/06/2006
FILE NAME = \\s\8888\059-3331-811-02.dgn
PLOT SCALE = 0.110000 1' / IN.
USER NAME = IFG.

ILLINOIS DEPARTMENT OF TRANSPORTATION	
SHEET TITLE GENERAL NOTES & TOTAL BILL OF MATERIAL	
PROJECT FAS ROUTE 1732 (COUNTY ROUTE 11) SECTION 01-00081-00-BR MACOUPIN COUNTY STATION 167+61.06 STRUCTURE NUMBER 059-3331	PROJECT NO. 04081 SCALE DATE 10/03/06 DRAWN BY TFG CHECKED BY GB/ML/MCB DRAWING NO.
COOMBE-BLOXDORF P.C. Engineers / Land Surveyors Springfield, Illinois Design Firm License No. 184-002703	
2 OF 17 SHTS	