

| F.A.S. RTE. | SECTION | COUNTY    | TOTAL SHEETS | SHEET NO. |
|-------------|---------|-----------|--------------|-----------|
| 2796        | (L,K)B  | EFFINGHAM | 35           | 1         |

STATE OF ILLINOIS  
DEPARTMENT OF TRANSPORTATION  
DIVISION OF HIGHWAYS

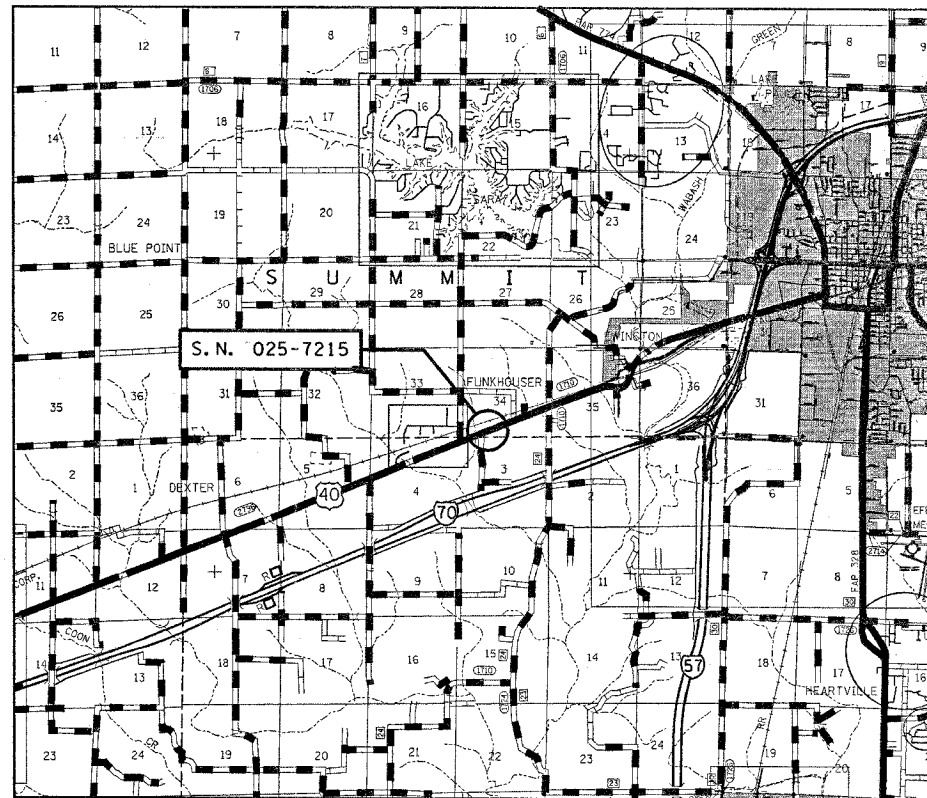
**PROPOSED  
HIGHWAY PLANS**

FAS ROUTE 2796  
SECTION (L,K)B

EFFINGHAM COUNTY  
BOX CULVERT REPLACEMENT

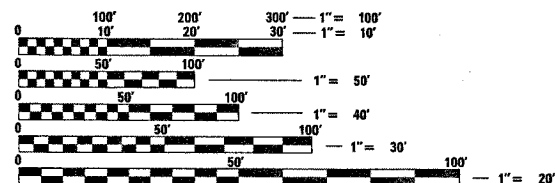
C-97-033-02

FOR INDEX OF SHEETS, SEE SHEET NO. 2



GROSS LENGTH = 700 FEET = 0.13 MILES  
NET LENGTH = 700 FEET = 0.13 MILES

2005 ADT = 4450



FULL SIZE PLANS HAVE BEEN PREPARED USING STANDARD ENGINEERING SCALES. REDUCED SIZED PLANS WILL NOT CONFORM TO STANDARD SCALES. IN MAKING MEASUREMENTS ON REDUCED PLANS, THE ABOVE SCALES MAY BE USED.

J.U.L.I.E.  
JOINT UTILITY LOCATION INFORMATION FOR EXCAVATION  
1-800-892-0123

STATE OF ILLINOIS  
DEPARTMENT OF TRANSPORTATION  
DIVISION OF HIGHWAYS

SUBMITTED Oct 26, 2006  
Christ W. Reed  
DEPUTY DIRECTOR OF HIGHWAYS, REGION ENGINEER

December 8, 2006  
Eric E. Horn  
INTERIM ENGINEER OF DESIGN AND ENVIRONMENT

December 8, 2006  
Milton R. Sees  
DIRECTOR OF HIGHWAYS, CHIEF ENGINEER

**PRINTED BY THE AUTHORITY  
OF THE STATE OF ILLINOIS**

CONTRACT NO. 94942