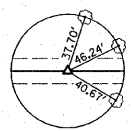


ALL TIES MAG. NAIL IN 8" TREES



P.O.T. STA. 95+00.00 RR SPIKE (FLUSH)

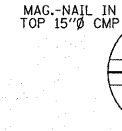
MAG.-NAIL IN PP (B.M.#1)



P.I. STA. 98+99.20 S/4 COR. SEC. 10, T. 8 N., R. 1 E., 3RD P.M. IRON PIN W/CAP (C.P.#4)

ARVIL BALDCK W/2, SE/4, SEC 10, T. 8 N., R. 1 E., 3RD P.M.

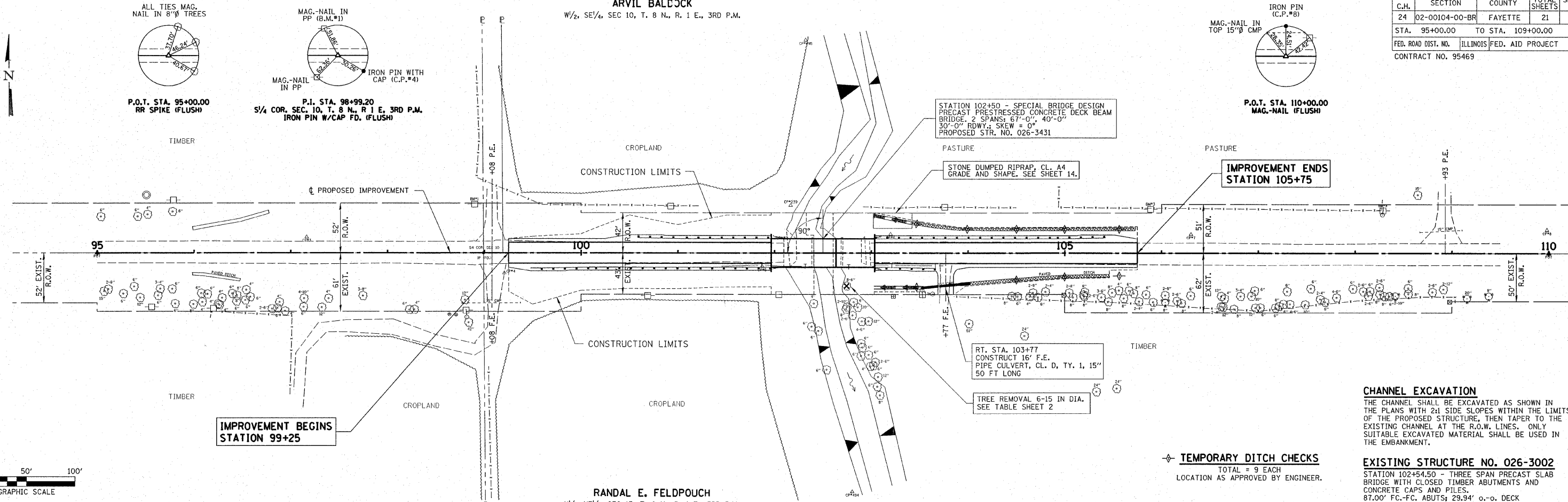
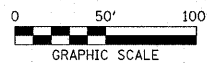
MAG.-NAIL IN TOP 15" CMP



P.O.T. STA. 110+00.00 MAG.-NAIL (FLUSH)

C.H.	SECTION	COUNTY	TOTAL SHEETS	SHEET NO.
24	02-00104-00-BR	FAYETTE	21	4
STA. 95+00.00 TO STA. 109+00.00		ILLINOIS FED. AID PROJECT		
CONTRACT NO. 95469				

PLAN	DATE	BY
SURVEYED	02/20/02	BA
PLOTTED	03/27/02	BA
CHECKED		
REV. OF WAY CHECKED		
NO. AND DATE ADD FILE NAME		

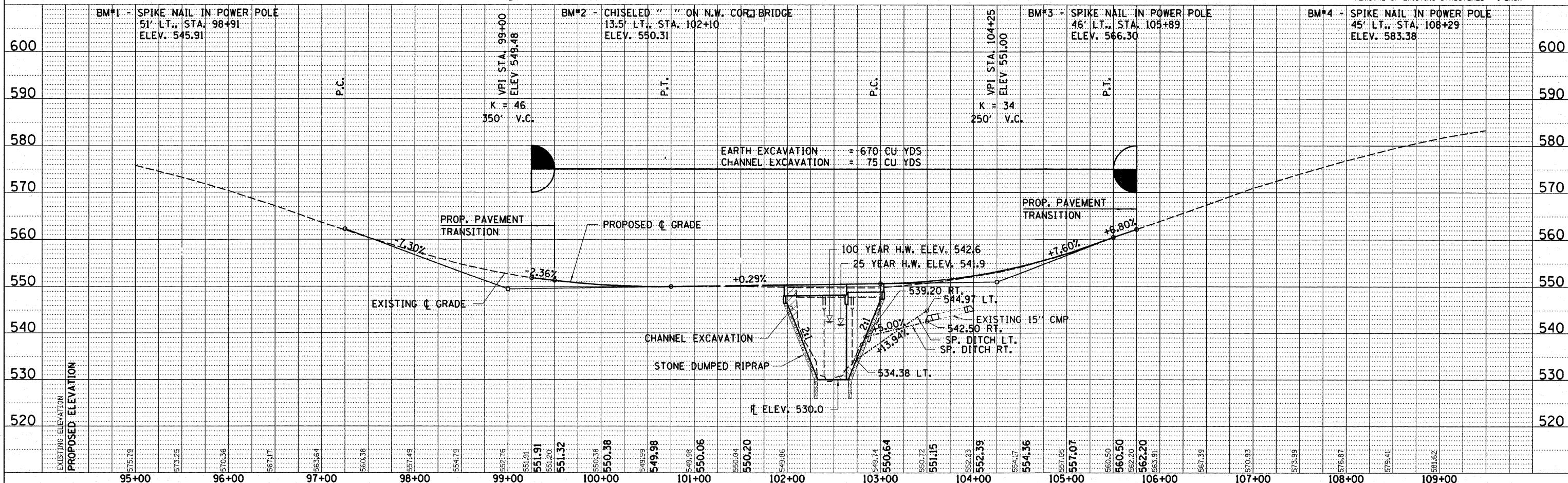


CHANNEL EXCAVATION
THE CHANNEL SHALL BE EXCAVATED AS SHOWN IN THE PLANS WITH 2:1 SIDE SLOPES WITHIN THE LIMITS OF THE PROPOSED STRUCTURE, THEN TAPER TO THE EXISTING CHANNEL AT THE R.O.W. LINES. ONLY SUITABLE EXCAVATED MATERIAL SHALL BE USED IN THE EMBANKMENT.

TEMPORARY DITCH CHECKS
TOTAL = 9 EACH
LOCATION AS APPROVED BY ENGINEER.

EXISTING STRUCTURE NO. 026-3002
STATION 102+54.50 - THREE SPAN PRECAST SLAB BRIDGE WITH CLOSED TIMBER ABUTMENTS AND CONCRETE CAPS AND PILLS.
87.00' FC-FC ABUTS, 29.94' o.-o. DECK
REMOVAL OF EXISTING STRUCTURES = 1 EACH

PROFILE	DATE	BY
SURVEYED	02/20/02	BA
PLOTTED	03/27/02	BA
CHECKED		
REV. OF WAY CHECKED		
NO. AND DATE ADD FILE NAME		



EARTH EXCAVATION = 670 CU YDS
CHANNEL EXCAVATION = 75 CU YDS

PROP. PAVEMENT TRANSITION

100 YEAR H.W. ELEV. 542.6
25 YEAR H.W. ELEV. 541.9

EXISTING 15" CMP
SP. DITCH LT.
SP. DITCH RT.

CHANNEL EXCAVATION
STONE DUMPED RIPRAP

ELEV. 530.0

STATION	ELEVATION	MARKER
95+00	575.79	BM#1 - SPIKE NAIL IN POWER POLE 51' LT., STA. 98+91 ELEV. 545.91
96+00	573.25	
97+00	570.36	
98+00	567.17	
99+00	563.64	
99+00	560.38	
99+00	557.49	
99+00	554.79	
99+00	552.76	VPI STA. 99+00 ELEV. 548.48
99+00	551.91	
99+00	551.20	
99+00	551.32	
100+00	550.38	
100+00	549.98	
100+00	549.98	
100+00	550.06	
100+00	550.04	
100+00	550.20	
100+00	549.86	
101+00	549.74	
101+00	550.64	
101+00	550.72	
101+00	551.15	
101+00	552.33	
101+00	552.39	
101+00	554.17	
101+00	554.36	
101+00	557.05	
101+00	557.07	
101+00	560.50	
101+00	562.20	
101+00	562.20	
101+00	563.91	
101+00	567.35	
101+00	570.95	
101+00	573.99	
101+00	575.87	
101+00	579.41	
101+00	581.82	
101+00	583.38	BM#4 - SPIKE NAIL IN POWER POLE 45' LT., STA. 108+29 ELEV. 583.38