

ROUTE NO.	SECTION	COUNTY	TOTAL SHEETS	SHEET NO.
F.A.S. 712	02-00104-00-BR	FAYETTE	21	5
FED. ROAD DIST. NO.		ILLINOIS	FED. AID PROJECT-	

CONTRACT NO. 95469

SIGN LEGEND

1		R11-3 WITH 2 AMBER FLASHING LIGHTS. (3 REQ'D)	
2		R11-3 WITH 2 AMBER FLASHING LIGHTS. (1 REQ'D)	
3		W20-2, 48" x 48" WITH AMBER FLASHING LIGHT AND FLAG. (3 REQ'D)	12
4		W20-3, 48" x 48" WITH AMBER FLASHING LIGHT AND FLAG. (2 REQ'D)	13
6		W20-3, 48" x 48" WITH AMBER FLASHING LIGHT AND FLAG. (2 REQ'D)	14
7		M3-2 24"x12" (11 REQ'D)	15
8		M3-4 24"x12" (8 REQ'D)	16
9		M4-8 24"x12" (17 REQ'D)	17
10		M1-1100 24"x12" (22 REQ'D)	18
			19
			21
			22

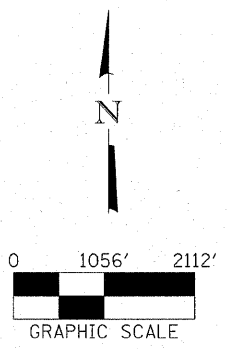
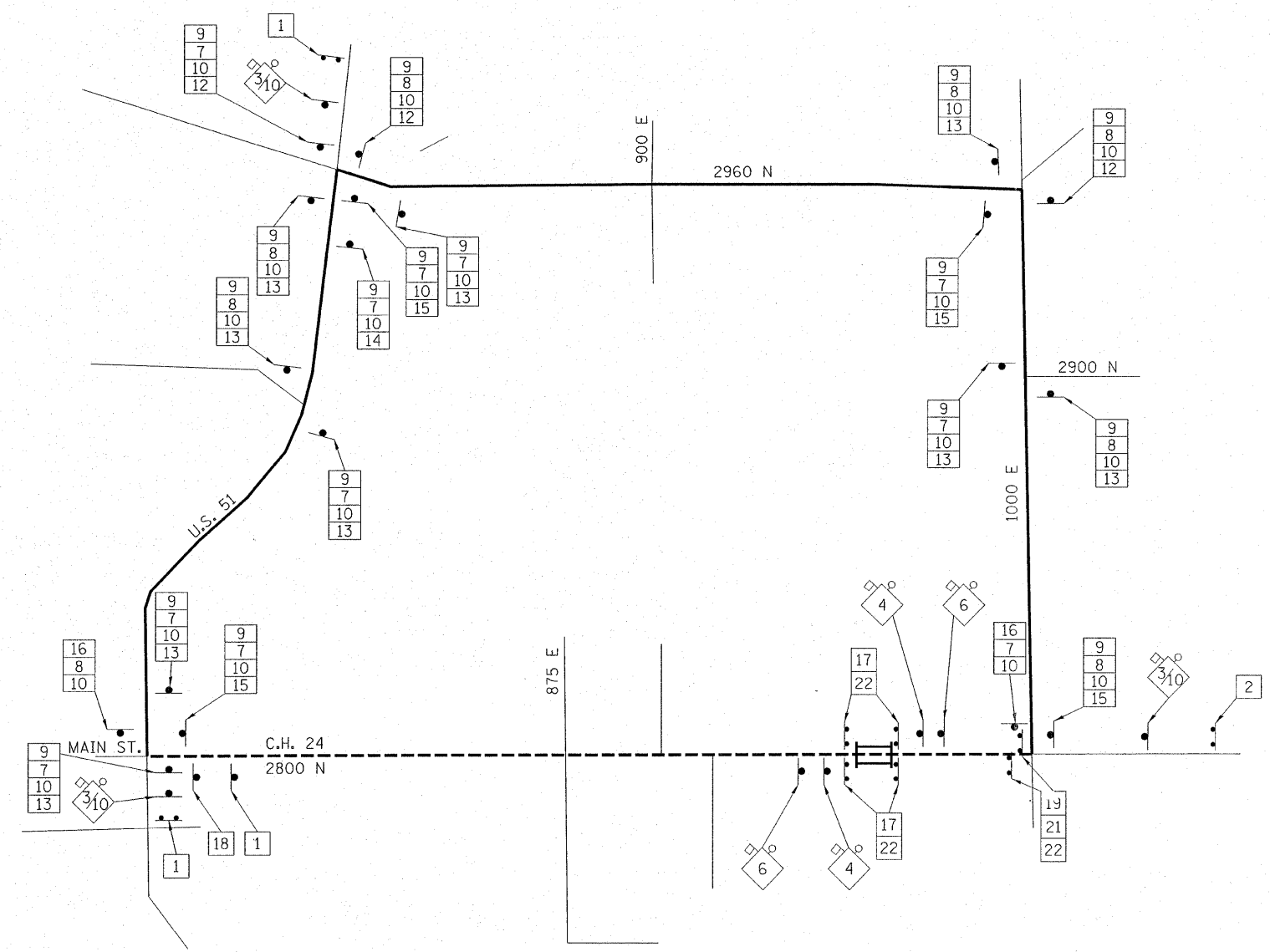
LEGEND

— DETOUR ROUTE
 — ROAD OPEN TO LOCAL TRAFFIC ONLY

48" x 48" CONSTRUCTION SIGN, WITH AMBER FLASHING LIGHT AND ORANGE WARNING FLAG (OPTIONAL). NUMBER DENOTES SIGN TYPE

M4-9 SERIES DETOUR SIGN WITH DIRECTION AND ROAD NAME PLATES. NUMBER DENOTES TYPE

OTHER DETOUR SIGNS, NUMBER DENOTES TYPE



HLR
 Rice, Berry and Associates
 A Division of Hampton, Lenzini and Renwick, Inc.
 Civil & Structural Engineers
 3085 Stevenson Drive
 Suite 201
 Springfield, Illinois 62703
 217-546-3400
 P.O. Box 1036
 DuQuoin, Illinois 62832
 618-790-4637
 Account Number: 12-34-0002-1
 Date: 03/09/06
 DESIGNED: L.F.S. | CHECKED: S.W.M. | DRAWN: D.T.M.

DETOUR PLAN
 SECTION 02-00104-00-BR
 F.A.S. 712 / C.H. 24
 FAYETTE COUNTY