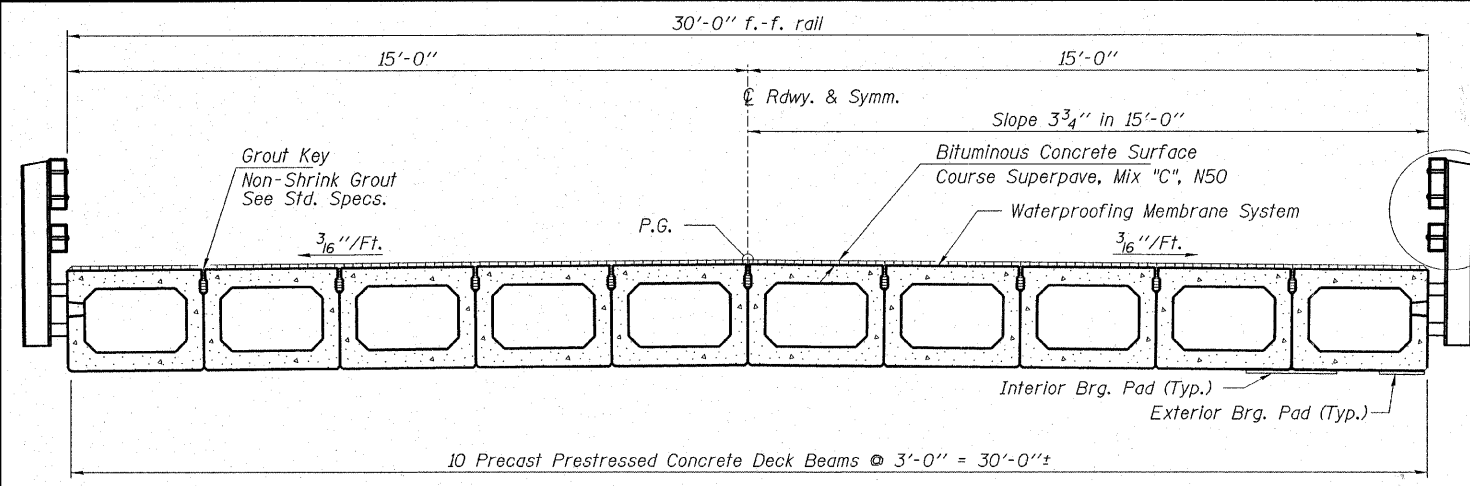


ROUTE NO.	SECTION	COUNTY	TOTAL SHEETS	SHEET NO.
F.A.S. 712	02-00104-00-BR	FAYETTE	21	15
FED. ROAD DIST. NO.		ILLINOIS	FED. AID PROJECT-	
CONTRACT NO. 95469				



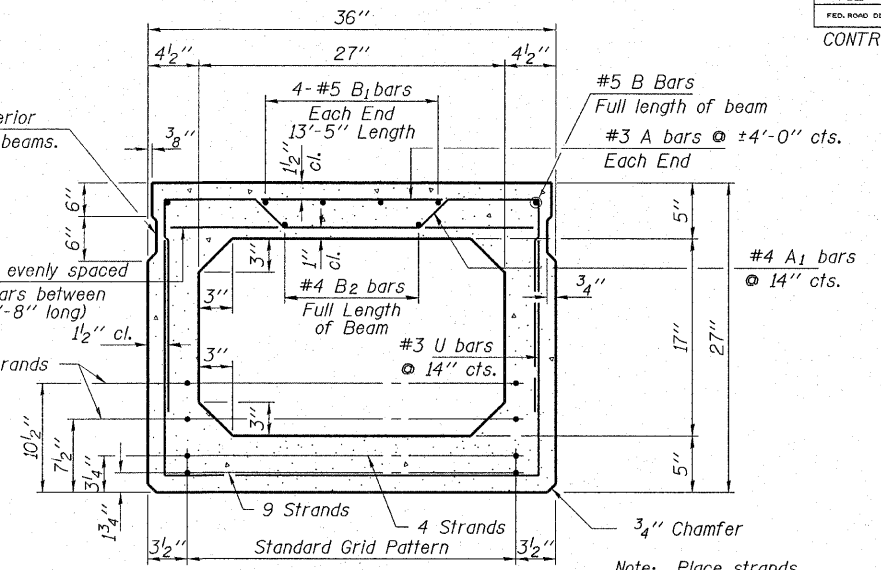
CROSS SECTION

See sheet 17 for complete rail details.

Omit key on exterior face of outside beams.

2-#3 A bars evenly spaced between A1 bars between end blocks (2'-8" long)

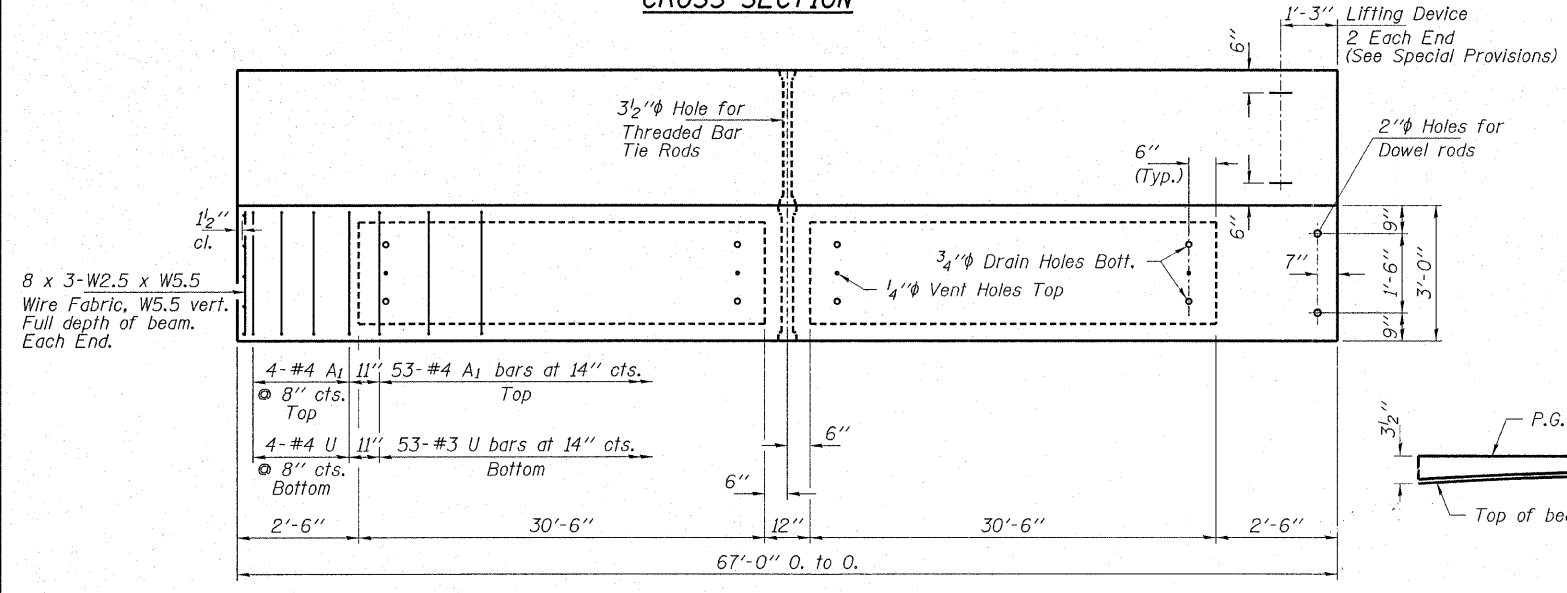
2 Strands



TYPICAL SECTION

17-1/2" Strands Each Strand Stressed to 30,900 Lbs.
9-Strands 1 3/4" up, 4-Strands 3/4" up, 2-Strands 7/2" up,
2-Strands 10 1/2" up. Expected Camber = 1 1/2"

Note: Place strands symmetrically about center of beam.



PLAN

1'-3" Lifting Device
2 Each End
(See Special Provisions)

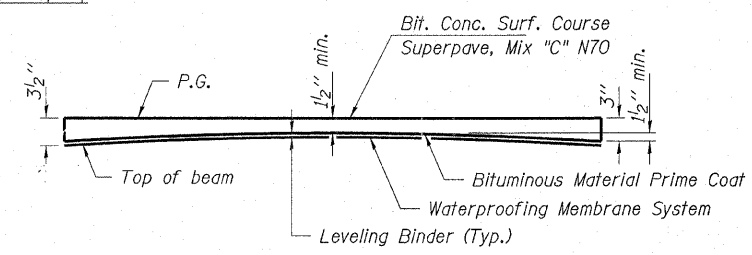
2" Holes for Dowel rods

3/2" Hole for Threaded Bar Tie Rods

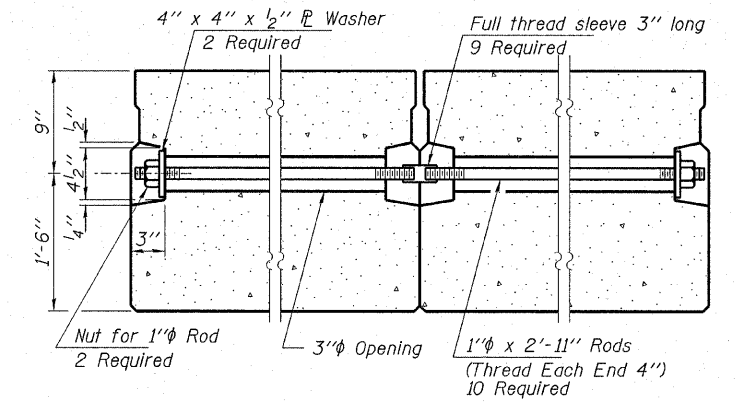
3/4" Drain Holes Bott.

1/4" Vent Holes Top

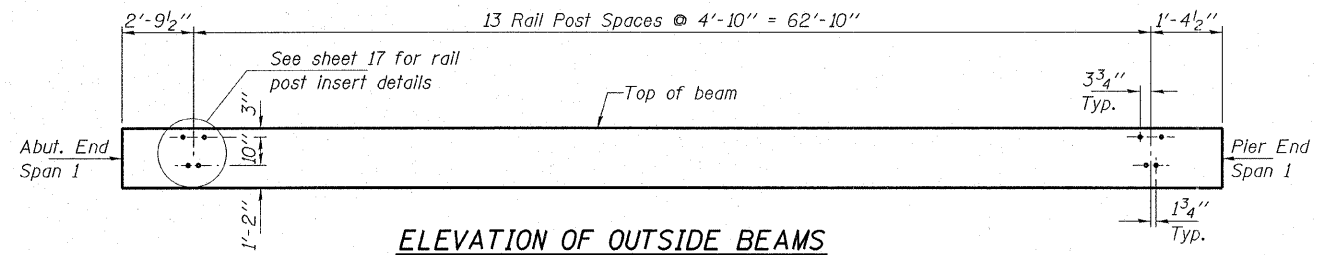
8 x 3-W2.5 x W5.5 Wire Fabric, W5.5 vert. Full depth of beam. Each End.



ANTICIPATED CAMBER DIAGRAM



TYPICAL TRANSVERSE TIE ASSEMBLY



ELEVATION OF OUTSIDE BEAMS

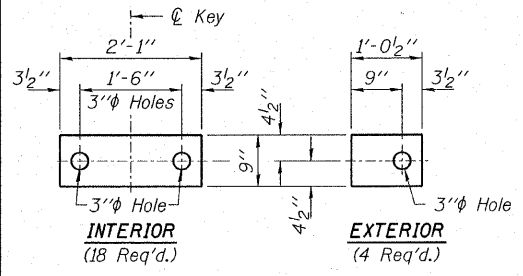
Showing Rail Post Spacing

NOTES

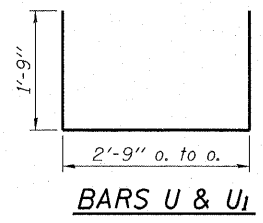
Prestressing steel shall be uncoated high strength, low relaxation 7-wire strand, Grade 270. The nominal diameter shall be 1/2" and the nominal cross-sectional area shall be 0.153 sq. in. Lifting loops shall be 2-1/2" phi-270 ksi strands, as shown. The 1" rods in the transverse tie assembly shall be tightened to a snug fit and the threads set. Pockets that receive transverse tie bar on outside shall be filled with grout after transverse tie assembly is in place. Reinforcement bars shall conform to the requirements of AASHTO M-31, M-42 or M-53 Grade 60. The bearing seat surfaces shall be adjusted by shimming to assure firm and even bearing. Two 1/8" fabric adjusting shims of the dimensions of the Exterior Bearing Pad shall be provided for each bearing. Keyway surfaces shall be cleaned to remove form oil or other bond breaking material prior to shipment of the beams. Cleaning shall be done by sandblasting the keyway areas between top of the beam and the bottom edge of the key. Required Release Strength, f'ci, shall be 4,000 p.s.i. An equal substitution of the low-relaxation strands for the stress-relieved strands will be permitted.

BILL OF MATERIAL

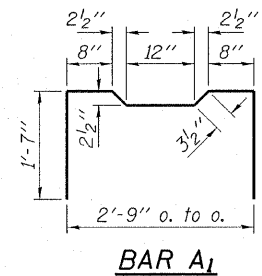
ITEM	UNIT	QUANTITY
Precast Prestressed Concrete Deck Beams (27" Depth)	Sq. Ft.	2,010
Waterproofing Membrane System	Sq. Yd.	228
PC Mortar Fairing Course	Foot	151
Bituminous Concrete Surface Cse, Superpave Mix C, N50	Ton	19
Leveling Binac (MM) Binder	Ton	6



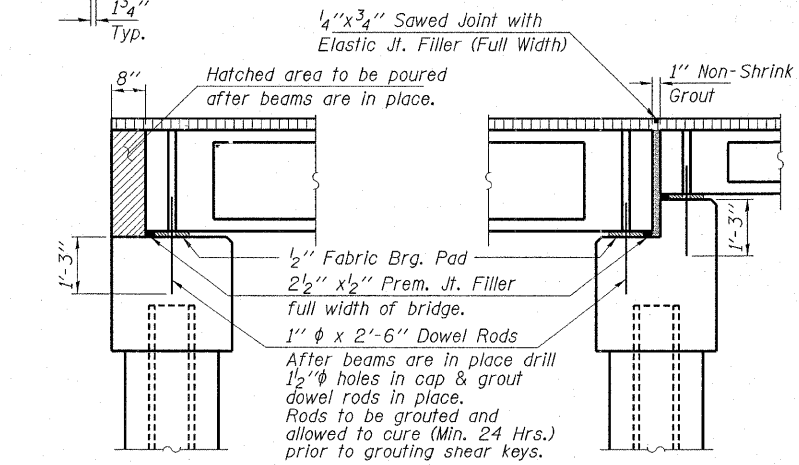
FABRIC BEARING PAD DETAILS



BARS U & U1



BAR A1



SECTION AT ABUTMENTS

SECTION AT PIERS

HLR
 Rice, Barry and Associates
 A Division of Hampton,
 Lenzini and Renwick, Inc.
 Civil & Structural Engineers
 3085 Stevenson Drive
 Suite 201
 Springfield, Illinois 62703
 217-546-3400
 P.O. Box 1036
 DuQuoin, Illinois 62832
 618-790-4637
 Account Number
 12-34-0002-1
 Date: 03/13/06
 DESIGNED: S.M.S. CHECKED: S.W.M. DRAWN: S.L.M.

SUPERSTRUCTURE SPAN 1
SECTION 02-00104-00-BR
F.A.S. 712 / C.H. 24
FAYETTE COUNTY
STR. NO. 026-3431 / STATION 102+50