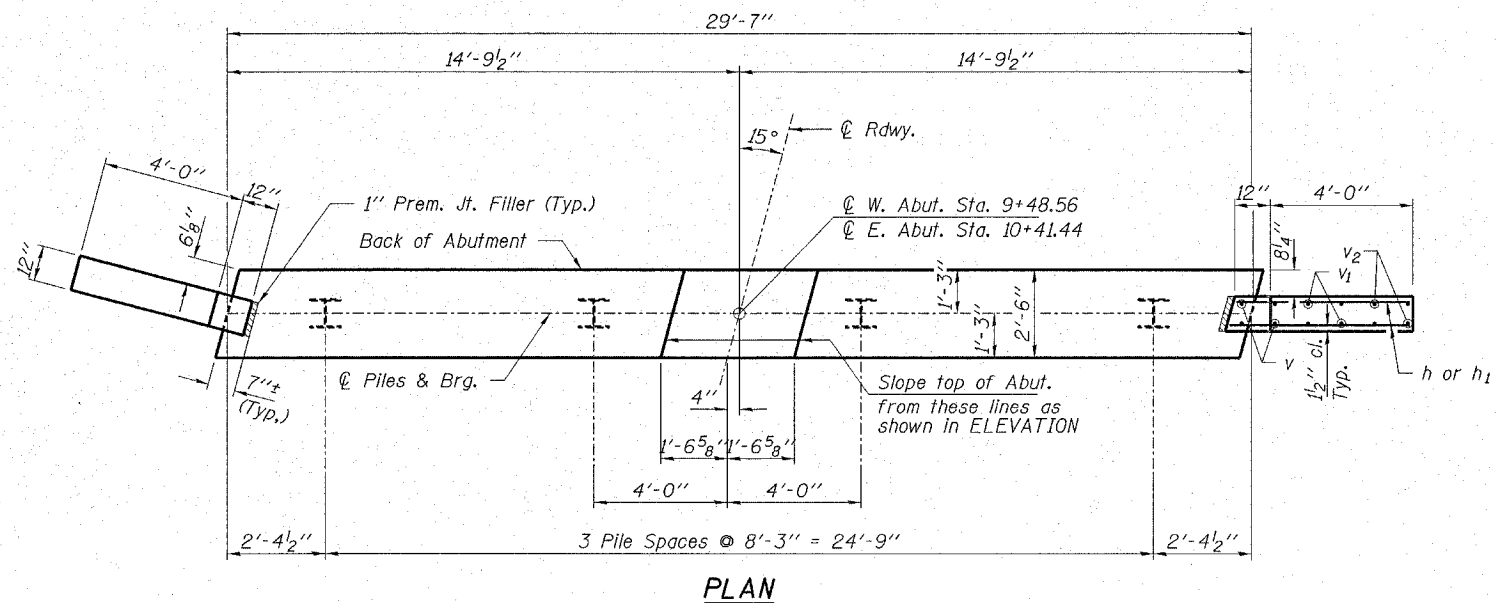
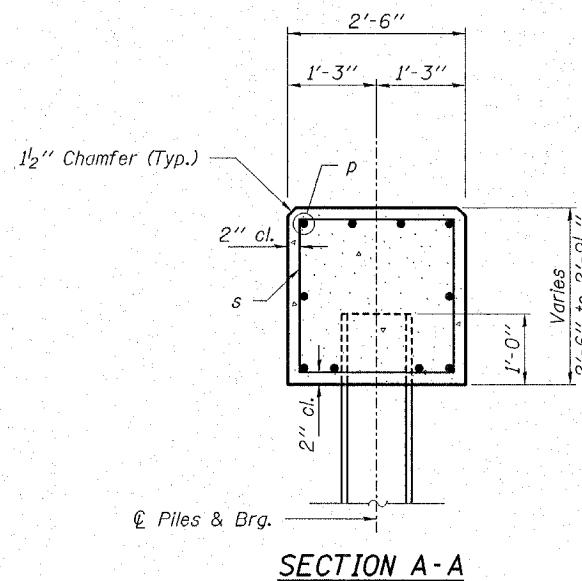


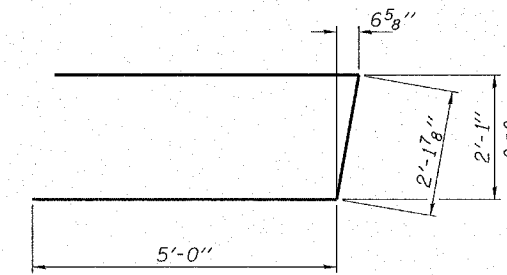
CONTRACT NO. 95430



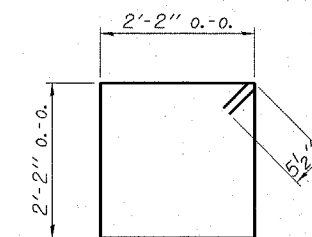
PLAN



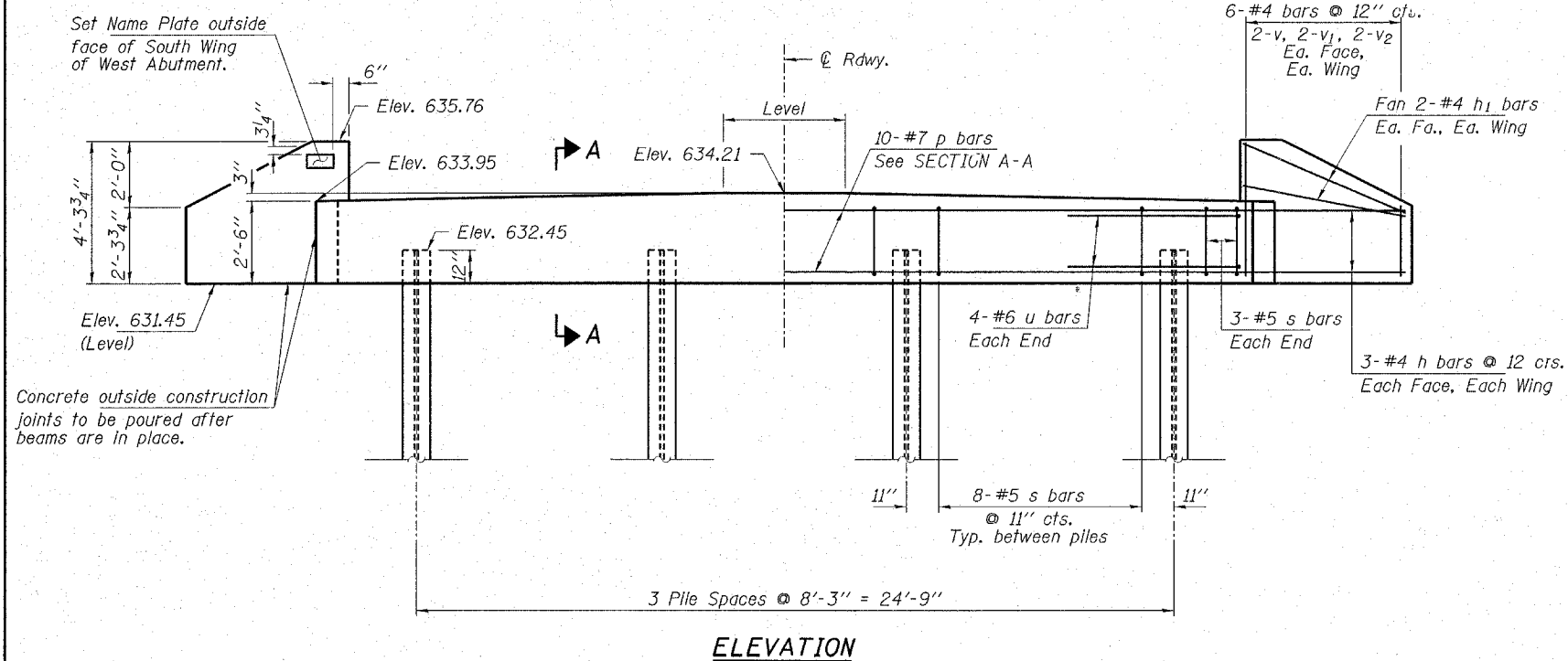
SECTION A-A



BAR u



BAR s



ELEVATION

Note: Extend h bars into abut. cap.

BILL OF MATERIAL - 2 ABUTS.

BAR	NO.	SIZE	LENGTH	SHAPE
h	24	#4	5'-9"	—
h <sub>1</sub>	16	#4	4'-9"	—
p	20	#7	29'-4"	—
s	60	#5	9'-7"	□
u	16	#6	12'-2"	U
v	16	#4	4'-0"	—
v <sub>1</sub>	16	#4	3'-0"	—
v <sub>2</sub>	16	#4	2'-0"	—
Concrete Structures			Cu. Yd.	16.8
Reinforcement Bars			Pound	2,330
Steel Piles HP10x42			Foot	210
Test Pile Steel HP10x42			Each	1
Name Plates			Each	1

PILE DATA

Type.....Steel HP10x42  
 No. Req'd. (2 Abuts.).....8\*  
 Design Capacity @ W. Abut.....39 Tons/Pile  
 Design Capacity @ E. Abut.....34 Tons/Pile  
 Est. Length.....30 Feet/Pile

\* Includes one test pile to be driven in a permanent location at the West Abutment.

**HAMPTON, LENZINI & RENWICK, INC.**  
 CIVIL & STRUCTURAL ENGINEERS

3085 STEVENSON DRIVE, SUITE 201  
 SPRINGFIELD, ILLINOIS 62703  
 (217) 548-3400

ELGIN • SPRINGFIELD

PROJECT NUMBER: 12-72-0015-1 DATE: 07/12/06  
 DESIGNED: T.P.L. CHECKED: S.W.M. DRAWN: D.T.M.

**ABUTMENTS**  
 JONATHAN CREEK ROAD DISTRICT  
 SECTION 03-03127-00-BR  
 MOULTRIE COUNTY  
 STR. NO. 070-4333 / STATION 9+95