

RTE. NO.	SECTION	COUNTY	TOTAL SHEETS
T.R. 34	05-07157-00-BR	MACON	11
FED. ROAD DIST. NO.	ILLINOIS	PROJECT: BROS-115(59)	

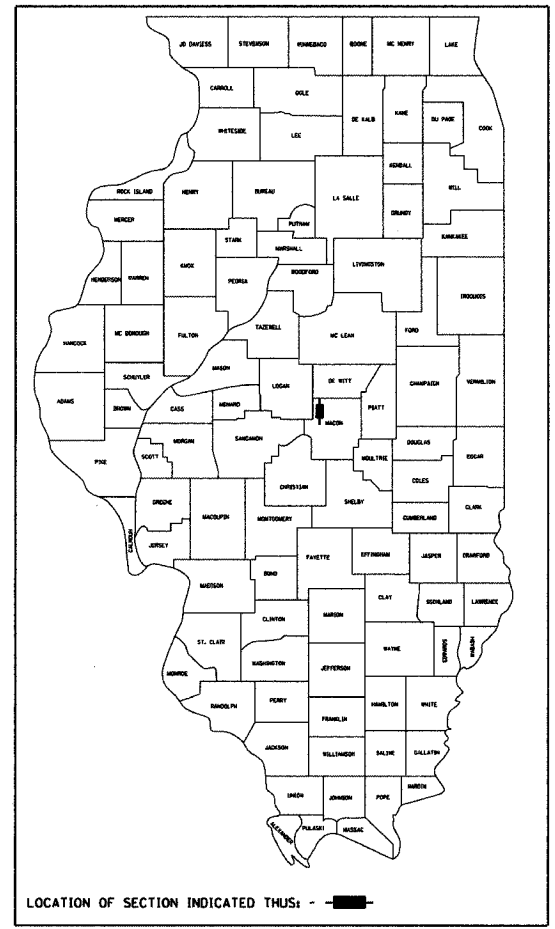
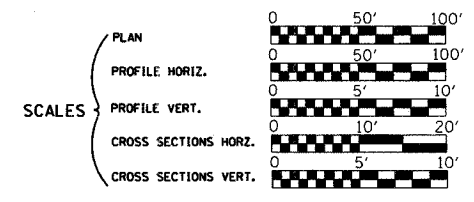
CONTRACT NO. 95494

INDEX OF SHEETS

- 1 Cover Sheet
- 2 Summary of Quantities, General Notes, and Typical Sections
- 3 Plan and Profile
- 4 Horizontal Layout
- 5-6 Station Cross Sections
- 7-11 Bridge Plans

STATE OF ILLINOIS
DEPARTMENT OF TRANSPORTATION
DIVISION OF HIGHWAYS
**PLANS FOR PROPOSED
LOCAL AGENCY IMPROVEMENT**

LIST OF STANDARDS	
Standard 000001-04	Standard symbols, abbreviations and patterns
Standard 280001-03	Temporary erosion control systems
Standard 515001-02	Name plate for bridges
Standard 635006-02	Reflective and Terminal Marker Placement
Standard 701011-01	Off-road moving operations, 2-l, 2-w, day only, for speeds > 45 mph
Standard 701301-02	Lane closure, 2-l, 2-w, short time operations
Standard 702001-06	Traffic control devices
Standard BLR-21-6	Typical application of traffic control devices for Construction on Rural Local Highways
Standard BLR-22-4	Typical application of traffic control devices 2-l, 2-w, rural, Road closed to Thru Traffic



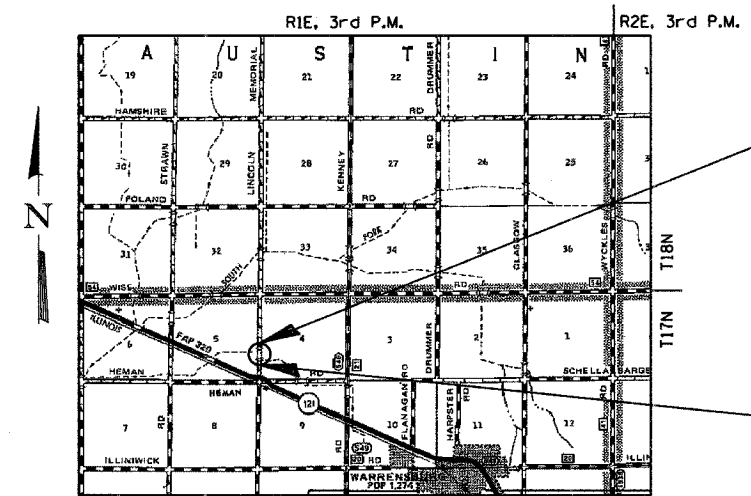
HIGHWAY BRIDGE PROGRAM
T.R. 34 OVER UNNAMED DRAINAGE DITCH
SECTION 05-07157-00-BR
MACON COUNTY
PROJECT BROS-115(59)
C-97-025-07

ROADWAY CLASSIFICATION: LOCAL ROAD, (NON-URBAN)
2027 ADT = 75
DESIGN SPEED: 30 MPH
DESIGN GUIDELINES: RURAL
VARIANCES GRANTED: NONE
COMMITMENTS: NONE

JOINT UTILITY LOCATING INFORMATION FOR EXCAVATORS
J.U.L.I.E. Telephone No. Toll Free 1-800-892-0123

CONTRACT NO. : 95494

URS
345 EAST ASH AVENUE, SUITE B
DECATUR, ILLINOIS 62526
PH. 217-875-4800



IMPROVEMENT ENDS
STA. 17+40.00

EXIST. STR. NO. 058-3101
PROP. STR. NO. 058-3380

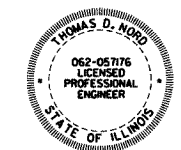
IMPROVEMENT BEGINS
STA. 12+65.00

IMPROVEMENT CONSISTS OF THE REMOVAL OF A SINGLE SPAN CONCRETE DECK ON WF BEAM SUPERSTRUCTURE ON CLOSED CONCRETE ABUTMENTS WITH CONCRETE WINGWALLS, 0-0 DECK = 19'-6", BK.-BK. ABUTMENTS = 27'-0" AND THE CONSTRUCTION OF A SINGLE SPAN PRECAST PRESTRESSED CONCRETE DECK BEAM BRIDGE ON CONCRETE SPILL THRU ABUTMENTS, TOTAL LENGTH = 49'-10 1/8", WIDTH = 24'-0" O.-O. DECK AND NECESSARY APPROACH ROADWAY WORK.

LAYOUT

Approximate Scale: miles

Total and Net Length of Improvement 475.00 Feet = 0.090 Miles



EXP. 11/30/07

Thomas D. Wood
Illinois Professional No. 57176

APPROVED	<u>OCTOBER 19</u> 20 <u>06</u>	<i>Tom B.</i>	COUNTY ENGINEER
PASSED	<u>11/28</u> 20 <u>06</u>	<i>Maureen J. Kautz</i>	DISTRICT SEVEN ENGINEER OF LOCAL ROADS & STREETS
Releasing For Bid Based on Limited Review	<u>11/28</u> 20 <u>06</u>	<i>Christie M. Keenan</i>	DEPUTY DIRECTOR OF HIGHWAYS, REGION FOUR ENGINEER

STATE OF ILLINOIS
DEPARTMENT OF TRANSPORTATION

10/18/2006
Date