

STATE OF ILLINOIS  
DEPARTMENT OF TRANSPORTATION

PLANS FOR PROPOSED  
HBP AND STP-RURAL PROJECTS

FAS RTE 2789 (C.H. 16) BRUBAKER ROAD  
SECTION 00-00115-00-BR  
OVER CROOKED CREEK &  
SECTION 00-00115-01-BR  
OVER BRANCH TO CROOKED CREEK  
PROJECT NO. RS-BRS-2789( 106 )  
MARION COUNTY  
C-98-312-07

ROUTE	SECTION	COUNTY	TOTAL SHEETS	SHEET NO.
CH 16	00-00115-00-BR 00-00115-01-BR	MARION	14	1
		ILLINOIS	FEDERAL AID PROJECT	
CONTRACT NO. 97287				

INDEX OF SHEETS

- COVER SHEET
- SUMMARY OF QUANTITIES AND TYPICAL SECTIONS
- BRANCH TO CROOKED CREEK - SECTION 00-00115-01-BR
- PLAN AND PROFILE OF ROADWAY
- CROSS SECTIONS OF ROADWAY
- GENERAL PLAN AND ELEVATION
- PRECAST PRESTRESSED CONCRETE DECK BEAM DETAILS
- STEEL RAILING, TYPE S1 DETAILS
- ABUTMENT DETAILS
- CROOKED CREEK - SECTION 00-00115-00-BR
- PLAN AND PROFILE OF ROADWAY
- CROSS SECTIONS OF ROADWAY
- GENERAL PLAN AND ELEVATION
- PRECAST PRESTRESSED CONCRETE DECK BEAM DETAILS
- STEEL RAILING, TYPE S1 DETAILS
- ABUTMENT DETAILS

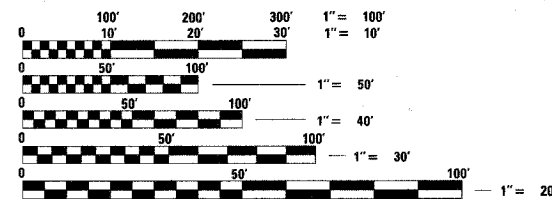
STANDARDS ARE INCLUDED IN PLANS AFTER SHEET NO. 14

000001-04	STANDARD SYMBOLS, ABBREVIATIONS AND PATTERNS
280001-03	TEMPORARY EROSION CONTROL SYSTEMS
515001-02	NAME PLATE FOR BRIDGES
630001-07	STEEL PLATE BEAM GUARD RAIL
631026-03	TRAFFIC BARRIER TERMINAL, TYPE 5 & 5A
635006-02	REFLECTOR AND TERMINAL MARKER PLACEMENT
702001-06	TRAFFIC CONTROL DEVICES
BLR 21-6	TYPICAL APPLICATION OF TRAFFIC CONTROL DEVICES FOR CONSTRUCTION ON RURAL LOCAL HIGHWAYS

SOIL BORINGS (SEE SPECIFICATIONS)

DESIGN CLASSIFICATION: RURAL MINOR COLLECTOR

ADT<sub>2002</sub> : 350  
ADT<sub>2027</sub> : 500  
DESIGN SPEED - 40 MPH



FULL SIZE PLANS HAVE BEEN PREPARED USING STANDARD ENGINEERING SCALES, REDUCED SIZED PLANS WILL NOT CONFORM TO STANDARD SCALES. IN MAKING MEASUREMENTS ON REDUCED PLANS, THE ABOVE SCALES MAY BE USED.

J.U.L.I.E.  
JOINT UTILITY LOCATING INFORMATION FOR EXCAVATORS  
1-800-892-0123 Website: <http://www.illinois1call.com>

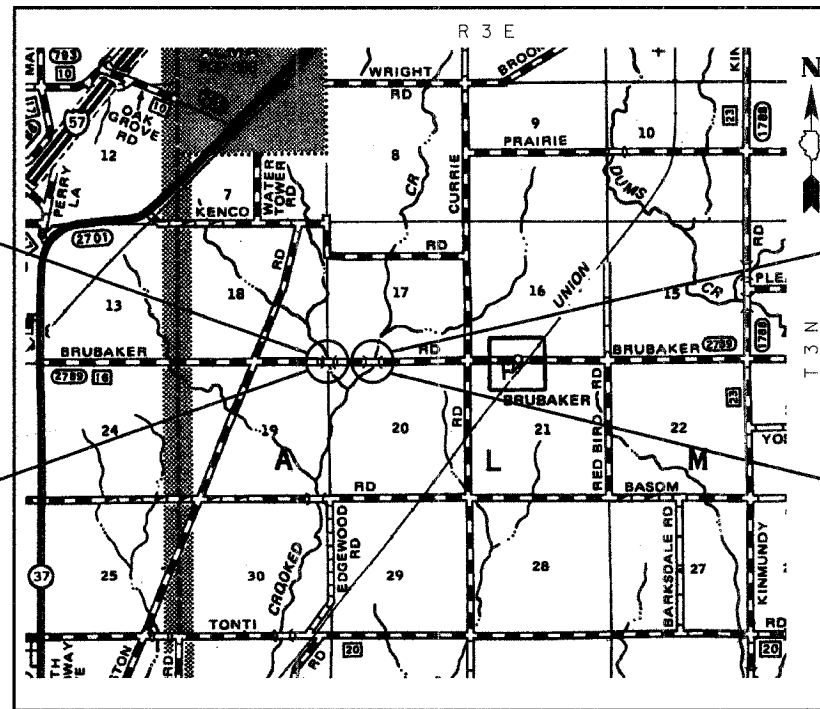
STP FUNDS

SECTION BEGINS  
STA. 9+58.17

SECTION 00-00115-01-BR

INCLUDES THE CONSTRUCTION OF A SINGLE SPAN PRECAST PRESTRESSED CONCRETE DECK BEAM BRIDGE CARRYING CH 16 OVER BRANCH TO CROOKED CREEK, 63'-8" BK TO BK ABUTMENTS. NO SKEW. EXISTING STRUCTURE NO. 061-3017 PROPOSED STRUCTURE NO. 061-3301

SECTION ENDS  
STA. 10+41.83



HBP FUNDS

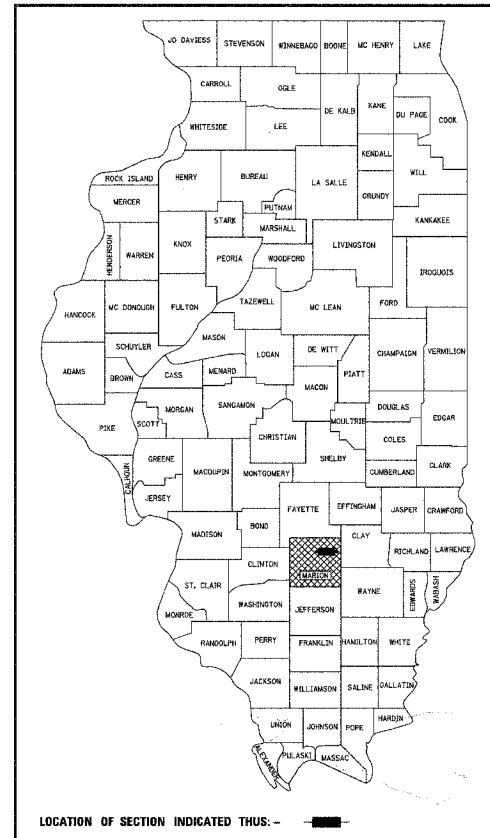
SECTION BEGINS  
STA. 24+40.65

SECTION 00-00115-00-BR

INCLUDES THE CONSTRUCTION OF A SINGLE SPAN PRECAST PRESTRESSED CONCRETE DECK BEAM BRIDGE CARRYING CH 16 OVER CROOKED CREEK, 61'-5" BK TO BK ABUTMENTS. 20° AH. LT. SKEW. EXISTING STRUCTURE NO. 061-3018 PROPOSED STRUCTURE NO. 061-3287

SECTION ENDS  
STA. 25+29.35

LOCATION: NEAR THE NE CORNER, SECTION 19, T3N, R3E, 3RD P.M.  
NET LENGTH OF SECTION 00-00115-01-BR: 83.66 FT = 0.016 MI  
LOCATION: NEAR THE NE CORNER, NW 1/4, SECTION 20, T3N, R3E, 3RD P.M.  
NET LENGTH OF SECTION 00-00115-00-BR: 88.70 FT = 0.017 MI



STATE OF ILLINOIS  
DEPARTMENT OF TRANSPORTATION

APPROVED October 13, 2006  
*Mary C. Lewis*  
MARION COUNTY, COUNTY ENGINEER

PASSED Nov 9, 2006  
*James Oberholser*  
DISTRICT EIGHT-ENGINEER OF LOCAL ROADS & STREETS

RELEASING FOR BID  
BASED ON LIMITED  
REVIEW Mary C. Lewis, 2006  
11-9-06  
DEPUTY DIRECTOR OF HIGHWAYS, REGION FIVE ENGINEER



*Gary L. Hahn* 10-11-06  
GARY L. HAHN  
CENTRALIA, ILLINOIS  
ILLINOIS LICENSED PROFESSIONAL  
ENGINEER NO. 62-42606  
EXPIRES NOV. 30, 2007

**RHUTASEL and ASSOCIATES, INC.**  
CONSULTING ENGINEERS • LAND SURVEYORS  
CENTRALIA, ILLINOIS FREEBURG, ILLINOIS  
ILLINOIS DESIGN FIRM LICENSE NO. 184-000287

Sheet  
1  
of 14  
Job No. 50705  
Job No. 50805