

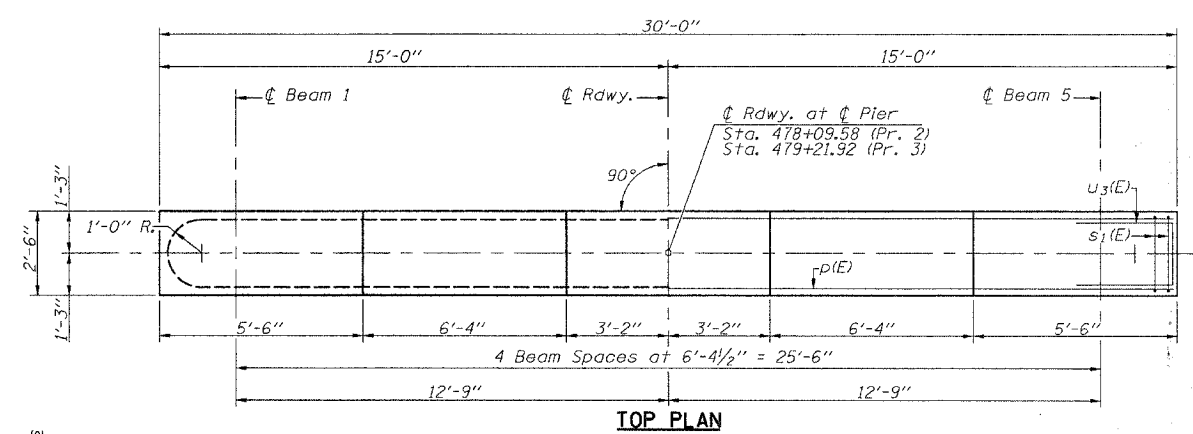
ROUTE NO.	SECTION	COUNTY	TOTAL SHEETS	SHEET NO.
F.A.P. 731		GREENE	30	22
FED. ROAD DIST. NO.		ILLINOIS	FED. AID PROJECT	
FEDERAL AID PROJECT				

CONTRACT NO. 97289
 01-00071-00-BR
 Sheet No. 18
 of 23 Sheets

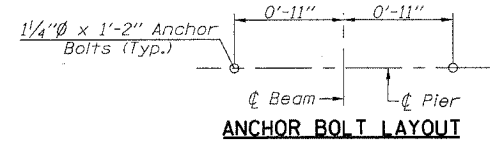
PILE DATA

Pier No. 2 Pier No. 3
 Steel HP 10x42 Steel HP 10x42
 Nominal Required Bearing: 335 kips 335 kips
 Allowable Resistance Available: Driven to refusal Driven to refusal
 Estimated Pile Length: 28' 26'
 Number of Production: 15 15
 Number of Test Piles: 1 1

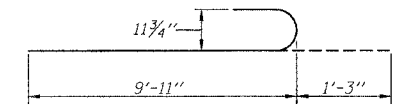
Note: The Steel H-piles shall be according to AASHTO M 270, Grade 50.
 The Test Piles shall be driven to 110 percent of the nominal required bearing indicated in the pile data information.



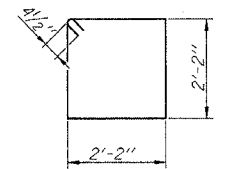
TOP PLAN



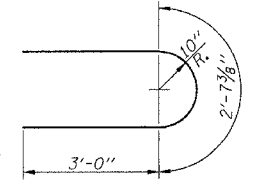
ANCHOR BOLT LAYOUT



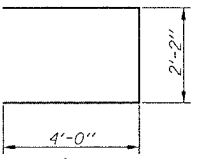
BAR n(E)



BAR s1(E)



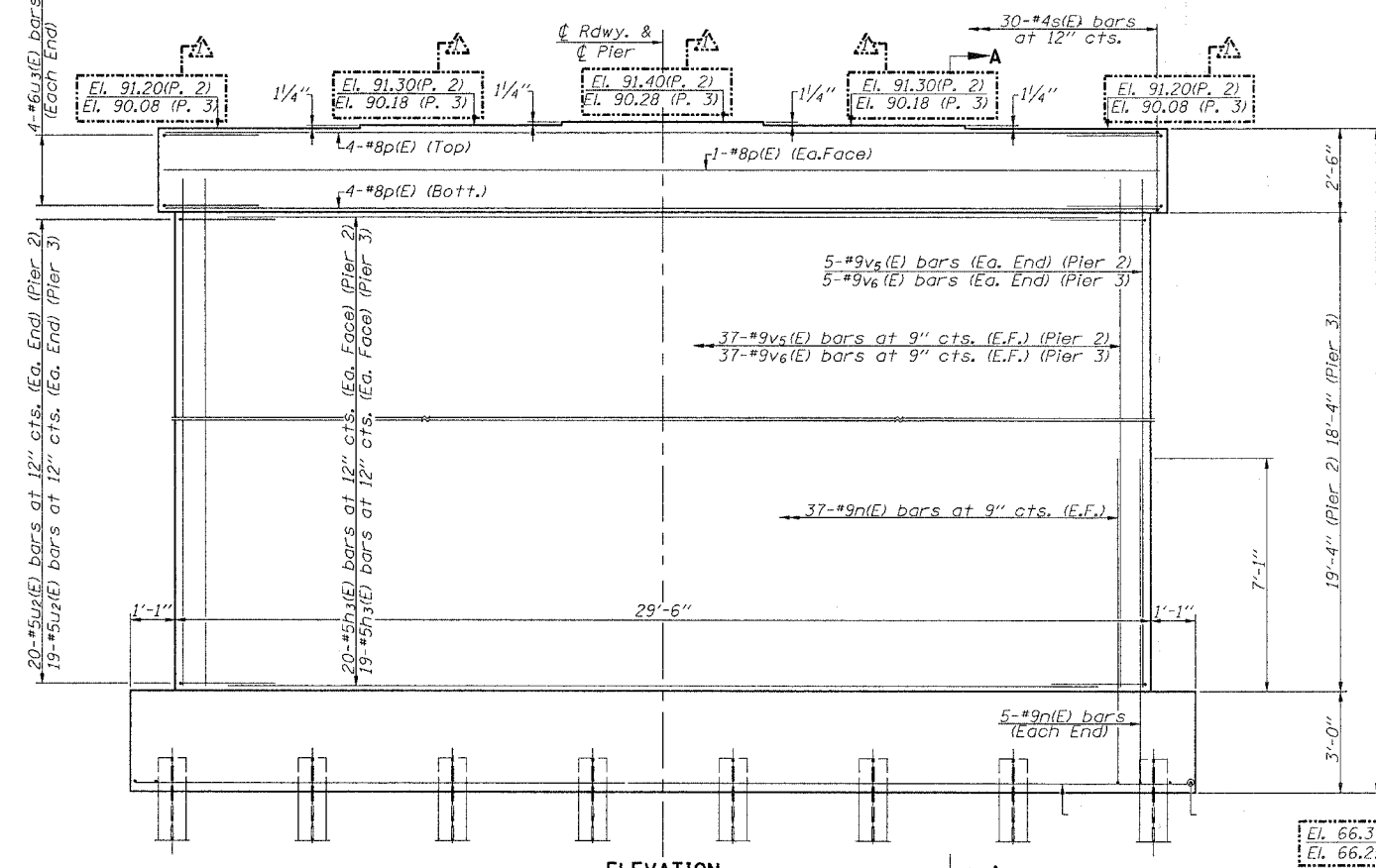
BAR u2(E)



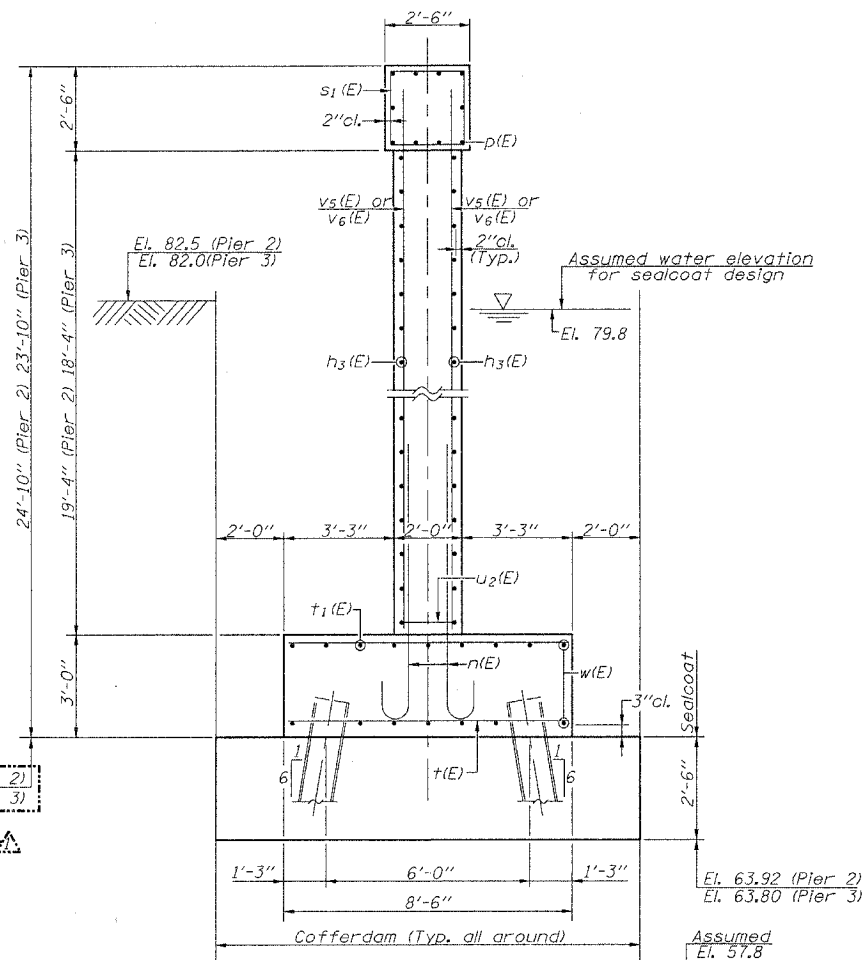
BAR u3(E)

**TWO PIERS
 BILL OF MATERIAL**

BAR	NO.	SIZE	LENGTH	SHAPE
h3(E)	78	#5	27'-6"	—
n(E)	168	#9	11'-2"	U
p(E)	20	#8	29'-8"	—
s1(E)	60	#4	9'-5"	□
t(E)	92	#8	8'-2"	—
t1(E)	64	#5	8'-2"	—
u2(E)	156	#5	8'-8"	U
u3(E)	16	#6	10'-2"	U
v5(E)	84	#9	21'-0"	—
v6(E)	84	#9	20'-0"	—
w(E)	36	#5	31'-4"	—
Concrete Structures			Cu. Yd.	155.3
Reinforcement Bars, Epoxy Coated			Pound	27345
Furnishing Steel Piles HP 10x42			Foot	810
Driving Piles			Foot	810
Test Pile, Steel HP 10x42			Each	2
Cofferdam Excavation			Cu. Yd.	607
Cofferdam (Pier No. 2)			Each	1
Cofferdam (Pier No. 3)			Each	1
Seal Coat Concrete			Cu. Yd.	82.6



ELEVATION

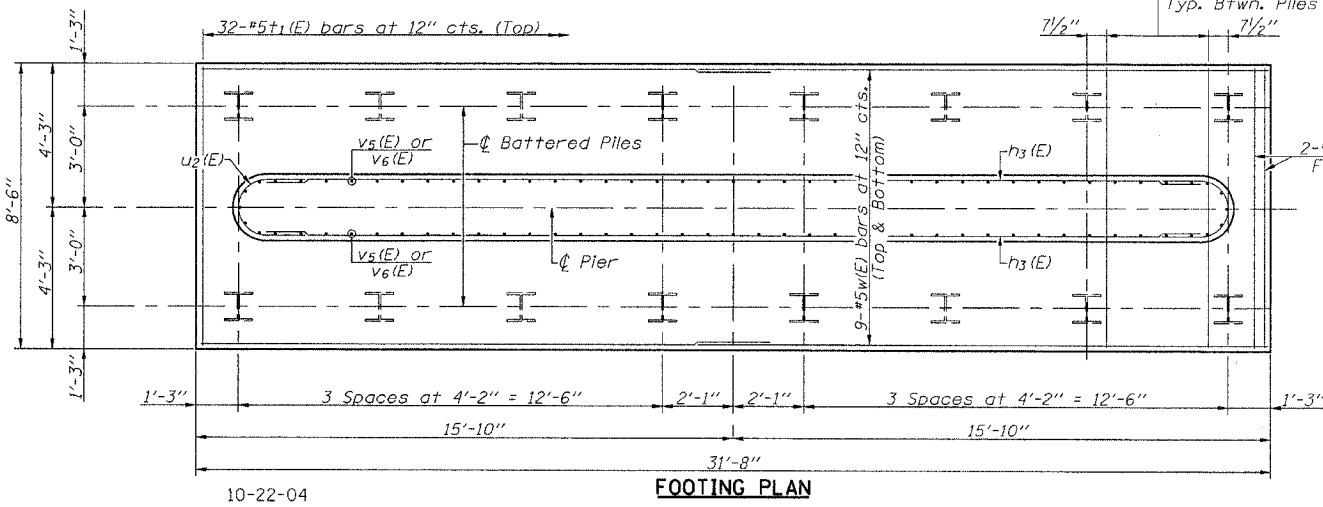


SECTION A-A

MIN. BAR LAPS

- #5 Bars = 2'-2"
- #6 Bars = 2'-6"
- #9 Bars = 6'-11"

Notes:
 Pour steps monolithically with pier.
 All edges shall have standard 3/4 inch chamfers except as noted.
 Reinforcement bars designated (E) shall be epoxy coated.



FOOTING PLAN

PIERS 2 & 3
 F.A.S. 731 - C.H. 2
 OVER APPLE CREEK
 SECTION 01-00071-00-BR
 GREENE COUNTY

Revised
 1-5-07

FILE NAME: STRUCTURE PLANS REV. 12/13/06

10-22-04