

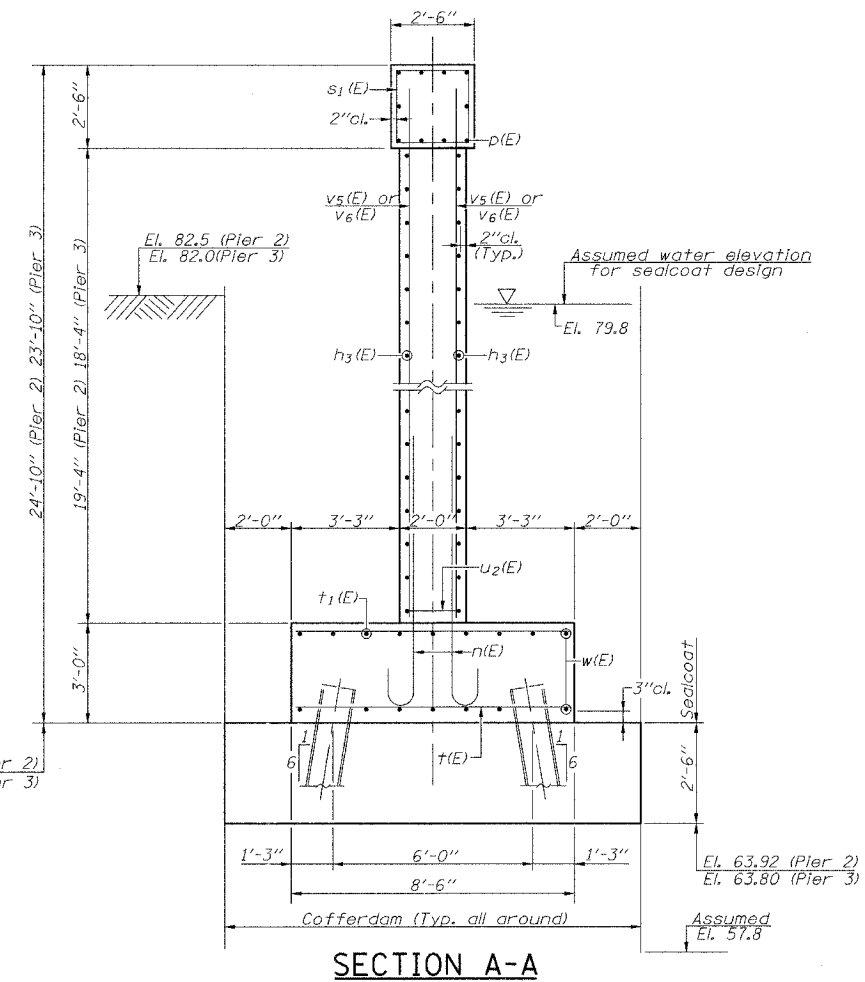
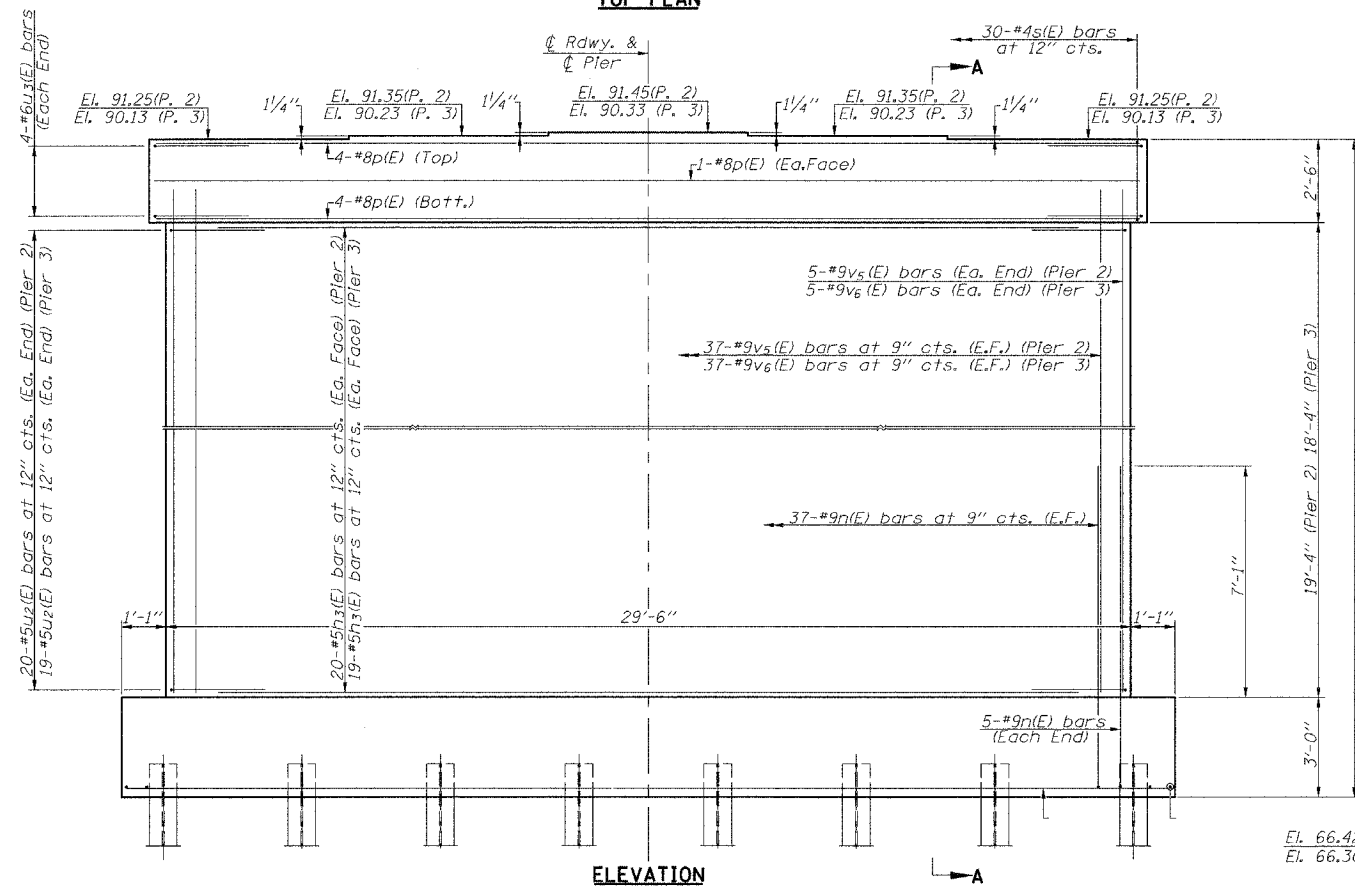
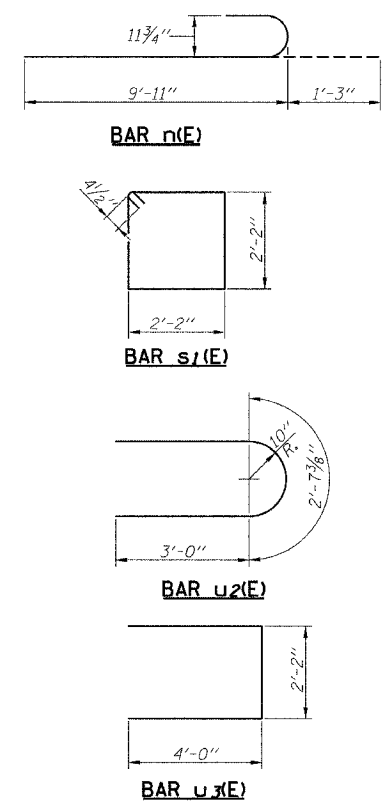
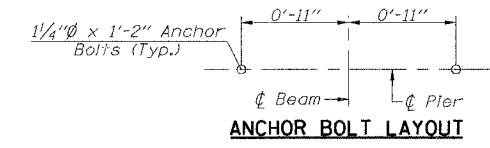
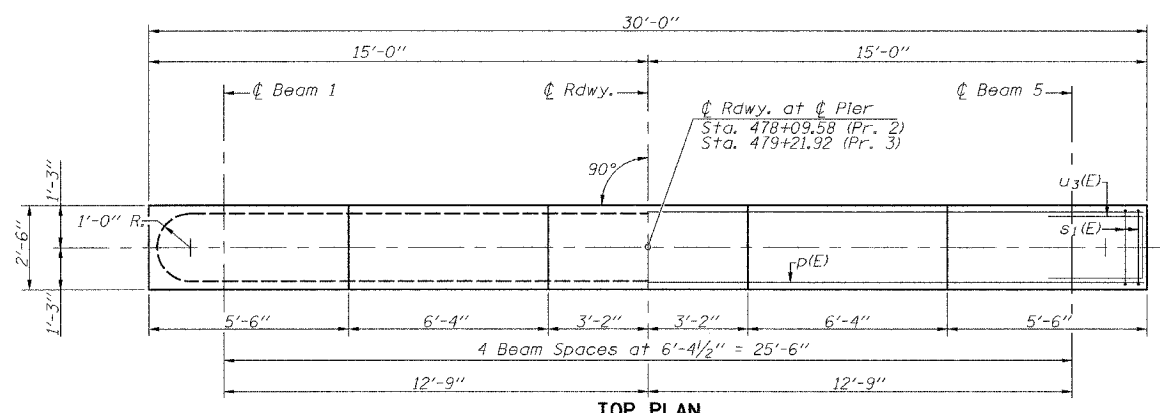
ROUTE NO.	SECTION	COUNTY	TOTAL SHEETS	SHEET NO.
F.A.P. 731	*	GREENE	30	22
FED. ROAD DIST. NO.	ILLINOIS	FED. AID PROJECT		
FEDERAL AID PROJECT				

01-00071-00-BR
CONTRACT NO. 97289 Sheet No. 18 of 23 Sheets

PILE DATA

Pier No. 2 Pier No. 3
 Steel HP 10x42 Steel HP 10x42
 Nominal Required Bearing: 335 kips 335 kips
 Allowable Resistance Available: Driven to refusal Driven to refusal
 Estimated Pile Length: 28' 26'
 Number of Production: 15 15
 Number of Test Piles: 1 1

Note: The Steel H-piles shall be according to AASHTO M 270, Grade 50.
 The Test Piles shall be driven to 110 percent of the nominal required bearing indicated in the pile data information.



TWO PIERS BILL OF MATERIAL

BAR	NO.	SIZE	LENGTH	SHAPE
h3(E)	78	#5	27'-6"	—
n(E)	168	#9	11'-2"	⌋
p(E)	20	#8	29'-8"	—
s1(E)	60	#4	9'-5"	□
t(E)	92	#8	8'-2"	—
t1(E)	64	#5	8'-2"	—
u2(E)	156	#5	8'-8"	⌋
u3(E)	16	#6	10'-2"	⌋
v5(E)	84	#9	21'-0"	—
v6(E)	84	#9	20'-0"	—
w(E)	36	#5	31'-4"	—

Concrete Structures	Cu. Yd.	155.3
Reinforcement Bars, Epoxy Coated	Pound	27345
Furnishing Steel Piles HP 10x42 Foot	Foot	810
Driving Piles	Foot	810
Test Pile, Steel HP 10x42	Each	2
Cofferdam Excavation	Cu. Yd.	607
Cofferdam (Pier No. 2)	Each	1
Cofferdam (Pier No. 3)	Each	1
Seal Coat Concrete	Cu. Yd.	82.6

MIN. BAR LAPS

- #5 Bars = 2'-2"
- #6 Bars = 2'-6"
- #9 Bars = 6'-11"

Notes:
 Pour steps monolithically with pier.
 All edges shall have standard 3/4" chamfers except as noted.
 Reinforcement bars designated (E) shall be epoxy coated.

