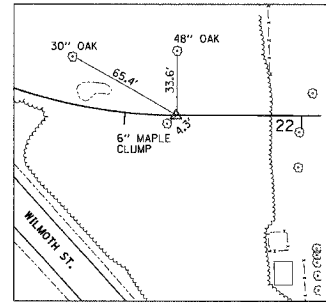
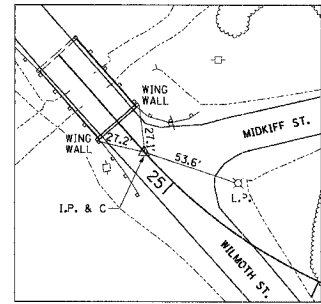


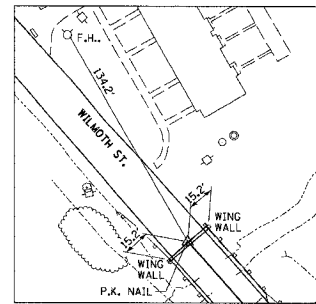
FAP RTE.	SECTION	COUNTY	TOTAL SHEETS	SHEET NO.
331	3-2, 8X-1, 4-2	SALINE	233	29
STA.		TO STA.		
FED. ROAD DIST. NO.		ILLINOIS FED. AID PROJECT		



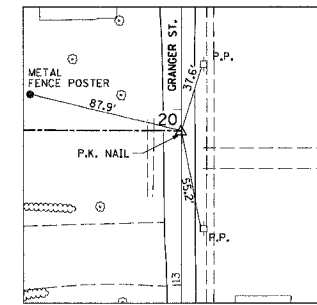
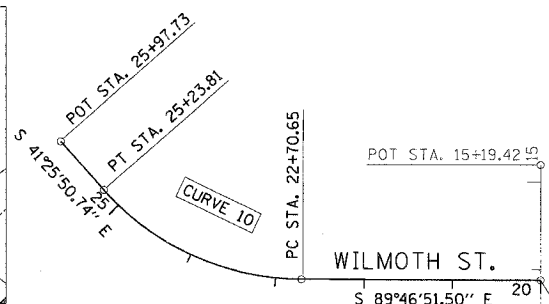
ALIGNMENT TIE POINT
STA. 22+70.65 WILMOTH ST.



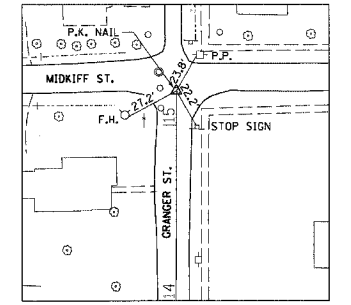
ALIGNMENT TIE POINT
STA. 25+23.81 WILMOTH ST.



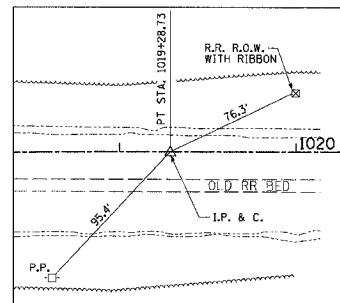
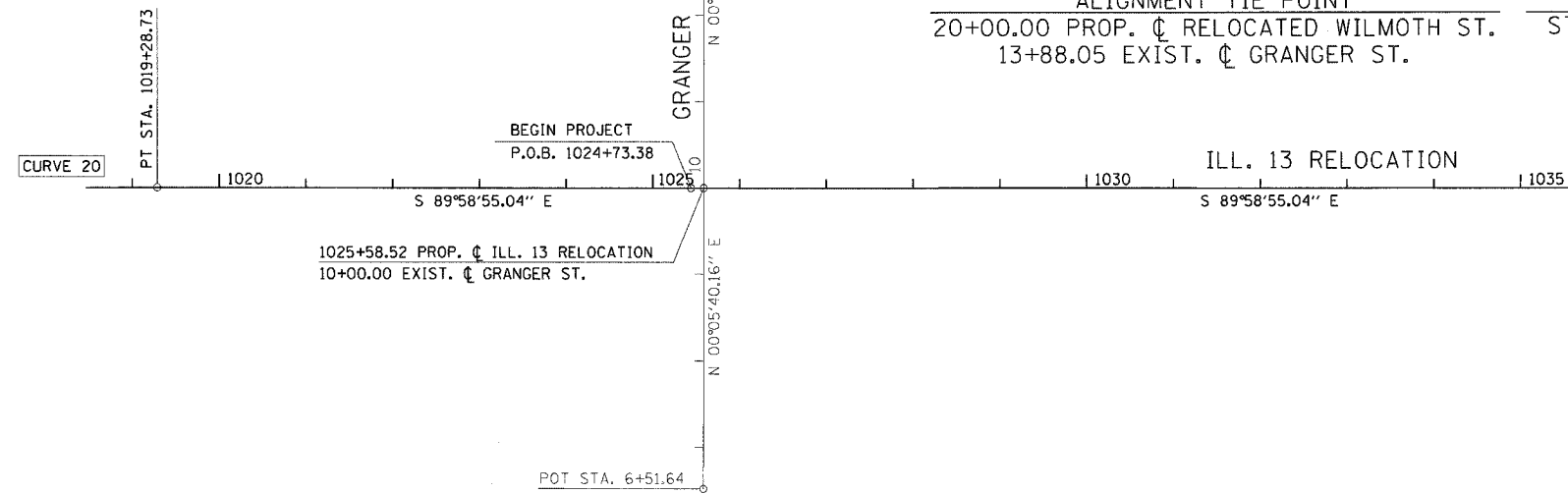
ALIGNMENT TIE POINT
STA. 25+97.73 WILMOTH ST.



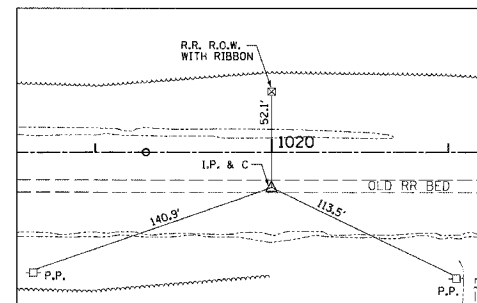
ALIGNMENT TIE POINT
20+00.00 PROP. C RELOCATED WILMOTH ST.
13+88.05 EXIST. C GRANGER ST.



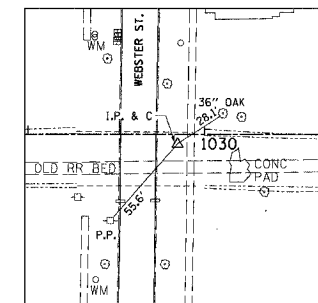
ALIGNMENT TIE POINT
STA. 15+19.42 GRANGER ST.



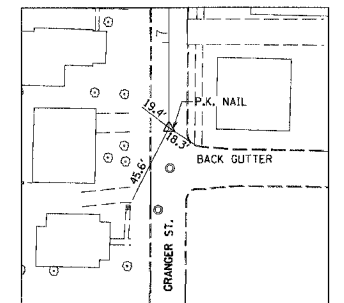
ALIGNMENT TIE POINT
STA. 1019+28.73 ILL. 13 RELOCATION



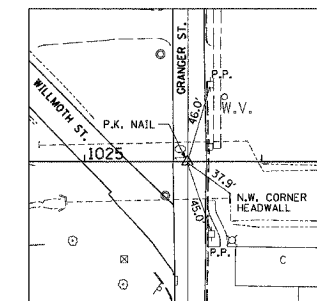
ALIGNMENT TIE POINT
STA. 1020+00, 20.00' RT. ILL. 13 RELOCATION



ALIGNMENT TIE POINT
STA. 1029+85, 5.00' RT. ILL. 13 RELOCATION



ALIGNMENT TIE POINT
STA. 6+51.64 GRANGER ST.



ALIGNMENT TIE POINT
STA. 1025+58.52 PROP C ILL. 13 RELOCATION
STA. 10+00.00 GRANGER ST.

**U. S. ROUTE 45
ALIGNMENT & TIES
STA. 1024 + 73.38 TO STA. 1038 + 00.00
ILL. 13 RELOCATION
INCL. GRANGER ST. AND
WILMOTH ST.**

COORDINATE DATA

STATION	NORTHING	EASTING	REMARKS
20+00.00	392,473.90	923,069.24	P.O.T. WILMOTH ST.
24+05.32	392,475.45	922,663.92	P.I. CURVE 10 WILMOTH ST.
22+70.65	392,474.94	922,798.59	P.C. CURVE 10 WILMOTH ST.
25+23.81	392,576.42	922,574.81	P.T. CURVE 10 WILMOTH ST.
25+97.73	392,631.85	922,525.89	P.O.T. WILMOTH ST.
6+51.64	391,737.50	923,068.02	P.O.T. GRANGER ST.
15+19.42	392,605.27	923,069.45	P.O.T. GRANGER ST.
1019+28.73	392,086.05	922,438.81	P.T. CURVE 20 ILL. 13 RELOCATION
1020+00.00	392,066.03	922,510.07	
1025+58.52	392,085.85	923,068.60	
1029+58.00	392,080.72	923,495.07	

CURVE DATA

CURVE	P.I. STATION	Δ	D	T	L	R	M	CHORD
10	24+05.32	48° 21' 01"	19° 05' 55"	134.67'	253.16'	300.00'	26.31'	245.72'

DRAWN BY
CHECKED BY

PROJECT: ILL. 13 RELOCATION
SHEET: 29 OF 233