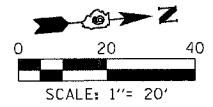
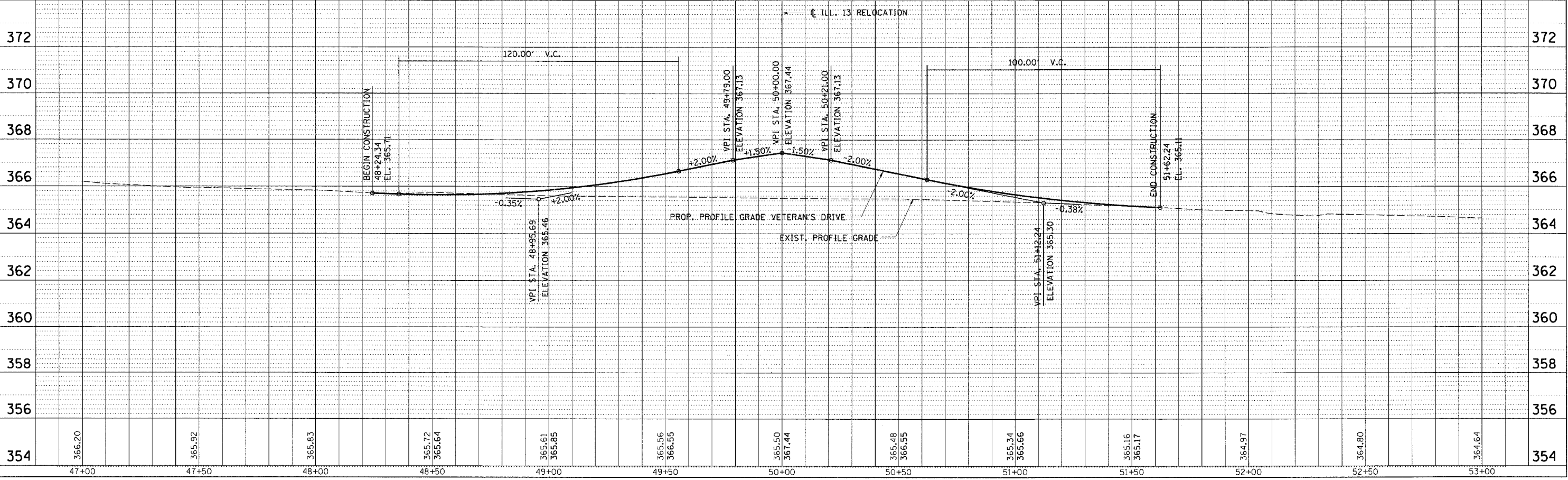
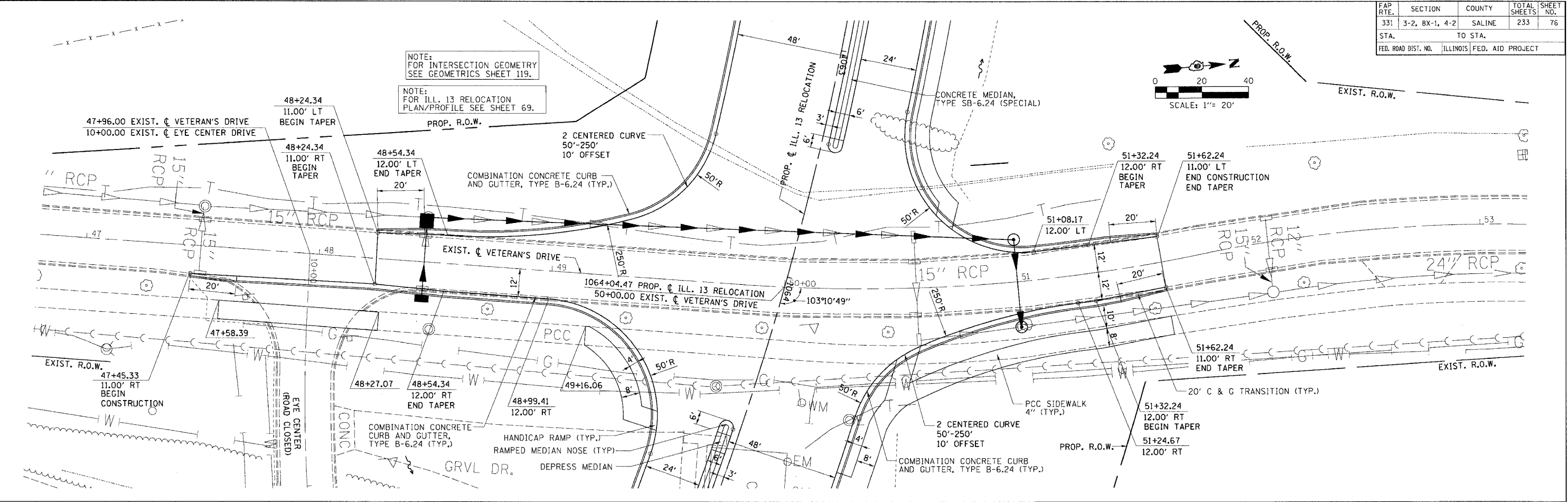


FAP R.T.E.	SECTION	COUNTY	TOTAL SHEETS	SHEET NO.
331	3-2, 8X-1, 4-2	SALINE	233	76
STA. TO STA.		TO STA.		
FED. ROAD DIST. NO. ILLINOIS FED. AID PROJECT				



NOTE:
FOR INTERSECTION GEOMETRY
SEE GEOMETRICS SHEET 119.

NOTE:
FOR ILL. 13 RELOCATION
PLAN/PROFILE SEE SHEET 69.



PLAN PROFILE - VETERAN'S DRIVE - STA. 47+45.33 TO STA. 51+62.24

DATE: 3/01
BY: [Signature]
CHECKED BY: [Signature]
DATE: 3/01
BY: [Signature]
CHECKED BY: [Signature]

PLAN & PROFILE CHECKED BY: [Signature]
DRAINAGE CHECKED BY: [Signature]
DRAWN BY: [Signature]

DATE: 3/01
BY: [Signature]
CHECKED BY: [Signature]
DATE: 3/01
BY: [Signature]
CHECKED BY: [Signature]

PROJECT: PROJ3526/ROADWAY/COMMON/
FILE: P3526.dgn
DATE: 10/9/2006 12:27:28 PM