

STATE OF ILLINOIS
DEPARTMENT OF TRANSPORTATION

ROUTE NO.	SECTION	COUNTY	TOTAL SHEETS	SHEET	SHEET NO. 1
		White	7	4	2 SHEETS
FED. ROAD DIST. NO. 7		ILLINOIS		FED. AID PROJECT	

Contract Number: 98988

GENERAL NOTES

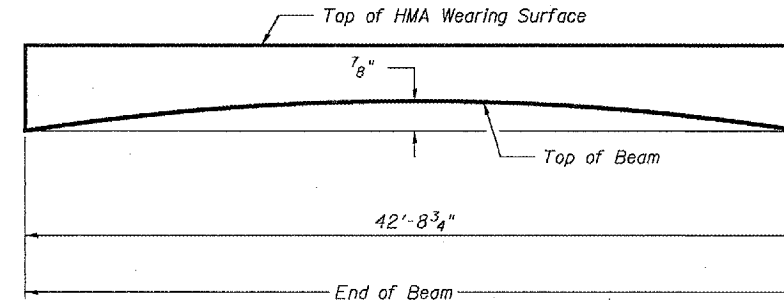
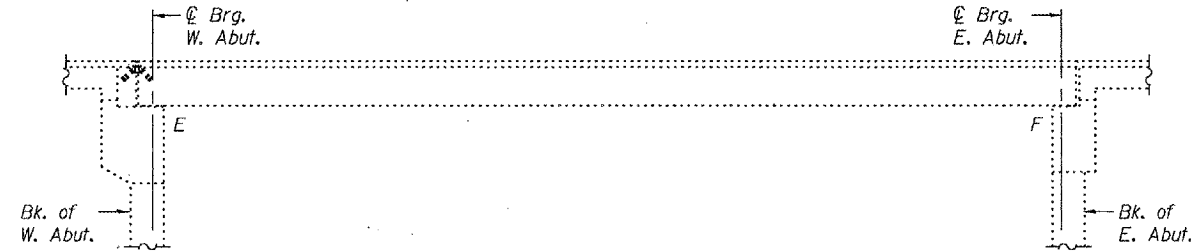
Plan dimensions and details relative to existing plans are subject to routine variations. The Contractor shall field verify existing dimensions and details affecting new construction and make necessary approved adjustments prior to construction or ordering of materials. Such variations shall not be cause for additional compensation for a change in scope of the work, however, the Contractor will be paid for the quantity actually furnished based upon the unit price bid for the work.

Any damage done to the bridge during beam removal shall be repaired by the Contractor. Cost to be included in the cost of "Removal of Existing P.P.C. Deck Beams".

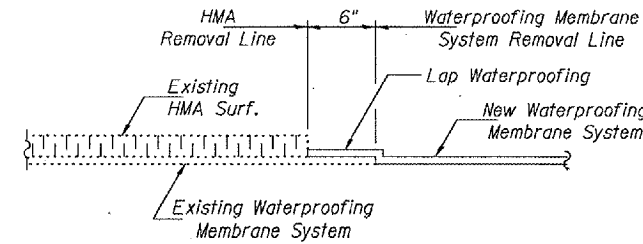
The top surface of the beams shall be finished according to the IDOT Manual for Fabrication of Precast Prestressed Concrete Products. Temporary concrete barrier shall only be anchored into the overlay and not the PPC Deck Beams.

All structural steel shall be shop painted with the inorganic zinc rich primer per AASHTO M300, Type 1. Cost included with Precast Prestressed Concrete Deck Beams.

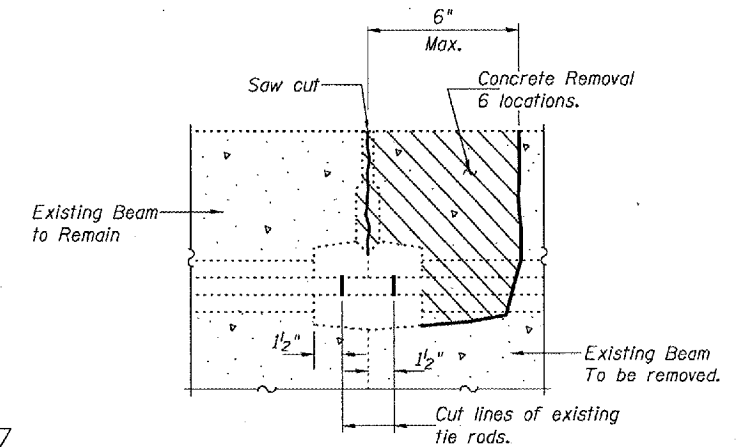
The existing structural steel coating contains lead. The Contractor should take appropriate precautions to deal with the presence of lead on this project.



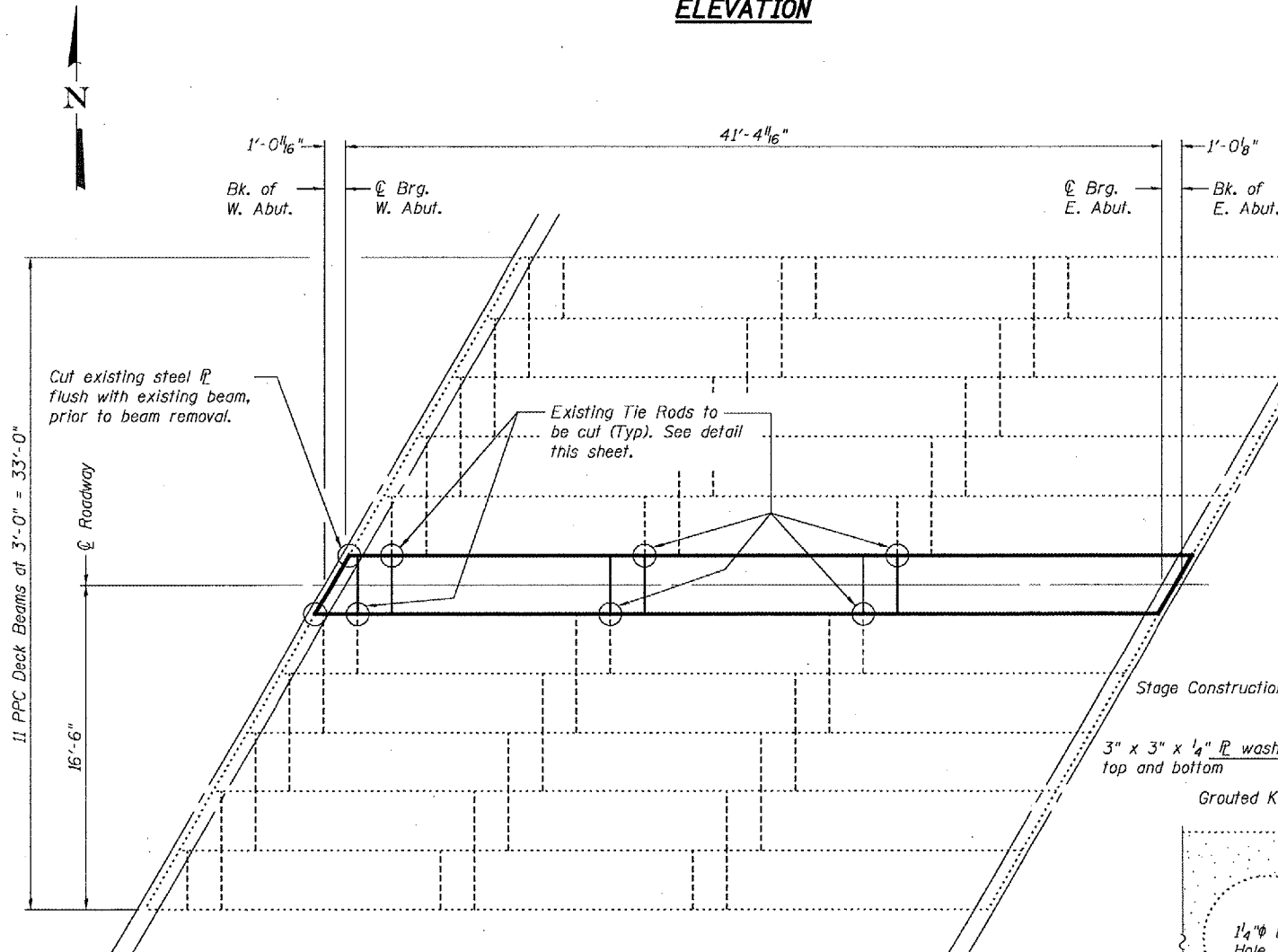
ANTICIPATED INITIAL CAMBER DIAGRAM



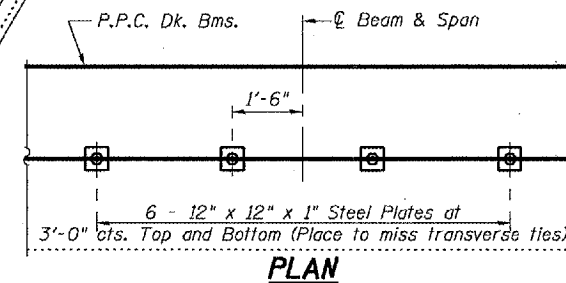
WATERPROOFING TREATMENT



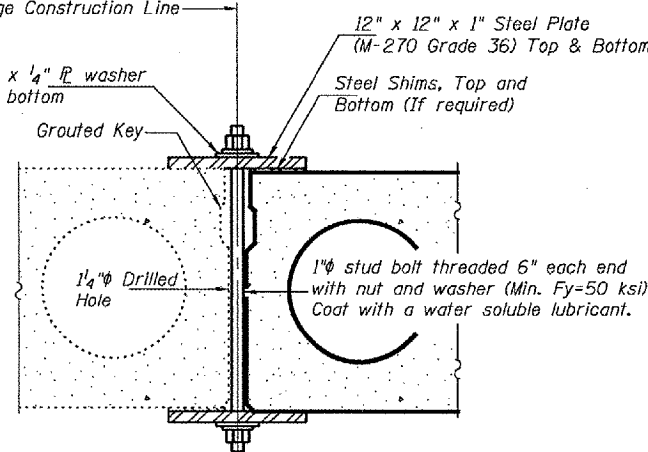
BEAM REMOVAL DETAIL AT TRANSVERSE TIES



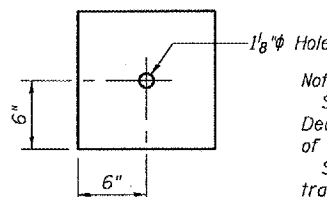
PLAN



PLAN

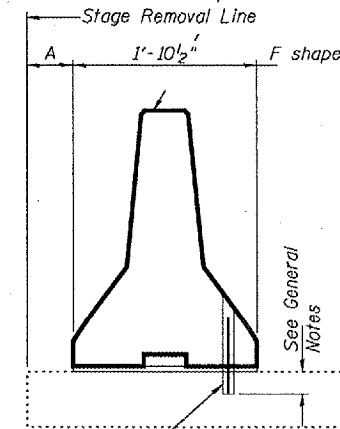


SECTION



CLAMPING PLATE

Temporary Concrete Barrier See Standard 704001



EXISTING SLAB SECTIONS THRU SLAB

Drill 1/4" ϕ Holes for 1" ϕ x 10" dowel bars. Traffic side only. Cost included with Temporary Concrete Barrier. No anchorage required if A > 3'-6".

TOTAL BILL OF MATERIAL

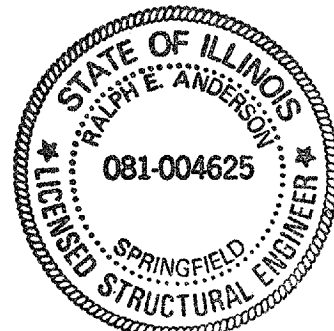
ITEM	UNIT	QUANTITY
Precast Prestressed Concrete Deck Beams (21" Depth)	Sq. Ft.	125
Hotmix Asphalt Surface Removal	Sq. Yd.	19.2
Removal of Existing PPC Deck Beams	Sq. Ft.	128
Concrete Superstructure	Cu. Yd.	0.1
Hotmix Asphalt Surface Course, Mix "C" N50	Tons	3.2
PC Mortar Fairing Course	Foot	86
Waterproofing Membrane System	Sq. Yd.	19.2
Concrete Removal	Cu. Yd.	0.1
Asbestos Bearing Pad Removal	Each	1

DESIGN STRESSES PRECAST UNITS

f'c = 5,000 psi
f'ci = 4,000 psi
f's = 270,000 psi (1/2" ϕ low lax strands)
f'si = 201,960 psi (1/2" ϕ low lax strands)

DESIGNED: *Alvin T. Holloway*
CHECKED: *Ated B. Lopez*
DRAWN: *[Signature]*
CHECKED: *ATH STB*

November 9, 2006
EXAMINED: *John A. Morris*
PASSED: *Ralph E. Anderson*
ENGINEER OF BRIDGES AND STRUCTURES



Expires: November 30, 2008

Notes:
Stage Construction of Precast Prestressed Concrete Deck Beams shall be according to Article 504.06(d) of the Standard Specifications.
See Roadway plans for Stage Construction traffic lane.
Cost is included with Precast Prestressed Concrete Deck Beams.

**PLAN AND ELEVATION
RT. 141 OVER CANE
CREEK TRIB.
WHITE COUNTY
SN 097-0037**