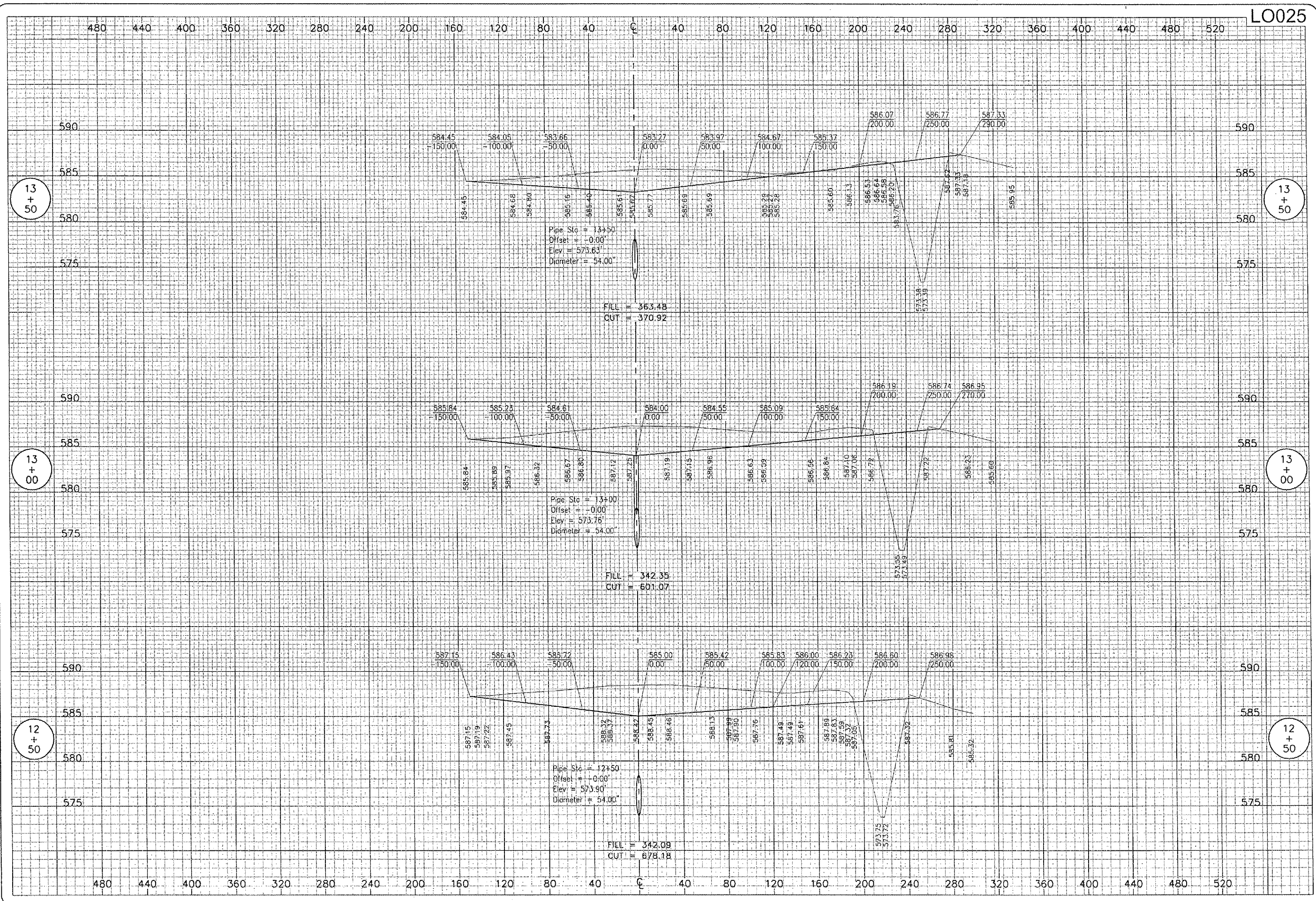


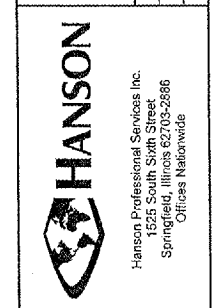
C:\C 22 2006 7:56 AM CAH
 A:\AIRPORTS\LOGAN\B13-060GN\AIRPORT\SHEETS\R-306XS.DWG - 12+50 - 13+50



DATE	REVISION	BY

LOGAN COUNTY AIRPORT
 LINCOLN, ILLINOIS
 I.L. PROJ.: AA-3545
 A.I.P. PROJ.: 3-17-0062-B13

NET Project No. 813-060GN-0800	Drawn R-306XS.DWG	Scale 1" = 40' H / 5' V	Date 10/13/06
LAYOUT	ECC	10/13/06	
DRAWN	CCC	10/13/06	
REVIEWED	CAH	10/31/06	



DRAINAGE IMPROVEMENTS
 PROPOSED CROSS-SECTIONS
 FOR SOUTHEAST QUADRANT
 STA. 12+50 TO STA. 13+50