

0' 50' 100' 200'
 FULL SIZE SCALE: 1" = 100'
 HALF SIZE SCALE: 1" = 200'

LEGEND

- EXISTING PAVEMENT
- EXISTING BUILDINGS
- EXISTING INLET

COORDINATE DATA (LINE A)

ID.	STATION	OFFSET	NORTHING	EASTING
1	0+00.00	EQ	1274407.7810	2528348.7587
2	0+00.00	600' RT.	1274892.3633	2527994.9509
3	1+22.48	EQ	1274336.8088	2528251.5547
4	1+22.48	450' RT.	1274664.9459	2527943.6166
5	1+61.75	EQ	1274302.9721	2528231.0386
6	1+61.75	300' RT.	1274349.2078	2527934.6230
7	1+22.48	50' LT.	1274294.9579	2528282.4174
8	2+01.02	EQ	1274264.6534	2528240.1605
9	2+01.02	325' RT.	1274134.3634	2527942.4220
10	3+00.00	EQ	1274184.3539	2528298.7873
11	3+00.00	300' RT.	1273948.4819	2527975.7324
12	5+00.00	EQ	1274022.8264	2528416.7233
13	5+00.00	300' RT.	1273786.9545	2528093.6684
14	7+00.00	EQ	1273861.2990	2528534.6592
15	7+00.00	300' RT.	1273625.4271	2528211.6043
16	8+16.23	EQ	1273768.6080	2528604.8120

COORDINATE DATA (LINE B)

ID.	STATION	OFFSET	NORTHING	EASTING
17	0+00.00	EQ	1274499.8058	2528474.7977
18	0+00.00	500' LT.	1274903.6244	2528179.9578
19	1+26.37	EQ	1274572.4007	2528574.2281
20	1+26.37	375' LT.	1274915.1067	2528421.9872
21	1+65.64	EQ	1274581.5293	2528612.5562
22	1+65.64	350' LT.	1274927.3476	2528666.4979
23	1+26.37	50' RT.	1274530.1506	2528604.5420
24	2+04.91	EQ	1274561.3370	2528646.1522
25	2+04.91	400' LT.	1274885.7171	2528880.1956
26	3+00.00	EQ	1274484.0148	2528702.6125
27	3+00.00	650' LT.	1274867.3066	2529227.5766
28	5+00.00	EQ	1274322.4873	2528820.5484
29	5+00.00	900' LT.	1274853.1991	2529547.4219
30	7+00.00	EQ	1274160.9599	2528938.4844
31	7+00.00	1,100' LT.	1274809.6076	2529826.8853
32	8+09.55	EQ	1274071.3060	2529001.4670
33	9+00.00	EQ	1273998.9477	2529055.7436
34	9+00.00	1,200' LT.	1274706.5634	2530024.9082
35	11+00.00	EQ	1273838.9560	2529175.7547
36	11+00.00	1,000' LT.	1274428.6358	2529983.3918
37	12+50.00	EQ	1273718.9623	2529265.7630
38	12+50.00	500' LT.	1274013.8021	2529669.5816
39	13+42.70	EQ	1273644.8050	2529321.3890

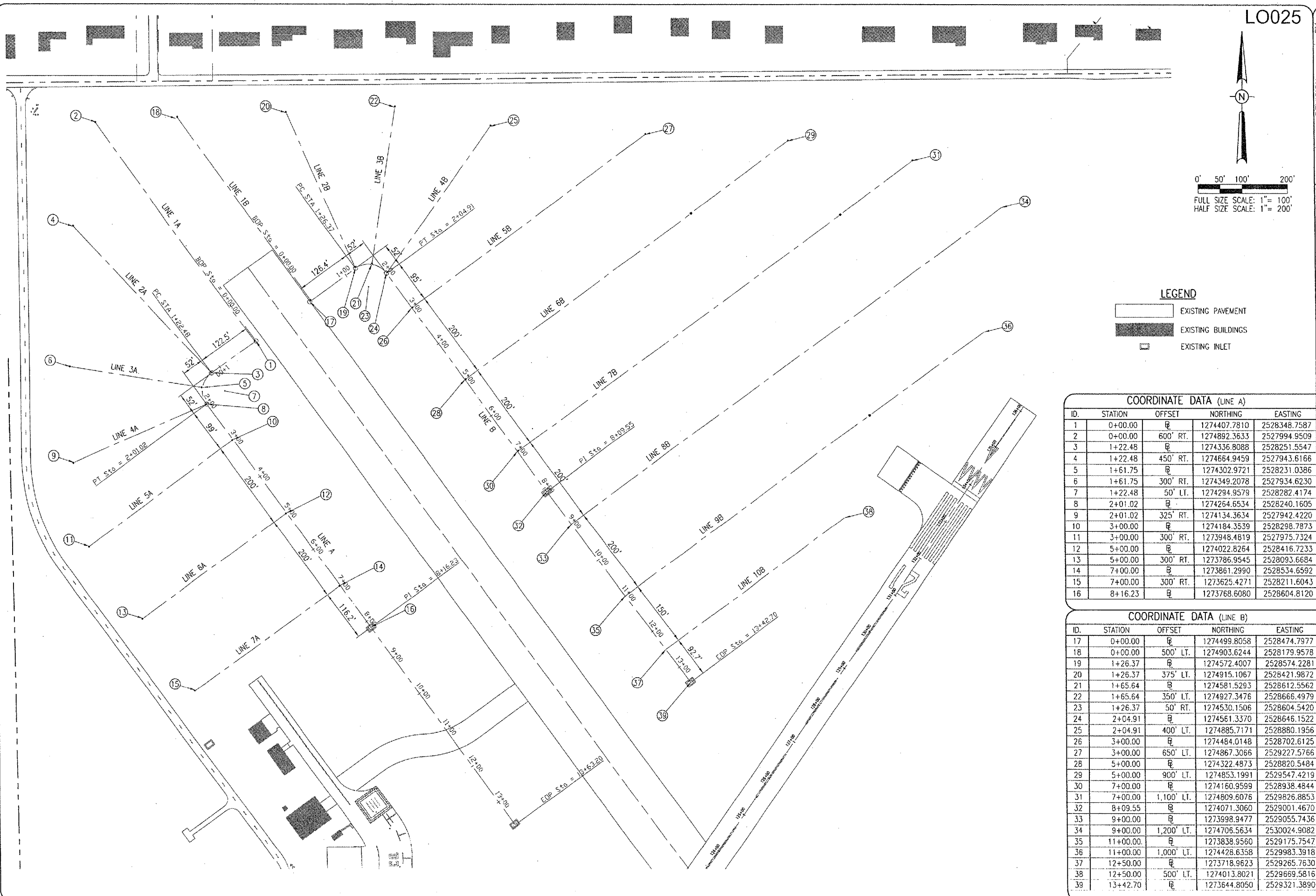
80-Project No. 813-060CND 0800
 Filename: R-122GED.DWG
 Scale: 1" = 100'
 Date: 09/11/06

LAYOUT	CCC	08/21/06
DRAWN	CCC	09/11/06
REVIEWED	CAH	10/31/06

HANSON
 Hanson Professional Services Inc.
 1525 South Sixth Street
 Springfield, Illinois 62703-2886
 Offices Nationwide

DRAINAGE IMPROVEMENTS
 PROPOSED GEOMETRICS PLAN

D:\C 22 2006 8:04 AM CAH
 \Airports\LOGAN\813-060CND\AIRPORT\SHEETS\R-122GED.DWG - Layout1



DATE	REVISION	BY

LOGAN COUNTY AIRPORT
 LINCOLN, ILLINOIS
 A.I.P. PROJ.: 3-17-0062-813
 I.L. PROJ.: AAA-3545