

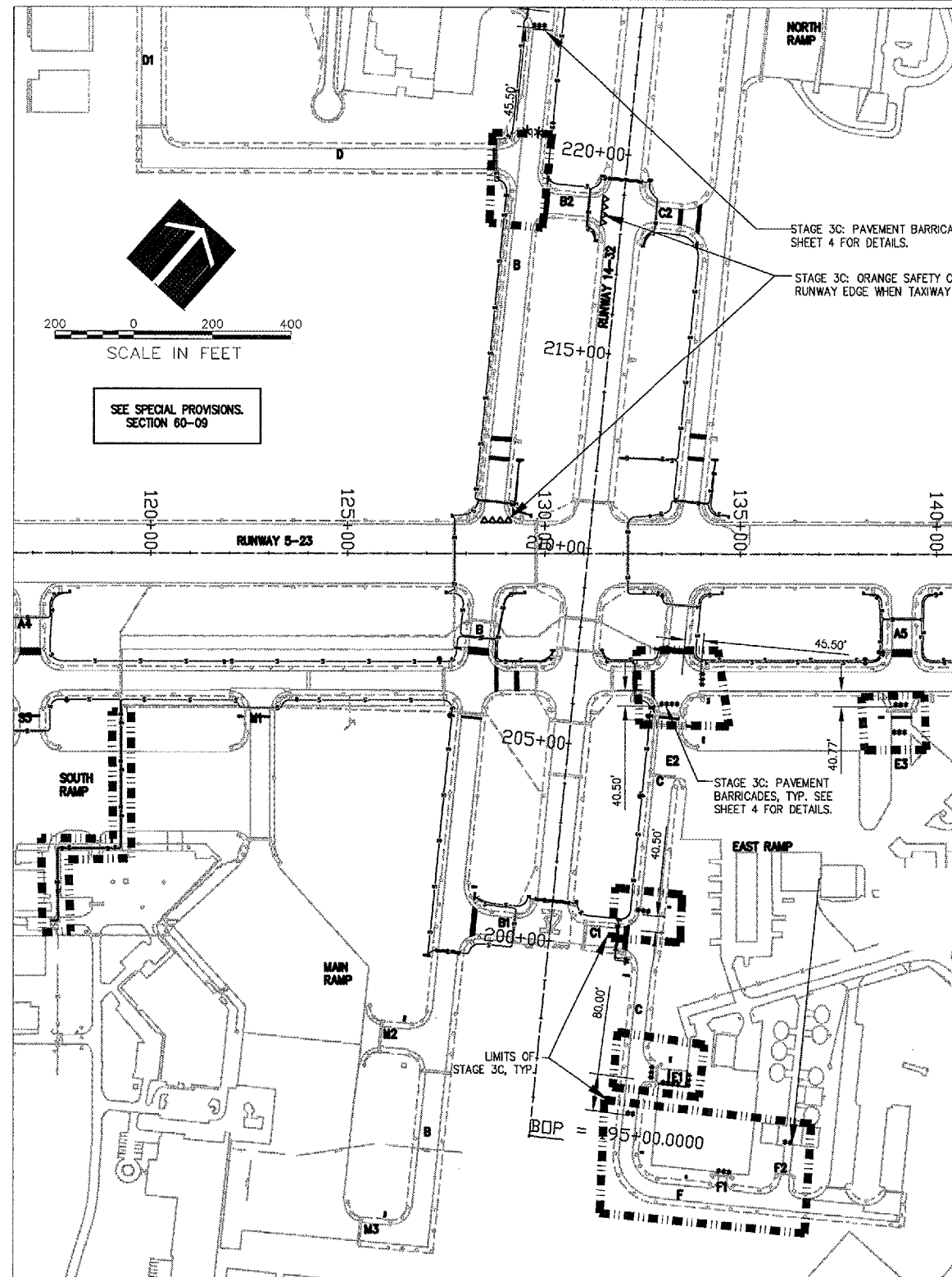
**STAGE 3A AND 3B NOTES**

**NOTES:**

- THE CONTRACTOR MUST COMPLETE ALL WORK WITHIN STAGE 3A BEFORE BEGINNING STAGE 3B.
- THE CONTRACTOR IS TO MAINTAIN RUNWAY ACCESS FOR ALL AIRPORT CLIENTS AT ALL TIMES. THE CONTRACTOR IS TO REOPEN ALL TAXIWAYS TO AIR TRAFFIC AT THE END OF EACH DAY. THE CONTRACTOR MUST ENSURE THE WORK AREA MEETS FAA CRITERIA PRIOR TO OPENING ANY TAXIWAY.
- ALL CONTRACTOR'S ACTIVITIES SHALL BE LIMITED TO AREA WITHIN THE STAGE LIMITS AS SHOWN. THE CONTRACTOR MUST MAINTAIN AIR TRAFFIC ROUTE TO RUNWAY 14-32 AT ALL TIMES.
- ALL CONSTRUCTION EQUIPMENT WILL BE LIMITED TO A HEIGHT OF 15 FEET UNLESS PRIOR APPROVAL IS GIVEN BY THE ENGINEER.
- SEE CONSTRUCTION AND SAFETY NOTES, SHEET 4.
- THE CONTRACTOR HAS 2 DAYS TO SUBSTANTIALLY COMPLETE WORK IN STAGE 3A AND 3B

**THE FOLLOWING ITEMS ARE TO BE COMPLETED IN STAGE 3A AND 3B:**

- PROVIDE TEMPORARY BARRICADES AS SHOWN.
- PROVIDE LATHING AND WARNING TAPE AS SHOWN.
- INSTALL CABLE IN UNIT DUCT, HANDHOLES, SIGN BASES, AND SIGNS AS INDICATED ON THE PLANS WITHIN STAGE LIMITS.
- REGRADE SHOULDERS AND SWALES WHERE NECESSARY WITHIN STAGE LIMITS.
- TOPSOIL AND SEED WITHIN CONSTRUCTION LIMITS.
- REMOVE LATHING AND WARNING TAPE, BARRICADES AND TEMPORARY EROSION CONTROL MEASURES AS NECESSARY.



**STAGE 3C NOTES**

**NOTES:**

- THE CONTRACTOR SHALL WORK IN ONE AREA AT A TIME, AS DELINEATED BY STAGE 3C LIMITS. THE CONTRACTOR MUST SUBSTANTIALLY COMPLETE WORK IN ONE AREA PRIOR TO BEGINNING WORK IN A NEW SECTION OF 3C.
- WORK AT THE INTERSECTION OF TAXIWAY D AND TAXIWAY B MUST BE COORDINATED WITH AIRPORT OPERATIONS AND THE TENANT THROUGH THE RESIDENT ENGINEER PRIOR TO CLOSING THE TAXIWAY AND BEGINNING ANY WORK. WORK IN THIS INTERSECTION MUST BE COMPLETED DURING ONE 8 HOUR CLOSURE.
- THE CONTRACTOR IS TO REOPEN ALL TAXIWAYS TO AIR TRAFFIC AT THE END OF EACH DAY. THE CONTRACTOR MUST ENSURE THE WORK AREA MEETS FAA CRITERIA PRIOR TO OPENING ANY TAXIWAY.
- ALL CONTRACTOR'S ACTIVITIES SHALL BE LIMITED TO AREA WITHIN THE STAGE 3C LIMITS AS SHOWN. THE CONTRACTOR MUST MAINTAIN AIR TRAFFIC ROUTE TO RUNWAY 14-32 AT ALL TIMES.
- ALL CONSTRUCTION EQUIPMENT WILL BE LIMITED TO A HEIGHT OF 15 FEET UNLESS PRIOR APPROVAL IS GIVEN BY THE ENGINEER.
- SEE CONSTRUCTION AND SAFETY NOTES, SHEET 4.
- THE CONTRACTOR HAS 2 DAYS TO SUBSTANTIALLY COMPLETE WORK IN STAGE 3C.
- PLACE PAVEMENT BARRICADES AS INDICATED OR AS DIRECTED BY THE RESIDENT ENGINEER TO ENSURE WORK AREA IS SECURE AND SAFE.

**THE FOLLOWING ITEMS ARE TO BE COMPLETED IN STAGE 3C:**

- PROVIDE TEMPORARY BARRICADES AS SHOWN.
- PROVIDE LATHING AND WARNING TAPE AS SHOWN.
- INSTALL CABLE IN UNIT DUCT, HANDHOLES, SIGN BASES, AND SIGNS AS INDICATED ON THE PLANS WITHIN STAGE LIMITS.
- REGRADE SHOULDERS AND SWALES WHERE NECESSARY WITHIN STAGE LIMITS.
- TOPSOIL AND SEED WITHIN CONSTRUCTION LIMITS.
- REMOVE LATHING AND WARNING TAPE, BARRICADES AND TEMPORARY EROSION CONTROL MEASURES AS NECESSARY.

WA057



HANSON PROFESSIONAL SERVICES INC.

815 Commerce Drive, Suite 200  
Oak Brook, Illinois 60523  
Telephone: 630.990.3800  
Fax: 630.990.3801



WAUKEGAN REGIONAL AIRPORT  
WAUKEGAN PORT DISTRICT

3580 North McAree Road  
Waukegan, Illinois 60087  
Telephone: 847.244.0066  
Fax: 847.244.3813

AIRFIELD SIGNAGE IMPROVEMENTS

AIP PROJECT NO. 3-17-0105-B35  
IDA PROJECT NO. UGN-3650

No.	Drawing Issue Description	Date	By

Date  
NOVEMBER 10, 2006  
Sheet Title

**CONSTRUCTION STAGING PLAN STAGE 3A,3B AND 3C**

831-06A8004  
Project Number  
LDH 05/18/06  
Layout By Date  
LDH 05/18/06  
Designed By Date  
RMH 11/10/06  
Reviewed By Date  
LDH  
Drawn By

4: (06:05:10:00:00) [DRAWINGS] SHEETS [06- STAGING PLANNING NOV 13, 2006 2:47PM LDH