



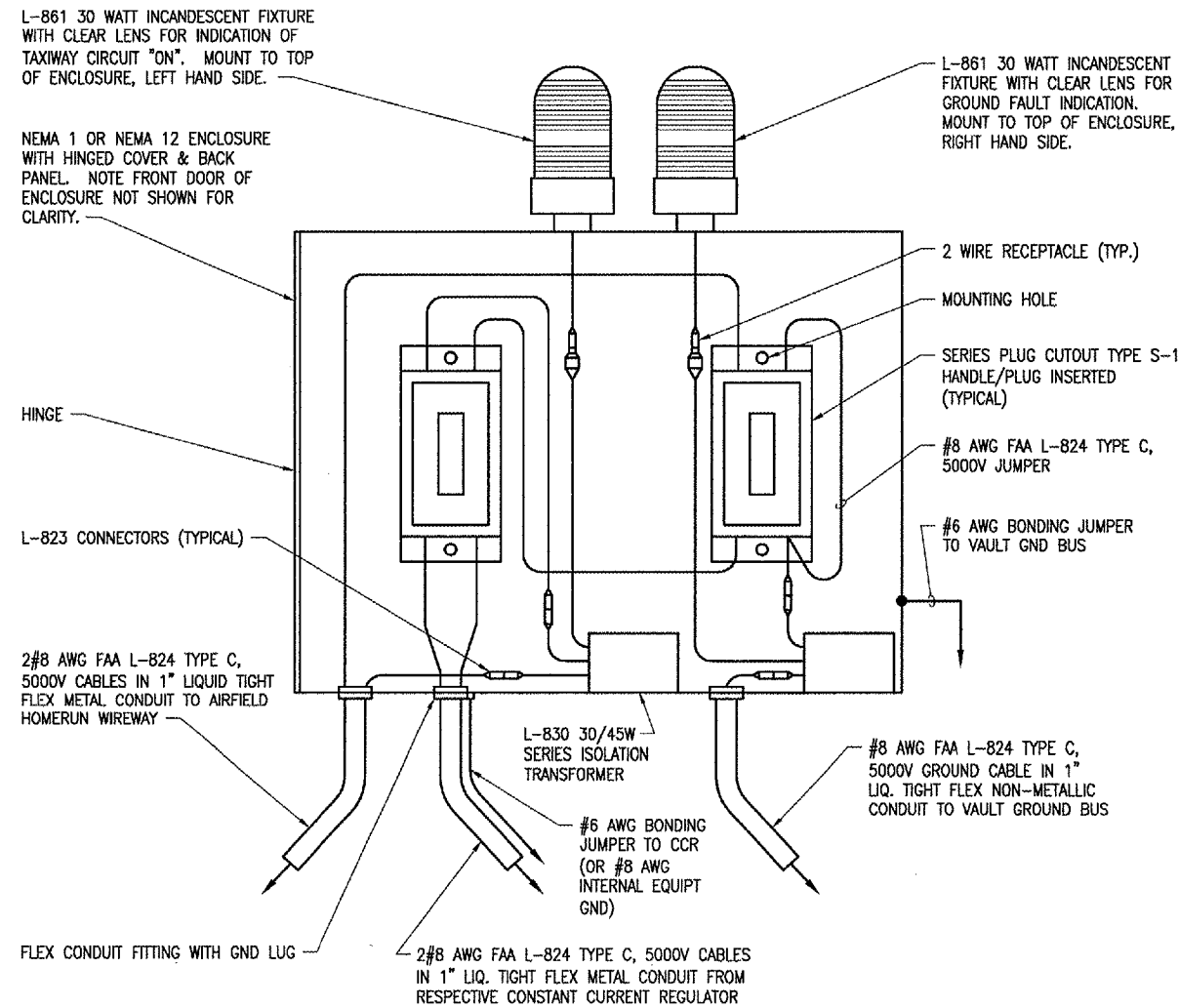
HANSON PROFESSIONAL SERVICES INC.  
 815 Commerce Drive, Suite 200  
 Oak Brook, Illinois 60523  
 Telephone: 630.990.3800  
 Fax: 630.990.3801



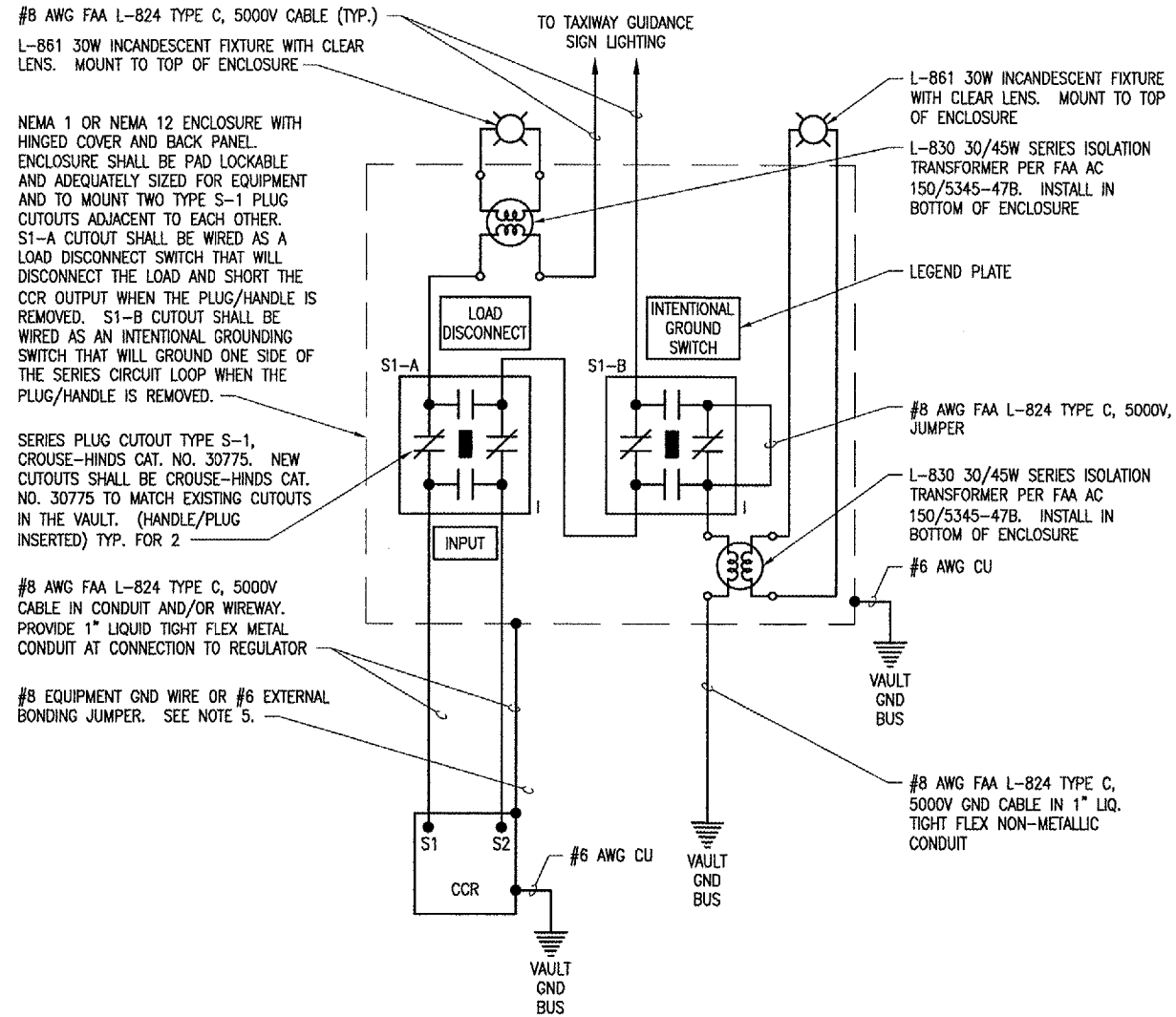
WAUKEGAN REGIONAL AIRPORT  
 WAUKEGAN PORT DISTRICT  
 3580 North McAree Road  
 Waukegan, Illinois 60087  
 Telephone: 847.244.0066  
 Fax: 847.244.3813

AIRFIELD SIGNAGE IMPROVEMENTS

AIP PROJECT NO. 3-17-0105-B35  
 IDA PROJECT NO. UGN-3650



SERIES PLUG CUTOUT MOUNTING DETAIL FOR TAXIWAY GUIDANCE SIGN CIRCUIT



HIGH VOLTAGE WIRING SCHEMATIC FOR TAXI GUIDANCE SIGNS

NOTES

1. PROVIDE PHENOLIC ENGRAVED LEGEND PLATES FOR CONSTANT CURRENT REGULATOR NOTING THE REGULATOR DESIGNATION.
2. PLUG CUTOUT CABINET SHALL BE FURNISHED WITH A PHENOLIC ENGRAVED LEGEND PLATE THAT IDENTIFIES THE RESPECTIVE CIRCUIT OR REGULATOR. INCLUDE AN ADDITIONAL LEGEND PLATE LABELED "CAUTION OPERATE S1 HANDLES WITH LOAD DE-ENERGIZED".
3. PROVIDE PHENOLIC ENGRAVED LEGEND PLATES FOR EACH CUTOUT TO IDENTIFY THE FUNCTION OF EACH RESPECTIVE CUTOUT.
4. PROVIDE ADEQUATE WORKING SPACE IN FRONT OF CUTOUT ENCLOSURE TO MEET NEC CLEARANCE REQUIREMENTS.
5. LIQUID TIGHT FLEXIBLE METAL CONDUIT AND ASSOCIATED FITTINGS SHALL BE U.L. LISTED TO MEET THE REQUIREMENTS OF NEC 350.6, SUITABLE FOR GROUNDING AND SUNLIGHT RESISTANT. LIQUID TIGHT FLEXIBLE METAL CONDUIT THAT IS USED FOR FLEXIBILITY (INCLUDING CONNECTIONS TO CCR'S & TRANSFORMERS) SHALL REQUIRE AN EXTERNAL BONDING JUMPER OR INTERNAL EQUIPMENT GROUNDING CONDUCTOR PER NEC 350.60. EXTERNAL BONDING JUMPERS USED WITH CCR INSTALLATIONS SHALL BE #6 AWG COPPER (MINIMUM). INTERNAL EQUIPMENT GROUNDING CONDUCTOR SHALL BE #8 AWG COPPER (MINIMUM). DO NOT INSTALL LIQUID TIGHT FLEXIBLE METAL CONDUIT THAT IS NOT U.L. LISTED.

LEGEND

- "I" DENOTES PLUG CUTOUT WITH PLUG INSERTED
- "P" DENOTES PLUG CUTOUT WITH PLUG PULLED
- "CCR" DENOTES CONSTANT CURRENT REGULATOR

No.	Drawing Issue Description	Date	By

Date  
 NOVEMBER 10, 2006  
 Sheet Title

HIGH VOLTAGE SCHEMATIC FOR TAXIWAY SIGNS

831-06A8004
Project Number
KNL 09/01/06
Layout By Date
KNL 09/01/06
Designed By Date
RMH 11/10/06
Reviewed By Date
MV
Drawn By
Sheet No.