

URBAN

URBAN

Specialty Item

SUMMARY OF QUANTITIES			CONSTRUCTION TYPE CODE						
CODE NO	ITEM	UNIT	TOTAL QUANTITIES	URBAN ROADWAY 0004 90% FED 10% STATE	TRAFFIC SIGNAL 0021 90% FED 6.7% STATE 3.3% LOCAL	EVP LED & LIGHTING 0021 100% LOCAL			
20100110	TREE REMOVAL (6 TO 15 UNITS DIAMETER)	UNIT	21	21					
20100210	TREE REMOVAL (OVER 15 UNITS DIAMETER)	UNIT	112	112					
20101000	TEMPORARY FENCE	FOOT	90	90					
20200100	EARTH EXCAVATION	CU YD	499	499					
20201200	REMOVAL AND DISPOSAL OF UNSUITABLE MATERIAL	CU YD	97	97					
20400800	FURNISHED EXCAVATION	CU YD	79	79					
20800150	TRENCH BACKFILL	CU YD	11	11					
21101505	TOPSOIL EXCAVATION AND PLACEMENT	CU YD	260	260					
25000400	NITROGEN FERTILIZER NUTRIENT	POUND	20	20					
25000500	PHOSPHORUS FERTILIZER NUTRIENT	POUND	20	20					
25000600	POTASSIUM FERTILIZER NUTRIENT	POUND	20	20					
* 25200110	SODDING, SALT TOLERANT	SO YD	1637	1637					
25200200	SUPPLEMENTAL WATERING	UNIT	17	17					
28000250	TEMPORARY EROSION CONTROL SEEDING	POUND	22	22					
28000305	TEMPORARY DITCH CHECKS	FOOT	36	36					

SUMMARY OF QUANTITIES			CONSTRUCTION TYPE CODE						
CODE NO	ITEM	UNIT	TOTAL QUANTITIES	URBAN ROADWAY 0004 90% FED 10% STATE	TRAFFIC SIGNAL 0021 90% FED 6.7% STATE 3.3% LOCAL	EVP LED & LIGHTING 0021 100% LOCAL			
28000400	PERIMETER EROSION BARRIER	FOOT	590	590					
28000510	INLET FILTERS	EACH	5	5					
28001100	TEMPORARY EROSION CONTROL BLANKET	SO YD	1000	1000					
30300112	AGGREGATE SUBGRADE IMPROVEMENT 12"	SO YD	1100	1100					
35501318	HOT-MIX ASPHALT BASE COURSE, 8 1/2"	SO YD	1075	1075					
40600290	BITUMINOUS MATERIALS (TACK COAT)	POUND	5811	5811					
40600400	MIXTURE FOR CRACKS, JOINTS, AND FLANGEWAYS	TON	12	12					
40600827	POLYMERIZED LEVELING BINDER (MACHINE METHOD), IL-4.75, N50	TON	372	372					
40600982	HOT-MIX ASPHALT SURFACE REMOVAL - BUTT JOINT	SO YD	70	70					
40603565	POLYMERIZED HOT-MIX ASPHALT SURFACE COURSE, MIX "E", N70	TON	885	885					
42001300	PROTECTIVE COAT	SO YD	130	130					
44000100	PAVEMENT REMOVAL	SO YD	42	42					
44000159	HOT-MIX ASPHALT SURFACE REMOVAL, 2 1/2"	SO YD	7920	7920					

REV 1-4-18

## EARTHWORK SCHEDULE (IL 53)

IL RTE 53 AT ROYCE ROAD	EARTH EXCAVATION (CU. YD.)	TOP SOIL EXCAVATION (CU. YD.)	EXCAVATION USED AS EMBANKMENT (SHRINKAGE 15%) (CU. YD.)	EXCAVATION USED AS TOP SOIL EXCAVATION (SHRINKAGE 15%) (CU. YD.)	EMBANKMENT (CU. YD.)	TOP SOIL PLACEMENT (CU. YD.)	EARTH WORK BALANCE SURPLUS (+) OR SHORTAGE (-) (CU. YD.)	TOP SOIL BALANCE SURPLUS (+) OR SHORTAGE (-) (CU. YD.)
	428	265	364	225	499	138	-135	87
<b>TOTAL</b>	428	265	364	225	499	138	-135	87

## EARTHWORK SCHEDULE (ROYCE RD.)

IL RTE 53 AT ROYCE ROAD	EARTH EXCAVATION (CU. YD.)	TOP SOIL EXCAVATION (CU. YD.)	EXCAVATION USED AS EMBANKMENT (SHRINKAGE 15%) (CU. YD.)	EXCAVATION USED AS TOP SOIL EXCAVATION (SHRINKAGE 15%) (CU. YD.)	EMBANKMENT (CU. YD.)	TOP SOIL PLACEMENT (CU. YD.)	EARTH WORK BALANCE SURPLUS (+) OR SHORTAGE (-) (CU. YD.)	TOP SOIL BALANCE SURPLUS (+) OR SHORTAGE (-) (CU. YD.)
	71	41	60	35	4	25	56	10
<b>TOTAL</b>	71	41	60	35	4	25	56	10

### TREE REMOVAL SCHEDULE

STATION	OFFSET/SIDE (FEET)	6 TO 15 UNIT (DIA.)	OVER 15 UNIT (DIA.)
19+39	0.0'	6	
19+52	0.0'	7	
21+16	0.0'	8	
-----			
26+10	64.8' LT		
27+27	51.4' LT		
54+15	70.5' LT		2@20"
54+18	69.6' LT		2@20"
54+28	68.5' LT		2@16"
<b>TOTAL</b>	6 TO 15 UNIT DIA. = 21		OVER 15 UNIT DIA. = 112

1

FILE NAME =	USER NAME = guilleumefp	DESIGNED -	REVISED -	<b>STATE OF ILLINOIS DEPARTMENT OF TRANSPORTATION</b>	<b>SCHEDULE OF QUANTITIES IL. 53 AT ROYCE RD.</b>	F.A.P. RTE.	SECTION	COUNTY	TOTAL SHEETS	SHEET NO.	
Default	Documents\IDOT Offices\District 1\Projects\P11432\Drawings\Design\P114312-Design.dgn	CHECKED -	REVISED -			870	534-1-N	WILL	62	11	
	PLOT SCALE = 100.0000' / in.	DATE -	REVISED -			CONTRACT NO. 60X59		ILLINOIS FED. AID PROJECT			
	PLOT DATE = 1/4/2018					SCALE:	SHEET	OF	SHEETS	STA.	TO STA.

REV 1-4-18



EXIST. CURVE E\_IL53-1  
 PI STA. = 26+58.89  
 $\Delta = 34^\circ 43' 26''$  (RT)  
 $D = 3^\circ 01' 13''$   
 $R = 1,897.11'$   
 $T = 593.14'$   
 $L = 1,149.74'$   
 $E = 90.56'$   
 $e =$   
 $T.R. =$   
 $S.E. RUN =$   
 $P.C. STA. = 20+65.76$   
 $P.T. STA. = 32+15.50$

**PROJECT LIMIT**  
**STA. 18 + 81.0**

**PROJECT LIMIT**  
**STA. 29 + 74.1**

**PROJECT LIMIT**  
**STA. 18 + 81.0**

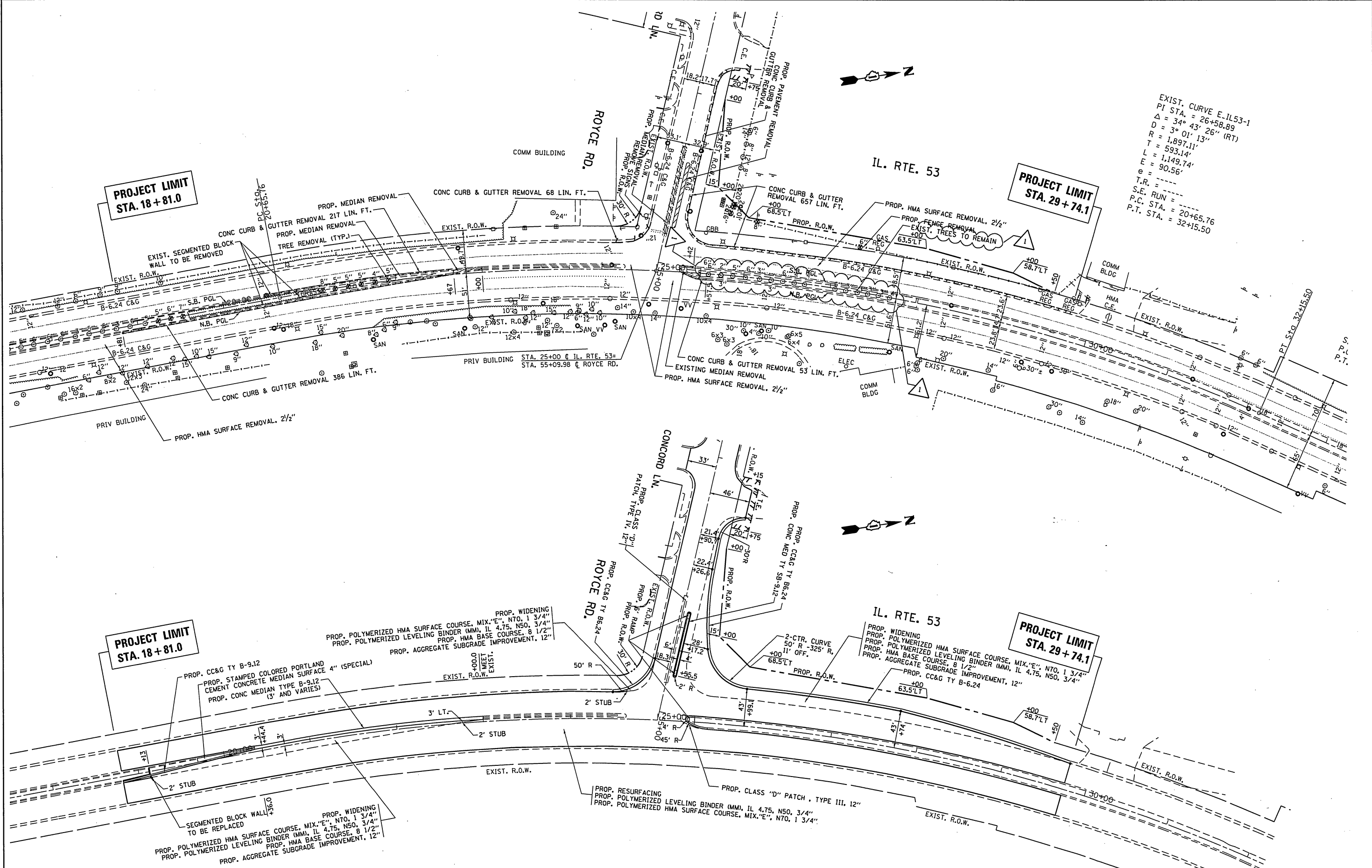
**PROJECT LIMIT**  
**STA. 29 + 74.1**

**STATE OF ILLINOIS**  
**DEPARTMENT OF TRANSPORTATION**

**IL. ROUTE 53 AT ROYCE RD.**  
**EXISTING & PROPOSED ROADWAY PLAN**

F.A.P. RTE.	SECTION	COUNTY	TOTAL SHEETS	SHEET NO.
870	534-1-N	WILL	62	13
CONTRACT NO. 60X59				
ILLINOIS FED. AID PROJECT				

SCALE: 1"=50' SHEET OF SHEETS STA. TO STA.



FILE NAME =	USER NAME = guilleumefp	DESIGNED -	REVISED -
pw\N1084EBIDINTEG\Illinois.gov\PIWIDOT\Documents\DOT Offices\District 1\Projects\P114312\Drawings\CAD\Drawings\PI14312-sht-plnprf.dwg		CHECKED -	REVISED -
Default	PLOT DATE = 1/4/2018	DATE -	REVISED -

REV 1-4-18

