

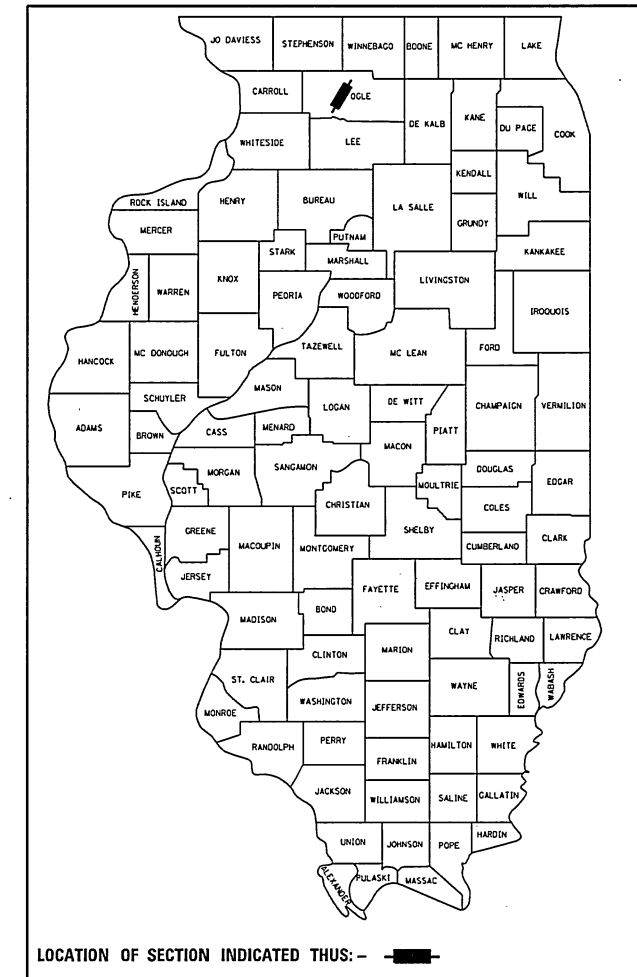
STATE OF ILLINOIS  
DEPARTMENT OF TRANSPORTATION  
**PROPOSED  
HIGHWAY PLANS**

F.A.P. RTE.	SECTION	COUNTY	TOTAL SHEETS	SHEET NO.
742	(38,39) RS-6	OGLE	135	1
		ILLINOIS	CONTRACT NO. 64K27	

135 + 1 = 136 TOTAL SHEETS

D-92-047-14

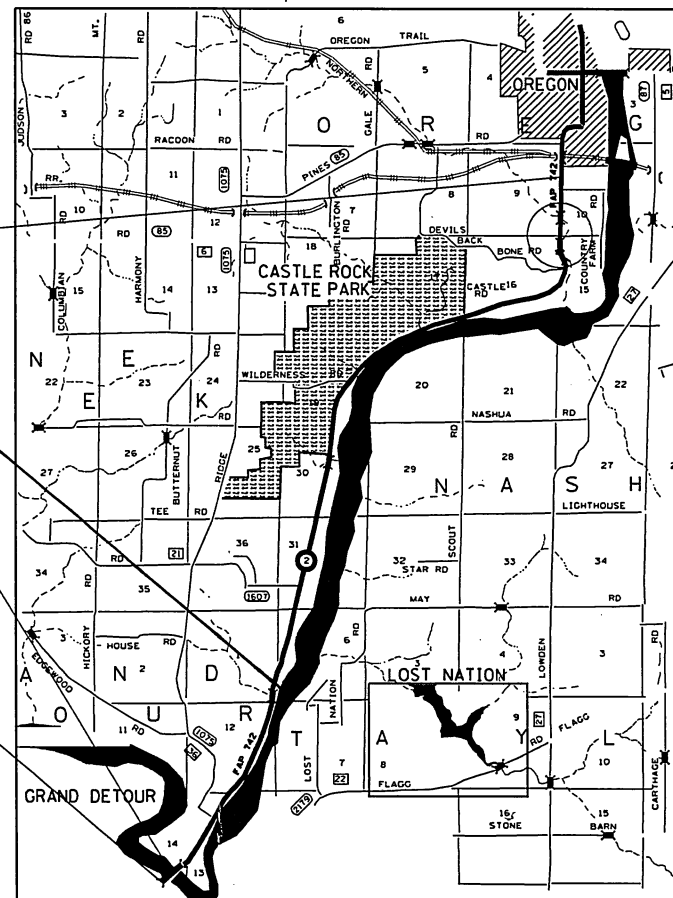
FOR INDEX OF SHEETS AND STATE STANDARDS, SEE SHEET NO. 2



FAP ROUTE 742 (IL 2)  
SECTION (38,39)RS-6  
PROJECT NHPP-MD79(536)  
COLD MILLING AND HOT-MIX  
ASPHALT RESURFACING  
OGLE COUNTY

C-92-071-14

← R 9 E | R 10 E →



PROJECT ENDS STA 506+19

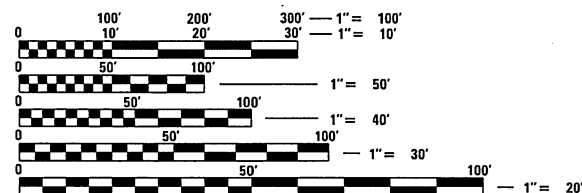
PAVING GAP STA 121+15-123+03

STA 715+21.69 = STA 0+00.00

PROJECT BEGINS STA 710+70



T 23 N  
T 22 N



FULL SIZE PLANS HAVE BEEN PREPARED USING STANDARD ENGINEERING SCALES. REDUCED SIZED PLANS WILL NOT CONFORM TO STANDARD SCALES. IN MAKING MEASUREMENTS ON REDUCED PLANS, THE ABOVE SCALES MAY BE USED.

J.U.L.I.E.  
JOINT UTILITY LOCATION INFORMATION FOR EXCAVATION  
1-800-892-0123  
OR 811

PROJECT ENGINEER: MAT DOBIE  
PROJECT MANAGER: ROB BATES (815)284-5464

CONTRACT NO. 64K27

GRAND DETOUR (1, 6, 12, 13, 14, 31)  
OREGON-NASHUA (9, 10, 15, 16, 17, 19, 20, 30)

GROSS LENGTH OF PROJECT = 51071 FT = 9.67 MILES  
NET LENGTH OF PROJECT = 51071 FT = 9.67 MILES  
50883 FT = 9.64 MILES

STATE OF ILLINOIS  
DEPARTMENT OF TRANSPORTATION  
SUBMITTED Oct. 13 2017  
K. Marshall  
REGIONAL ENGINEER  
Nov 30 2017  
Maurice M. Addis PE  
ENGINEER OF DESIGN AND ENVIRONMENT  
Nov 30 2017  
James A. [Signature]  
DIRECTOR OF PROGRAM DEVELOPMENT

PRINTED BY THE AUTHORITY  
OF THE STATE OF ILLINOIS

# SUMMARY OF QUANTITIES

CODE NO.	ITEM	UNIT	TOTAL QUANTITY	CONSTRUCTION CODE			
				80% FED 20% STATE ROADWAY	80% FED 20% STATE ROADWAY	80% FED 20% STATE BRIDGE	80% FED 20% STATE BRIDGE
				0005	0021	0047	0059
				RURAL	RURAL	S.N. 052-0063	RURAL
20200100	EARTH EXCAVATION	CU YD	280	280			
20400800	FURNISHED EXCAVATION	CU YD	300		300		
25000110	SEEDING, CLASS 1A	ACRE	0.25	0.25			
25000210	SEEDING, CLASS 2A	ACRE	2.75	2.75			
25000400	NITROGEN FERTILIZER NUTRIENT	POUND	258	258			
25000500	PHOSPHORUS FERTILIZER NUTRIENT	POUND	258	258			
25000600	POTASSIUM FERTILIZER NUTRIENT	POUND	258	258			
# 25000750	MOWING	ACRE	2.75	2.75			
25100115	MULCH, METHOD 2	ACRE	2.75	2.75			
25100630	EROSION CONTROL BLANKET	SQ YD	1171	1171			
28000250	TEMPORARY EROSION CONTROL SEEDING	POUND	7865	7865			
30300108	AGGREGATE SUBGRADE IMPROVEMENT 8"	SQ YD	2521	2521			
30300112	AGGREGATE SUBGRADE IMPROVEMENT 12"	SQ YD	760	760			
40600275	BITUMINOUS MATERIALS (PRIME COAT)	POUND	121792	121792			
40600290	BITUMINOUS MATERIALS (TACK COAT)	POUND	167796	167796			

\* SPECIALTY ITEM # 100% STATE

MODEL: Default  
FILE NAME: p:\w\10484810\NTEG\Illinois.gov\FWIDOT\Documents\DOT\_Offices\District\_2\Projects\2017\14\CAD\Drawings\Sheets\02-sht-500.dgn

14

USER NAME = batesrl PLOT SCALE = 200.0000' / in. PLOT DATE = Oct-19-2017 10:25:00 AM	DESIGNED - _____ DRAWN - _____ CHECKED - _____ DATE - _____	REVISED - _____ REVISED - _____ REVISED - _____ REVISED - _____	<b>STATE OF ILLINOIS DEPARTMENT OF TRANSPORTATION</b>	<b>SUMMARY OF QUANTITIES</b>	F.A.P. RTE. 742 SECTION (38,39)RS-6 COUNTY OGLE TOTAL SHEETS 135 SHEET NO. 5 CONTRACT NO. 64K27 ILLINOIS FED. AID PROJECT
--	--	--	---	------------------------------	---

11-14-17 12/1

# SUMMARY OF QUANTITIES

CODE NO.	ITEM	UNIT	TOTAL QUANTITY	CONSTRUCTION CODE			
				80% FED 20% STATE ROADWAY	80% FED 20% STATE ROADWAY	80% FED 20% STATE BRIDGE	80% FED 20% STATE BRIDGE
				0005	0021	0047	0059
				RURAL	RURAL	S.N. 052-0063	RURAL
40600527	LEVELING BINDER (HAND METHOD), IL-9.5FG, N50	TON	142	142 ✓			
40600627	LEVELING BINDER (MACHINE METHOD), IL-9.5FG, N50	TON	9583	9583			
40600985	PORTLAND CEMENT CONCRETE SURFACE REMOVAL - BUTT JOINT	SQ YD	100	100 ✓			
40600990	TEMPORARY RAMP	SQ YD	1260	1260 ✓			
40601005	HOT-MIX ASPHALT REPLACEMENT OVER PATCHES	TON	403	403 ✓			
40603080	HOT-MIX ASPHALT BINDER COURSE, IL-19.0, N50	TON	15836	15836 ✓			
40603310	HOT-MIX ASPHALT SURFACE COURSE, MIX "C", N50	TON	26008	26008			
40603390	HOT-MIX ASPHALT SURFACE COURSE, MIX "F", N70	TON	1843	1843			
40800050	INCIDENTAL HOT-MIX ASPHALT SURFACING	TON	1501	1501 ✓			
<del>42001300</del>	<del>PROTECTIVE COAT</del>	<del>SQ YD</del>	<del>133</del>				<del>133</del>
44000158	HOT-MIX ASPHALT SURFACE REMOVAL, 2 1/4"	SQ YD	122583	122583 ✓			
44000173	HOT-MIX ASPHALT SURFACE REMOVAL, 6"	SQ YD	74815	74815 ✓			
44002232	HOT-MIX ASPHALT REMOVAL OVER PATCHES, 8"	SQ YD	900	900 ✓			
44004250	PAVED SHOULDER REMOVAL	SQ YD	53453	53453 ✓			
44200970	CLASS B PATCHES, TYPE II, 10 INCH	SQ YD	115	115 ✓			

\* SPECIALTY ITEM

MODEL: Default FILE NAME: p:\1104\BID\INTEC\Illinois.gov\FWD\DOT\Documents\DOT - Office\Bids\2017\41\CA\BID\at\CA\Sheet02.sht.S00.dgn

USER NAME = batesrl DESIGNED - _____ DRAWN - _____ PLOT SCALE = 200.0000' / in. CHECKED - _____ PLOT DATE = Oct-19-2017 10:25:19 AM DATE - _____	REVISED - _____ REVISED - _____ REVISED - _____ REVISED - _____	<b>STATE OF ILLINOIS</b> <b>DEPARTMENT OF TRANSPORTATION</b>	<b>SUMMARY OF QUANTITIES</b>	F.A.P. RTE. 742 SECTION (38,39)RS-6 COUNTY OGLE TOTAL SHEETS 135 SHEET NO. 6	CONTRACT NO. 64K27 ILLINOIS FED. AID PROJECT
--	--	---	------------------------------	--	---

4

SCALE: \_\_\_\_\_ SHEET \_\_\_\_\_ OF \_\_\_\_\_ SHEETS STA. \_\_\_\_\_ TO STA. \_\_\_\_\_  
 11-4-R 11-3-18 REV

# SUMMARY OF QUANTITIES

CODE NO.	ITEM	UNIT	TOTAL QUANTITY	CONSTRUCTION CODE							
				80% FED 20% STATE ROADWAY 0005 RURAL	80% FED 20% STATE ROADWAY 0021 RURAL	80% FED 20% STATE BRIDGE 0047 S.N. 052-0063	80% FED 20% STATE BRIDGE 0059 RURAL				
				44200974	CLASS B PATCHES, TYPE III, 10 INCH	SQ YD	19	19			
				44200976	CLASS B PATCHES, TYPE IV, 10 INCH	SQ YD	53	53			
44201299	DOWEL BARS 1 1/2"	EACH	340	340							
44201745	CLASS D PATCHES, TYPE III, 8 INCH	SQ YD	18	18							
44201747	CLASS D PATCHES, TYPE IV, 8 INCH	SQ YD	2503	2503							
44213100	PAVEMENT FABRIC	SQ YD	72	72							
44213200	SAW CUTS	FOOT	722	722							
44213202	TIE BARS 1"	EACH	18	18							
48102100	AGGREGATE WEDGE SHOULDER, TYPE B	TON	611	611							
48203020	HOT-MIX ASPHALT SHOULDERS, 5' 3/4"	SQ YD	53453	53453							
<del>50102400</del>	<del>CONCRETE REMOVAL</del>	<del>CU YD</del>	<del>3.8</del>			<del>3.8</del>					
<del>50300255</del>	<del>CONCRETE SUPERSTRUCTURE</del>	<del>CU YD</del>	<del>4.2</del>			<del>4.2</del>					
<del>50800205</del>	<del>REINFORCEMENT BARS, EPOXY COATED</del>	<del>POUND</del>	<del>780</del>			<del>780</del>					
<del>50800515</del>	<del>BAR SPLICERS</del>	<del>EACH</del>	<del>12</del>			<del>12</del>					

\* SPECIALTY ITEM

MODEL: Default  
FILE NAME: P:\11048418\INTEC.illinois.gov\PROJECTS\Documents\DOT\_Offices\Bericz\_2\Projects\2017\11\CAD\Drawings\CAD\Sheets\22-ent-SQ.dgn

USER NAME = batesrl	DESIGNED - _____	REVISED - _____
PLOT SCALE = 200.0000' / in.	DRAWN - _____	REVISED - _____
PLOT DATE = Oct-19-2017 10:25:35 AM	CHECKED - _____	REVISED - _____
	DATE - _____	REVISED - _____

**STATE OF ILLINOIS  
DEPARTMENT OF TRANSPORTATION**

**SUMMARY OF QUANTITIES**

SCALE: \_\_\_\_\_ SHEET \_\_\_\_\_ OF \_\_\_\_\_ SHEETS STA. \_\_\_\_\_ TO STA. \_\_\_\_\_

F.A.P. RTE. 742	SECTION (38,39)RS-6	COUNTY OGLE	TOTAL SHEETS 135	SHEET NO. 7
CONTRACT NO. 64K27			ILLINOIS FED. AID PROJECT	

A L L - K

# SUMMARY OF QUANTITIES

CODE NO.	ITEM	UNIT	TOTAL QUANTITY	CONSTRUCTION CODE			
				80% FED 20% STATE ROADWAY	80% FED 20% STATE ROADWAY	80% FED 20% STATE BRIDGE	80% FED 20% STATE BRIDGE
				0005	0021	0047	0059
				RURAL	RURAL	S.N. 052-0063	RURAL
<del>52000110</del>	<del>PREFORMED JOINT STRIP SEAL</del>	<del>FOOT</del>	<del>82</del>				<del>82</del>
59000200	EPOXY CRACK INJECTION	FOOT	67			67	
* 63000001	STEEL PLATE BEAM GUARDRAIL, TYPE A, 6 FOOT POSTS	FOOT	200		200		
* 63000003	STEEL PLATE BEAM GUARDRAIL, TYPE A, 9 FOOT POSTS	FOOT	200		200		
* 63100085	TRAFFIC BARRIER TERMINAL, TYPE 6	EACH	4		4		
* 63100167	TRAFFIC BARRIER TERMINAL, TYPE 1 (SPECIAL) TANGENT	EACH	17		17		
63200310	GUARDRAIL REMOVAL	FOOT	1150		1150		
63301210	REMOVE AND REERECT STEEL PLATE BEAM GUARDRAIL, TYPE A	FOOT	9806		9806		
63500105	DELINEATORS	EACH	6		6		
64200108	SHOULDER RUMBLE STRIPS, 8 INCH	FOOT	73986		73986		
67000400	ENGINEER'S FIELD OFFICE, TYPE A	CAL MO	9	9			
67100100	MOBILIZATION	L SUM	1	1			
70100405	TRAFFIC CONTROL AND PROTECTION, STANDARD 701321	EACH	6			2	4
70100450	TRAFFIC CONTROL AND PROTECTION, STANDARD 701201	L SUM	1	1			

\* SPECIALTY ITEM

MODEL: Default  
FILE NAME: p:\110448\BID\INTEG-illinois.gov\FWDD\Documents\DOT-Office\District 2\Projects\2017\14\CAD\Drawings\CAD\Sheets\2017-2018\2017-2018-2019.dgn

14

USER NAME = batesrl	DESIGNED - _____	REVISED - _____
PLOT SCALE = 200.0000' / in.	CHECKED - _____	REVISED - _____
PLOT DATE = Oct-19-2017 01:49:25 PM	DATE - _____	REVISED - _____

**STATE OF ILLINOIS  
DEPARTMENT OF TRANSPORTATION**

**SUMMARY OF QUANTITIES**

SCALE: \_\_\_\_\_ SHEET \_\_\_\_\_ OF \_\_\_\_\_ SHEETS STA. \_\_\_\_\_ TO STA. \_\_\_\_\_

F.A.P. RTE. 742	SECTION (38,39)RS-6	COUNTY OGLE	TOTAL SHEETS 135	SHEET NO. 8
ILLINOIS FED. AID PROJECT			CONTRACT NO. 64K27	

A1-LU-16 REV

# SUMMARY OF QUANTITIES

CODE NO.	ITEM	UNIT	TOTAL QUANTITY	CONSTRUCTION CODE			
				80% FED 20% STATE ROADWAY	80% FED 20% STATE ROADWAY	80% FED 20% STATE BRIDGE	80% FED 20% STATE BRIDGE
				0005	0021	0047	0059
				RURAL	RURAL	S.N. 052-0063	RURAL
70100460	TRAFFIC CONTROL AND PROTECTION, STANDARD 701306	L SUM	1	1			
70102620	TRAFFIC CONTROL AND PROTECTION, STANDARD 701501	L SUM	1	1			
70102622	TRAFFIC CONTROL AND PROTECTION, STANDARD 701502	L SUM	1	1			
70103815	TRAFFIC CONTROL SURVEILLANCE	CAL DAY	10	10			
70106500	TEMPORARY BRIDGE TRAFFIC SIGNALS	EACH	4			4	
70300100	SHORT TERM PAVEMENT MARKING	FOOT	58339		58339		
70300150	SHORT TERM PAVEMENT MARKING REMOVAL	SQ FT	19446		19446		
70300210	TEMPORARY PAVEMENT MARKING LETTERS AND SYMBOLS	SQ FT	239		239		
70300220	TEMPORARY PAVEMENT MARKING - LINE 4"	FOOT	113863		113863		
70300250	TEMPORARY PAVEMENT MARKING - LINE 8"	FOOT	556		556		
70300280	TEMPORARY PAVEMENT MARKING - LINE 24"	FOOT	15		15		
70400100	TEMPORARY CONCRETE BARRIER	FOOT	2437			1232	1205
70400200	RELOCATE TEMPORARY CONCRETE BARRIER	FOOT	2805			1600	1205
70500630	TEMPORARY TRAFFIC BARRIER TERMINAL, TYPE 3	EACH	2			2	

\* SPECIALTY ITEM

MODEL: Default  
FILE NAME: p:\110418\BID\INTEC\Illinois.gov\FWD\DOT\Documents\110418\Project\201714\CADD\at\CA\Sheet\22-ent-500.dgn

USER NAME = batesrl	DESIGNED - _____	REVISED - _____	<b>STATE OF ILLINOIS DEPARTMENT OF TRANSPORTATION</b>	<b>SUMMARY OF QUANTITIES</b>	F.A.P. RTE. 742	SECTION (38,39)RS-6	COUNTY OGLE	TOTAL SHEETS 135	SHEET NO. 9		
PLOT SCALE = 200.0000' / in.	CHECKED - _____	REVISED - _____			SCALE: _____	SHEET _____ OF _____ SHEETS	STA. _____ TO STA. _____	ILLINOIS FED. AID PROJECT			
PLOT DATE = Oct-19-2017 10:26:06 AM	DATE - _____	REVISED - _____			REV						
1-4-19											

# SUMMARY OF QUANTITIES

CODE NO.	ITEM	UNIT	TOTAL QUANTITY	CONSTRUCTION CODE			
				80% FED 20% STATE ROADWAY	80% FED 20% STATE ROADWAY	80% FED 20% STATE BRIDGE	80% FED 20% STATE BRIDGE
				0005	0021	0047	0059
				RURAL	RURAL	S.N. 052-0063	RURAL
70600250	IMPACT ATTENUATORS, TEMPORARY (NON- REDIRECTIVE), TEST LEVEL 3	EACH	6			2	4
70600350	IMPACT ATTENUATORS, RELOCATE (NON- REDIRECTIVE), TEST LEVEL 3	EACH	8			4	4
* 72501000	TERMINAL MARKER - DIRECT APPLIED	EACH	23		23		
* 78000100	THERMOPLASTIC PAVEMENT MARKING - LETTERS AND SYMBOLS	SQ FT	1305		1305		
* 78000200	THERMOPLASTIC PAVEMENT MARKING - LINE 4"	FOOT	30815		30815		
* 78000400	THERMOPLASTIC PAVEMENT MARKING - LINE 6"	FOOT	865		865		
* 78000500	THERMOPLASTIC PAVEMENT MARKING - LINE 8"	FOOT	4539		4539		
* 78000600	THERMOPLASTIC PAVEMENT MARKING - LINE 12"	FOOT	1848		1848		
* 78000650	THERMOPLASTIC PAVEMENT MARKING - LINE 24"	FOOT	148		148		
* 78001110	PAINT PAVEMENT MARKING - LINE 4"	FOOT	476654		476654		
* 78100100	RAISED REFLECTIVE PAVEMENT MARKER	EACH	1364		1364		
	78200005 GUARDRAIL REFLECTORS, TYPE A	EACH	25		25		
	78300200 RAISED REFLECTIVE PAVEMENT MARKER REMOVAL	EACH	729		729		
Z0006014	BRIDGE DECK LATEX CONCRETE OVERLAY, 2 1/2 INCHES	SQ YD	1649				1649
Z0012130	BRIDGE DECK SCARIFICATION 3/4"	SQ YD	2251				2251

\* SPECIALTY ITEM

MODEL: Default  
FILE NAME: p:\1104\BID\INTEC\Illinois.gov\PROJECT\Documents\DOT\_Offices\Bids\2\Projects\2017\14\CAD\Drawings\2017\14\CD\Sheet202-ent-500.dgn

14

USER NAME = batesrl PLOT SCALE = 200.0000' / in. PLOT DATE = Oct-19-2017 10:27:28 AM	DESIGNED - _____ DRAWN - _____ CHECKED - _____ DATE - _____	REVISED - _____ REVISED - _____ REVISED - _____ REVISED - _____	<b>STATE OF ILLINOIS</b> <b>DEPARTMENT OF TRANSPORTATION</b>	<b>SUMMARY OF QUANTITIES</b> SCALE: _____ SHEET _____ OF _____ SHEETS STA. _____ TO STA. _____	F.A.P. RTE. 742 SECTION (38,39)RS-6 COUNTY OGLE TOTAL SHEETS 135 SHEET NO. 10 CONTRACT NO. 64K27 ILLINOIS FED. AID PROJECT
--	--	--	---	---	--

- A. 1. 11. 10 REV

# SUMMARY OF QUANTITIES

CODE NO.	ITEM	UNIT	TOTAL QUANTITY	CONSTRUCTION CODE							
				80% FED 20% STATE ROADWAY 0005 RURAL	80% FED 20% STATE ROADWAY 0021 RURAL	80% FED 20% STATE BRIDGE 0047 S.N. 052-0063	80% FED 20% STATE BRIDGE 0059 RURAL				
				Z0012164	BRIDGE DECK MICROSILICA CONCRETE OVERLAY 2 1/2"	SQ YD	602				602
				Z0013798	CONSTRUCTION LAYOUT	L SUM	1	1			
Z0016200	DECK SLAB REPAIR (PARTIAL)	SQ YD	450			450					
Z0028415	GEOTECHNICAL REINFORCEMENT	SQ YD	130	130							
Z0029090	DIAMOND GRINDING (BRIDGE SECTION)	SQ YD	2251				2251				
Z0033700	LONGITUDINAL JOINT SEALANT	FOOT	34594	34594							
Z0034105	MATERIAL TRANSFER DEVICE	TON	37930	37930							
Z0041895	POLYMER CONCRETE	CU FT	7.4				7.4				
Z0048665	RAILROAD PROTECTIVE LIABILITY INSURANCE	L SUM	1	1							
X0326697	CENTER LINE - RUMBLE STRIP - 8"	FOOT	7200		7200						
X0327980	PAVEMENT MARKING REMOVAL - WATER BLASTING	SQ FT	7188		7188						
X2110100	TOPSOIL FURNISH AND PLACE, SPECIAL	CU YD	651	651							
X4400196	HOT-MIX ASPHALT SURFACE REMOVAL, SPECIAL	SQ YD	1964	1964							
X4401198	HOT-MIX ASPHALT SURFACE REMOVAL, VARIABLE DEPTH	SQ YD	1665	1665							

\* SPECIALTY ITEM

MODEL: Default  
FILE NAME: p:\1104\BID\INTEC.illinois.gov\FWD\DOT\Documents\DOT\_Offices\Beric\_2\Projects\2017\14\CADD\data\CAD\sheet02-zht-500.dgn

USER NAME = batesrl	DESIGNED - _____	REVISED - _____
PLOT SCALE = 200.0000' / in.	DRAWN - _____	REVISED - _____
PLOT DATE = Oct-19-2017 10:27:43 AM	CHECKED - _____	REVISED - _____
	DATE - _____	REVISED - _____

**STATE OF ILLINOIS  
DEPARTMENT OF TRANSPORTATION**

**SUMMARY OF QUANTITIES**

SCALE: \_\_\_\_\_ SHEET \_\_\_\_\_ OF \_\_\_\_\_ SHEETS STA. \_\_\_\_\_ TO STA. \_\_\_\_\_

F.A.P. RTE. 742	SECTION (38,39)RS-6	COUNTY OGLE	TOTAL SHEETS 135	SHEET NO. 11
CONTRACT NO. 64K27			ILLINOIS FED. AID PROJECT	

11-10



# SUMMARY OF QUANTITIES

CODE NO.	ITEM	UNIT	TOTAL QUANTITY	CONSTRUCTION CODE			
				80% FED 20% STATE ROADWAY	80% FED 20% STATE ROADWAY	80% FED 20% STATE BRIDGE	80% FED 20% STATE BRIDGE
				0005	0021	0047	0059
				RURAL	RURAL	S.N. 052-0063	RURAL
X5030250	BRIDGE DECK GROOVING (LONGITUDINAL)	SQ YD	808				808
X7010216	TRAFFIC CONTROL AND PROTECTION, (SPECIAL)	L SUM	1	1			
X7015005	CHANGEABLE MESSAGE SIGN	CAL DAY	340	340			
X7030005	TEMPORARY PAVEMENT MARKING REMOVAL	SQ FT	1510		1510		

\* SPECIALTY ITEM

MODEL: Default  
FILE NAME: p:\w\1084\EBID\INTEG.illinois.gov\PWIDOT\Documents\DOT\_Offices\Beric. 2\Projects\2017\14\CAD\data\CAD\sheet02-shs-500.dgn

USER NAME = batesrl	DESIGNED - _____	REVISED - _____
DRAWN - _____	REVISIONS - _____	
PLOT SCALE = 200.0000' / in.	CHECKED - _____	REVISED - _____
PLOT DATE = Oct-19-2017 10:28:37 AM	DATE - _____	REVISED - _____

**STATE OF ILLINOIS  
DEPARTMENT OF TRANSPORTATION**

**SUMMARY OF QUANTITIES**

SCALE: \_\_\_\_\_ SHEET \_\_\_\_\_ OF \_\_\_\_\_ SHEETS STA. \_\_\_\_\_ TO STA. \_\_\_\_\_

F.A.P. RTE. 742	SECTION (38,39)RS-6	COUNTY OGLE	TOTAL SHEETS 135	SHEET NO. 12
ILLINOIS FED. AID PROJECT			CONTRACT NO. 64K27	

1-4-18

# SCHEDULE OF QUANTITIES

### 20200100 EARTH EXCAVATION

CU YD	LOCATION	STATION	REMARKS
88.67	LT	7 + 49 - 9 + 77	DETOUR ROUTE WIDENING
191.39	RT	8 + 63 - 11 + 28	DETOUR ROUTE WIDENING
<u>280.06</u>	TOTAL		

### 20400800 FURNISHED EXCAVATION

CU YD	LOCATION	STATION	REMARKS
300.00	LT/RT	6 + 06 - 506 + 19	AS NEEDED FOR REPLACEMENT OF GUARDRAIL TERMINALS
<u>300.00</u>	TOTAL		

### 25000110 SEEDING, CLASS 1A

ACRE	LOCATION	STATION	REMARKS
0.01	LT/RT	96 + 12 - 108 + 12	AT TOPSOIL, FURNISH & PLACE LOCATIONS
0.12	LT/RT	123 + 03 - 253 + 60	AT TOPSOIL, FURNISH & PLACE LOCATIONS
0.07	LT/RT	270 + 90 - 345 + 13	AT TOPSOIL, FURNISH & PLACE LOCATIONS
0.03	LT/RT	380 + 90 - 413 + 25	AT TOPSOIL, FURNISH & PLACE LOCATIONS
<u>0.01</u>	LT/RT	483 + 39 - 497 + 82	AT TOPSOIL, FURNISH & PLACE LOCATIONS
0.24	TOTAL		

### 25000210 SEEDING, CLASS 2A

ACRE	LOCATION	STATION	REMARKS
0.20	LT/RT	6 + 06 - 506 + 19	AT FURNISHED EXC. LOCATIONS FOR GUARDRAIL TERMINALS
0.11	LT/RT	96 + 12 - 108 + 12	AT TOPSOIL, FURNISH & PLACE LOCATIONS
1.20	LT/RT	123 + 03 - 253 + 60	AT TOPSOIL, FURNISH & PLACE LOCATIONS
0.68	LT/RT	270 + 90 - 345 + 13	AT TOPSOIL, FURNISH & PLACE LOCATIONS
0.30	LT/RT	380 + 90 - 413 + 25	AT TOPSOIL, FURNISH & PLACE LOCATIONS
<u>0.13</u>	LT/RT	483 + 39 - 497 + 82	AT TOPSOIL, FURNISH & PLACE LOCATIONS
2.62	TOTAL		

### 25000400 NITROGEN FERTILIZER NUTRIENT

POUND	LOCATION	STATION	REMARKS
18.00	LT/RT	6 + 06 - 506 + 19	AT FURNISHED EXC. LOCATIONS FOR GUARDRAIL TERMINALS
10.91	LT/RT	96 + 12 - 108 + 12	AT TOPSOIL, FURNISH & PLACE LOCATIONS
118.70	LT/RT	123 + 03 - 253 + 60	AT TOPSOIL, FURNISH & PLACE LOCATIONS
67.48	LT/RT	270 + 90 - 345 + 13	AT TOPSOIL, FURNISH & PLACE LOCATIONS
29.41	LT/RT	380 + 90 - 413 + 25	AT TOPSOIL, FURNISH & PLACE LOCATIONS
<u>13.12</u>	LT/RT	483 + 39 - 497 + 82	AT TOPSOIL, FURNISH & PLACE LOCATIONS
257.62	TOTAL		

### 25000500 PHOSPHORUS FERTILIZER NUTRIENT

POUND	LOCATION	STATION	REMARKS
18.00	LT/RT	6 + 06 - 506 + 19	AT FURNISHED EXC. LOCATIONS FOR GUARDRAIL TERMINALS
10.91	LT/RT	96 + 12 - 108 + 12	AT TOPSOIL, FURNISH & PLACE LOCATIONS
118.70	LT/RT	123 + 03 - 253 + 60	AT TOPSOIL, FURNISH & PLACE LOCATIONS
67.48	LT/RT	270 + 90 - 345 + 13	AT TOPSOIL, FURNISH & PLACE LOCATIONS
29.41	LT/RT	380 + 90 - 413 + 25	AT TOPSOIL, FURNISH & PLACE LOCATIONS
<u>13.12</u>	LT/RT	483 + 39 - 497 + 82	AT TOPSOIL, FURNISH & PLACE LOCATIONS
257.62	TOTAL		

### 25000600 POTASSIUM FERTILIZER NUTRIENT

POUND	LOCATION	STATION	REMARKS
18.00	LT/RT	6 + 06 - 506 + 19	AT FURNISHED EXC. LOCATIONS FOR GUARDRAIL TERMINALS
10.91	LT/RT	96 + 12 - 108 + 12	AT TOPSOIL, FURNISH & PLACE LOCATIONS
118.70	LT/RT	123 + 03 - 253 + 60	AT TOPSOIL, FURNISH & PLACE LOCATIONS
67.48	LT/RT	270 + 90 - 345 + 13	AT TOPSOIL, FURNISH & PLACE LOCATIONS
29.41	LT/RT	380 + 90 - 413 + 25	AT TOPSOIL, FURNISH & PLACE LOCATIONS
<u>13.12</u>	LT/RT	483 + 39 - 497 + 82	AT TOPSOIL, FURNISH & PLACE LOCATIONS
257.62	TOTAL		

### 25000750 MOWING

ACRE	LOCATION	STATION	REMARKS
0.20	LT/RT	6 + 06 - 506 + 19	AT FURNISHED EXC. LOCATIONS FOR GUARDRAIL TERMINALS
0.12	LT/RT	96 + 12 - 108 + 12	AT TOPSOIL, FURNISH & PLACE LOCATIONS
1.32	LT/RT	123 + 03 - 253 + 60	AT TOPSOIL, FURNISH & PLACE LOCATIONS
0.75	LT/RT	270 + 90 - 345 + 13	AT TOPSOIL, FURNISH & PLACE LOCATIONS
0.33	LT/RT	380 + 90 - 413 + 25	AT TOPSOIL, FURNISH & PLACE LOCATIONS
<u>0.15</u>	LT/RT	483 + 39 - 497 + 82	AT TOPSOIL, FURNISH & PLACE LOCATIONS
2.86	TOTAL		

### 25100115 MULCH, METHOD 2

ACRE	LOCATION	STATION	REMARKS
0.20	LT/RT	6 + 06 - 506 + 19	AT FURNISHED EXC. LOCATIONS FOR GUARDRAIL TERMINALS
0.11	LT/RT	96 + 12 - 108 + 12	AT TOPSOIL, FURNISH & PLACE LOCATIONS
1.20	LT/RT	123 + 03 - 253 + 60	AT TOPSOIL, FURNISH & PLACE LOCATIONS
0.68	LT/RT	270 + 90 - 345 + 13	AT TOPSOIL, FURNISH & PLACE LOCATIONS
0.30	LT/RT	380 + 90 - 413 + 25	AT TOPSOIL, FURNISH & PLACE LOCATIONS
<u>0.13</u>	LT/RT	483 + 39 - 497 + 82	AT TOPSOIL, FURNISH & PLACE LOCATIONS
2.62	TOTAL		

### 25100630 EROSION CONTROL BLANKET

SO YD	LOCATION	STATION	REMARKS
53.33	LT/RT	96 + 12 - 108 + 12	AT TOPSOIL, FURNISH & PLACE LOCATIONS WITH SEEDING CLASS 1A
580.31	LT/RT	123 + 03 - 253 + 60	AT TOPSOIL, FURNISH & PLACE LOCATIONS WITH SEEDING CLASS 1A
329.91	LT/RT	270 + 90 - 345 + 13	AT TOPSOIL, FURNISH & PLACE LOCATIONS WITH SEEDING CLASS 1A
143.78	LT/RT	380 + 90 - 413 + 25	AT TOPSOIL, FURNISH & PLACE LOCATIONS WITH SEEDING CLASS 1A
<u>64.13</u>	LT/RT	483 + 39 - 497 + 82	AT TOPSOIL, FURNISH & PLACE LOCATIONS WITH SEEDING CLASS 1A
1171.47	TOTAL		

### 30300112 AGGREGATE SUBGRADE IMPROVEMENT 12"

SO YD	LOCATION	STATION	REMARKS
177.33	LT	7 + 49 - 9 + 77	DETOUR ROUTE WIDENING
382.78	RT	8 + 63 - 11 + 28	DETOUR ROUTE WIDENING
<u>200.00</u>		1L 2 PATCHING	AS DIRECTED BY THE ENGINEER
760.11	TOTAL		

### 40600275 BITUMINOUS MATERIALS (PRIME COAT)

POUND	LOCATION	STATION	REMARKS
342.00	LT	7 + 49 - 9 + 77	DETOUR ROUTE WIDENING
795.00	RT	8 + 63 - 11 + 28	DETOUR ROUTE WIDENING
<u>1137.00</u>	TOTAL		

### 40600290 BITUMINOUS MATERIALS (TACK COAT)

POUND	LOCATION	STATION	REMARKS
<del>480.00</del>	<del>LT/RT</del>	<del>119 + 95 - 121 + 15</del>	<del>FINAL TAPER TO BRIDGE DECK OVERLAY</del>
<del>120.00</del>	<del>LT/RT</del>	<del>123 + 03 - 124 + 23</del>	<del>TEMP. TAPER BRIDGE TO BINDER COURSE</del>
<del>480.00</del>	<del>LT/RT</del>	<del>123 + 03 - 124 + 23</del>	<del>FINAL TAPER FROM BRIDGE DECK OVERLAY</del>
480.00	LT/RT	254 + 18 - 255 + 38	FINAL TAPER TO BRIDGE DECK OVERLAY
480.00	LT/RT	256 + 41 - 257 + 61	FINAL TAPER FROM BRIDGE DECK OVERLAY
480.00	LT/RT	455 + 32 - 456 + 52	FINAL TAPER TO BRIDGE DECK OVERLAY
480.00	LT/RT	458 + 31 - 459 + 51	FINAL TAPER FROM BRIDGE DECK OVERLAY
480.00	LT/RT	460 + 54 - 461 + 74	FINAL TAPER TO BRIDGE DECK OVERLAY
480.00	LT/RT	463 + 50 - 464 + 70	FINAL TAPER FROM BRIDGE DECK OVERLAY
480.00	LT/RT	477 + 38 - 478 + 58	FINAL TAPER TO BRIDGE DECK OVERLAY
480.00	LT/RT	480 + 29 - 481 + 49	FINAL TAPER FROM BRIDGE DECK OVERLAY
34.20	LT	7 + 49 - 9 + 77	DETOUR ROUTE WIDENING
79.50	RT	8 + 63 - 11 + 28	DETOUR ROUTE WIDENING

3033.70 SUB-TOTAL  
**3954.**

2

MODEL: Default FILE NAME: d:\v\11084818\DOT\Documents\DOT\_Offices\District\_2\Projects\1204714\CAD\Drawings\Sheet\DOT\_Schedule.dgn

USER NAME = batesrl	DESIGNED -	REVISED -	<b>STATE OF ILLINOIS DEPARTMENT OF TRANSPORTATION</b>	<b>SCHEDULE OF QUANTITIES</b>			F.A.P. RTE. = 742	SECTION = (38.39)R5-6	COUNTY = OGLE	TOTAL SHEETS = 135	SHEET NO. = 28
PLOT SCALE = 200.0000' / in.	DRAWN -	REVISED -					SCALE:	SHEET	OF	SHEETS	STA.
PLOT DATE = Oct-11-2017 08:59:41 AM	CHECKED -	REVISED -		ILLINOIS FED. AID PROJECT							
	DATE -	REVISED -		14-18							

# SCHEDULE OF QUANTITIES

## 40600290 BITUMINOUS MATERIALS (TACK COAT) - CONTINUED

ADDITIONAL QUANTITY FOR JOINT TRIMMING			
POUND	LOCATION	STATION	REMARKS
12.04		6 + 06 - 15 + 69	
23.75		15 + 69 - 25 + 19	NB LEFT TURN LANE
64.43		25 + 19 - 42 + 37	VAR. 3-LANE SECTIONS
12.58		42 + 37 - 47 + 40	NB LEFT TURN LANE
17.46		47 + 40 - 61 + 37	
61.63		61 + 37 - 86 + 02	NB PASSING LANE
76.40		86 + 02 - 147 + 14	
62.50		147 + 14 - 172 + 14	SB PASSING LANE
13.88		172 + 14 - 183 + 24	
7.00		183 + 24 - 186 + 04	SB RIGHT TURN LANE
29.61		186 + 04 - 209 + 73	
7.00		209 + 73 - 212 + 53	SB RIGHT TURN LANE
53.56		212 + 53 - 255 + 38	
441.83		SUB-TOTAL	

TOTAL  
4396

## 40600527 LEVELING BINDER (HAND METHOD), IL-9.5FG, N50

TON	LOCATION	STATION	REMARKS
142.08		6 + 06 - 506 + 19	EST. 15 TON PER MILE
142.08		TOTAL	

## 40600627 LEVELING BINDER (MACHINE METHOD), IL-9.5FG, N50

TON	LOCATION	STATION	REMARKS
<del>44.8</del>	<del>LT/RT</del>	<del>119 + 95 - 121 + 15</del>	<del>FINAL TAPER TO BRIDGE DECK OVERLAY</del>
<del>44.8</del>	<del>LT/RT</del>	<del>123 + 03 - 124 + 23</del>	<del>FINAL TAPER FROM BRIDGE DECK OVERLAY</del>
44.8	LT/RT	254 + 18 - 255 + 38	FINAL TAPER TO BRIDGE DECK OVERLAY
44.8	LT/RT	256 + 41 - 257 + 61	FINAL TAPER FROM BRIDGE DECK OVERLAY
44.8	LT/RT	455 + 32 - 456 + 52	FINAL TAPER TO BRIDGE DECK OVERLAY
44.8	LT/RT	458 + 31 - 459 + 51	FINAL TAPER FROM BRIDGE DECK OVERLAY
44.8	LT/RT	460 + 54 - 461 + 74	FINAL TAPER TO BRIDGE DECK OVERLAY
44.8	LT/RT	463 + 50 - 464 + 70	FINAL TAPER FROM BRIDGE DECK OVERLAY
44.8	LT/RT	477 + 38 - 478 + 58	FINAL TAPER TO BRIDGE DECK OVERLAY
44.8	LT/RT	480 + 29 - 481 + 49	FINAL TAPER FROM BRIDGE DECK OVERLAY

TOTAL  
358

## 40600985 PORTLAND CEMENT CONCRETE SURFACE REMOVAL - BUTT JOINT

SO YD	LOCATION	STATION
100.00		505 + 52 - 506 + 19
100.00		TOTAL

## 40603080 HOT-MIX ASPHALT BINDER COURSE, IL-19.0, N50

TON	LOCATION	STATION	REMARKS
34.05	LT	7 + 49 - 9 + 77	DETOUR ROUTE WIDENING
79.15	RT	8 + 63 - 11 + 28	DETOUR ROUTE WIDENING
113.19		TOTAL	

## 40603310 HOT-MIX ASPHALT SURFACE COURSE, MIX "C", N50

TON	LOCATION	STATION	REMARKS
<del>44.80</del>	<del>LT/RT</del>	<del>119 + 95 - 121 + 15</del>	<del>FINAL TAPER TO BRIDGE DECK OVERLAY</del>
<del>59.73</del>	<del>LT/RT</del>	<del>123 + 03 - 124 + 23</del>	<del>TEMP. TAPER BRIDGE TO BINDER COURSE</del>
<del>44.80</del>	<del>LT/RT</del>	<del>123 + 03 - 124 + 23</del>	<del>FINAL TAPER FROM BRIDGE DECK OVERLAY</del>
44.80	LT/RT	254 + 18 - 255 + 38	FINAL TAPER TO BRIDGE DECK OVERLAY
44.80	LT/RT	256 + 41 - 257 + 61	FINAL TAPER FROM BRIDGE DECK OVERLAY
44.80	LT/RT	455 + 32 - 456 + 52	FINAL TAPER TO BRIDGE DECK OVERLAY
44.80	LT/RT	458 + 31 - 459 + 51	FINAL TAPER FROM BRIDGE DECK OVERLAY
44.80	LT/RT	460 + 54 - 461 + 74	FINAL TAPER TO BRIDGE DECK OVERLAY
44.80	LT/RT	463 + 50 - 464 + 70	FINAL TAPER FROM BRIDGE DECK OVERLAY
44.80	LT/RT	477 + 38 - 478 + 58	FINAL TAPER TO BRIDGE DECK OVERLAY
44.80	LT/RT	480 + 29 - 481 + 49	FINAL TAPER FROM BRIDGE DECK OVERLAY
17.02	LT	7 + 49 - 9 + 77	DETOUR ROUTE WIDENING
39.57	RT	8 + 63 - 11 + 28	DETOUR ROUTE WIDENING
564.33		SUBTOTAL	
415.			

## ADDITIONAL QUANTITY FOR JOINT TRIMMING

TON	LOCATION	STATION	REMARKS
4.49		6 + 06 - 15 + 69	
8.87		15 + 69 - 25 + 19	NB LEFT TURN LANE
24.05		25 + 19 - 42 + 37	VAR. 3-LANE SECTIONS
4.69		42 + 37 - 47 + 40	NB LEFT TURN LANE
6.52		47 + 40 - 61 + 37	
23.01		61 + 37 - 86 + 02	NB PASSING LANE
28.52		86 + 02 - 147 + 14	
23.33		147 + 14 - 172 + 14	SB PASSING LANE
5.18		172 + 14 - 183 + 24	
2.61		183 + 24 - 186 + 04	SB RIGHT TURN LANE
11.06		186 + 04 - 209 + 73	
2.61		209 + 73 - 212 + 53	SB RIGHT TURN LANE
20.00		212 + 53 - 255 + 38	
164.95		SUBTOTAL	

TOTAL  
580

## 48102100 AGGREGATE WEDGE SHOULDER, TYPE B

TON	LOCATION	STATION	REMARKS
18.00	LT	497 + 82 - 506 + 19	
500.00	RT/LT	0 + 00 - 660 + 00	DETOUR ROUTE LOCATIONS AS DIRECTED BY THE ENGINEER
8.66	LT	7 + 49 - 9 + 77	DETOUR ROUTE WIDENING
10.06	RT	8 + 63 - 11 + 28	DETOUR ROUTE WIDENING
3.16	LT	577 + 35 - 578 + 60	PINES ROAD
1.77	LT	578 + 90 - 579 + 60	PINES ROAD
2.15	LT	585 + 30 - 586 + 15	PINES ROAD
18.22	LT	586 + 60 - 593 + 80	PINES ROAD
0.33	RT	577 + 35 - 577 + 48	PINES ROAD
16.70	RT	577 + 80 - 584 + 40	PINES ROAD
22.27	RT	585 + 00 - 593 + 80	PINES ROAD
5.06	LT	612 + 10 - 614 + 10	PINES ROAD
5.06	RT	612 + 10 - 614 + 10	PINES ROAD
611.45		TOTAL	

## 63000001 STEEL PLATE BEAM GUARDRAIL, TYPE A, 6 FOOT POSTS

FOOT	LOCATION	STATION	REMARKS
200	LT/RT	6 + 06 - 506 + 19	AS DIRECTED BY THE ENGINEER
200		TOTAL	

MODEL: D:\dwg\illinois\DOT\Documents\DOT\_Offices\District 2\Projects\2017\14\CADData\CAD\sheet\DOT\_SHT-Schedule.dgn  
 FILE NAME: dwg\1104E4EB\DOT\_SHT-Schedule.dgn

USER NAME = batesrl	DESIGNED -	REVISED -
PLOT SCALE = 200.0000' / In.	DRAWN -	REVISED -
PLOT DATE = Oct-11-2017 08:59:55 AM	CHECKED -	REVISED -
	DATE -	REVISED -

**STATE OF ILLINOIS  
DEPARTMENT OF TRANSPORTATION**

**SCHEDULE OF QUANTITIES**

SCALE: SHEET OF SHEETS STA. TO STA.

F.A.P. RTE. 742	SECTION (38,39)RS-6	COUNTY OGLE	TOTAL SHEETS 135	SHEET NO. 29
CONTRACT NO. 64K27				ILLINOIS FED. AID PROJECT

A 1-4-18

# SCHEDULE OF QUANTITIES

## 70300100 SHORT TERM PAVEMENT MARKING - CONTINUED

YELLOW			
FOOT	LOCATION	STATION	REMARKS
605	CL	6 + 06 - 16 + 15	NPZ - DOUBLE
814	LT/RT	16 + 15 - 29 + 72	MEDIAN - DOUBLE
242	LT/RT	29 + 72 - 33 + 76	BI-DIRECTIONAL - DOUBLE
783	LT/RT	33 + 76 - 46 + 81	MEDIAN - DOUBLE
402	CL	46 + 81 - 60 + 20	SKIP DASH
1578	CL	60 + 20 - 86 + 50	NPZ - DOUBLE
557	CL	86 + 50 - 105 + 07	SKIP DASH
965	CL	105 + 07 - 121 + 15	NPZ - DOUBLE
3675	CL	123 + 03 - 184 + 28	NPZ - DOUBLE
1312	CL	184 + 28 - 228 + 00	SKIP DASH
1536	CL	228 + 00 - 253 + 60	NPZ - DOUBLE
101	CL	256 + 41 - 258 + 10	NPZ - DOUBLE
702	LT/RT	258 + 10 - 269 + 80	MEDIAN - DOUBLE
4520	CL	269 + 80 - 345 + 13	NPZ - DOUBLE
1436	LT/RT	345 + 13 - 369 + 07	MEDIAN - DOUBLE
753	CL	369 + 07 - 381 + 62	NPZ - DOUBLE
579	CL	381 + 62 - 400 + 91	SKIP DASH
3337	CL	400 + 91 - 456 + 52	NPZ - DOUBLE
1793	LT/RT	414 + 23 - 444 + 11	MEDIAN - DOUBLE
745	CL	444 + 11 - 456 + 52	NPZ - DOUBLE
146	CL	458 + 31 - 460 + 75	NPZ - DOUBLE
30	CL	460 + 75 - 461 + 74	SKIP DASH
101	CL	463 + 50 - 466 + 86	SKIP DASH
352	CL	466 + 86 - 478 + 58	SKIP DASH
777	CL	480 + 29 - 506 + 19	SKIP DASH
<u>27840</u>	SUB-TOTAL --- YELLOW		
<u>58339</u>	TOTAL		

## 70300150 SHORT TERM PAVEMENT MARKING REMOVAL

SO FT	LOCATION	STATION
<u>19446</u>		6 + 06 - 506 + 19
19446		

## 70300210 TEMPORARY PAVEMENT MARKING LETTERS AND SYMBOLS

SO FT	LOCATION	STATION	REMARKS
WHITE			
41.5	LT	155 + 60	SB LANE DROP ARROW
41.5	LT	158 + 35	SB LANE DROP ARROW
15.6	LT	183 + 39	RIGHT TURN ARROW TO PENN CORNER RD
15.6	LT	183 + 96	RIGHT TURN ARROW TO PENN CORNER RD
15.6	RT	211 + 68	RIGHT TURN ARROW TO HIDDEN HEIGHTS RD
15.6	RT	212 + 33	RIGHT TURN ARROW TO HIDDEN HEIGHTS RD
15.6	RT	314 + 60	RIGHT TURN ARROW
15.6	RT	315 + 18	RIGHT TURN ARROW
15.6	RT	401 + 73	RIGHT TURN ARROW TO BROOKS ISLAND RD
15.6	RT	402 + 48	RIGHT TURN ARROW TO BROOKS ISLAND RD
15.6	RT	493 + 57	RIGHT TURN ARROW TO COUNTY FARM RD
<u>15.6</u>	RT	494 + 26	RIGHT TURN ARROW TO COUNTY FARM RD
<u>239</u>	TOTAL		

## 70300220 TEMPORARY PAVEMENT MARKING - LINE 4"

WHITE			
FOOT	LOCATION	STATION	REMARKS
2400	LT/RT	96 + 12 - 108 + 12	AFTER PLACEMENT OF HMA BINDER COURSE
<del>952</del>		<del>119 + 71 - 124 + 47</del>	<del>PLACED ACCORDING TO HIGHWAY STANDARD 701321 (2 TIMES)</del>
<del>240</del>	LT/RT	<del>119 + 95 - 121 + 15</del>	<del>FINAL TAPER TO BRIDGE DECK OVERLAY</del>
<del>240</del>	LT/RT	<del>123 + 03 - 124 + 23</del>	<del>FINAL TAPER FROM BRIDGE DECK OVERLAY</del>
26114	LT/RT	123 + 03 - 253 + 60	AFTER PLACEMENT OF HMA BINDER COURSE
423	LT	153 + 13 - 170 + 04	SB PASSING LANE - SKIP DASH
782		253 + 94 - 257 + 85	PLACED ACCORDING TO HIGHWAY STANDARD 701321 (2 TIMES)
240	LT/RT	254 + 18 - 255 + 38	FINAL TAPER TO BRIDGE DECK OVERLAY
240	LT/RT	256 + 41 - 257 + 61	FINAL TAPER FROM BRIDGE DECK OVERLAY
14846	LT/RT	270 + 90 - 345 + 13	AFTER PLACEMENT OF HMA BINDER COURSE
6470	LT/RT	380 + 90 - 413 + 25	AFTER PLACEMENT OF HMA BINDER COURSE
934		455 + 08 - 459 + 75	PLACED ACCORDING TO HIGHWAY STANDARD 701321 (2 TIMES)
240	LT/RT	455 + 32 - 456 + 52	FINAL TAPER TO BRIDGE DECK OVERLAY
240	LT/RT	458 + 31 - 459 + 51	FINAL TAPER FROM BRIDGE DECK OVERLAY
928		460 + 30 - 464 + 94	PLACED ACCORDING TO HIGHWAY STANDARD 701321 (2 TIMES)
240	LT/RT	460 + 54 - 461 + 74	FINAL TAPER TO BRIDGE DECK OVERLAY
240	LT/RT	463 + 50 - 464 + 70	FINAL TAPER FROM BRIDGE DECK OVERLAY
918		477 + 14 - 481 + 73	PLACED ACCORDING TO HIGHWAY STANDARD 701321 (2 TIMES)
240	LT/RT	477 + 38 - 478 + 58	FINAL TAPER TO BRIDGE DECK OVERLAY
240	LT/RT	480 + 29 - 481 + 49	FINAL TAPER FROM BRIDGE DECK OVERLAY
2886	LT/RT	483 + 39 - 497 + 82	AFTER PLACEMENT OF HMA BINDER COURSE
<del>60853</del>	SUB-TOTAL --- WHITE		
<u>58621</u>	TOTAL		

YELLOW			
FOOT	LOCATION	STATION	REMARKS
118		96 + 12 - 100 + 85	NB & SB SKIP DASH
528		100 + 85 - 105 + 07	NB NPZ SOLID/SB SKIP DASH
610		105 + 07 - 108 + 12	NB & SB NPZ - DOUBLE SOLID
240		119 + 95 - 121 + 15	NB & SB NPZ - DOUBLE SOLID
240		123 + 03 - 124 + 23	NB & SB NPZ - DOUBLE SOLID
12250		123 + 03 - 184 + 28	NB & SB NPZ - DOUBLE SOLID
290		184 + 28 - 195 + 89	NB & SB SKIP DASH
952		195 + 89 - 203 + 50	NB NPZ SOLID/SB SKIP DASH
45		203 + 50 - 205 + 30	NB & SB SKIP DASH
1009		205 + 30 - 213 + 37	SB NPZ SOLID/NB SKIP DASH
203		213 + 37 - 221 + 50	NB & SB SKIP DASH
813		221 + 50 - 228 + 00	NB NPZ SOLID/SB SKIP DASH
5120		228 + 00 - 253 + 60	NB & SB NPZ - DOUBLE SOLID
240		254 + 18 - 255 + 38	NB & SB NPZ - DOUBLE SOLID
240		256 + 41 - 257 + 61	NB & SB NPZ - DOUBLE SOLID
14846		270 + 90 - 345 + 13	NB & SB NPZ - DOUBLE SOLID
144		380 + 90 - 381 + 62	NB & SB NPZ - DOUBLE SOLID
1109		381 + 62 - 390 + 49	NB NPZ SOLID/SB SKIP DASH
1303		390 + 49 - 400 + 91	SB NPZ SOLID/NB SKIP DASH
2468		400 + 91 - 413 + 25	NB & SB NPZ - DOUBLE SOLID
240		455 + 32 - 456 + 52	NB & SB NPZ - DOUBLE SOLID
240		458 + 31 - 459 + 51	NB & SB NPZ - DOUBLE SOLID
42		460 + 54 - 460 + 75	NB & SB NPZ - DOUBLE SOLID
124		460 + 75 - 461 + 74	NB NPZ SOLID/SB SKIP DASH
150		463 + 50 - 464 + 70	NB NPZ SOLID/SB SKIP DASH
30		477 + 38 - 478 + 58	NB & SB SKIP DASH
30		480 + 29 - 481 + 49	NB & SB SKIP DASH
355		483 + 39 - 497 + 60	NB & SB SKIP DASH
28		497 + 60 - 497 + 82	NB NPZ SOLID/SB SKIP DASH
<u>44007</u>	SUB-TOTAL --- YELLOW		
<u>104668</u>	TOTAL		

MODEL: D:\p\m\...  
 FILE NAME: ...  
 PROJECT: ...  
 PLOT DATE: ...

USER NAME = batesrl PLOT SCALE = 200.0000" / in. PLOT DATE = Oct-11-2017 09:00:27 AM	DESIGNED - DRAWN - CHECKED - DATE -	REVISED - REVISED - REVISED - REVISED -	STATE OF ILLINOIS DEPARTMENT OF TRANSPORTATION	SCHEDULE OF QUANTITIES	F.A.P. RTE. = 742 SECTION = (38.39)RS-6 COUNTY = OGLE TOTAL SHEETS = 135 SHEET NO. = 31 CONTRACT NO. 64K27 ILLINOIS FED. AID PROJECT
--	--	--	---	------------------------	--

1-4-18

# SCHEDULE OF QUANTITIES

## 70300250 TEMPORARY PAVEMENT MARKING - LINE 8"

WHITE			
FOOT	LOCATION	STATION	REMARKS
100	LT	183 + 24 - 184 + 24	RIGHT TURN LANE LINE
100	RT	211 + 53 - 212 + 53	RIGHT TURN LANE LINE
20	RT	313 + 65 - 314 + 45	RIGHT TURN LANE - 2' TURKEY TRACKS
100	RT	314 + 45 - 315 + 45	RIGHT TURN LANE LINE
36	RT	400 + 15 - 401 + 58	RIGHT TURN LANE - 2' TURKEY TRACKS
110	RT	401 + 58 - 402 + 68	RIGHT TURN LANE LINE
100	RT	493 + 47 - 494 + 47	RIGHT TURN LANE LINE
<u>566</u>	TOTAL		

## 70300280 TEMPORARY PAVEMENT MARKING - LINE 24"

WHITE			
FOOT	LOCATION	STATION	REMARKS
15	LT	486 + 55 - 486 + 70	Stop Bar - CE
<u>15</u>	TOTAL		

## 70400100 TEMPORARY CONCRETE BARRIER

A			
FOOT	LOCATION	STATION	REMARKS
<del>332</del>		<del>120 + 43 - 123 + 75</del>	<del>PLACED ACCORDING TO HIGHWAY STANDARD 701321</del>
247		254 + 66 - 257 + 13	PLACED ACCORDING TO HIGHWAY STANDARD 701321
323		455 + 80 - 459 + 03	PLACED ACCORDING TO HIGHWAY STANDARD 701321
320		461 + 02 - 464 + 22	PLACED ACCORDING TO HIGHWAY STANDARD 701321
315		477 + 86 - 481 + 01	PLACED ACCORDING TO HIGHWAY STANDARD 701321

1537  
1205

## 70400100 RELOCATE TEMPORARY CONCRETE BARRIER

A			
FOOT	LOCATION	STATION	REMARKS
<del>332</del>		<del>120 + 43 - 123 + 75</del>	<del>PLACED ACCORDING TO HIGHWAY STANDARD 701321</del>
247		254 + 66 - 257 + 13	PLACED ACCORDING TO HIGHWAY STANDARD 701321
323		455 + 80 - 459 + 03	PLACED ACCORDING TO HIGHWAY STANDARD 701321
320		461 + 02 - 464 + 22	PLACED ACCORDING TO HIGHWAY STANDARD 701321
315		477 + 86 - 481 + 01	PLACED ACCORDING TO HIGHWAY STANDARD 701321

1537  
1205

## 70600250 IMPACT ATTENUATORS, TEMPORARY (NON-REDIRECTIVE), TEST LEVEL 3

A			
EACH	LOCATION	STATION	REMARKS
<del>1</del>		<del>123 + 75</del>	<del>PLACED ACCORDING TO HIGHWAY STANDARD 701321</del>
1		257 + 13	PLACED ACCORDING TO HIGHWAY STANDARD 701321
1		459 + 03	PLACED ACCORDING TO HIGHWAY STANDARD 701321
1		464 + 22	PLACED ACCORDING TO HIGHWAY STANDARD 701321
1		481 + 01	PLACED ACCORDING TO HIGHWAY STANDARD 701321

5  
4

## 70600350 IMPACT ATTENUATORS, RELOCATE (NON-REDIRECTIVE), TEST LEVEL 3

A			
EACH	LOCATION	STATION	REMARKS
<del>1</del>		<del>123 + 75</del>	<del>PLACED ACCORDING TO HIGHWAY STANDARD 701321</del>
1		257 + 13	PLACED ACCORDING TO HIGHWAY STANDARD 701321
1		459 + 03	PLACED ACCORDING TO HIGHWAY STANDARD 701321
1		464 + 22	PLACED ACCORDING TO HIGHWAY STANDARD 701321
1		481 + 01	PLACED ACCORDING TO HIGHWAY STANDARD 701321

5  
4

## 72501000 TERMINAL MARKER - DIRECT APPLIED

EACH	LOCATION	STATION	REMARKS
1	RT	254 + 42	071-0081 SE QUADRANT
1	LT	254 + 72	071-0081 SW QUADRANT
1	RT	257 + 08	071-0081 NE QUADRANT
1	LT	257 + 34	071-0081 NW QUADRANT
1	RT	455 + 90	071-0076 SE QUADRANT
1	LT	456 + 13	071-0076 SW QUADRANT
1	RT	458 + 71	071-0076 NE QUADRANT
1	RT	460 + 24	
1	LT	461 + 20	071-0075 SW QUADRANT
1	RT	461 + 29	
1	RT	461 + 76	071-0075 SE QUADRANT
1	LT	463 + 93	071-0075 NW QUADRANT
1	RT	464 + 07	071-0075 NE QUADRANT
1	LT	478 + 07	071-0074 SW QUADRANT
1	RT	478 + 07	071-0074 SE QUADRANT
1	RT	480 + 80	071-0074 NE QUADRANT
1	LT	480 + 80	071-0074 NW QUADRANT
6		DETOUR	AS DIRECTED BY THE ENGINEER
<u>23</u>	TOTAL		

## 78000100 THERMOPLASTIC PAVEMENT MARKING - LETTERS AND SYMBOLS

WHITE			
SO FT	LOCATION	STATION	REMARKS
15.6	RT	20 + 43	LEFT TURN ARROW
15.6	RT	21 + 34	LEFT TURN ARROW
15.6	RT	22 + 25	LEFT TURN ARROW
15.6	RT	26 + 94	LEFT TURN ARROW
15.6	RT	27 + 81	LEFT TURN ARROW
15.6	RT	28 + 68	LEFT TURN ARROW
15.6	RT	26 + 94	RIGHT TURN ARROW
15.6	RT	27 + 81	RIGHT TURN ARROW
15.6	RT	28 + 68	RIGHT TURN ARROW
15.6	RT	29 + 96	BI-DIRECTIONAL LEFT ARROW
15.6	RT	30 + 11	BI-DIRECTIONAL LEFT ARROW
15.6	RT	31 + 58	BI-DIRECTIONAL LEFT ARROW
15.6	RT	31 + 74	BI-DIRECTIONAL LEFT ARROW
15.6	RT	33 + 33	BI-DIRECTIONAL LEFT ARROW
15.6	RT	33 + 49	BI-DIRECTIONAL LEFT ARROW
15.6	RT	34 + 88	LEFT TURN ARROW
15.6	RT	35 + 25	LEFT TURN ARROW
15.6	RT	35 + 69	LEFT TURN ARROW
15.6	RT	37 + 14	LEFT TURN ARROW
15.6	RT	37 + 80	LEFT TURN ARROW
15.6	RT	38 + 30	LEFT TURN ARROW
15.6	LT	39 + 43	RIGHT TURN ARROW
15.6	LT	39 + 90	RIGHT TURN ARROW
15.6	LT	40 + 66	RIGHT TURN ARROW
15.6	RT	42 + 16	LEFT TURN ARROW
15.6	RT	42 + 50	LEFT TURN ARROW
15.6	RT	42 + 93	LEFT TURN ARROW
41.5	RT	76 + 83	NB LANE DROP ARROW
41.5	RT	79 + 18	NB LANE DROP ARROW
41.5	LT	155 + 60	SB LANE DROP ARROW
41.5	LT	158 + 35	SB LANE DROP ARROW
<u>587.2</u>	SUBTOTAL		

MODEL: Default FILE NAME: d:\11044EBD\INTEC\Illinois.gov\FV\DOT\Documents\DOT\_Offices\District\_2\Projects\10204714\CADD\data\CAD\sheet\02-shi-schedule.dgn

USER NAME = batesrl	DESIGNED -	REVISED -	<b>STATE OF ILLINOIS DEPARTMENT OF TRANSPORTATION</b>	<b>SCHEDULE OF QUANTITIES</b>			F.A.P. RTE. 742	SECTION (38,39)RS-6	COUNTY OGLE	TOTAL SHEETS 135	SHEET NO. 32
PLOT SCALE = 200.0000' / in.	DRAWN -	REVISED -					SCALE:	SHEET OF SHEETS	STA. TO STA.	CONTRACT NO. 64K27	
PLOT DATE = Oct-11-2017 09:00:43 AM	CHECKED -	REVISED -		ILLINOIS FED. AID PROJECT							
	DATE -	REVISED -		12 1-4-18							

# SCHEDULE OF QUANTITIES

**X4400196 HOT-MIX ASPHALT SURFACE REMOVAL, SPECIAL**

JOINT TRIMMING

SO YD	LOCATION	STATION	REMARKS
53.50		6 + 06 - 15 + 69	
105.56		15 + 69 - 25 + 19	NB LEFT TURN LANE
286.33		25 + 19 - 42 + 37	VAR. 3-LANE SECTIONS
55.89		42 + 37 - 47 + 40	NB LEFT TURN LANE
77.61		47 + 40 - 61 + 37	
273.89		61 + 37 - 86 + 02	NB PASSING LANE
339.56		86 + 02 - 147 + 14	
277.78		147 + 14 - 172 + 14	SB PASSING LANE
61.67		172 + 14 - 183 + 24	
31.11		183 + 24 - 186 + 04	SB RIGHT TURN LANE
131.61		186 + 04 - 209 + 73	
31.11		209 + 73 - 212 + 53	SB RIGHT TURN LANE
<u>238.06</u>		212 + 53 - 255 + 38	
1963.67			

**X4401198 HOT-MIX ASPHALT SURFACE REMOVAL, VARIABLE DEPTH**

SO YD	LOCATION	STATION	REMARKS
533.33	LT/RT	123 + 03 - 124 + 23	TEMP. TAPER REMOVAL
234.67	RT	503 + 55 - 506 + 19	
266.67	LT	579 + 00 - 585 + 00	PINES ROAD OVERLAY WITH CURB & GUTTER
381.11		607 + 54 - 610 + 97	PINES ROAD RESURF. WITH GUARDRAIL
<u>248.89</u>		614 + 28 - 616 + 84	PINES ROAD RESURF. WITH GUARDRAIL
1664.67	TOTAL		

**X7030005 TEMPORARY PAVEMENT MARKING REMOVAL**

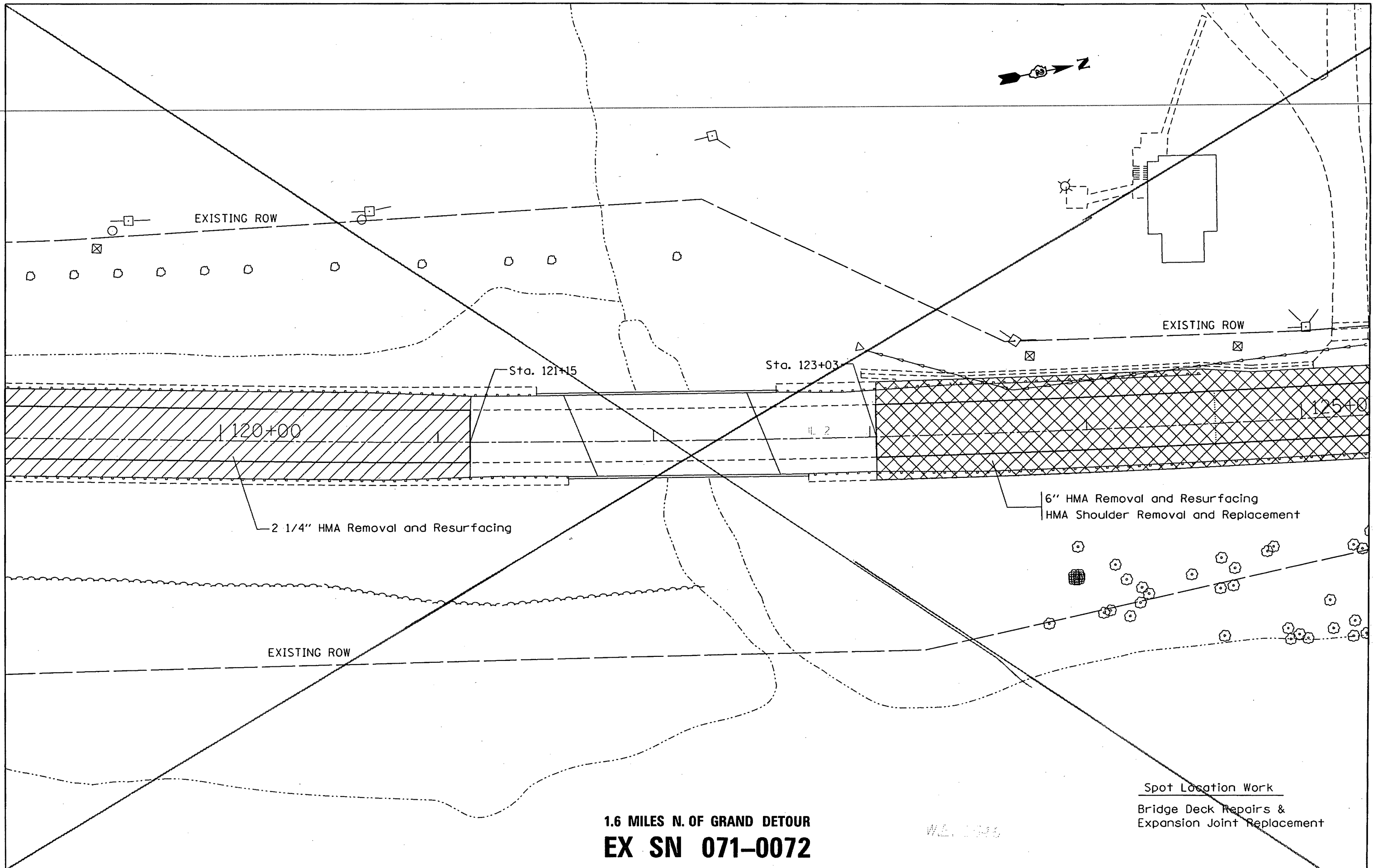
SO FT	LOCATION	STATION	REMARKS
<del>317</del>		<del>119 + 71 - 124 + 47</del>	<del>HIGHWAY STANDARD 701321 REMOVAL (2 TIMES)</del>
<del>80</del>	LT/RT	<del>119 + 95 - 121 + 15</del>	<del>FINAL TAPER TO BRIDGE DECK OVERLAY</del>
<del>80</del>	LT/RT	<del>123 + 03 - 124 + 23</del>	<del>FINAL TAPER FROM BRIDGE DECK OVERLAY</del>
261		253 + 94 - 257 + 85	HIGHWAY STANDARD 701321 REMOVAL (2 TIMES)
80	LT/RT	254 + 18 - 255 + 38	FINAL TAPER TO BRIDGE DECK OVERLAY
80	LT/RT	256 + 41 - 257 + 61	FINAL TAPER FROM BRIDGE DECK OVERLAY
311		455 + 08 - 459 + 75	HIGHWAY STANDARD 701321 REMOVAL (2 TIMES)
80	LT/RT	455 + 32 - 456 + 52	FINAL TAPER TO BRIDGE DECK OVERLAY
80	LT/RT	458 + 31 - 459 + 51	FINAL TAPER FROM BRIDGE DECK OVERLAY
309		460 + 30 - 464 + 94	HIGHWAY STANDARD 701321 REMOVAL (2 TIMES)
80	LT/RT	460 + 54 - 461 + 74	FINAL TAPER TO BRIDGE DECK OVERLAY
80	LT/RT	463 + 50 - 464 + 70	FINAL TAPER FROM BRIDGE DECK OVERLAY
306		477 + 14 - 481 + 73	HIGHWAY STANDARD 701321 REMOVAL (2 TIMES)
80	LT/RT	477 + 38 - 478 + 58	FINAL TAPER TO BRIDGE DECK OVERLAY
<del>80</del>	LT/RT	<del>480 + 29 - 481 + 49</del>	<del>FINAL TAPER FROM BRIDGE DECK OVERLAY</del>
<u>1987</u>	TOTAL		

1510

MODEL: Default  
FILE NAME: p:\w\0848EB\INTEG\_illinois.gov\F\DOT\Documents\DOT\_Offices\DOT\Projects\0204714\CAD\Drawn\CAD\Sheets\02-shs-schedule.dgn

<small>USER NAME = batesrl</small>	<small>DESIGNED -</small>	<small>REVISED -</small>	<b>STATE OF ILLINOIS DEPARTMENT OF TRANSPORTATION</b>	<b>SCHEDULE OF QUANTITIES</b>				<small>F.A.P. RTE.</small>	<small>SECTION</small>	<small>COUNTY</small>	<small>TOTAL SHEETS</small>	<small>SHEET NO.</small>
<small>PLOT SCALE = 200.0000' / in.</small>	<small>CHECKED -</small>	<small>REVISED -</small>		<small>SCALE:</small>	<small>SHEET</small>	<small>OF</small>	<small>SHEETS</small>	<small>STA.</small>	<small>TO STA.</small>	<small>ILLINOIS</small>	<small>FED. AID PROJECT</small>	
<small>PLOT DATE = Oct-11-2017 09:01:46 AM</small>	<small>DATE -</small>	<small>REVISED -</small>										

A 1-4-18



**1.6 MILES N. OF GRAND DETOUR  
EX SN 071-0072**

*W.E. 1986*

Spot Location Work  
Bridge Deck Repairs &  
Expansion Joint Replacement

FILE NAME *	USER NAME * bates-l	DESIGNED -	REVISED -	<b>STATE OF ILLINOIS DEPARTMENT OF TRANSPORTATION</b>	<b>PLAN SHEET EX SN 071-0072</b>	F.A.P. RTE.	SECTION	COUNTY	TOTAL SHEETS	SHEET NO.	
put\\NL084EBIDINTEG\Illinois.gov\FWIDOT\Documents\1001 Offices\District 2\Projects\020-DRMSData\GAD\shants\0204714-shr-pln.dwg		CHECKED -	REVISED -			742	(38,39) RS-6	OGLE	135	56	
PLOT SCALE * 40.0000 "/td> <td></td> <td>DATE -</td> <td>REVISED -</td> <td colspan="6">CONTRACT NO. 64K27</td>		DATE -	REVISED -			CONTRACT NO. 64K27					
PLOT DATE * Oct-11-2017 09:18:59 AM						ILLINOIS FED. AID PROJECT					
Default				SCALE: SHEET OF SHEETS STA. TO STA.		<b>SHEET REMOVED 1-4-18</b>					

**GENERAL NOTES**

All structural steel shall conform to AASHTO Classification M-270 Gr. 36, unless otherwise noted.

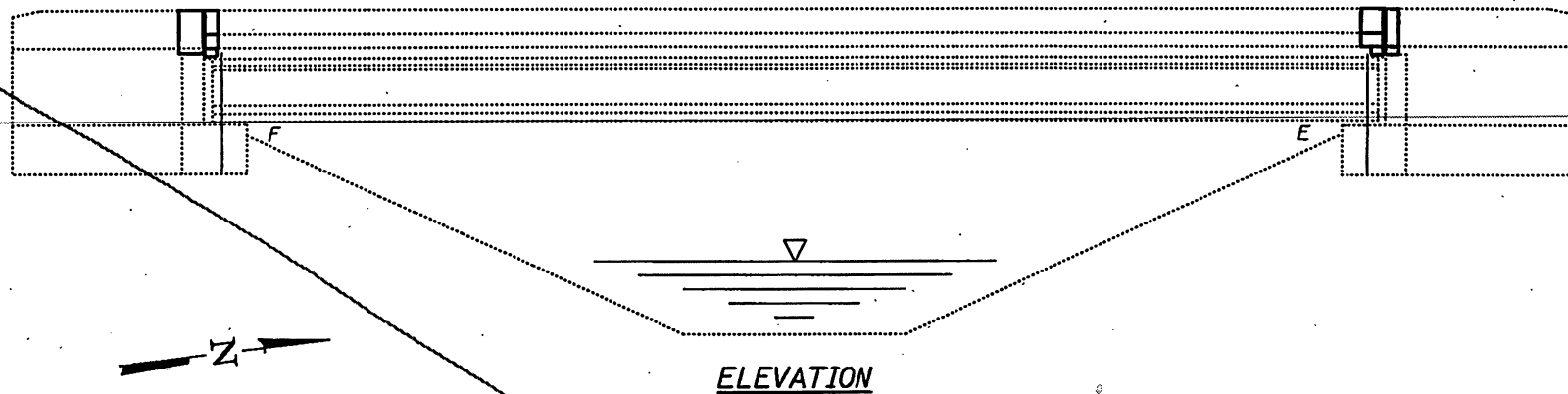
Plan dimensions and details relative to existing plans are subject to nominal construction variations. The Contractor shall field verify existing dimensions and details affecting new construction and make necessary approved adjustments prior to construction or ordering of materials. Such variations shall not be cause for additional compensation for a change in scope of the work, however, the Contractor will be paid for the quantity actually furnished at the unit price bid for the work.

Reinforcement bars designated (E) shall be epoxy coated.

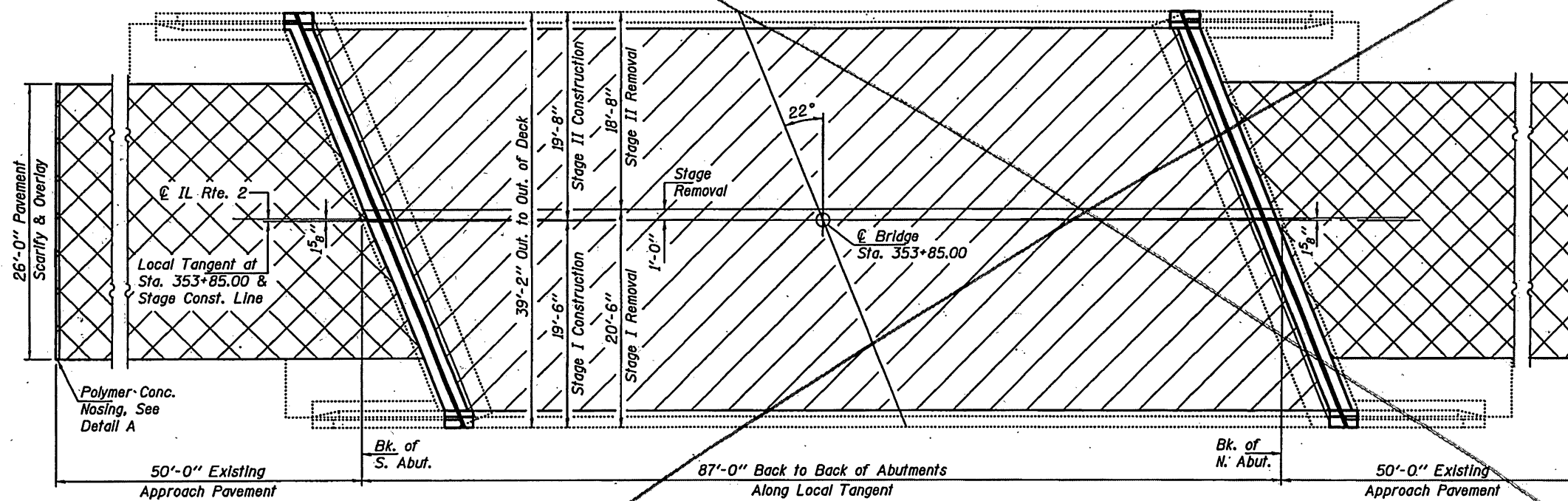
Existing reinforcement bars extending into the removal area shall be cleaned, straightened and incorporated into the new construction. Any reinforcement bars that are damaged during concrete removal shall be replaced with an approved bar splicer or anchorage system. Cost included with Concrete Removal.

Joint openings shall be adjusted according to Article 520.04 of the Std. Specs. when the deck is poured at an ambient temperature other than 50° F.

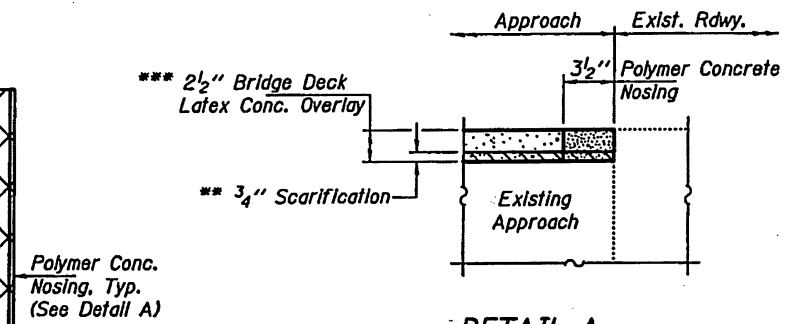
Synthetic fibers shall be added to the bridge deck latex concrete overlay. See Special Provisions.



**ELEVATION**



**PLAN**

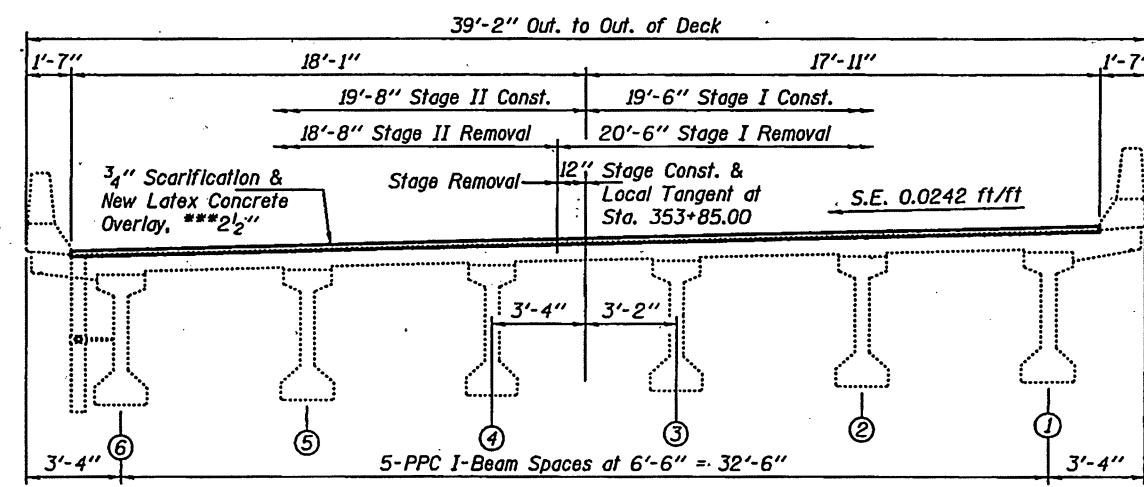


**DETAIL A**

\*\* Cast of 3/4" Scarification Included with Bridge Deck Scarification, 3/4"

\*\*\* Prior to 1/4" Diamond Grinding

- Hatched areas indicate Bridge Deck Scarification, Bridge Deck Latex Concrete Overlay, Diamond Grinding, & Bridge Deck Grooving limits (driving lanes only).
- Cross Hatched areas indicate Scarification, Bridge Deck Latex Concrete Overlay, & Diamond Grinding limits.

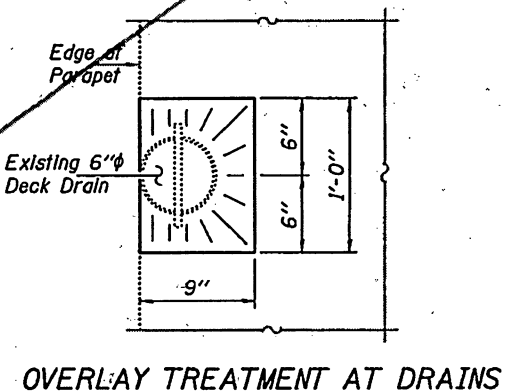
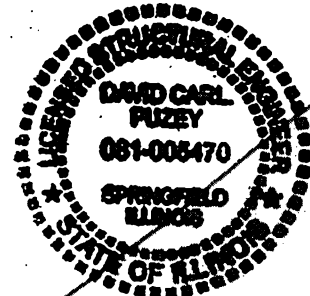


**CROSS SECTION SHOWING STAGING**  
(Looking North)

**TOTAL BILL OF MATERIAL**

ITEM	UNIT	QUANTITY
Concrete Removal	Cu. Yd.	3.8
Concrete Superstructure	Cu. Yd.	4.2
Reinforcement Bars, Epoxy-Coated	Pound	780
Bar Splicers	Each	12
Preformed Joint Strip Seal	Foot	82
Bridge Deck Scarification, 3/4"	Sq. Yd.	615.7
Bridge Deck Latex Concrete Overlay, 2 1/2"	Sq. Yd.	615.7
Polymer Concrete	Cu. Ft.	1.9
Bridge Deck Grooving (Longitudinal)	Sq. Yd.	222.2
Diamond Grinding	Sq. Yd.	628.7
Protective Coat	Sq. Yd.	133.3

\* New Concrete Superstructure areas only.



**OVERLAY TREATMENT AT DRAINS**

Expires November 30, 2018

DESIGNED - <i>[Signature]</i>	EXAMINED - <i>[Signature]</i>	DATE - DECEMBER 5, 2017	<b>STATE OF ILLINOIS DEPARTMENT OF TRANSPORTATION</b>	<b>GENERAL PLAN &amp; ELEVATION ILLINOIS ROUTE 2 OVER DRAINAGE DITCH SN 071-0072</b>	F.A. RTE. 742	SECTION (38,39)RS-C	COUNTY OGLE	TOTAL SHEETS 135	SHEET NO. 75	
CHECKED - <i>[Signature]</i>	PASSED - <i>[Signature]</i>	REVISED			CONTRACT NO. 64K27					
DRAWN - <i>[Signature]</i>	ENGINEER OF BRIDGES AND STRUCTURES	REVISED			SHEET NO. 1 OF 4 SHEETS					
CHECKED - <i>[Signature]</i>	ENGINEER OF BRIDGES AND STRUCTURES	REVISED			ILLINOIS FED. AID PROJECT					

**SHEET REMOVED 1-4-14**



Remove portion of wingwall as required at corners to allow clearance for new deck overhang. Cut reinforcement flush and seal surface with epoxy. Cost included with Concrete Removal.

**SECTION THRU PARAPET (APPROACH)**

**SECTION C-C**  
Dlms. at Rt. L

**SECTION D-D**  
Dlms. at Rt. L

Notes:  
The Contractor shall use extreme care during concrete removal so as not to damage the PPC I-Beam.

- \* Prior to 1/4" Diamond Grinding
- \*\* Cost of 3/4" Scarification Included with Bridge Deck Scarification, 3/4".

**BARS d(E) & d2(E)**

**BAR d1(E)**

**SECTION THRU PARAPET (DECK)**

**BILL OF MATERIAL**

Bar	No.	Size	Length	Shape
a(E)	8	#5	20'-6"	—
a1(E)	8	#6	4'-6"	—
d(E)	4	#4	5'-4"	L
d1(E)	8	#5	3'-11"	L
d2(E)	4	#4	5'-4"	L
h(E)	16	#6	20'-9"	—
Concrete Removal		Cu. Yd.	3.8	
Concrete Superstructure		Cu. Yd.	4.2	
Bar Splacers		Each	12	
Reinforcement Bars, Epoxy Coated		Pound	780	

**CONCRETE REMOVAL PLAN**

(South Abutment shown; North Abutment similar except as noted.)

**CONCRETE REPLACEMENT PLAN**

(South Abutment shown; North Abutment similar except as noted.)

Note:  
Hatched areas indicate Concrete Removal.

DESIGNED - JGY  
CHECKED - CCC  
DRAWN - Kyle M. Steffen  
CHECKED - JGY CCC

EXAMINED - *Timothy A. [Signature]*  
ENGINEER OF STRUCTURAL SERVICES  
PASSED - *Carl [Signature]*  
ENGINEER OF BRIDGES AND STRUCTURES

DATE - DECEMBER 5, 2017  
REVISED  
REVISED

STATE OF ILLINOIS  
DEPARTMENT OF TRANSPORTATION

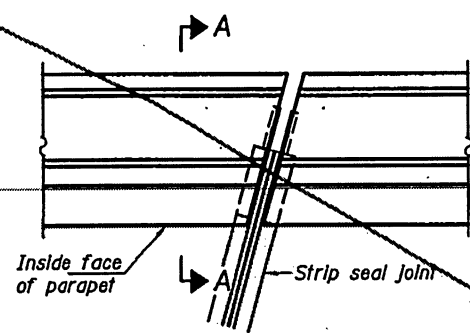
JOINT REMOVAL & REPLACEMENT DETAILS  
SN 071-0072

SHEET NO. 2 OF 4 SHEETS

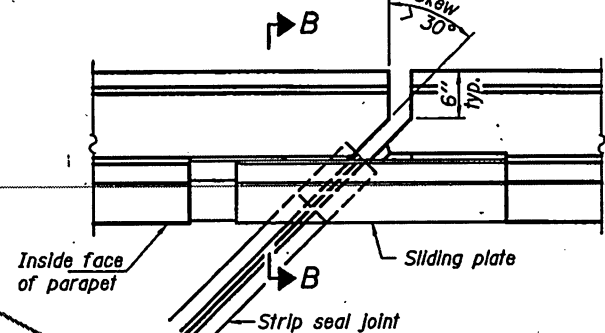
F.A. RTE.	SECTION	COUNTY	TOTAL SHEETS	SHEET NO.
742	(38,39)RS-C	OGLE	135	76

CONTRACT NO. 64K27  
ILLINOIS FED. AID PROJECT

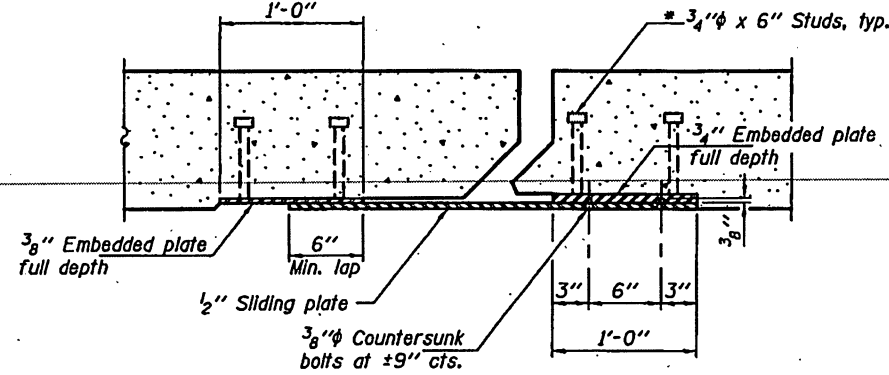
A CHECK REQUIRED 11-11-18



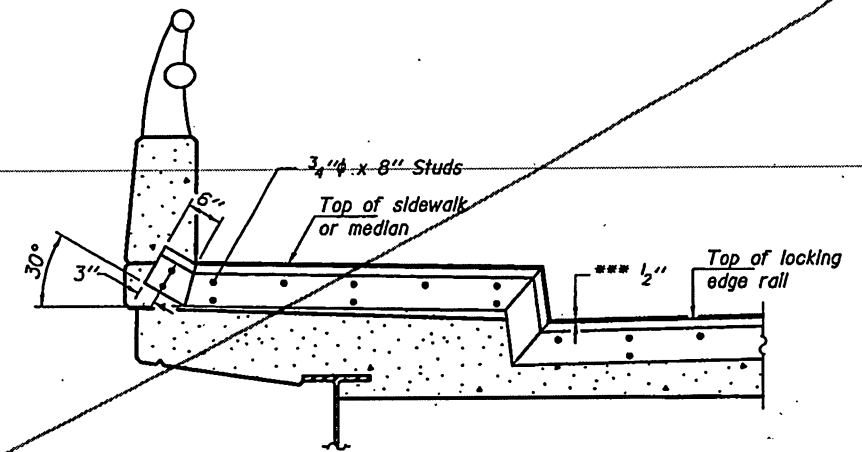
**PLAN**  
(For skews  $\leq 30^\circ$ )



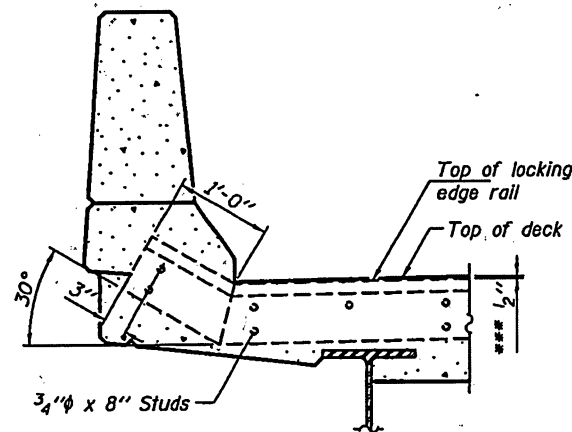
**PLAN**  
(For skews  $> 30^\circ$ )  
Showing point block



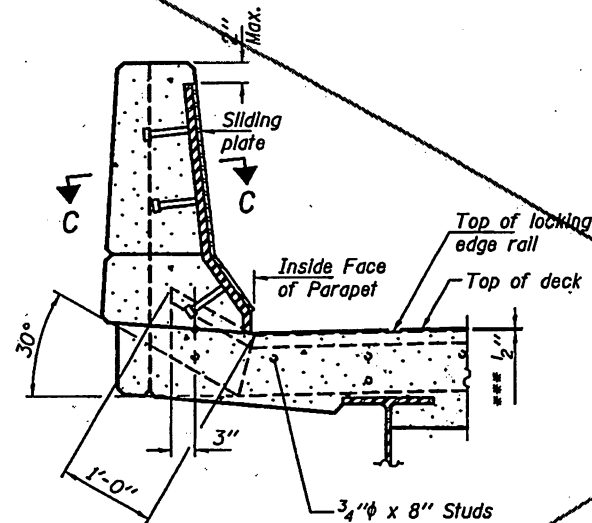
**SECTION C-C**



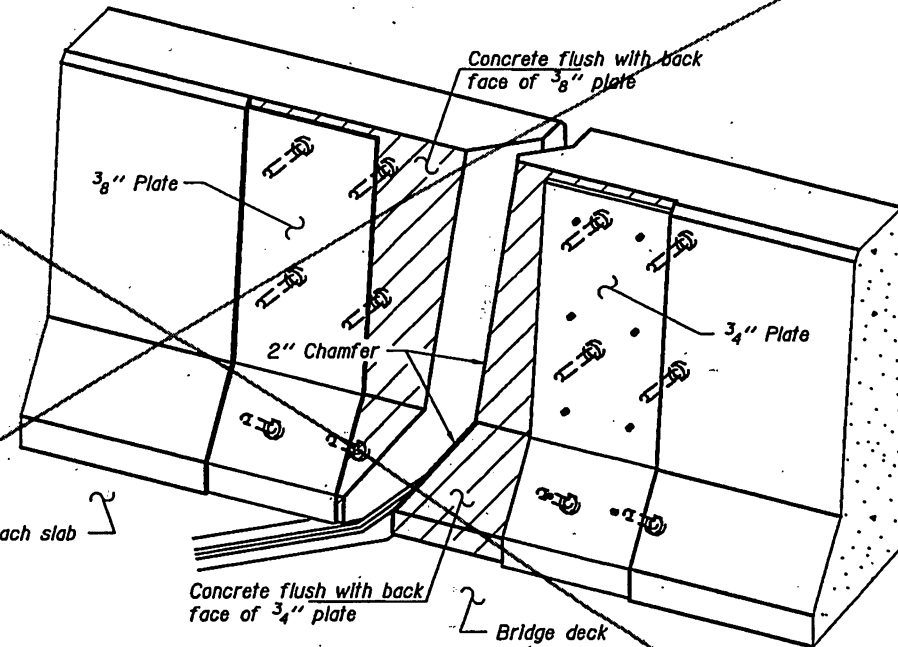
**TYPICAL END TREATMENT AT SIDEWALK OR MEDIAN**  
Shorter plates with a single row of studs at 12" cts. may be necessary on medians which are shallower than 9". See manufacturer's recommendation.



**SECTION A-A**



**SECTION B-B**



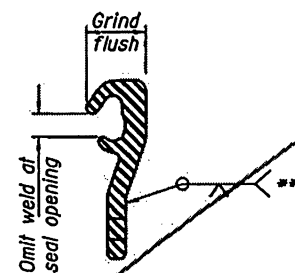
**TRIMETRIC VIEW**  
(Showing back plates only)

\* Granular or solid flux filled headed studs conforming to Article 1006.32 of the Std. Specs., automatically end welded.

**Notes:**  
The strip seal shall be made continuous and shall have a minimum thickness of 1/4". The configuration of the strip seal shall match the configuration of the Locking Edge Rails.  
The height and thickness of the Locking Edge Rails shown are minimum dimensions. The actual configuration of the Locking Edge Rails and matching strip seal may vary from manufacturer to manufacturer. Flanged edge rails will not be allowed.  
The inside of the Locking Edge Rail groove shall be free of weld residue. Locking Edge Rails may be spliced at slope discontinuities and stage construction joints.  
All steel components shall be galvanized after fabrication according to Article 520.03 of the Standard Specifications.  
Maximum space between rail segments at stage lines shall be 3/16", sealed with a suitable sealant.  
Parapet plates and anchorage studs for skews > 30° included in the cost of Preformed Joint Strip Seal.  
The manufacturer's recommended installation methods shall be followed.



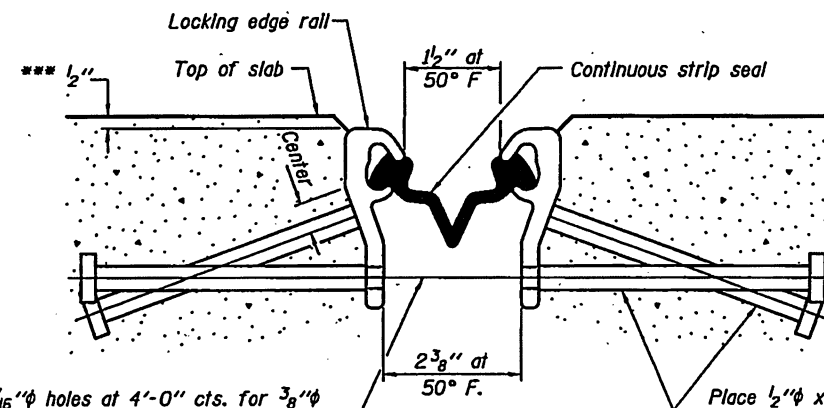
**LOCKING EDGE RAIL**



**LOCKING EDGE RAIL SPLICE**

\*\* Back gouge not required if complete joint penetration is verified by mock-up.

\*\*\* Prior to 1/4" Diamond Grinding.



**SECTION THRU STRIP SEAL JOINT**

7/16"  $\phi$  holes at 4'-0" cts. for 3/8"  $\phi$  bolts. All bolts shall be burned, sawed, or chipped off flush with the plates after forms are removed, typ.

Place 1/2"  $\phi$  x 6" granular or solid flux filled headed studs conforming to Article 1006.32 of the Std. Specs., automatically end welded at 1'-0" alt. cts.

**BILL OF MATERIAL**

Item	Unit	Total
Preformed Joint Strip Seal	Foot	82

DESIGNED - JGY  
CHECKED - CCC  
DRAWN - Kyle M. Steffen  
CHECKED - JGY CCC

EXAMINED *Timothy A. ...*  
ENGINEER OF STRUCTURAL SERVICES  
PASSED *Carl ...*  
ENGINEER OF BRIDGES AND STRUCTURES

DATE - DECEMBER 5, 2017  
REVISED  
REVISED

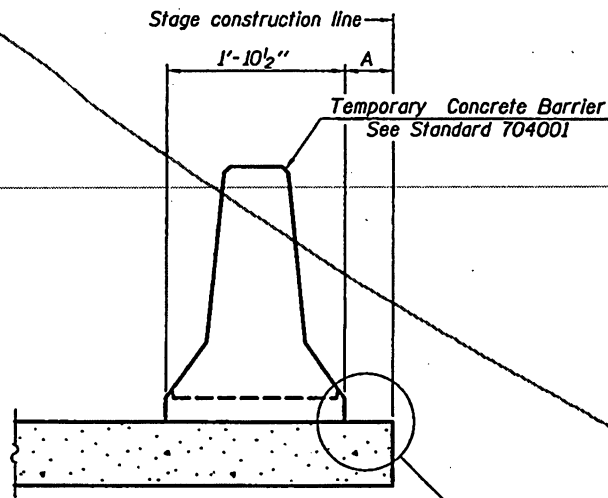
STATE OF ILLINOIS  
DEPARTMENT OF TRANSPORTATION

PREFORMED JOINT STRIP SEAL DETAILS  
SN 071-0072

SHEET NO. 3 OF 4 SHEETS

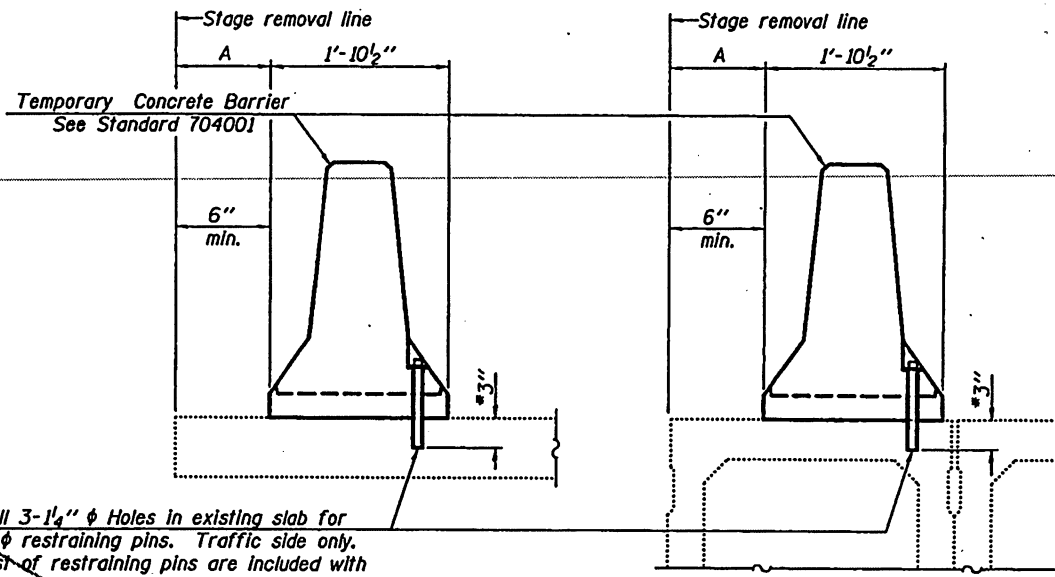
F.A. RTE.	SECTION	COUNTY	TOTAL SHEETS	SHEET NO.
742	(38,39)RS-C	OGLE	135	77

CONTRACT NO. 64K27



When "A" is 3'-1" or less, the temporary concrete barrier shall be restrained to the new slab according to Detail I, II or III. No restraint is required when "A" is greater than 3'-1".

NEW SLAB OR NEW DECK BEAM



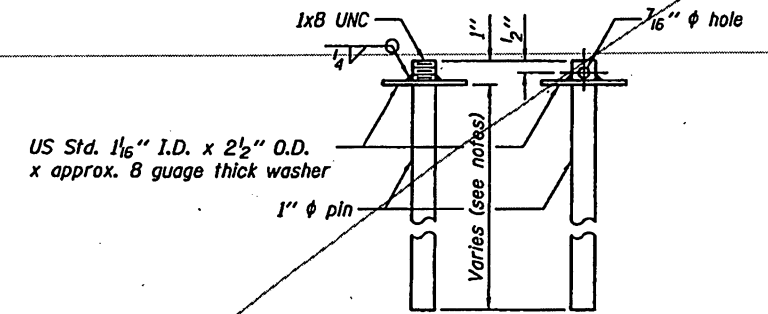
Drill 3-1/4"  $\phi$  Holes in existing slab for 1"  $\phi$  restraining pins. Traffic side only. Cost of restraining pins are included with Temporary Concrete Barrier. No restraint is required when "A" is greater than 3'-1".

When hot-mix asphalt wearing surface is present, embedment shall be 3" plus the wearing surface depth.

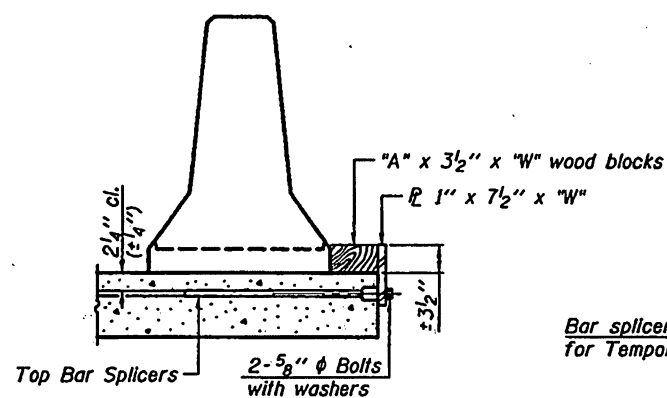
EXISTING SLAB

EXISTING DECK BEAM

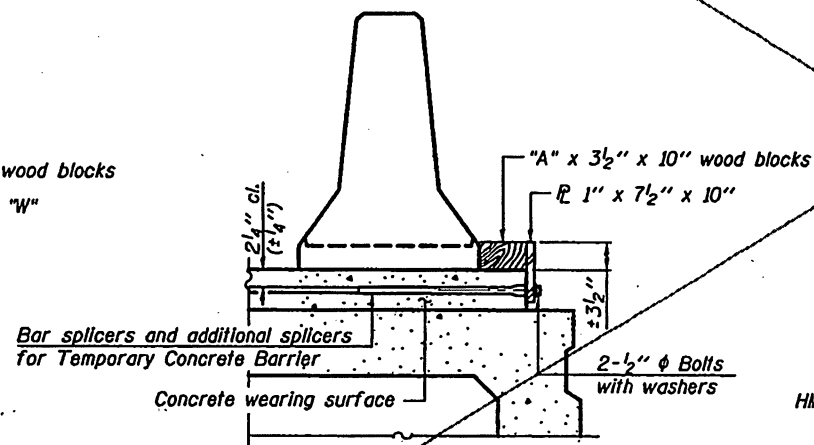
SECTIONS THRU SLAB OR DECK BEAM



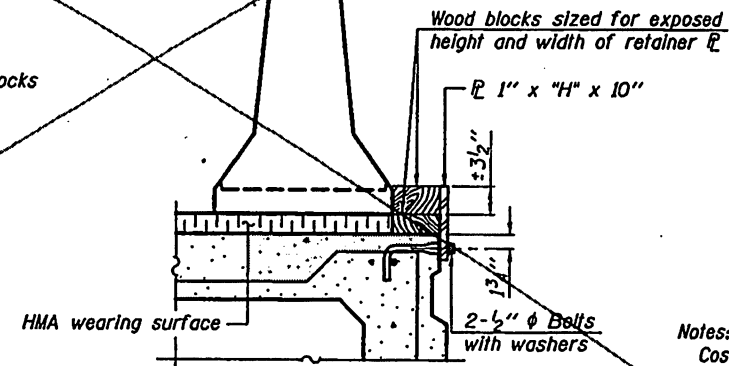
RESTRAINING PIN



DETAIL I



DETAIL II



DETAIL III

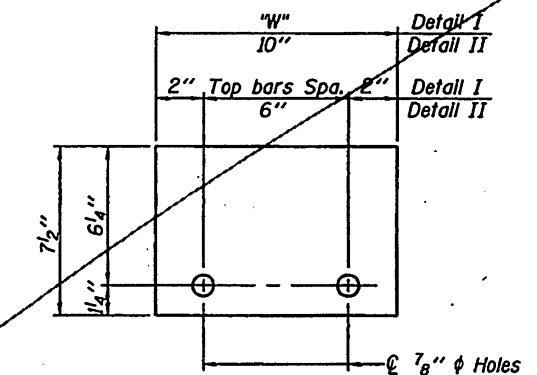
BAR SPLICER FOR #4 BAR - DETAIL III

Notes:  
 Cost of retainer assembly is included with Temporary Concrete Barrier.  
 A retainer assembly shall be located at the approximate  $\phi$  of each temporary concrete barrier.  
 The retainer plate shall not be removed until the concrete on the adjacent stage is ready to be poured. For Detail III applications the retainer plate shall not be removed until just prior to placing the adjacent beam.  
 When the "A" dimension is less than 1 1/2", the wood block shall be omitted and the barrier shall be placed in direct contact with the steel retainer plate. For deck beam applications the minimum required "A" distance is 6" to accommodate the shear key clamping device.

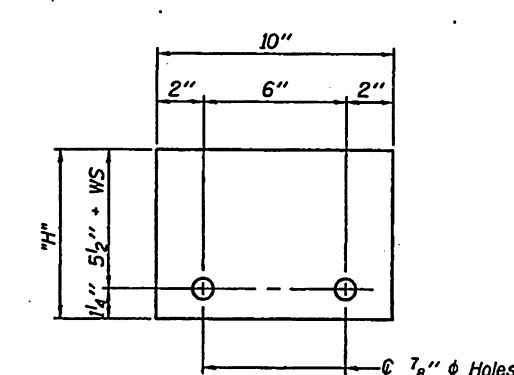
Detail I - Installation for a new bridge deck or bridge slab.

Detail II - Installation for a new deck beam with an initial concrete wearing surface. Additional bar splicers shall be provided at 6'-0" centers and paired with the bar splicers of the concrete wearing surface reinforcement to accommodate the installation of the retainer assemblies. The cost of the additional bar splicers is included with the concrete wearing surface.

Detail III - Installation for a new deck beam with no initial wearing surface or with an initial hot-mix asphalt (HMA) wearing surface present. The deck beam directly beneath the temporary concrete barrier shall be fabricated with bar splicer inserts in the side of the beam, as detailed, to accommodate the installation of the retainer assemblies. A pair of bar splicers, 6" apart, shall be placed at 6'-0" centers along the length of the beam. The cost of the bar splicers is included with the deck beam.



STEEL RETAINER 1" x 7 1/2" x "W"  
(Detail I and II)



STEEL RETAINER 1" x "H" x 10"  
(Detail III)

R-27

11-22-2016

DESIGNED - JCY  
 CHECKED - CCC  
 DRAWN - Kyle M. Steffen  
 CHECKED - JCY CCC

EXAMINED  
 PASSED  
 ENGINEER OF STRUCTURAL SERVICES  
 ENGINEER OF BRIDGES AND STRUCTURES

DATE - DECEMBER 5, 2017  
 REVISED  
 REVISED

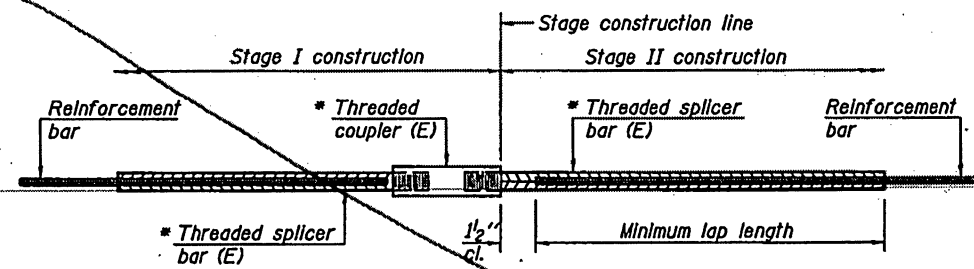
STATE OF ILLINOIS  
 DEPARTMENT OF TRANSPORTATION

TEMPORARY CONCRETE BARRIER FOR STAGE CONSTRUCTION  
 SN 071-0072

SHEET NO. 4A OF 4 SHEETS

F.A. RTE.	SECTION	COUNTY	TOTAL SHEETS	SHEET NO.
742	(38,39)RS-C	OGLE	135	78A
CONTRACT NO. 64K27			ILLINOIS FED. AID PROJECT	

11-22-2016

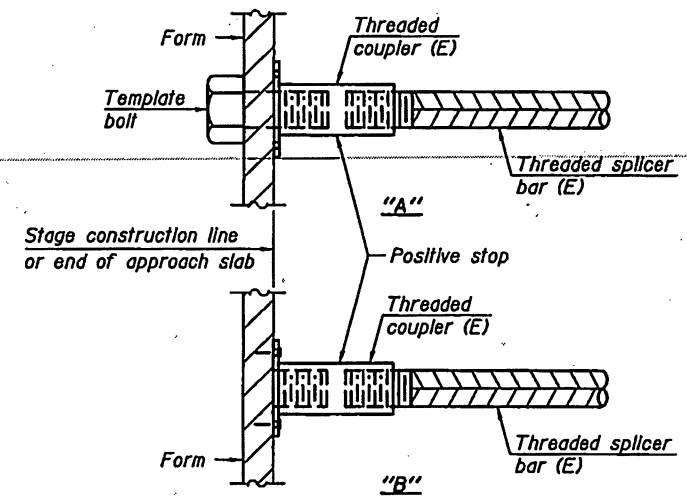


**STANDARD BAR SPLICER ASSEMBLY**

Threaded splicer bar length = min. lap length + 1/2" + thread length

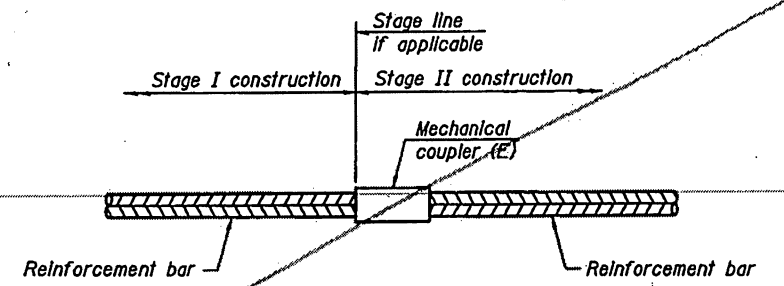
\* Epoxy not required on Bar Splicer Assembly components used in conjunction with black bars.

Location	Bar size	No. assemblies required	Minimum lap length
Bridge Deck	#5	4	3'-6"
Abutment	#6	8	4'-0"



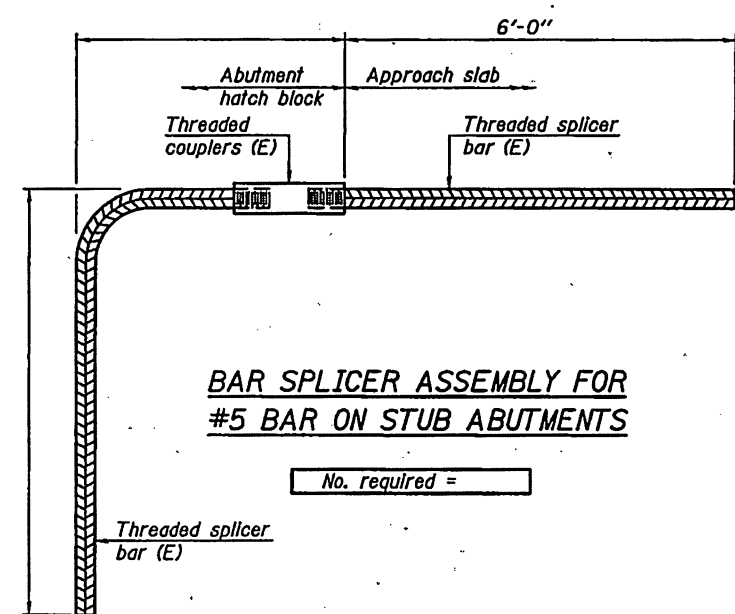
**INSTALLATION AND SETTING METHODS**

"A": Set bar splicer assembly by means of a template bolt.  
 "B": Set bar splicer assembly by nailing to wood forms or cementing to steel forms.  
 (E): Indicates epoxy coating.



**STANDARD MECHANICAL SPLICER**

Location	Bar size	No. assemblies required



**BAR SPLICER ASSEMBLY FOR #5 BAR ON STUB ABUTMENTS**

No. required =

**NOTES**

Splicer bars shall be deformed with threaded ends and have a minimum 60 ksi yield strength.  
 All reinforcement shall be lapped and tied to the splicer bars.  
 Bar splicer assemblies shall be epoxy coated according to the requirements for reinforcement bars. See Section 508 of the Standard Specifications.  
 See approved list of bar splicer assemblies and mechanical splicers for alternatives.

BSD-1

6-8-15

DESIGNED - JGY	EXAMINED - <i>Timothy A. Ancelet</i>	DATE - DECEMBER 5, 2017
CHECKED - CCC	ENGINEER OF STRUCTURAL SERVICES	
DRAWN - Kyle M. Steffen	PASSED - <i>Carl Perry</i>	REVISOR
CHECKED - JGY CCC	ENGINEER OF BRIDGES AND STRUCTURES	REVISOR

STATE OF ILLINOIS  
DEPARTMENT OF TRANSPORTATION

BAR SPLICER ASSEMBLY AND MECHANICAL SPLICER DETAILS  
SN 071-0072

F.A. RTE.	SECTION	COUNTY	TOTAL SHEETS	SHEET NO.
742	(38,39)RS-C	OGLE	135	78
CONTRACT NO. 64K27			ILLINOIS FED. AID PROJECT	

SHEET NO. 4 OF 4 SHEETS

SHEET REMOVED 14-18