

STATE OF ILLINOIS
DEPARTMENT OF TRANSPORTATION

F.A.P. RTE.	SECTION	COUNTY	TOTAL SHEETS	SHEET NO.
805	82-9TS-1	ST. CLAIR	3	1
		ILLINOIS	CONTRACT NO. 76K93	

PROPOSED HIGHWAY PLANS

F.A.P. ROUTE 805 (IL 161)
SECTION 82-9TS-1
PROJECT STP-UUA9(645)
TRAFFIC SIGNALS AT IL 161 & I-64 RAMP C
ST. CLAIR COUNTY

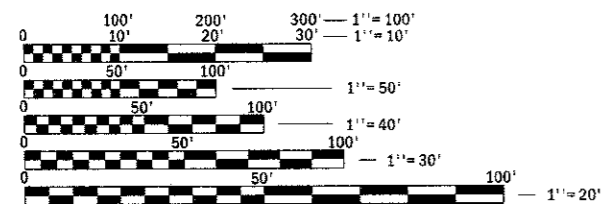
C-98-136-18

INDEX OF SHEETS

1. COVER SHEET
2. & 3. SUMMARY OF QUANTITIES
4. ELECTRICAL GENERAL NOTES,
TRAFFIC SIGNAL LEGEND & DETAILS
5. & 6. TRAFFIC SIGNAL PLANS
7. CABLE DIAGRAM
8. SOIL BORINGS

STANDARDS

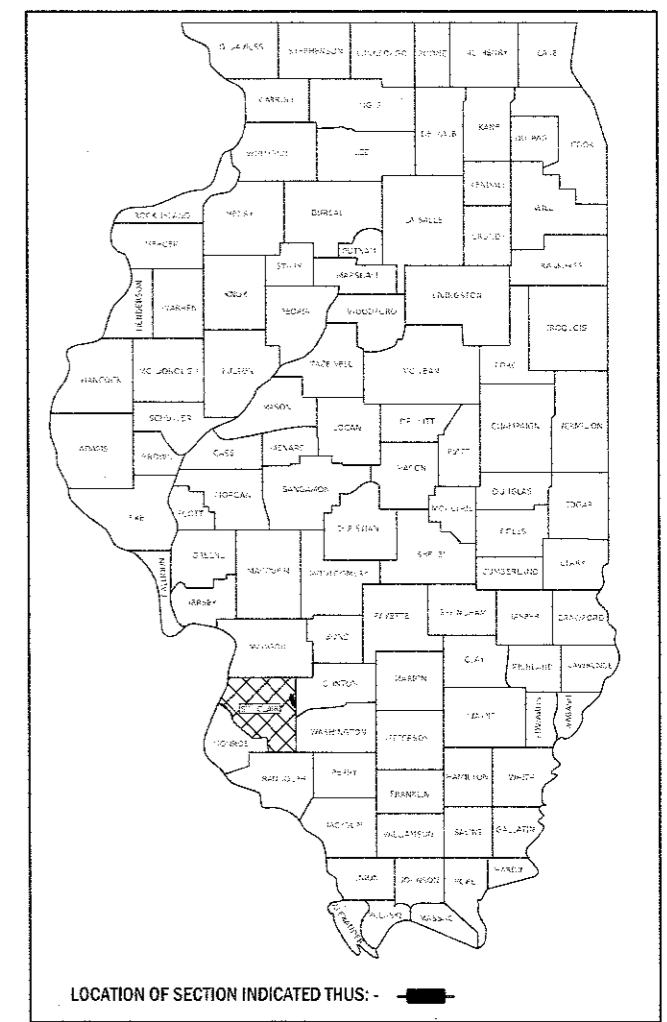
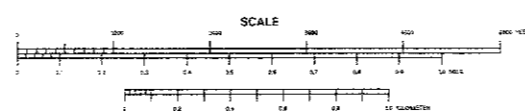
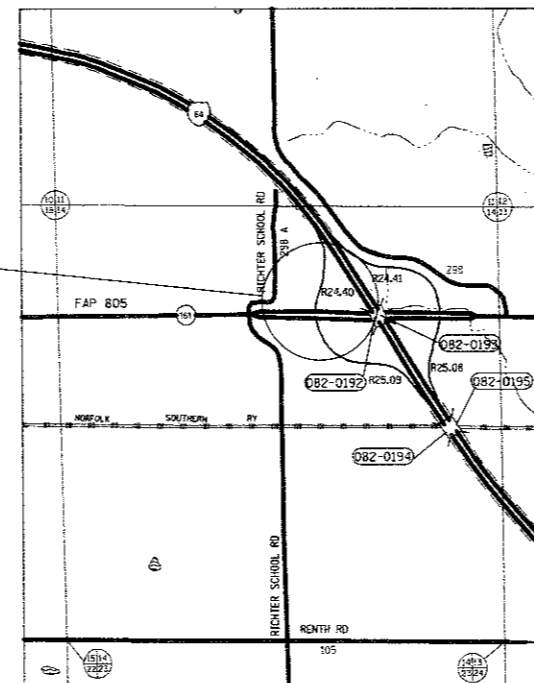
000001-06	701101-05	701106-02
701411-09	701421-08	701456-05
701901-07	805001-01	814001-03
814006-02	857001-01	877001-07
877006-06	878001-10	880006-01
886001-01	886006-01	



FULL SIZE PLANS HAVE BEEN PREPARED USING STANDARD ENGINEERING SCALES. REDUCED SIZED PLANS WILL NOT CONFORM TO STANDARD SCALES. IN MAKING MEASUREMENTS ON REDUCED PLANS, THE ABOVE SCALES MAY BE USED.

J.U.L.I.E.
JOINT UTILITY LOCATION INFORMATION FOR EXCAVATION
1-800-892-0123
OR 811

MASCOUTAH TOWNSHIP
IL 161 STA. 37+00 TO STA. 48+00
I-64 RAMP C STA. 313+00 TO STA. 317+39



STATE OF ILLINOIS
DEPARTMENT OF TRANSPORTATION

SUBMITTED *Aug 24 2017*

Jeffrey Z. Kam...
REGIONAL ENGINEER

Oct 13 2017
Maureen M. Addis, PE
ENGINEER OF DESIGN AND ENVIRONMENT

Maureen M. Addis
DIRECTOR OF PROGRAM DEVELOPMENT

PROJECT ENGINEER HERVE' GELIN (618) 346-3179
SQUAD LEADER MICHAEL PRESTON (618) 346-3143

CONTRACT NO. 76K93

PRINTED BY THE AUTHORITY
OF THE STATE OF ILLINOIS

CODE NO.	ITEM	UNIT	TOTAL QUANTITIES	CONSTRUCTION CODE TRAFFIC 0021
60618300	CONCRETE MEDIAN SURFACE, 4 INCH	SQ FT	289	289
* 66900200	NON-SPECIAL WASTE DISPOSAL	CU YD	220	220
* 66900450	SPECIAL WASTE PLANS AND REPORTS	L SUM	1	1
* 66900530	SOIL DISPOSAL ANALYSIS	EACH	4	4
67000400	ENGINEER'S FIELD OFFICE, TYPE A	CAL MO	8	8
67100100	MOBILIZATION	L SUM	1	1
70100450	TRAFFIC CONTROL AND PROTECTION, STANDARD 701201	L SUM	1	1
70100825	TRAFFIC CONTROL AND PROTECTION, STANDARD 701456	L SUM	1	1
70102635	TRAFFIC CONTROL AND PROTECTION, STANDARD 701701	L SUM	1	1
* 78000200	THERMOPLASTIC PAVEMENT MARKING - LINE 4"	FOOT	20	20
* 78000500	THERMOPLASTIC PAVEMENT MARKING - LINE 8"	FOOT	28	28
* 78000600	THERMOPLASTIC PAVEMENT MARKING - LINE 12"	FOOT	8	8
* 78000650	THERMOPLASTIC PAVEMENT MARKING - LINE 24"	FOOT	60	60
80500100	SERVICE INSTALLATION, TYPE A	EACH	1	1
81028320	UNDERGROUND CONDUIT, PVC, 1" DIA.	FOOT	85	85
81028340	UNDERGROUND CONDUIT, PVC, 1 1/2" DIA.	FOOT	1269	1269
81028350	UNDERGROUND CONDUIT, PVC, 2" DIA.	FOOT	119	119
81028360	UNDERGROUND CONDUIT, PVC, 2 1/2" DIA.	FOOT	63	63

CODE NO.	ITEM	UNIT	TOTAL QUANTITIES	CONSTRUCTION CODE TRAFFIC 0021
81028370	UNDERGROUND CONDUIT, PVC, 3" DIA.	FOOT	175	175
81028390	UNDERGROUND CONDUIT, PVC, 4" DIA.	FOOT	57	57
81400700	HANDHOLE, PORTLAND CEMENT CONCRETE	EACH	8	8
81400720	DOUBLE HANDHOLE, PORTLAND CEMENT CONCRETE	EACH	1	1
85700200	FULL-ACTUATED CONTROLLER AND TYPE IV CABINET	EACH	1	1
87301245	ELECTRIC CABLE IN CONDUIT, SIGNAL NO. 14 5C	FOOT	3562	3562
87301255	ELECTRIC CABLE IN CONDUIT, SIGNAL NO. 14 7C	FOOT	447	447
87301305	ELECTRIC CABLE IN CONDUIT, LEAD-IN, NO. 14 1 PAIR	FOOT	3951	3951
87502680	TRAFFIC SIGNAL POST, ALUMINUM 14 FT.	EACH	2	2
87700120	STEEL MAST ARM ASSEMBLY AND POLE, 16 FT.	EACH	1	1
87700220	STEEL MAST ARM ASSEMBLY AND POLE, 36 FT.	EACH	1	1
87702200	STEEL MAST ARM ASSEMBLY AND POLE WITH DUAL MAST ARMS, 20 FT.	EACH	1	1
87800100	CONCRETE FOUNDATION, TYPE A	FOOT	6	6
87800200	CONCRETE FOUNDATION, TYPE D	FOOT	3	3
87800400	CONCRETE FOUNDATION, TYPE E 30-INCH DIAMETER	FOOT	33.5	33.5
88040070	SIGNAL HEAD, POLYCARBONATE, LED, 1-FACE, 3-SECTION, BRACKET MOUNTED	EACH	2	2
88040090	SIGNAL HEAD, POLYCARBONATE, LED, 1-FACE, 3-SECTION, MAST ARM MOUNTED	EACH	7	7
88040120	SIGNAL HEAD, POLYCARBONATE, LED, 1-FACE, 4-SECTION, MAST ARM MOUNTED	EACH	2	2

* SPECIALTY ITEM

MODEL: C:\Users\jgall\OneDrive\Documents\DOT_01648\District_8\Projects\087\88040120\CAD\sheeta\0876K93-sh1-ta.dgn
 FILE NAME: \\IL084EBID\INTEG\Illinois.gov\PIWIDOT\Documents\DOT_01648\District_8\Projects\087\88040120\CAD\sheeta\0876K93-sh1-ta.dgn
 PLOT SCALE = 39.9955' / in.
 PLOT DATE = 8/23/2017

FILE NAME =	USER NAME = prestonm	DESIGNED -	REVISED -
PROJECT NO. = 0876K93	PROJECT NAME = 0876K93	CHECKED -	REVISED -
PLOT SCALE = 39.9955' / in.	PLOT DATE = 8/23/2017	DATE -	REVISED -

STATE OF ILLINOIS
DEPARTMENT OF TRANSPORTATION

SUMMARY OF QUANTITIES

F.A.P. RTE. 805	SECTION 82-975-1	COUNTY ST. CLAIR	TOTAL SHEETS 8	SHEET NO. 2
SCALE: SHEET OF SHEETS STA. TO STA.			CONTRACT NO. 76K93	
ILLINOIS FED. AID PROJECT				

REV

			RURAL	80% FEDERAL 20% STATE
			TOTAL	0021
88040230	SIGNAL HEAD, POLYCARBONATE, LED, 2-FACE, 3-SECTION, BRACKET MOUNTED	EACH	1	1
88200510	TRAFFIC SIGNAL BACKPLATE, RETROREFLECTIVE	EACH	9	9
88500100	INDUCTIVE LOOP DETECTOR	EACH	9	9
88600100	DETECTOR LOOP, TYPE I	FOOT	1032	1032
87301815	ELECTRIC CABLE IN CONDUIT, SERVICE, NO. 6 3 C	<i>FOOT</i>	11	11
X0327979	PAVEMENT MARKING REMOVAL - GRINDING	SQ FT	37	37
X2080250	TRENCH BACKFILL, SPECIAL	CU YD	7.8	7.8
X4402020	CONCRETE MEDIAN SURFACE REMOVAL	SQ FT	289	289

8

MODEL Default
 FILE NAME: \\ill044EBIDINTEG\illinois.gov\FWIDOT\Documents\DOT\Offices\District 8\Projects\District 8\Projects\827975\CAD\Drawings\827975-911-1.dwg

FILE NAME =	USER NAME = prestonm	DESIGNED -	REVISED -	STATE OF ILLINOIS DEPARTMENT OF TRANSPORTATION	SUMMARY OF QUANTITIES	F.A.P. RTE.	SECTION	COUNTY	TOTAL SHEETS	SHEET NO.	
		CHECKED -	REVISED -			805	82-975-1	ST. CLAIR	8	3	
		DATE -	REVISED -			SCALE: SHEET OF SHEETS STA. TO STA.		CONTRACT NO. 76K93			
						ILLINOIS FED. AID PROJECT					

REV

ELECTRICAL GENERAL NOTES

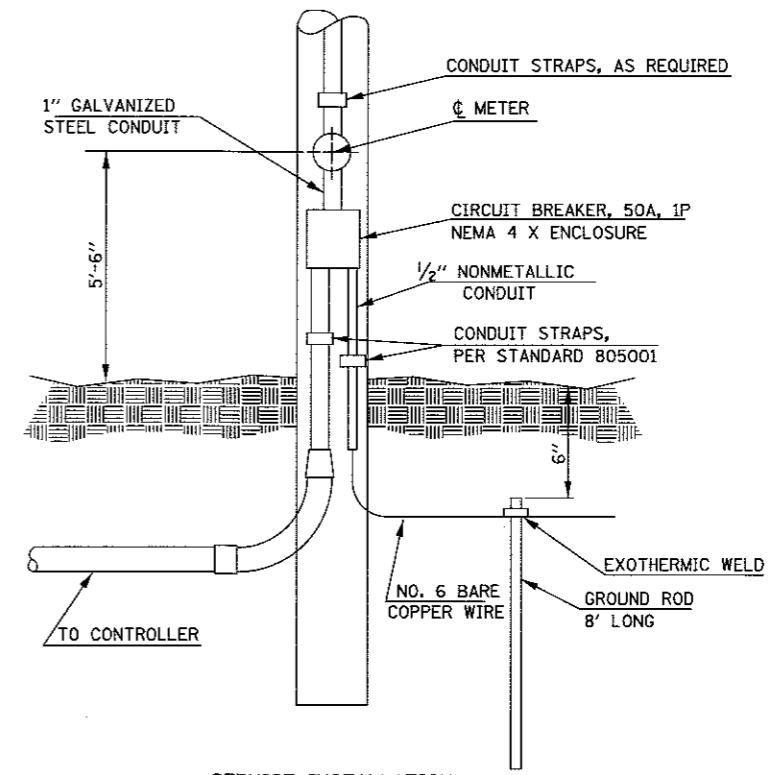
- ALL VEHICLE AND PEDESTRIAN SIGNAL HEADS SHALL HAVE 12" SECTIONS. MOUNTING HARDWARE SHALL BE UNPAINTED ALUMINUM. ALL BOLTS, SCREWS, NUTS AND WASHERS SHALL BE STAINLESS STEEL. ANTI-SEIZE PASTE COMPOUND SHALL BE USED ON ALL MOUNTING HARDWARE FIELD CONNECTIONS.
- BACKPLATES SHALL BE RETROREFLECTIVE ABS PLASTIC.
- THE CONTROLLER CABINET SHALL BE UNPAINTED ALUMINUM.
- THE LOCATION OF MAST ARM SUPPORTS SHALL BE APPROVED BY THE ENGINEER BEFORE FOUNDATIONS ARE CONSTRUCTED. MAST ARM POLES SHALL BE LOCATED A MINIMUM OF 10 FEET FROM THE EDGE OF PAVEMENT OR 2 FEET FROM THE EDGE OF SHOULDER, WHICHEVER DISTANCE IS GREATER. IN CURBED SECTIONS, THE MAST ARM POLES SHALL BE LOCATED A MINIMUM OF 5 FEET FROM THE FACE OF THE CURB. THESE DISTANCES ARE TO THE NEAR FACE OF THE MAST ARM POLE.
- ALL TRAFFIC SIGNAL CABLES SHALL BE #14 AWG STRANDED COPPER UNLESS OTHERWISE SPECIFIED. TERMINAL ENDS SHALL HAVE CRIMPED-ON RING TONGUE CONNECTORS.
- THE LOCATION OF ALL DETECTOR LOOPS SHALL BE APPROVED BY THE ENGINEER BEFORE ANY SLOTS ARE SAWED IN THE PAVEMENT.
- DETECTOR LOOP LEAD-IN SPLICES SHALL BE MADE IN A HANDHOLE PER SECTION 873 OF THE STANDARD SPECIFICATIONS. CONDUCTORS SHALL BE SPLICED IN A RIGID MOLD FILLED WITH NON-HARDENING EPOXY FILLER. ROSIN-CORE SOLDER SHALL BE USED.
- CALL DELAY SHALL NOT FUNCTION WHEN THE RELATED PHASES ARE IN THE GREEN MODE.
- CALL CARRY-OVER SHALL FUNCTION ONLY WHEN THE RELATED PHASES ARE IN THE GREEN MODE.
- ALL INDUCTIVE LOOP DETECTORS SUPPLIED FOR THIS PROJECT SHALL HAVE THE CAPACITY OF OPERATING WITH BOTH DELAY AND EXTENSION MODES ACTIVE, IF A TIME SETTING IS PROGRAMMED. THEY SHALL BE RACK MOUNTED.
- ALL HANDHOLES SHALL BE CAST-IN-PLACE PORTLAND CEMENT CONCRETE (PER ARTICLE 814.03(b)). THE CAST IN PLACE LEGEND IN THE COVER SHALL BE "TRAFFIC SIGNALS". SLOPE HANDHOLE COVERS TO MATCH PROPOSED GRADE ELEVATIONS.
- ILLINOIS STATE LAW REQUIRES A 48 HOUR NOTICE BE GIVEN TO UTILITIES BEFORE DIGGING. FIELD MARKING OF FACILITIES MAY BE OBTAINED BY CONTACTING J.U.L.I.E. OR FOR NON-MEMBERS, THE UTILITY COMPANY DIRECTLY. AGENCIES KNOWN TO HAVE FACILITIES WITHIN THE PROJECT AREA ARE AS FOLLOWS:
 - CLINTON COUNTY ELECTRIC COOPERATIVE, INC. (ELECTRIC)
 - FRONTIER COMMUNICATIONS (COMMUNICATIONS)
 - VILLAGE OF NEW BADEN (WATER & SANITARY SEWER)
 - WINDSTREAM KDL, INC. (COMMUNICATIONS)

(MEMBERS OF J.U.L.I.E. PHONE (800) - 892-0123 ARE INDICATED BY *) NON-J.U.L.I.E. MEMBERS MUST BE NOTIFIED INDIVIDUALLY.
- ESTIMATED DEPTHS OF THE CONCRETE FOUNDATIONS FOR THE MAST ARM SUPPORT POLES ARE AS FOLLOWS:
 - N-W CORNER: 12'-6" DEEP
 - N ISLAND: 12'-6" DEEP
 - S-E CORNER: 12'-6" DEEP

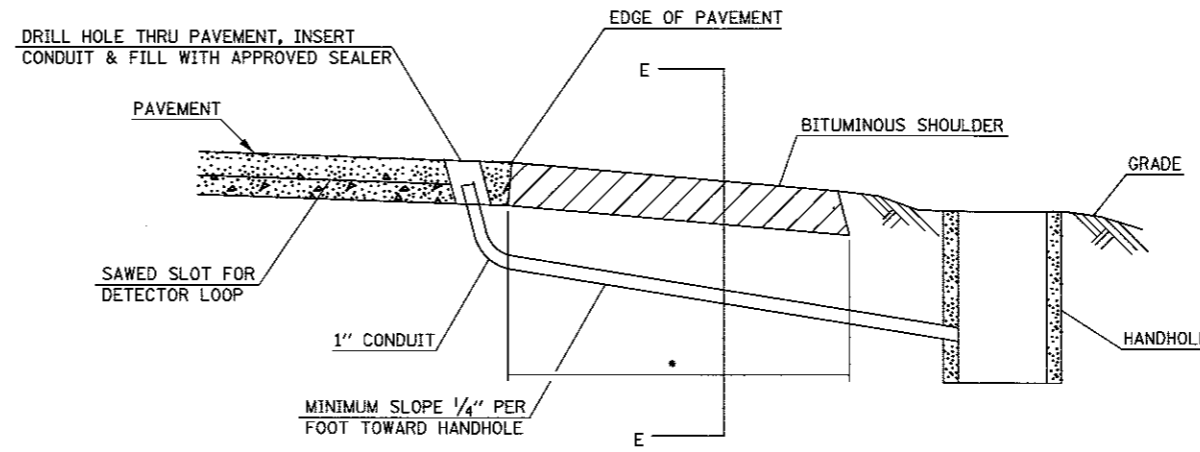
FINAL DEPTHS WILL BE DETERMINED BY THE DEPARTMENT FROM THE SOIL BORING DATA.
- THE RESIDENT ENGINEER SHALL VERIFY THE EXISTENCE OF HIGHWAY LIGHTING AND/OR INTELLIGENT TRANSPORTATION SYSTEMS (I.T.S.) UTILITIES WITHIN THE PROJECT LIMITS. IF HIGHWAY LIGHTING AND/OR I.T.S. EXISTS WITHIN THE PROJECT LIMITS, AND IF THESE ITEMS REQUIRE LOCATING, THE CONTRACTOR SHALL BE DIRECTED TO DO SO ACCORDING TO SECTION 803 OF THE STANDARD SPECIFICATIONS.

TRAFFIC SIGNALS LEGEND

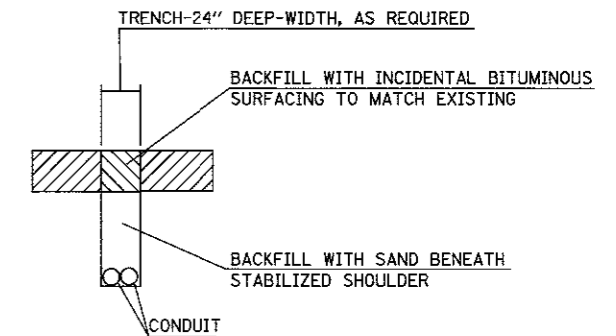
- GSC GALVANIZED STEEL CONDUIT
- PVCC POLYVINYL CHLORIDE CONDUIT
- PROPOSED SIGNAL HEAD WITH BACKPLATE, MAST ARM MOUNTED
- PROPOSED HANDHOLE
- PROPOSED DOUBLE HANDHOLE
- PROPOSED DETECTOR LOOP
- PROPOSED CONTROLLER
- PROPOSED CONDUIT
- PROPOSED SERVICE INSTALLATION
- PROPOSED SIGNAL POST



SERVICE INSTALLATION TYPE A
NOT TO SCALE



• LIMITS OF "TRENCH BACKFILL (SPECIAL)"



SEC. E-E

DETAIL TRENCH BACKFILL (SPECIAL)
(NO SCALE)

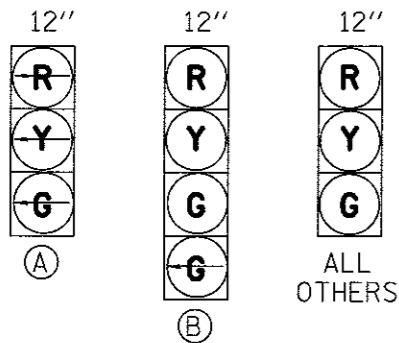
STATE OF ILLINOIS
DEPARTMENT OF TRANSPORTATION

FILE NAME =	USER NAME = prestonme	DESIGNED -	REVISED -
ca:\pw_work\pwsdot\prestonme\d8523628\076K93-shr-ta.dgn	76K93-shr-ta.dgn	DRAWN -	REVISED -
PLOT SCALE = 39.9955' / in.		CHECKED -	REVISED -
PLOT DATE = 8/24/2017		DATE -	REVISED -

SCALE:	SHEET	OF	SHEETS	STA.	TO	STA.
--------	-------	----	--------	------	----	------

F.A.P. RTE.	SECTION	COUNTY	TOTAL SHEETS	SHEET NO.
805	82-9TS-1	ST. CLAIR	8	4
CONTRACT NO. 76K93				
ILLINOIS FED. AID PROJECT				

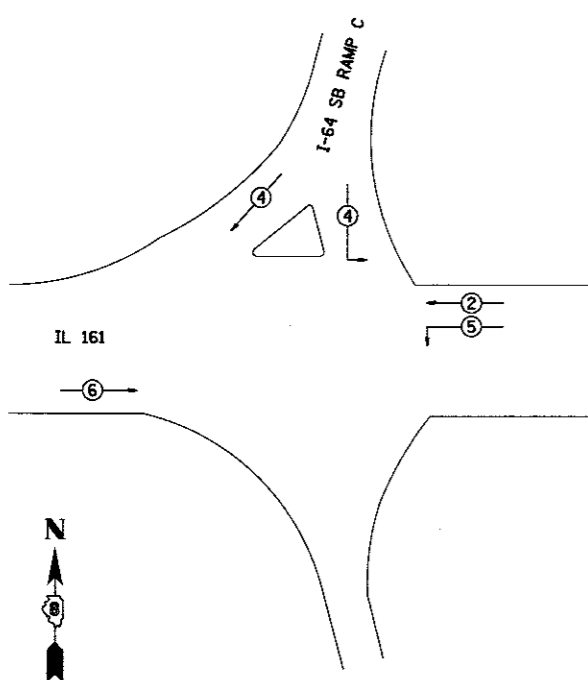
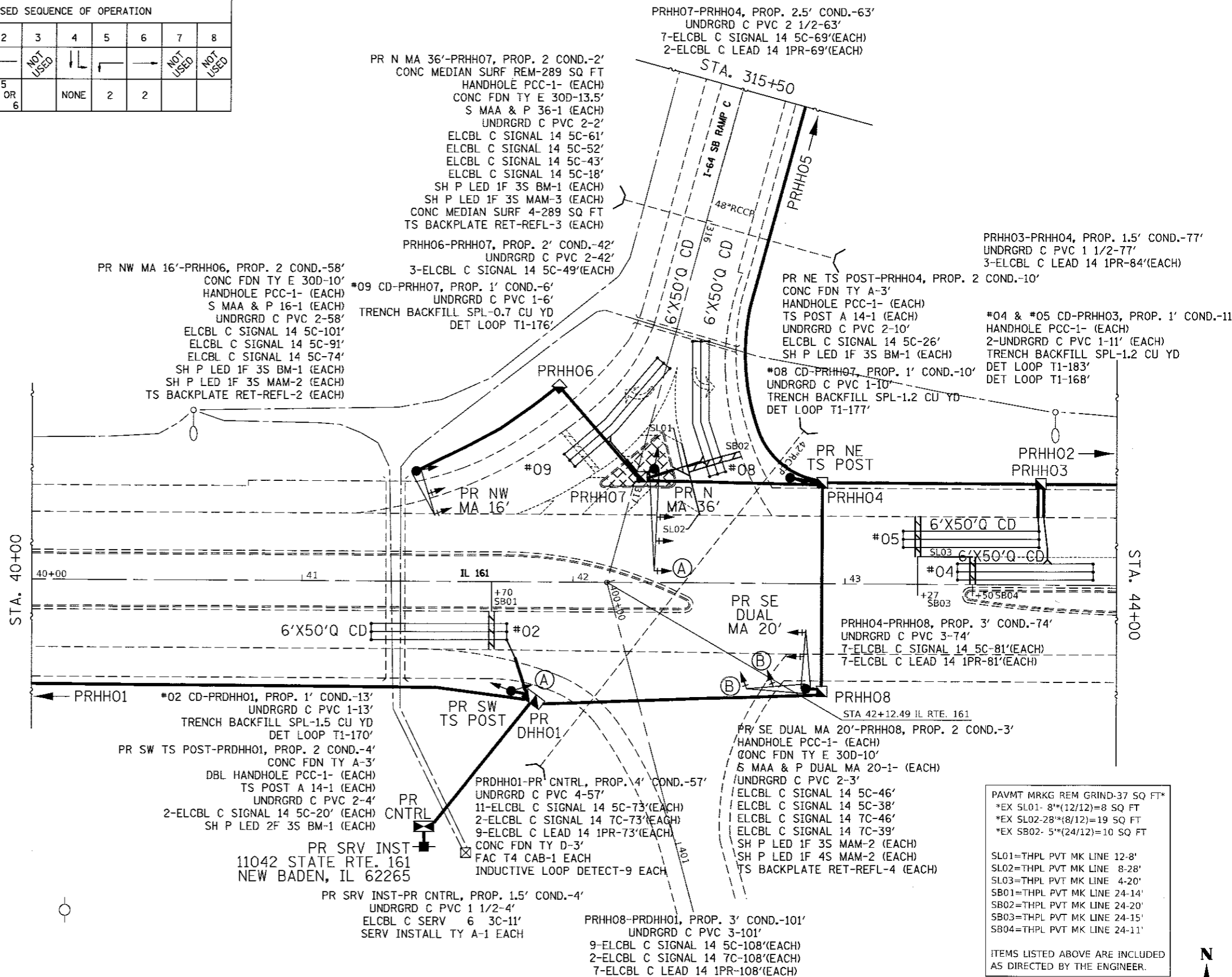
MODEL: Default
FILE NAME: c:\pw_work\pwsdot\prestonme\d8523628\076K93-shr-ta.dgn



PROPOSED TRAFFIC SIGNAL FACES

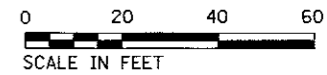
PROPOSED FULL-ACTUATED CONTROLLER

PROPOSED SEQUENCE OF OPERATION								
PHASE	1	2	3	4	5	6	7	8
MOVEMENT	NOT USED	←	NOT USED	↓	→	→	NOT USED	NOT USED
CONCURRENT MOVEMENT PERMITTED		5 OR 6		NONE	2	2		



PHASE DESIGNATION DIAGRAM

- PAVMT MRKG REM GRIND-37 SQ FT*
- *EX SL01- 8*(12/12)=8 SQ FT
 - *EX SL02-28*(8/12)=19 SQ FT
 - *EX SB02- 5*(24/12)=10 SQ FT
- SL01=THPL PVT MK LINE 12-8'
- SL02=THPL PVT MK LINE 8-28'
- SL03=THPL PVT MK LINE 4-20'
- SB01=THPL PVT MK LINE 24-14'
- SB02=THPL PVT MK LINE 24-20'
- SB03=THPL PVT MK LINE 24-15'
- SB04=THPL PVT MK LINE 24-11'
- ITEMS LISTED ABOVE ARE INCLUDED AS DIRECTED BY THE ENGINEER.



MODEL: Default
FILE NAME: C:\pwwork\pwwork\prestonme\0523620\0876K93-shr-cs.dgn

FILE NAME =	USER NAME = prestonme	DESIGNED -	REVISED -
FILE NAME =	FILE NAME =	DRAWN -	REVISED -
PLOT SCALE = 39.9955' / in.	FILE NAME =	CHECKED -	REVISED -
PLOT DATE = 8/24/2017	FILE NAME =	DATE -	REVISED -

STATE OF ILLINOIS
DEPARTMENT OF TRANSPORTATION

IL 161 AND I-64 RAMP C
TRAFFIC SIGNAL PLANS
1 OF 2

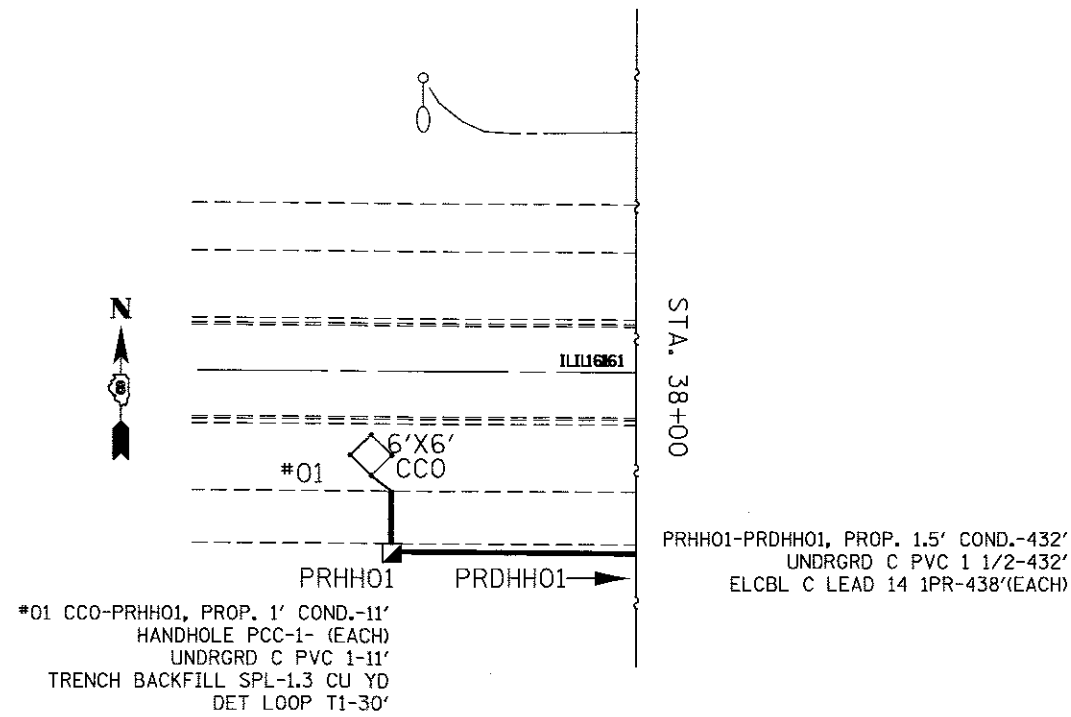
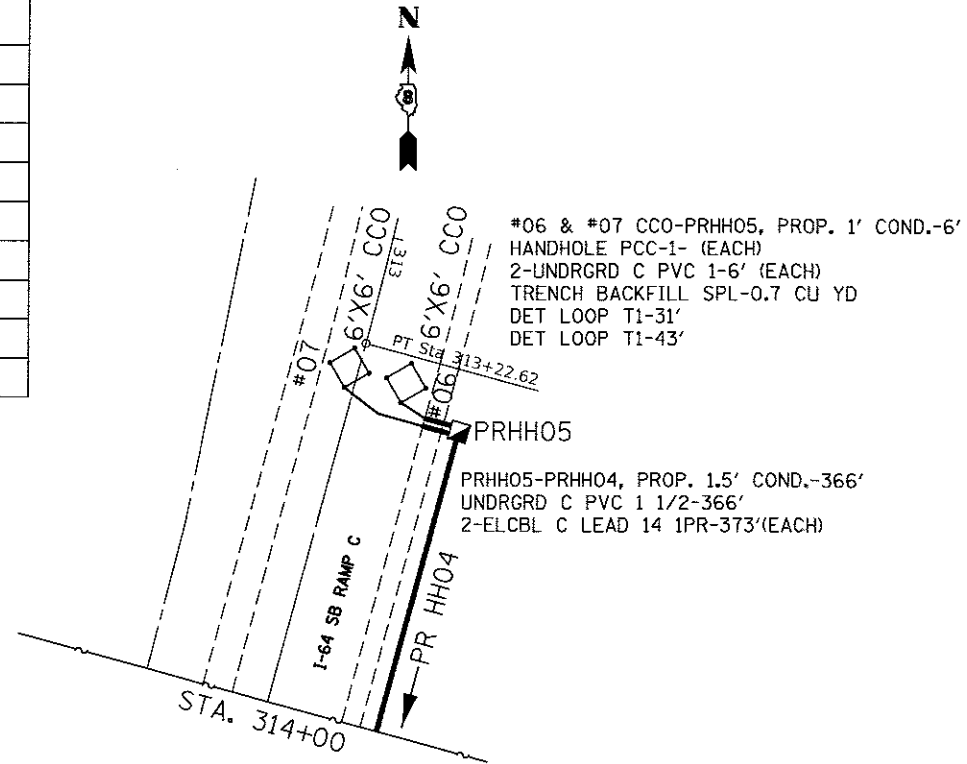
SCALE: SHEET OF SHEETS STA. TO STA.

F.A.P. RTE. 805	SECTION 82-9TS-1	COUNTY ST. CLAIR	TOTAL SHEETS 8	SHEET NO. 5
CONTRACT NO. 76K93			ILLINOIS FED. AID PROJECT	

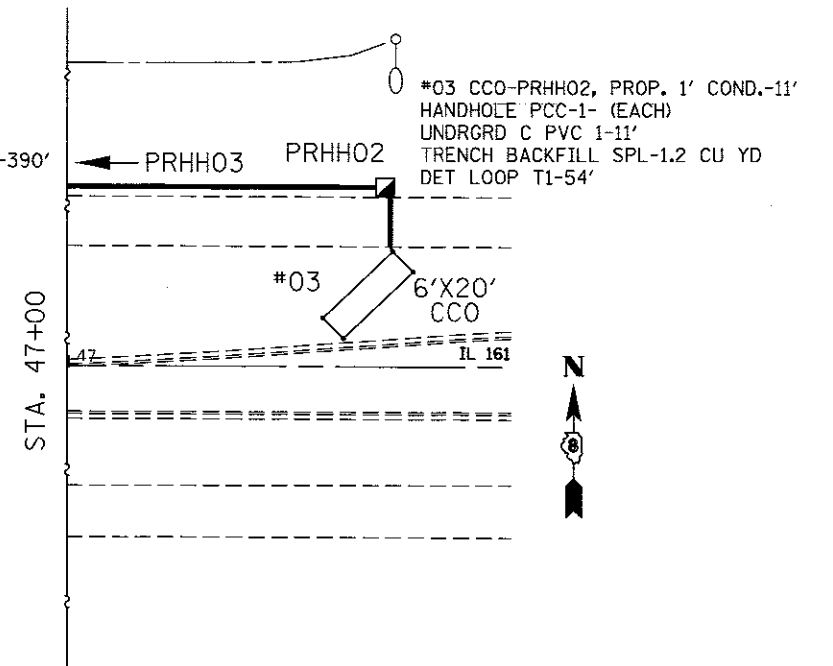
LOOP#	PHASE # (Φ)	LOOP SIZE	REQUIRED # OF TURNS	CALCULATED INDUCTANCE MICROHENRIES (μH)	CALCULATED RESISTANCE OHMS (Ω)
1. EB CCO	6	6' X 6'	6	371.04	3.00
2. EB THRU CD	6	6' x 50'(Q)	3-6-3	806.68	2.06
3. WB CCO	2	6' X 20'	5	531.73	4.43
4. WB LT CD	5	6' x 50'(Q)	3-6-3	868.94	3.48
5. WB THRU CD	2	6' x 50'(Q)	3-6-3	865.64	3.40
6. SB CCO 1	4	6' X 6'	7	508.59	3.66
7. SB CCO 2	4	6' X 6'	7	511.23	3.72
8. SB LT CD	4	6' x 50'(Q)	3-6-3	864.32	3.37
9. SB RT CD	4	6' x 50'(Q)	3-6-3	863.22	3.35

THE ABOVE VALUES ARE CALCULATED OF COMBINED LOOP AND LEAD-IN INDUCTANCE AND RESISTANCE. ACTUAL MEASURED VALUES SHOULD BE WITHIN +/- 20% OF THESE VALUES.

(Q)=QUADRAPOLE



PRHH02-PRHH03, PROP. 1.5' COND.-390'
UNDRGRD C PVC 1 1/2-390'
ELCBL C LEAD 14 1PR-397'



STATE OF ILLINOIS
DEPARTMENT OF TRANSPORTATION

IL 161 AND I-64 RAMP C
TRAFFIC SIGNAL PLANS
2 OF 2

F.A.P. RTE. 805	SECTION 82-9T5-1	COUNTY ST. CLAIR	TOTAL SHEETS 8	SHEET NO. 6
CONTRACT NO. 76K93			ILLINOIS FED. AID PROJECT	

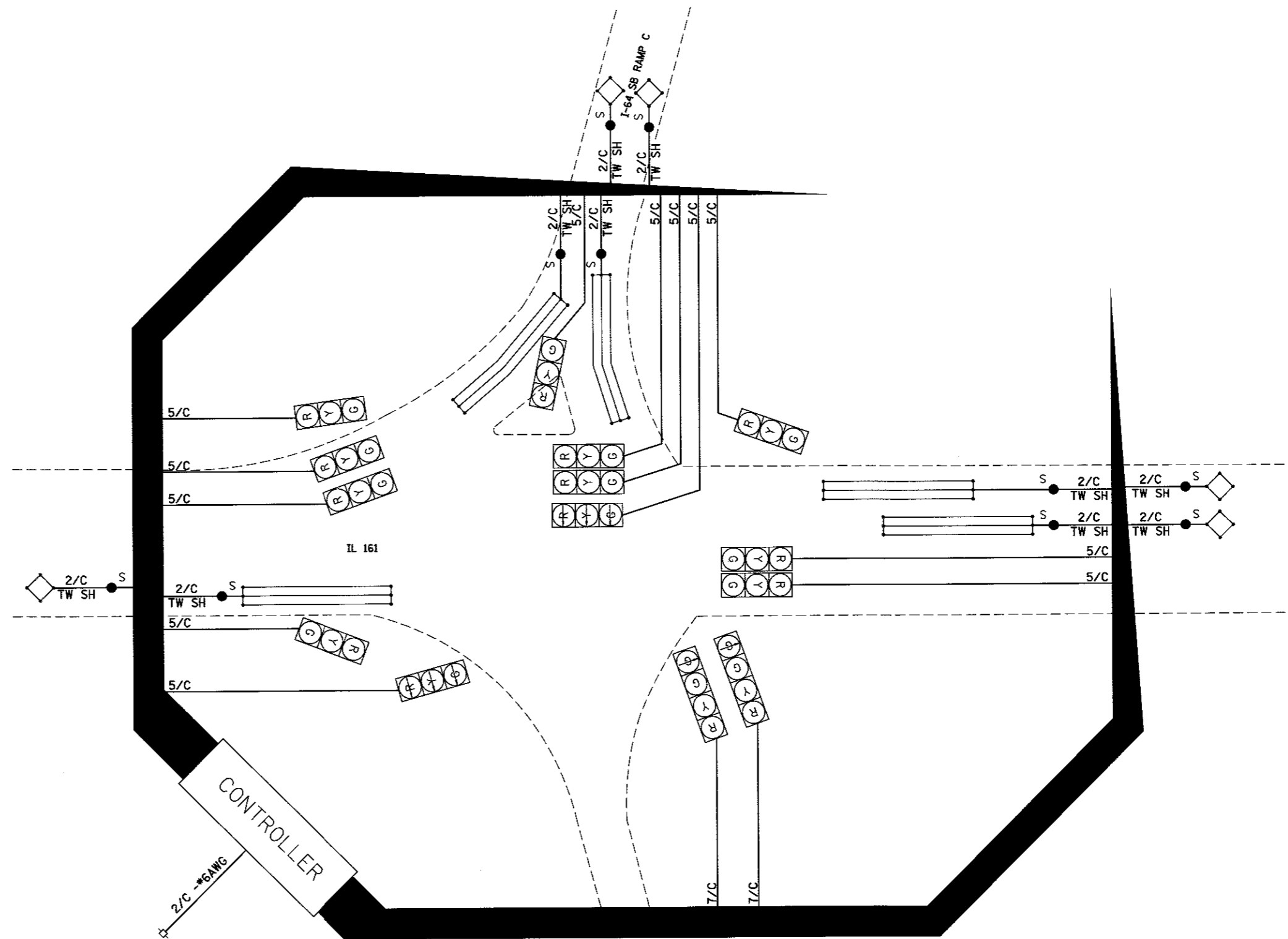
MODEL: Default
FILE NAME: c:\pwork\pwork\prestome\0523620\0876K93-shr-ta.dgn

FILE NAME =	USER NAME = prestome	DESIGNED -	REVISED -
c:\pwork\pwork\prestome\0523620\0876K93-shr-ta.dgn		DRAWN -	REVISED -
PLOT SCALE = 39.9955' / in.		CHECKED -	REVISED -
PLOT DATE = 8/24/2017		DATE -	REVISED -

SCALE: SHEET OF SHEETS STA. TO STA.

CABLE DIAGRAM LEGEND

- ELECTRIC CABLE IN CONDUIT
- EXISTING ELECTRIC CABLE IN CONDUIT
- S CABLE SPLICE (SEE GENERAL NOTES)
- 2/C INDICATES NUMBER OF CONDUCTORS IN CABLE
- ID IN ELECTRIC CABLE LEAD-IN, 1 PAIR
- CD CALL DELAY (SEE GENERAL NOTES)
- CCO CALL CARRY OVER (SEE GENERAL NOTES)
- SERVICE INSTALLATION
- #6 INDICATES AMERICAN WIRE GAUGE (AWG) SIZE 6 CONDUCTORS (SEE GENERAL NOTES)



MODEL: Default
 FILE NAME: c:\p\work\p\dot\preston\ld8523628\0876K93-ht-ts.dgn

FILE NAME *	USER NAME = prestonme	DESIGNED -	REVISED -
		DRAWN -	REVISED -
		CHECKED -	REVISED -
		DATE -	REVISED -
	PLOT SCALE = 39.9955" / in.		
	PLOT DATE = 8/24/2017		

STATE OF ILLINOIS
DEPARTMENT OF TRANSPORTATION

IL 161 AND I-64 RAMP C
CABLE DIAGRAM

SCALE: SHEET OF SHEETS STA. TO STA.

F.A.P. RTE.	SECTION	COUNTY	TOTAL SHEETS	SHEET NO.
805	82-9TS-1	ST. CLAIR	8	7
CONTRACT NO. 76K93				
ILLINOIS FED. AID PROJECT				



Illinois Department of Transportation
Division of Highways
Illinois Department of Transportation

SOIL BORING LOG

Page 1 of 1
Date 7/25/17

ROUTE FAP 805 DESCRIPTION IL 161 at I-64 Eastbound Ramps LOGGED BY VPG

SECTION 82-9TS-1 LOCATION NE 14, SEC. 14, TWP. 1N, RNG. 6W, 3 PM

COUNTY St. Clair DRILLING METHOD Hand Auger HAMMER TYPE

STRUCT. NO. Station	D E P T H	B L O W S	U C S	M O I S T	Surface Water Elev.		Groundwater Elev.:	First Encounter	Upon Completion	After	Hrs.
					ft	ft					
CONCRETE			NC	19							
Sandy LOAM with Some Coal A-1-b(0) See Class 1 ft			3.00	14							
			3.00	24							
Gray Silty Clay LOAM with Some Sand A-4(7) See Class 1 ft			3.50	27							
			3.00	28							
			3.00	24							
			2.50	25							
			2.25	25							
			2.50	25							
			2.75	24							
			3.00	26							
			2.50	24							
			2.75	26							
			3.00	28							
			2.50	24							
END OF HAND AUGER											
Pocket Penetrometer used for Qu											
** Hole Filled Upon Completion											

The Unconfined Compressive Strength (UCS) Failure Mode is indicated by (B-Bulge, S-Shear, P-Penetrometer)
The SPT (N value) is the sum of the last two blow values in each sampling zone (AASHTO T206)

BBS, from 137 (Rev. 8-99)



Illinois Department of Transportation
Division of Highways
Illinois Department of Transportation

SOIL BORING LOG

Page 1 of 1
Date 7/29/17

ROUTE FAP 805 DESCRIPTION IL 161 at I-64 Eastbound Ramps LOGGED BY VPG

SECTION 82-9TS-1 LOCATION NE 14, SEC. 14, TWP. 1N, RNG. 6W, 3 PM

COUNTY St. Clair DRILLING METHOD Hand Auger HAMMER TYPE

STRUCT. NO. Station	D E P T H	B L O W S	U C S	M O I S T	Surface Water Elev.		Groundwater Elev.:	First Encounter	Upon Completion	After	Hrs.
					ft	ft					
Gravelly Silt LOAM A-7-5(16) See Class 1 ft				1.00	12						
				2.00	20						
				2.75	19						
Black and Gray CLAY with Sand				2.00	22						
				1.75	23						
Gray Silt LOAM with Some Sand A-6(12) See Class 5 ft				1.75	23						
				2.00	24						
				2.50	23						
				2.50	27						
				2.50	27						
				2.50	25						
				2.75	27						
END OF HAND AUGER											
Pocket Penetrometer used for Qu											
** Hole Filled Upon Completion											

The Unconfined Compressive Strength (UCS) Failure Mode is indicated by (B-Bulge, S-Shear, P-Penetrometer)
The SPT (N value) is the sum of the last two blow values in each sampling zone (AASHTO T206)

BBS, from 137 (Rev. 8-99)



Illinois Department of Transportation
Division of Highways
Illinois Department of Transportation

SOIL BORING LOG

Page 1 of 1
Date 7/25/17

ROUTE FAP 805 DESCRIPTION IL 161 at I-64 Eastbound Ramps LOGGED BY VPG

SECTION 82-9TS-1 LOCATION NE 14, SEC. 14, TWP. 1N, RNG. 6W, 3 PM

COUNTY St. Clair DRILLING METHOD Hand Auger HAMMER TYPE

STRUCT. NO. Station	D E P T H	B L O W S	U C S	M O I S T	Surface Water Elev.		Groundwater Elev.:	First Encounter	Upon Completion	After	Hrs.
					ft	ft					
ASPHALT				3.50	17						
Silty LOAM with Some Rocks A-6(11) See Class 1 ft				4.00	20						
				3.00	26						
Silty Clay LOAM A-4(8) See Class 5 ft				2.75	30						
				3.00	24						
				2.50	29						
				2.50	28						
				2.50	27						
				2.50	26						
				2.50	26						
				3.00	27						
				2.50	28						
END OF HAND AUGER											
Pocket Penetrometer used for Qu											
** Hole Filled Upon Completion											

The Unconfined Compressive Strength (UCS) Failure Mode is indicated by (B-Bulge, S-Shear, P-Penetrometer)
The SPT (N value) is the sum of the last two blow values in each sampling zone (AASHTO T206)

BBS, from 137 (Rev. 8-99)

MODEL: Default
FILE NAME: c:\pwork\pwork\prestonne\0523620\0523620-17-17.dgn

FILE NAME =	USER NAME = prestonne	DESIGNED -	REVISED -
c:\pwork\pwork\prestonne\0523620\0523620-17-17.dgn		DRAWN -	REVISED -
PLOT SCALE = 39.9955' / in.		CHECKED -	REVISED -
PLOT DATE = 8/24/2017		DATE -	REVISED -

**STATE OF ILLINOIS
DEPARTMENT OF TRANSPORTATION**

SOIL BORINGS LOGS

SCALE: SHEET OF SHEETS STA. TO STA.

F.A.P. RTE.	SECTION	COUNTY	TOTAL SHEETS	SHEET NO.
805	82-9TS-1	ST. CLAIR	8	8
CONTRACT NO. 76K93				
ILLINOIS FED. AID PROJECT				