

				CONSTRUCTION CODE 004	
				80% FEDERAL 20% STATE	100% LOCAL VILLAGE OF WATERMAN
PAY ITEM NUMBER	DESIGNATION	UNIT	TOTAL QUANTITY	BOX CULVERT	SANITARY SEWER
				S.N. 019-2562 (PR)	
28200200	FILTER FABRIC	SQ YD	55	55	
31100500	SUBBASE GRANULAR MATERIAL, TYPE A 6"	SQ YD	298	298	
35501314	HOT-MIX ASPHALT BASE COURSE, 7 1/2"	SQ YD	256	256	
40600290	BITUMINOUS MATERIALS (TACK COAT)	POUND	481	481	
40600370	LONGITUDINAL JOINT SEALANT	FOOT	396	396	
40600400	MIXTURE FOR CRACKS, JOINTS, AND FLANGEWAYS	TON	4	4	
40600982	HOT-MIX ASPHALT SURFACE REMOVAL - BUTT JOINT	SQ YD	36	36	
40602985	HOT-MIX ASPHALT BINDER COURSE, IL-9.5, N70	TON	62	62	
40604052	HOT-MIX ASPHALT SURFACE COURSE, IL-9.5, MIX "C", N70	TON	103	103	
44000100	PAVEMENT REMOVAL	SQ YD	305	305	①
44000156	HOT-MIX ASPHALT SURFACE REMOVAL, 1 3/4"	SQ YD	628	628	
44004250	PAVED SHOULDER REMOVAL	SQ YD	241	241	
48203029	HOT-MIX ASPHALT SHOULDERS, 8"	SQ YD	561	561	
50100100	REMOVAL OF EXISTING STRUCTURES	EACH	1	1	

* = SPECIALTY ITEM

MODEL: Default
FILE NAME: Z:\Shared\Projects\DOT\03-029-22 - OSEH\03_Design\02_CADD_Sheets\W03\0366653-shit-sum-quantities-2.dgn



USER NAME = @avanMaringanti	DESIGNED - KLN	REVISED -
	DRAWN - CC	REVISED -
PLOT SCALE = 1000.0000 ' / in.	CHECKED - MM	REVISED -
PLOT DATE = 10/19/2023	DATE - 10/02/2023	REVISED -

**STATE OF ILLINOIS
DEPARTMENT OF TRANSPORTATION**

**IL ROUTE 23
SUMMARY OF QUANTITIES**

SCALE: SHEET 2 OF 6 SHEETS STA. TO STA.

F.A.P. RTE.	SECTION	COUNTY	TOTAL SHEETS	SHEET NO.
68	30CR-2538	DEKALB	52	4
			CONTRACT NO. 66L53	
		ILLINOIS	FED. AID PROJECT	

PAY ITEM NUMBER	DESIGNATION	UNIT	TOTAL QUANTITY	CONSTRUCTION CODE		
				004		
				80% FEDERAL 20% STATE	100% LOCAL VILLAGE OF WATERMAN	
				BOX CULVERT	SANITARY SEWER	
				S.N. 019-2562 (PR)		
50200100	STRUCTURE EXCAVATION	CU YD	448		448	
50800205	REINFORCEMENT BARS, EPOXY COATED	POUND	25,440		25,440	
50800515	BAR SPLICERS	EACH	64		64	
51500100	NAME PLATES	EACH	1		1	
52200020	TEMPORARY SOIL RETENTION SYSTEM	SQ FT	330		330	
54003000	CONCRETE BOX CULVERTS	CU YD	102		102	
54213660	PRECAST REINFORCED CONCRETE FLARED END SECTIONS 15"	EACH	1			1
58600101	GRANULAR BACKFILL FOR STRUCTURES	CU YD	90		90	
59100100	GEOCOMPOSITE WALL DR	SQ YD	131		131	
60100945	PIPE DRAINS 12"	FOOT	50		50	
61100605	MISCELLANEOUS CONCRETE	CU YD	6		6	
* 63000001	STEEL PLATE BEAM GUARDRAIL, TYPE A, 6 FOOT POSTS	FOOT	125		125	
* 63000360	LONG-SPAN GUARDRAIL OVER CULVERT, 18 FT 9 IN SPAN	FOOT	88		88	
* 63100167	TRAFFIC BARRIER TERMINAL, TYPE 1 (SPECIAL) TANGENT	EACH	4		4	
63200310	GUARDRAIL REMOVAL	FOOT	507		507	

* =SPECIALTY ITEM

MODEL: Default
FILE NAME: Z:\Shared\Projects\DOT\03-023-22 - OSEH\03_Design\02_CADD_Sheets\W03\0366653-shit-sum-quantities-3.dgn



USER NAME = @avanMaringanti	DESIGNED - KLN	REVISED -
	DRAWN - CC	REVISED -
PLOT SCALE = 1000.0000 ' / in.	CHECKED - MM	REVISED -
PLOT DATE = 10/19/2023	DATE - 10/02/2023	REVISED -

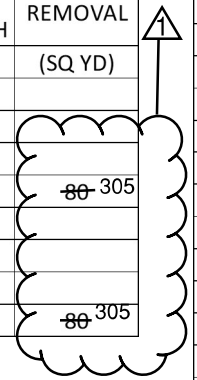
**STATE OF ILLINOIS
DEPARTMENT OF TRANSPORTATION**

**IL ROUTE 23
SUMMARY OF QUANTITIES**

SCALE: SHEET 3 OF 6 SHEETS STA. TO STA.

F.A.P. RTE.	SECTION	COUNTY	TOTAL SHEETS	SHEET NO.
68	30CR-2538	DEKALB	52	5
			CONTRACT NO. 66L53	
		ILLINOIS FED. AID PROJECT		

REMOVAL OF PAVING MATERIALS				
LOCATION	OFFSET	HMA SURFACE REMOVAL, 1 3/4"	HMA SURFACE REMOVAL, VARIABLE DEPTH	PAVEMENT REMOVAL
	(LT/RT)	(SQ YD)	(SQ YD)	(SQ YD)
STA 508+80.00 TO STA 510+32.06	LT/RT	291	269	
STA 510+32.06 TO STA 511+14.93	LT/RT			
STA 511+14.93 TO STA 512+40.00	LT/RT	383		
TOTAL		674	269	



LOCATION	OFFSET (LT/RT)	STEEL PLATE BEAM GUARDRAIL, TYPE A, 6 FOOT POSTS	TRAFFIC BARRIER TERMINAL, TYPE 1 (SPECIAL) TANGENT	LONG-SPAN GUARDRAIL OVER CULVERT, 18 FT 9 IN SPAN	GUARDRAIL REFLECTORS, TYPE A	FURNISHING AND ERECTING RIGHT OF WAY MARKERS	TELESCOPING STEEL SIGN SUPPORT	BASE FOR TELESCOPING STEEL SIGN SUPPORT	RELOCATE SIGN PANEL ASSEMBLY - TYPE A
		(FT)	(UNIT)	(FT)	(UNIT)	(EACH)	(FT)	(EACH)	(EACH)
STA 509+91.30 TO STA 510+41.30	RT	50	1						
STA 510+85.05 TO STA 510+97.55	RT	12.5	1						
STA 510+47.05 TO STA 510+59.55	LT	12.5	1						
STA 511+03.30 TO STA 511+53.30	LT	50	1						
STA 510+41.30 TO STA 510+85.05	RT			44					
STA 510+59.55 TO STA 511+03.30	LT			44					
STA 509+41.30 TO STA 511+47.50					4				
STA 509+97.05 TO STA 512+03.30					4				
STA 508+50.00 TO STA 512+40.00						8			
STA 509+98.00	18.4' RT						10	1	
STA 511+66.75	17.8' RT						10	1	
STA 511+81.50	28.8' RT								1
TOTAL		125	4	88	8	8	20	2	1

LOCATION	OFFSET (LT/RT)	MODIFIED URETHANE PAVEMENT MARKING - LINE 4" (WHITE)	MODIFIED URETHANE PAVEMENT MARKING - LINE 4" (WHITE SKIP LINE)	MODIFIED URETHANE PAVEMENT MARKING - LINE 4" (DOUBLE CENTERLINE)	RAISED REFLECTIVE PAVEMENT MARKER	RAISED REFLECTIVE PAVEMENT MARKER REMOVAL	PAVEMENT MARKING REMOVAL - WATERBLASTING	SHORT TERM PAVEMENT MARKING
		(FT)	(FT)	(FT)	(EACH)	(EACH)	(SQ FT)	(FT)
STA 505+04.10 TO STA 516+32.83	0				16	16	1399	
STA 505+14.00 TO STA 506+16.00	RT							115
STA 506+16.00 TO STA 515+17.00	LT							1745
STA 505+04.10 TO STA 516+32.83	LT	1229						
STA 505+64.10 TO STA 515+17.20	RT							
STA 505+64.10 TO STA 507+55.97	RT	214						
STA 507+55.97 TO STA 508+44.47	RT		25					
STA 508+44.47 TO STA 515+17.20	RT	749						
STA 505+04.10 TO STA 516+32.83	0			2482				
STA 505+04.00 TO STA 507+51.00	LT							246
STA 507+51.00 TO STA 513+60.00	RT							1185
STA 513+50.00 TO STA 515+43.00	LT							192
TOTAL		2192	25	2482	16	16	1399	3483

NOTE:
PAVEMENT MARKING QUANTITY INCLUDES 2 LAYERS OF MODIFIED URETHANE APPLICATION.

LOCATION	OFFSET (LT/RT)	SEEDING, CLASS 2A	NITROGEN FERTILIZER NUTRIENT	PHOSPHORUS FERTILIZER NUTRIENT	POTASSIUM FERTILIZER NUTRIENT	EROSION CONTROL BLANKET	PERIMETER EROSION BARRIER	STONE RIPRAP, CLASS A4	FILTER FABRIC	TEMPORARY EROSION CONTROL SEEDING	TEMPORARY DITCH CHECKS
		(ACRE)	(LBS)	(LBS)	(LBS)	(SQ YD)	(FT)	(SQ YD)	(SQ YD)	(POUND)	(FT)
STA 508+80.00 TO STA 510+53.12	RT	0.11	11	11	11	500	191			6.3	
STA 508+80.00 TO STA 510+82.39	LT	0.08	8	8	8	407	230			4.5	
STA 510+29.53 TO STA 510+59.81	RT							32	32		
STA 510+59.81 TO STA 512+40.00	RT	0.14	14	14	14	670	202			6.3	190
STA 510+82.39 TO STA 511+16.52	LT							23	23		
STA 510+90.91 TO STA 512+40.00	LT	0.06	6	6	6	212	124			2.7	
TOTAL		0.39	39	39	39	1789	747	55	55	20.0	190

MODEL: Default; FILE NAME: Z:\Share\Projects\BIDD\19022023\2 - OSEI\03_Draft\02_CADD_Sheets\W08\300666\3-SubstructureQuantities.dgn



USER NAME	CHISengCheong	DESIGNED	KLN	REVISED	01/04/2024 CC
DRAWN	CC	CHECKED	MM	REVISED	
PLOT SCALE	10.0000' / in.	DATE	10/02/2023	REVISED	
PLOT DATE	10/2/2023				

STATE OF ILLINOIS
DEPARTMENT OF TRANSPORTATION

IL ROUTE 23
SCHEDULE OF QUANTITIES

SCALE: SHEET 1 OF 2 SHEETS STA. TO STA.

F.A.P. RTE.	SECTION	COUNTY	TOTAL SHEETS	SHEET NO.
68	30CR-2538	DEKALB	52	11
CONTRACT NO. 66L53			ILLINOIS FED. AID PROJECT	

GENERAL NOTES

- The design fill height for this box varies from 0.96 ft. minimum to 3.21 ft. maximum.
- All Reinforcement bars shall be epoxy coated.
- Layout of the slope protection system may be varied to suit ground conditions in the field as directed by the Engineer.
- A cantilevered sheet piling design does not appear feasible and additional members or other retention systems may be necessary. The Contractor shall submit a temporary soil retention system design including plan details and calculations for review and acceptance by the Engineer.
- CONTRACTOR shall provide an in-stream work plan for review by the resident ENGINEER and written approval by the Army Corps prior to starting in-stream work. The cost of this shall be included in the cost of Concrete Box Culverts

INDEX OF SHEETS

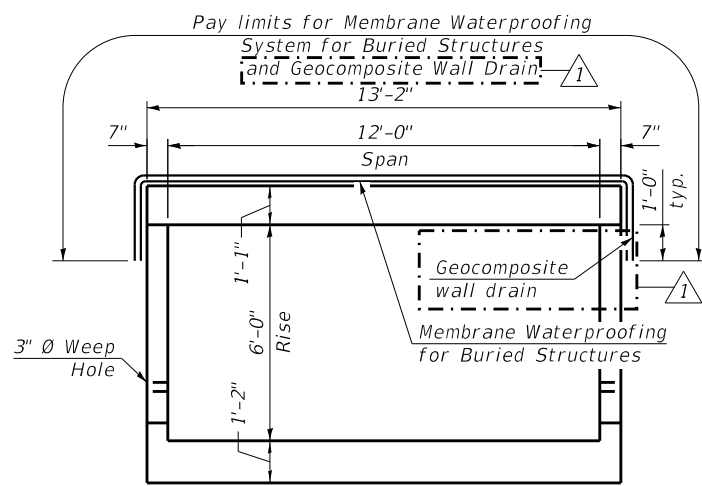
- S-1 General Plan and Elevation
- S-2 General Notes, Bill of Material & Index of Sheets
- S-3 Stage Construction Details
- S-4 Temporary Soil Retention System & Temporary Support System
- S-5 Culvert Reinforcement Details 1
- S-6 Culvert Reinforcement Details 2
- S-7 Culvert Reinforcement Details 3
- S-8 Culvert Reinforcement Details 4
- S-9 Bar Splicer Assembly and Mechanical Splicer Details
- S-10 Soil Borings
- S-11 Existing Structural Plans 1
- S-12 Existing Structural Plans 2
- S-13 Existing Structural Plans 3
- S-14 Existing Structural Plans 4

TOTAL BILL OF MATERIAL

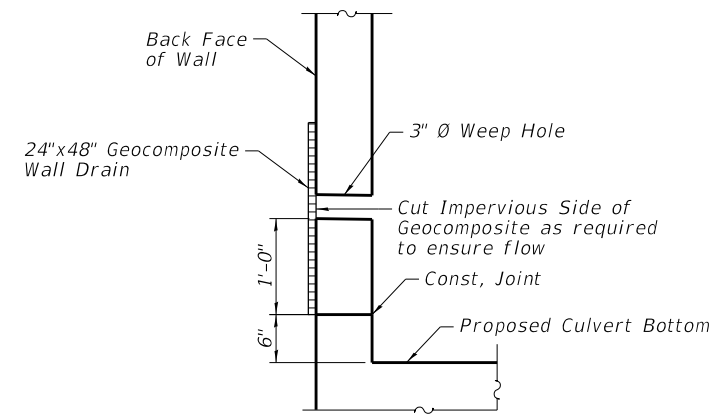
ITEM	UNIT	TOTAL
Porous Granular Embankment	Cu Yd	390
Removal Of Existing Structures	Each	1
Structure Excavation	Cu Yd	448
Temporary Soil Retention System	Sq Ft	330
Reinforcement Bars, Epoxy Coated	Pound	25,440
Bar Splicers	Each	64
Name Plates	Each	1
Concrete Box Culverts	Cu Yd	101.6
Granular Backfill For Structures	Cu Yd	90
Geocomposite Wall Drain	Sq Yd	131
Membrane Waterproofing System For Buried Structures	Sq Yd	116
Temporary Support System	Each	1

** Special Provision Item

* Nonwoven geotextile fabric shall conform to the requirements of Article 1080.01 of the Standard Specifications. The minimum weight of the fabric shall be 6 ounces per square yard.



MEMBRANE WATERPROOFING SYSTEM

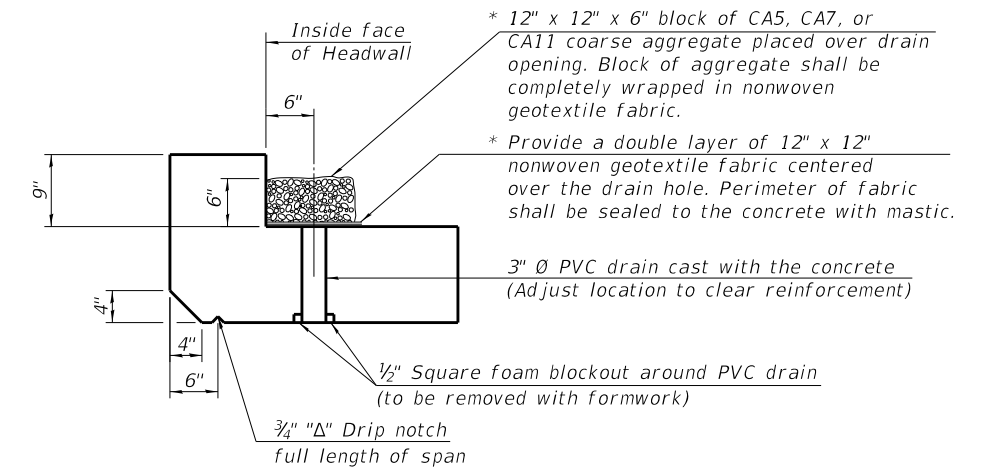


WEEP HOLE DRAIN DETAIL

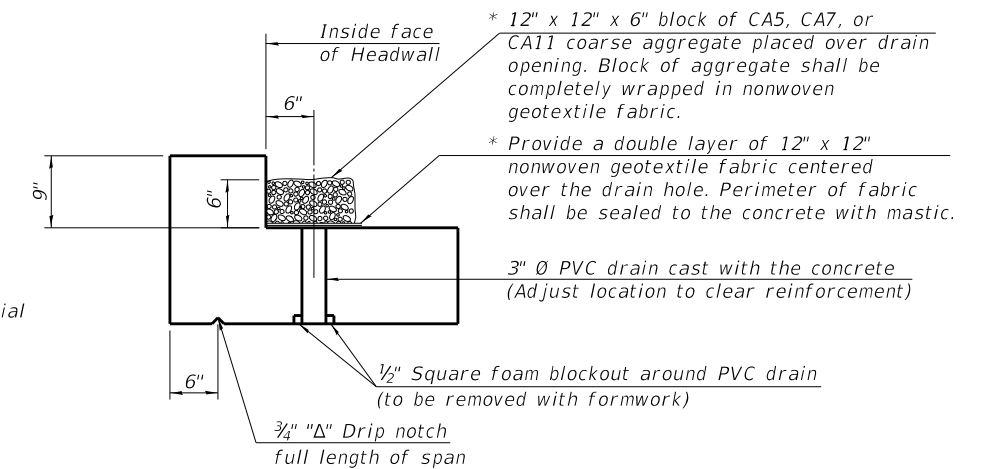
(Cost included in Concrete Box Culvert.)

STATION 510+72
BUILT BY
STATE OF ILLINOIS
FAP 68 SEC. 30CR-2538
LOADING HL-93
STR. NO. 019-2562

NAME PLATE
See Std. 515001



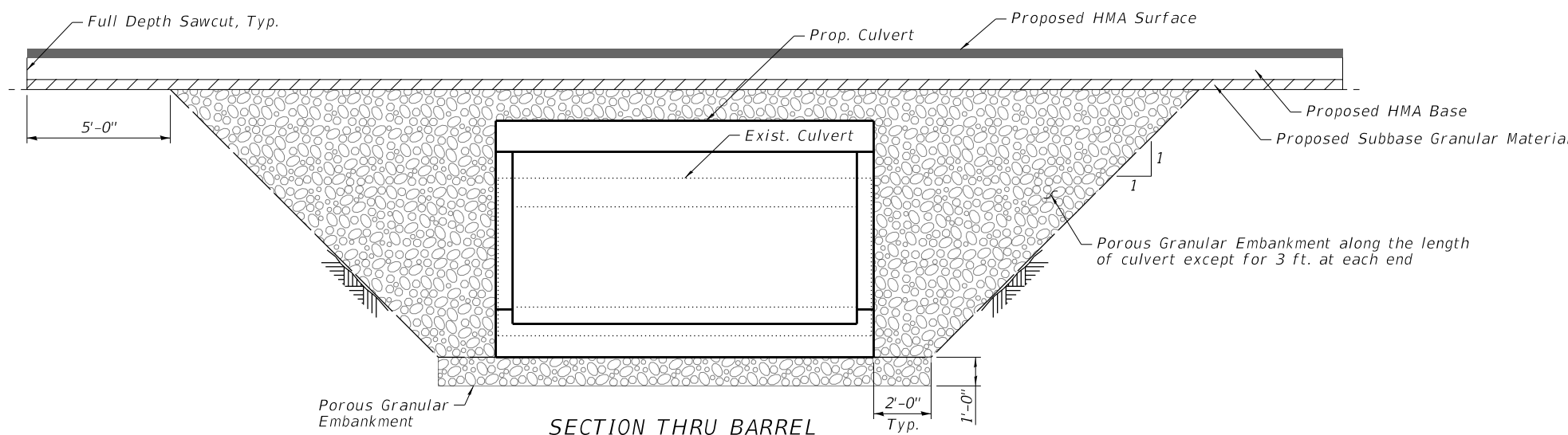
AT UPSTREAM END



AT DOWNSTREAM END

DRAIN DETAIL

(All costs associated with furnishing and constructing the above drain detail will not be measured for payment but shall be included in the contract unit price for Concrete Box Culvert.)



SECTION THRU BARREL

DATE PLOTTED = 1/4/2024 11:13:49 AM
PEN TABLE = 00213555.01.tbl
PLOT CONFIG = CGP-PDF.plt
FILE NAME = I:\PROJECTS\2024\11\01\0005\Structural\0366453-02-General Notes, Index, and BOM.tbl.dgn



USER NAME = Structural	DESIGNED - KEC	REVISED 1 01/04/24 KEC
PLOT SCALE = 0.1667' / in.	DRAWN - SBA	REVISED -
PLOT DATE = 1/4/2024	CHECKED - BWS	REVISED -
	DATE - 1/4/2024	REVISED -

**STATE OF ILLINOIS
DEPARTMENT OF TRANSPORTATION**

**GENERAL NOTES, BILL OF MATERIAL & INDEX OF SHEETS
STRUCTURE NO. 019-2562**

SHEET 5-2 OF 5-14 SHEETS

F.A.P. RTE.	SECTION	COUNTY	TOTAL SHEETS	SHEET NO.
68	30CR-2538	DEKALB	52	33
ILLINOIS FED. AID PROJECT			CONTRACT NO.	66L53