

STATE OF ILLINOIS  
DEPARTMENT OF TRANSPORTATION

FAU RTE	SECTION	COUNTY	TOTAL SHEETS	SHEET NO.
297A	2018-118-RS	WILL	13	1
ILLINOIS CONTRACT NO. 62H58				

D-91-074-19



**PROPOSED  
HIGHWAY PLANS**

FAU 0297A (BRIDGE STREET  
MOVABLE BRIDGE MAINTENANCE YARD  
105 BRIDGE STREET, JOLIET  
SECTION: 2018-118-RS  
PARKING IMPROVEMENT  
WILL COUNTY

C-91-268-19

FOR INDEX OF SHEETS, SEE SHEET NO. 2

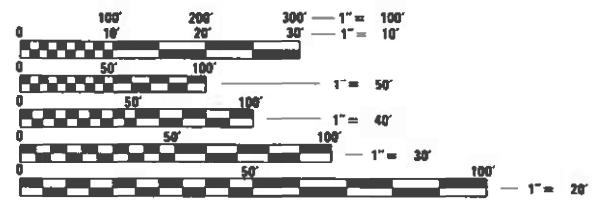
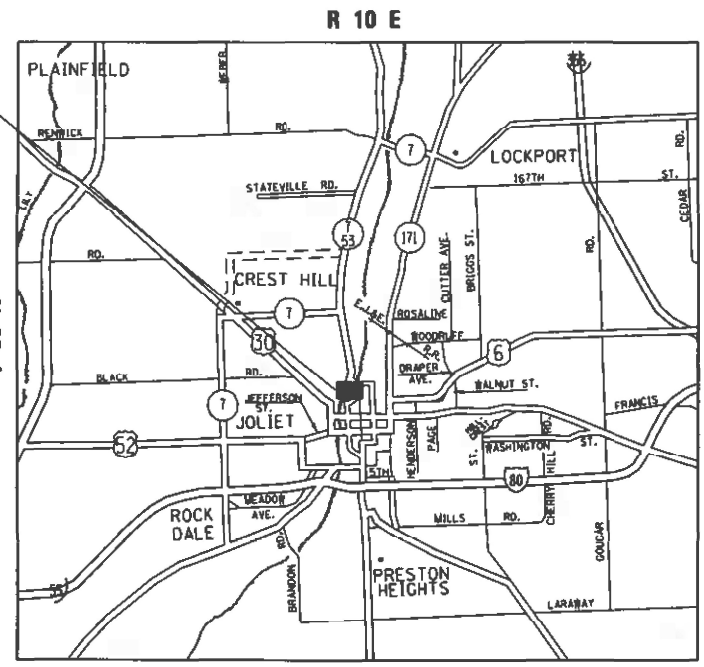
THIS PROJECT IS LOCATED IN  
THE CITY OF JOLIET

**TRAFFIC DATA:**

**BRIDGE STREET:**

2019 ADT = 3,000  
SPEED LIMIT = 45 MPH  
MAJOR COLLECTOR

IMPROVEMENT  
LOCATION



FULL SIZE PLANS HAVE BEEN PREPARED USING STANDARD ENGINEERING SCALES. REDUCED SIZED PLANS WILL NOT CONFORM TO STANDARD SCALES. IN MAKING MEASUREMENTS ON REDUCED PLANS, THE ABOVE SCALES MAY BE USED.

J.U.L.I.E.  
JOINT UTILITY LOCATION INFORMATION FOR EXCAVATORS  
1-800-892-0123  
OR 811

PROJECT ENGINEER: VESELIN VELICHKOV (847) 705-4432  
PROJECT MANAGER: FAWAD AQUEEL

CONTRACT NO. 62H58

GROSS & NET LENGTH = N/A (SPOT IMPROVEMENT)

STATE OF ILLINOIS  
DEPARTMENT OF TRANSPORTATION

SUBMITTED OCTOBER 16 20 23  
*[Signature]*  
REGIONAL ENGINEER

December 8, 2023  
*[Signature]*  
ENGINEER OF DESIGN AND ENVIRONMENT

December 8, 2023  
*[Signature]*  
DIRECTOR OF HIGHWAYS PROJECT IMPLEMENTATION

PRINTED BY THE AUTHORITY  
OF THE STATE OF ILLINOIS



SUMMARY OF QUANTITIES				CONSTRUCTION TYPE CODE					SUMMARY OF QUANTITIES				CONSTRUCTION TYPE CODE				
CODE NO	ITEM	UNIT	TOTAL QUANTITIES	0004 100% STATE					CODE NO	ITEM	UNIT	TOTAL QUANTITIES	0004 100% STATE				
20200100	EARTH EXCAVATION	CU YD	275	275					66400505	CHAIN LINK FENCE, 8'	FOOT	250	250				
21101615	TOPSOIL FURNISH AND PLACE, 4"	SO YD	400	400					* 66900200	NON-SPECIAL WASTE DISPOSAL	CU YD	240	240				
25000210	SEEDING, CLASS 2A	ACRE	0.25	0.25					* 66900530	SOIL DISPOSAL ANALYSIS	EACH	2	2				
25200110	SODDING, SALT TOLERANT	SO YD	400	400					* 66901001	REGULATED SUBSTANCES PRE-CONSTRUCTION PLAN	L SUM	1	1				
31101400	SUBBASE GRANULAR MATERIAL, TYPE B 6"	SO YD	1413	1413					* 66901003	REGULATED SUBSTANCES FINAL CONSTRUCTION REPORT	L SUM	1	1				
40600275	BITUMINOUS MATERIALS (PRIME COAT)	POUND	3178	3178					* 66901006	REGULATED SUBSTANCES MONITORING	CAL DA	5	5				
40600290	BITUMINOUS MATERIALS (TACK COAT)	POUND	318	318					67100100	MOBILIZATION	L SUM	1	1				
40603085	HOT-MIX ASPHALT BINDER COURSE, IL-19.0, N70	TON	238	238					70102620	TRAFFIC CONTROL AND PROTECTION, STANDARD 701501	L SUM	1	1				
40604062	HOT-MIX ASPHALT SURFACE COURSE, IL-9.5, MIX "D", N70	TON	119	119					* 72000100	SIGN PANEL - TYPE 1	SO FT	2	2				
42001300	PROTECTIVE COAT	SO YD	450	450					72900100	METAL POST - TYPE A	SO FT	12	12				
42400200	PORTLAND CEMENT CONCRETE SIDEWALK 5 INCH	SO FT	50	50					* 78000100	THERMOPLASTIC PAVEMENT MARKING - LETTERS AND SYMBOLS	SO FT	25	25				
44000100	PAVEMENT REMOVAL	SO YD	1413	1413					* 78000200	THERMOPLASTIC PAVEMENT MARKING - LINE 4"	FOOT	250	250				
44000600	SIDEWALK REMOVAL	SO FT	50	50					X1200036	SANITARY SERVICE CLEAN-OUT	EACH	1	1				
60603500	COMBINATION CONCRETE CURB AND GUTTER, TYPE B-6.06	FOOT	85	85					X4400501	COMBINATION CURB AND GUTTER REMOVAL AND REPLACEMENT LESS THAN OR EQUAL TO 10 FEET	FOOT	200	200				

\* = SPECIALTY ITEMS

FILE NAME =	USER NAME = yosenuresh	DESIGNED -	REVISED -
pw:\idat-pw\benley.com\PIWIDOT\Documents\VIDOT - Office\District\Projects\DIOT 419\ACAD\Drawings\DIOT 419-stt-plan.dwg		DRAWN -	REVISED -
		CHECKED -	REVISED -
		DATE -	REVISED -

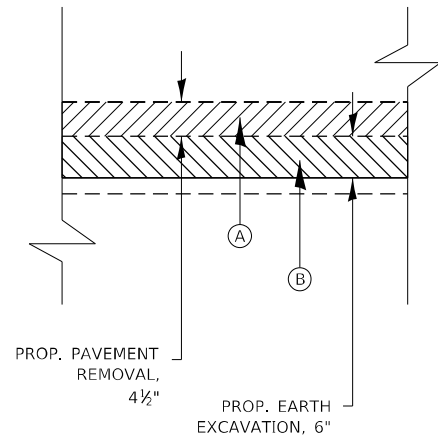
**STATE OF ILLINOIS  
DEPARTMENT OF TRANSPORTATION**

**MOVABLE BRIDGE MAINTENANCE YARD  
SUMMARY OF QUANTITIES**

SCALE: SHEET NO. OF SHEETS STA. TO STA.

FAU RTE.	SECTION	COUNTY	TOTAL SHEETS	SHEET NO.
297A	2018-118-R5	WILL	13	3
FED. ROAD DIST. NO. 1 ILLINOIS FED. AID PROJECT			CONTRACT NO. 62H58	





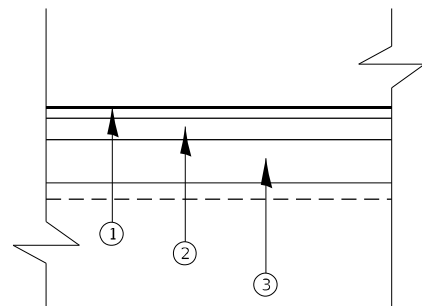
EXISTING TYPICAL SECTION NO. 1  
STA. 10+12 TO STA. 11+73

**LEGEND - EXISTING:**

- Ⓐ EXISTING HMA SURFACE COURSE, ±4.5"
- Ⓑ EXISTING CRUSHED STONE, ±8"

**LEGEND - PROPOSED**

- ① PROPOSED HOT-MIX ASPHALT SURFACE COURSE, MIX "D", N70, IL 9.5, 1-1/2"
- ② PROPOSED HOT-MIX ASPHALT BINDER COURSE, IL-19.0, N70, 3"
- ③ PROPOSED SUBBASE GRANULAR MATERIAL, TYPE B, 6"



PROPOSED TYPICAL SECTION NO. 1  
STA. 10+12 TO STA. 11+73

HOT-MIX ASPHALT MIXTURE REQUIREMENTS		QUALITY MANAGEMENT PROGRAM (QMP)
MIXTURE TYPE	AIR VOIDS @ Ndes	
<b>PAVEMENT RECONSTRUCTION</b>		
HOT-MIX ASPHALT SURFACE COURSE, MIX "D", IL-9.5, N70, 1-1/2"	4% AT 70 GYR.	QC/QA
HOT-MIX ASPHALT BINDER COURSE, IL-19.0, N70, 3"	4% AT 70 GYR.	QC/QA
QMP DESIGNATION: QUALITY CONTROL/QUALITY ASSURANCE (QC/QA); QUALITY CONTROL FOR PERFORMANCE (QCP)		

NOTE 1: THE UNIT WEIGHT USED TO CALCULATE ALL HMA SURFACE MIXTURE QUANTITIES IS 112 LBS/SQ YD/IN.

NOTE 2: THE "AC TYPE" FOR POLYMERIZED HMA MIXES SHALL BE "SBS/SBR PG 76-22" AND FOR NON-POLYMERIZED HMA THE "AC TYPE" SHALL BE "PG 64-22" UNLESS MODIFIED BY RECLAIMED MATERIAL SPECIFICATIONS.

MODEL: Default  
 FILE NAME: p:\project\paw\_bentley.com\pww\DOT\Documents\DOT Office\Dir\drt. 1\Project\107419\CADD\data\Design\107419-shr-1-bn.dgn

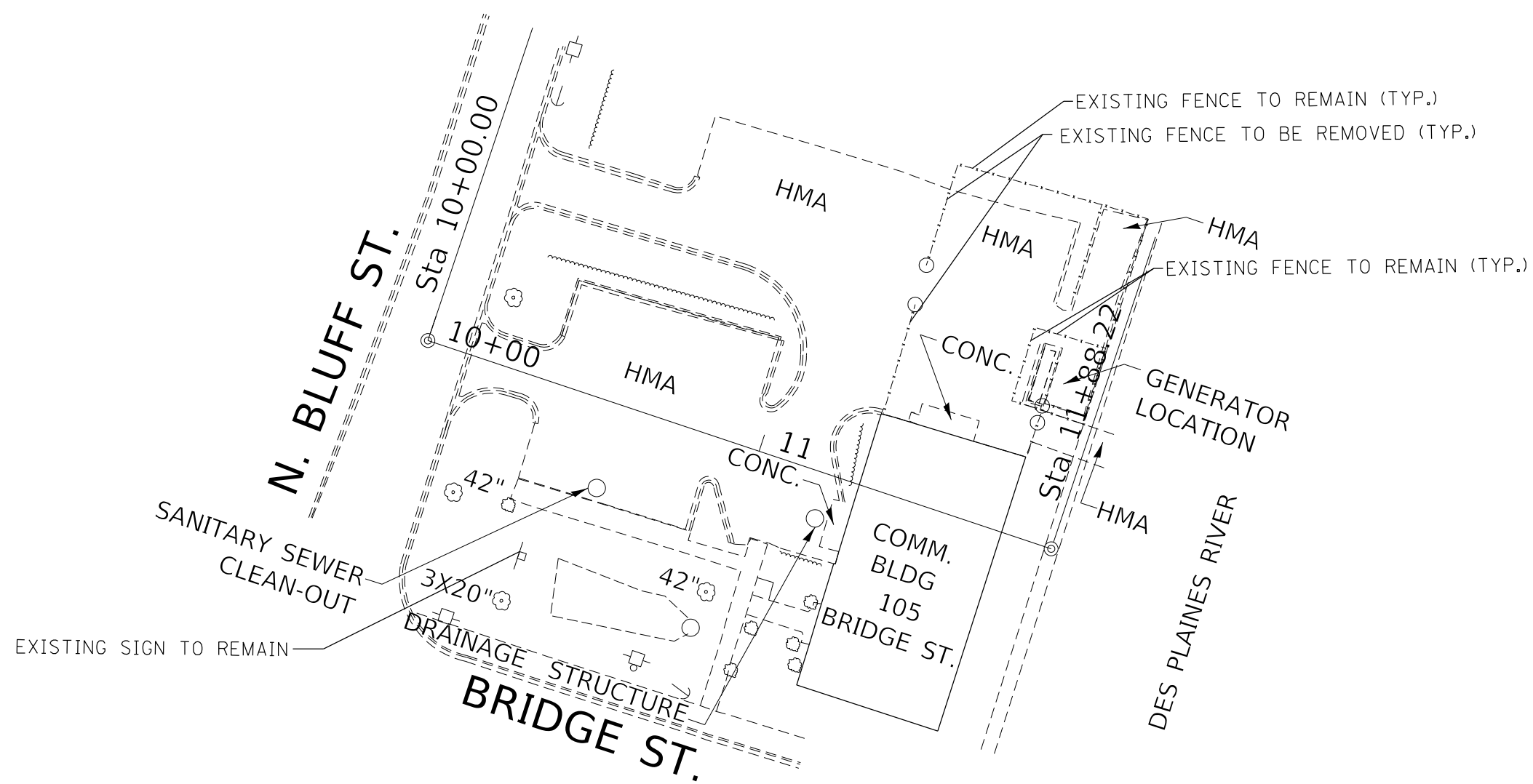
USER NAME = yaseen.ureshi	DESIGNED -	REVISED -
	DRAWN -	REVISED -
PLOT SCALE = 40,0000 * / in.	CHECKED -	REVISED -
PLOT DATE = 10/26/2023	DATE -	REVISED -

**STATE OF ILLINOIS  
DEPARTMENT OF TRANSPORTATION**

**MOVABLE BRIDGE MAINTENANCE YARD  
TYPICAL SECTIONS**

SCALE: SHEET OF SHEETS STA. TO STA.

F.A.U. RTE.	SECTION	COUNTY	TOTAL SHEETS	SHEET NO.
297A	2018-118-RS	WILL	13	5
CONTRACT NO. 62H58				
ILLINOIS		FED. AID PROJECT		



MODEL: Default  
 FILE NAME: p:\project-pw-bentley.com\pwworkspace\dot\documents\dot\office\dot\project\1\project\1\07419\CADD\data\Design\107419-ah-1-bn.dgn

USER NAME = yaseen.queshi	DESIGNED -	REVISED -
PLOT SCALE = 40,0000 * / in.	DRAWN -	REVISED -
PLOT DATE = 10/26/2023	CHECKED -	REVISED -
	DATE -	REVISED -

**STATE OF ILLINOIS**  
**DEPARTMENT OF TRANSPORTATION**

**MOVABLE BRIDGE MAINTENANCE YARD**  
**EXISTING SITE PLAN**

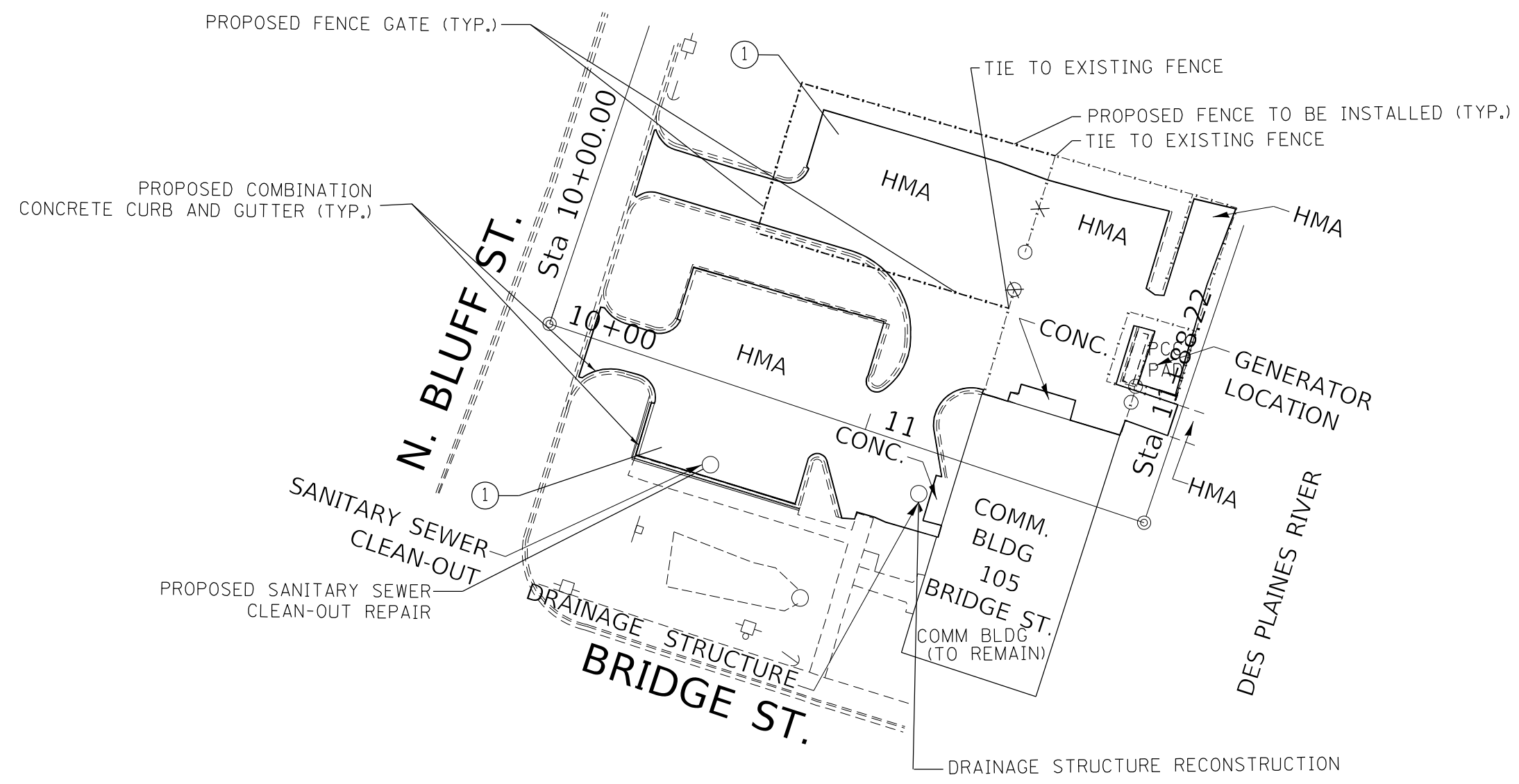
SCALE: SHEET OF SHEETS STA. TO STA.

F.A.U. RTE.	SECTION	COUNTY	TOTAL SHEETS	SHEET NO.
297A	2018-118-R5	WILL	13	6
ILLINOIS FED. AID PROJECT			CONTRACT NO. 62H58	



**NOTES:**

1. CONTRACTOR SHALL INSTALL "TRUCKS ENTERING AND LEAVING HIGHWAY" SIGNS, W21-I105 (MODIFIED) IN EACH DIRECTION ON BLUFF STREET APPROACHING MAINTENANCE YARD ENTRANCE. THESE SIGNS SHALL BE PAID AS "TEMPORARY INFORMATION SIGNING".
2. THE CONTRACTOR'S VEHICLES, EQUIPMENT, AND OPERATIONS MAY NOT ENCROACH UPON BLUFF STREET'S TRAVELED WAY AT ANY TIME.



- ① PROPOSED PAVEMENT REMOVAL, 4-1/2"
- PROPOSED EARTH EXCAVATION, 6"
- PROPOSED HMA SURFACE, IL-9.5, MIX "D", N70, 1.5"
- PROPOSED HMA BINDER COURSE, IL-19.0, N70, 3"
- PROPOSED SUBBASE GRANULAR MATERIAL, TYPE B, 6"

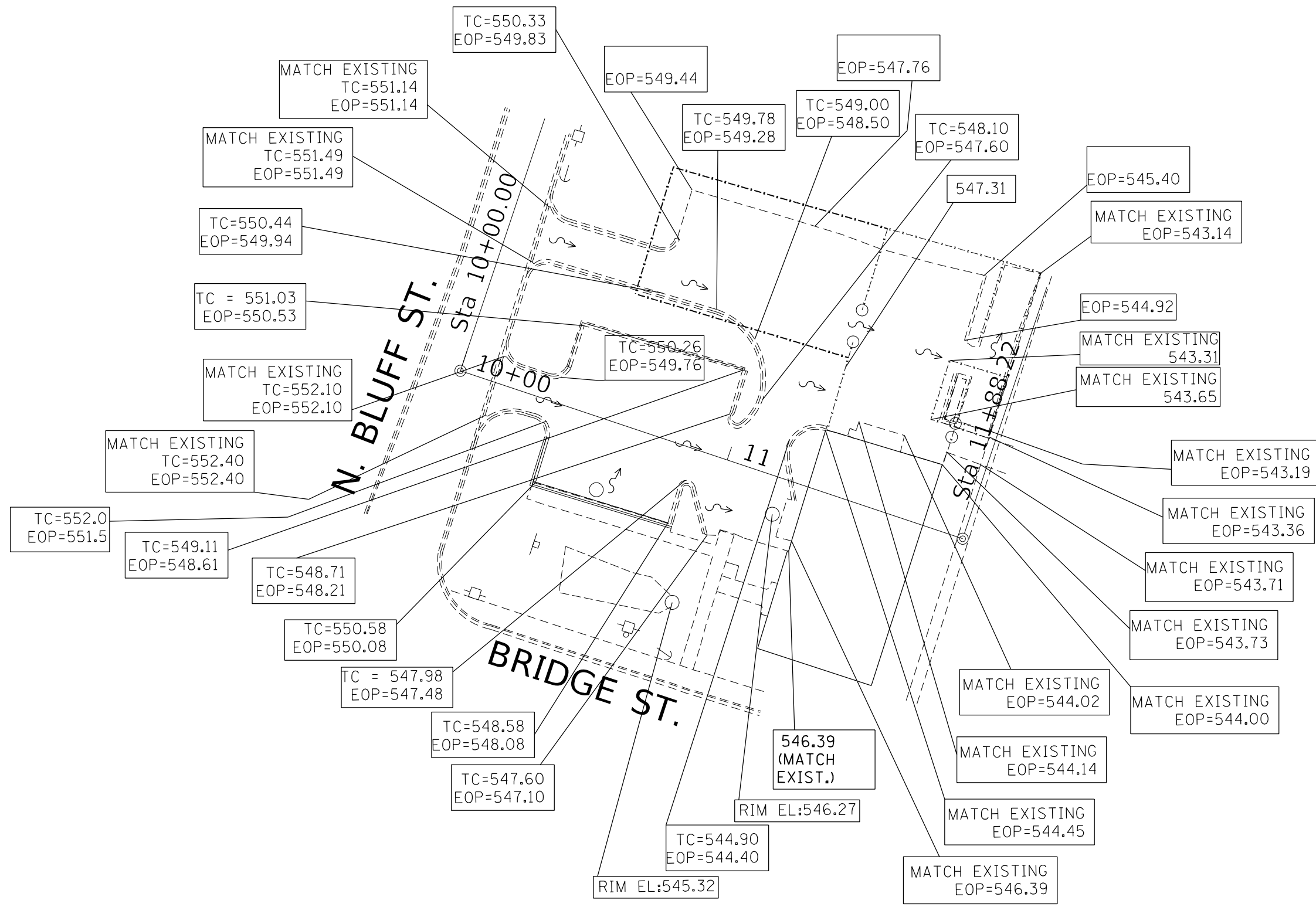
MODEL: Default  
 FILE NAME: p:\bluff-stw-beadley.com\PIV\DOT\Documents\DOT Office\Drawings\1\Project\107419\CADD\data\Design\107419-bluff-stw-beadley.com

USER NAME = yaseen.queeshi	DESIGNED -	REVISED -
	DRAWN -	REVISED -
PLOT SCALE = 40,0000 */ in.	CHECKED -	REVISED -
PLOT DATE = 10/26/2023	DATE -	REVISED -

**STATE OF ILLINOIS  
DEPARTMENT OF TRANSPORTATION**

MOVABLE BRIDGE MAINTENANCE YARD PROPOSED SITE PLAN				
SCALE:	SHEET	OF	SHEETS	STA. TO STA.

F.A.U. RTE.	SECTION	COUNTY	TOTAL SHEETS	SHEET NO.
297A	2018-118-R5	WILL	13	7
CONTRACT NO. 62H58			ILLINOIS FED. AID PROJECT	



MODEL: Default  
 FILE: N:\MIFC\_Plan\Subsect-pw-beadley.com\FW\DOT\Documents\DOT Office\Dir\rdet\_1\Project\107419\CADD\data\Design\107419-Sub-Plan.dwg

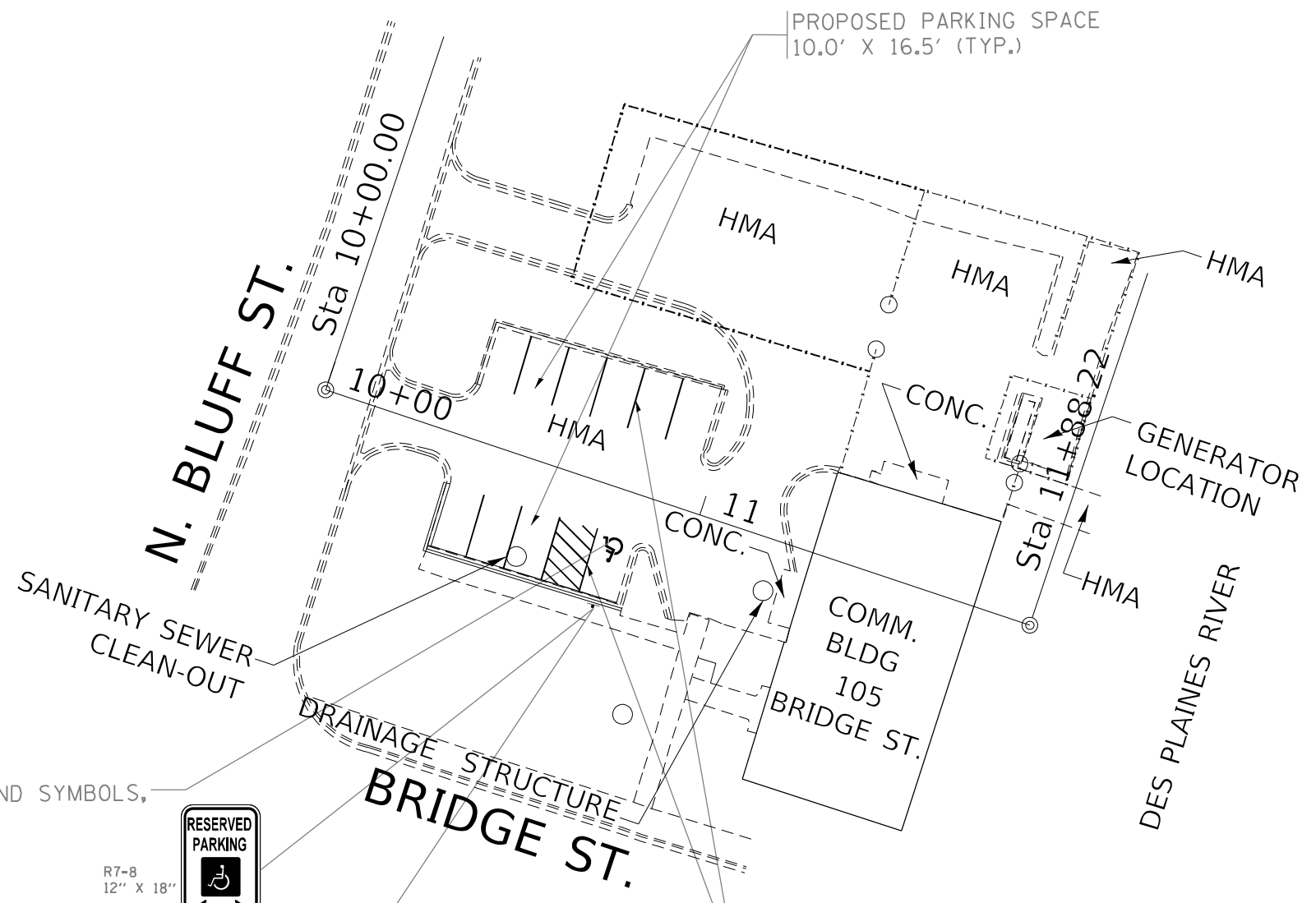
USER NAME = yaseen.ureshi	DESIGNED -	REVISED -
DRAWN -	REVISED -	
PLOT SCALE = 40,0000 * / in.	CHECKED -	REVISED -
PLOT DATE = 11/29/2023	DATE -	REVISED -

**STATE OF ILLINOIS**  
**DEPARTMENT OF TRANSPORTATION**

<b>MOVABLE BRIDGE MAINTENANCE YARD</b>			
<b>PROPOSED SITE GRADING PLAN</b>			
SCALE:	SHEET	OF	SHEETS
	STA.	TO	STA.

F.A.U. RTE.	SECTION	COUNTY	TOTAL SHEETS	SHEET NO.
297A	2018-118-RS	WILL	13	8
			CONTRACT NO. 62H58	
ILLINOIS FED. AID PROJECT				





PROPOSED THERMOPLASTIC PAVEMENT MARKING LETTERS AND SYMBOLS, HANDICAP SYMBOL, BLUE AND WHITE (TYP.)



R7-8  
12" X 18"



R7-1101  
12" X 6"

PROPOSED SIGN  
PANEL - TYPE 1  
PROPOSED  
METAL POST -  
TYPE A

PROPOSED THERMOPLASTIC PAVEMENT MARKING,  
4" SOLID WHITE LINE (TYP.)

MODEL: Default  
 FILE NAME: p:\project\paw\_bentley.com\P\INDOT\Documents\DOT\_Offices\Dir\dct\_1\Project\107419\CADD\data\Design\107419\_sht-9a.dwg

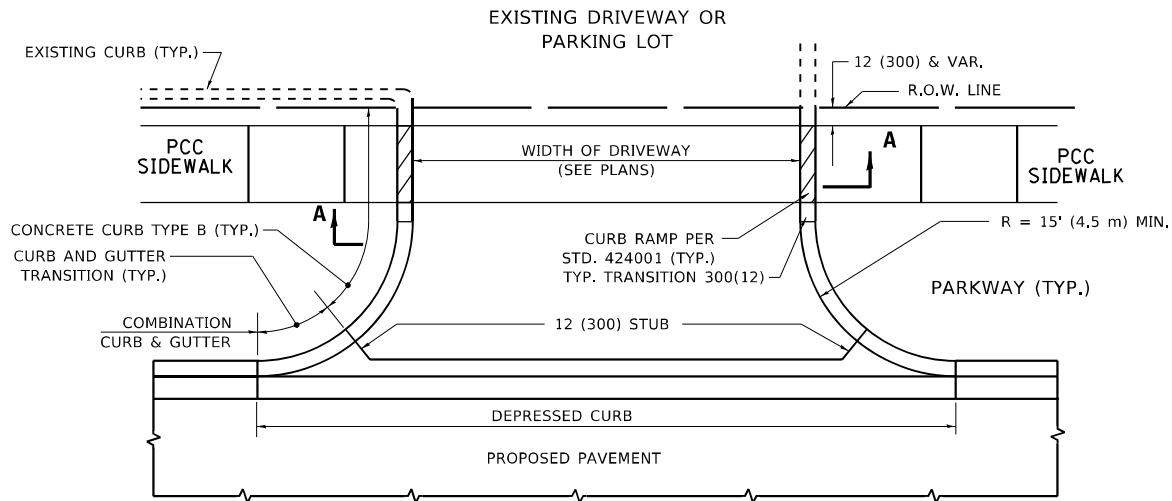
USER NAME = yaseen.ureshi	DESIGNED -	REVISED -
	DRAWN -	REVISED -
PLOT SCALE = 40,0000 * / in.	CHECKED -	REVISED -
PLOT DATE = 10/26/2023	DATE -	REVISED -

**STATE OF ILLINOIS  
DEPARTMENT OF TRANSPORTATION**

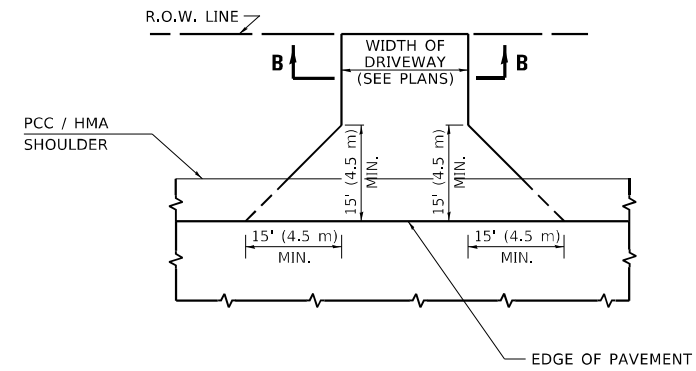
**MOVABLE BRIDGE MAINTENANCE YARD  
PAVEMENT MARKING PLAN**

SCALE: SHEET OF SHEETS STA. TO STA.

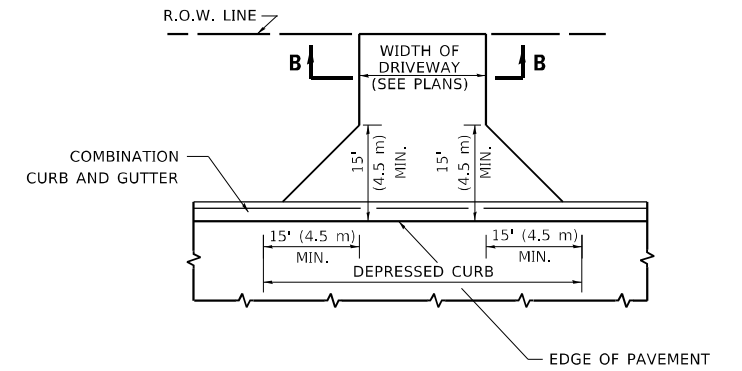
F.A.U. RTE.	SECTION	COUNTY	TOTAL SHEETS	SHEET NO.
297A	2018-118-R5	WILL	13	9
ILLINOIS FED. AID PROJECT			CONTRACT NO. 62H58	



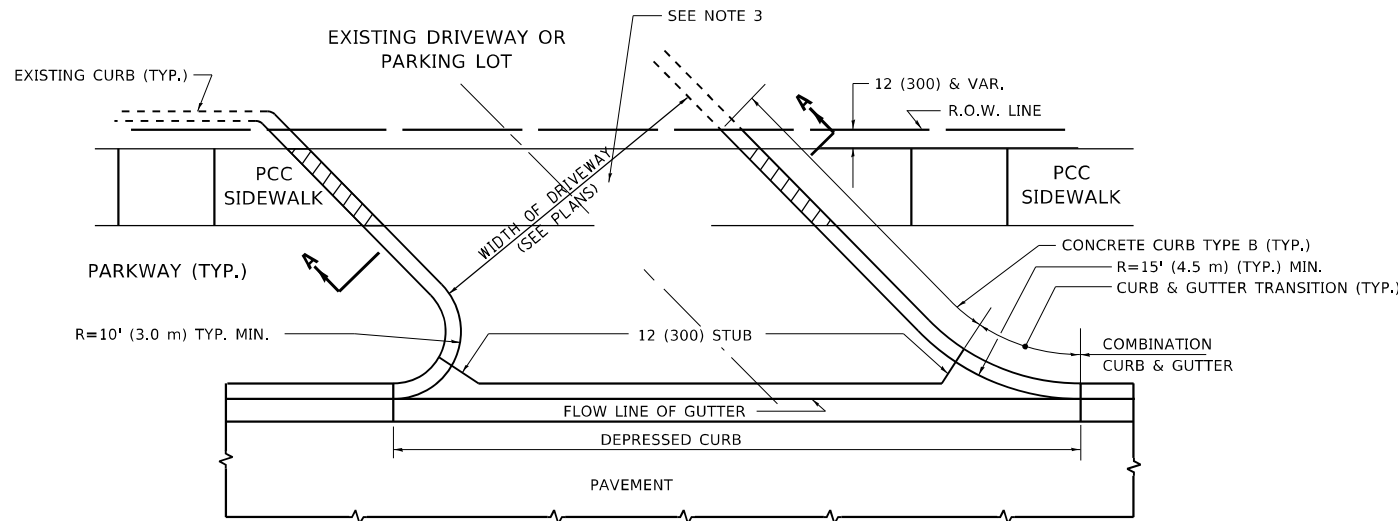
**WITH CONCRETE CURB, TYPE B**



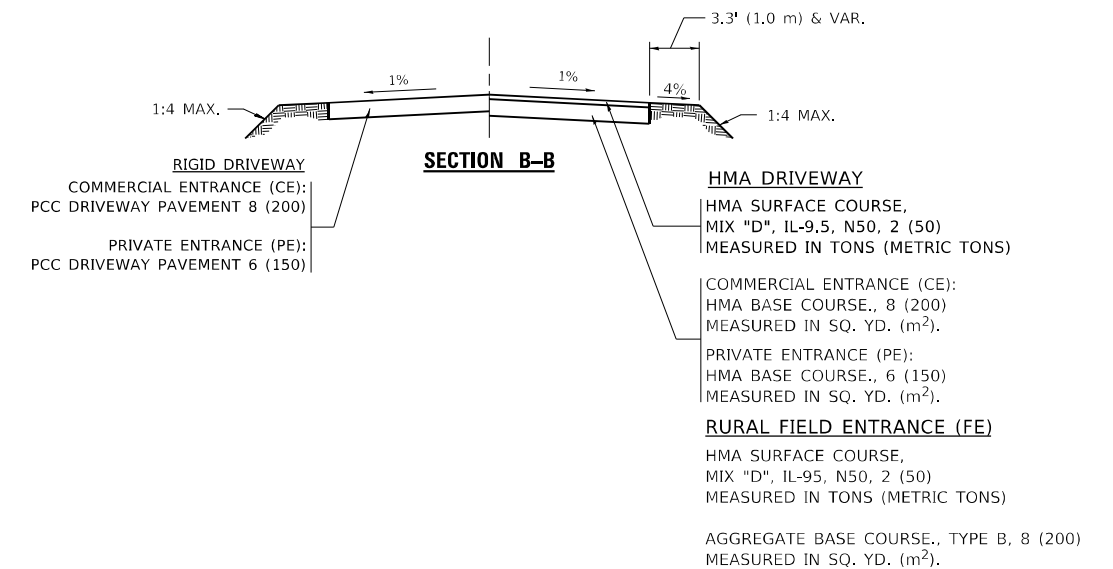
**ADJACENT TO PCC /HMA SHOULDER**



**ADJACENT TO CURB AND GUTTER**



**WITH CONCRETE CURB, TYPE B**



**SECTION B-B**

**RIGID DRIVEWAY**  
 COMMERCIAL ENTRANCE (CE):  
 PCC DRIVEWAY PAVEMENT 8 (200)  
 MEASURED IN SQ. YD. (m<sup>2</sup>)  
 PRIVATE ENTRANCE (PE):  
 PCC DRIVEWAY PAVEMENT 6 (150)  
 MEASURED IN SQ. YD. (m<sup>2</sup>)

**SECTION A-A**

**HMA DRIVEWAY**  
 HMA SURFACE COURSE,  
 MIX "D", IL-9.5, N50, 2 (50)  
 MEASURED IN TONS (METRIC TONS)  
 COMMERCIAL ENTRANCE (CE):  
 HMA BASE COURSE, 8 (200)  
 MEASURED IN SQ. YD. (m<sup>2</sup>).  
 PRIVATE ENTRANCE (PE):  
 HMA BASE COURSE, 6 (150)  
 MEASURED IN SQ. YD. (m<sup>2</sup>).

**GENERAL NOTES**

- DRIVEWAY SLOPES, LOCATIONS, & GEOMETRIC LAYOUT SHALL BE IN ACCORDANCE WITH THE LATEST EDITION OF THE "HANDBOOK FOR POLICY ON PERMITS FOR ACCESS DRIVEWAYS TO STATE HIGHWAYS". FOR FURTHER LAYOUT REQUIREMENTS, REFER TO ILLUSTRATIONS IN THE PERMIT HANDBOOK. DRIVEWAYS SHALL BE REPLACED IN KIND, UNLESS OTHERWISE NOTED ON THE PLANS.
- COMMERCIAL DRIVEWAYS SHALL BE CONSTRUCTED WITH CONCRETE CURB, TYPE B RETURNS EXCEPT WHEN THE SIDEWALK EDGE IS 4 FEET (1.2 METERS) OR LESS FROM THE BACK OF CURB, CONSTRUCT A FLARE DRIVEWAY WITHOUT CURB.

ALL DIMENSIONS ARE IN INCHES (MILLIMETERS) UNLESS OTHERWISE NOTED.

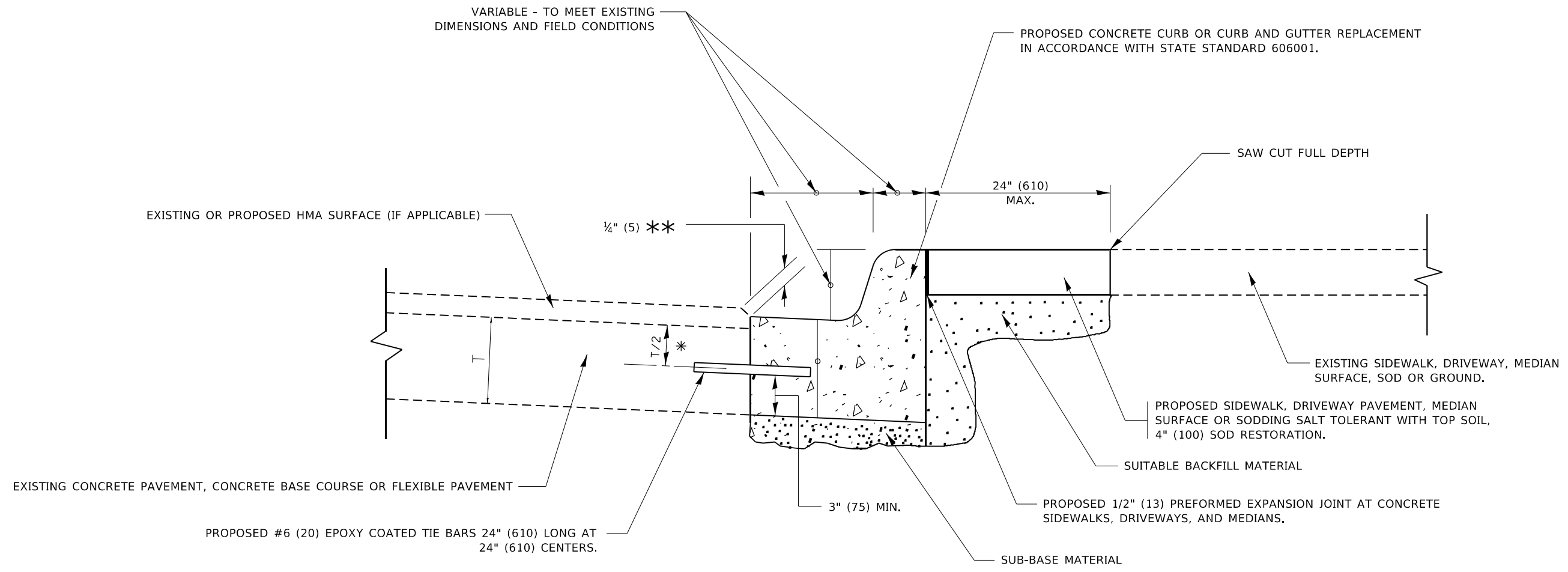
MODEL: Default  
 FILE NAME: p:\projects\paw\benefit\com\paw\DOT\Documents\DOT Office\Drawings\11\Project\11074191\CADD\data\Design\DrivStk.dgn

USER NAME = yaseen.ureshi	DESIGNED - R. SHAH	REVISED - R. BORO 06-11-08
PLOT SCALE = 100,0000' / in.	CHECKED -	REVISED - R. BORO 09-06-11
PLOT DATE = 10/26/2023	DATE - 11-04-95	REVISED - K. SMITH 08-28-19
		REVISED - K. SMITH 11-18-22

**STATE OF ILLINOIS  
 DEPARTMENT OF TRANSPORTATION**

<b>DRIVEWAY DETAILS - DISTANCE BETWEEN R.O.W. AND FACE OF CURB &amp; EDGE OF SHOULDER ≥ 15'(4.5m)</b>			
SCALE: NONE	SHEET 1	OF 1 SHEETS	STA. TO STA.

F.A.U. RTE.	SECTION	COUNTY	TOTAL SHEETS	SHEET NO.
297A	2018-118-R5	WILL	13	10
<b>BD400-01 (BD-01)</b>			CONTRACT NO. 62H58	
ILLINOIS FED. AID PROJECT				



- \* 3" (75) MINIMUM FROM TOP AND BOTTOM OF THE CONCRETE PAVEMENT OR BASE COURSE.
- \*\* IF THE FINAL SURFACE OF THE PAVEMENT IS CONCRETE, THE GUTTER IS TO BE FLUSH WITH THE PAVEMENT.

# CURB OR CURB AND GUTTER REMOVAL AND REPLACEMENT

ALL DIMENSIONS ARE IN INCHES (MILLIMETERS) UNLESS OTHERWISE SHOWN.

MODEL: Default  
FILE NAME: p:\ultra-cw-beachy.com\PIV\DOT\Documents\DOT Office\Dir\dtdt\_1\Project\107419\CADD\data\Design\Bd6001.dgn

USER NAME = yaseen.ureshi	DESIGNED - A. HOUSEH	REVISED - A. ABBAS 03-21-97
	DRAWN -	REVISED - M. GOMEZ 01-22-01
PLOT SCALE = 100,0000 ' / in.	CHECKED -	REVISED - R. BORO 12-15-09
PLOT DATE = 10/26/2023	DATE - 03-11-94	REVISED - K. SMITH 07-11-19

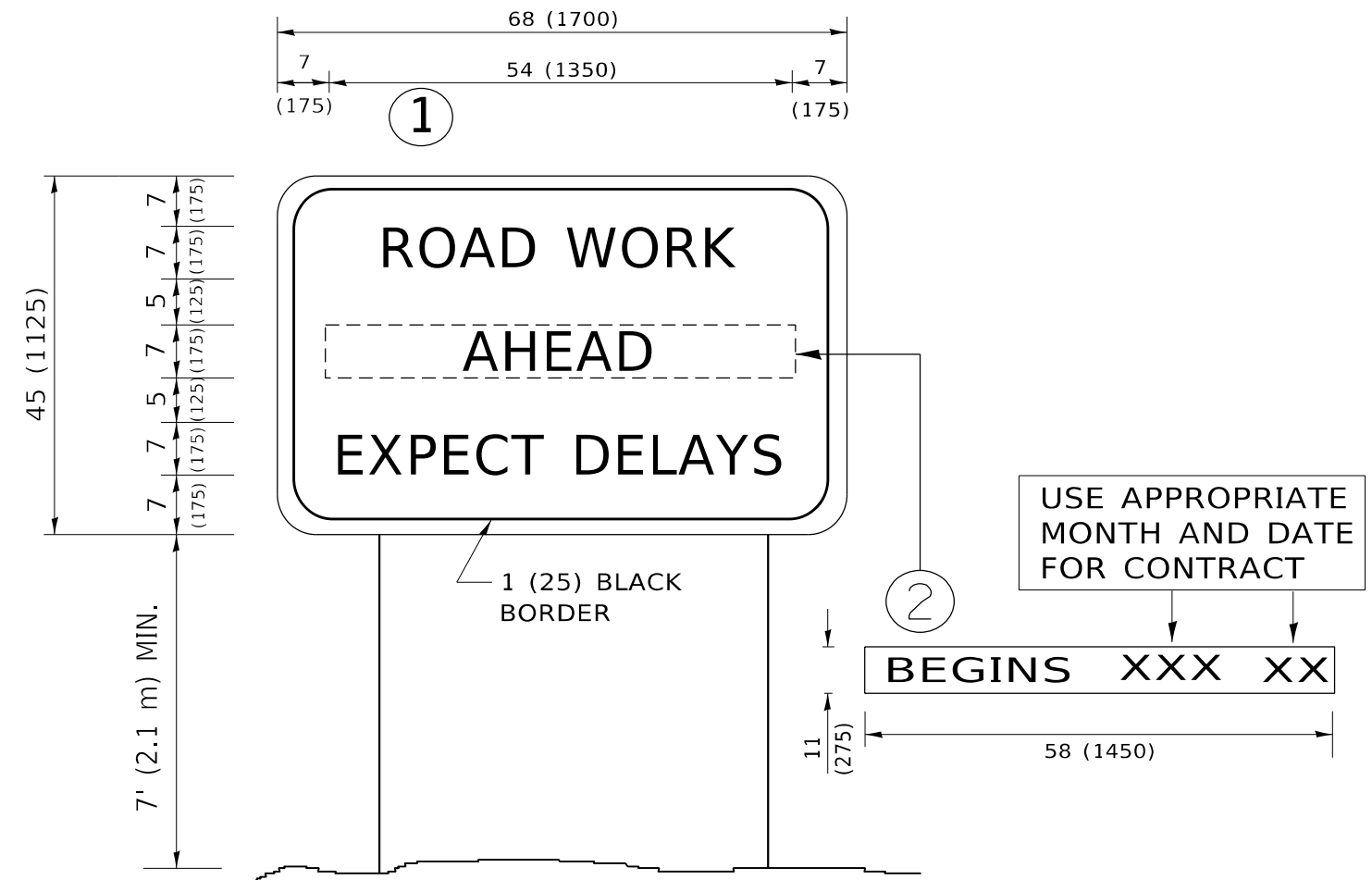
**STATE OF ILLINOIS  
DEPARTMENT OF TRANSPORTATION**

**CURB OR CURB AND GUTTER  
REMOVAL AND REPLACEMENT**

SCALE: NONE    SHEET 1 OF 1 SHEETS    STA.    TO STA.

F.A.U. RTE.	SECTION	COUNTY	TOTAL SHEETS	SHEET NO.
297A	2018-118-R5	WILL	13	11
<b>BD600-06 (BD-24)</b>		CONTRACT NO. 62H58		
ILLINOIS FED. AID PROJECT				





**NOTES:**

1. USE BLACK LETTERING ON ORANGE BACKGROUND.
2. ERECT SIGNS IN ADVANCE OF THE LOCATION FOR THE "ROAD CONSTRUCTION AHEAD" SIGN AT LOCATIONS AS DIRECTED BY THE ENGINEER.
3. ERECT SIGN ① WITH INSTALLED PANEL ② ONE WEEK PRIOR TO THE START OF CONSTRUCTION.
4. REMOVE PANEL ② SOON AFTER THE START OF CONSTRUCTION.
5. SEE SPECIAL PROVISION FOR "TEMPORARY INFORMATION SIGNING" FOR ADDITIONAL INFORMATION.
6. ONE SIGN ASSEMBLY EQUALS 25.70 SQ. FT. (2.3 SQ. M.)
7. SHALL BE PAID FOR AS TEMPORARY INFORMATION SIGNING.

ALL DIMENSIONS ARE IN INCHES (MILLIMETERS) UNLESS OTHERWISE SHOWN.

MODEL: Default  
 FILE NAME: p:\project-aw-beadley.com\p\INDOT\Documents\DOT Office\District 11\Project\1107419\CADD\data\Design\BdEst.dgn

USER NAME = yaseen.queshi	DESIGNED -	REVISED - R. MIRS 09-15-97
	DRAWN -	REVISED - R. MIRS 12-11-97
PLOT SCALE = 100,0000 ' / in.	CHECKED -	REVISED - T. RAMMACHER 02-02-99
PLOT DATE = 10/26/2023	DATE -	REVISED - C. JUCIUS 01-31-07

**STATE OF ILLINOIS  
DEPARTMENT OF TRANSPORTATION**

**ARTERIAL ROAD  
INFORMATION SIGN**

SCALE: NONE SHEET 1 OF 1 SHEETS STA. TO STA.

F.A.U. RTE.	SECTION	COUNTY	TOTAL SHEETS	SHEET NO.
297A	2018-118-R5	WILL	13	13
<b>TC-22</b>			CONTRACT NO. 62H58	
ILLINOIS FED. AID PROJECT				