

STATE OF ILLINOIS  
DEPARTMENT OF TRANSPORTATION

F.A.P. RTE.	SECTION	COUNTY	TOTAL SHEETS	SHEET NO.
368	FAP 0368 22 RS	COOK	53	1
		ILLINOIS	CONTRACT NO. 62T87	

\* 53 + 2 = 55 TOTAL SHEETS

FOR INDEX OF SHEETS, SEE SHEET NO. 2

THIS PROJECT IS LOCATED IN CITIES OF HOMETOWN AND CHICAGO, AND THE VILLAGES OF EVERGREEN PARK AND OAKLAWN

PROPOSED  
HIGHWAY PLANS

FAP ROUTE 368: PULASKI ROAD  
COLUMBUS AVE TO US 12 (95TH STREET)  
SECTION: FAP 0368 22 RS  
PROJECT: NHPP-4STD(087)  
SMART OVERLAY, ADA IMPROVEMENTS  
COOK COUNTY

TRAFFIC DATA:

PULASKI ROAD (OTHER PRINCIPLE ARTERIAL):

COLUMBUS AVE TO 87TH ST:  
ADT (2022) = 19,900  
SPEED LIMIT = 30 MPH

87TH ST TO 93RD ST:  
ADT (2022) = 20,700  
SPEED LIMIT = 40 MPH

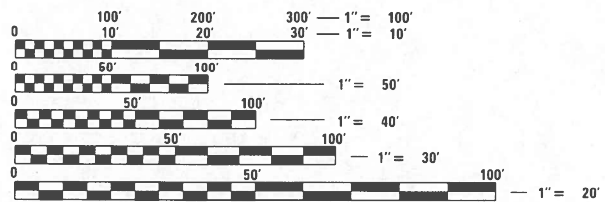
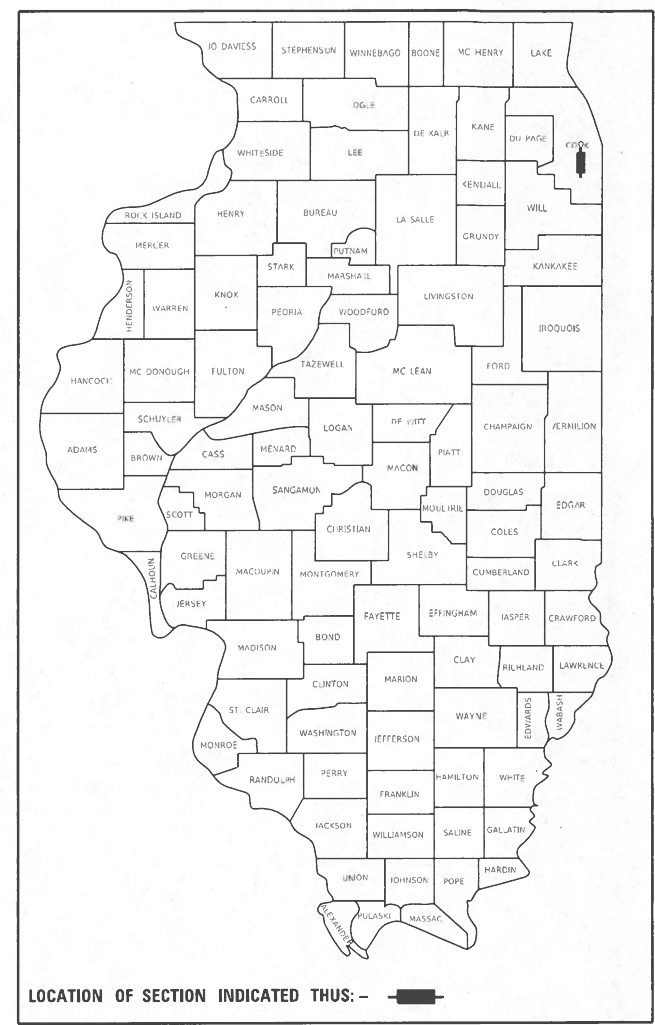
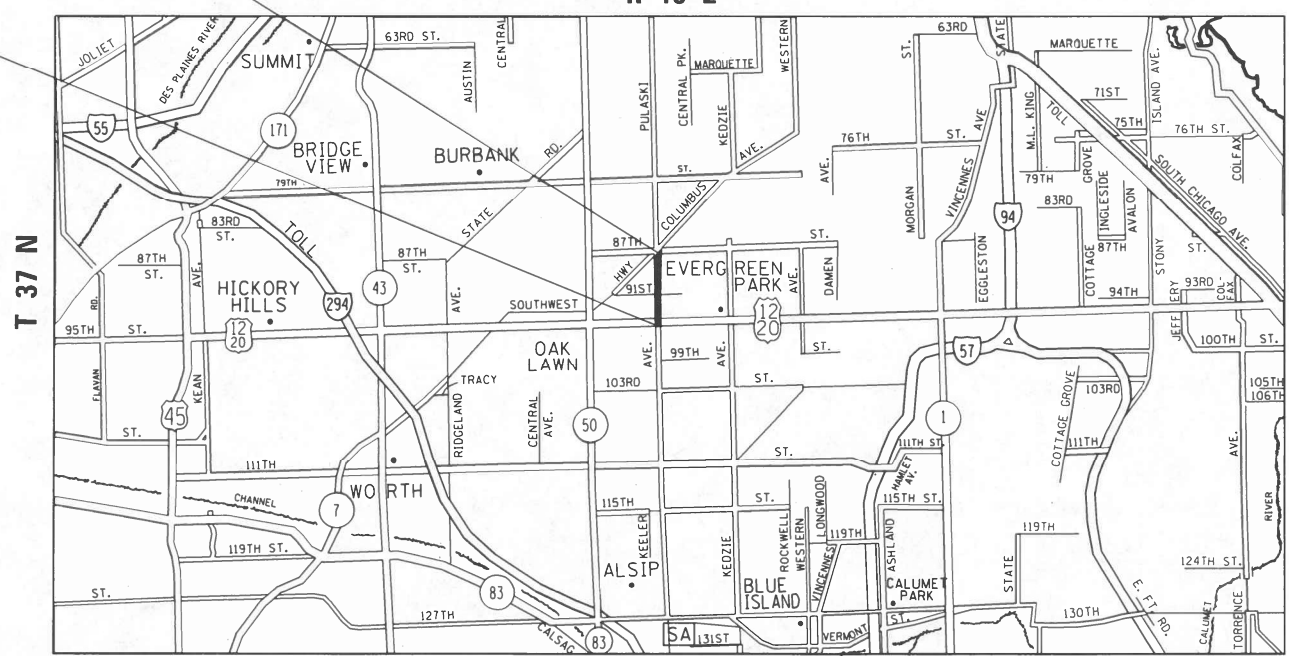
93RD ST TO 95TH ST:  
ADT (2022) = 20,700  
SPEED LIMIT = 35 MPH

PROJECT ENDS  
STA. 68 + 81

PROJECT BEGINS  
STA. 14 + 45

C-91-322-22

R 13 E



FULL SIZE PLANS HAVE BEEN PREPARED USING STANDARD ENGINEERING SCALES. REDUCED SIZED PLANS WILL NOT CONFORM TO STANDARD SCALES. IN MAKING MEASUREMENTS ON REDUCED PLANS, THE ABOVE SCALES MAY BE USED.

J.U.L.I.E.  
JOINT UTILITY LOCATION INFORMATION FOR EXCAVATORS  
1-800-892-0123  
OR 811

PROJECT ENGINEER: VESELIN VELICHKOV (847) 705-4432  
PROJECT MANAGER: FAWAD AQUEEL

GROSS LENGTH = NET LENGTH = 5,436 FT. = 1.030 MILES

CONTRACT NO. 62T87



STATE OF ILLINOIS  
DEPARTMENT OF TRANSPORTATION

SUBMITTED October 13, 2023

[Signature]  
REGIONAL ENGINEER

December 8, 2023

[Signature]  
ENGINEER OF DESIGN AND ENVIRONMENT

December 8, 2023

[Signature]  
DIRECTOR OF HIGHWAYS PROJECT IMPLEMENTATION

PRINTED BY THE AUTHORITY  
OF THE STATE OF ILLINOIS

**INDEX OF SHEETS**

SHEET NO.	DESCRIPTION
1	COVER SHEET
2-3	INDEX OF SHEETS, STATE STANDARDS, AND GENERAL NOTES
4-7	SUMMARY OF QUANTITIES
8-9	TYPICAL SECTIONS
10	SCHEDULE OF QUANTITIES - ADA IMPROVEMENT
11-13	ROADWAY AND PAVEMENT MARKING PLANS
14-24	CURB RAMPS IMPROVEMENT PLANS
25-31	STANDARD TRAFFIC SIGNAL DESIGN DETAILS (TS-05)
32	MAST ARM MOUNTED STREET NAME SIGNS (TS-02)
33-36	TRAFFIC SIGNAL PLANS
37	DRIVEWAY DETAILS - DISTANCE BETWEEN ROW AND FACE OF CURB AND EDGE OF SHOULDER GREATER THAN OR EQUAL TO 15' (BD-01)
38	DRIVEWAY DETAILS - DISTANCE BETWEEN ROW AND FACE OF CURB IS LESS THAN 15' (BD-02)
39	DETAILS FOR FRAMES AND LIDS ADJUSTMENT WITH MILLING (BD-08)
40	PAVEMENT PATCHING FOR HMA SURFACED PAVEMENT (BD-22)
41	CURB OR CURB AND GUTTER REMOVAL AND REPLACEMENT (BD-24)
42	BUTT JOINTS AND HMA TAPER (BD-32)
43	TRAFFIC CONTROL AND PROTECTION FOR SIDE ROADS, INTERSECTIONS, AND DRIVEWAYS (TC-10)
44	TYPICAL APPLICATIONS RAISED REFLECTIVE PAVEMENT MARKERS (SNOW-PLOW RESISTANT) (TC-11)
45	DISTRICT ONE TYPICAL PAVEMENT MARKINGS (TC-13)
46	TRAFFIC CONTROL AND PROTECTION AT TURN BAYS (TO REMAIN OPEN TO TRAFFIC) (TC-14)
47	SHORT-TERM PAVEMENT MARKING LETTERS AND SYMBOLS (TC-16)
48	ARTERIAL ROAD INFORMATION SIGN (TC-22)
49-50	TYPICAL SUPPLEMENTAL SIGNING AND PAVEMENT MARKING TREATMENT FOR RAILROAD CROSSING (TC-23)
51	DRIVEWAY ENTRANCE SIGNING (TC-26)
52	DISTRICT 1 - DETECTOR LOOP INSTALLATION DETAILS FOR ROADWAY RESURFACING (TS-07)
53	CRACK & JOINT SEALING DETAIL (PD-11)
53 A	PROJECT DETAIL FOR SINGLE PERPENDICULAR CURB RAMPS (PD-01)
53 B	PROJECT DETAIL FOR SINGLE PERPENDICULAR CURB RAMPS WITH TURNING SPACE (PD-04)

**STATE STANDARDS**

STANDARD NO.	DESCRIPTION
000001-08	STANDARD SYMBOLS, ABBREVIATIONS AND PATTERNS
424001-11	PERPENDICULAR CURB RAMPS FOR SIDEWALK
424011-04	CORNER PARALLEL CURB RAMPS FOR SIDEWALK
424026-03	ENTRANCE / ALLEY PEDESTRIAN CROSSINGS
442201-03	CLASS C AND D PATCHES
602001-02	CATCH BASIN TYPE A
604001-05	FRAME AND LIDS, TYPE 1
606001-08	CONCRETE CURB TYPE B AND COMBINATION CONCRETE CURB AND GUTTER
701101-05	OFF-ROAD OPERATIONS, MULTILANE, 15' (4.5 M) TO 24" (600 MM) FROM PAVEMENT EDGE
701427-05	LANE CLOSURE, MULTILANE, INTERMITTENT OR MOVING OPERATION, FOR SPEEDS ≤ 40 MPH
701601-09	URBAN LANE CLOSURE, MULTILANE, 1W OR 2W WITH NONTRAVERSABLE MEDIAN
701602-10	URBAN LANE CLOSURE, MULTILANE, 2W WITH BIDIRECTIONAL LEFT TURN LANE
701606-10	URBAN SINGLE LANE CLOSURE, MULTILANE, 2W WITH MOUNTABLE MEDIAN
701701-10	URBAN LANE CLOSURE, MULTILANE INTERSECTION
701801-06	SIDEWALK, CORNER OR CROSSWALK CLOSURE
701901-09-09	TRAFFIC CONTROL DEVICES
780001-05	TYPICAL PAVEMENT MARKINGS
781001-04	TYPICAL APPLICATIONS RAISED REFLECTIVE PAVEMENT MARKERS
814001-03	HANDHOLES
857001-01	STANDARD PHASE DESIGNATION DIAGRAMS AND PHASE SEQUENCES
873001-02	TRAFFIC SIGNAL GROUNDING & BONDING
878001-11	CONCRETE FOUNDATION DETAILS
880006-01	TRAFFIC SIGNAL MOUNTING DETAILS
886001-01	DETECTOR LOOP INSTALLATIONS
886006-01	TYPICAL LAYOUT FOR DETECTION LOOPS
701502-09	URBAN LANE CLOSURE, 2L, 2W, WITH BIDIRECTIONAL LEFT TURN LANE

**GENERAL NOTES**

- BEFORE STARTING ANY EXCAVATION, THE CONTRACTOR SHALL CALL "JULIE" AT 800-892-0123 FOR FIELD LOCATIONS OF BURIED ELECTRIC, TELEPHONE AND GAS FACILITIES (48 HOURS NOTIFICATION REQUIRED).
- THE CONTRACTOR SHALL COORDINATE CONSTRUCTION ACTIVITIES WITH THE UTILITY COMPANIES, CITY OF HOMETOWN, CITY OF CHICAGO, VILLAGE OF EVERGREEN PARK, AND VILLAGE OF OAKLAWN.
- THE CONTRACTOR WILL NOT BE ALLOWED TO SET UP A YARD OR FIELD OFFICE ON STATE PROPERTY WITHOUT WRITTEN PERMISSIONS FROM THE DEPARTMENT.
- BEFORE BEGINNING ANY WORK, THE CONTRACTOR SHALL RETAIN AND RECORD FOR FUTURE REFERENCE, ALL EXISTING PAVEMENT MARKING LINES (AND RAISED REFLECTIVE MARKERS) IN ORDER THAT THESE LOCATIONS CAN BE RE-ESTABLISHED FOR STRIPING. EXACT LOCATIONS OF ALL PAVEMENT MARKINGS SHALL BE AS SHOWN ON THE PLANS OR AS DIRECTED BY THE ENGINEER.
- IT SHALL BE THE CONTRACTOR'S RESPONSIBILITY TO VERIFY ALL DIMENSIONS AND CONDITIONS EXISTING IN THE FIELD PRIOR TO ORDERING MATERIALS AND BEGINNING CONSTRUCTION.
- THE CONTRACTOR SHALL CONTACT THE DISTRICT ONE TRAFFIC CONTROL SUPERVISOR AT KALPANA.KANNAN-HOSADURGA@ILLINOIS.GOV A MINIMUM OF 72 HOURS IN ADVANCE OF BEGINNING WORK.
- THE RESIDENT ENGINEER SHALL CONTACT THE DISTRICT ONE TRAFFIC CONTROL SUPERVISOR AT KALPANA.KANNAN-HOSADURGA@ILLINOIS.GOV A MINIMUM OF 2 WEEKS PRIOR TO PLACEMENT OF PERMANENT PAVEMENT MARKING.
- IT IS THE CONTRACTOR'S RESPONSIBILITY TO PROVIDE A FIELD LABORATORY FOR USE FOR ANY ON-SITE TESTING BY THE ENVIRONMENTAL FIRM. NO TESTING OF ANY KIND, CONTAMINATED OR NON-CONTAMINATED, FLUID OR SOLID SHALL BE PERMITTED IN THE ENGINEER'S FIELD OFFICE.
- THE CONTRACTOR SHALL BE REQUIRED TO PROVIDE ACCESS TO ABUTTING PROPERTY AT ALL TIMES DURING THE CONSTRUCTION OF THIS PROJECT.
- ANY PAVEMENT MARKINGS AND RAISED REFLECTIVE PAVEMENT MARKERS OBLITERATED BY MILLING AND RESURFACING OPERATIONS ON SIDE STREETS AND ENTRANCES SHALL BE REPLACED AND PAID FOR IN KIND.
- ALL PAVEMENT PATCHING, CURB AND GUTTER REMOVAL AND REPLACEMENT, DRAINAGE ADJUSTMENT LOCATIONS WILL BE DETERMINED IN THE FIELD BY THE RESIDENT ENGINEER.
- ALL DAMAGE TO EXISTING PAVEMENT MARKINGS OR RAISED REFLECTIVE PAVEMENT MARKERS OUTSIDE THE REMOVAL LINE SHOWN ON THE PLANS SHALL BE REPLACED AT THE CONTRACTOR'S EXPENSE.
- BUTT JOINTS WILL BE INSTALLED AT THE ENDS OF ALL RESURFACING LIMITS (WHERE RESURFACING MEETS EXISTING PAVEMENT), IN ACCORDANCE WITH THE "BUTT JOINT AND HMA TAPER DETAILS" SHEET INCLUDED IN THE PLANS, UNLESS OTHERWISE SPECIFIED.
- FRAMES AND GRATES ADJUSTMENT OF PRIVATE UTILITIES WITHIN THE LIMITS OF THE IMPROVEMENTS SHALL BE DONE BY THEIR RESPECTIVE OWNERS AND ARE NOT PART OF THIS CONTRACT.
- TEN (10) FOOT TRANSITIONS SHALL BE USED TO MATCH PROPOSED CURB AND GUTTERS AND MEDIAN ITEMS OF WORK TO EXISTING CURBS AND GUTTER AND MEDIANS IN THE FIELD, UNLESS OTHERWISE SHOWN. THE TRANSITIONS SHALL BE PAID FOR THE CONTRACT UNIT PRICE FOR THE PROPOSED ITEMS OF WORK SPECIFIED.

MS. PATRICE HARRIS, AREA TRAFFIC FIELD TECHNICIAN

GENERAL NOTES CONTINUE ON SHEET NO. 3

REVISIED SHEET 1/4/2024

MODEL: Default  
FILE: \\paw.bentley.com\FWIDOT\Documents\DOT\_Offices\Bhrt\1\Projects\126822\CADD\Drawings\126822-Sub\genindex.dgn

USER NAME = AYA,Elkhatib	DESIGNED -	REVISED -	STATE OF ILLINOIS DEPARTMENT OF TRANSPORTATION	INDEX OF SHEETS, STATE STANDARDS, AND GENERAL NOTES PULASKI ROAD (COLUMBUS AVENUE TO US 12 (95TH STREET))	F.A.P. RTE.	SECTION	COUNTY	TOTAL SHEETS	SHEET NO.	
DRAWN -	REVISED -	368			FAP 0368 22 RS	COOK	53	2		
PLOT SCALE = 100.0000' / in.	CHECKED -	REVISED -			CONTRACT NO. 62T87					
PLOT DATE = 10/24/2023	DATE -	REVISED -			SCALE:	SHEET	OF	SHEETS	STA.	TO

**GENERAL NOTES (CONTINUED)**

16. WHEN MILLED PAVEMENT IS OPEN TO TRAFFIC, THE MAXIMUM GRADE DIFFERENTIAL BETWEEN PASSES OF THE MILLING MACHINE SHALL NOT EXCEED 1 1/2 INCHES (40 MM) WHERE THE SPEED LIMIT IS 45 MPH (80 KM/H) OR LESS AND 1 INCH (25 MM) WHERE THE SPEED LIMIT IS GREATER THAN 45 MPH (80 KM/H). WITH WRITTEN APPROVAL FROM THE ENGINEER. A MAXIMUM GRADE DIFFERENTIAL OF 3 INCHES (75 MM) MAY BE ALLOWED IF THE EDGE OF THE MILLING IS SLOPED A MIN. 1:3 (V:H).
17. LANE MARKERS ARE TO BE USED AS SHOWN ON THE DISTRICT ONE DETAIL "TYPICAL APPLICATIONS - RAISED REFLECTIVE PAVEMENT MARKERS (SNOW-PLOW RESISTANT)" SHOWN IN THE PLANS.
18. EXISTING BROKEN FRAMES AND LIDS SHALL BE REMOVED AND DISPOSED OF BY THE CONTRACTOR AND SHALL BE REPLACED AS DIRECTED BY THE ENGINEER. REPLACEMENT FRAMES AND LIDS WILL BE PAID FOR ACCORDING TO THE ARTICLE 194.04 OF THE STANDARD UNLESS A SEPERATE PAY ITEM HAS BEEN PROVIDED.
19. PROPOSED SIDEWALK RAMP SHALL CONFORM TO CURRENT ADA REQUIREMENTS AND APPLICABLE STATE HIGHWAY STANDARDS OR AS DETERMINED BY THE ENGINEER.
20. THE CONTRACTOR SHALL MAINTAIN PEDESTRIAN ACCESS AT ALL TIMES DURING CONSTRUCTION.
21. OVERNIGHT LANE CLOSURES SHALL NOT BE ALLOWED FOR REHABILITATION PROJECTS INVOLVING DAYTIME MILLING AND RESURFACING OPERATIONS AND CLASS D PATCHING UNLESS OTHER CONDITIONS WARRANT EXTENDED LANE CLOSURES AS DETERMINED AND APPROVED IN WRITING BY THE ENGINEER OR AS PROVIDED FOR IN THE CONTRACT SPECIFICATIONS.
22. CONTACT THE IDOT ROADSIDE DEVELOPMENT UNIT AT 847-705-4171 AT LEAST 2 WEEKS PRIOR TO THE BEGINNING LANDSCAPE AND FORESTRY WORK FOR LAYOUT
23. ALL MILLED SURFACES SHALL BE A UNIFORM CROSS SLOPE PER LANE AND FREE OF RIDGES BETWEEN PASSES. ANY DEVIATIONS SHALL BE CORRECTED AT NO COST TO THE DEPARTMENT.
24. DO NOT SCALE PLANS FOR CONSTRUCTION DIMENSIONS.
25. ALL CRACK ROUTING & CRACK SEALING LOCATIONS WILL BE DETERMINED IN THE FIELD BY THE ENGINEER. CRACK ROUTING SHALL BE OMITTED WHERE VEHICLE DETECTOR LOOPS & RAISED REFLECTIVE PAVEMENT MARKERS ARE PRESENT IN THE PAVEMENT.
26. MATERIALS RESULTING FROM THE ROUTING OF CRACKS IN THE EXISTING PAVEMENT MAY BE PLACED, SHAPED AND COMPACTED TO THE SATISFACTION OF THE ENGINEER ALONG EXISTING AGGREGATE SHOULDERS ADJACENT TO THE PAVEMENT. ALL MATERIALS RESULTING FROM THE ROUTING OF CRACKS IN PAVEMENTS WITHOUT AGGREGATE SHOULDERS AND SURPLUS MATERIALS RESULTING FROM THE ROUTING OF CRACKS IN PAVEMENTS WITH AGGREGATE SHOULDERS, WHERE ALL MATERIALS ARE NOT PLACED ALONG EXISTING AGGREGATE SHOULDERS, SHALL BE DISPOSED OF AS SPECIFIED IN ARTICLE 202.03 OF THE STANDARD SPECIFICATIONS.
27. MODIFIED URETHANE PAVEMENT MARKING SHALL BE PLACED IMMEDIATELY AFTER C & J SEALER TEMPERATURE HAS COOLED DOWN AND DOES NOT AFFECT THE APPLICATION OF THE MODIFIED URETHANE PAVEMENT MARKING.
28. DURING CONSTRUCTION OPERATIONS, IF ANY LOOSE MATERIAL IS DEPOSITED IN THE FLOW LINE OF DRAINAGE STRUCTURES SUCH THAT THE NATURAL FLOW OF WATER IS OBSTRUCTED, THE MATERIAL SHALL BE REMOVED AT THE CLOSE OF EACH WORKING DAY. AT THE CONCLUSION OF CONSTRUCTION OPERATION, ALL UTILITY STRUCTURES SHALL BE FREE FROM DUST AND DEBRIS. THE WORK SPECIFIED ABOVE WILL NOT BE PAID FOR SEPARATELY BUT SHALL BE INCLUDED IN THE COST OF THE CONTRACT.
29. TEMPORARY PAVEMENT MARKING - LINE 4" - TYPE III TAPE SHALL BE USED FOR SHORT TERM PAVEMENT MARKINGS ON ALL FINAL SURFACES.
30. CTA TRAFFIC PLANNING MUST BE NOTIFIED AT LEAST 2 WEEKS IN ADVANCE OF THE TIME CONSTRUCTION WILL COMMENCE, AND IN ADVANCE OF ANY IMPACT TO BUS STOPS OR BUS OPERATIONS. TRAFFIC.PLANNING@TRANSITCHICAGO.COM.
31. THE CTA REQUIRES THAT NO TWO CONSECUTIVE BUS STOPS IN ONE DIRECTION OF TRAVEL ARE ELIMINATED AT THE SAME TIME. THE CONTRACTOR SHALL SUBSTAGE WORK AS NECESSARY OR PROVIDE TEMPORARY ADA COMPLIANT PEDESTRIAN ACCESS THROUGH THE WORK ZONE TO AN EXISTING OR TEMPORARILY RELOCATED BUS STOP.
32. ANY BUS STOP RELOCATIONS/ELIMINATIONS/CONSOLIDATIONS WITHIN THE CITY OF CHICAGO WILL REQUIRE WARD APPROVAL.



30. CTA TRAFFIC PLANNING MUST BE NOTIFIED AT LEAST 2 WEEKS IN ADVANCE OF THE TIME CONSTRUCTION WILL COMMENCE, AND IN ADVANCE OF ANY IMPACT TO BUS STOPS OR BUS OPERATIONS. TRAFFIC.PLANNING@TRANSITCHICAGO.COM.

31. THE CTA REQUIRES THAT NO TWO CONSECUTIVE BUS STOPS IN ONE DIRECTION OF TRAVEL ARE ELIMINATED AT THE SAME TIME. THE CONTRACTOR SHALL SUBSTAGE WORK AS NECESSARY OR PROVIDE TEMPORARY ADA COMPLIANT PEDESTRIAN ACCESS THROUGH THE WORK ZONE TO AN EXISTING OR TEMPORARILY RELOCATED BUS STOP.

32. ANY BUS STOP RELOCATIONS/ELIMINATIONS/CONSOLIDATIONS WITHIN THE CITY OF CHICAGO WILL REQUIRE WARD APPROVAL.

MODEL: Default  
 FILE: \\nas01-pw-bentley.com\P\IDOT\Documents\IDOT\_Offices\DH\dctc\_1\Projects\126822\CADD\Drawings\126822-Sub\gennotes.dgn

USER NAME = aya.elkhatib	DESIGNED -	REVISED -
	DRAWN -	REVISED -
PLOT SCALE = 100.0000 ' / in.	CHECKED -	REVISED -
PLOT DATE = 12/27/2023	DATE -	REVISED -

**STATE OF ILLINOIS  
DEPARTMENT OF TRANSPORTATION**

**INDEX OF SHEETS, STATE STANDARDS, AND GENERAL NOTES  
PULASKI ROAD (COLUMBUS AVENUE TO US 12 (95TH STREET))**

SCALE: SHEET OF SHEETS STA. TO STA.

F.A.P. RTE.	SECTION	COUNTY	TOTAL SHEETS	SHEET NO.
368	FAP 0368 22 RS	COOK	53	3
			CONTRACT NO. 62T87	
		ILLINOIS	FED. AID PROJECT	

REVISED SHEET 1/4/2024

SUMMARY OF QUANTITIES			TOTAL QUANTITIES	CONSTRUCTION TYPE CODE		
CODE NO	ITEM	UNIT		80% FED 20% STATE ROADWAY 0005 URBAN	100% STATE ROADWAY 005 URBAN	80% FED 20% STATE TRAFFIC SIGNALS 0021
20200100	EARTH EXCAVATION	CU YD	88	88		
21101615	TOPSOIL FURNISH AND PLACE, 4"	SO YD	292	292		
25200110	SODDING, SALT TOLERANT	SO YD	292	292		
25200200	SUPPLEMENTAL WATERING	UNIT	3	3		
40600290	BITUMINOUS MATERIALS (TACK COAT)	POUND	16202	16202		
40600370	LONGITUDINAL JOINT SEALANT	FOOT	21407	21407		
40600400	MIXTURE FOR CRACKS, JOINTS, AND FLANGEWAYS	TON	54	54		
40600982	HOT-MIX ASPHALT SURFACE REMOVAL - BUTT JOINT	SO YD	252	252		
40601005	HOT-MIX ASPHALT REPLACEMENT OVER PATCHES	TON	370	370		
40605026	POLYMERIZED HOT-MIX ASPHALT SURFACE COURSE, STONE MATRIX ASPHALT, 9.5, MIX "F", N80	TON	3536	3536		
42001300	PROTECTIVE COAT	SO YD	774	774		
42300200	PORTLAND CEMENT CONCRETE DRIVEWAY PAVEMENT, 6 INCH	SO YD	7	7		

SUMMARY OF QUANTITIES			TOTAL QUANTITIES	CONSTRUCTION TYPE CODE		
CODE NO	ITEM	UNIT		80% FED 20% STATE ROADWAY 0005 URBAN	100% STATE ROADWAY 005 URBAN	80% FED 20% STATE TRAFFIC SIGNALS 0021
42400200	PORTLAND CEMENT CONCRETE SIDEWALK 5 INCH	SO FT	8521	8521		
42400800	DETECTABLE WARNINGS	SO FT	286	286		
44000156	HOT-MIX ASPHALT SURFACE REMOVAL, 1 3/4"	SO YD	36004	36004		
44000200	DRIVEWAY PAVEMENT REMOVAL	SO YD	7	7		
44000600	SIDEWALK REMOVAL	SO FT	5284	5284		
44002216	HOT-MIX ASPHALT REMOVAL OVER PATCHES, 4"	SO YD	1650	1650		
44003100	MEDIAN REMOVAL	SO FT	737	737		
44201753	CLASS D PATCHES, TYPE II, 9 INCH	SO YD	100	100		
44201757	CLASS D PATCHES, TYPE III, 9 INCH	SO YD	252	252		
44201759	CLASS D PATCHES, TYPE IV, 9 INCH	SO YD	1350	1350		
44201789	CLASS D PATCHES, TYPE II, 12 INCH	SO YD	14	14		
44201796	CLASS D PATCHES, TYPE IV, 12 INCH	SO YD	69	69		
45100100	CRACK ROUTING (PAVEMENT)	FOOT	3489	3489		
45100200	CRACK FILLING	POUND	997	997		

△ REVISION SHEET 1/4/2024

\* = SPECIALTY ITEMS  
 △ = NON-PARTICIPATING WORK (100% STATE)

FILE NAME =	USER NAME = AYAEIkhafid	DESIGNED -	REVISED -
pw\N\dot-pw\benfrey.com\PIW\DOT Documents\1007 - Office\District\Projects\DI26822\CADD\as\Des\gn\DI26822-st-300.DWG		DRAWN -	REVISED -
	PLOT SCALE = 100.0000' / 1in	CHECKED -	REVISED -
	PLOT DATE = 10/24/2023	DATE -	REVISED -

**STATE OF ILLINOIS  
DEPARTMENT OF TRANSPORTATION**



**SUMMARY OF QUANTITIES  
PULASKI ROAD (COLUMBUS AVE TO US 12 (95TH STREET))**

SCALE: SHEET NO. OF SHEETS STA. TO STA.



F.A.P. RTE.	SECTION	COUNTY	TOTAL SHEETS	SHEET NO.
368	FAP 0368 22 RS	COOK	53	4
CONTRACT NO. 62T87				
FED. ROAD DIST. NO. 1 ILLINOIS FED. AID PROJECT				

SUMMARY OF QUANTITIES			TOTAL QUANTITIES	CONSTRUCTION TYPE CODE				
CODE NO	ITEM	UNIT		80% FED 20% STATE ROADWAY 0005 URBAN	100% STATE ROADWAY 005 URBAN	80% FED 20% STATE TRAFFIC SIGNALS 0021		
60252800	CATCH BASINS TO BE RECONSTRUCTED	EACH	1	1				
60255700	MANHOLES TO BE ADJUSTED WITH NEW TYPE 1 FRAME, OPEN LID	EACH	1	1				
60257900	MANHOLES TO BE RECONSTRUCTED	EACH	1	1				
60300105	FRAMES AND GRATES TO BE ADJUSTED	EACH	2	2				
60300305	FRAMES AND LIDS TO BE ADJUSTED	EACH	3	3				
60404950	FRAMES AND GRATES, TYPE 24	EACH	1	1				
60406000	FRAMES AND LIDS, TYPE 1, OPEN LID	EACH	1	1				
60406100	FRAMES AND LIDS, TYPE 1, CLOSED LID	EACH	1	1				
60623800	CONCRETE BARRIER MEDIAN	SQ FT	270	270				
* 66900200	NON-SPECIAL WASTE DISPOSAL	CU YD	45	45				
* 66900530	SOIL DISPOSAL ANALYSIS	EACH	3	3				
* 66901001	REGULATED SUBSTANCES PRE-CONSTRUCTION PLAN	L SUM	1	1				
* 66901003	REGULATED SUBSTANCES FINAL CONSTRUCTION REPORT	L SUM	1	1				
* 66901006	REGULATED SUBSTANCES MONITORING	CAL DA	8	8				
67100100	MOBILIZATION	L SUM	1	1				

SUMMARY OF QUANTITIES				TOTAL QUANTITIES	CONSTRUCTION TYPE CODE			
CODE NO	ITEM	UNIT			80% FED 20% STATE ROADWAY 0005 URBAN	100% STATE ROADWAY 005 URBAN	80% FED 20% STATE TRAFFIC SIGNALS 0021	
70102625	TRAFFIC CONTROL AND PROTECTION, STANDARD 701606	L SUM	1	1				
70102630	TRAFFIC CONTROL AND PROTECTION, STANDARD 701601	L SUM	1	1				
70102632	TRAFFIC CONTROL AND PROTECTION, STANDARD 701602	L SUM	1	1				
70102635	TRAFFIC CONTROL AND PROTECTION, STANDARD 701701	L SUM	1	1				
70102640	TRAFFIC CONTROL AND PROTECTION, STANDARD 701801	L SUM	1	1				
70300100	SHORT TERM PAVEMENT MARKING	FOOT	7615	7615				
70300150	SHORT TERM PAVEMENT MARKING REMOVAL	SO FT	4652	4652				
70300211	TEMPORARY PAVEMENT MARKING LETTERS AND SYMBOLS - PAINT	SO FT	929	929				
70300221	TEMPORARY PAVEMENT MARKING - LINE 4"- PAINT	FOOT	15214	15214				
70300241	TEMPORARY PAVEMENT MARKING - LINE 6"- PAINT	FOOT	2399	2399				
70300261	TEMPORARY PAVEMENT MARKING - LINE 12"- PAINT	FOOT	364	364				

 REVISED SHEET 1/4/2024  
 \* = SPECIALTY ITEMS  
 = NON-PARTICIPATING WORK (100% STATE)

SUMMARY OF QUANTITIES				CONSTRUCTION TYPE CODE					SUMMARY OF QUANTITIES				CONSTRUCTION TYPE CODE							
CODE NO	ITEM	UNIT	TOTAL QUANTITIES	80% FED 20% STATE ROADWAY 0005 URBAN	100% STATE ROADWAY 005 URBAN	80% FED 20% STATE TRAFFIC SIGNALS 0021				CODE NO	ITEM	UNIT	TOTAL QUANTITIES	80% FED 20% STATE ROADWAY 0005 URBAN	100% STATE ROADWAY 005 URBAN	80% FED 20% STATE TRAFFIC SIGNALS 0021				
70300281	TEMPORARY PAVEMENT MARKING - LINE 24"- PAINT	FOOT	494	494					*	78009012	MODIFIED URETHANE PAVEMENT MARKING - LINE 12"	FOOT	55	55						
70306120	TEMPORARY PAVEMENT MARKING - LINE 4" - TYPE III TAPE	FOOT	3803	3803					*	78009024	MODIFIED URETHANE PAVEMENT MARKING - LINE 24"	FOOT	312	312						
* 72400310	REMOVE SIGN PANEL - TYPE 1	SQ FT	6	6																
* 78000100	THERMOPLASTIC PAVEMENT MARKING - LETTERS AND SYMBOLS	SQ FT	929	929					*	78100100	RAISED REFLECTIVE PAVEMENT MARKER	EACH	520	520						
* 72400710	RELOCATE SIGN PANEL - TYPE 1	SQ FT	27	27						78300200	RAISED REFLECTIVE PAVEMENT MARKER REMOVAL	EACH	520	520						
* 78000200	THERMOPLASTIC PAVEMENT MARKING - LINE 4"	FOOT	15214	15214						78300202	PAVEMENT MARKING REMOVAL - WATER BLASTING	SQ FT	8552	8552						
* 78000400	THERMOPLASTIC PAVEMENT MARKING - LINE 6"	FOOT	2399	2399					*	81028200	UNDERGROUND CONDUIT, GALVANIZED STEEL, 2" DIA.	FOOT	20				20			
* 78000600	THERMOPLASTIC PAVEMENT MARKING - LINE 12"	FOOT	364	364						* 85000200	MAINTENANCE OF EXISTING TRAFFIC SIGNAL INSTALLATION	EACH	4	2			2			
* 78000650	THERMOPLASTIC PAVEMENT MARKING - LINE 24"	FOOT	494	494					*	87301125	ELECTRIC CABLE IN CONDUIT, SIGNAL NO. 12 3C	FOOT	766				766			
* 78009000	MODIFIED URETHANE PAVEMENT MARKING - LETTERS AND SYMBOLS	SQ FT	329	329						* 87301215	ELECTRIC CABLE IN CONDUIT, SIGNAL NO. 14 2C	FOOT	30				30			
* 78009004	MODIFIED URETHANE PAVEMENT MARKING - LINE 4"	FOOT	772	772					*	87900200	DRILL EXISTING HANDHOLE	EACH	1				1			
* 78009006	MODIFIED URETHANE PAVEMENT MARKING - LINE 6"	FOOT	592	592					*	88600100	DETECTOR LOOP, TYPE I	FOOT	709				709			

 REVISION SHEET 1/4/2024  
 \* = SPECIALTY ITEMS  
 = NON-PARTICIPATING WORK (100% STATE)

SUMMARY OF QUANTITIES			TOTAL QUANTITIES	CONSTRUCTION TYPE CODE					
CODE NO	ITEM	UNIT		80% FED 20% STATE ROADWAY 0005 URBAN	100% STATE ROADWAY 005 URBAN	80% FED 20% STATE TRAFFIC SIGNALS 0021			
* 89502210	MODIFY EXISTING CONTROLLER CABINET	EACH	2		2				
* 89502375	REMOVE EXISTING TRAFFIC SIGNAL EQUIPMENT	EACH	2		2				
* 89502376	REBUILD EXISTING HANDHOLE	EACH	5	5					
X0320050	CONSTRUCTION LAYOUT (SPECIAL)	L SUM	1	1					
* X1400378	PEDESTRIAN SIGNAL POST, 5 FT.	EACH	1		1				
X4400501	COMBINATION CURB AND GUTTER REMOVAL AND REPLACEMENT LESS THAN OR EQUAL TO 10 FEET	FOOT	290	290					
X4400503	COMBINATION CURB AND GUTTER REMOVAL AND REPLACEMENT GREATER THAN 10 FEET	FOOT	1211	1211					
△ X5537800	STORM SEWERS TO BE CLEANED 12"	FOOT	90		90				
X6030310	FRAMES AND LIDS TO BE ADJUSTED (SPECIAL)	EACH	39	39					
X6700407	ENGINEER'S FIELD OFFICE, TYPE A (D1)	CAL MO	12	12					
* X8140238	REBUILD EXISTING DOUBLE HANDHOLE	EACH	1	1					
* X8760200	ACCESSIBLE PEDESTRIAN SIGNALS	EACH	16		16				

SUMMARY OF QUANTITIES			TOTAL QUANTITIES	CONSTRUCTION TYPE CODE					
CODE NO	ITEM	UNIT		80% FED 20% STATE ROADWAY 0005 URBAN	100% STATE ROADWAY 005 URBAN	80% FED 20% STATE TRAFFIC SIGNALS 0021			
* X8780012	CONCRETE FOUNDATION, TYPE A 12-INCH DIAMETER	FOOT	4		4				
△ Z0018500	DRAINAGE STRUCTURES TO BE CLEANED	EACH		6					
Z0030850	TEMPORARY INFORMATION SIGNING	SO FT	154.2	154.2					
* Z0033044	RE-OPTIMIZE TRAFFIC SIGNAL SYSTEM LEVEL	EACH	2		2				
Ø Z0076600	TRAINEES	HOURS	500	500					
Ø Z0076604	TRAINEES - TRAINING PROGRAM GRADUATE	HOURS	500	500					

△ REVISED SHEET 1/4/2024  
Ø 0042  
\* = SPECIALTY ITEMS  
△ = NON-PARTICIPATING WORK (100% STATE)

FILE NAME =	USER NAME = AYAEIkhafid	DESIGNED -	REVISED -
pw\N\dot-pw\benfry.com\PI\DOT\Documents\100T - Off\100s\Dist\101\Projects\DI26822\CADD\10\Des\10\DI26822-st-300.DWG		DRAWN -	REVISED -
PLOT SCALE = 100.0000' / 1in	CHECKED -	REVISED -	
PLOT DATE = 10/24/2023	DATE -	REVISED -	

**STATE OF ILLINOIS  
DEPARTMENT OF TRANSPORTATION**

**SUMMARY OF QUANTITIES**

SCALE: SHEET NO. OF SHEETS STA. TO STA.

F.A.P. RTE.	SECTION	COUNTY	TOTAL SHEETS	SHEET NO.
368	FAP 0368 22 RS	COOK	53	7
CONTRACT NO. 62187				
FED. ROAD DIST. NO. 1 ILLINOIS FED. AID PROJECT				

SCHEDULE OF QUANTITIES - ADA IMPROVEMENT

STATE ROUTE	CROSS STREET	CORNER	20200100	21101615	25200110	25200200	42001300	42400200	42400800	44000600	60255700	85000200	89502376	X4400501	X4400503	X8140238
			EARTH EXCAVATION	TOPSOIL FURNISH AND PLACE, 4"	SODDING, SALT TOLERANT	SUPPLEMENTAL WATERING	PROTECTIVE COAT	PORTLAND CEMENT CONCRETE SIDEWALK, 5 INCH	DETECTABLE WARNINGS	SIDEWALK REMOVAL	MANHOLES TO BE ADJUSTED WITH NEW TYPE 1 FRAME, OPEN LID	MAINTENANCE OF EXISTING TRAFFIC SIGNAL INSTALLATION	REBUILD EXISTING HANDHOLE	COMBINATION CURB AND GUTTER REMOVAL AND REPLACEMENT LESS THAN OR EQUAL TO 10 FEET	COMBINATION CURB AND GUTTER REMOVAL AND REPLACEMENT GREATER THAN 10 FEET	REBUILD EXISTING DOUBLE HANDHOLE
			CU YD	SQ YD	SQ YD	UNIT	SQ YD	SQ FT	SQ FT	SQ FT	EACH	EACH	EACH	FOOT	FOOT	EACH
Pulaski Road	95th Street	NE	3.25	7.3	7.3	0.07	49.1	325.0	15.0	325.0	1.0		1.0	19.5	19.5	1.0
		NW	3.25	0.0	0.0	0.00	49.4	325.0	15.0	325.0				20.0	20.0	
		SE	3.25	0.0	0.0	0.00	49.4	325.0	15.0	325.0				20.0	20.0	
		SW	3.25	16.7	16.7	0.17	49.4	325.0	15.0	325.0				20.0	20.0	
	Jewel Osco (South Entrance)	NW	2.00	10.9	10.9	0.11	26.2	200.0	10.0	200.0				6.0	6.0	
		SW	2.25	3.8	3.8	0.04	33.7	225.0	10.0	225.0				13.0	13.0	
	94th Street	NE	3.14	35.4	35.4	0.35	39.9	263.5	10.0	313.5				16.0	16.0	
		NW	2.00	12.8	12.8	0.13	27.8	200.0	10.0	200.0				8.3	8.3	
		SE	3.00	21.1	21.1	0.21	47.2	300.0	10.0	300.0				20.8	20.8	
		SW	2.00	11.9	11.9	0.12	26.7	200.0	10.0	200.0				6.8	6.8	
	93rd Street	NE	2.45	21.9	21.9	0.22	37.0	245.0	20.0	245.0	1.0	1.0	1.0	14.7	14.7	
		NW	3.25	19.1	19.1	0.19	49.7	325.0	20.0	325.0	20.5			20.5		
		SE	2.75	15.1	15.1	0.15	40.5	275.0	20.0	275.0	14.9			14.9		
		SW	2.45	22.3		0.22	38.3	245.0	20.0	245.0	16.6			16.6		
	92nd Street	NE	2.50	25.7	25.7	0.26	35.0	230.0	10.0	250.0				14.2	14.2	
		SE	3.75	15.2	15.2	0.15	45.8	375.0	10.0	375.0				6.3	6.3	
	91st Place	NW	2.25	11.6	11.6	0.12	33.9	225.0	10.0	225.0				13.4	13.4	
		SW	2.25	19.6	19.6	0.20	32.1	200.0	10.0	225.0				14.9	14.9	
91st Street	SE	2.60	17.5	17.5	0.17	40.2	260.0	10.0	260.0				17.0	17.0		
87th St	North Median	0.00	0.0	0.0	0.00	4.4	40.0	20.0	0.0				0.0	0.0		
	SW	1.20	3.3	3.3	0.03	18.3	120.0	16.0	120.0				7.5	7.5		
<b>TOTAL</b>			55	292	292	3.00	774	5229	286	5284	1	2	5	290	290	1



MODEL: Default  
 FILE: \\nas01c-paw.bentley.com\PWDOT\Documents\DOT\_Offices\Bharat\_1\Projects\126822\CADD\Drawings\126822-Sub-Schedule.dgn

⚠️ REVISED ENTIRE SHEET 1/4/2024

USER NAME = aya.elkhatib	DESIGNED -	REVISED -
	DRAWN -	REVISED -
PLOT SCALE = 100.0000' / in.	CHECKED -	REVISED -
PLOT DATE = 1/2/2024	DATE -	REVISED -

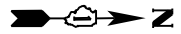
**STATE OF ILLINOIS  
DEPARTMENT OF TRANSPORTATION**

**SCHEDULE OF QUANTITIES - ADA IMPROVEMENT  
PULASKI ROAD (COLUMBUS AVENUE TO US 12 (95TH STREET))**

SCALE: SHEET OF SHEETS STA. TO STA.

F.A.P. RTE.	SECTION	COUNTY	TOTAL SHEETS	SHEET NO.
368	FAP 0368 22 RS	COOK	53	10
ILLINOIS FED. AID PROJECT			CONTRACT NO. 62T87	

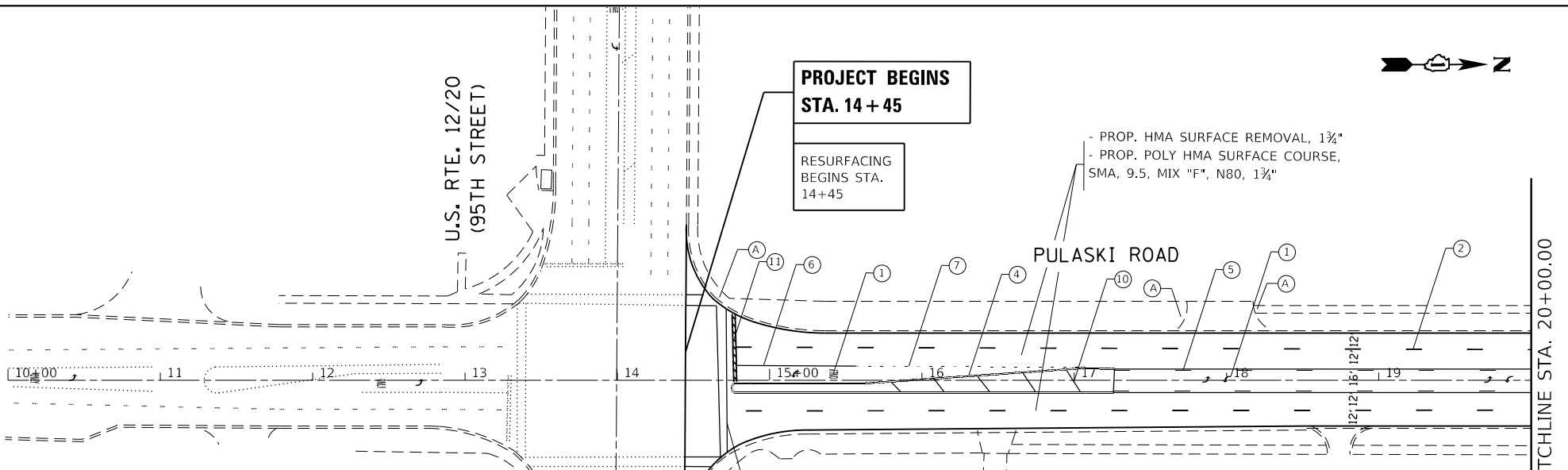




**PROJECT BEGINS  
STA. 14 + 45**

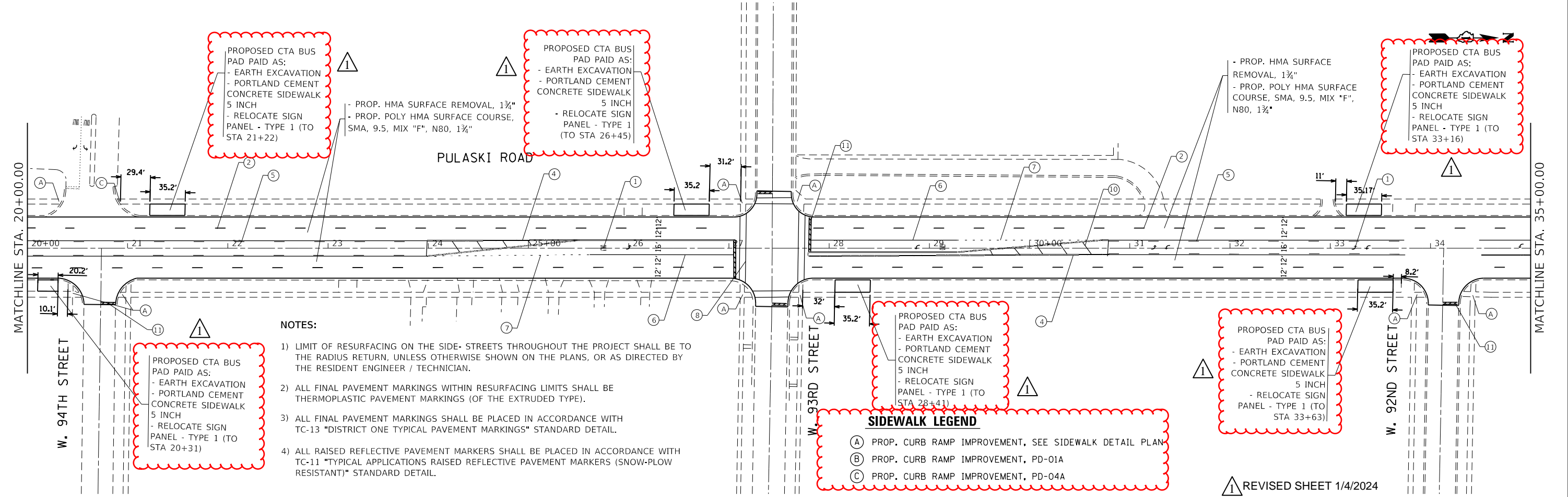
RESURFACING  
BEGINS STA.  
14+45

- PROP. HMA SURFACE REMOVAL, 1 3/4"  
- PROP. POLY HMA SURFACE COURSE,  
SMA, 9.5, MIX "F", N80, 1 3/4"



**PAVEMENT MARKING LEGEND**

- ① PROP. THERMOPLASTIC PAVEMENT MARKING LETTERS & SYMBOLS, SOLID WHITE (TYP.)
- ② PROP. THERMOPLASTIC PAVEMENT MARKING LINE, 4" SKIP DASH WHITE LANE LINE @ 30' SKIP & 10' DASH (TYP.)
- ③ PROP. THERMOPLASTIC PAVEMENT MARKING LINE, 4" SOLID YELLOW LINE (TYP.)
- ④ PROP. THERMOPLASTIC PAVEMENT MARKING LINE, 4" DOUBLE SOLID YELLOW LINE, 2 @ 11" C-C (TYP.)
- ⑤ PROP. THERMOPLASTIC PAVEMENT MARKING LINES, 4" SOLID YELLOW LINE @ 5 1/2' C-C FROM 4" SKIP-DASH YELLOW LINE @ 30' SKIP & 10' DASH (TYP.)
- ⑥ PROP. THERMOPLASTIC PAVEMENT MARKING LINE, 6" SOLID WHITE LINE (TYP.)
- ⑦ PROP. THERMOPLASTIC PAVEMENT MARKING LINE, 6" DOTTED WHITE LINE 2'-6" SPACING (TYP.)
- ⑧ PROP. THERMOPLASTIC PAVEMENT MARKING LINE, 6" SOLID WHITE CROSSWALK LINE, 2 @ 6' C-C (TYP.)
- ⑨ PROP. THERMOPLASTIC PAVEMENT MARKING LINE, 12" SOLID WHITE CONTINENTAL CROSSWALK (TYP.)
- ⑩ PROP. THERMOPLASTIC PAVEMENT MARKING LINE, 12" DIAGONAL SOLID YELLOW LINE @ 75' SPACING OR 5 MIN. (TYP.)
- ⑪ PROP. THERMOPLASTIC PAVEMENT MARKING LINE, 24" SOLID WHITE STOP BAR (TYP.)
- ⑫ PROP. MODIFIED URETHANE PAVEMENT MARKING LINE, 4" SOLID YELLOW LINE (TYP.)
- ⑬ PROP. MODIFIED URETHANE PAVEMENT MARKING LINE, 4" SKIP DASH WHITE LANE LINE @ 30' SKIP & 10' DASH (TYP.)
- ⑭ PROP. MODIFIED URETHANE PAVEMENT MARKING LINE, 6" SOLID WHITE TURN LANE (TYP.)
- ⑮ PROP. MODIFIED URETHANE PAVEMENT MARKING LINE, 6" SOLID WHITE CROSSWALK LINE, 2 @ 6' C-C (TYP.)
- ⑯ PROP. MODIFIED URETHANE PAVEMENT MARKING LINE, 12" DIAGONAL SOLID YELLOW LINE @ 75' SPACING OR 5 MIN. (TYP.)
- ⑰ PROP. MODIFIED URETHANE PAVEMENT MARKING LINE, 24" SOLID WHITE STOP BAR (TYP.)
- ⑱ PROP. MODIFIED URETHANE PAVEMENT MARKING LETTERS & SYMBOLS, SOLID WHITE (TYP.)



PROPOSED CTA BUS PAD PAID AS:  
- EARTH EXCAVATION  
- PORTLAND CEMENT CONCRETE SIDEWALK 5 INCH  
- RELOCATE SIGN PANEL - TYPE 1 (TO STA 20+31)

PROPOSED CTA BUS PAD PAID AS:  
- EARTH EXCAVATION  
- PORTLAND CEMENT CONCRETE SIDEWALK 5 INCH  
- RELOCATE SIGN PANEL - TYPE 1 (TO STA 21+22)

PROPOSED CTA BUS PAD PAID AS:  
- EARTH EXCAVATION  
- PORTLAND CEMENT CONCRETE SIDEWALK 5 INCH  
- RELOCATE SIGN PANEL - TYPE 1 (TO STA 26+45)

PROPOSED CTA BUS PAD PAID AS:  
- EARTH EXCAVATION  
- PORTLAND CEMENT CONCRETE SIDEWALK 5 INCH  
- RELOCATE SIGN PANEL - TYPE 1 (TO STA 28+41)

PROPOSED CTA BUS PAD PAID AS:  
- EARTH EXCAVATION  
- PORTLAND CEMENT CONCRETE SIDEWALK 5 INCH  
- RELOCATE SIGN PANEL - TYPE 1 (TO STA 33+63)

PROPOSED CTA BUS PAD PAID AS:  
- EARTH EXCAVATION  
- PORTLAND CEMENT CONCRETE SIDEWALK 5 INCH  
- RELOCATE SIGN PANEL - TYPE 1 (TO STA 33+16)

**NOTES:**

- 1) LIMIT OF RESURFACING ON THE SIDE- STREETS THROUGHOUT THE PROJECT SHALL BE TO THE RADIUS RETURN, UNLESS OTHERWISE SHOWN ON THE PLANS, OR AS DIRECTED BY THE RESIDENT ENGINEER / TECHNICIAN.
- 2) ALL FINAL PAVEMENT MARKINGS WITHIN RESURFACING LIMITS SHALL BE THERMOPLASTIC PAVEMENT MARKINGS (OF THE EXTRUDED TYPE).
- 3) ALL FINAL PAVEMENT MARKINGS SHALL BE PLACED IN ACCORDANCE WITH TC-13 "DISTRICT ONE TYPICAL PAVEMENT MARKINGS" STANDARD DETAIL.
- 4) ALL RAISED REFLECTIVE PAVEMENT MARKERS SHALL BE PLACED IN ACCORDANCE WITH TC-11 "TYPICAL APPLICATIONS RAISED REFLECTIVE PAVEMENT MARKERS (SNOW-PLOW RESISTANT)" STANDARD DETAIL.

**SIDEWALK LEGEND**

- (A) PROP. CURB RAMP IMPROVEMENT, SEE SIDEWALK DETAIL PLAN
- (B) PROP. CURB RAMP IMPROVEMENT, PD-01A
- (C) PROP. CURB RAMP IMPROVEMENT, PD-04A

REVISIED SHEET 1/4/2024

MODEL: Default  
FILE: \public\paw\benefit\com\paw\DOT\Documents\DOT\_Offices\Bharat: 1\Project\1216822\CADD\Drawings\Drawings\1216822-Sub\plan.dgn

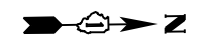
USER NAME = aya,elkhatib	DESIGNED -	REVISED -
	DRAWN -	REVISED -
PLOT SCALE = 100,0000' / in.	CHECKED -	REVISED -
PLOT DATE = 1/2/2024	DATE -	REVISED -

**STATE OF ILLINOIS  
DEPARTMENT OF TRANSPORTATION**

**ROADWAY AND PAVEMENT MARKING PLAN  
PULASKI ROAD (COLUMBUS AVE TO US 12 (95TH STREET))**

SCALE: 1"=50' SHEET OF SHEETS STA. TO STA.

F.A.P. RTE.	SECTION	COUNTY	TOTAL SHEETS	SHEET NO.
368	FAP 0368 22 RS	COOK	53	11
CONTRACT NO. 62T87				
ILLINOIS FED. AID PROJECT				



MATCHLINE STA. 35+00.00

MATCHLINE STA. 50+00.00

- PROP. HMA SURFACE REMOVAL, 1 3/4"  
- PROP. POLY HMA SURFACE COURSE,  
SMA, 9.5, MIX "F", N80, 1 3/4"

- PROP. HMA SURFACE REMOVAL, 1 3/4"  
- PROP. POLY HMA SURFACE COURSE,  
SMA, 9.5, MIX "F", N80, 1 3/4"

PROPOSED CTA BUS PAD PAID AS:  
- EARTH EXCAVATION  
- PORTLAND CEMENT CONCRETE  
SIDEWALK 5 INCH  
- RELOCATE SIGN PANEL - TYPE 1  
(TO STA 39+17)

W. 91ST PLACE

W. 90TH PLACE

PULASKI ROAD

W. 91ST STREET

**PAVEMENT MARKING LEGEND**

- ① PROP. THERMOPLASTIC PAVEMENT MARKING LETTERS & SYMBOLS, SOLID WHITE (TYP.)
- ② PROP. THERMOPLASTIC PAVEMENT MARKING LINE, 4" SKIP DASH WHITE LANE LINE @ 30' SKIP & 10' DASH (TYP.)
- ③ PROP. THERMOPLASTIC PAVEMENT MARKING LINE, 4" SOLID YELLOW LINE (TYP.)
- ④ PROP. THERMOPLASTIC PAVEMENT MARKING LINE, 4" DOUBLE SOLID YELLOW LINE, 2 @ 11" C-C (TYP.)
- ⑤ PROP. THERMOPLASTIC PAVEMENT MARKING LINES, 4" SOLID YELLOW LINE @ 5 1/2' C-C FROM 4" SKIP-DASH YELLOW LINE @ 30' SKIP & 10' DASH (TYP.)
- ⑥ PROP. THERMOPLASTIC PAVEMENT MARKING LINE, 6" SOLID WHITE LINE (TYP.)

PROPOSED CTA BUS PAD PAID AS:  
- EARTH EXCAVATION  
- PORTLAND CEMENT CONCRETE  
SIDEWALK 5 INCH  
- RELOCATE SIGN PANEL - TYPE 1 (TO STATION 40+23)

- ⑦ PROP. THERMOPLASTIC PAVEMENT MARKING LINE, 6" DOTTED WHITE LINE 2'-6" SPACING (TYP.)
- ⑧ PROP. THERMOPLASTIC PAVEMENT MARKING LINE, 6" SOLID WHITE CROSSWALK LINE, 2 @ 6' C-C (TYP.)
- ⑨ PROP. THERMOPLASTIC PAVEMENT MARKING LINE, 12" SOLID WHITE CONTINENTAL CROSSWALK (TYP.)
- ⑩ PROP. THERMOPLASTIC PAVEMENT MARKING LINE, 12" DIAGONAL SOLID YELLOW LINE @ 75' SPACING OR 5 MIN. (TYP.)
- ⑪ PROP. THERMOPLASTIC PAVEMENT MARKING LINE, 24" SOLID WHITE STOP BAR (TYP.)
- ⑫ PROP. MODIFIED URETHANE PAVEMENT MARKING LINE, 4" SOLID YELLOW LINE (TYP.)

- ⑬ PROP. MODIFIED URETHANE PAVEMENT MARKING LINE, 4" SKIP DASH WHITE LANE LINE @ 30' SKIP & 10' DASH (TYP.)
- ⑭ PROP. MODIFIED URETHANE PAVEMENT MARKING LINE, 6" SOLID WHITE TURN LANE (TYP.)
- ⑮ PROP. MODIFIED URETHANE PAVEMENT MARKING LINE, 6" SOLID WHITE CROSSWALK LINE, 2 @ 6' C-C (TYP.)
- ⑯ PROP. MODIFIED URETHANE PAVEMENT MARKING LINE, 12" DIAGONAL SOLID YELLOW LINE @ 75' SPACING OR 5 MIN. (TYP.)
- ⑰ PROP. MODIFIED URETHANE PAVEMENT MARKING LINE, 24" SOLID WHITE STOP BAR (TYP.)
- ⑱ PROP. MODIFIED URETHANE PAVEMENT MARKING LETTERS & SYMBOLS, SOLID WHITE (TYP.)

MATCHLINE STA. 50+00.00

MATCHLINE STA. 65+00.00

REMOVE SIGN PANEL FOR CTA BUS STOP AT 8900 SOUTH PULASKI RD. GOING SOUTHBOUND

- PROP. HMA SURFACE REMOVAL, 1 3/4"  
- PROP. POLY HMA SURFACE COURSE,  
SMA, 9.5, MIX "F", N80, 1 3/4"

PULASKI ROAD

SOUTH MAIN

- PROP. HMA SURFACE REMOVAL, 1 3/4"  
- PROP. POLY HMA SURFACE COURSE,  
SMA, 9.5, MIX "F", N80, 1 3/4"

**NOTES:**

- 1) LIMIT OF RESURFACING ON THE SIDE STREETS THROUGHOUT THE PROJECT SHALL BE TO THE RADIUS RETURN, UNLESS OTHERWISE SHOWN ON THE PLANS, OR AS DIRECTED BY THE RESIDENT ENGINEER / TECHNICIAN.
- 2) ALL FINAL PAVEMENT MARKINGS WITHIN RESURFACING LIMITS SHALL BE THERMOPLASTIC PAVEMENT MARKINGS (OF THE EXTRUDED TYPE).
- 3) ALL FINAL PAVEMENT MARKINGS SHALL BE PLACED IN ACCORDANCE WITH TC-13 "DISTRICT ONE TYPICAL PAVEMENT MARKINGS" STANDARD DETAIL.
- 4) ALL RAISED REFLECTIVE PAVEMENT MARKERS SHALL BE PLACED IN ACCORDANCE WITH TC-11 "TYPICAL APPLICATIONS RAISED REFLECTIVE PAVEMENT MARKERS (SNOW-PLOW RESISTANT)" STANDARD DETAIL.

REMOVE SIGN PANEL FOR CTA BUS STOP AT 8900 SOUTH PULASKI RD. GOING NORTHBOUND

**SIDEWALK LEGEND**

- (A) PROP. CURB RAMP IMPROVEMENT, SEE SIDEWALK DETAIL PLAN
- (B) PROP. CURB RAMP IMPROVEMENT, PD-01A
- (C) PROP. CURB RAMP IMPROVEMENT, PD-04A

PROPOSED CTA BUS PAD, PAID AS:  
- EARTH EXCAVATION  
- PORTLAND CEMENT CONCRETE  
SIDEWALK 5 INCH  
- RELOCATE SIGN PANEL - TYPE 1 (TO STA 58+86)

EXIST. LIGHT POLE  
PROP. LTL STORAGE EXTENSION  
- MEDIAN REMOVAL  
- CLASS D PATCHES, TYPE II, 12"  
- PROP. POLY HMA SURFACE COURSE, SMA, 9.5, MIX "F", N80, 1 3/4"

REVISED SHEET 1/4/2024

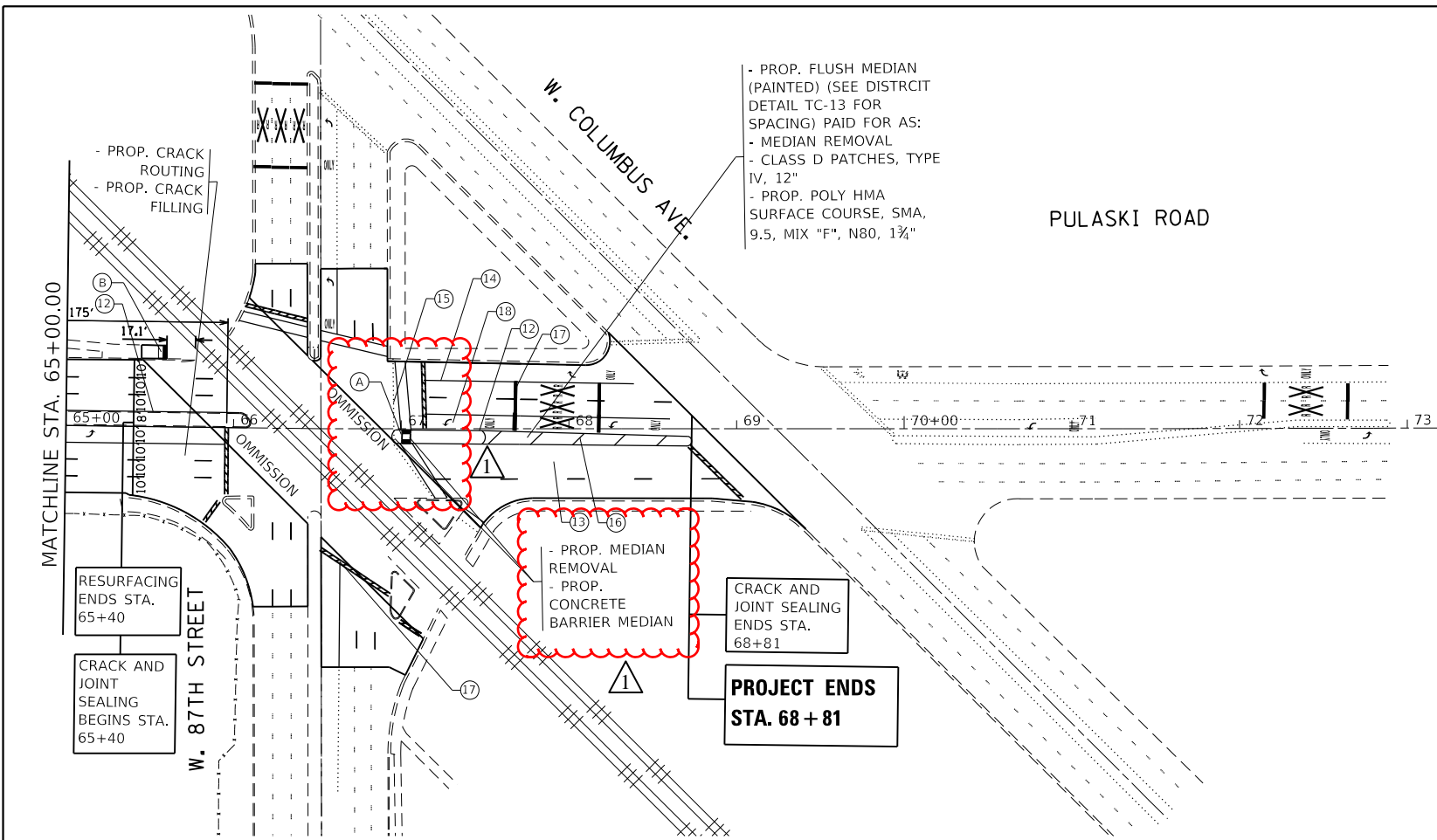
MODEL: Default  
FILE: \\s:\paw\paw\benefit\com\paw\DOT\Documents\DOT\_Offices\Drh\drh\_1\Projects\126822\CADD\Drawings\126822-Sub\plan.dgn

USER NAME = aya.elkhatib	DESIGNED -	REVISED -
	DRAWN -	REVISED -
PLOT SCALE = 100,0000' / in.	CHECKED -	REVISED -
PLOT DATE = 1/2/2024	DATE -	REVISED -

STATE OF ILLINOIS  
DEPARTMENT OF TRANSPORTATION

ROADWAY AND PAVEMENT MARKING PLAN  
PULASKI ROAD (COLUMBUS AVE TO US 12 (95TH STREET))  
SCALE: 1"=50' SHEET OF SHEETS STA. TO STA.

F.A.P. RTE.	SECTION	COUNTY	TOTAL SHEETS	SHEET NO.
368	FAP 0368 22 RS	COOK	53	12
CONTRACT NO. 62T87				
ILLINOIS FED. AID PROJECT				



**PAVEMENT MARKING LEGEND**

- ① PROP. THERMOPLASTIC PAVEMENT MARKING LETTERS & SYMBOLS, SOLID WHITE (TYP.)
- ② PROP. THERMOPLASTIC PAVEMENT MARKING LINE, 4" SKIP DASH WHITE LANE LINE @ 30' SKIP & 10' DASH (TYP.)
- ③ PROP. THERMOPLASTIC PAVEMENT MARKING LINE, 4" SOLID YELLOW LINE (TYP.)
- ④ PROP. THERMOPLASTIC PAVEMENT MARKING LINE, 4" DOUBLE SOLID YELLOW LINE, 2 @ 11" C-C (TYP.)
- ⑤ PROP. THERMOPLASTIC PAVEMENT MARKING LINES, 4" SOLID YELLOW LINE @ 5/2 C-C FROM 4" SKIP-DASH YELLOW LINE @ 30' SKIP & 10' DASH (TYP.)
- ⑥ PROP. THERMOPLASTIC PAVEMENT MARKING LINE, 6" SOLID WHITE LINE (TYP.)
- ⑦ PROP. THERMOPLASTIC PAVEMENT MARKING LINE, 6" DOTTED WHITE LINE 2'-6" SPACING (TYP.)
- ⑧ PROP. THERMOPLASTIC PAVEMENT MARKING LINE, 6" SOLID WHITE CROSSWALK LINE, 2 @ 6' C-C (TYP.)
- ⑨ PROP. THERMOPLASTIC PAVEMENT MARKING LINE, 12" SOLID WHITE CONTINENTAL CROSSWALK (TYP.)
- ⑩ PROP. THERMOPLASTIC PAVEMENT MARKING LINE, 12" DIAGONAL SOLID YELLOW LINE @ 75' SPACING OR 5 MIN. (TYP.)
- ⑪ PROP. THERMOPLASTIC PAVEMENT MARKING LINE, 24" SOLID WHITE STOP BAR (TYP.)
- ⑫ PROP. MODIFIED URETHANE PAVEMENT MARKING LINE, 4" SOLID YELLOW LINE (TYP.)

- ⑬ PROP. MODIFIED URETHANE PAVEMENT MARKING LINE, 4" SKIP DASH WHITE LANE LINE @ 30' SKIP & 10' DASH (TYP.)
- ⑭ PROP. MODIFIED URETHANE PAVEMENT MARKING LINE, 6" SOLID WHITE TURN LANE (TYP.)
- ⑮ PROP. MODIFIED URETHANE PAVEMENT MARKING LINE, 6" SOLID WHITE CROSSWALK LINE, 2 @ 6' C-C (TYP.)
- ⑯ PROP. MODIFIED URETHANE PAVEMENT MARKING LINE, 12" DIAGONAL SOLID YELLOW LINE @ 75' SPACING OR 5 MIN. (TYP.)
- ⑰ PROP. MODIFIED URETHANE PAVEMENT MARKING LINE, 24" SOLID WHITE STOP BAR (TYP.)
- ⑱ PROP. MODIFIED URETHANE PAVEMENT MARKING LETTERS & SYMBOLS, SOLID WHITE (TYP.)

**SIDEWALK LEGEND**

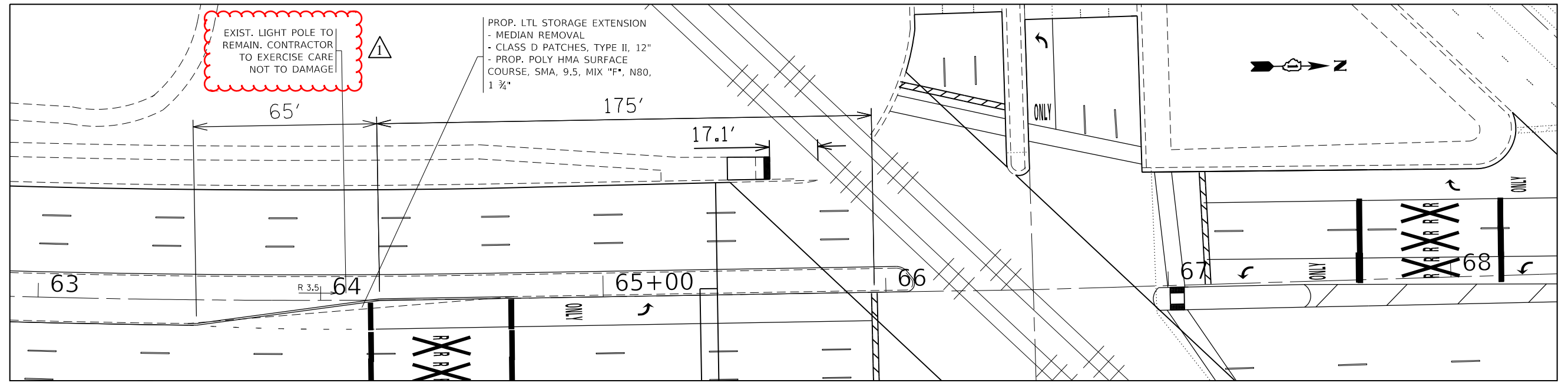
- Ⓐ PROP. CURB RAMP IMPROVEMENT, SEE SIDEWALK DETAIL PLAN
- Ⓑ PROP. CURB RAMP IMPROVEMENT, PD-01A
- Ⓒ PROP. CURB RAMP IMPROVEMENT, PD-04A



**NOTES:**

- 1) LIMIT OF RESURFACING ON THE SIDE- STREETS THROUGHOUT THE PROJECT SHALL BE TO THE RADIUS RETURN, UNLESS OTHERWISE SHOWN ON THE PLANS, OR AS DIRECTED BY THE RESIDENT ENGINEER / TECHNICIAN.
- 2) ALL FINAL PAVEMENT MARKINGS WITHIN RESURFACING LIMITS SHALL BE THERMOPLASTIC PAVEMENT MARKINGS (OF THE EXTRUDED TYPE).
- 3) ALL FINAL PAVEMENT MARKINGS SHALL BE PLACED IN ACCORDANCE WITH TC-13 "DISTRICT ONE TYPICAL PAVEMENT MARKINGS" STANDARD DETAIL.
- 4) ALL RAISED REFLECTIVE PAVEMENT MARKERS SHALL BE PLACED IN ACCORDANCE WITH TC-11 "TYPICAL APPLICATIONS RAISED REFLECTIVE PAVEMENT MARKERS (SNOW-PLOW RESISTANT)" STANDARD DETAIL.

**PROPOSED LEFT TURN LANE STORAGE EXTENSION - DETAIL**



MODEL: Default  
 FILE: \\fs1\caw\benet\com\p\11001\Documents\DOT\_Offices\Drh\dr. 1\Projects\126822\CADD\Drawings\126822-ah-urban.dgn

REVISED SHEET 1/4/2024

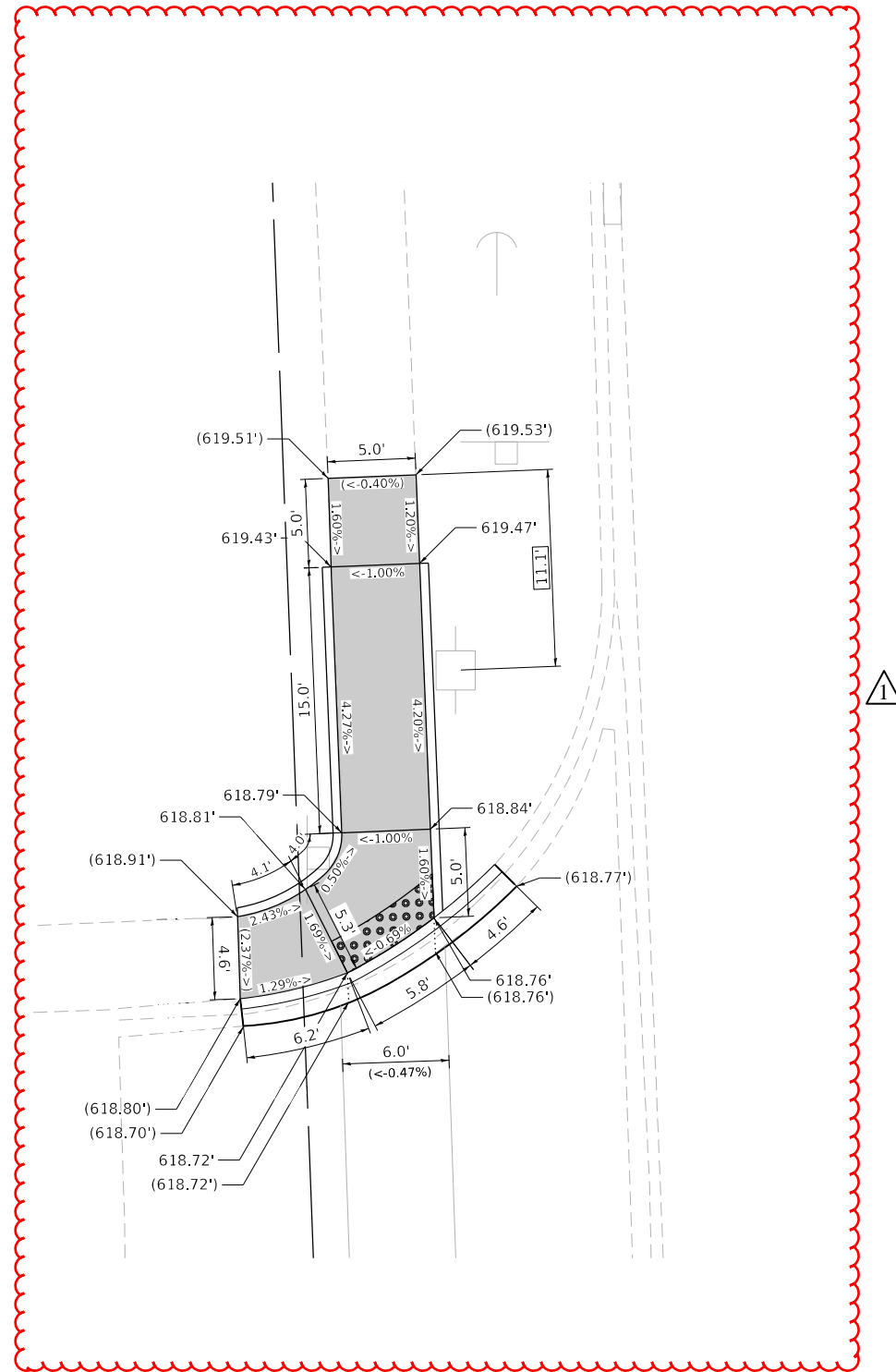
USER NAME = aya.elkhatib	DESIGNED -	REVISED -
	DRAWN -	REVISED -
PLOT SCALE = 100,0000' / in.	CHECKED -	REVISED -
PLOT DATE = 1/2/2024	DATE -	REVISED -

**STATE OF ILLINOIS**  
**DEPARTMENT OF TRANSPORTATION**

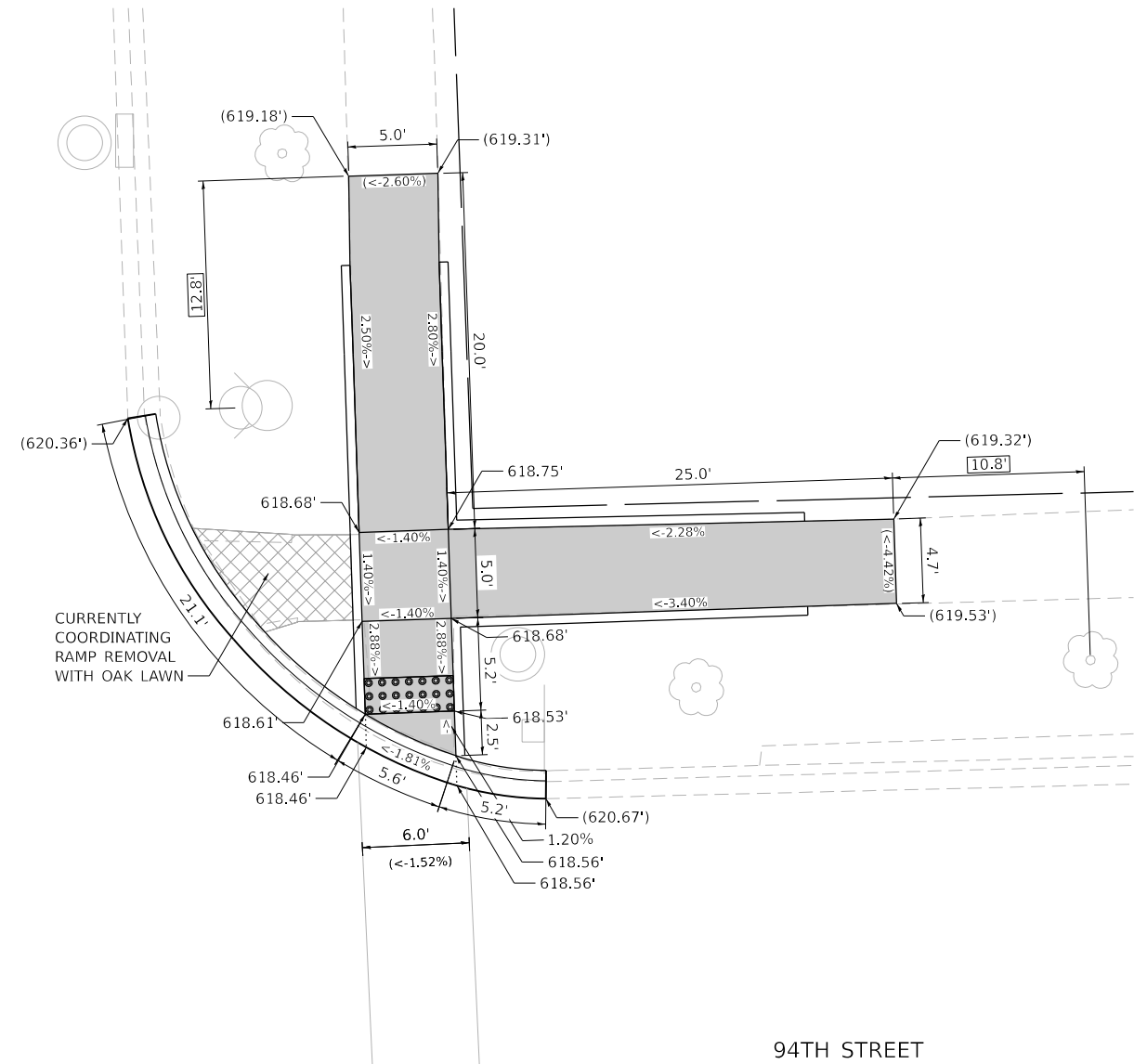
**ROADWAY AND PAVEMENT MARKING PLAN**  
**PULASKI ROAD (COLUMBUS AVE TO US 12 (95TH STREET))**  
 SCALE: 1"=50' SHEET OF SHEETS STA. TO STA.

F.A.P. RTE.	SECTION	COUNTY	TOTAL SHEETS	SHEET NO.
368	FAP 0368 22 RS	COOK	53	13
CONTRACT NO. 62T87				
ILLINOIS FED. AID PROJECT				

# ADA DETAILS FOR PHASE 1 PROJECTS



PULASKI ROAD



94TH STREET

REFERENCE BENCHMARK : ELEV. 619.533  
 BENCHMARK : CONTROL POINT CROSS ON CONCRETE LIGHT POLE FOUNDATION  
 LOCATION : 26.7' S OF CORNER AT SW CORNER  
 OF PULASKI ROAD AND 94TH STREET

### LEGEND

- |   |                          |  |  |
|---|--------------------------|--|--|
| <span style="border: 1px solid black; padding: 2px;">XX.X'</span> | EXISTING LENGTH          |  | PROPOSED SIDEWALK                            |
|   | PROPOSED SIDE CURB       |  | DETECTABLE WARNINGS                          |
| ( )   | EXISTING ELEVATION/SLOPE |  | SIDEWALK REMOVAL<br>REPLACE W/ TOPSOIL & SOD |



USER NAME = \$USERS	DESIGNED - JMM	REVISED -	REVISED -
	DRAWN - SVJ	REVISED -	
PLOT SCALE = \$SCALES	CHECKED - SMS	REVISED -	
PLOT DATE = \$DATES	DATE -	REVISED -	

**STATE OF ILLINOIS  
DEPARTMENT OF TRANSPORTATION**

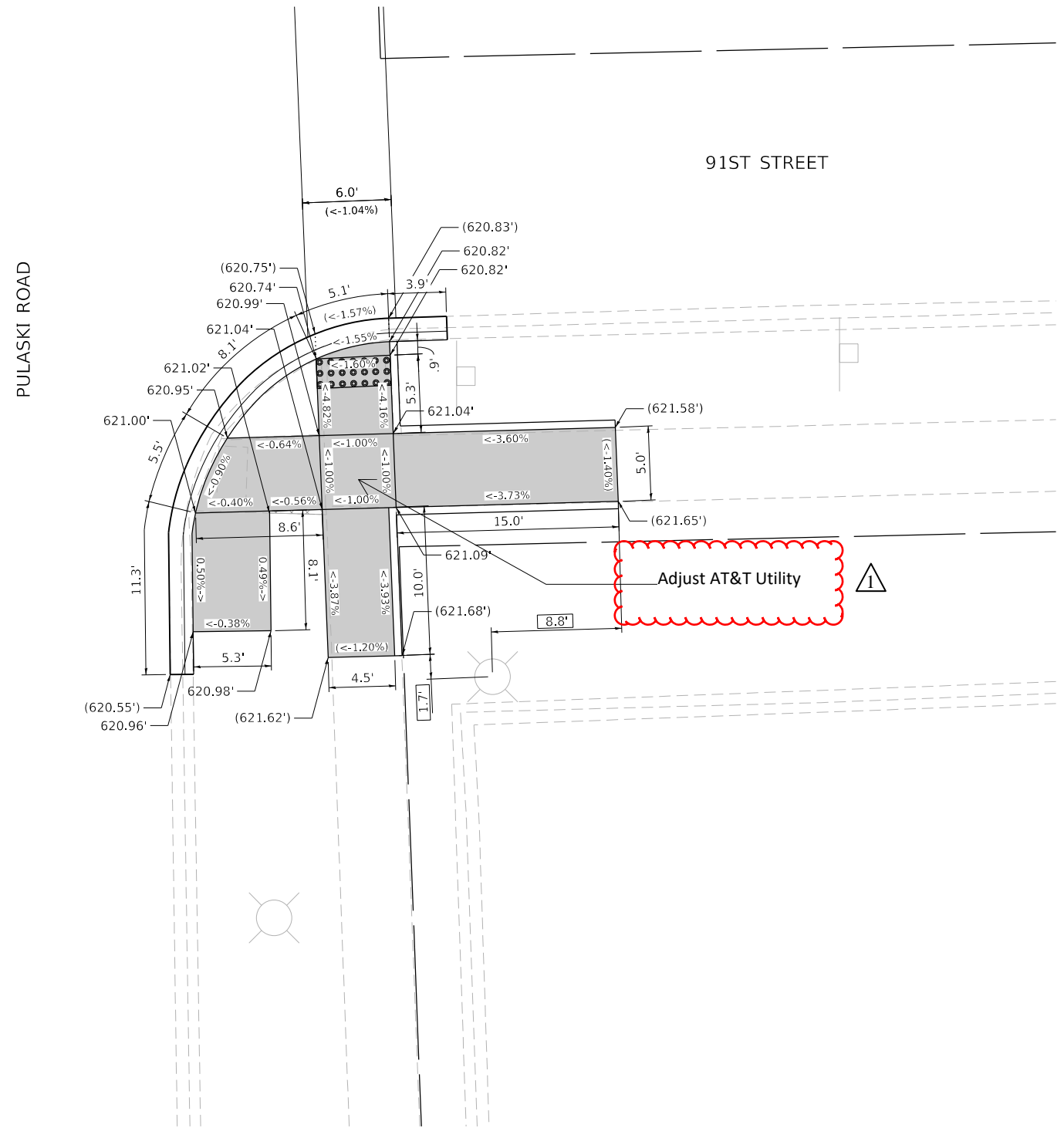
### ADA RAMP DETAIL PLAN PULASKI ROAD AND 94TH ST

SCALE: 1" = 5'    SHEET    OF    SHEETS    STA.    TO STA.

F.A.P. RTE. 368	SECTION FAP 0368 22 RS	COUNTY COOK	TOTAL SHEETS 53	SHEET NO. 17	INTERSECTION 61359 CONTRACT NO. 62T87 ILLINOIS FED. AID PROJECT
--------------------	---------------------------	----------------	--------------------	-----------------	---

REVISED SHEET 1/4/2024

# ADA DETAILS FOR PHASE 1 PROJECTS



LEGEND	
<span style="border: 1px solid black; padding: 2px;">XX.X'</span>	EXISTING LENGTH
<span style="border-bottom: 2px solid black; width: 20px; display: inline-block;"></span>	PROPOSED SIDE CURB
( )	EXISTING ELEVATION/SLOPE
<span style="background-color: #cccccc; width: 20px; height: 10px; display: inline-block;"></span>	PROPOSED SIDEWALK
<span style="background-color: #cccccc; width: 20px; height: 10px; display: inline-block; border: 1px dashed black;"></span>	DETECTABLE WARNINGS
<span style="background-color: #cccccc; width: 20px; height: 10px; display: inline-block; border: 1px dashed black; border-style: dotted;"></span>	SIDEWALK REMOVAL REPLACE W/ TOPSOIL & SOD

MODEL: 340BENMARKS  
FILE NAME: 31125



USER NAME = \$USERS	DESIGNED - JMM	REVISED -
	DRAWN - SVJ	REVISED -
PLOT SCALE = \$SCALE\$	CHECKED - SMS	REVISED -
PLOT DATE = \$DATES	DATE -	REVISED -

**STATE OF ILLINOIS  
DEPARTMENT OF TRANSPORTATION**

**ADA RAMP DETAIL PLAN  
PULASKI ROAD AND 91ST ST - OAK LAWN**

SCALE: 1" = 5'      SHEET      OF      SHEETS      STA.      TO      STA.

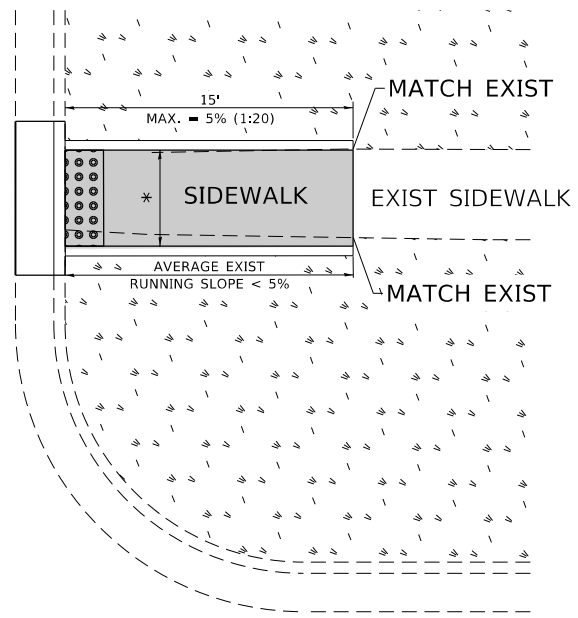
F.A.P. RTE.	SECTION	COUNTY	TOTAL SHEETS	SHEET NO.
368	FAP 0368 22 RS	COOK	53	24

INTERSECTION 64085  
 CONTRACT NO. 62T87  
 ILLINOIS FED. AID PROJECT

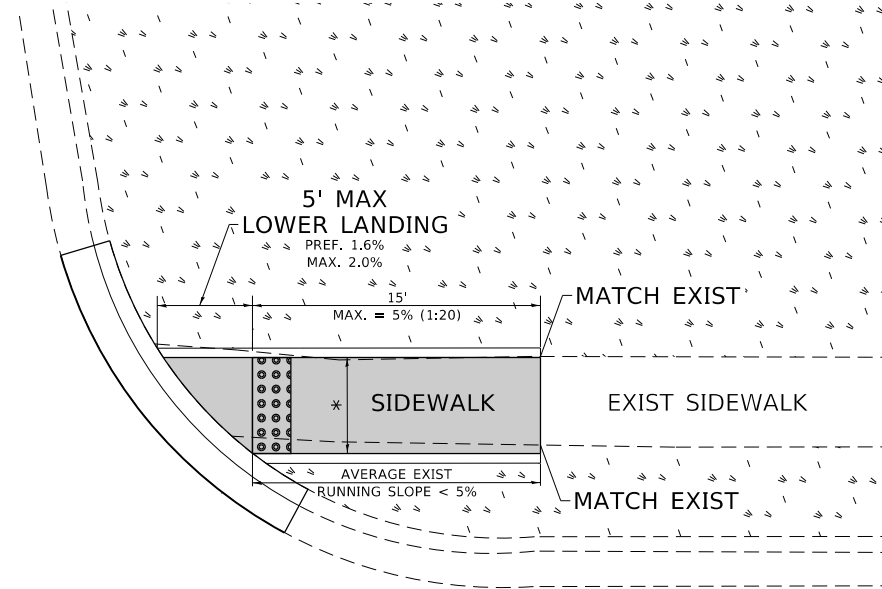
△ REVISED SHEET 1/4/2024

# ADA DETAIL FOR SINGLE PERPENDICULAR CURB RAMPS W/ EXIST. 5% OR LESS RUN. SLOPE

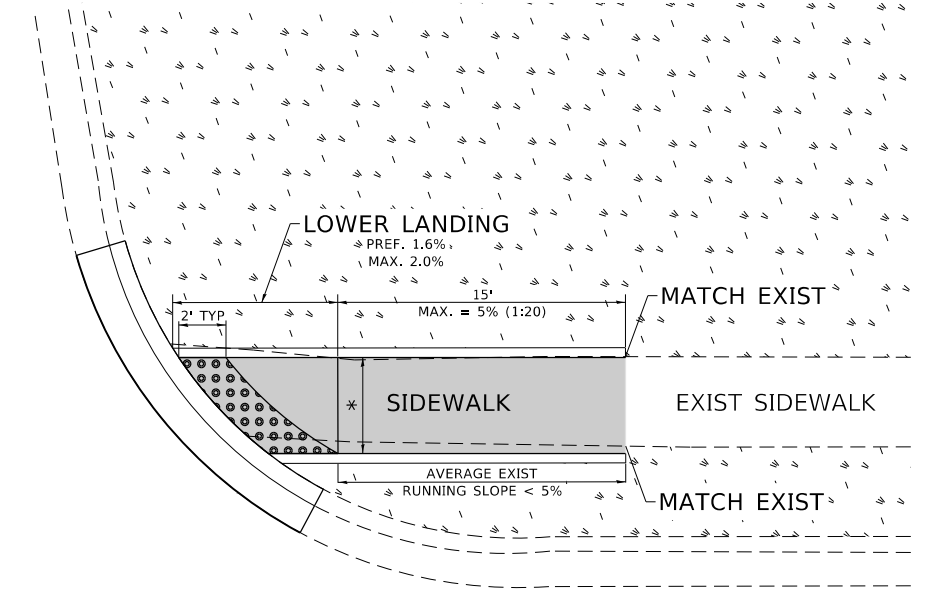
**PD-01A**



**PD-01B**



**PD-01C**



**LEGEND**

- PROPOSED SIDE CURB
- EXIST. GRASS
- PROPOSED SIDEWALK
- DETECTABLE WARNINGS

**CONSTRUCTION NOTES:**

- 1) ALL CROSS SLOPES ARE PREFERRED 1.6% (1:64), MAXIMUM 2% (1:50) EXCEPT WHEN TRANSITIONING TO EXISTING SIDEWALK
- \* MATCH EXISTING SIDEWALK WIDTH

REVISED ENTIRE SHEET 1/4/2024

MODEL: Default  
FILE: \public\paw.bentley.com\PI\DOT\Documents\DOT Office\D\h\dot. I\Projects\1126822\CADD\data\Detail\Detail.dgn

USER NAME = aya.elkhatib	DESIGNED -	REVISED -
DRAWN - R. LEDEZMA	CHECKED -	REVISIED -
PLOT SCALE = 100.0000' / in.	DATE - 10/02/2019	REVISIED -
PLOT DATE = 1/2/2024		

**STATE OF ILLINOIS  
DEPARTMENT OF TRANSPORTATION**

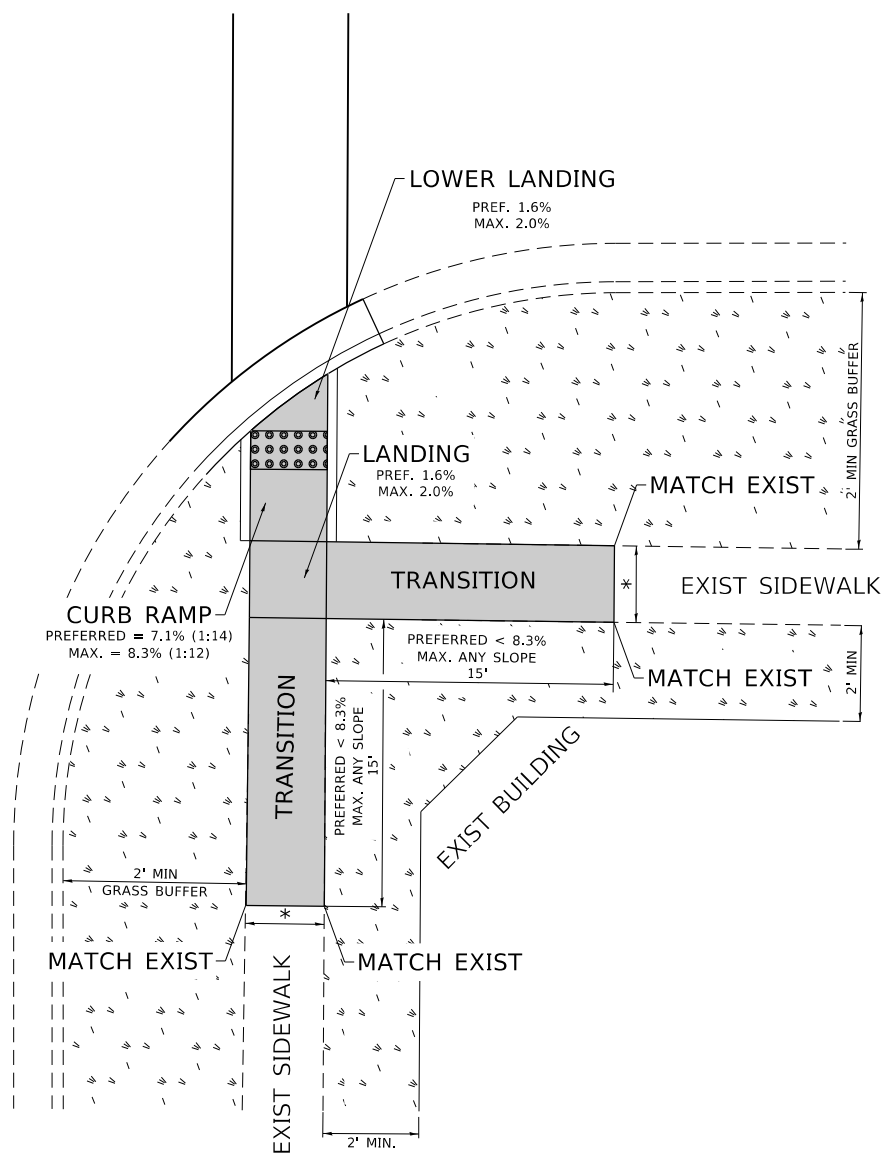
**PROJECT DETAIL FOR SINGLE PERPENDICULAR CURB RAMPS  
(PD-01)**

SCALE: NONE    SHEET    OF    SHEETS    STA.    TO    STA.

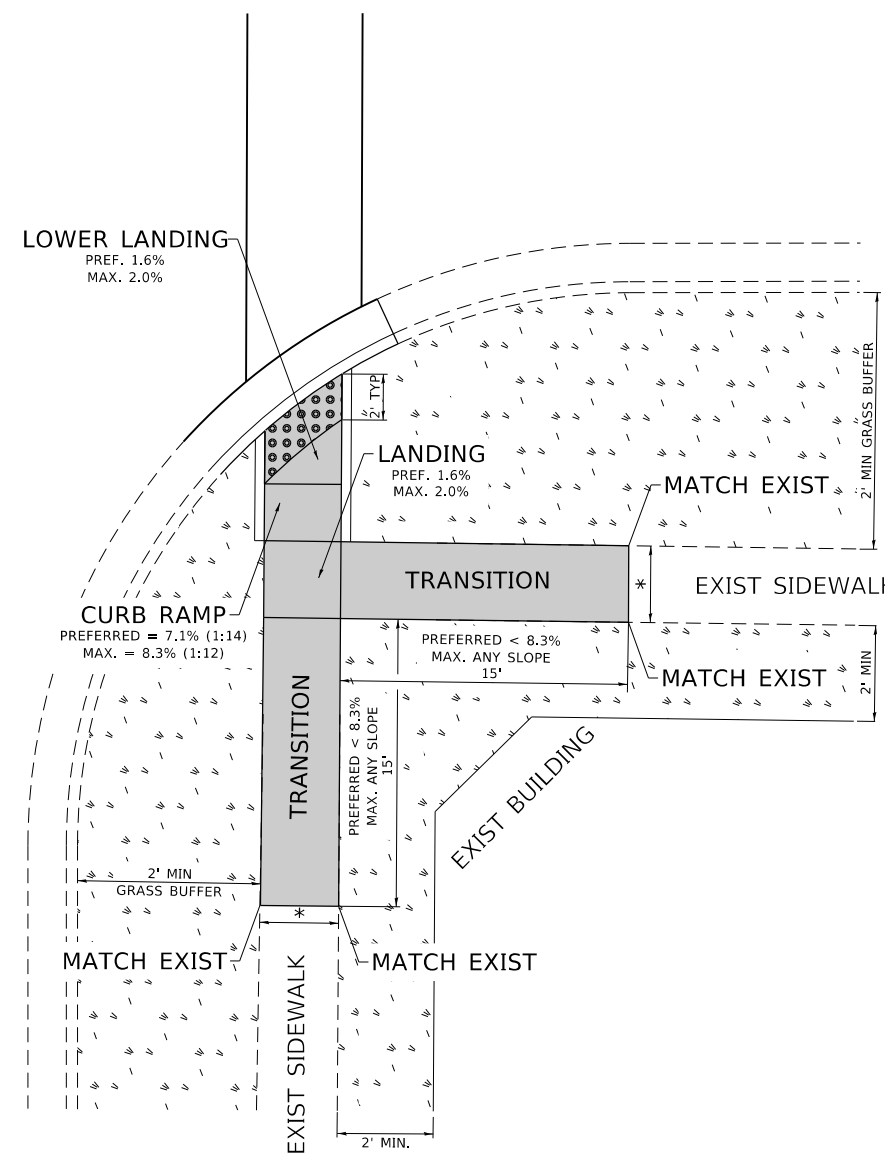
F.A.P. RTE. 368	SECTION FAP 0368 22 RS	COUNTY COOK	TOTAL SHEETS 53	SHEET NO. 53A
PD-01		CONTRACT NO. 62T87		
ILLINOIS FED. AID PROJECT				

# ADA DETAIL FOR SINGLE PERPENDICULAR CURB RAMPS W/ TURNING SPACE

**PD-04A**



**PD-04B**



**LEGEND**

- EXIST. GRASS
- PROPOSED SIDEWALK
- DETECTABLE WARNINGS
- PROPOSED SIDE CURB

**CONSTRUCTION NOTES:**

- 1) ALL CROSS SLOPES ARE PREFERRED 1.6% (1:64), MAXIMUM 2% (1:50) EXCEPT WHEN TRANSITIONING TO EXISTING SIDEWALK
- \* MATCH EXISTING SIDEWALK WIDTH

**REVISED ENTIRE SHEET 1/4/2024**

MODEL: Default  
FILE: \\fs1\caw.bentley.com\PI\DOT\Documents\DOT Office\Dhrdet\_1\Projects\126822\CAD\data\Drawn\DRF54.dgn

USER NAME = aya.elkhatib	DESIGNED -	REVISED -
	DRAWN - R. LEDEZMA	REVISED -
PLOT SCALE = 100.0000' / in.	CHECKED -	REVISED -
PLOT DATE = 1/2/2024	DATE - 10/02/2019	REVISED -

**STATE OF ILLINOIS  
DEPARTMENT OF TRANSPORTATION**

**PROJECT DETAIL FOR SINGLE PERPENDICULAR CURB RAMPS WITH  
TURNING SPACE (PD-04)**

SCALE: NONE    SHEET    OF    SHEETS    STA.    TO    STA.

F.A.P. RTE. 368	SECTION FAP 0368 22 RS	COUNTY COOK	TOTAL SHEETS 53	SHEET NO. 53B
PD-04		CONTRACT NO. 62T87		
ILLINOIS FED. AID PROJECT				