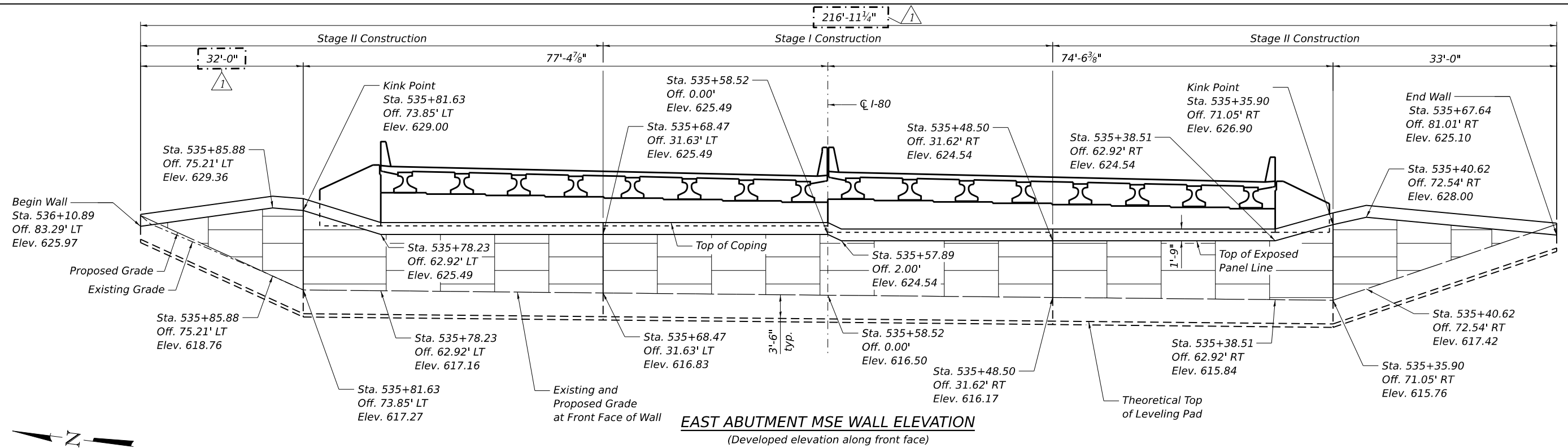
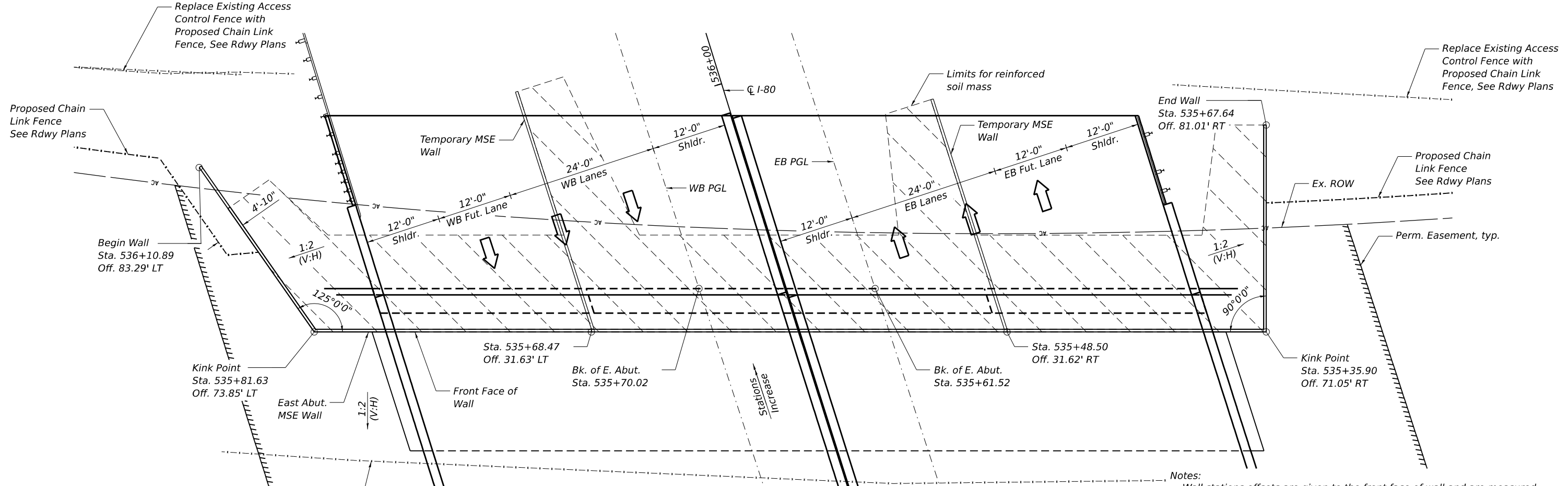


MODEL: Drawing
 FILE NAME: p:\transystems-pw\l-hosted\Documents\Projects_2018\CH401\401180022\02-TransSystems\CAD\62R89\Sheets\23-Structural\099-8320 & 099-8321\0998320-62R89-041-East_MSE_P&E.dgn



EAST ABUTMENT MSE WALL ELEVATION
 (Developed elevation along front face)



EAST ABUTMENT MSE WALL PLAN

Notes:
 Wall stations offsets are given to the front face of wall and are measured from the CL of I-80.
 Horizontal dimensions measured along front face of precast panels.
 Contractor shall coordinate MSE retaining wall construction with abutment construction. Piles are to be driven prior to MSE retaining wall construction.
 See sheet S1-42 of S1-50 for additional details.
 For Temporary Sheet Piling details and Temporary MSE Wall Details, See Sheet S1-10 of S1-50.

REVISED SHEET 1/4/2024



USER NAME =	tjallen	DESIGNED -	IS	REVISED -	12/20/2024 TJA
CHECKED -	TJA	REVISIONS -			
PLOT SCALE =		DRAWN -	IS	REVISIONS -	
PLOT DATE =	1/3/2024	CHECKED -	TJA	REVISIONS -	

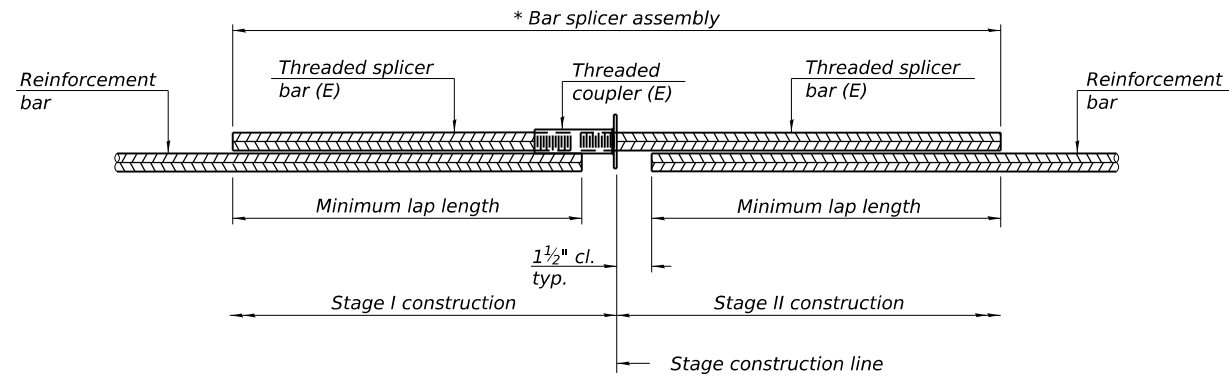
STATE OF ILLINOIS
 DEPARTMENT OF TRANSPORTATION

EAST MSE WALL PLAN AND ELEVATION
 STRUCTURE NOS. 099-8320 (EB) & 099-8321 (WB)

SHEET S1-41 OF S1-50 SHEETS

F.A.I. RTE.	SECTION	COUNTY	TOTAL SHEETS	SHEET NO.
I-80	FAI 80 22 BR	WILL	1201	647
CONTRACT NO. 62R89				
ILLINOIS		FED. AID PROJECT		

MODEL: Drawing-1
 FILE NAME: p:\trainsystems-pw\benley.com\trainsystems-pw\hosted\Documents\Projects_2018\CH401\401180022\02-TransSystems\CAD\62R89\Sheets\23-Structural\099-0761-62R89-007-4-Bar Splicer Assembly and Mechanical Splicer Details



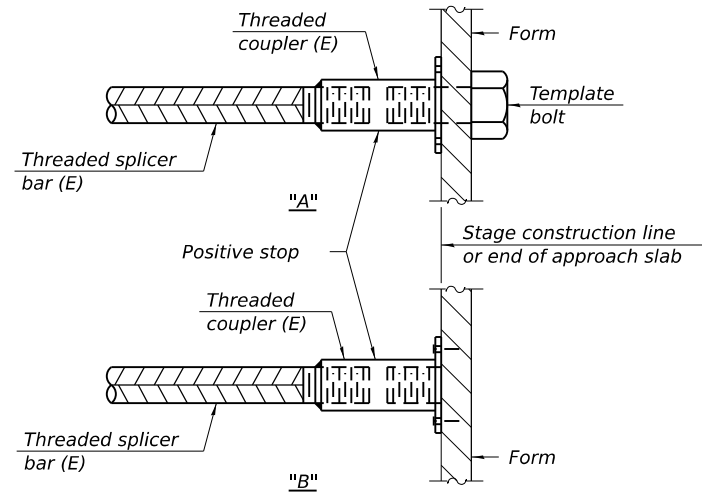
STANDARD BAR SPLICER ASSEMBLY PLAN

Only bar splicer assemblies as presented on the approved QPL list may be used.

Threaded splicer bar length = min. lap length + 1 1/2" + thread length

* Epoxy not required on Bar Splicer Assembly components used in conjunction with black bars.

Location	Bar size	No. assemblies required	Minimum lap length
Top Slab	#5	40	2'-2"
Bottom Slab	#5	40	2'-2"
Walls	#4	15	1'-9"

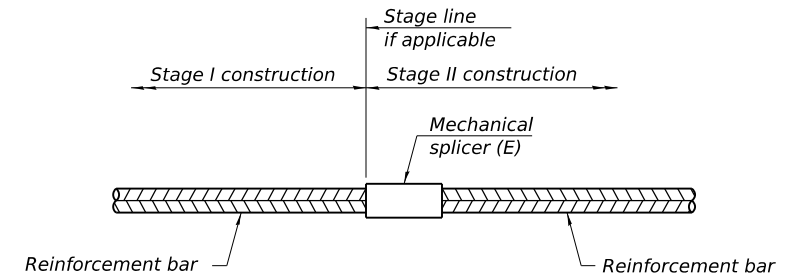


INSTALLATION AND SETTING METHODS

"A" : Set bar splicer assembly by means of a template bolt.

"B" : Set bar splicer assembly by nailing to wood forms or cementing to steel forms.

(E) : Indicates epoxy coating.



STANDARD MECHANICAL SPLICER

Location	Bar size	No. assemblies required

NOTES:

- Splicer bars shall be deformed with threaded ends and have a minimum 60 ksi yield strength.
- All reinforcement shall be lapped and tied to the splicer bars.
- Bar splicer assemblies shall be epoxy coated according to the requirements for reinforced bars. See Section 508 of the Standard Specifications.
- See approved list of bar splicer assemblies and mechanical splicers for alternatives.



USER NAME = tjallen	DESIGNED - IIP	REVISION 12/20/2023 TJA
	CHECKED - JE	REVISION -
PLOT SCALE =	DRAWN - IIP	REVISION -
PLOT DATE = 12/19/2023	CHECKED - JE	REVISION -

STATE OF ILLINOIS
 DEPARTMENT OF TRANSPORTATION

BAR SPLICER ASSEMBLY AND MECHANICAL SPLICER DETAILS
 STRUCTURE NO. 099-0761

SHEET 55-07 OF 55-08 SHEETS

F.A.I. RTE.	SECTION	COUNTY	TOTAL SHEETS	SHEET NO.
I-80	FAI 80 22 BR	WILL	1201	766
			CONTRACT NO. 62R89	
		ILLINOIS	FED. AID PROJECT	