

STATE OF ILLINOIS 01-19-2024 LETTING ITEM 145
 DEPARTMENT OF TRANSPORTATION

F.A.S. RTE.	SECTION	COUNTY	TOTAL SHEETS	SHEET NO.
1707	ICX-BJB	CLARK	52*	1
ILLINOIS			CONTRACT NO. 74562	
* 52 + 1 = 53 TOTAL SHEETS				

D-97-024-12

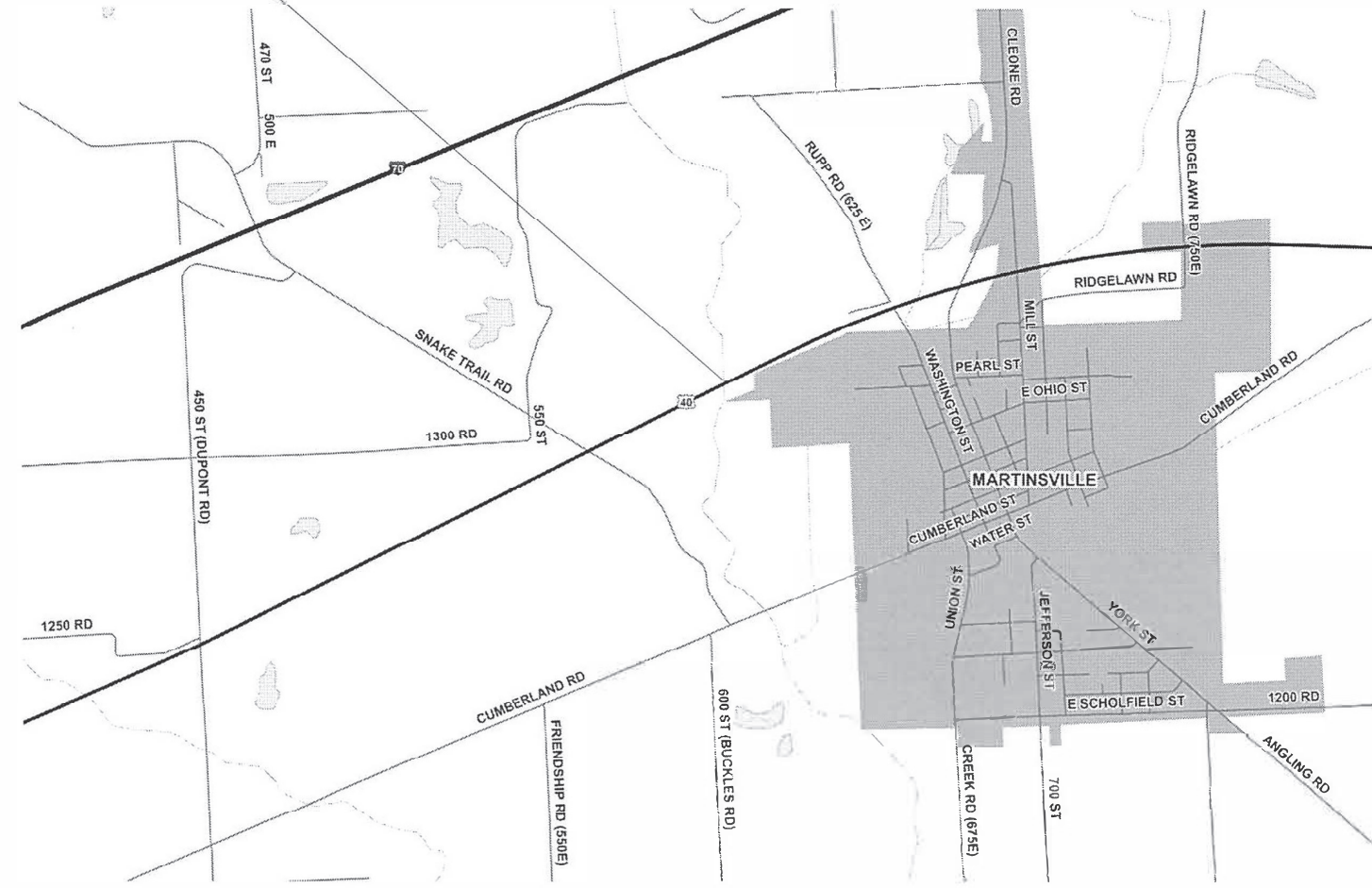
FOR INDEX OF SHEETS, SEE SHEET NO. 2

PROPOSED HIGHWAY PLANS

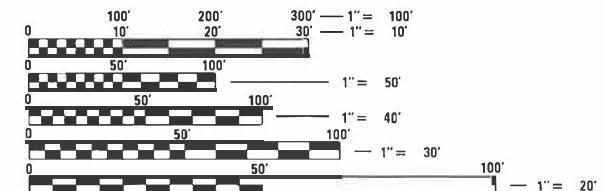
FAS ROUTE 1707 (US 40)
 SECTION (CX-B)B
 PROJECT HBFP-878Z(533)
 BRIDGE REPLACEMENT
 CLARK COUNTY

C-97-039-12

LOCATION OF PROPOSED IMPROVEMENT



GROSS LENGTH = 295 FT. = 0.056 MILE
 NET LENGTH = 295 FT. = 0.056 MILE



FULL SIZE PLANS HAVE BEEN PREPARED USING STANDARD ENGINEERING SCALES. REDUCED SIZED PLANS WILL NOT CONFORM TO STANDARD SCALES. IN MAKING MEASUREMENTS ON REDUCED PLANS, THE ABOVE SCALES MAY BE USED.

J.U.L.I.E.
 JOINT UTILITY LOCATION INFORMATION FOR EXCAVATORS
 1-800-892-0123
 OR 811

PROJECT ENGINEER BRIAN LEWIS
 PROJECT MANAGER BRIAN LEWIS

CONTRACT NO. 74562

STATE OF ILLINOIS
 DEPARTMENT OF TRANSPORTATION

SUBMITTED August 23, 2023
Jeffrey P. Myerles
 REGIONAL ENGINEER

October 13, 2023
John A. Elk
 ENGINEER OF DESIGN AND ENVIRONMENT

October 13, 2023
Steph M. Lewis
 DIRECTOR OF HIGHWAYS PROJECT IMPLEMENTATION

PRINTED BY THE AUTHORITY
 OF THE STATE OF ILLINOIS

GENERAL NOTES

THIS PROJECT IS LOCATED ON US 40 IN CLARK COUNTY, 0.6 MI WEST OF WASHINGTON ST IN MARTINSVILLE OVER EMBARRAS RIVER. THE WORK INCLUDED IN SECTION (CX-B)B CONSISTS OF COMPLETE STRUCTURE REPLACEMENT.

ONE NEW PERMANENT SURVEY MARKER SHALL BE CAST-IN-PLACE IN A WINGWALL OF THE NEW NEW STRUCTURE.

THE QUANTITY OF CHANNEL EXCAVATION INCLUDES ALL EXCAVATION NECESSARY FOR PLACEMENT OF RIPRAP ACCORDING TO THE DETAILS SHOWN IN THE STRUCTURE PLANS.

MATERIAL FOR AGGREGATE SHOULDER, TYPE A SHALL BE CRUSHED STONE OR CRUSHED CONCRETE.

WHEN APPLYING SHORT TERM PAVEMENT MARKINGS, TEMPORARY TAPE SHALL BE USED ON THE SURFACE COURSES AND PAINT SHALL BE USED ON MILLED SURFACES.

PIPE UNDERDRAINS FOR STRUCTURES SHALL EXTEND TO THE BOTTOM OF THE EMBANKMENT SLOPE AND TERMINATE WITH A CONCRETE HEADWALL.

THE LOCATIONS AND/OR DEPTHS OF UNDERGROUND UTILITIES SHOWN HAVE BEEN TAKEN FROM INFORMATION FURNISHED BY THE UTILITY OWNERS AND MUST BE CONSIDERED APPROXIMATE. FIELD MARKINGS OF FACILITIES IN CRITICAL AREAS MAY BE OBTAINED BY PROVIDING. MINIMUM OF FORTY-EIGHT (48) HOURS ADVANCE NOTICE THROUGH THE J.U.L.I.E. SYSTEM BY CALLING 800-892-0123.

APPLICATION RATES

THE FOLLOWING APPLICATION RATES WERE USED IN CALCULATING PLAN QUANTITIES AND HAVE BEEN INCLUDED FOR REFERENCE:

BITUMINOUS MATERIALS (TACK COAT)	0.05 LB/SQ FT (ON MILLED SURFACES) 0.025 LB/SQ FT (ON HMA LIFTS)
RIP-RAP	1.485 TONS/CU YD
AGGREGATE SURFACE COURSE AND SHOULDER	2.05 TON/CU YD

MIXTURE REQUIREMENTS

THE FOLLOWING MIXTURE REQUIREMENTS ARE APPLICABLE TO THIS PROJECT:

LOCATION(S)	MIXTURE USE(S)	PG	DESIGN AIR VOIDS	MIXTURE COMPOSITION	FRICTION AGGREGATE	MIXTURE WEIGHT	QUALITY MANAGEMENT PROGRAM	SUBLOT SIZE	MATERIAL TRANSFER DEVICE (REQUIRED?)
MAINLINE	HMA SURFACE COURSE, IL-9.5, MIX "C", N70	PG 64-22	4.0% @ N=70	IL - 9.5	MIXTURE C	N70	QC/QA	3000	N/A
MAINLINE	HMA BINDER COURSE, IL-19.0, N70	PG 64-22	4.0% @ N=70	IL - 19.0	N/A	N70	QC/QA	3000	N/A
DETOUR	HMA SURFACE COURSE, IL-9.5, MIX "C", N70	PG 64-22	4.0% @ N=70	IL - 9.5	MIXTURE C	N70	QC/QA	3000	N/A

INDEX OF SHEETS

SHEET NO.	ITEM
1	COVER SHEET
2	INDEX OF SHEETS, LIST OF STANDARDS, AND GENERAL NOTES
3-4	SUMMARY OF QUANTITIES
5	TYPICAL SECTIONS
6	SCHEDULE OF QUANTITIES
7	PLAN AND PROFILE SHEET
8-39	STRUCTURE PLANS
40-43A	DETOUR SIGNING
44	PAVING DETAIL
45-52	CROSS SECTION SHEETS

THE FOLLOWING STANDARDS ARE A PART OF THESE PLANS AND ARE INCLUDED AFTER SHEET NO. 52:

STANDARD NO.	DESCRIPTION
000001-08	STANDARD SYMBOLS, ABBREVIATIONS AND PATTERNS
001001-02	AREAS OF REINFORCEMENT BARS
001006	DECIMAL OF AN INCH AND OF A FOOT
420001-10	PAVEMENT JOINTS
420401-13	PAVEMENT CONNECTOR (PCC) FOR BRIDGE APPROACH SLAB
420701-03	PAVEMENT WELDED WIRE REINFORCEMENT
515001-04	NAME PLATE FOR BRIDGES
601001-05	PIPE UNDERDRAINS
601101-02	CONCRETE HEADWALL FOR PIPE UNDERDRAIN
630001-13	STEEL PLATE BEAM GUARDRAIL
630301-09	SHOULDER WIDENING FOR TYPE 1 (SPECIAL) GUARDRAIL TERMINALS
631031-18	TRAFFIC BARRIER TERMINAL, TYPE 6
667101-02	PERMANENT SURVEY MARKERS
701001-02	OFF-ROAD OPERATIONS, 2L, 2W, MORE THAN 15' AWAY
701006-05	OFF-ROAD OPERATIONS, 2L, 2W, 15' TO 24' FROM PAVEMENT EDGE
701011-04	OFF-ROAD MOVING OPERATIONS, 2L, 2W, DAY ONLY
701011-04	OFF-ROAD MOVING OPERATIONS, 2L, 2W, DAY ONLY
701301-04	LANE CLOSURE, 2L, 2W, SHORT TIME OPERATIONS
701306-04	LANE CLOSURE, 2L, 2W, SLOW MOVING OPERATIONS DAY ONLY, FOR SPEEDS >=
701311-03	45 LANE CLOSURE, 2L, 2W, MOVING OPERATIONS - DAY ONLY
701901-09	TRAFFIC CONTROL DEVICES
725001-01	OBJECT AND TERMINAL MARKERS
780001-05	TYPICAL PAVEMENT MARKINGS
782006-01	GUARDRAIL AND BARRIER WALL REFLECTOR MOUNTING DETAILS
BLR 21-9	TYPICAL APPLICATION OF TRAFFIC CONTROL DEVICES FOR CONSTRUCTION ON RURAL LOCAL HIGHWAYS

1 REVISED SHEET 1-3-2024

MODEL NUMBER: MAMES
FILE NAME: 811213

USER NAME = SUSERS	DESIGNED -	REVISED -	STATE OF ILLINOIS DEPARTMENT OF TRANSPORTATION	GENERAL NOTES & INDEX OF SHEET				F.A.S. RTE.	SECTION	COUNTY	TOTAL SHEETS	SHEET NO.		
PLOT SCALE = SCALES	DRAWN -	REVISED -		SCALE: GENERAL N	SHEET	OF	SHEETS	STA.	TO STA.	1707	(CX-B)B	CLARK	52	2
PLOT DATE = SDATES	CHECKED -	REVISED -									CONTRACT NO. 74562			
	DATE -	REVISED -									ILLINOIS FED. AID PROJECT			

80% FED
20% STATE

80% FED
20% STATE

SUMMARY OF QUANTITIES			TOTAL QUANTITIES	CONSTRUCTION TYPE CODE		
CODE NO	ITEM	UNIT		0010		
20300100	CHANNEL EXCAVATION	CU YD	6782	6782		
28100109	STONE RIPRAP, CLASS A5	SO YD	2032	2032		
28200200	FILTER FABRIC	SO YD	2032	2032		
40600290	BITUMINOUS MATERIALS (TACK COAT)	POUND	4062	4062		
40600990	TEMPORARY RAMP	SQ YD	27	27		⚠
40603085	HOT-MIX ASPHALT BINDER COURSE, IL-19.0, N70	TON	169	169		
40604052	HOT-MIX ASPHALT SURFACE COURSE, IL-9.5, MIX "C", N70	TON	676	676		⚠
42000060	WELDED WIRE REINFORCEMENT	SO YD	123	123		
42000080	PAVEMENT CONNECTOR (PCC) FOR BRIDGE APPROACH SLAB	SO YD	168	168		
42001300	PROTECTIVE COAT	SO YD	1554	1554		
44000100	PAVEMENT REMOVAL	SO YD	574	574		
44000155	HOT-MIX ASPHALT SURFACE REMOVAL, 1 1/2"	SO YD	7968	7968		⚠
48100100	AGGREGATE SHOULDERS, TYPE A	TON	540	540		
50100100	REMOVAL OF EXISTING STRUCTURES	EACH	1	1		

SUMMARY OF QUANTITIES			TOTAL QUANTITIES	CONSTRUCTION TYPE CODE		
CODE NO	ITEM	UNIT		0010		
50104650	SLOPE WALL REMOVAL	SO YD	1240	1240		
50200100	STRUCTURE EXCAVATION	CU YD	287	287		
50300100	FLOOR DRAINS	EACH	26	26		
50300225	CONCRETE STRUCTURES	CU YD	154.8	154.8		
50300255	CONCRETE SUPERSTRUCTURE	CU YD	401.4	401.4		
50300300	PROTECTIVE COAT	SO YD	1554	1554		
50500105	FURNISHING AND ERECTING STRUCTURAL STEEL	L SUM	1	1		
50500505	STUD SHEAR CONNECTORS	EACH	4536	4536		
50800205	REINFORCEMENT BARS, EPOXY COATED	POUND	116470	116470		
51200963	FURNISHING METAL SHELL PILES 16" X 0.375"	FOOT	1369	1369		
51202305	DRIVING PILES	FOOT	1369	1369		
51203200	TEST PILE METAL SHELLS	EACH	2	2		
51204650	PILE SHOES	EACH	32	32		
51500100	NAME PLATES	EACH	1	1		

⚠ REVISED 1-3-2024

REV. - MS

MODEL: D:\default... FILE NAME: p:\... PROJECTS\74562\CADD\DATA\CAD\Sheets\DOT\74562-SP-500.dgn

USER NAME = jessica.hille	DESIGNED -	REVISED -
PLOT SCALE = 100.0000' / in.	DRAWN -	REVISED -
PLOT DATE = 8/23/2023	CHECKED -	REVISED -
	DATE -	REVISED -

STATE OF ILLINOIS
DEPARTMENT OF TRANSPORTATION

SUMMARY OF QUANTITIES

SCALE: SHEET OF SHEETS STA. TO STA.

F.A.S. RTE.	SECTION	COUNTY	TOTAL SHEETS	SHEET NO.
1707	(CX-B)B	CLARK	52	3
CONTRACT NO. 74562			ILLINOIS FED. AID PROJECT	

80% FED
20% STATE

80% FED
20% STATE

SUMMARY OF QUANTITIES			TOTAL QUANTITIES	CONSTRUCTION TYPE CODE		
CODE NO	ITEM	UNIT		0010		
52000110	PREFORMED JOINT STRIP SEAL	FOOT	73	73		
52100520	ANCHOR BOLTS, 1"	EACH	48	48		
58600101	GRANULAR BACKFILL FOR STRUCTURES	CU YD	148	148		
60100060	CONCRETE HEADWALLS FOR PIPE DRAINS	EACH	4	4		
60146304	PIPE UNDERDRAINS FOR STRUCTURES 4"	FOOT	157	157		
60500060	REMOVING INLETS	EACH	4	4		
* 63100085	TRAFFIC BARRIER TERMINAL, TYPE 6	EACH	4	4		
63200310	GUARDRAIL REMOVAL	FOOT	328	328		
* 63301210	REMOVE AND REERECT STEEL PLATE BEAM GUARDRAIL, TYPE A	FOOT	819	819		
* 63301990	REMOVE AND REERECT TRAFFIC BARRIER TERMINALS, TYPE 1	EACH	2	2		
66700205	PERMANENT SURVEY MARKERS, TYPE I	EACH	1	1		
67000400	ENGINEER'S FIELD OFFICE, TYPE A	CAL MO	10	10		
67100100	MOBILIZATION	L SUM	1	1		
70107025	CHANGEABLE MESSAGE SIGN	CAL DA	14	14		

SUMMARY OF QUANTITIES			TOTAL QUANTITIES	CONSTRUCTION TYPE CODE		
CODE NO	ITEM	UNIT		0010		
* 78001110	PAINT PAVEMENT MARKING - LINE 4"	FOOT	7855	7855		
X5030250	BRIDGE DECK GROOVING (LONGITUDINAL)	SQ YD	941	941		
X5040101	FULL DEPTH PRECAST BRIDGE APPROACH SLAB	SQ FT	1804	1804		
X7011800	TRAFFIC CONTROL AND PROTECTION, STANDARD BLR 21	L SUM	1	1		
Z0001495	BRIDGE APPROACH SHOULDER REMOVAL	SQ YD	33.1	33.1		
Z0004552	APPROACH SLAB REMOVAL	SQ YD	137	137		
Z0016702	DETOUR SIGNING	L SUM	1	1		
Z0018002	DRAINAGE SCUPPERS, DS-11	EACH	8	8		
Z0029090	DIAMOND GRINDING (BRIDGE SECTION)	SQ YD	1239	1239		
Z0070150	REMOVE AND RELOCATE EXISTING MONUMENT	EACH	1	1		
70100460	TRAFFIC CONTROL AND PROTECTION, STANDARD 701306	L SUM	1	1		
70300100	SHORT TERM PAVEMENT MARKING	FOOT	236	236		
70300150	SHORT TERM PAVEMENT MARKING REMOVAL	SQ FT	79	79		

* SPECIALTY ITEM

△ REVISED 1-3-2024

REV. - MS

MODEL: Default
FILE NAME: p:\w\l\g\p\w\h\entier.com\P\W\DOT\Documents\DOT Offices\District 3\Projects\74562\CADD\data\CAD\sheet\074562-91-S00.dgn

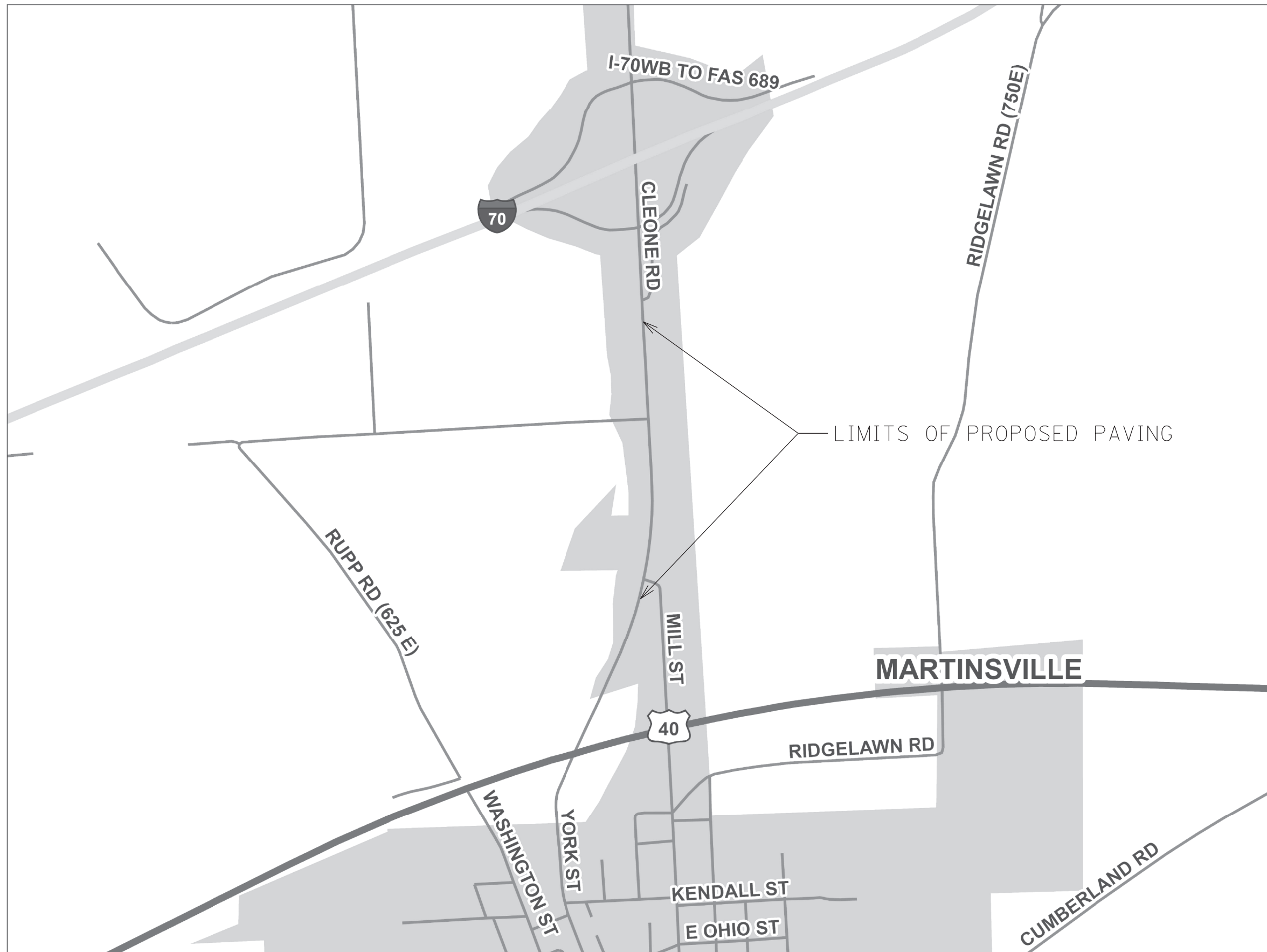
USER NAME = jessica.hille	DESIGNED -	REVISED -
PLOT SCALE = 100.0000' / in.	DRAWN -	REVISED -
PLOT DATE = 8/23/2023	CHECKED -	REVISED -
	DATE -	REVISED -

STATE OF ILLINOIS
DEPARTMENT OF TRANSPORTATION

SUMMARY OF QUANTITIES

SCALE: SHEET OF SHEETS STA. TO STA.

F.A.S. RTE.	SECTION	COUNTY	TOTAL SHEETS	SHEET NO.
1707	(CX-B)B	CLARK	52	4
CONTRACT NO. 74562			ILLINOIS FED. AID PROJECT	



LIMITS OF PROPOSED PAVING

MARTINSVILLE

▲ SHEET ADDED 1-3-2024

NOTE: SEE SHEET 44 FOR QUANTITIES

MODEL NAME: MAMMS
FILE NAME: 311213

USER NAME = SUSERS	DESIGNED -	REVISED -
	DRAWN -	REVISED -
PLOT SCALE = 5SCALES	CHECKED -	REVISED -
PLOT DATE = SDATES	DATE -	REVISED -

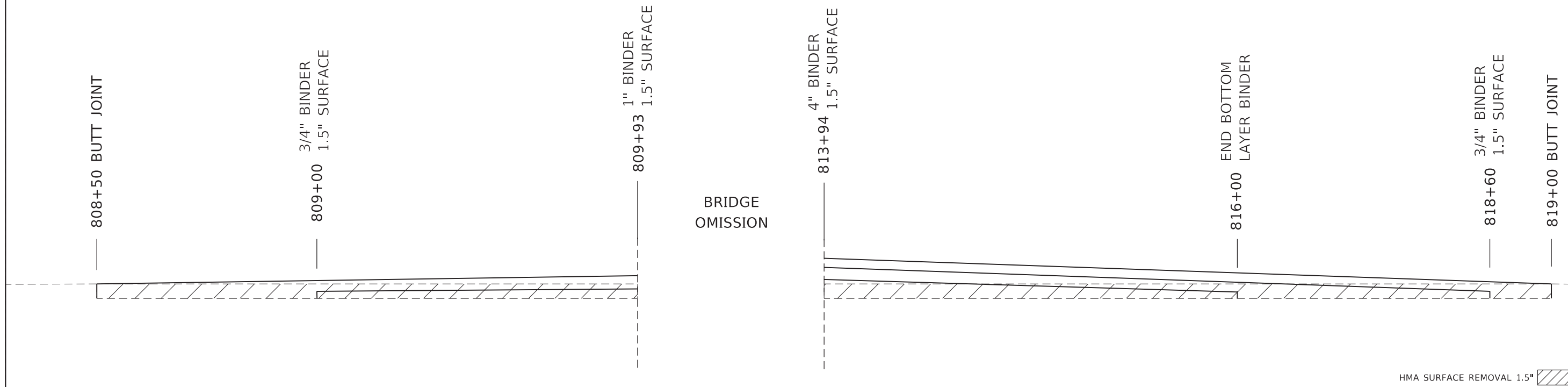
STATE OF ILLINOIS
DEPARTMENT OF TRANSPORTATION

DETOUR ROUTE PAVING

SCALE: SHEET OF SHEETS STA. TO STA.

F.A.S. RTE.	SECTION	COUNTY	TOTAL SHEETS	SHEET NO.
1707	(CX-B)B	Clark	52	43A
CONTRACT NO. 74562				
ILLINOIS FED. AID PROJECT				

PAVING DETAILS



HMA SURFACE REMOVAL 1.5"

DETOUR PAVING QUANTITIES

Item	Quantity	Unit
HMA SURFACE REMOVAL 1.5"	6240	SQ YD
BITUMINOUS MATERIALS (TACK COAT)	2808	LB
HMA SURFACE COURSE, IL-9.5, MIX "C", N70	524	TON
SHORT-TERM PAVEMENT MARKING	236	FOOT
SHORT-TERM PAVEMENT MARKING REMOVAL	79	SQ FT
PAINT PAVEMENT MARKING LINE 4"	5265	FOOT
TEMPORARY RAMP	27	SQ YD
TRAFFIC CONTROL & PROTECTION STD 701306	1	L SUM

REVISED SHEET 1-3-2024

MODEL NAME: MAMES
FILE NAME: PAVING

USER NAME = SUSERS	DESIGNED -	REVISED -	STATE OF ILLINOIS DEPARTMENT OF TRANSPORTATION	PAVING DETAIL			F.A.S. RTE. 1707	SECTION (CX-B)B	COUNTY Clark	TOTAL SHEETS 52	SHEET NO. 44
PLOT SCALE = SCALES	DRAWN -	REVISED -		SCALE:	SHEET	OF	SHEETS	STA.	TO	STA.	ILLINOIS FED. AID PROJECT
PLOT DATE = SDATES	CHECKED -	REVISED -		CONTRACT NO. 74562							
	DATE -	REVISED -									