

GENERAL NOTES:

Fasteners shall be ASTM A325 Type 1, ~~mechanically~~ hot dip galvanized bolts, Bolts 7/8" Ø, holes 1 1/8" Ø, unless otherwise noted.

Calculated weight of Structural Steel = 42,750 lbs.

All structural steel shall be AASHTO M 270 Grade 50.

** All structural steel shall be galvanized per ASTM A123/A123M-13 and AASHTO M111. See Special Provisions for Hot-Dip Galvanizing for Structural Steel.

Painting of galvanized structural steel is NOT specified for this project.

No field welding is permitted except as specified in the contract documents.

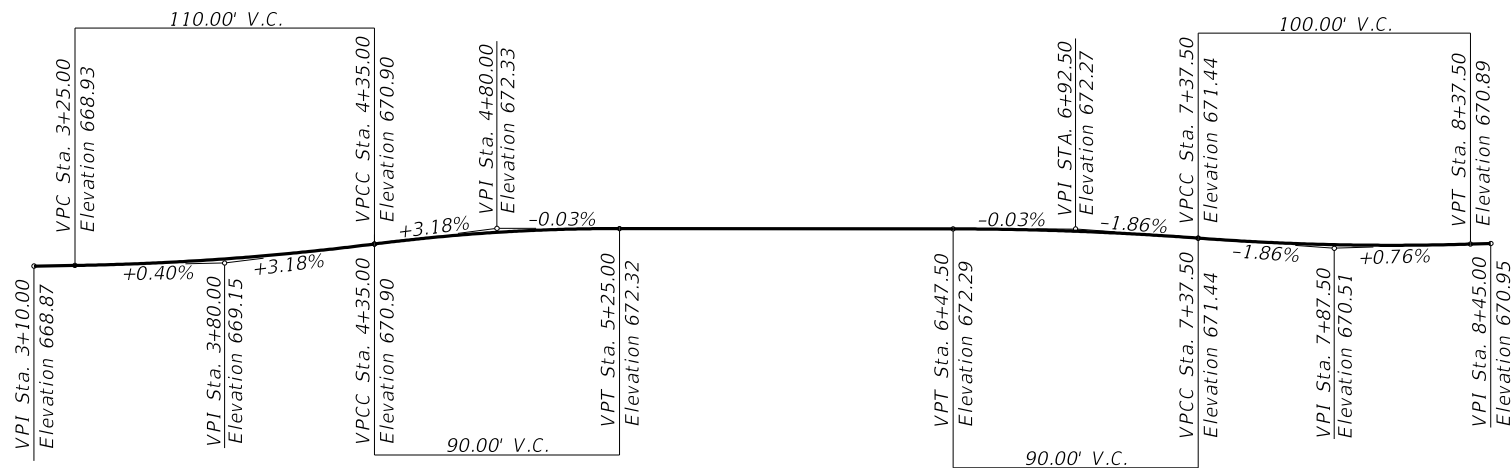
Reinforcement bars designated (E) shall be epoxy coated.

Layout of the slope protection system may be varied to suit ground conditions in the field as directed by the Engineer.

The finishing machine rails shall be placed on the top flange of the exterior beams within the deck pour. Beam blocks shall be placed between beams at all tie locations in each bay for the full width of the deck pour.

Plan dimensions and details relative to the existing structure have been taken from existing plans and are subject to nominal construction variations. The Contractor shall field verify existing dimensions and details affecting new construction and make necessary approved adjustments prior to construction or ordering materials. Such variations shall not be cause for additional compensation for a change in scope of the work, however, the Contractor will be paid for the quantity actually furnished at the unit price bid for the work.

The existing structural steel coating contains lead. The Contractor shall take appropriate precautions to address the presence of lead on this project.



VERTICAL PROFILE

**GENERAL PLAN AND ELEVATION
C.H. 6 (270TH STREET) OVER
HENDERSON CREEK
SEC. 18-00113-00-BR
MERCER COUNTY
STATION 5+85.00
STRUCTURE NO. 066-3024**

REVISION	DATE	BY	REMARKS	DESIGNED	ATK
1	12/14/23	ATK	HOT DIP GALVANIZED BOLTS	DRAWN	DAN
				REVIEWED	ATK
				APPROVED	MRL

**MERCER COUNTY HIGHWAY DEPARTMENT
C.H. 6 (270TH ST.) OVER HENDERSON CREEK
STATION 5+85**

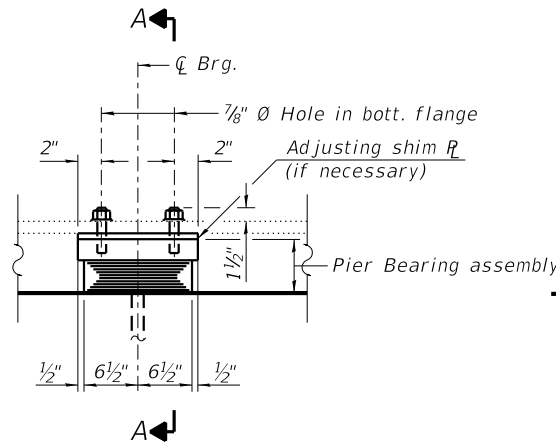


**WILLETT HOFMANN
& ASSOCIATES INC**
ENGINEERING ARCHITECTURE LAND SURVEYING
1515 FIFTH AVENUE, SUITE 102, MOULINE, IL 61265
T: 309-517-1119 DESIGN FIRM: # 184-000918

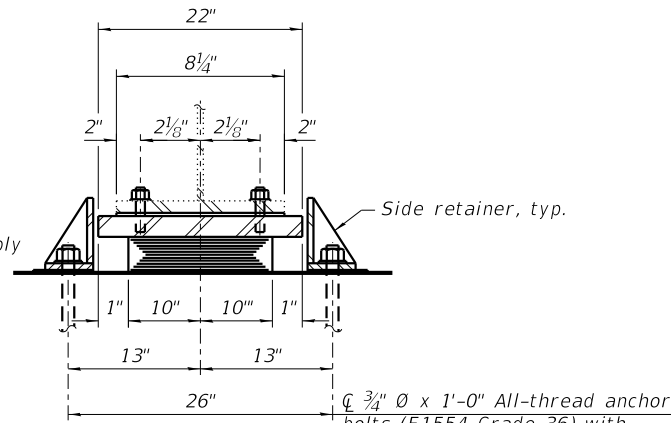
GENERAL PLAN AND LAYOUT

STRUCTURAL SHEET NO. 2 OF 21 SHEETS

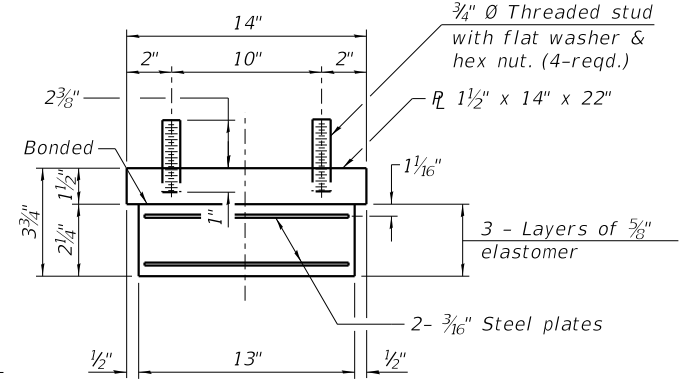
CO. HWY.	SECTION	COUNTY	TOTAL SHEETS	SHEET NO.
6	18-00113-00-BR	MERCER	42	13
WHA# 1338M18		CONTRACT NO.		
ILLINOIS FED. AID PROJECT				



ELEVATION AT PIERS



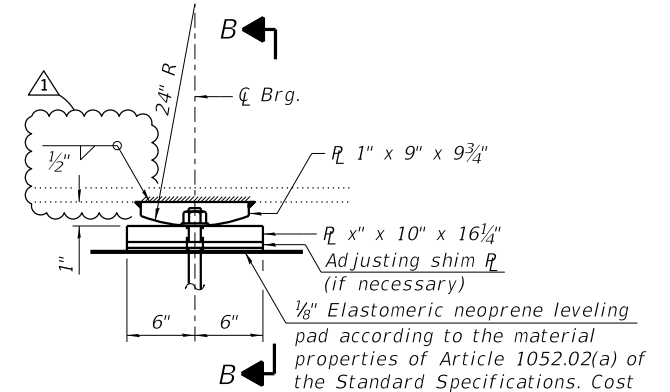
SECTION A-A
TYPE I ELASTOMERIC EXP. BRG. - PIER #2 (NORTH PIER)



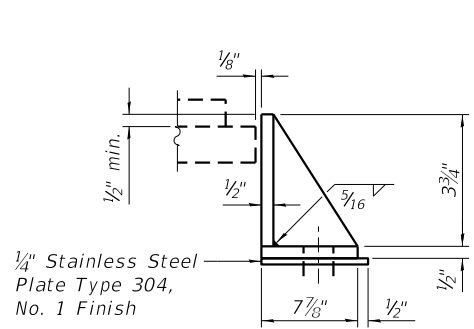
PIER BEARING ASSEMBLY
Shim plates shall not be placed under bearing assembly.

FIXED BEARINGS
BOTTOM PLATE THICKNESS

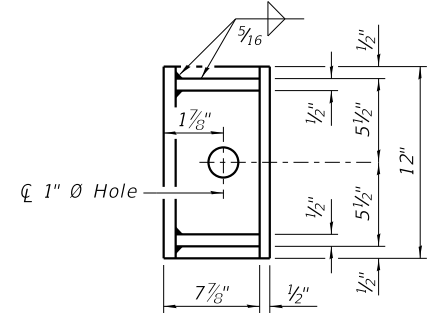
Beam	X
1 & 5	1 1/2"
2 & 4	2 1/2"
3	3 1/2"



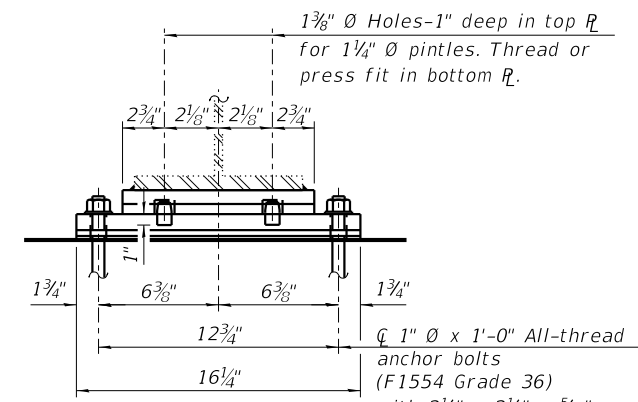
ELEVATION AT PIER



SIDE RETAINER - PIER #2 (NORTH PIER)
Equivalent rolled angle with stiffeners will be allowed in lieu of welded plates.



PINTLE

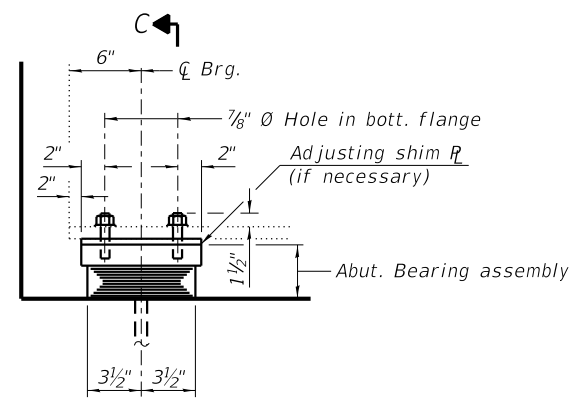


SECTION B-B
FIXED BEARING - PIER #1 (SOUTH PIER)

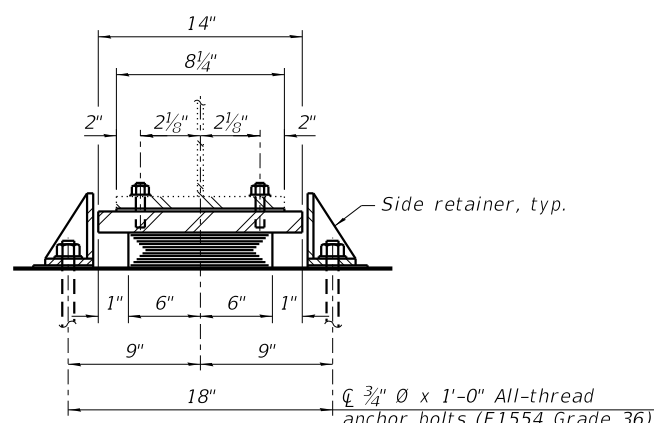
BILL OF MATERIAL

Item	Unit	Total
* Furnishing and Erecting Structural Steel	Pound	660
Elastomeric Bearing Assembly Type I	Each	15
Anchor Bolts, 3/4"	Each	30
Anchor Bolts, 1"	Each	10

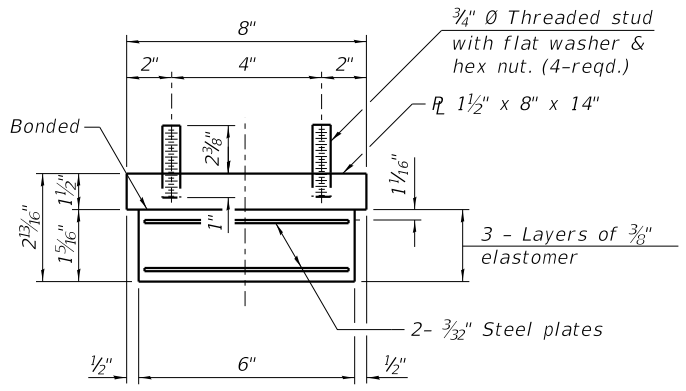
*For information only. Weight of fixed bearings included in calculated weight of structural steel on Structural sheet 2 of 21.



ELEVATION AT ABUT.



SECTION C-C
TYPE I ELASTOMERIC EXP. BRG. - SOUTH ABUT.



ABUTMENT BEARING ASSEMBLY
Shim plates shall not be placed under bearing assembly.

NOTES:

- Two 1/8 in. adjusting shims shall be provided for each bearing in addition to all other plates or shims and placed as shown on bearing details.
- Side retainers and stainless steel plates shall be included in the cost of Elastomeric Bearing Assembly, Type I.
- Anchor bolts shall be ASTM F1554 all-thread (or an Engineer-approved alternate material) of the grade(s) and diameter(s) specified. The corresponding specified grade of AASHTO M314 anchor bolts may be used in lieu of ASTM F1554.
- Bearing seat surfaces shall be constructed or adjusted to the designated elevations within a tolerance of 1/8 in. (0.01 ft.). Adjustment shall be made by either grinding the surface or by shimming the bearings.
- Beams shall be braced for stability during erection and remain braced until deck is poured and cured.
- Anchor bolts and side retainers at all supports shall be installed as each member is erected unless an equivalent temporary means of lateral restraint is used.
- All (embedded and separate) bearing plates, side retainers, anchor bolts, nuts, washers and pintles shall be galvanized according to AASHT M111 or M232 as applicable.

REVISION	DATE	BY	REMARKS	DESIGNED	ATK
1	12/14/23	ATK	REMOVED FIELD WELD	DRAWN	DAN
				REVIEWED	ATK
				APPROVED	MRL

MERCER COUNTY HIGHWAY DEPARTMENT
C.H. 6 (270TH ST.) OVER HENDERSON CREEK
STATION 5+85

BEARING DETAILS
STRUCTURE NO. 066-3024
STRUCTURAL SHEET NO. 11 OF 21 SHEETS

CO. HWY.	SECTION	COUNTY	TOTAL SHEETS	SHEET NO.
6	18-00113-00-BR	MERCER	42	22
WHA# 1338M18		CONTRACT NO.		
ILLINOIS FED. AID PROJECT				