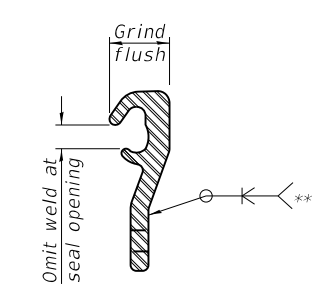
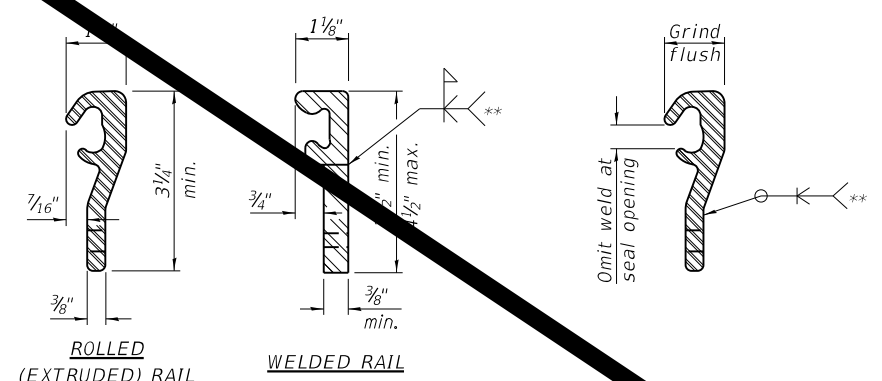
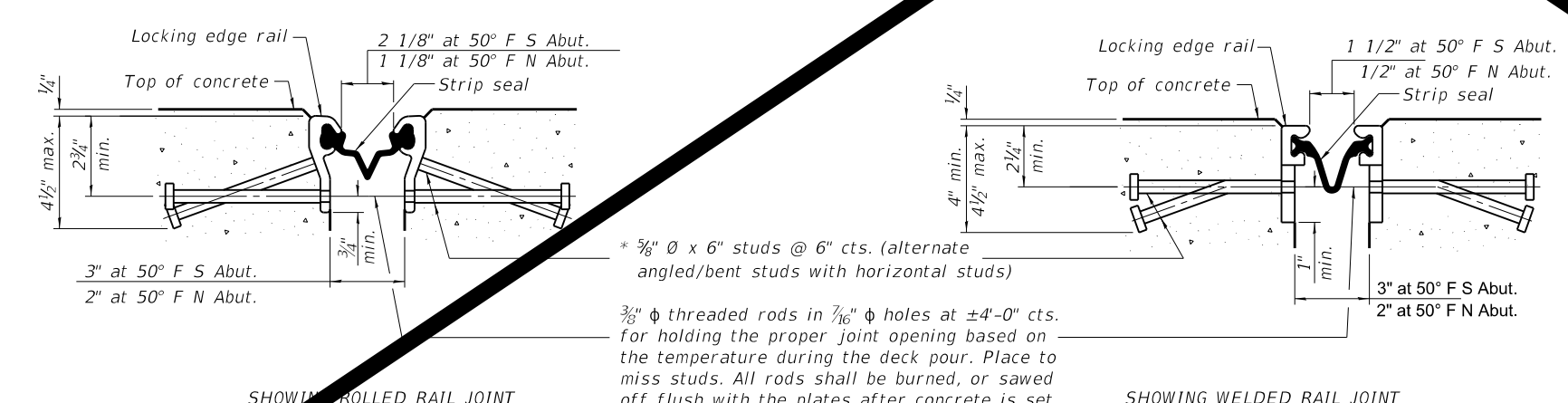
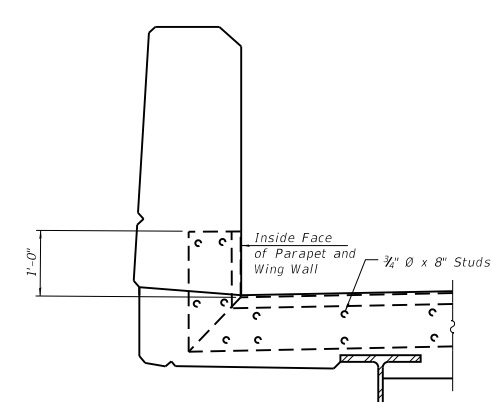
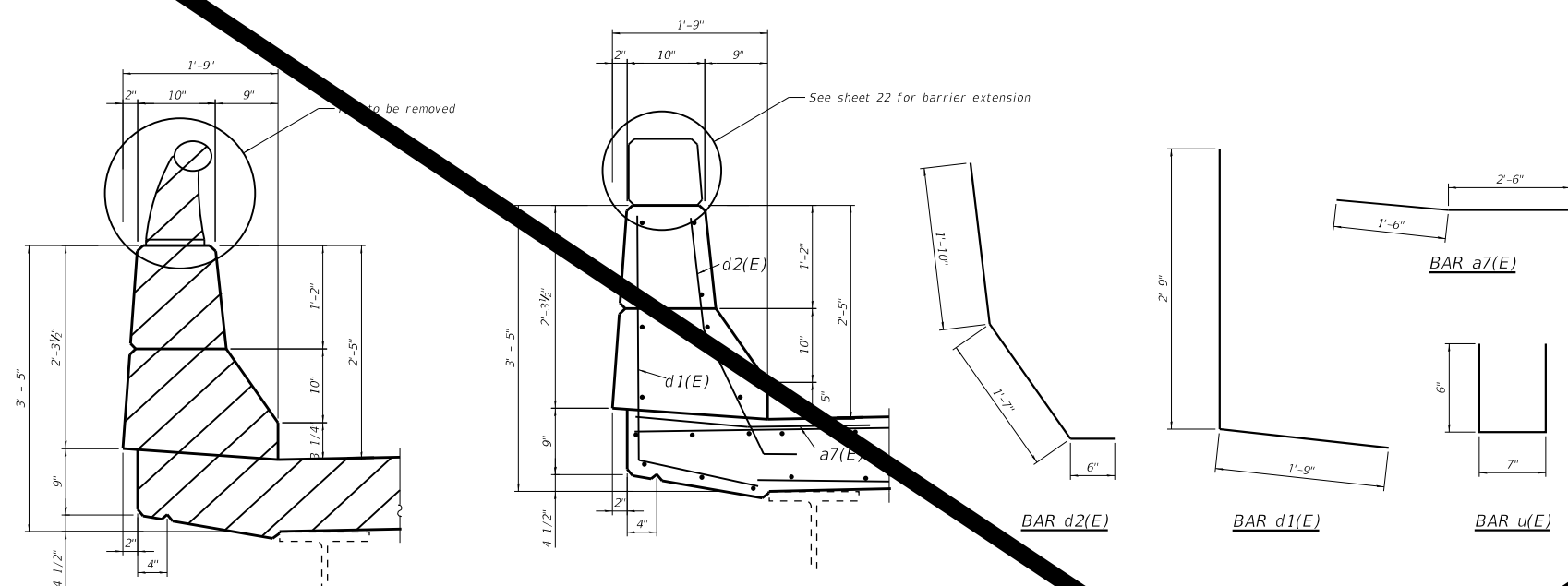


BILL OF MATERIAL
(SN 098-0093)

Bar	No.	Size	Length	Shape
a1(E)	8	5	23'-9"	—
a2(E)	8	5	25'-1"	—
a3(E)	8	5	20'-9"	—
a4(E)	8	5	22'-0"	—
a7(E)	8	6	4'-0"	—
h1(E)	5	6	29'-5"	—
h2(E)	1	6	12'-11"	—
h3(E)	5	6	20'-5"	—
h4(E)	1	6	11'-5"	—
h5(E)	5	6	5'-6"	—
h6(E)	1	5	3'-11"	—
h7(E)	5	6	1'-7"	—
h8(E)	1	5	20'-0"	—
d1(E)	14	4	5'-6"	⌒
d2(E)	14	5	3'-11"	⌒
u(E)	90	4	1'-7"	⌒
Concrete Removal				Cu. Yd 19
Concrete Superstructure				Cu. Yd 19
Bar Splicers				Each 28
Reinforcing Bars, Epoxy Coated				Pound 1793

BILL OF MATERIAL
(SN 098-0094)

Bar	No.	Size	Length	Shape
a5(E)	8	5	48'-1"	—
a6(E)	8	5	51'-0"	—
a7(E)	8	6	4'-0"	—
h9(E)	5	6	48'-1"	—
h10(E)	1	6	27'-3"	—
h11(E)	5	6	51'-0"	—
h12(E)	1	6	28'-11"	—
d1(E)	14	4	5'-6"	⌒
d2(E)	14	5	3'-11"	⌒
u(E)	90	4	1'-7"	⌒
Concrete Removal			Cu. Yd 19	
Concrete Superstructure			Cu. Yd 19	
Reinforcing Bars, Epoxy Coated			Pound 1927	



* 5/8" Ø x 6" studs @ 6" cts. (alternate angled/bent studs with horizontal studs)
 3/8" Ø threaded rods in 7/16" Ø holes at ±4'-0" cts. for holding the proper joint opening based on the temperature during the deck pour. Place to miss studs. All rods shall be burned, or sawed off flush with the plates after concrete is set.

** Back gouge not required if complete joint penetration is verified by mock-up.

The inside of the locking edge rail groove shall be free of weld residue. Rolled rail shown, welded rail similar.

MODEL: Default
 FILE NAME: \\kpf.com\dis\Bldg\2300222 (WCO 2 - US 30 64S31)02_Design (MS)164S31-22 - Joint_Details.dgn
 1500 Sherman Ave, Suite 1020
 Evanston, IL 60201
 847-859-7790
 www.kpff.com

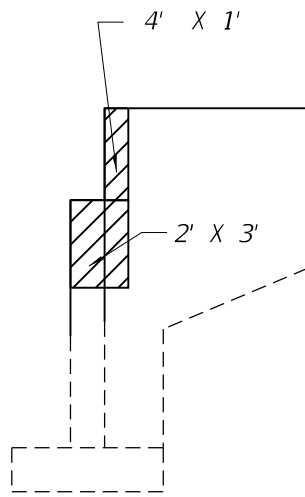
USER NAME =	DESIGNED -	REVISED -
PLOT SCALE =	CHECKED -	REVISED -
PLOT DATE =	DRAWN -	REVISED -
	CHECKED -	REVISED -

STATE OF ILLINOIS
 DEPARTMENT OF TRANSPORTATION

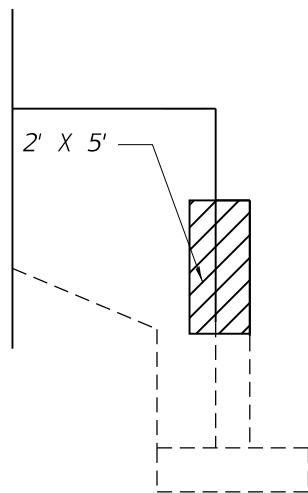
US 30 SPUR CROSSING ELKHORN CREEK AND I-88
 JOINT DETAILS

F.A.P. RTE. 309 & 88	SECTION (195-3B, 195-3B)BDR	COUNTY WHITESIDE	TOTAL SHEETS 22	SHEET NO. 22
CONTRACT NO. 10-031			ILLINOIS FED. AID PROJECT HCT1087	

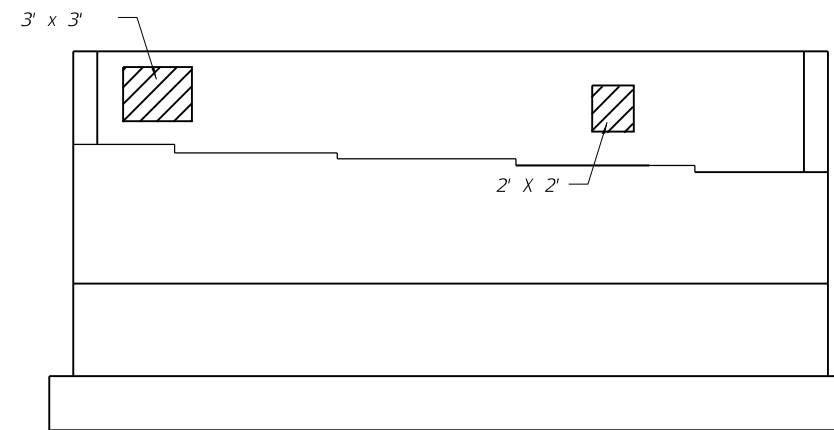
NOTES:
 AREAS SHOWN ARE POTENTIAL AREAS OF CONCRETE REPAIR <5".
 ACTUAL AREAS TO BE DETERMINED BY THE ENGINEER IN THE FIELD.



0093 NORTH ABUTMENT EAST CURTAINWALL



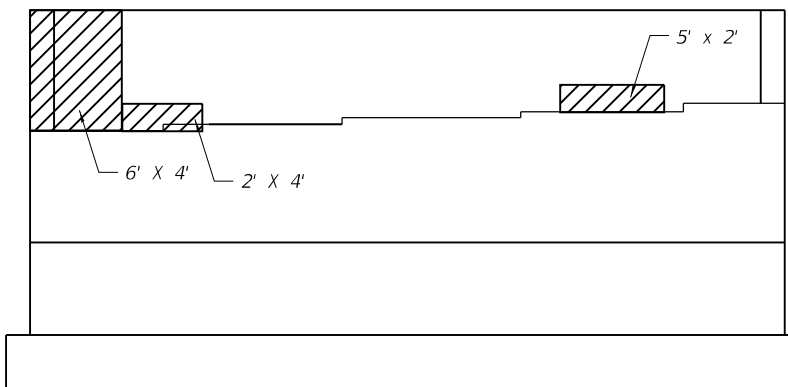
0094 SOUTH ABUTMENT EAST CURTAINWALL



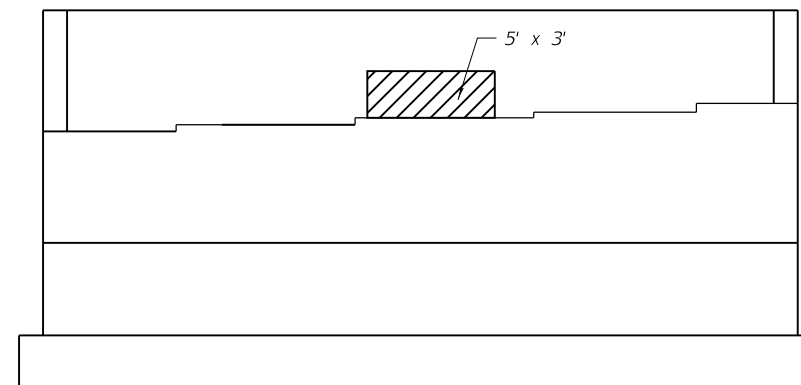
0093 SOUTH ABUTMENT

LEGEND

▨ Structural Repair of Concrete <= 5"



0093 NORTH ABUTMENT



0094 NORTH ABUTMENT

MODEL: Default
 FILE NAME: \\kpff.com\dfs\Bdf\02300222 (WO 2 - US 30 64S31)\02_Design (MS)\64S31-25 - 0093 and 0094 Abutment Repairs.dgn

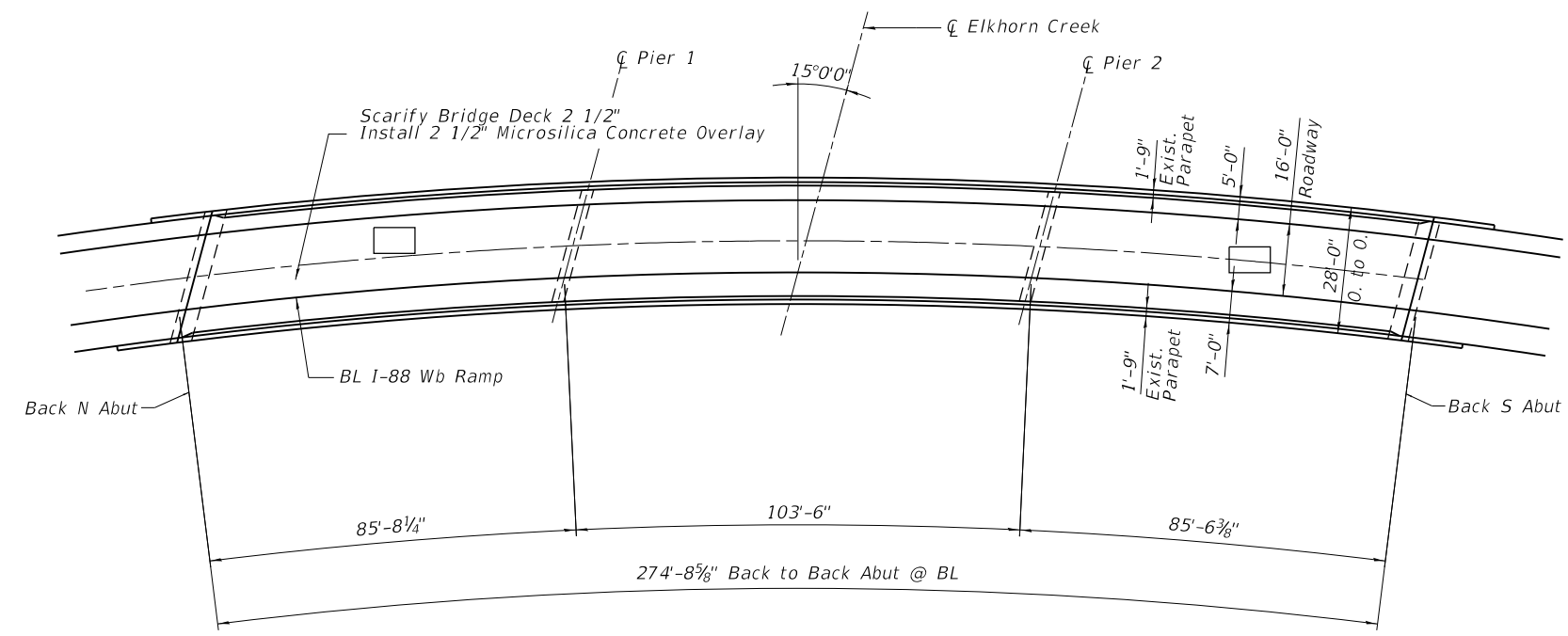


USER NAME =	DESIGNED -	REVISED -
PLOT SCALE =	CHECKED -	REVISED -
PLOT DATE =	DRAWN -	REVISED -
	CHECKED -	REVISED -

STATE OF ILLINOIS
 DEPARTMENT OF TRANSPORTATION

US 30 SPUR CROSSING ELKHORN CREEK AND I-88
 SN 098-0093 AND 0094 ABUTMENT REPAIRS

F.A.P. RTE. 309 & 88	SECTION (195-3B, 195-3B)BDR	COUNTY WHITESIDE	TOTAL SHEETS 50	SHEET NO. 25
ILLINOIS FED. AID PROJECT HCT1087			CONTRACT NO. 64S31	



PLAN

Legend

Deck Slab Repair (Full Depth Type I)

NOTES

PATCHES SHOWN ARE POTENTIAL AREAS OF DECK SLAB REPAIR.
ACTUAL AREAS TO BE DETERMINED BY THE ENGINEER IN THE FIELD.

Date of Survey: 4/27/2023

MODEL: Default
FILE NAME: \\kpff.com\dfs\Brdge\2300222 (WO 2 - US 30 64S31)\02_Design (MS)\64S31-27 - 0092 Deck Repairs.dgn

kpff
1500 Sherman Ave, Suite 1020
Evanston, IL 60201
847-859-7790
www.kpff.com

USER NAME =	DESIGNED -	REVISED -
PLOT SCALE =	CHECKED -	REVISED -
PLOT DATE =	DRAWN -	REVISED -
	CHECKED -	REVISED -

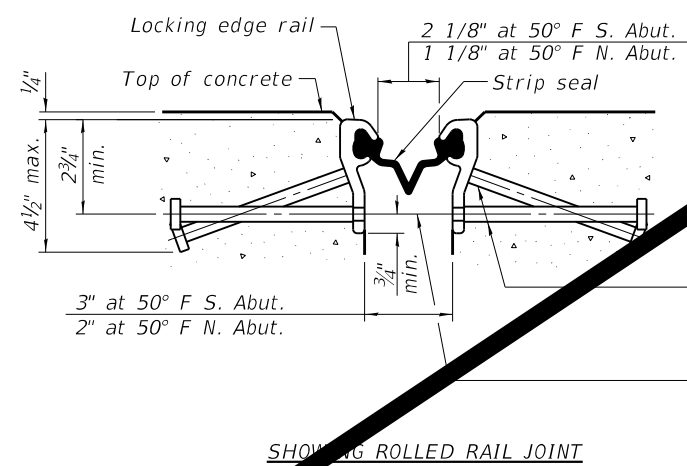
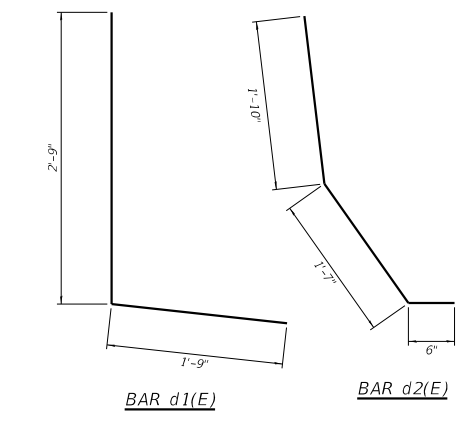
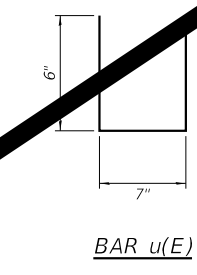
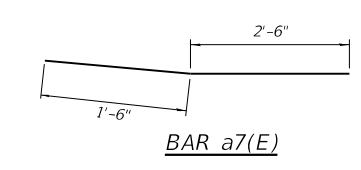
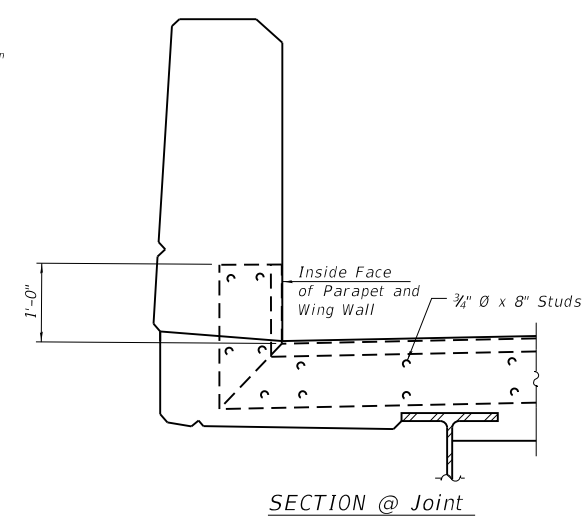
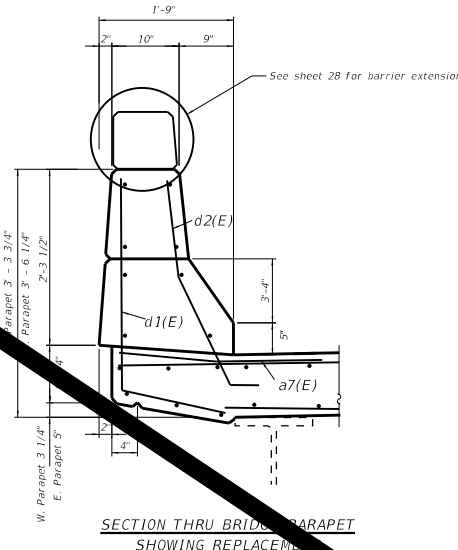
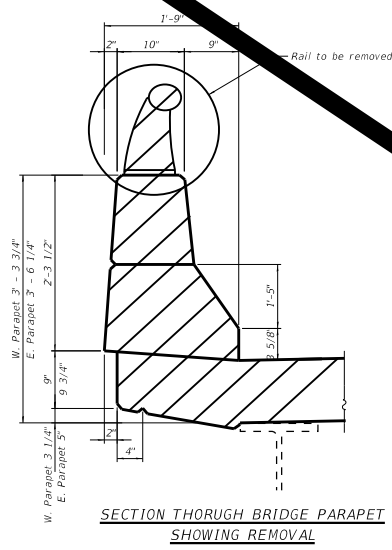
STATE OF ILLINOIS
DEPARTMENT OF TRANSPORTATION

US 30 SPUR CROSSING ELKHORN CREEK AND I-88
SN 098-0092 DECK REPAIRS

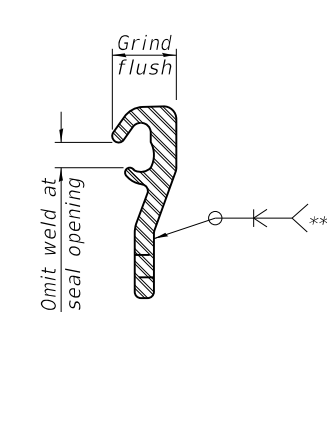
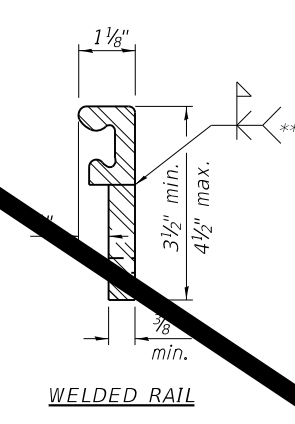
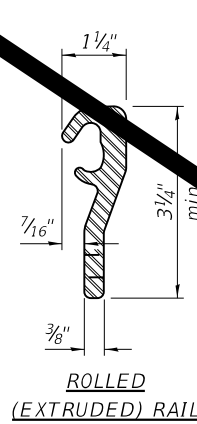
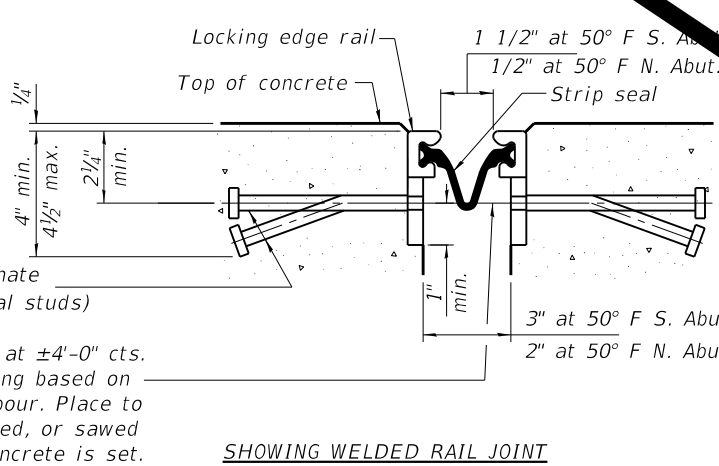
F.A.P. RTE. 309 & 88	SECTION (195-3B, 195-3B)BDR	COUNTY WHITESIDE	TOTAL SHEETS 50	SHEET NO. 27
ILLINOIS FED. AID PROJECT HCT1087				CONTRACT NO. 64S31

BILL OF MATERIAL
SN 098-0092

Bar	No.	Length	Shape
a8(E)	8	29'-10"	—
a7(E)	6	4'-0"	—
a8(E)	8	27'-11"	—
h13(E)	5	29'-10"	—
h14(E)	1	16'-11"	—
h15(E)	5	27'-11"	—
h16(E)	3	15'-10"	—
d1(E)	12	5'-6"	—
d2(E)	12	3'-11"	—
u(E)	54	1'-7"	—
Concrete Removal		Cu. Yd	8
Concrete Superstructure		Cu. Yd	8
Reinforcing Bars, Epoxy Coated		Pound	1138



* 5/8" Ø x 6" studs @ 6" cts. (alternate angled/bent studs with horizontal studs)
3/8" φ threaded rods in 7/16" φ holes at ±4'-0" cts. for holding the proper joint opening based on the temperature during the deck pour. Place to miss studs. All rods shall be burned, or sawed off flush with the plates after concrete is set.



LOCKING EDGE RAILS
** Back gouge not required if complete joint penetration is verified by mock-up.

LOCKING EDGE RAIL SPLICE
The inside of the locking edge rail groove shall be free of weld residue. Rolled rail shown welded rail similar.

SECTION A-A

* Granular or solid flux filled headed studs conforming to Article 1006.32 of the Std. Specs., automatically end welded.

MODEL: Default
FILE NAME: \\kpf.com\dfs\Bldg\2300222 (WCO 2 - US 30 64531)02_Design (MS)64531-29 - 0092_Joint_Details.dgn

kpf
1500 Sherman Ave, Suite 1020
Evanston, IL 60201
847-859-7790
www.kpf.com

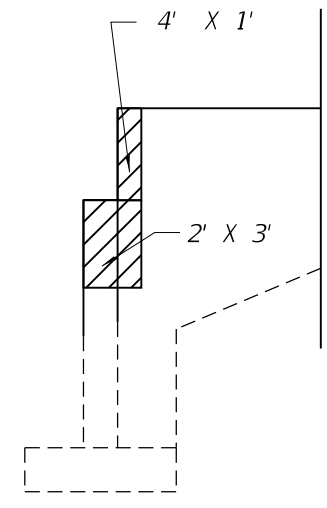
USER NAME =	DESIGNED -	REVISED -
PLOT SCALE =	CHECKED -	REVISED -
PLOT DATE =	DRAWN -	REVISED -
	CHECKED -	REVISED -

STATE OF ILLINOIS
DEPARTMENT OF TRANSPORTATION

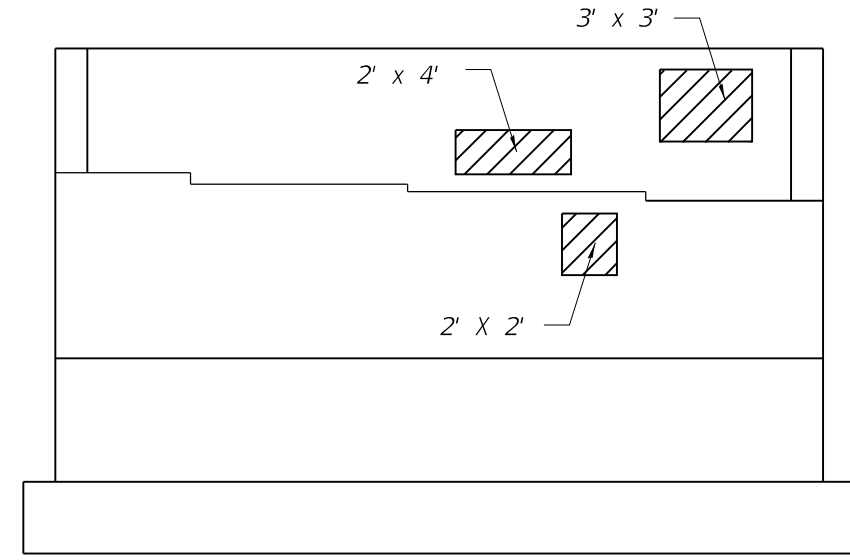
US 30 SPUR CROSSING ELKHORN CREEK AND I-88
SN 098-0092 JOINT DETAILS

F.A.P. RTE. 309 & 88	SECTION (195-3B, 195-3B)BDR	COUNTY WHITESIDE	TOTAL SHEETS 29	SHEET NO. 29
CONTRACT NO. 098-0092			11	

NOTES:
 AREAS SHOWN ARE POTENTIAL AREAS OF CONCRETE REPAIR <5".
 ACTUAL AREAS TO BE DETERMINED BY THE ENGINEER IN THE FIELD.



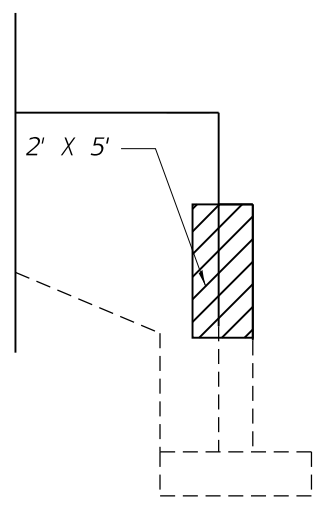
NORTH ABUTMENT EAST CURTAINWALL



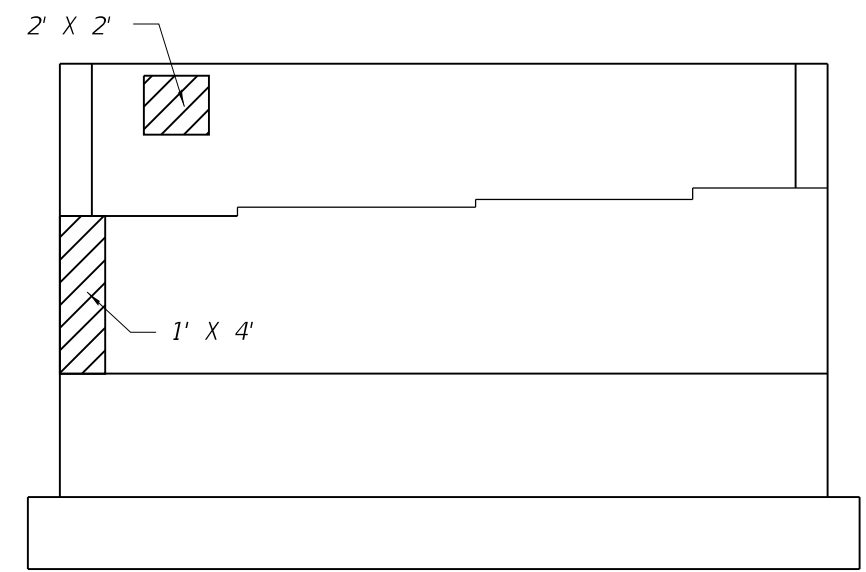
NORTH ABUTMENT

LEGEND

Structural Repair of Concrete <= 5"



SOUTH ABUTMENT WEST CURTAINWALL



SOUTH ABUTMENT

MODEL: Default
 FILE NAME: \\kpff.com\dfs\Brdge\2300222 (WO 2 - US 30 64S31)\02_Design (MS)\64S31-31 - 0092 Abutment Repairs.dgn

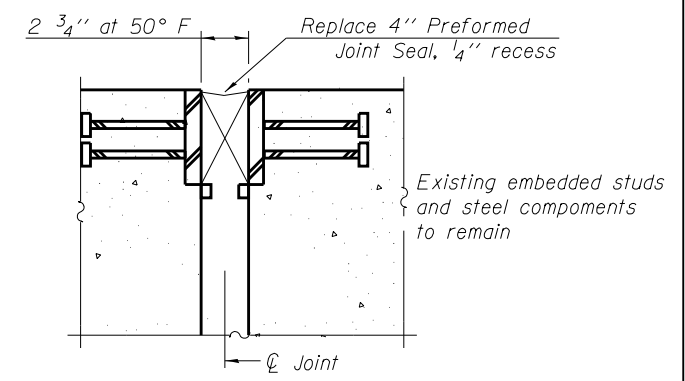
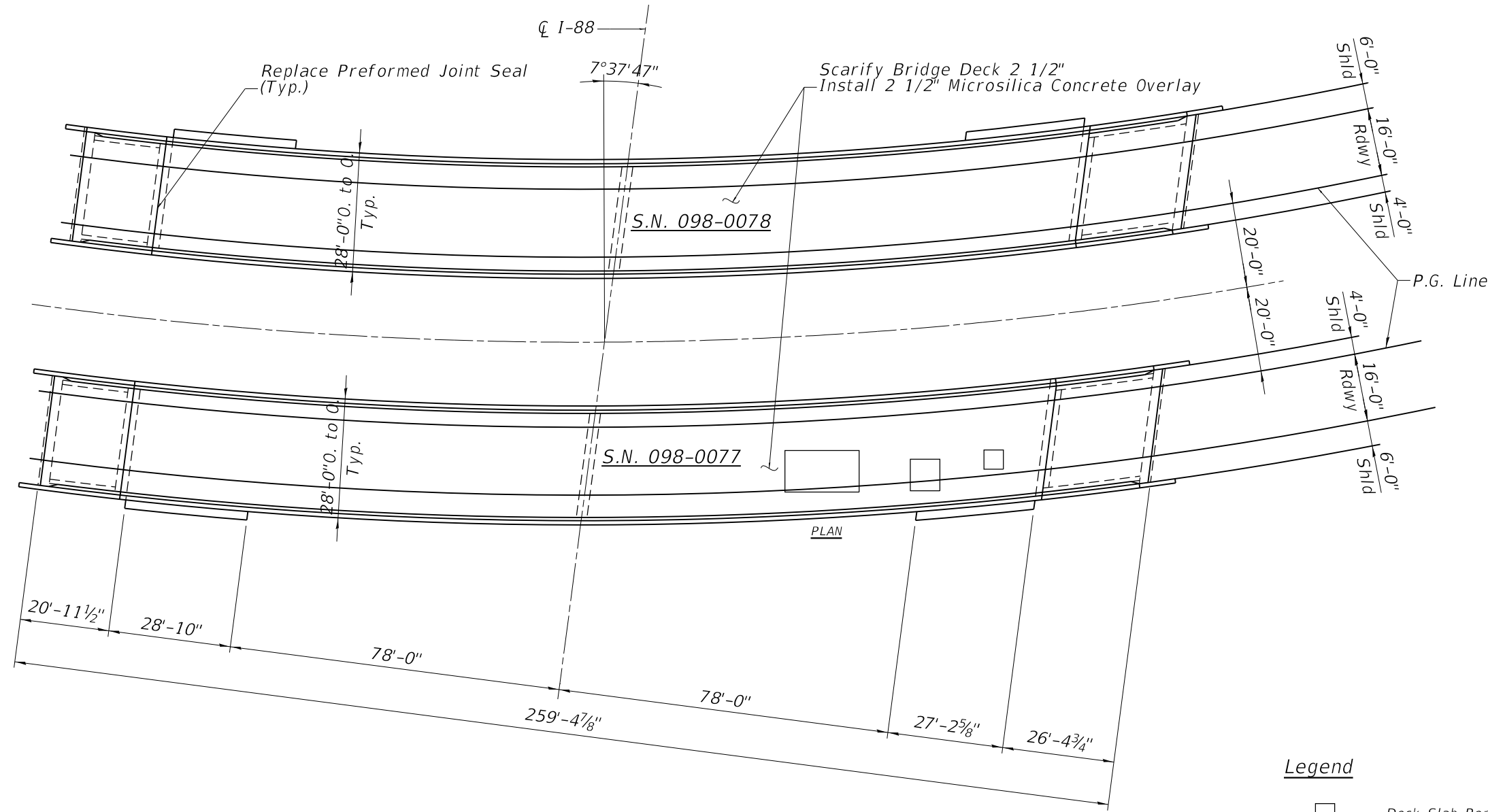
kpff
 1500 Sherman Ave, Suite 1020
 Evanston, IL 60201
 847-859-7790
 www.kpff.com

USER NAME =	DESIGNED -	REVISED -
PLOT SCALE =	CHECKED -	REVISED -
PLOT DATE =	DRAWN -	REVISED -
	CHECKED -	REVISED -

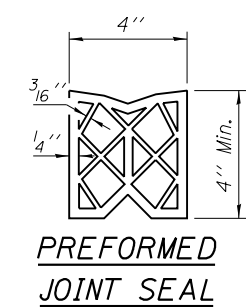
STATE OF ILLINOIS
 DEPARTMENT OF TRANSPORTATION

US 30 SPUR CROSSING ELKHORN CREEK AND I-88
 SN 098-0092 ABUTMENT REPAIRS

F.A.P RTE. 309 & 88	SECTION (195-3B, 195-3B)BDR	COUNTY WHITESIDE	TOTAL SHEETS 50	SHEET NO. 31
ILLINOIS FED. AID PROJECT HCT1087			CONTRACT NO. 64S31	



EXISTING JOINT



PREFORMED JOINT SEAL

Legend

□ Deck Slab Repair (Full Depth Type I)

NOTES
REPAIR AREAS SHOWN ARE POTENTIAL AREAS OF DECK SLAB REPAIR.
ACTUAL AREAS TO BE DETERMINED BY THE ENGINEER IN THE FIELD.

Date of Survey: 4/27/2023

MODEL: Default
FILE NAME: \\kpff.com\dfs\Brdge\2300223 (WO 4 US 30 Ramp 64S32)\02_Design (MS)\64S31_33 - Deck Repairs.dgn



USER NAME =	DESIGNED -	REVISED -
PLOT SCALE =	CHECKED -	REVISED -
PLOT DATE =	DRAWN -	REVISED -
	CHECKED -	REVISED -

STATE OF ILLINOIS
DEPARTMENT OF TRANSPORTATION

US 30 SPUR CROSSING ELKHORN CREEK AND I-88
DECK REPAIRS

F.A.I. RTE. 309 & 88	SECTION (195-3B, 195-3B)BDR	COUNTY WHITESIDE	TOTAL SHEETS 50	SHEET NO. 33
ILLINOIS FED. AID PROJECT HCH1087				CONTRACT NO. 64S31