



Illinois Department of Transportation

Office of Intermodal Project Implementation / Division of Aeronautics
1 Langhorne Bond Drive / Springfield, Illinois 62707-8415

January 4, 2024

SUBJECT: Abraham Lincoln Capital Airport
Springfield, Illinois
Sangamon County
Illinois Project Number: SPI-4977
AIP Project Number: N/A
Contract No. CA024
Item No. 13A, January 19, 2024 Letting
Addendum A

NOTICE TO PROSPECTIVE BIDDERS

Attached is an addendum to the plans. This addendum involves revised and added material.

Reason for Addendum:

Additional pavement in main parking lot in front of the Public Safety Facility.
Revision to various pay item descriptions and quantities.
Revisions to text to better align with design intent and current requirements.

To All Plan Holders:

The pay items and quantities have been updated to reflect the current scope of work. Grading and paving in the main parking have been expanded to create a more useable layout.

The concrete pad underneath the transformer has been proposed at a thicker depth of 12", per CWLP's request.

Plan Changes:

Replace sheet 2 with revised sheet 2 - Summary of Quantities
Replace sheet 3 with revised sheet 3 – Schedules
Replace sheet 4 with revised sheet 4 – Schedules
Replace sheet 10 with revised sheet 10 – Removal Plan
Replace sheet 18 with revised sheet 18 – Plan
Replace sheet 23 with revised sheet 23 – CSPP Notes
Replace sheet 28 with revised sheet 28 – CSPP 2A/2B
Replace sheet 30 with revised sheet 30 – CSPP 3
Replace sheet 35 with revised sheet 35 – Erosion Control Plan
Replace sheet 54 with revised sheet 54 – Lighting and Electrical General Notes

Special Provisions Changes:

Page 9 - Updated unit for Remove Concrete – CU YD
Page 12 - Added pay item for 12" PCC Pavement
Page 15 - Removed Item AR751900 – Remove Inlet
Page 17 - Updated pay item Name for AR108542 to 1/C #8 Ground
Page 17 - Added Item 110610 – Electrical Handhole
Page 17 – Added Basis of Payment for AR110610 and AR110906

Schedule of Prices Changes:

ADDED - AR110610 - Electrical Handhole - 1 Each
ADDED - AR110906 - Remove Electrical Handhole - 1 Each
REVISED - AR152410 Unclassified Excavation - 1667.5 CU YD
REVISED - AR152621 Remove Concrete - 1.6 CU YD
REVISED - AR156531 - Erosion Control Blanket - 1026.5 SQ YD
REVISED - AR209608 Crushed Aggregate Base Course - 8" - 10,684.8 SQ YD
REVISED - AR401613 Bit. Surf. Cse. - Method I, Superpave - 2508.9 TON
REVISED - AR501511 - 11" PCC Pavement - 1458.6 SQ YD
ADDED - AR501512 12" PCC Pavement - 4.0 SQ YD
REVISED - AR501604 4" PCC Sidewalk - 1485.0 SQ FT
REVISED - AR602510 Bituminous Prime Coat - 3449.0 GAL
REMOVED - AR751900 Remove Inlet
REMOVED - AR801659 Relocate Existing Light Pole

Prime contractors must utilize the enclosed material when preparing their bid and must include any changes to the Schedule of Prices in their bid.

Questions on this addendum may be directed to Julie Shipp of WSP at 217-615-4215.

ITEM 152621 – REMOVE CONCRETE

BASIS OF PAYMENT

Payment will be made under:

ITEM AR152621 REMOVE CONCRETE - PER CU YD

ITEM 156000 – EROSION CONTROL

156-3.2 TEMPORARY EROSION CONTROL

ADD:

F. Erosion Control Blanket. Erosion control blanket may be placed using either excelsior blanket or knitted straw blanket. Within 24 hours of seed placement, blanket shall be placed on the areas specified. Prior to placing the blanket, the areas to be covered shall be relatively free of rocks or clods over 1 1/2 in. (40 mm) in diameter, and sticks or other foreign material which will prevent the close contact of the blanket with the seed bed. If, as a result of rain, the prepared seed bed becomes crusted or eroded, or if eroded places, ruts, or depressions exist for any reason, the Contractor shall rework the soil until it is smooth and reseed such areas which are reworked.

After the area has been properly shaped, fertilized, and seeded, the blanket shall be laid out flat, evenly, and smoothly, without stretching the material. The excelsior and knitted straw blankets shall be placed so that the netting is on the top and the fibers are in contact with the soil.

When placed adjacent to the roadway, blankets shall be toed in along the edge of shoulder.

Anchoring the blankets shall be according to the manufacturer's specifications.

BASIS OF PAYMENT

ADD:

Payment will be made under:

ITEM AR156520 INLET PROTECTION – PER EACH
ITEM AR156531 EROSION CONTROL BLANKET – SQ YD

Milling equipment will not be allowed in removal locations where the bituminous pavement removal will expose a surface of aggregate or subgrade material. In such locations, equipment that is capable of scraping the existing pavement from the subgrade layer will be required.

BASIS OF PAYMENT

ADD:

Payment will be made under:

ITEM AR401900 REMOVE BITUMINOUS PAVEMENT – PER SQUARE YARD
ITEM AS401900 REMOVE BITUMINOUS PAVEMENT – PER SQUARE YARD

ITEM 501 - PORTLAND CEMENT CONCRETE PAVEMENT

MATERIALS

ADD:

Portland cement concrete shall conform to ITEM 501 and shall be Class SI mix.

BASIS OF PAYMENT

ADD:

Payment will be made under:

ITEM AR501604 4" PCC SIDEWALK – PER SQUARE FOOT
ITEM AR501506 6" PCC PAVEMENT – PER SQUARE YARD
ITEM AR501507 7" PCC PAVEMENT – PER SQUARE YARD
ITEM AR501511 11" PCC PAVEMENT – PER SQUARE YARD

ITEM AR501512 12" PCC PAVEMENT – PER SQUARE YARD

ITEM 501900 – REMOVE PCC PAVEMENT

CONSTRUCTION METHODS

ADD:

Jackhammering will not be an acceptable method of removal for the PCC pavement along North Airport Road. Due to the need to preserve the subbase material and to leave the existing storm sewer laterals in place, sawcutting and lifting the pavement panels would be an acceptable method. The Contractor may propose an alternative method as approved by the Engineer.

DIVISION IV – DRAINAGE

ITEM 751 – MANHOLES, CATCH BASINS, INLETS AND INSPECTION HOLES

BASIS OF PAYMENT

ADD:

Payment will be made under:

ITEM AR751900	REMOVE INLET – PER EACH
ITEM AR751927	REPLACE FRAME AND GRATE – PER EACH
ITEM AR751940	ADJUST INLET – PER EACH
ITEM AS751940	ADJUST INLET – PER EACH
ITEM AR751943	ADJUST MANHOLE – PER EACH
ITEM AS751943	ADJUST MANHOLE – PER EACH
ITEM AR751900	REMOVE INLET – PER EACH
ITEM AR751927	REPLACE FRAME AND GRATE – PER EACH

ITEM 754 – CONCRETE GUTTERS, DITCHES, AND FLUMES

BASIS OF PAYMENT

ADD:

Payment will be made under:

ITEM AR754410	COMB CONCRETE CURB & GUTTER – PER LINEAL FOOT
ITEM AR754900	REMOVE CONCRETE CURB – PER LINEAL FOOT
ITEM AR754904	REMOVE COMB CURB & GUTTER – PER LINEAL FOOT

DIVISION V – TURFING

ITEM 901 - SEEDING

MATERIALS

901-2.1

ADD:

Seeding shall be Class 2 as defined in the “Standard Specifications for Road and Bridge Construction, Adopted January 1, 2022.”

ITEM 108 – INSTALLATION OF UNDERGROUND CABLES FOR AIRPORTS

BASIS OF PAYMENT

ADD:

Payment will be made under:

ITEM AR108082 1/C #2 XLP-USE – PER LINEAL FOOT
ITEM AR108086 1/C #6 XLP-USE - PER LINEAL FOOT
ITEM AR108090 1/C #10 XLP-USE - PER LINEAL FOOT
ITEM AR108542 1/C #8 **GROUND** PER LINEAL FOOT

ITEM 110 – INSTALLATION OF AIRPORT UNDERGROUND ELECTRICAL DUCT

ITEM 110610 – ELECTRICAL HANDHOLE

MATERIALS

ADD:

The proposed handhole is to be placed in the south corner of the main parking lot, adjacent to the Public Safety Facility entrance. The handhole shall be of material strength to withstand traffic loads. The PCC Heavy Duty Handhole as detailed in IDOT's Highway Standard 814001-03 would be sufficient for use at this location. All materials, labor, and equipment needed for installation of the handhole shall be included in the unit cost, per each.

BASIS OF PAYMENT

ADD:

Payment will be made under:

ITEM AR110117 1-1/2" PVC DUCT, DIRECT BURY – PER LINEAL FOOT
ITEM AR110610 ELECTRICAL HANDHOLE – EACH
ITEM AR110906 REMOVE ELECTRICAL HANDHOLE - EACH

SP	ITEM NO.	ITEM DESCRIPTION	UNIT	QNTY
	AR106401	LIGHT POLE	EACH	2
	AR106965	RELOCATE LIGHT POLE & FIXTURE	EACH	1
	AR108082	1/C #2 XLP-USE	FOOT	120.0
	AR108086	1/C #6 XLP-USE	FOOT	7280.0
	AR108090	1/C #10 XLP-USE	FOOT	140.0
1	AR108542	1/C #8 GROUND	FOOT	2430.0
	AR110117	1 1/2" PVC DUCT, DIRECT BURY	FOOT	140.0
	AR110201	1" PVC DUCT, DIRECT BURY	FOOT	740
1	AR110610	ELECTRICAL HANDHOLE	EACH	1
1	AR110906	REMOVE ELECTRICAL HANDHOLE	EACH	1
	AR150510	ENGINEER'S FIELD OFFICE	L SUM	1
	AR150520	MOBILIZATION	L SUM	1
	AR150530	TRAFFIC MAINTENANCE	L SUM	1
1	AR152410	UNCLASSIFIED EXCAVATION	CU YD	1667.5
X	AR152490	CRUSHED AGGREGATE BACKFILL	CU YD	12.7
1	AR152621	REMOVE CONCRETE	CU YD	1.6
	AR156520	INLET PROTECTION	EACH	14
1	AR156531	EROSION CONTROL BLANKET	SQ YD	1026.5
	AR156543	RIPRAP - GRADATION NO. 3	SQ YD	29.2
	AR162900	REMOVE CLASS E FENCE	FOOT	89.0
	AR209604	CRUSHED AGG. BASE COURSE - 4"	SQ YD	52.8
1	AR209608	CRUSHED AGG. BASE COURSE - 8"	SQ YD	10684.8
1	AR401613	BIT. SURF. CSE. -METHOD I, SUPERPAVE	TON	2508.9
	AR401620	BIT. SURFACE COURSE, LEVELING	TON	66.0
	AR401655	BUTT JOINT CONSTRUCTION	SQ YD	53.1
	AR401900	REMOVE BITUMINOUS PAVEMENT	SQ YD	17932.2
	AR501506	6" PCC PAVEMENT	SQ YD	65.6

SP	ITEM NO.	ITEM DESCRIPTION	UNIT	QNTY
	AR501507	7" PCC PAVEMENT	SQ YD	7953.9
1	AR501511	11" PCC PAVEMENT	SQ YD	1458.6
1	AR501512	12" PCC PAVEMENT	SQ YD	4.0
1	AR501604	4" PCC SIDEWALK	SQ FT	1485.0
	AR501690	PCC SIDEWALK REMOVAL	SQ FT	1447.0
	AR501900	REMOVE PCC PAVEMENT	SQ YD	9084.5
1	AR602510	BITUMINOUS PRIME COAT	GALLON	3449.0
	AR603510	BITUMINOUS TACK COAT	GALLON	355.0
X	AR620510	PAVEMENT MARKING	SQ FT	247.4
	AR620520	PAVEMENT MARKING - WATERBORNE	SQ FT	5779.3
1	AR751900	REMOVE INLET	EACH	0
X	AR751927	REPLACE FRAME & GRATE	EACH	2
	AR751940	ADJUST INLET	EACH	7
	AR751943	ADJUST MANHOLE	EACH	6
	AR754410	COMB CONC CURB AND GUTTER	FOOT	3660.5
	AR754900	REMOVE CONCRETE CURB	FOOT	74.3
	AR754904	REMOVE COMB CURB AND GUTTER	FOOT	4217.4
X	AR801652	FLAG POLE	EACH	1
	AR801656	LIGHT POLE FOUNDATION (TYPE F7A)	EACH	3
	AR801657	LIGHTING CONTROLLER FOUNDATION	EACH	1
	AR801658	REMOVE CONCRETE FOUNDATION	EACH	2
1	AR801659	RELOCATE EXISTING LIGHT POLE	EACH	0
	AR801662	PARKING LED LUMINAIRE, TYPE V DISTRIBUTION	EACH	4
	AR801663	PARKING LED LUMINAIRE, TYPE II DISTRIBUTION	EACH	1
	AR801666	RELOCATE LIGHTING CONTROLLER	EACH	1
	AR801669	DETECTABLE WARNING SURFACE	SQ YD	8.2
	AR801672	CLEAN CULVERT	EACH	1

SP	ITEM NO.	ITEM DESCRIPTION	UNIT	QNTY
X	AR801673	REMOVE SIGN SUPPORT	EACH	8
	AR901510	SEEDING	ACRE	0.25
	AR901550	LIME AND FERTILIZER	ACRE	0.25
	AR905520	TOPSOILING	CU YD	132.2
X	AR910201	SIGN PANEL	SQ FT	246.0
X	AR910240	SIGN SUPPORT	EACH	9
	AR910250	TELESCOPING SIGN SUPPORT	EACH	6
	AR910915	REMOVE ROADWAY SIGN	EACH	8

ADDITIVE ALTERNATE 1 : IDOA PARKING LOT

SP	ITEM NO.	ITEM DESCRIPTION	UNIT	QNTY
	AS401613	BIT. SURF. CSE. -METHOD I, SUPERPAVE	TON	921.9
	AS401900	REMOVE BITUMINOUS PAVEMENT	SQ YD	8203.8
	AS603510	BITUMINOUS TACK COAT	GALLON	410
	AS620520	PAVEMENT MARKING - WATERBORNE	SQ FT	1132.6
	AS751940	ADJUST INLET	EACH	4
	AS751943	ADJUST MANHOLE	EACH	1



3200 Pleasant Run
Suite A
Springfield, IL 62711
Phone: (217) 546-7455

USER NAME = USJS706126	DESIGNED	REVISED 12/29/2023
	DRAWN	REVISED -
	CHECKED	REVISED -
PLLOT DATE = 12/29/2023	DATE	REVISED -

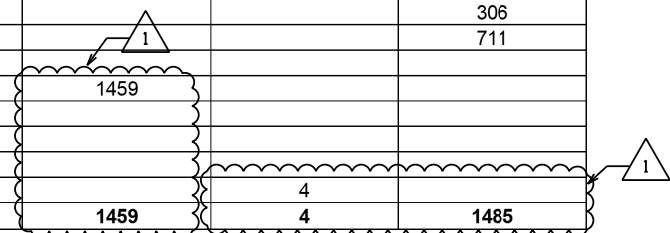
STATE OF ILLINOIS
DEPARTMENT OF TRANSPORTATION

SUMMARY OF QUANTITIES



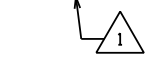
TOTAL SHEETS	SHEET NO.
68	2
IL. PROJ. SPI-4977	

PCC PAVEMENT											
LOCATION	FROM STA.	TO STA.	RT/LT/CTR	WIDTH	AR209604	AR209608	AR501506	AR501507	AR501511	AR501512	AR501604
					CRUSHED AGG. BASE COURSE - 4"	CRUSHED AGG. BASE COURSE - 8"	6" PCC PAVEMENT	7" PCC PAVEMENT	11" PCC PAVEMENT	12" PCC PAVEMENT	4" PCC SIDEWALK
					SQ YD	SQ YD	SQ YD	SQ YD	SQ YD	SQ YD	SQ FT
NORTH AIRPORT DR	41+57	51+50	CTR	33		3675					
NORTH AIRPORT DR	41+57	51+50	CTR	28			3090				
ENTRANCE @ NORTH AIRPORT DR	46+10	46+81	LT		27						
ENTRANCE @ NORTH AIRPORT DR	46+12	46+80	LT					32			
ENTRANCE @ NORTH AIRPORT DR	49+34	49+99	LT		26						
ENTRANCE @ NORTH AIRPORT DR	49+33	50+01	LT					33			
NORTH AIRPORT DR	51+50	51+82	CTR				143				
NORTH AIRPORT DR INTERSECTION	51+50	51+96	CTR			475					
PARKING ACCESS RD	5+08	8+37	CTR	33		1217					
PARKING ACCESS RD	8+37	9+22	CTR			280					
PARKING ACCESS RD	9+19	9+99	LT								468
PARKING ACCESS RD	4+18	10+64	CTR	28				2011			
PARKING ACCESS RD	9+22	10+64	CTR			510					
STANDARD AERO PARKING LOT AND ENTRANCE	0+16	3+69	CTR			2966					
STANDARD AERO PARKING LOT AND ENTRANCE	0+16	3+69	CTR					2651			
STANDARD AERO PARKING LOT ENTRANCE	1+36	1+69	LT								306
STANDARD AERO PARKING LOT ENTRANCE	1+91	2+91	LT								711
PUBLIC SAFETY FACILITY PARKING LOT AND ENTRANCE						1461					
PUBLIC SAFETY FACILITY PARKING LOT AND ENTRANCE											
PARKING LOT ENTRANCE MEDIAN						27		60			
PARKING LOT EXIT MEDIAN						27					
PARKING LOT AND PUBLIC SAFETY FACILITY CONNECTION						47					
TRANSFORMER PAD											
TOTAL					53	10685	66	7954	1459	4	1485

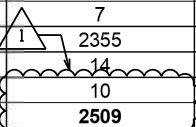


PAVEMENT REMOVAL								
LOCATION	FROM STA.	TO STA.	RT/LT/CTR	WIDTH	AR152621	AR401900	AR501690	AR501900
					REMOVE CONCRETE	REMOVE BITUMINOUS PAVEMENT	PCC SIDEWALK REMOVAL	REMOVE PCC PAVEMENT
					CU YD	SQ YD	SQ FT	SQ YD
NORTH AIRPORT DR	41+57	51+51	CTR	28				3090
ENTRANCE @ NORTH AIRPORT DR	46+10	46+81	LT					32
ENTRANCE @ NORTH AIRPORT DR	49+34	49+99	LT					33
NORTH AIRPORT DR	51+51	51+82	CTR					143
PARKING ACCESS RD	4+18	10+64	CTR	28				2011
PARKING ACCESS RD	9+19	9+99	LT					
STANDARD AERO ENTRANCE AND PARKING LOT	1+36	1+69	LT			466		
STANDARD AERO ENTRANCE AND PARKING LOT	1+91	2+91	LT			254		
STANDARD AERO ENTRANCE AND PARKING LOT	0+16	3+69	CTR			727		
PARKING LOT BACK ENTRANCE								2259
PARKING LOT ENTRANCE								12
PUBLIC SAFETY FACILITY ENTRANCE AND PARKING LOT								1505
PARKING LOT						17932		
PARKING LOT ENTRANCE MEDIAN					2			
TOTAL					2	17932	1447	9085

EARTHWORK SCHEDULE					
LOCATION	FROM STA.	TO STA.	AR152410	AR152490	AR905530
			UNCLASSIFIED EXCAVATION	CRUSHED AGGREGATE BACKFILL	TOPSOILING
			CU YD	CU YD	CU YD
NORTH AIRPORT DR	41+57.25	45+00.00	299		25
NORTH AIRPORT DR	45+00.00	50+00.00	501		33
NORTH AIRPORT DR	50+00.00	51+81.61	173		13
PARKING ACCESS RD	00+07.28	04+19.00	23		31
PARKING ACCESS RD	04+19.00	08+00.00	406		23
PARKING ACCESS RD	08+00.00	10+64.00	252		6
PARKING ACCESS RD TEMP PAVEMENT WARE RD				6	
PARKING LOT AND PSF CONNECTION			14	7	
TOTAL			1668	13	132



HOT MIX ASPHALT PAVEMENT								
LOCATION	FROM STA.	TO STA.	RT/LT/CTR	AR401613	AR401620	AR401655	AR602510	AR603510
				BIT. SURF. CSE. METHOD I SUPERPAVE	BIT. SURFACE COURSE, LEVELING	BUTT JOINT CONSTRUCTION	BITUMINOUS PRIME COAT	BITUMINOUS TACK COAT
				TON	TON	SQ YD	GALLON	GALLON
PARKING ACCESS RD	0+07	27	CTR			39		
PARKING ACCESS RD	0+00	4+18	CTR	123				59
PARKING ACCESS RD	0+29	0+50	CTR		1			
PARKING ACCESS RD	0+50	1+00	CTR		4			
PARKING ACCESS RD	1+00	1+50	CTR		6			
PARKING ACCESS RD	1+50	2+00	CTR		7			
PARKING ACCESS RD	2+00	2+50	CTR		10			
PARKING ACCESS RD	2+50	3+00	CTR		13			
PARKING ACCESS RD	3+00	3+50	CTR		12			
PARKING ACCESS RD	3+50	3+98	CTR		12			
PARKING ACCESS RD	3+98	4+18	CTR			14		
PARKING ACCESS RD TEMP PAVEMENT				7			3391	296
PARKING LOT				2355				
WARE RD				14			33	
PARKING LOT AND PUBLIC SAFETY FACILITY CONNECTION				10			25	
TOTAL				2509	66	53	3449	355



wsp
 3200 Pleasant Run
 Suite A
 Springfield, IL 62711
 Phone: (217) 546-7455

USER NAME = USJS706126	DESIGNED	REVISED 12/29/2023
	DRAWN	REVISED -
	CHECKED	REVISED -
PLOT DATE = 12/29/2023	DATE	REVISED -

**STATE OF ILLINOIS
DEPARTMENT OF TRANSPORTATION**

SCHEDULE OF QUANTITIES

**ABRAHAM LINCOLN
CAPITAL AIRPORT**
SPRINGFIELD AIRPORT AUTHORITY

TOTAL SHEETS	SHEET NO.
68	3
IL. PROJ. SPI-4977	

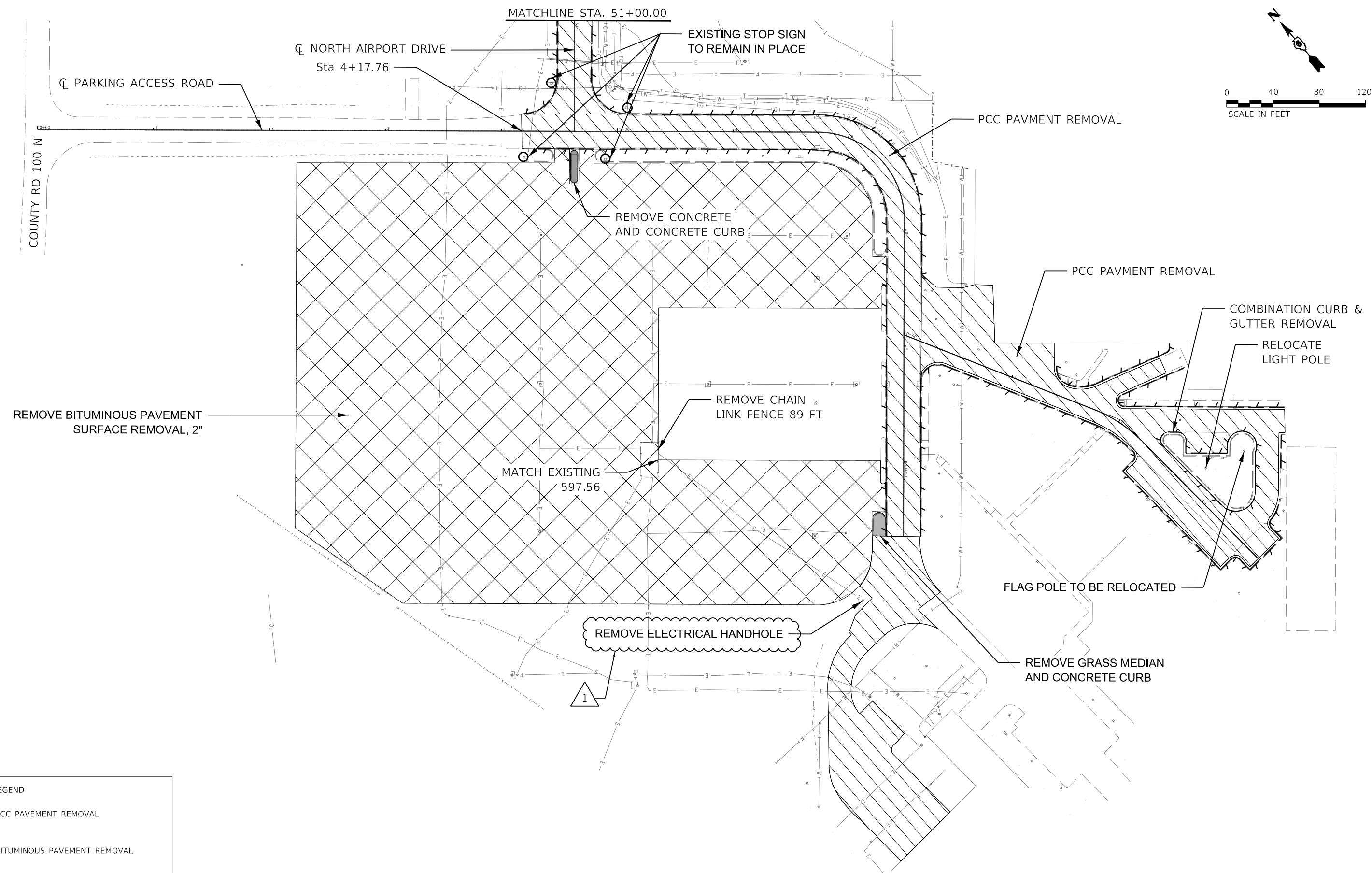
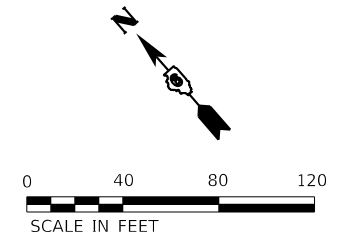
EROSION CONTROL SCHEDULE					
LOCATION	FROM STA	TO STA	LT/RT/CTR	AR156531	AR156520
				EROSION CONTROL BLANKET	INLET PROTECTION
				SQ YD	EACH
NORTH AIRPORT DR	41+57	46+20	LT	103	
NORTH AIRPORT DR	46+72	49+44	LT	60	
NORTH AIRPORT DR		51+50	LT		1
NORTH AIRPORT DR		51+50	RT		1
NORTH AIRPORT DR	49+93	51+53	LT	36	
NORTH AIRPORT DR	42+24	51+51	RT	206	
NORTH AIRPORT DR	51+51	51+81	LT	10	
NORTH AIRPORT DR	51+53	51+81	RT	10	
PARKING ACCESS RD CULVERT		1+62	LT		1
PARKING ACCESS RD	0+10	4+18	LT	94	
PARKING ACCESS RD	0+08	4+18	RT	95	
PARKING ACCESS RD	4+18	4+37	RT	4	
PARKING ACCESS RD		6+73	LT		1
PARKING ACCESS RD		6+73	RT		1
PARKING ACCESS RD	4+89	8+16	RT	66	
PARKING ACCESS RD	5+10	8+37	LT	87	
PARKING ACCESS RD		9+33	LT		1
PARKING ACCESS RD		9+33	RT		1
PARKING ACCESS RD	9+20	9+99	LT	16	
PARKING ACCESS RD	9+99	10+64	LT	14	
STANDARD AERO PARKING LOT		0+64	LT		1
STANDARD AERO PARKING LOT		2+09	LT		1
STANDARD AERO PARKING LOT		2+62	LT		1
STANDARD AERO PARKING LOT		3+28	LT		1
STANDARD AERO PARKING LOT		3+53	RT		1
STANDARD AERO PARKING LOT AND ENTRANCE			LT	19	
STANDARD AERO PARKING LOT AND ENTRANCE			RT	81	
PUBLIC SAFETY FACILITY PARKING LOT AND ENTRANCE				126	2
TOTAL				1027	14

SEEDING SCHEDULE					
LOCATION	FROM STA	TO STA	LT/RT/CTR	AR901510	AR901550
				SEEDING	LIME AND FERTILIZER
				ACRE	ACRE
NORTH AIRPORT DR	41+57	46+20	LT	0.02	0.02
NORTH AIRPORT DR	46+72	49+44	LT	0.01	0.01
NORTH AIRPORT DR	49+93	51+53	LT	0.01	0.01
NORTH AIRPORT DR	42+24	51+51	RT	0.04	0.04
NORTH AIRPORT DR	51+51	51+81	LT	0.00	0.00
NORTH AIRPORT DR	51+53	51+81	RT	0.00	0.00
PARKING ACCESS RD	5+08	9+99	LT	0.02	0.02
PARKING ACCESS RD	9+99	10+64	LT	0.00	0.00
PARKING ACCESS RD	0+10	4+18	LT	0.02	0.02
PARKING ACCESS RD	0+08	4+18	RT	0.02	0.02
PARKING ACCESS RD	4+18	4+37	RT	0.00	0.00
PARKING ACCESS RD	4+89	8+16	RT	0.01	0.01
STANDARD AERO PARKING LOT AND ENTRANCE			RT	0.02	0.02
STANDARD AERO PARKING LOT AND ENTRANCE			LT	0.00	0.00
PUBLIC SAFETY FACILITY PARKING LOT AND ENTRANCE				0.02	0.02
TOTAL				8.00	0.25

CONCRETE CURB AND GUTTER SCHEDULE								
LOCATION	FROM STA	RT/LT/CTR	TO STA	RT/LT/CTR	AR754900	AR754904	AR754410	
					REMOVE CONCRETE CURB	REMOVE COMB CURB AND GUTTER	COMB CURB AND GUTTER - M6.24	COMB CURB AND GUTTER - M6.12
					FOOT	FOOT	FOOT	FOOT
NORTH AIRPORT DR	41+57	LT	46+20	LT		462	462	
NORTH AIRPORT DR	46+72	LT	49+44	LT		272	272	
NORTH AIRPORT DR	49+93	LT	51+53	LT		160	157	
NORTH AIRPORT DR	41+57	RT	51+51	RT		993	993	
NORTH AIRPORT DR	51+51	LT	51+81	LT		44	47	
NORTH AIRPORT DR	51+51	RT	51+81	RT		45	47	
PARKING ACCESS RD	4+18	CTR	10+64	CTR		623	646	
PARKING ACCESS RD	5+08	RT	8+42	RT		360	165	
PARKING ACCESS RD	9+28	LT	10+64	LT		135	20	
STANDARD AERO ENTRANCE AND PARKING LOT	0+28	RT	3+09	LT		519	514	
STANDARD AERO ENTRANCE AND PARKING LOT						212	217	
STANDARD AERO ENTRANCE AND PARKING LOT						121	121	
STANDARD AERO PARKING LOT MEDIAN						271		
PARKING LOT ENTRANCE MEDIAN					43			
PARKING LOT BACK ENTRANCE MEDIAN					32			
TOTAL					74	4217	3660	

PAVEMENT MARKING							
LOCATION	TYPE	FROM STA	TO STA	SPACING	WIDTH	AR620510	AR620520
						PAVEMENT MARKING - POLYURETHANE	PAVEMENT MARKING - WATERBORNE
						SQ FT	SQ FT
NORTH AIRPORT RD	CENTER	41+57	51+27	0.25	4 INCH	81	
NORTH AIRPORT RD	STOP LINE	51+53	51+53	1	24 INCH	28	
PARKING ACCESS RD	CENTER	0+26	10+41	0.25	8 INCH	85	
PARKING ACCESS RD	STOP LINE	4+23	4+23	1	24 INCH	26	
PARKING ACCESS RD	STOP LINE	0+26	0+26	1	24 INCH	28	
PARKING LOT	PARKING SPACE				4 INCH		4252
PARKING LOT	PARKING SPACE STRIPED DETAIL				4 INCH		346
PARKING LOT	PARKING SPACE STRIPED DETAIL				8 INCH		752
PUBLIC SAFETY FACILITY PARKING LOT	PARKING SPACE				4 INCH		19
STANDARD AERO PARKING LOT	PARKING SPACE				4 INCH		261
STANDARD AERO PARKING LOT	PARKING SPACE STRIPED DETAIL				8 INCH		140
STANDARD AERO PARKING LOT	INTERNATIONAL SYMBOL OF ACCESSIBILITY PARKING SPACE				4 INCH		9
TOTAL						247	5779

DRAINAGE UTILITIES					
LOCATION	STA	LT/RT/CTR	AR751940	AR751943	AR751927
			ADJUST INLET	ADJUST MANHOLE	REPLACE FRAME & GRATE
			EACH	EACH	EACH
STANDARD AERO PARKING LOT	0+21	LT		1	
STANDARD AERO PARKING LOT	0+65	LT		1	
STANDARD AERO PARKING LOT	2+09	LT		1	
STANDARD AERO PARKING LOT	2+36	LT		1	
STANDARD AERO PARKING LOT	2+62	LT			1
STANDARD AERO PARKING LOT	3+28	LT			1
STANDARD AERO PARKING LOT	3+53	RT	1		
PARKING LOT				2	
NORTH AIRPORT DR	51+50	LT	1		
NORTH AIRPORT DR	51+50	RT	1		
PARKING ACCESS RD	6+73	LT	1		
PARKING ACCESS RD	6+73	RT	1		
PARKING ACCESS RD	9+33	LT	1		
PARKING ACCESS RD	9+33	RT	1		
TOTAL			7	6	2



REMOVAL LEGEND

	PCC PAVEMENT REMOVAL
	BITUMINOUS PAVEMENT REMOVAL
	REMOVE COMB CURB & GUTTER

WSP
 3200 Pleasant Run
 Suite A
 Springfield, IL 62711
 Phone: (217) 546-7455

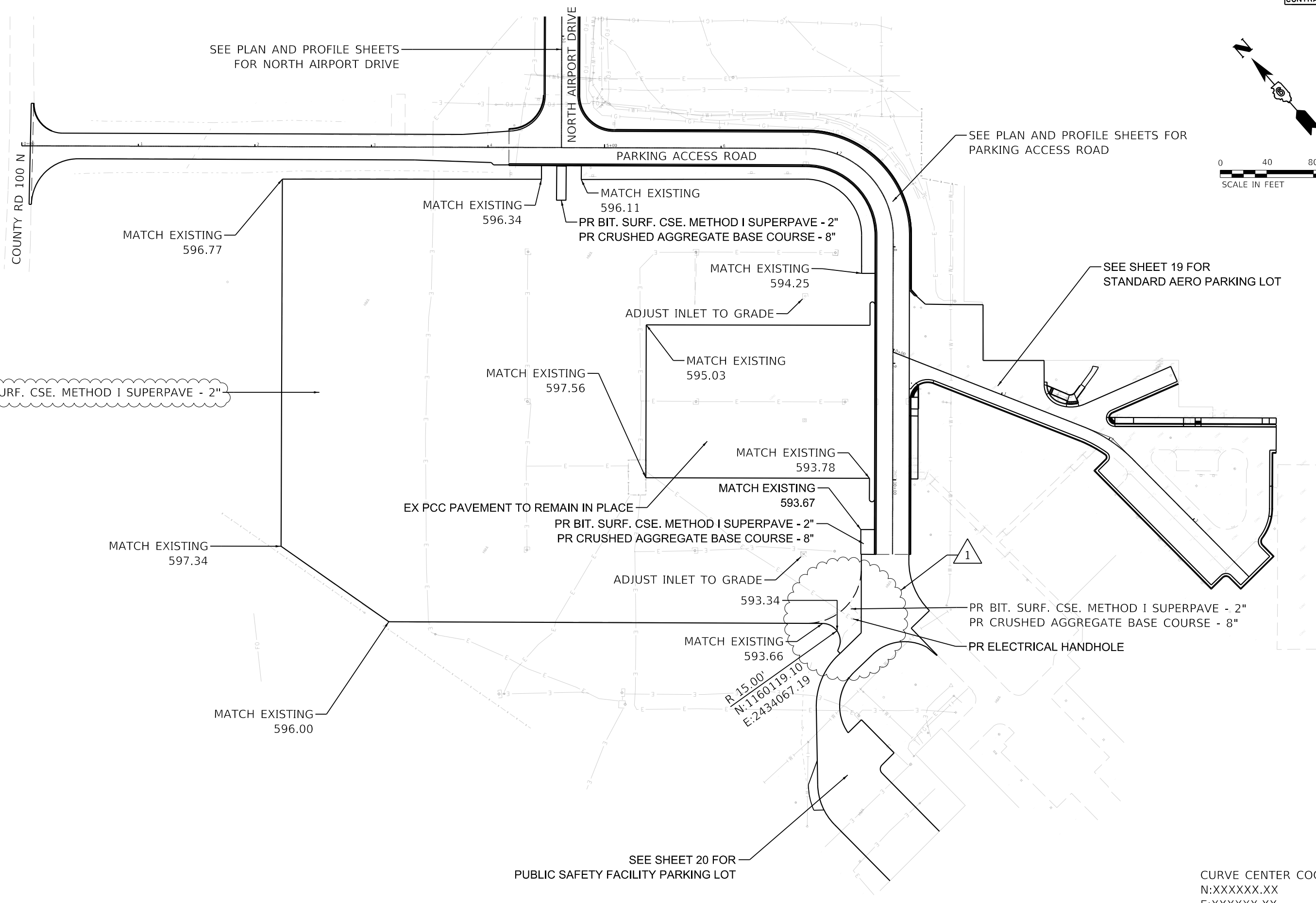
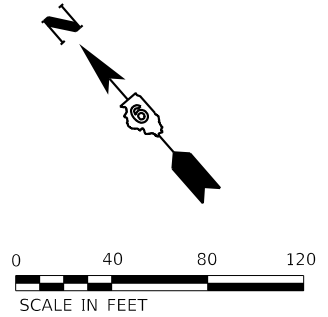
USER NAME = USAG709209	DESIGNED	REVISED	12/29/23
	DRAWN	REVISED	-
	CHECKED	REVISED	-
PLOT DATE = 12/28/2023	DATE	REVISED	-

STATE OF ILLINOIS
DEPARTMENT OF TRANSPORTATION

REMOVAL PLAN



TOTAL SHEETS	SHEET NO.
68	10
IL. PROJ. SPI-4977	



SEE PLAN AND PROFILE SHEETS FOR NORTH AIRPORT DRIVE

SEE PLAN AND PROFILE SHEETS FOR PARKING ACCESS ROAD

SEE SHEET 19 FOR STANDARD AERO PARKING LOT

SEE SHEET 20 FOR PUBLIC SAFETY FACILITY PARKING LOT

CURVE CENTER COORDINATES
 N:XXXXXX.XX
 E:XXXXXX.XX



3200 Pleasant Run
 Suite A
 Springfield, IL 62711
 Phone: (217) 546-7455

USER NAME = USAG709209	DESIGNED	REVISED	12/29/23
	DRAWN	REVISED	-
	CHECKED	REVISED	-
PLOT DATE = 12/28/2023	DATE	REVISED	-

STATE OF ILLINOIS
DEPARTMENT OF TRANSPORTATION

PLAN
AIRPORT PARKING LOTS



TOTAL SHEETS	SHEET NO.
68	18
IL. PROJ. SPI-4977	

GENERAL

1. THE CONTRACTOR AND ALL SUBCONTRACTORS SHALL FOLLOW THE REQUIREMENTS OF THE AIRPORT'S APPROVED CONSTRUCTION SAFETY AND PHASING PLAN (CSPP), FAA AC ~~(150/5370-2G)~~ AND ALL AIRPORT SAFETY AND SECURITY REQUIREMENTS.
2. PRIOR TO THE START OF CONSTRUCTION, THE CONTRACTOR SHALL SUBMIT TO THE AIRPORT FOR APPROVAL A SAFETY PLAN COMPLIANCE DOCUMENT (SPCD) IN ACCORDANCE WITH FAA AC ~~(150/5370-2G)~~ NO CONSTRUCTION ACTIVITY SHALL BEGIN UNTIL THE AIRPORT HAS APPROVED THE SPCD.
3. THE CSPP COVERS OPERATIONAL SAFETY, THE CONTRACTOR SHALL BE RESPONSIBLE FOR THE INDIVIDUAL SAFETY OF HIGHER PERSONNEL AND MEETING OSHA REQUIREMENTS.
4. A MINIMUM OF 10 DAYS PRIOR TO THE NOTICE TO PROCEED THE CONTRACTOR SHALL PROVIDE A LIST OF SUBCONTRACTORS AND MATERIAL SUPPLIERS.
5. PRIOR TO THE START OF CONSTRUCTION, THE CONTRACTOR SHALL SIGN THE SWPPP CERTIFICATION STATEMENT.
6. ALL CONTRACTOR COSTS ASSOCIATED WITH THE REQUIREMENTS LISTED ON THIS SHEET SHALL BE CONSIDERED INCIDENTAL TO THE CONTRACT UNLESS A SPECIFIC PAY ITEM IS PROVIDED.

1. COORDINATION

1. PRIOR TO THE START OF CONSTRUCTION, THE CONTRACTOR SHALL ATTEND A PRECONSTRUCTION CONFERENCE WITH THE AIRPORT, ENGINEER, AND ILLINOIS DIVISION OF AERONAUTICS (IDA). THE COST OF PREPARING FOR AND ATTENDING THE PRECONSTRUCTION CONFERENCE SHALL BE INCIDENTAL TO THE CONTRACT.
2. ON OR BEFORE THE PRECONSTRUCTION CONFERENCE, THE CONTRACTOR SHALL SUBMIT A PROPOSED SCHEDULE FOR THE PROJECT. THE SCHEDULE SHALL INCLUDE A START AND COMPLETION DATE FOR EACH ITEM OF WORK. THE SCHEDULE SHALL BE UPDATED ON A WEEKLY BASIS. ALL COSTS ASSOCIATED WITH THE SCHEDULE SHALL BE INCIDENTAL TO THE CONTRACT.
3. DURING CONSTRUCTION THE CONTRACTOR SHALL ATTEND A WEEKLY COORDINATION MEETING WITH THE AIRPORT STAFF AND RESIDENT ENGINEER. ALL COSTS ASSOCIATED WITH ATTENDING THE WEEKLY MEETING SHALL BE INCIDENTAL TO THE CONTRACT.

2. PHASING

1. PHASING SHALL BE AS DESCRIBED ON SHEET 24 AND AS SHOWN ON THE CONSTRUCTION PHASING PLAN SHEET.

3. AREAS AND OPERATIONS AFFECTED BY THE CONSTRUCTION ACTIVITY

1. THE CONTRACTOR SHALL MAINTAIN SAFE AND EASY ACCESS TO THE BUILDINGS AND ENTRANCES LOCATED OFF OF NORTH AIRPORT DRIVE AND THE ADJACENT PARKING LOTS AT ALL TIMES DURING CONSTRUCTION.
2. WHEN CONFLICTS ARISE BETWEEN CONSTRUCTION ACTIVITIES AND SPRINGFIELD AIRPORT AUTHORITY (SAA) OPERATIONS AND SAFETY, SAA OPERATIONS AND SAFETY SHALL TAKE PRECEDENCE AND SHALL GOVERN. FINAL AUTHORITY IN THE APPROVAL OF CONSTRUCTION SEQUENCING LIES WITH THE AIRPORT TERMINAL COMPLEX.

4. CONTRACTOR ACCESS

1. CONTRACTOR ACCESS AND OPERATIONS SHALL BE RESTRICTED TO THE STAGING AREAS OF CONSTRUCTION AS SHOWN ON THE STAGING PLANS.
2. CONTRACTOR SHALL OBTAIN ALL NECESSARY PERMITS AND SHALL COMPLY WITH ALL REQUIREMENTS, LOAD RESTRICTIONS, & TRAFFIC CONTROL SIGNAGE REQUIRED BY THE CITY, COUNTY, TOWNSHIP, OR I.D.O.T.
3. CONTRACTOR EMPLOYEES MAY BE REQUIRED TO OBTAIN AN AIRPORT IDENTIFICATION BADGE. THIS CONSISTS OF FILLING OUT ALL NECESSARY PAPERWORK, FINGERPRINTING, ATTENDING AND PASSING A TRAINING CLASS CONCERNING SAFETY AND SECURITY AT THE AIRPORT. CONTRACTOR EMPLOYEES MUST MEET BACKGROUND CHECK CRITERIA AND THE CONTRACTOR MUST MAKE CERTIFICATION ABOUT EACH EMPLOYEE. THE CONTRACTOR SHALL BE RESPONSIBLE FOR FINGERPRINTING COSTS.
4. ALL CONTRACTOR EMPLOYEES WHO ARE DESIGNATED AS DRIVERS FOR THE CONTRACTOR WITHIN THE AIRFIELD OPERATIONS AREA (AOA) SHALL ALSO ATTEND AND PASS THE AIRPORT DRIVERS TRAINING PROGRAM. ONLY THOSE INDIVIDUALS WHO RECEIVE THIS DESIGNATION WILL BE PERMITTED TO OPERATE VEHICLES OR EQUIPMENT ON THE AIRPORT. ALL COSTS ASSOCIATED WITH THE DRIVER TRAINING PROGRAM SHALL BE BORNE BY THE CONTRACTOR.
5. CONTRACTOR VEHICLES AND EQUIPMENT SHALL BE MARKED AND FLAGGED PER SECTION 70-16 OF THE STANDARD SPECIFICATIONS.
6. DRIVERS OF TRUCKS CONTAINING MATERIAL DELIVERIES (AGGREGATE, CONCRETE, ETC.) WILL NOT NEED TO OBTAIN AN AIRPORT ID BADGE BUT SHALL BE REQUIRED TO SUBMIT THEIR NAME, DRIVER'S LICENSE NUMBER, TRUCK LICENSE PLATE NUMBER AND NAME OF TRUCKING COMPANY TO THE PRIME CONTRACTOR PRIOR TO ENTERING THE JOB-SITE. WHILE INSIDE THE AOA, THE TRUCK DRIVERS SHALL BE SUPERVISED BY THE CONTRACTOR.
7. CONTRACTOR STORAGE AND STAGING AREA WILL BE AS SHOWN IN THE PLANS OR AS DIRECTED BY THE SAA.
8. THE CONTRACTOR SHALL KEEP A RECORD OF THE NAMES OF ALL EMPLOYEES ENTERING THE JOB SITE ON A DAILY BASIS. A RECORD OF EACH SUBCONTRACTOR ENTERING THE JOB SITE SHALL ALSO BE KEPT BY THE CONTRACTOR.
9. WHEN THE CONTRACTOR IS NOT WORKING, EQUIPMENT SHALL BE STORED AT THE STAGING AREA.
10. DURING ADVERSE WEATHER THE CONTRACTOR SHALL MAINTAIN ACCESS TO THE WORK AT NO ADDITIONAL COST TO THE CONTRACT. NO EXTENSION OF THE CONTRACT TIME WILL BE CONSIDERED FOR DELAYS DUE TO LACK OF ADEQUATE ACCESS TO THE WORK SITE.
11. THE CONTRACTOR SHALL THOROUGHLY CLEAN ALL CONSTRUCTION AREAS AND HAUL ROUTES WHICH WILL BE OPENED TO THE PUBLIC TO THE SATISFACTION OF THE SAA. A POWER BROOM AND OPERATOR SHALL BE ON SITE AT ALL TIMES WHEN ACTIVE PAVEMENTS ARE UTILIZED FOR CONSTRUCTION TRAFFIC.
12. ALL PAVEMENTS, DRIVES OR ANY OTHER AREAS UTILIZED BY THE CONTRACTOR FOR HAUL ROADS OR STORAGE AREAS SHALL BE MAINTAINED AND REPAIRED TO THE SAME CONDITION OR BETTER THAN THEY WERE PRIOR TO THE START OF CONSTRUCTION. NO ADDITIONAL COMPENSATION WILL BE MADE TO THE CONTRACTOR FOR THIS WORK.
13. ALL VEHICLE AND EQUIPMENT OPERATORS USED BY THE CONTRACTOR SHALL BE PROPERLY TRAINED BY THE CONTRACTOR.
14. THE CONTRACTOR SHALL NOTIFY THE AIRCRAFT RESCUE AND FIRE FIGHTING (ARFF) FACILITY IF CONSTRUCTION ACTIVITY MAY REQUIRE THE BLOCKAGE OF EMERGENCY ACCESS TO THE AIRPORT.

15. CONTRACTOR STOCKPILES SHALL NOT EXCEED 20' IN HEIGHT.

5. NOTIFICATION OF CONSTRUCTION ACTIVITIES

1. THE CONTRACTOR SHALL PROVIDE A 24 HOUR EMERGENCY CONTACT PERSON AND PHONE NUMBER.
2. THE CONTRACTOR SHALL GIVE A MINIMUM OF 72 HOURS NOTICE TO AIRPORT OPERATIONS PRIOR TO CLOSING ANY PAVEMENTS SO THAT PROPER NOTIFICATION MAY BE ISSUED BY THE AIRPORT.
3. FOR ANY EQUIPMENT USED BY THE CONTRACTOR WITH A HEIGHT GREATER THAN ~~(35')~~ THE CONTRACTOR SHALL PROVIDE TO THE AIRPORT THE TYPE OF EQUIPMENT, TOTAL HEIGHT, AND LOCATION WHERE THE EQUIPMENT WILL BE USED. THE AIRPORT WILL SUBMIT FAA FORM 7460-1 TO THE FAA FOR AN AIRSPACE STUDY. NO EQUIPMENT WITH A HEIGHT GREATER THAN ~~(35')~~ SHALL BE USED UNTIL A DETERMINATION FROM FAA IS RECEIVED.
4. IN THE EVENT OF AN EMERGENCY, THE CONTRACTOR SHALL CALL 911.
5. THE CONTRACTOR SHALL NOTIFY THE ENGINEER 7 DAYS BEFORE STARTING WORK IN EACH PHASE.

6. INSPECTION REQUIREMENTS

1. THE CONTRACTOR SHALL INSPECT THE JOBSITE DAILY TO ENSURE COMPLIANCE WITH THE CSPP (CONSTRUCTION SAFETY AND PHASING PLAN). THE CHECKLIST FOUND IN APPENDIX 3 OF FAA AC ~~(150/5370-2G)~~ MAY BE USED TO AID IN THE INSPECTIONS.
2. THE CONTRACTOR SHALL REQUEST AND ATTEND AN INSPECTION OF EACH PHASE WORK AREA PRIOR TO THE AREA BEING REOPENED. THE AIRPORT WILL DETERMINE IF THE WORK AREA IS ALLOWED TO BE OPENED.

7. UNDERGROUND UTILITIES

1. IT WILL BE NECESSARY FOR THE CONTRACTOR TO MAKE HIS OWN FIELD INVESTIGATION TO DETERMINE THE EXACT LOCATION OF THE UNDERGROUND UTILITIES AT CRITICAL POINTS. THE LOCATION OF UNDERGROUND UTILITIES AS INDICATED ON THE PLANS HAS BEEN OBTAINED FROM EXISTING RECORDS. NEITHER THE OWNER NOR THE ENGINEER ASSUMES ANY RESPONSIBILITY IN RESPECT TO THE ACCURACY, COMPLETENESS OR SUFFICIENCY OF THE INFORMATION. ANY UTILITY, INCLUDING AIRFIELD ELECTRICAL CABLE AND LIGHTS, DAMAGED BY THE CONTRACTOR SHALL BE REPAIRED BY HIM AT HIS OWN EXPENSE IN A MANNER WHICH IS SATISFACTORY TO THE ENGINEER AND TO THE OWNER OF THE UTILITY. ANY REPAIRS THAT MUST BE MADE BY THE OWNER OF THE UTILITY SHALL HAVE THE COST REIMBURSED TO THE UTILITY BY THE CONTRACTOR. AIRFIELD LIGHTING CABLES DAMAGED BY THE CONTRACTOR SHALL BE REPAIRED BY A QUALIFIED ELECTRICIAN WITH THE COSTS TO BE BORNE BY THE CONTRACTOR.
2. BEFORE INITIATING ANY DIGGING, DRILLING OR EXCAVATING ON THE AIRPORT PROPERTY, THE CONTRACTOR SHALL CALL J.U.L.I.E., THE AIRPORT, AND CONTACT THE LOCAL FAA OFFICE TO ARRANGE FOR UTILITY LOCATES.

8. PENALTIES

1. NONCOMPLIANCE BY THE CONTRACTOR WITH AIRPORT RULES AND REGULATIONS OR FAILURE TO COMPLY WITH THE AIRPORT'S APPROVED CSPP, THE CONTRACTOR'S APPROVED SPCD, OR THE SECURITY PLAN MAY RESULT IN FINES AS ALLOWED BY LAW.

9. HAZARD MARKING AND LIGHTING

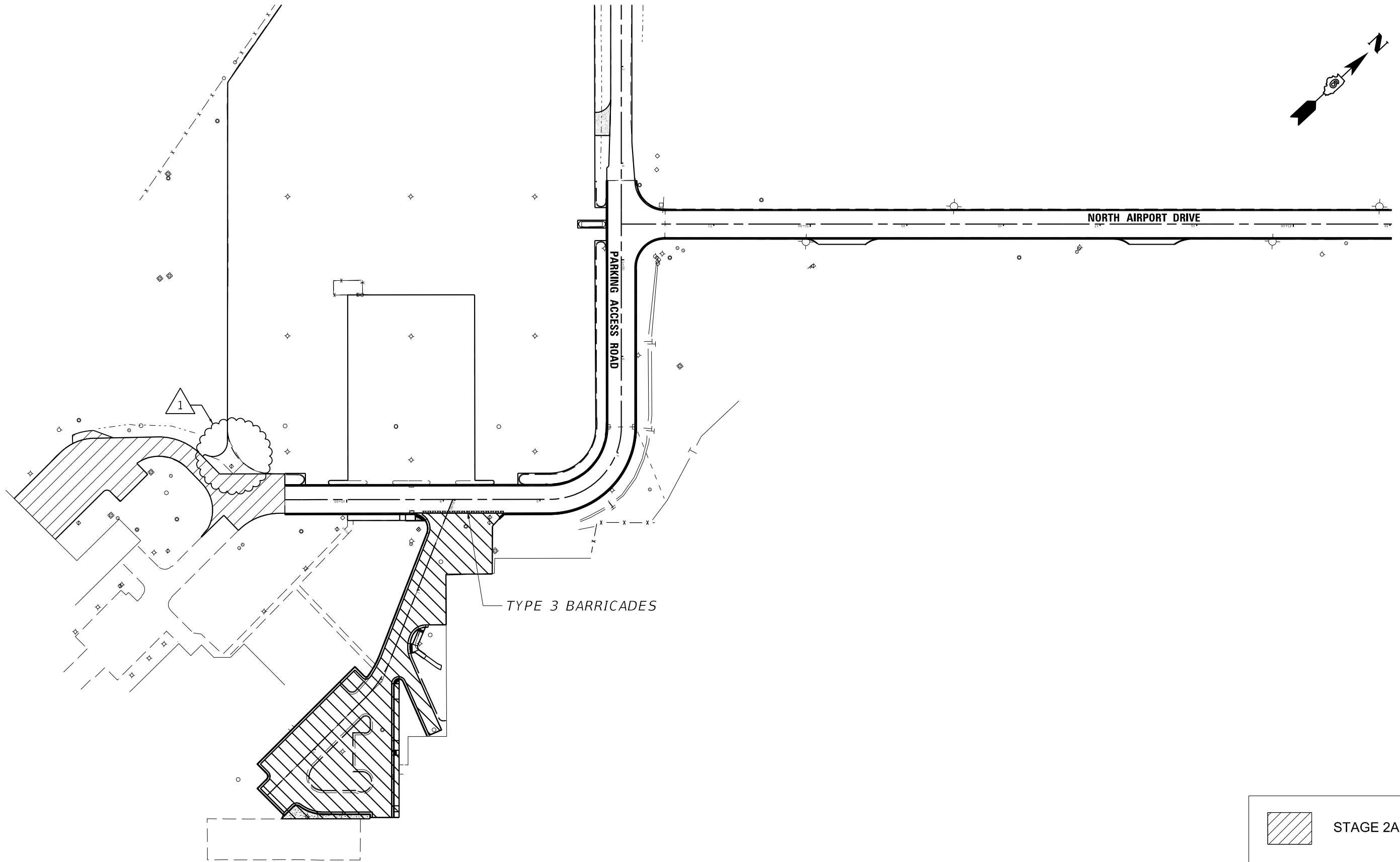
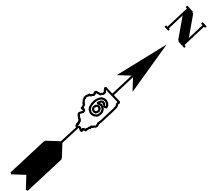
1. THE CONTRACTOR SHALL FURNISH, ERECT, AND MAINTAIN MARKINGS AND ASSOCIATED LIGHTING OF OPEN TRENCHES, EXCAVATIONS, TEMPORARY STOCKPILES, AND THE CONTRACTOR'S CONSTRUCTION EQUIPMENT.
2. ALL CONSTRUCTION EQUIPMENT SHALL BE FLAGGED AND/OR LIGHTED IN ACCORDANCE WITH FAA ADVISORY CIRCULAR ~~(150/5370-2G)~~ AND ~~(150/5210-5D)~~ AT ALL TIMES WHILE OPERATING ON AIRPORT PROPERTY. THE MAXIMUM EQUIPMENT HEIGHT IS ~~(35')~~.
3. BARRICADES SHALL BE PLACED AT THE LOCATIONS SHOWN ON THE CONSTRUCTION ACTIVITY PLAN SHEET OR AS DIRECTED BY THE AIRPORT.
4. THE CONTRACTOR SHALL INSPECT THE BARRICADES ONCE DURING EACH WORK DAY TO ENSURE PROPER PLACEMENT AND PROPER OPERATION OF THE RED LIGHTS AND FLAG PLACEMENT.

10. OTHER LIMITATIONS ON CONSTRUCTION

1. IF, DURING CONSTRUCTION, AN EMERGENCY IS DECLARED BY THE AIRPORT, THE CONTRACTOR SHALL IMMEDIATELY CLEAR THE PAVEMENT OF ALL VEHICLES, PERSONNEL AND EQUIPMENT.
2. BROKEN CONCRETE, BROKEN ASPHALT, RUBBISH FROM DEMO, AND OTHER MISCELLANEOUS DEBRIS SHALL BE DISPOSED OF OFF AIRPORT PROPERTY, UNLESS OTHERWISE SPECIFIED.

11. HAZARDOUS MATERIAL (HAZMAT) MANAGEMENT

1. THE CONTRACTOR SHALL DEVELOP A HAZMAT MANAGEMENT PLAN AND KEEP COPIES ON THE JOBSITE OF MATERIAL SAFETY DATA SHEETS (MSDS) FOR ALL MATERIALS HANDLED ON THE JOBSITE.



NOTES: CONTRACTOR STORAGE AND STAGING AREA SHALL BE AS SHOWN FOR STAGES 1 AND 3

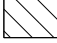
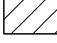


	STAGE 2A
	STAGE 2B

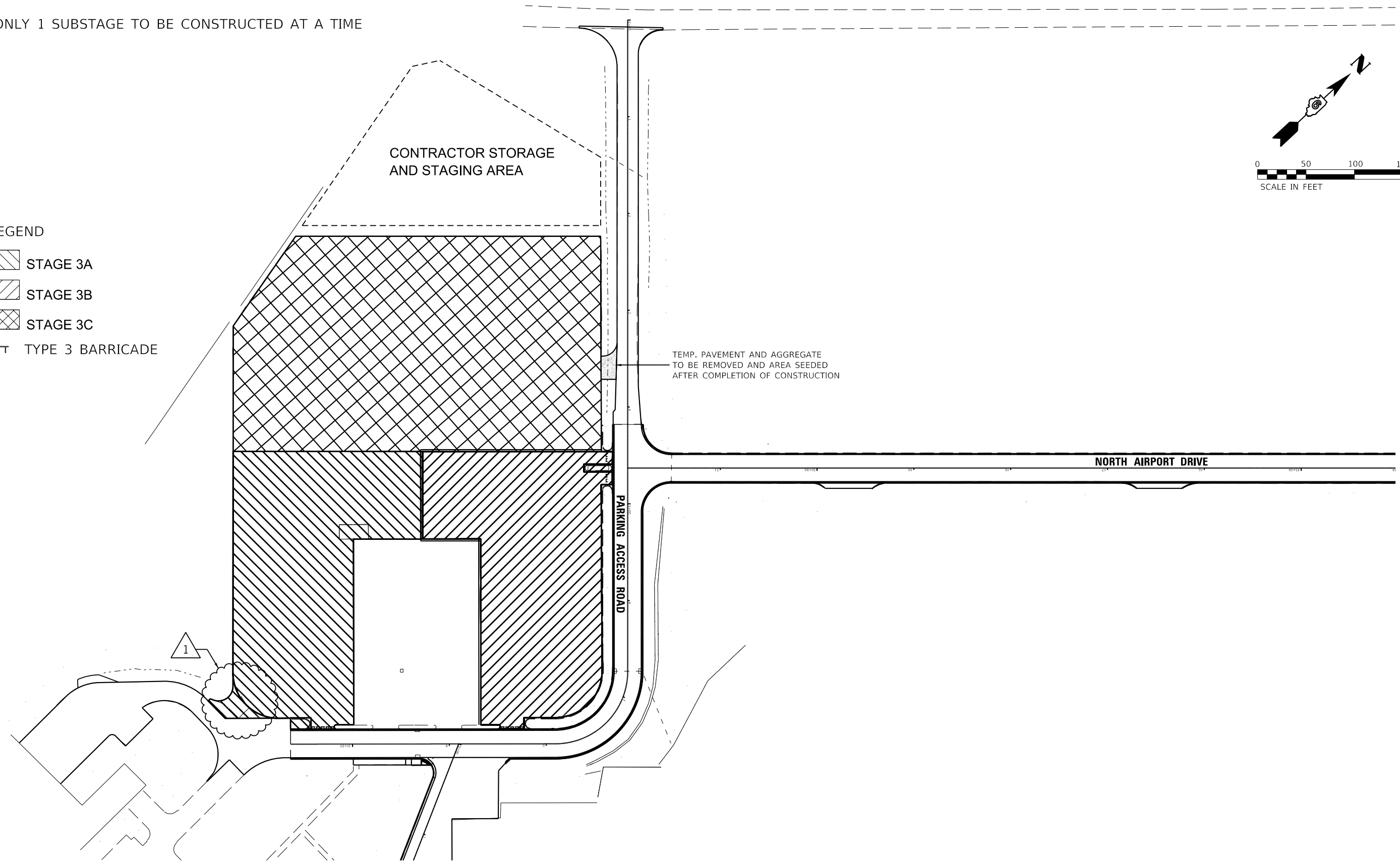
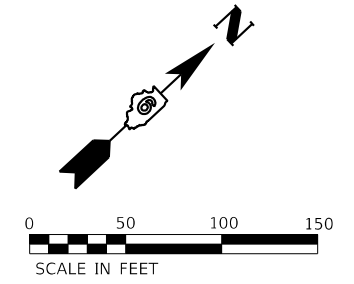
USER NAME = USAG709209	DESIGNED	REVISED Δ 12/29/23
	DRAWN	REVISED -
	CHECKED	REVISED -
PLOT DATE = 12/28/2023	DATE	REVISED -

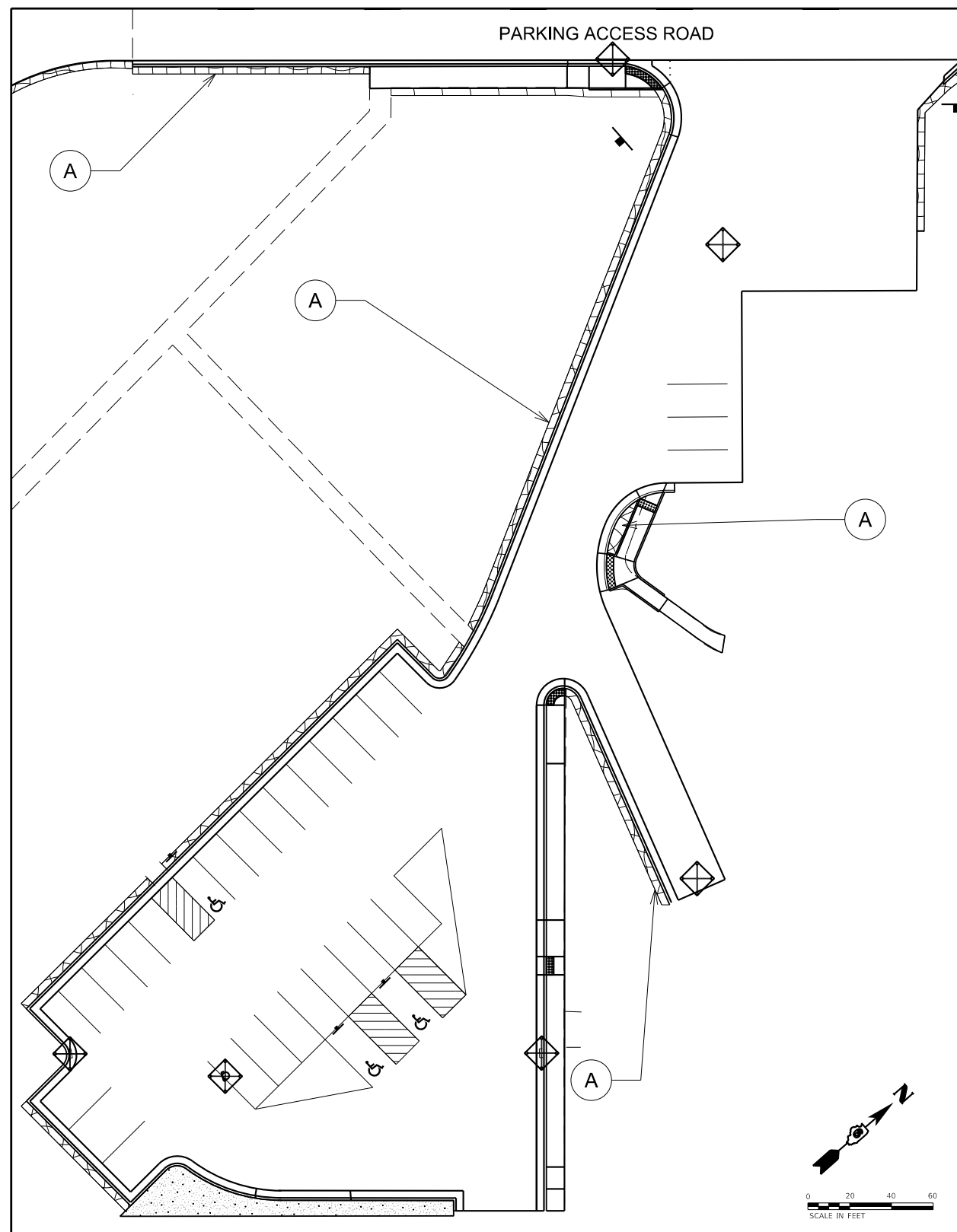
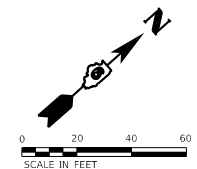
TOTAL SHEETS	SHEET NO.
68	28
IL. PROJ. SPI-4977	

NOTE:
 DRUMS TO BE PLACED AROUND WORK ZONE
 ONLY 1 SUBSTAGE TO BE CONSTRUCTED AT A TIME

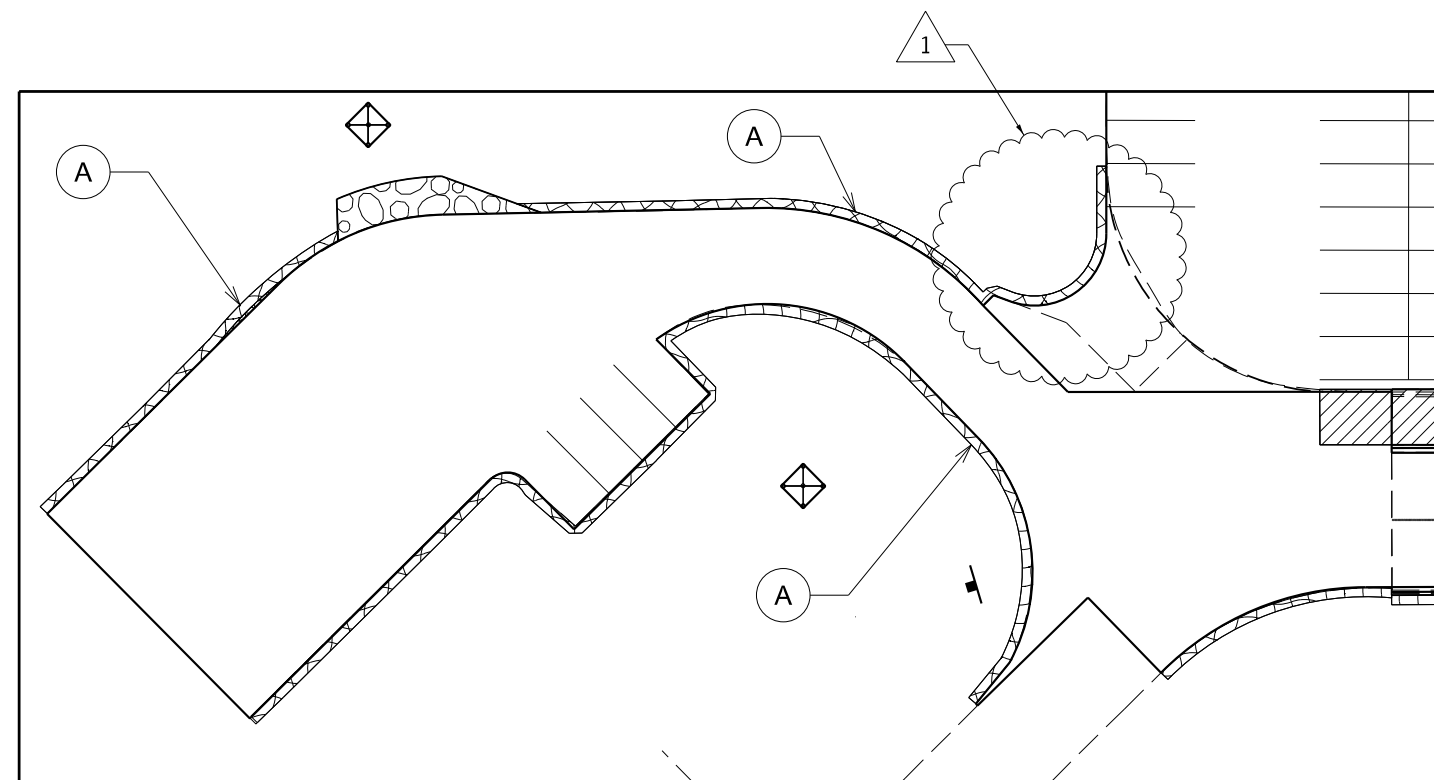
LEGEND

-  STAGE 3A
-  STAGE 3B
-  STAGE 3C
-  TYPE 3 BARRICADE





STANDARD AERO PARKING LOT



PUBLIC SAFETY FACILITY PARKING LOT

LEGEND:

- EROSION INLET AND PIPE PROTECTION
- EROSION CONTROL BLANKET
- PROPOSED RR3 RIPRAP
- AREAS TO BE SEEDED

USER NAME = USAG709209	DESIGNED	REVISED	△ 12/29/23
	DRAWN	REVISED	-
	CHECKED	REVISED	-
PLOT DATE = 12/28/2023	DATE	REVISED	-

GENERAL NOTES

1. ALL WORK SHALL CONFORM TO THE LATEST IDOT STANDARD SPECIFICATIONS FOR ROAD AND BRIDGE CONSTRUCTION 2024, SPECIAL PROVISIONS, SUPPLEMENTAL SPECIFICATIONS, THE NATIONAL ELECTRICAL CODE, AND THE NATIONAL ELECTRICAL SAFETY CODE.
2. THE CONTRACTOR SHALL VERIFY ALL DIMENSIONS AND CONDITIONS IN THE FIELD PRIOR TO CONSTRUCTION AND ORDERING OF MATERIALS.
3. COORDINATE RESPONSIBILITIES FOR USE AND REMOVAL OF ANY TEMPORARY POWER, EQUIPMENT, OR OTHER SERVICES PROVIDED FOR THIS SPACE DURING AND AFTER CONSTRUCTION
4. SPLICING OF CONDUCTORS SHALL BE IN POLE BASES. SPLICES BELOW GRADE ARE NOT PERMITTED.
5. ALL ELECTRICAL EQUIPMENT SHALL BE UL LISTED AND LABELED.
6. ALL CONDUITS SHALL BE SEALED.
7. ALL CIRCUIT WIRES SHALL BE LABELED WITH CIRCUIT IDENTIFICATION.
8. CIRCUITS SHALL BE TESTED PER SECTION 801.13 OF THE IDOT STANDARD SPECIFICATIONS FOR ROAD AND BRIDGE CONSTRUCTION.
9. THE LOCATIONS OF ALL PROPOSED EQUIPMENT ARE ILLUSTRATED DIAGRAMATICALLY. THE ACTUAL LOCATION IN THE FIELD SHALL MEET THE APPROVAL OF THE ENGINEER.
10. GROUNDING CONDUCTORS SHALL BE CONTINUOUS.
11. ALL NEW WIRING AND CONDUITS SHALL BE PLACED A MINIMUM OF 24" BENEATH THE FINISHED GRADE.
12. CONDUIT TRENCHING SHALL OCCUR WHEN THE SURFACE HMA HAS BEEN REMOVED. BACKFILL TO THE LEVEL OF THE ADJACENT SUB BASE. ALL BACKFILL SHALL CONFORM TO SECTION 810 OF THE STANDARD SPECIFICATIONS FOR ROAD AND BRIDGE CONSTRUCTION.
13. LIGHT POLE FOUNDATIONS SHALL BE INSTALLED WITH A DEPTH AS NOTED ON THE DETAIL PLANS. ANY MODIFICATIONS SHALL BE IN ACCORDANCE WITH SECTION 516 OF THE IDOT STANDARD SPECIFICATIONS FOR ROAD AND BRIDGE CONSTRUCTION.
14. REMOVAL OF AN EXISTING LIGHTING UNIT FOR RELOCATION SHALL ALWAYS BE FOLLOWED BY THE REMOVAL OF THE POLE FOUNDATION.
15. LIGHT FIXTURES TYPE II SHALL BE ONE OF THE FOLLOWING, OR APPROVED EQUAL:
MCGRAW-EDISON VTS-E08-LED-E1-T2-7050
LITHONIA LIGHTING CSX1 LED 60C 1000 50K T2M
SPAULDING LIGHTING CLI-90L-5K-2
16. LIGHT FIXTURES TYPE V SHALL BE ONE OF THE FOLLOWING, OR APPROVED EQUAL:
MCGRAW-EDISON VTS-E08-LED-E1-5WQ-7050
LITHONIA LIGHTING CSX1 LED P12 50K T5W MVOLT
SPAULDING LIGHTING CLI-90L-5K-5W

DEMOLITION NOTES

- D1. ALL ITEMS THAT ARE NOT USED SHALL BECOME PROPERTY OF THE CONTRACTOR AND BE REMOVED FROM THE SITE TO BE PROPERLY DISPOSED.
- D2. THE CONTRACTOR SHALL BE RESPONSIBLE FOR ANY DAMAGE CAUSED TO THE EXISTING CONDITIONS OR OTHER CONTRACTOR'S WORK INCLUDING DAMAGE OUTSIDE THE LIMITS OF CONSTRUCTION.
- D3. ALL REMOVALS SHALL COMPLY WITH SECTION 842 OF THE IDOT STANDARD SPECIFICATIONS FOR ROAD AND BRIDGE CONSTRUCTION. WHERE EXISTING WORK MUST BE REMOVED AS A RESULT OF ALTERATIONS, IT SHALL BE COMPLETELY REMOVED BACK TO THE LAST POINT UNAFFECTED BY THE REVISION OR, IF POSSIBLE, OUTSIDE THE AREA OF CONSTRUCTION. ALL CONDUIT, WIRE, AND OTHER APPURTENANCES SHALL BE INCLUDED UNDER THIS REQUIREMENT.
- D4. CONDUIT OR RACEWAY WHICH IS BURIED IN CONCRETE OR OTHERWISE INACCESSIBLY POSITIONED MAY BE ABANDONED. IN SUCH CASES ALL WIRE SHALL BE REMOVED FROM THE CONDUIT OR RACEWAY AND SHALL ITSELF BE PLUGGED AND TAGGED APPROPRIATELY AT EACH END.

LIGHTING PLAN NOTES

1. PROVIDE AND INSTALL TYPE II LUMINAIRE, 30' LIGHT POLE, AND TYPE 7A FOUNDATION. EXTEND THE SAME SIZE CONDUIT AND WIRE TO NEW LOCATION FROM THE EXISTING LOCATION. TYPE TO MATCH EXISTING IN THE SAME AREA. CONTRACTOR TO VERIFY CAPACITY OF EXISTING CIRCUIT PRIOR TO INSTALLATION.
2. PROVIDE AND INSTALL 4-TYPE V LUMINAIRES, 30' LIGHT POLE, AND TYPE F7A FOUNDATION. EXTEND THE SAME SIZE CONDUIT AND WIRE TO NEW LOCATION FROM THE NEARBY RELOCATED LUMINAIRE, TYPE TO MATCH EXISTING IN THE SAME AREA. CONTRACTOR TO VERIFY CAPACITY OF EXISTING CIRCUIT TO BE EXTENDED PRIOR TO INSTALLATION.
3. RELOCATE EXISTING LIGHT POLE AND 4-TYPE V LUMINAIRES TO NEW TYPE F7A FOUNDATION. REMOVE THE EXISTING FOUNDATION. EXTEND THE SAME SIZE CONDUIT AND WIRE FROM THE EXISTING LOCATION TO THE NEW LOCATION. CONTRACTOR SHALL VERIFY THE CAPACITY OF THE EXISTING CIRCUIT PRIOR TO INSTALLATION. CONTRACTOR SHALL VERIFY THE EXISTING BOLT PATTERN PRIOR TO CONSTRUCTION OF THE NEW FOUNDATION.
4. A) EXISTING TRANSFORMER TO BE RELOCATED BY THE UTILITY.
B) CONTRACTOR TO PROVIDE CONDUIT, TRENCHING, AND BACKFILL BETWEEN NEW LOCATION AND UTILITY SWITCH. TRANSFORMER PRIMARY FEEDERS AND TERMINATIONS BY UTILITY.
5. A) EXISTING LIGHTING CONTROLLER TO BE RELOCATED BY CONTRACTOR.
B) SECONDARY CONDUIT AND FEEDERS, TRENCHING, AND BACKFILL TO BE PROVIDED BY CONTRACTOR. TRANSFORMER SECONDARY TERMINATIONS BY UTILITY. TRANSFORMER SECONDARY TERMINATIONS BY UTILITY. TRANSFORMER SECONDARY TERMINATIONS TO LIGHTING CONTROLLER BY CONTRACTOR.
6. THE CONTRACTOR SHALL CONFIRM ALL EXISTING WIRE GAUGES AND CONDUIT SIZING PRIOR TO CONSTRUCTION. CONTRACTOR TO INTERCEPT EXISTING CONDUIT. REPULL WIRING TO MATCH EXISTING TYPE AND GAUGE, OR AS APPROVED BY THE ENGINEER.
7. CONTRACTOR TO BUILD A 6' X 6' CONCRETE PAD 12" THICK FOR THE TRANSFORMER USING 12" PCC PAVEMENT PAY ITEM.



BILL OF MATERIALS

PAY ITEM NO.	PAY ITEM DESCRIPTION	UNIT OF MEASURE	QUANTITY
AR108082	1/C #2 XLP-USE	L.F.	120
AR108086	1/C #6 XLP-USE	L.F.	7280
AR108542	1/C #8 GROUND	L.F.	2430
AR108090	1/C #10 XLP-USE	L.F.	140
AR110117	1 1/2" PVC DUCT, DIRECT BURY	L.F.	140
AR110201	1" PVC DUCT, DIRECT BURY	L.F.	740
AR106401	LIGHT POLE	EACH	2
AR106965	RELOCATE LIGHT POLE & FIXTURE	EACH	1
AR801656	LIGHT POLE FOUNDATION (TYPE F7A)	EACH	3
AR801657	LIGHTING CONTROLLER FOUNDATION	EACH	1
AR801658	REMOVE CONCRETE FOUNDATION	EACH	2
AR801662	PARKING LED LUMINAIRE, TYPE V DISTRIBUTION	EACH	4
AR801663	PARKING LED LUMINAIRE, TYPE II DISTRIBUTION	EACH	1
AR801666	RELOCATE LIGHTING CONTROLLER	EACH	1
AR110610	ELECTRICAL HANDHOLE	EACH	1
AR110906	REMOVE ELECTRICAL HANDHOLE	EACH	1



USER NAME = USAG709209	DESIGNED	REVISED 12/29/2023
	DRAWN	REVISED -
	CHECKED	REVISED -
PLOT DATE = 12/29/2023	DATE	REVISED -

**STATE OF ILLINOIS
DEPARTMENT OF TRANSPORTATION**

**LIGHTING AND ELECTRICAL
GENERAL NOTES**



TOTAL SHEETS	SHEET NO.
68	54
IL. PROJ. SPI-4977	